

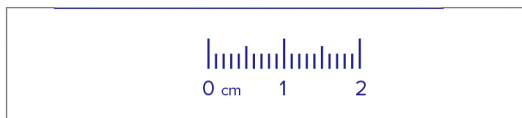
G L L A R

SIZING GUIDE

RINGS

► PRINTING SETTINGS

To get the best results, you will need to go to the 'printing settings' before printing and ensure that the 'page scaling' option is set to 'none' in the print dialogue box. The GLLAR Ring Size Chart must be printed on a full letter (8 1/2 x 11 inches) size page. To check that the Ring Size Chart has been printed properly, take a ruler and measure the sample below. It should measure exactly 2 cm.



► HOW TO USE THE G L L A R RING SIZE CHART

- If you have a ring that perfectly fits the finger on which the GLLAR creation will be worn, you can place it over the nearest sized circle of the Ring Size Chart.
- If your ring appears to be between two sizes, GLLAR recommends that the larger size be chosen.

The inner edge of the ring
IS NOT ALIGNED with the outer
edge of the circle;



The inner edge of the ring
IS NOT ALIGNED with the outer
edge of the circle;



The inner edge of the ring
IS ALIGNED with the outer
edge of the circle;

