



1500 Vinyl Collection

Single Hung Windows

CUSTOM



Building choice into every view.

1500 Single Hung Windows



Key features

- Expanded color palette
- Traditional or contemporary frame design options
- Many operable and fixed geometric shapes
- SDL or GBG grilles
- Easy installation
- Limited Lifetime Warranty
- High performance in an affordable window

Our 1500 Vinyl Collection offers features you'd expect to find in premium windows - without the premium price tag. Our single hung window boasts an energy-efficient fusion-welded frame available in three distinct profiles and colors to complement the style of your home.

Color options

*New exterior colors are on brickmould and flat casing only.



Frame Options



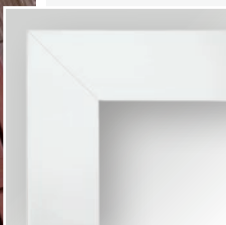
Brickmould

This classic profile complements traditional architectural styles.



Beveled

Clean chiseled lines and a narrower profile make this an attractive choice for modern homes.



Flat

The wide casing makes a design statement, while the arched trim really makes your windows stand out.

Grille types

*Also available with no grilles.

GBG Grilles



3/4" Flat, 5/8" or 1" Sculptured

SDL Grilles



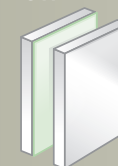
7/8" or 1-1/4" SDL with Shadow Bar

Glass options

Compare U-Factor ratings

Visit 1500vinylcollection.com for more detailed information

Low-E



7/8" Low-E	.35	SHGC .29
One lite of Low-E		
7/8" Low-E ^{SC}	.35	SHGC .22
One lite of solar cooling Low-E		
7/8" Low-E2+	.30	SHGC .28
One lite of Low-E and one lite of Interior Surface Low-E		

Low-E with Argon



7/8" HP	.32	SHGC .28
One lite of Low-E with argon		
7/8" HP ^{SC}	.32	SHGC .22
One lite of solar cooling Low-E with argon		
7/8" HP2+	.28	SHGC .28
One lite of Low-E and one lite of Interior Surface Low-E with argon		

Triple-Glazed



7/8" HP2 ^{Max}	.25	SHGC .25
Two lites of Low-E with two chambers of argon		
7/8" HP3 ^{Max}	.23	SHGC .22
Two lites of Low-E, two chambers of argon, one lite of Interior Surface Low-E		
1" HP3 ^{Max}	.22	SHGC .22
Two lites of Low-E, two chambers of argon, one lite of Interior Surface Low-E		

Values reflect 3050 call size brickmould non-drywall glazed single window with 3mm glass, WarmEdge Spacer, no grilles.

High performance.
Low maintenance.



Scan with your smartphone for product performance data.
1500VinylCollection.com

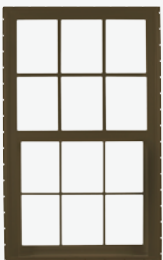
Window Highlights



Optional H-LC 50 Upgrade in Limited Sizes



Interior



Exterior



Jamb Alignment Clips

Aligns and holds frame in place during installation; enables one person to center smaller windows.



Interlocking Sashes

Sashes lock tightly together to help keep out intruders and inclement weather.



Integral Mulls

Twins and triples with continuous head and sill frame allows a mix of operating and fixed windows.

Patent #: 9038333



Dual Lift Rails

Full length lift rails make opening and closing easy.



Forced Entry Resistant Locks

Enhanced security locks meet tough AAMA forced entry requirements. ADA and auto-lock options available.



ADA Lock



Auto Lock



Scan with your smartphone for performance data, window sizes, CAD drawings and more.
1500VinyCollection.com



Building choice into every view

trademark of the U.S. Environmental Protection Agency. ©2017 Ply Gem Industries, Inc. ENERGY STAR® is a registered trademark of the U.S. Environmental Protection Agency. s'logon, Ply Gem Windows and the Ply Gem logo are trademarks of Ply Gem Industries, Inc. Building Success.™ is a registered trademark of Ply Gem Industries, Inc. WDMA is a registered trademark of the Window Distributors Manufacturers Association. NFRC is a registered trademark of the National Fenestration Rating Council. U.S. Green Building Council is a registered trademark of the U.S. Green Building Council.

Window Specs

FRAME

- 3 1/2" dual wall brickmould frame depth
- 2 7/8" beveled frame depth
- 1 3/8" integral nail fin set back
- Optional 1/2" flush flange for block installs
- Optional 3 1/2" flat casing
- Optional double utility trim simplifies siding installation
- Custom and traditional sizing to meet your needs
- Integral J-pocket simplifies siding installations
- Interior/exterior accessory grooves
- Sloped sill for water management
- Screen clip Patent #: 61738783
- Mixed operating and fixed integral mulls Patent #: 9038333

SASH

- Interior glazed top glass
- Exterior glazed bottom glass
- Interlocking sash with dual pile weatherstripping
- Inverted block & tackle or constant force coil balances
- Recessed tilt-latch
- Dual lift rails for easy operation
- Easy to remove meeting rail PP#: 61746220
- Half screens (shipped separately)

GLASS

- Double: Low-E, Low-E^{SC}, Low-E2+, Low-E2+^{SC}, HP, HP^{SC}, HP2+, HP2+^{SC}
- Triple: HP2^{MAX}, HP2^{MAX}^{SC}, HP3^{MAX}, HP3^{MAX}^{SC}
- Optional Warm Edge+ spacers
- Configurable STC values up to 35
- Impact, tempered, obscure and rain options
- EZ Clean option

GRILLES

- GBG (Grilles Between Glass) 3/4" Flat, 5/8" or 1" Sculptured
- SDL (Simulated Divided Lite) 7/8" or 1 1/4" with Shadow Bar
- Colonial, Plaza, Prairie, Diamond, Gothic patterns available

LOCKS

- Standard forced entry resistant cam lock
- Self-latching forced entry resistant auto-lock option
- ADA forced entry resistant auto-lock option

PERFORMANCE CERTIFICATIONS

- FLORIDA APPROVED FL16103
For a list of Ply Gem's Florida approved products visit floridabuilding.org.
- CANADIAN STANDARDS ASSOCIATION CERTIFIED
- TEXAS DEPARTMENT OF INSURANCE
WIN1769 non-impact, WIN1771 impact

1



Brickmould Beveled Flat

Select a frame profile

We offer different profiles to complement different architectural styles.

2

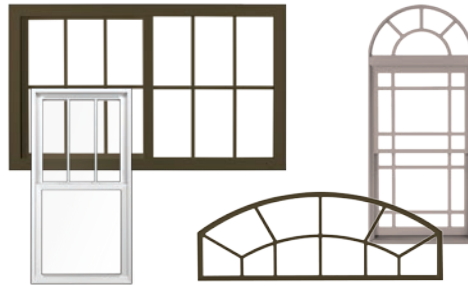


Select colors

We provide several color options to suit your home's unique style.

(Exterior two-tone colors are on brickmould and flat casing only and are not available on beveled.)

3



Add character with grilles and shapes.

Choose from a variety of distinctive looks.

4



Multiply the effect.

Combine fixed and operating windows to make a dramatic statement.

5

Enjoy the view.



For more information, call 888-9PLYGEM.



SIDING + ACCESSORIES | WINDOWS + DOORS | STONE VENEER | TRIM + MOULDINGS | FENCE + RAILING | ROOFING

371125191102/Rev/MS/CS/0117