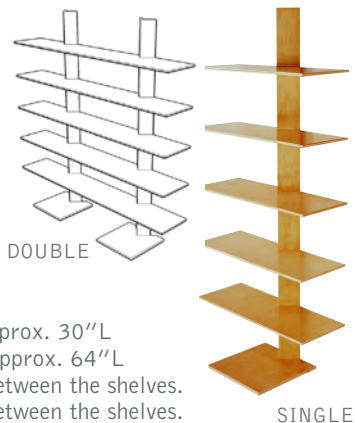


› NESTING SHELVES

A **SB** original, patented design.

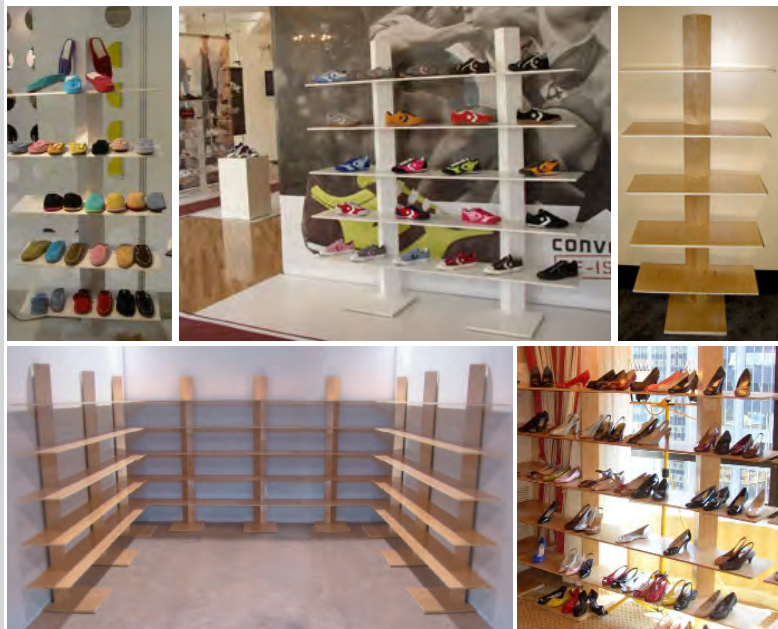
Description Our most popular rental item! This fixture maximizes your horizontal display area by wrapping a space with continuous shelving. The unit's unique design has a minimal styling which never distracts from your product.

- 2 Sizes Single Upright ea. shelf is approx. 30"L
Double Upright ea. shelf is approx. 64"L
- 2 Styles 5 shelf units have 11 3/4" between the shelves.
4 shelf units have 15 1/2" between the shelves.
- 2 Colors Maple Ply
White laminated Ply



INTERESTED IN SEEING HOW SB FIXTURING FIT IN THE PARK LANE GUEST ROOMS?

* Email RENTALS@SPRINGBOARDDESIGN FOR PLANS + VIEWS DESCRIBING YOUR OPTIONS.



› BED TOPPERS

A **SB** original design.

Description Maximize your hotel room's display space by using this light, flat, semi-rigid temporary surface on the bed.

Specs Clean WHITE PVC panel that sits on your bed's mattress.

Versatile Easily lifts + folds away at the end of a show day to free up your bed for R+R. Can be used as-is or draped with your own fabric or hotel table linen.

Display Uses A must for displaying heeled shoes on a bed keeping your product from falling over on a mattress.

Ordering Add SB Risers and increase your display's presence.



› RISERS

A **SB** original design.

Description 2 NEW fixtures That allow you to create tiered displays. White.

Versatile The units can be stacked in various configurations to achieve the look that works for your merchandise.

Display Uses Highlight product on a table or on a counter.

- 2 Sizes SMALL 11 1/2" D x 9"H x 24"L
LARGE 24" D x 12"H x 32"L

Need more info? Please email rentals@springboarddesigns and we'll send you riser layouts + plans.



› SPOOL TABLE + STOOLS

A **SB** original, copyrighted design.

Description Bar Height Table. Suitable for display or as a meeting surface. White or Maple available. Rental of a Set includes one matching stool.

- 2 Colors White Laminate Top/Base
-or-
Maple Ply Top/Base
Both w/ silver post.

Specs 24"Diameter x 40"H.

Call or email for more photos.



› FLOOR LAMPS - 2 STYLES

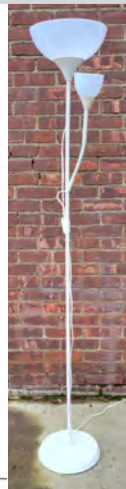
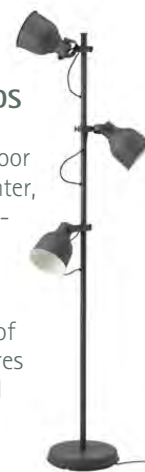
1. BLACK FLOORLAMP WITH 3 ADJUSTABLE HEADS

Description 3 lights-in-one!

Tilt, set height + direction of the 3 LED lamps on this floor lamp. As an example you can use one light as an uplighter, and 2 can be focused on your shelf display. Add brightness to your room + put focus on your product.

2. WHITE FLOOR UPLIGHTER +1 FLEX ARM LAMP

Description Great for upping the general brightness of the room by bouncing light off the ceiling. Also features 1 flexible arm with lamp to provide directional focused lighting. 2 heads total per floorlamp. LED bulbs.



SPRINGBOARD

INNOVATIVE DISPLAY SOLUTIONS

Springboard Inc., 300 Van Dale Road, West Hurley NY 12491
 PHONE (212) 367-9827 OR (646) 879-1276
 TOLL-FREE FAX (866) 483-0849
 ON-SITE CELL (646) 879-1276 WWW.springboarddesign.com
 EMAIL rentals@springboarddesign.com

CONTACT INFO

Office Contact Name _____
 Contact Email _____
 On-site Contact Name _____
 * On-site Contact Cell # _____
 Office Ph. _____
 Fax _____
 Co. Address _____

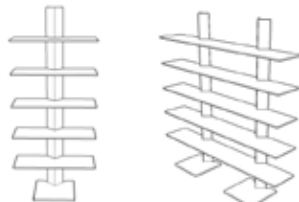
CREDIT CARD PAYMENT

Cardholder's Name _____
 C.Card # _____
 V-Code #* _____ C.Card Type _____
*V-Code is the last 3-digit # on back in sign. area for MC,VISA,DC, DISC + 4 digit on front for AMEX
 Exp. Date _____ Amount _____
 * Signature _____

NESTING SPEC'S

NESTING SHELVES are a **SB** original design.

Design Copyrighted by
 Springboard Inc. ©2001
 Pat. pending design.
 Produced in USA.



COLOR WHITE or MAPLE
STYLE 4 shelf (15.5 gaps) or 5 shelf (11.5 gaps) units
FIXTURE SIZES Single Upright units have 5 shelves @ 30"L ea.
 Double Upright units have 5 shelves @ 64"L ea.

DESCRIPTION A unique freestanding fixture that has a minimal styling which never distracts from your product. The shelving units clean design offers display surfaces unobstructed by vertical divisions. Multiple units can be ordered to create continuous display to wrap around a room.

TERMS: PLEASE READ CAREFULLY

- **Orders need to be confirmed:** SB confirms all orders received. Please call us if you place an order + DO NOT receive a "CONFIRMATION OF ORDER" fax or email. This will verify the availability of your fixtures + receipt of payment.
- **Re-Stocking:** 50% of rental fee is charged for fixtures returned at the show.
- **Wire Transfers:** Bank processing fees are \$50 per transaction.
- **Usage:** Rental usage period is through closing hour of show.
- **Loss + Damage:** Client is responsible for replacement cost (2.5 x Rental fees paid for item) of fixturing for loss or damage occurring as a result of mis-use of fixture, willful neglect or vandalism.
- **Drayage:** Drayage charges (if applicable) are not included in rental prices.
- **For complete Terms+Conditions:** Go to > www.springboarddesign.com > tradeshow services > rentals > terms + conditions

FOR OFFICE USE ONLY CONFIRMED w/ FAX? ☐ E-MAIL? ☐
 DATE PD _____ ORDER TAKEN BY _____

ORDER FORM >> RENTALS NYC

Prices valid thru 1/1/26 for listed show + venues only

CO. NAME: _____ -Just show Up!

SHOW: **FSNYE** **FOOTWEAR SHOW NY EXPO** BOOTH# _____
 ROOM # _____

VENUE: **PARK LANE HOTEL Room** SHOW DATE: **12/2 - 12/4/25**

ORDER DATE: _____

* CLIENT ARRIVAL DATE/TIME: _____

IMPORTANT! PLEASE ORDER EARLY - DISCOUNT ORDERING DEADLINES

DISCOUNT ORDER RATE applies for all orders completed+ **PAID-IN-FULL** within 6 BUSINESS DAYS PRIOR TO FIRST DAY OF SHOW.

SHOW ORDER RATE Orders completed+ **Paid for** after the Discount period expires and show-site orders.

SHELVING	QTY	STANDARD	SHOW	TOTAL
Maple Single Nesting® 5 SHELF		@ \$130.	\$155.	=\$
Maple Double Nesting® 5 SHELF		@ \$260.	\$285.	=\$
White Single Nesting® 5 SHELF		@ \$170.	\$195.	=\$
White Double Nesting® 5 SHELF		@ \$340.	\$365.	=\$
Maple Single Nesting® 4 SHELF		@ \$130.	\$155.	=\$
Maple Double Nesting® 4 SHELF		@ \$260.	\$285.	=\$
White Single Nesting® 4 SHELF		@ \$170.	\$195.	=\$
White Double Nesting® 4 SHELF		@ \$340.	\$365.	=\$
SPOOL TABLE®+STOOLS	QTY	STANDARD	SHOW	TOTAL
Spool Table® (Maple)+ 2 stools		@ \$100.set	\$115.	=\$
Spool Table® (White)+ 2 stools		@ \$100.set	\$115.	=\$
Extra Bar Stools (Maple)		@ \$30. ea.	\$45.	=\$
Extra Bar Stools (White)		@ \$30. ea.	\$45.	=\$
Spool Table® only (Maple)		@ \$60.	\$75.	=\$
Spool Table® only (White)		@ \$60.	\$75.	=\$

BED TOPPERS + RISERS	QTY	STANDARD	SHOW	TOTAL
Bed Topper® King -- White		@ \$100.	\$115.	=\$
Bed Topper® Double --White		@ \$100.	\$115.	=\$
LG Riser 32"L x 20"D x 12"H (WH)		@ \$55.	\$70.	=\$
SM Riser 24"L x 12"D x 9"H (WH)		@ \$25.	\$40.	=\$

LIGHTING	QTY	STANDARD	SHOW	TOTAL
Black Floor Lamp - 3 Head		@ \$140.	\$155.	=\$
White Floor Lamp - 2 Head		@ \$125.	\$140.	=\$

OTHER	QTY	STANDARD	SHOW	TOTAL

RENTAL TOTAL > Includes: Deliv./Pick-up, I+D, Usage	=\$
OTHER >	=\$
SUBTOTAL	=\$

NYS SALES TAX 8.875 % >	=\$
-------------------------	-----

AMOUNT DUE > A "Confirmation of Order" fax will be sent to you as your receipt