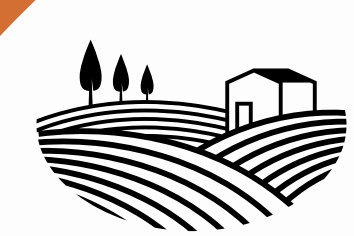


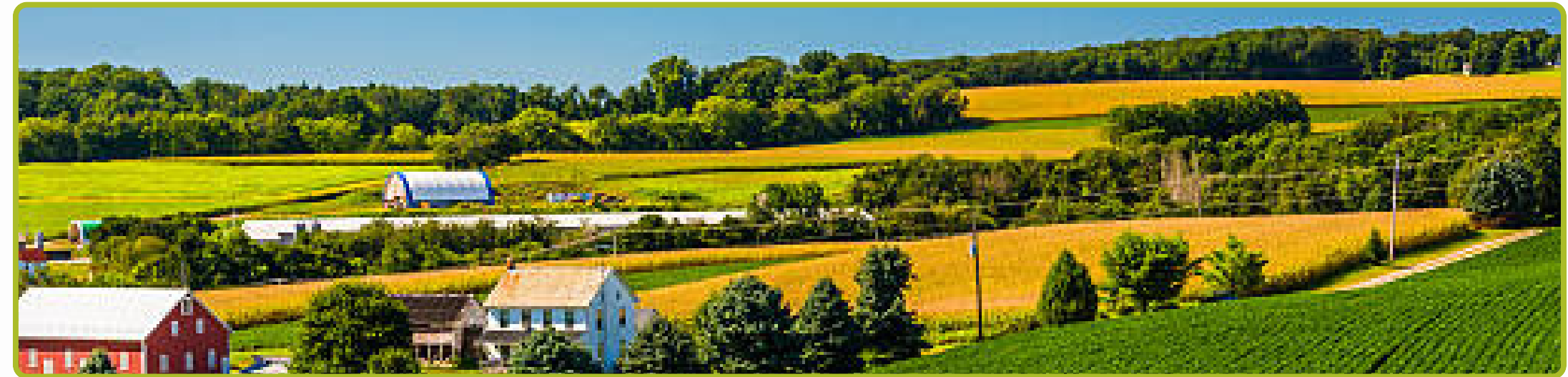
FRANKLIN TOWNSHIP - CHAPTERS 1, 2, AND 3
RURAL CHARACTER AND OPEN SPACE | BALANCED AND STRATEGIC GROWTH |
COMMUNITY ROOTS AND FAMILY LIFE



Rural Character & Open Space

Regarding any of the following goals, please leave your feedback.

Protect actively farmed lands from incompatible development and preserve the long-term viability of agriculture.



Limit suburban-style development in key view corridors and areas where open landscapes define local identity.

☐ = Approve

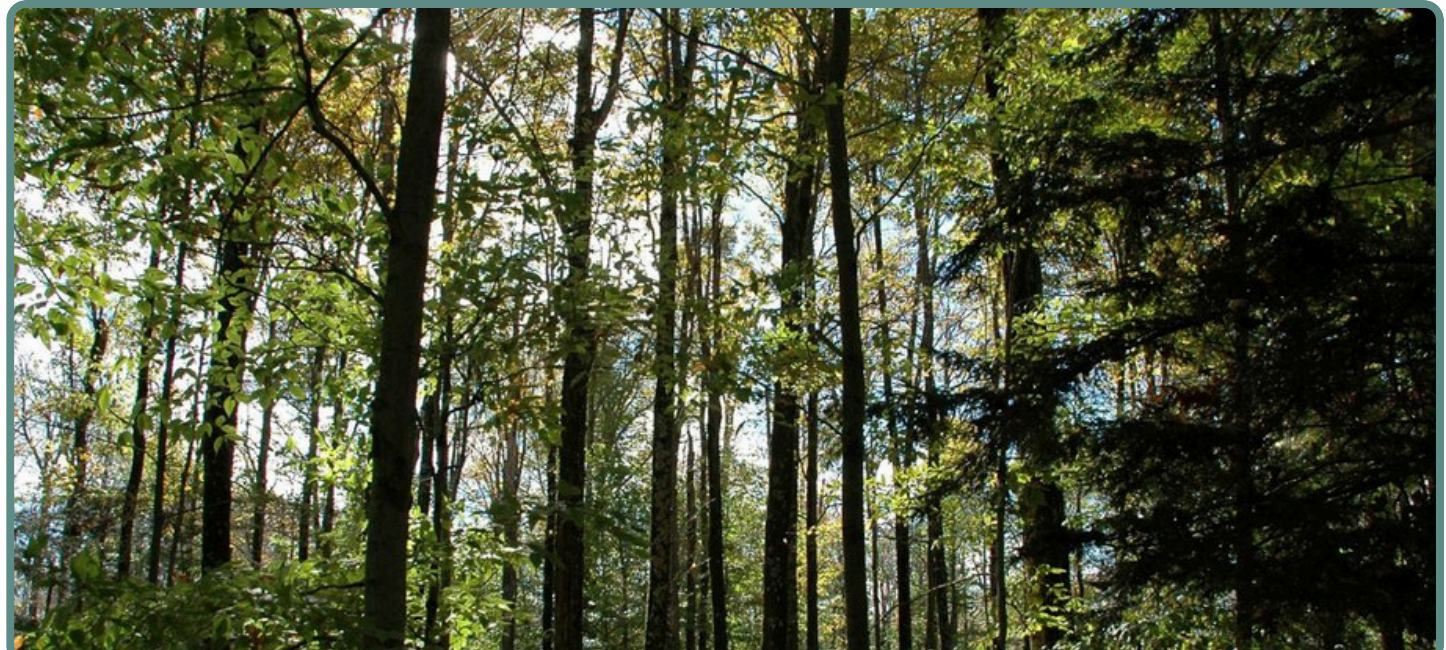
☐ = Disapprove



Preserve woodlands, waterways, and sensitive habitats through intentional land use planning and resource protection policies.

☐ = Disapprove

☐ = Approve



Balanced & Strategic Growth

Regarding any of the following goals, please leave your feedback.

Concentrate new development in areas with existing or planned infrastructure to minimize costs and preserve rural areas.

☐ = Approve

☐ = Disapprove



Encourage business growth that aligns with the rural economy, including agriculture, trades, and home-based enterprises.

☐ = Approve

☐ = Disapprove



Ensure that updates to zoning, infrastructure, and services reflect a commitment to rural preservation and managed change.

☐ = Disapprove

☐ = Approve



Community Roots & Family

Regarding any of the following goals, please leave your feedback.

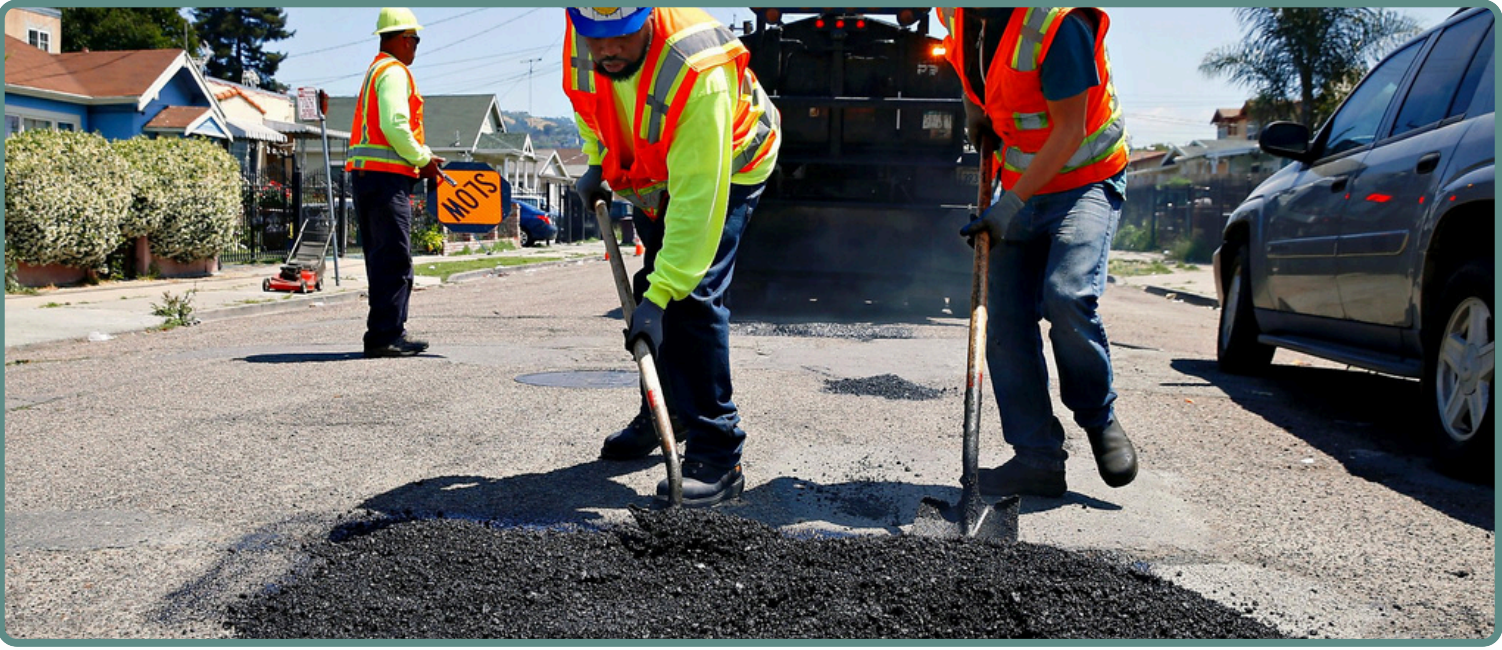
Support land use and housing strategies that enable families to stay and grow in the community across generations.



Ensure residential areas have the infrastructure and services needed for long-term quality of life.

☐ = Approve

☐ = Disapprove



Foster participation in planning, governance, and volunteer efforts that strengthen local commitment.

☐ = Disapprove

☐ = Approve



FRANKLIN TOWNSHIP - CHAPTERS 4 AND 5

HISTORIC PRESERVATION | RECREATION, CONNECTIVITY, & WELL-BEING



Historic Preservation & Pride

Regarding any of the following goals, please leave your feedback.

Protect historic homes, barns, cemeteries, and other sites that embody the community's heritage.

● = Approve

● = Disapprove



Utilize zoning overlays, design guidelines, and conservation incentives to maintain township identity.

● = Approve

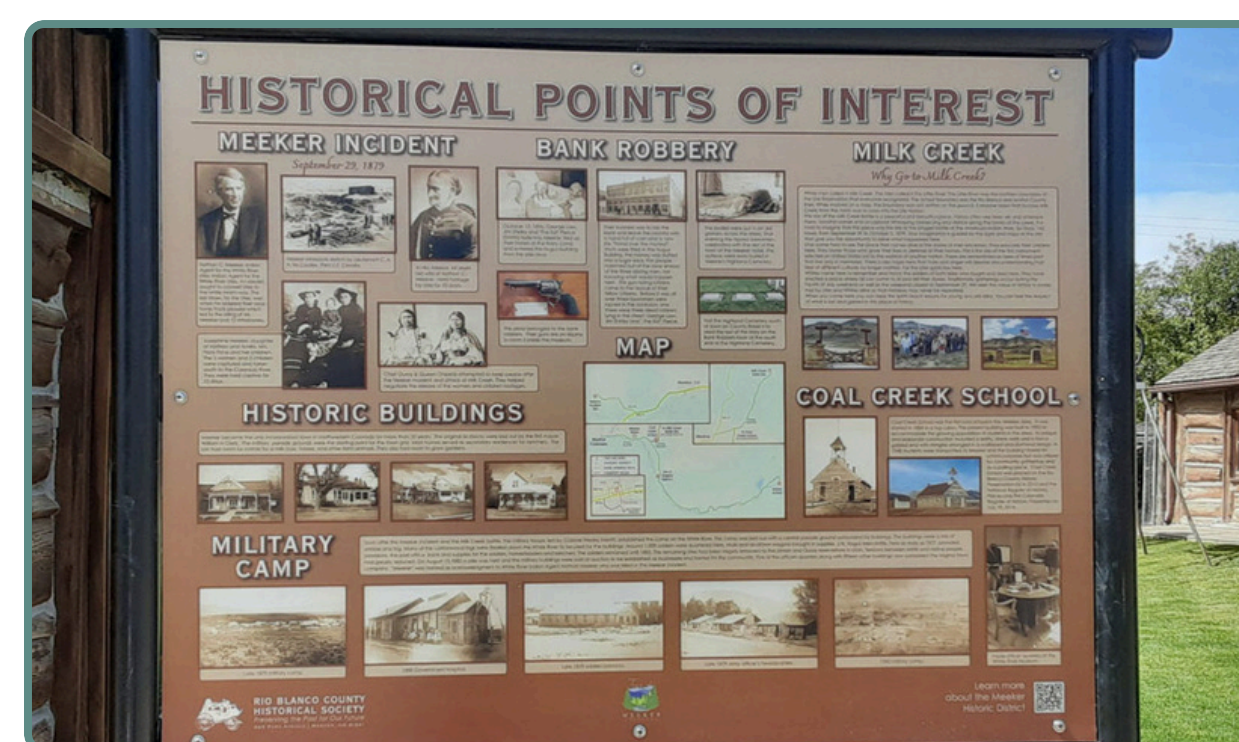
● = Disapprove



Celebrate the community's cultural heritage through events, signage, and public-facing preservation initiatives.

● = Approve

● = Disapprove



Recreation, Connectivity & Well-Being

Regarding any of the following goals, please leave your feedback.

Increase access to passive and active recreation opportunities by growing and linking open space assets.

● = Approve

● = Disapprove



Enhance pedestrian and bike infrastructure to support safe and accessible outdoor activity for all users.

● = Approve

● = Disapprove



Design neighborhoods and facilities that support wellness, mobility, and access to healthy lifestyles.

● = Approve

● = Disapprove

