

MARION TOWNSHIP - CHAPTERS 1, 2, AND 3
RURAL CHARACTER AND OPEN SPACE | BALANCED AND STRATEGIC GROWTH |
COMMUNITY ROOTS AND FAMILY LIFE



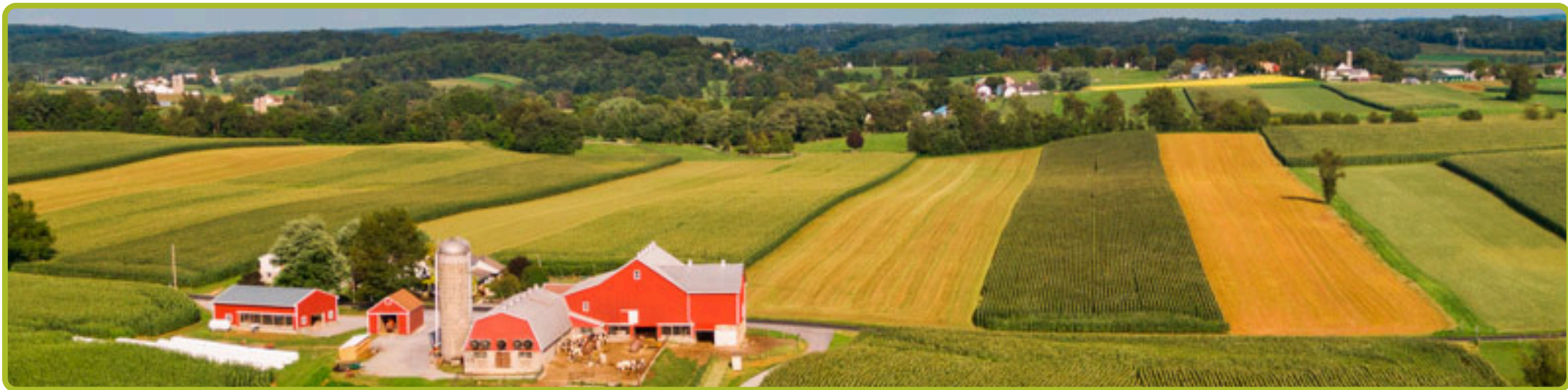
Rural Character & Open Space

Regarding any of the following goals, please leave your feedback.

Protect active farmland by guiding development away from key agricultural soils and working farms.

● = Approve

● = Disapprove



Safeguard woodlands, steep slopes, and water resources using land use tools and conservation partnerships.

● = Approve

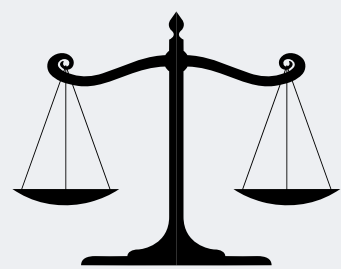
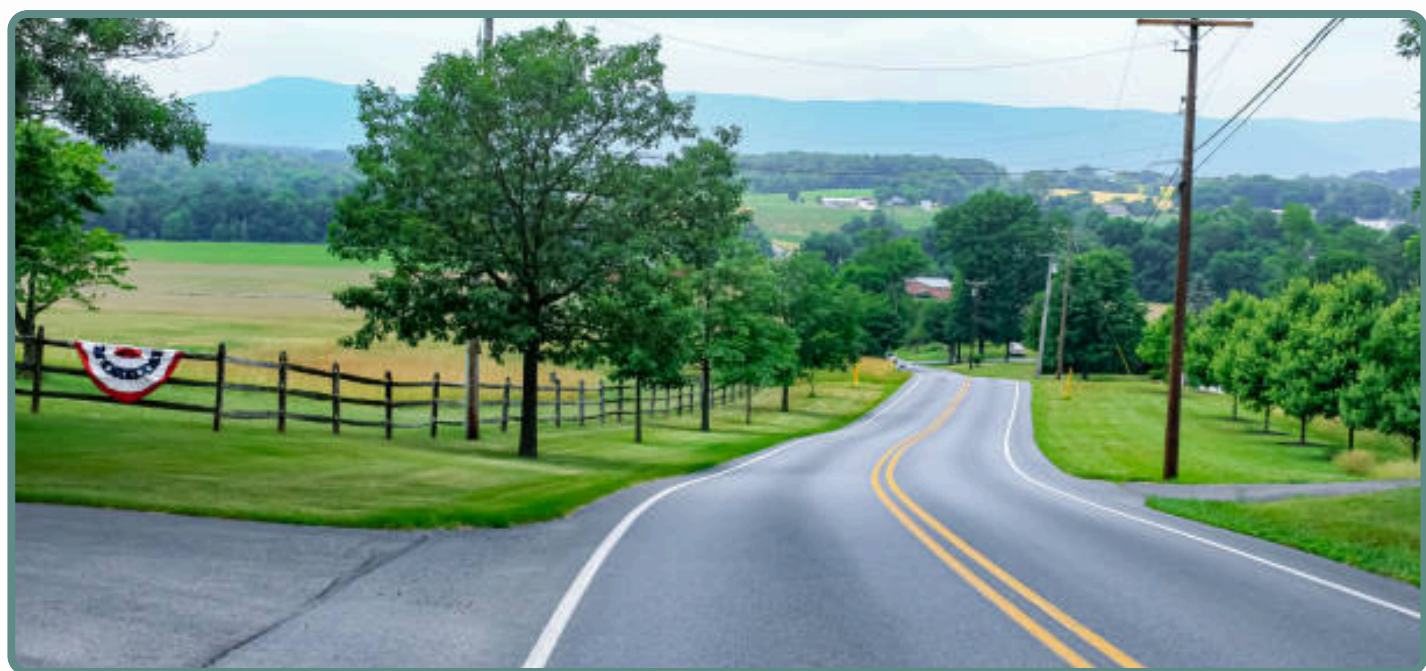
● = Disapprove



Shape land use regulations to ensure that new development reinforces, rather than diminishes, the township's rural character.

● = Disapprove

● = Approve



Balanced & Strategic Growth

Regarding any of the following goals, please leave your feedback.

Focus new development near existing roadways and utility service areas to reduce sprawl and infrastructure costs.

● = Approve

● = Disapprove



Encourage businesses in trades, agriculture, home occupations, and rural tourism that align with the township's scale and economy.

● = Approve

● = Disapprove



Use planning tools and periodic updates to ensure growth aligns with preservation values and community priorities.

● = Disapprove

● = Approve



Community Roots & Family

Regarding any of the following goals, please leave your feedback.

Allow flexible housing arrangements and family land divisions to maintain intergenerational presence and ownership.

● = Approve

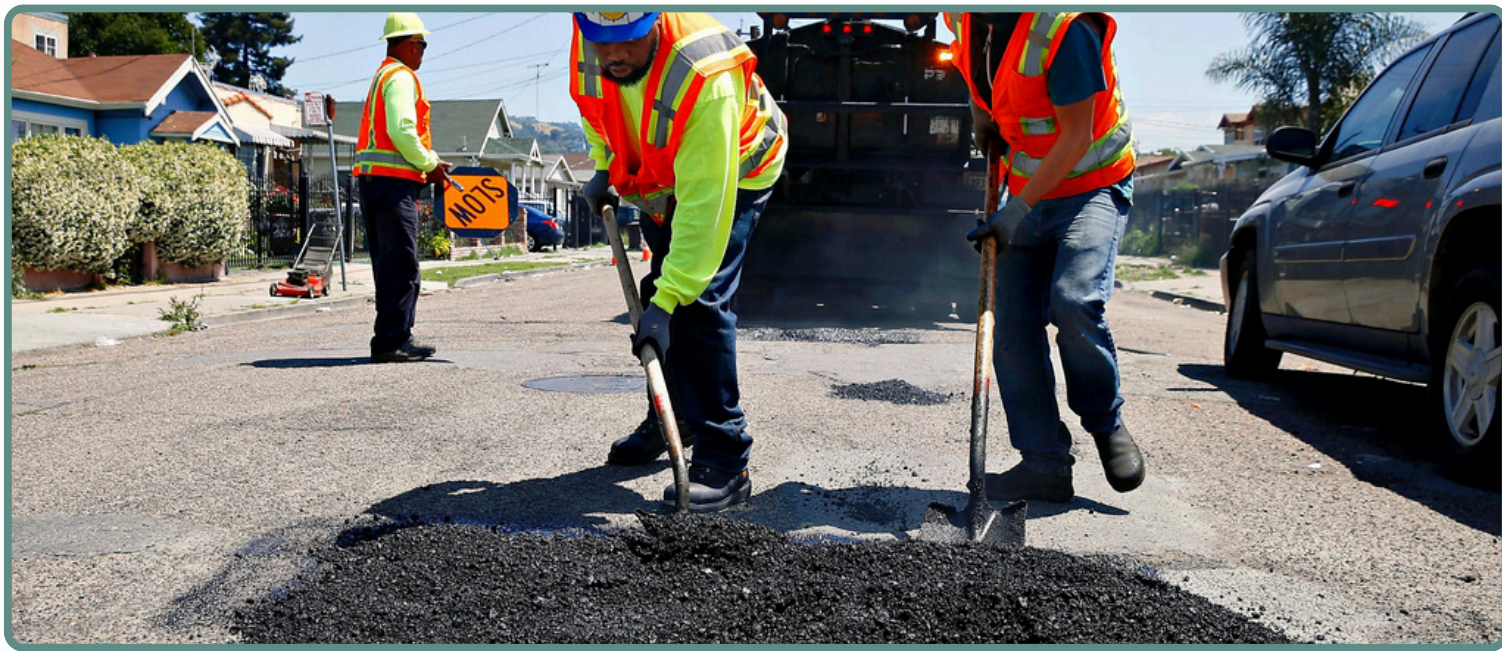
● = Disapprove



Maintain infrastructure, protect residential areas from incompatible uses, and coordinate with public safety services.

● = Approve

● = Disapprove



Encourage volunteerism, public input, and local pride through community events and leadership opportunities.

● = Disapprove

● = Approve



MARION TOWNSHIP - CHAPTERS 4 AND 5

HISTORIC PRESERVATION | RECREATION, CONNECTIVITY, & WELL-BEING



Historic Preservation & Pride

Regarding any of the following goals, please leave your feedback.

Identify, document, and preserve key historic properties that reflect Marion Township's rural history.

☐ = Approve

☐ = Disapprove



Introduce tools to safeguard character-defining sites and structures.

☐ = Approve

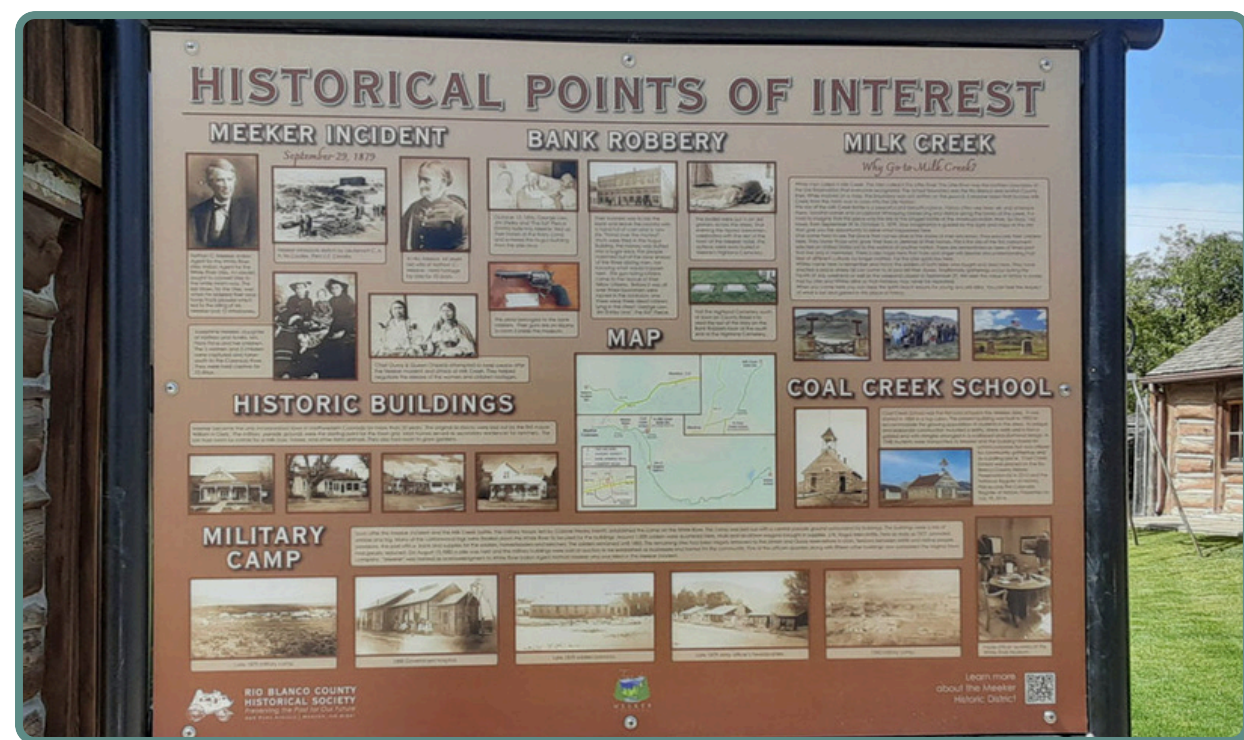
☐ = Disapprove



Celebrate and interpret the township's history through signage, programs, and local events.

☐ = Approve

☐ = Disapprove



Recreation, Connectivity & Well-Being

Regarding any of the following goals, please leave your feedback.

Identify opportunities to preserve land or partner with neighbors for new public or semi-public recreational areas.

☐ = Approve

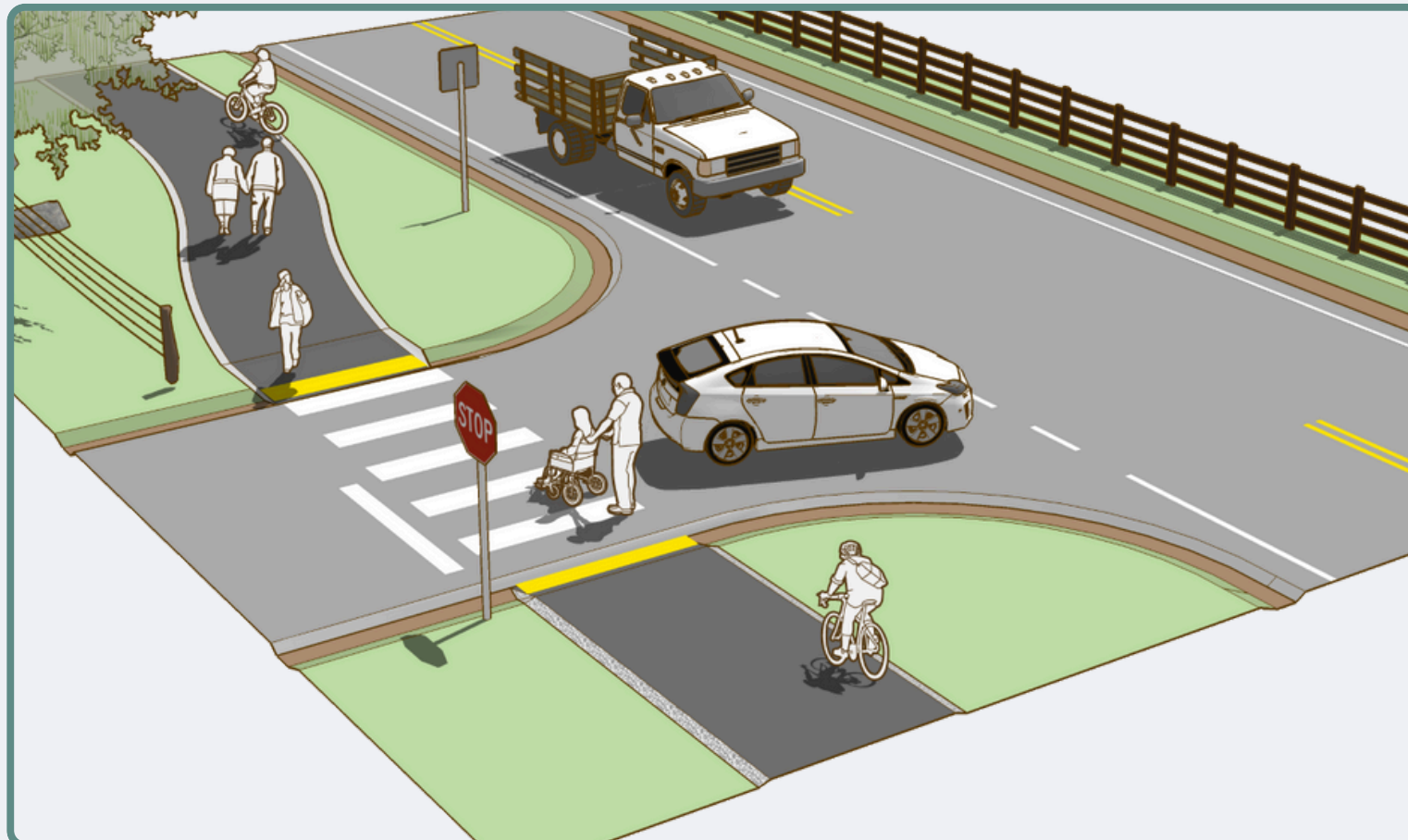
☐ = Disapprove



Prioritize shoulder improvements, shared-use paths, and safe crossings to enhance walkability and biking access.

☐ = Approve

☐ = Disapprove



Encourage future development patterns that incorporate green space, trails, and community gathering areas.

☐ = Approve

☐ = Disapprove

