



# NORTH SEWICKLEY TOWNSHIP - CHAPTERS 1, 2, AND 3

## BURAL CHARACTER AND OPEN SPACE | BALANCED AND STRATEGIC GROWTH | COMMUNITY ROOTS AND FAMILY LIFE



### Rural Character & Open Space

Regarding any of the following goals, please leave your feedback.

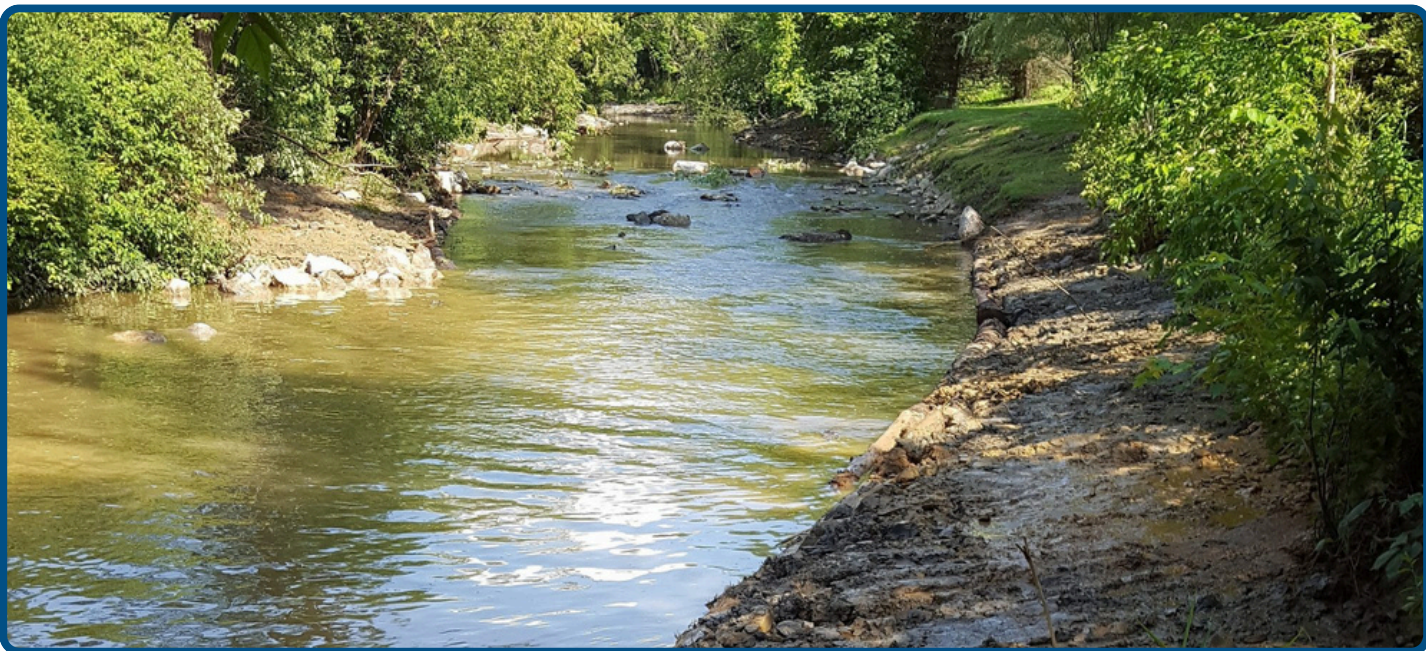
Discourage large-lot sprawl and preserve open landscapes by directing development away from core farmland and ridge views.



● = Approve

● = Disapprove

Safeguard steep slopes, forested areas, and Connoquenessing Creek through conservation standards and sensitive development practices.



● = Approve

● = Disapprove

Update zoning to require rural-appropriate lot sizes, buffers, and siting standards in areas beyond the PA-65 corridor.



● = Disapprove

● = Approve



### Balanced & Strategic Growth

Regarding any of the following goals, please leave your feedback.

Concentrate new development near infrastructure to protect open land and reduce long-term maintenance burdens.



● = Approve

● = Disapprove

Encourage rural-friendly businesses such as contractors, trades, and farm-based enterprises in suitable locations along key corridors.



● = Approve

● = Disapprove

Develop policies that adapt to future development pressure without compromising rural quality of life.



● = Disapprove

● = Approve



### Community Roots & Family

Regarding any of the following goals, please leave your feedback.

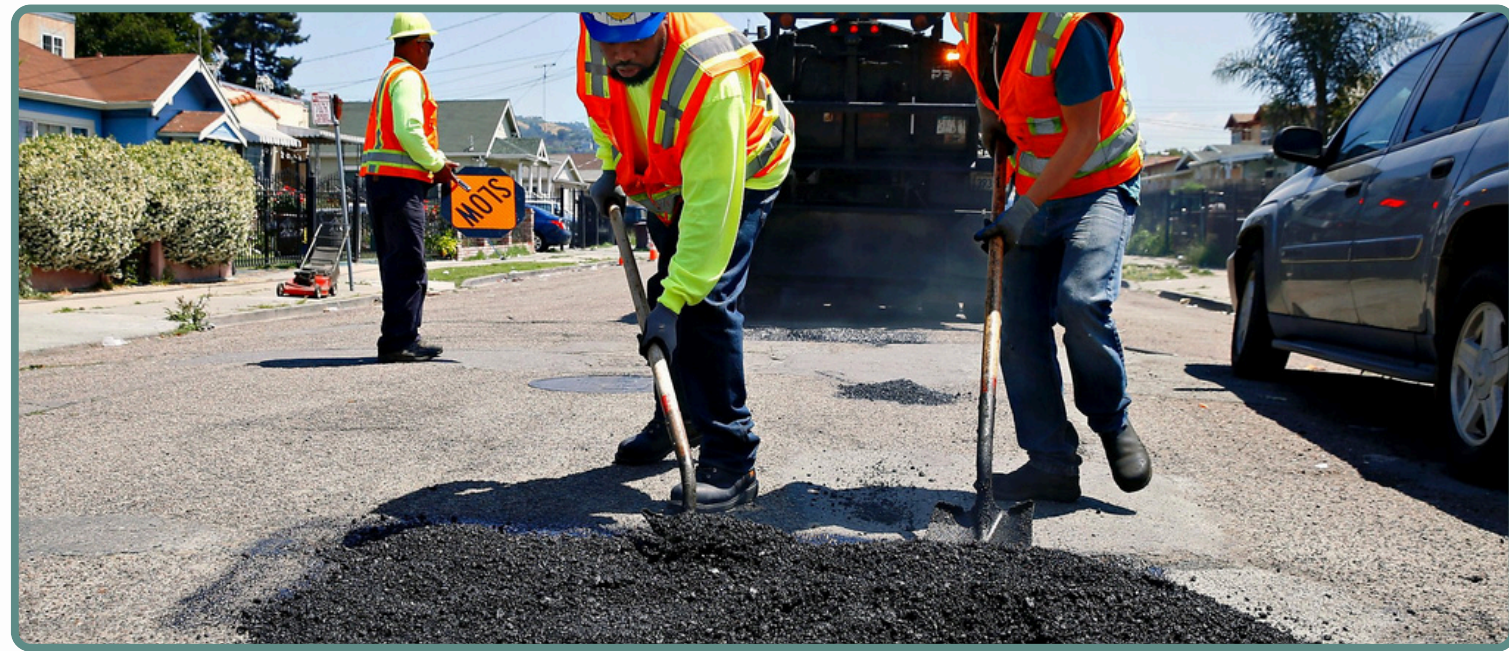
Enable accessory dwellings, family subdivisions, and multi-generational housing arrangements to help families stay local.



● = Approve

● = Disapprove

Invest in targeted road, drainage, and safety improvements that benefit established and growing neighborhoods.



● = Approve

● = Disapprove

Create avenues for residents to participate in planning, decision-making, and township-sponsored events.



● = Disapprove

● = Approve





# NORTH SEWICKLEY TOWNSHIP - CHAPTERS 4 AND 5

## HISTORIC PRESERVATION | RECREATION, CONNECTIVITY, & WELL-BEING



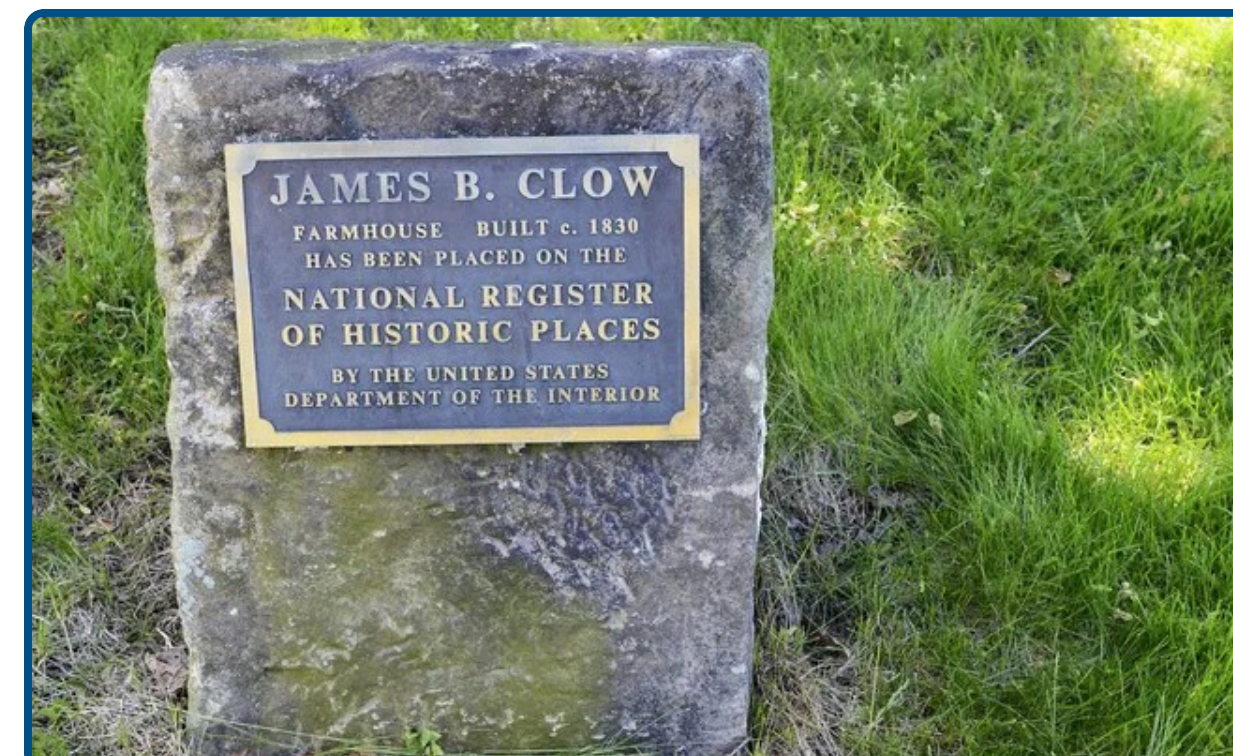
### Historic Preservation & Pride

Regarding any of the following goals, please leave your feedback.

Inventory historic resources and pursue options for preservation, including reuse, conservation, or local recognition.

● = Approve

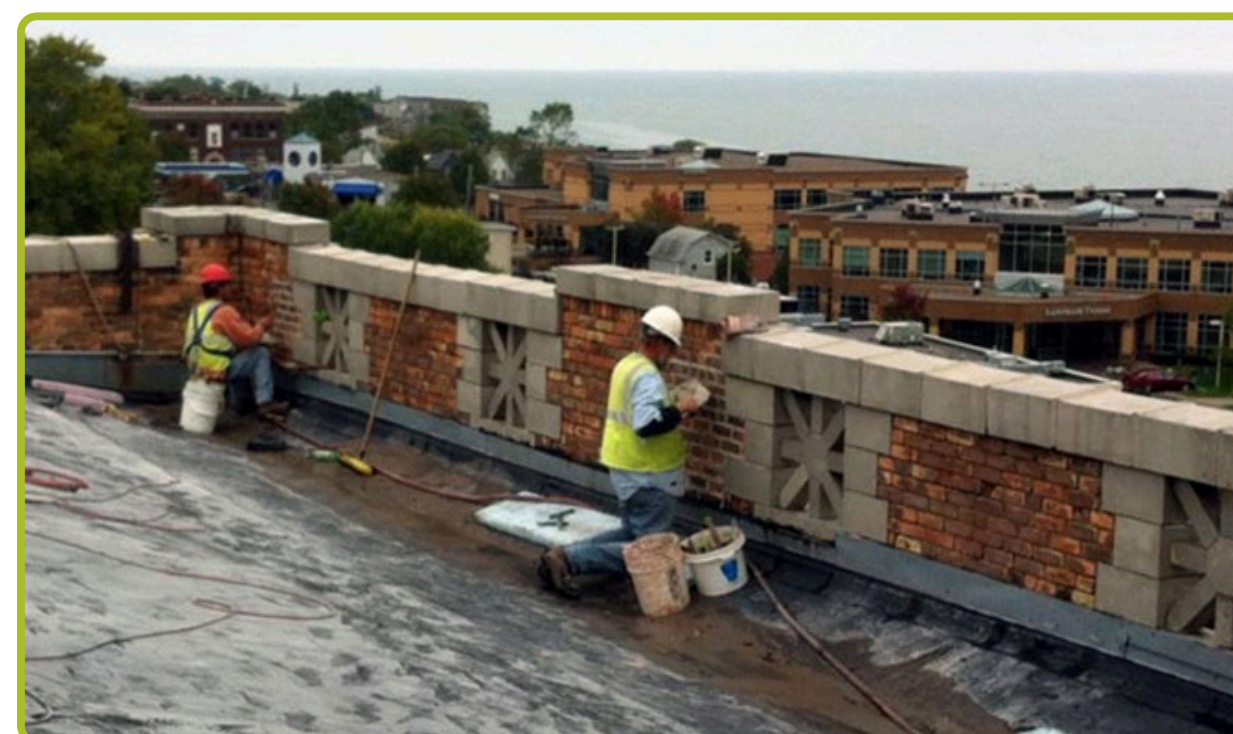
● = Disapprove



Explore overlay districts or design guidance to help maintain the architectural character of historic sites.

● = Approve

● = Disapprove



Encourage community programs and events that honor North Sewickley's agricultural and civic traditions.

● = Approve

● = Disapprove



### Recreation, Connectivity & Well-Being

Regarding any of the following goals, please leave your feedback.

Identify ways to provide more access to Connoquenessing Creek, trails, and natural open space for residents.

● = Approve

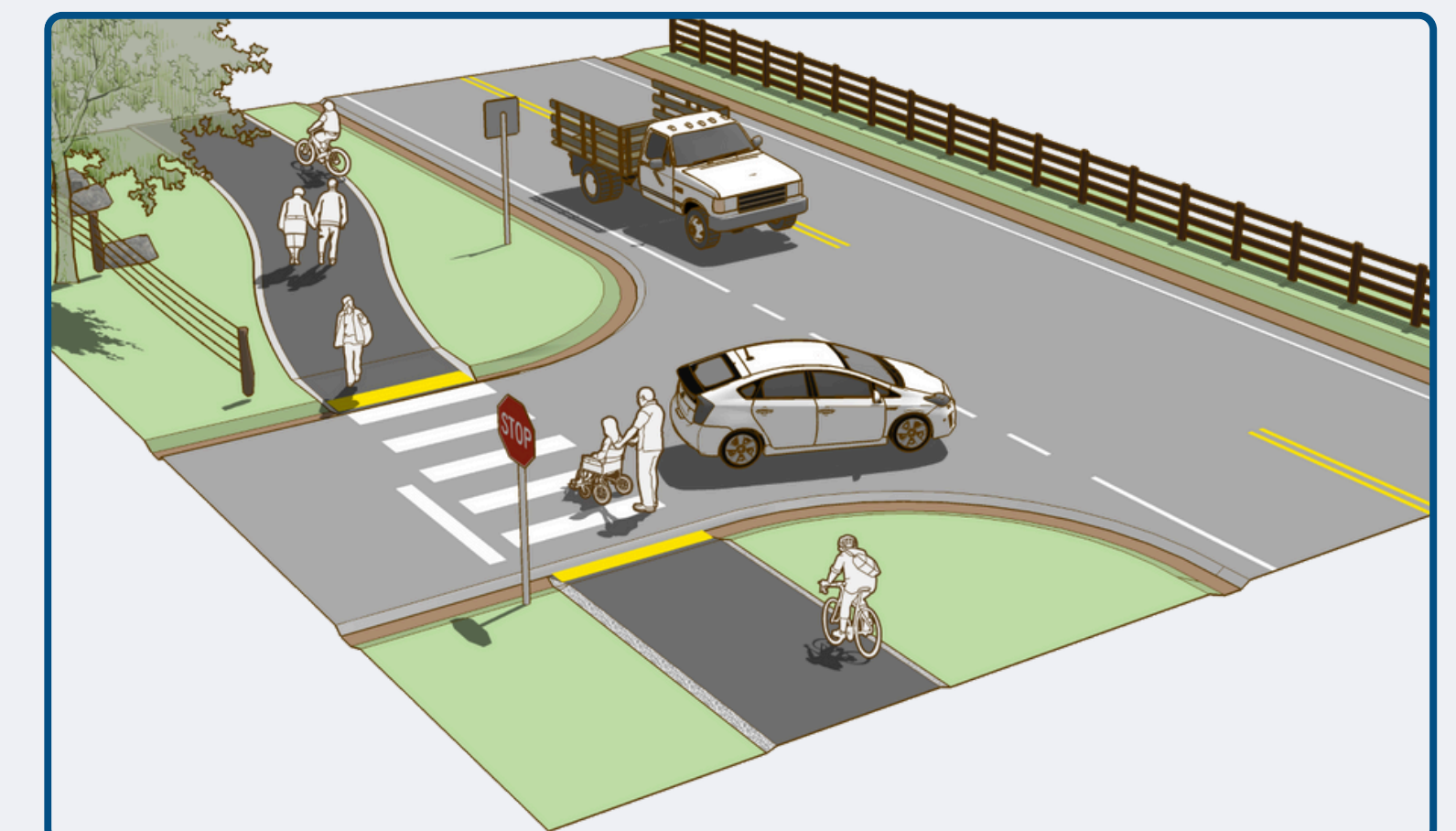
● = Disapprove



Target safe walking and biking improvements near schools, churches, and community facilities.

● = Approve

● = Disapprove



Promote development that integrates trails, parks, or gathering areas into residential layouts where appropriate.

● = Approve

● = Disapprove

