



GX Integrated System

Catalog

2022-2023



The GX line system offers a revolutionary wall solution that maximizes spatial flexibility yet is uniquely simple. A light partition without visible supports or compound connections, the partitions are lighter in scale yet robust in their ability to be reconfigured.

The GX line system responds to complex space planning with simple elegance, reduce time for installation and reconfiguration.

In full form the GX line system offers unlimited run of glass store front unobstructed by posts or supporting architecture. These continuous glass panels maximize the amount of natural daylight throughout an environment.

The GX line system easily integrates with the system's doors delivering unprecedented level of flexibility and functionality. When used together, the possibilities with the GX line system are limitless.

The GX line system supports modular furniture components panel systems and loose furniture effortlessly, blending within the architecture of these demountable wall solutions.

As business needs change, the GX line system offers the freedom and flexibility to adapt with office moves and or remove office spaces, switch private offices into a conference room and back again, move door placements, add or change architectural details. With GX line system, it is easy to adjust the surrounding tone of a space.

The GX line's modern rectilinear profiles offer a clear simple and elegant design creating sophisticated compelling and personalized spaces for any work environment.

1 CEILING

- a. BANDRASTER 9
- b. METAL CEILING 13
- c. INTEGRATED LIGHTING 15
- d. INTEGRATED SHADING 19

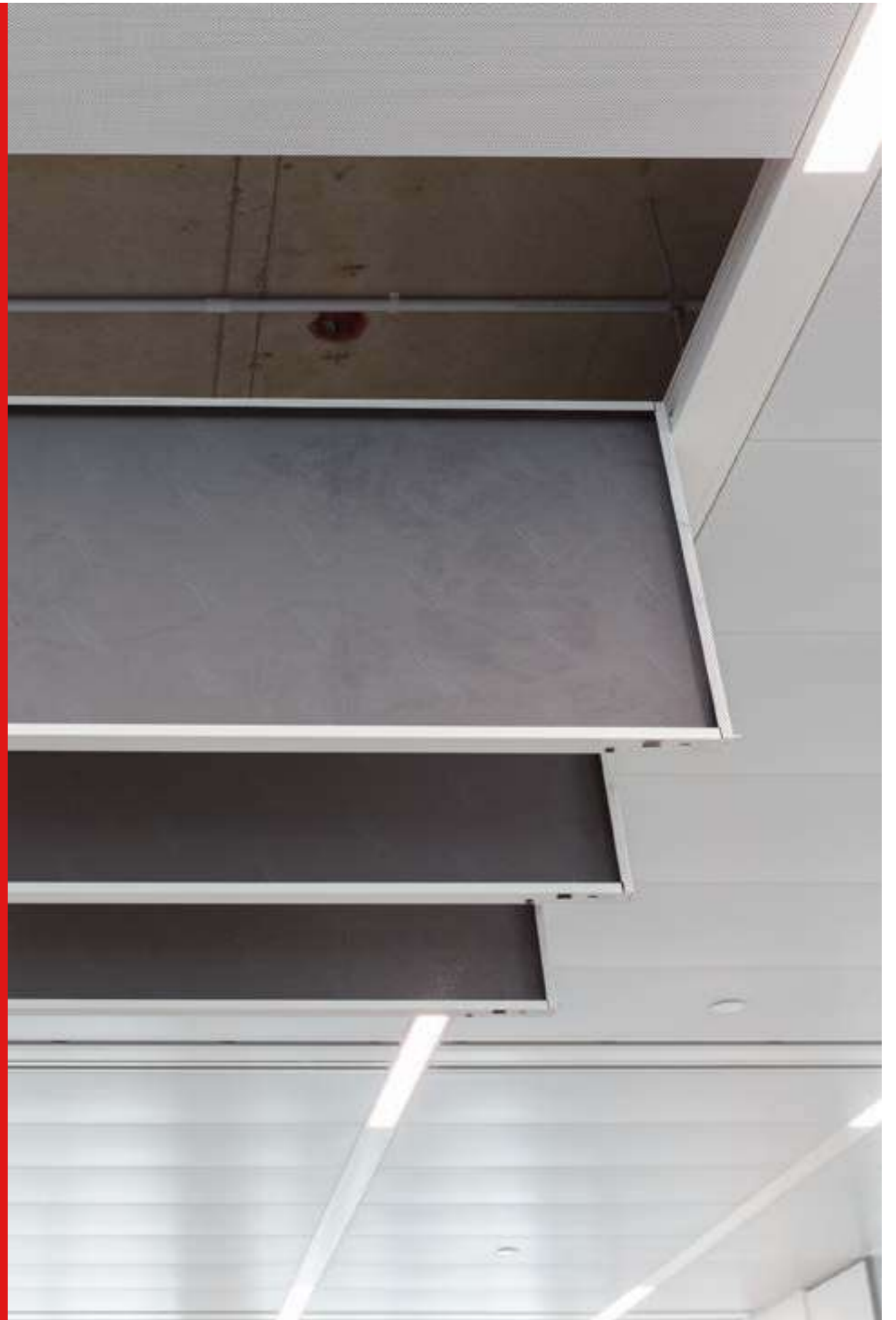
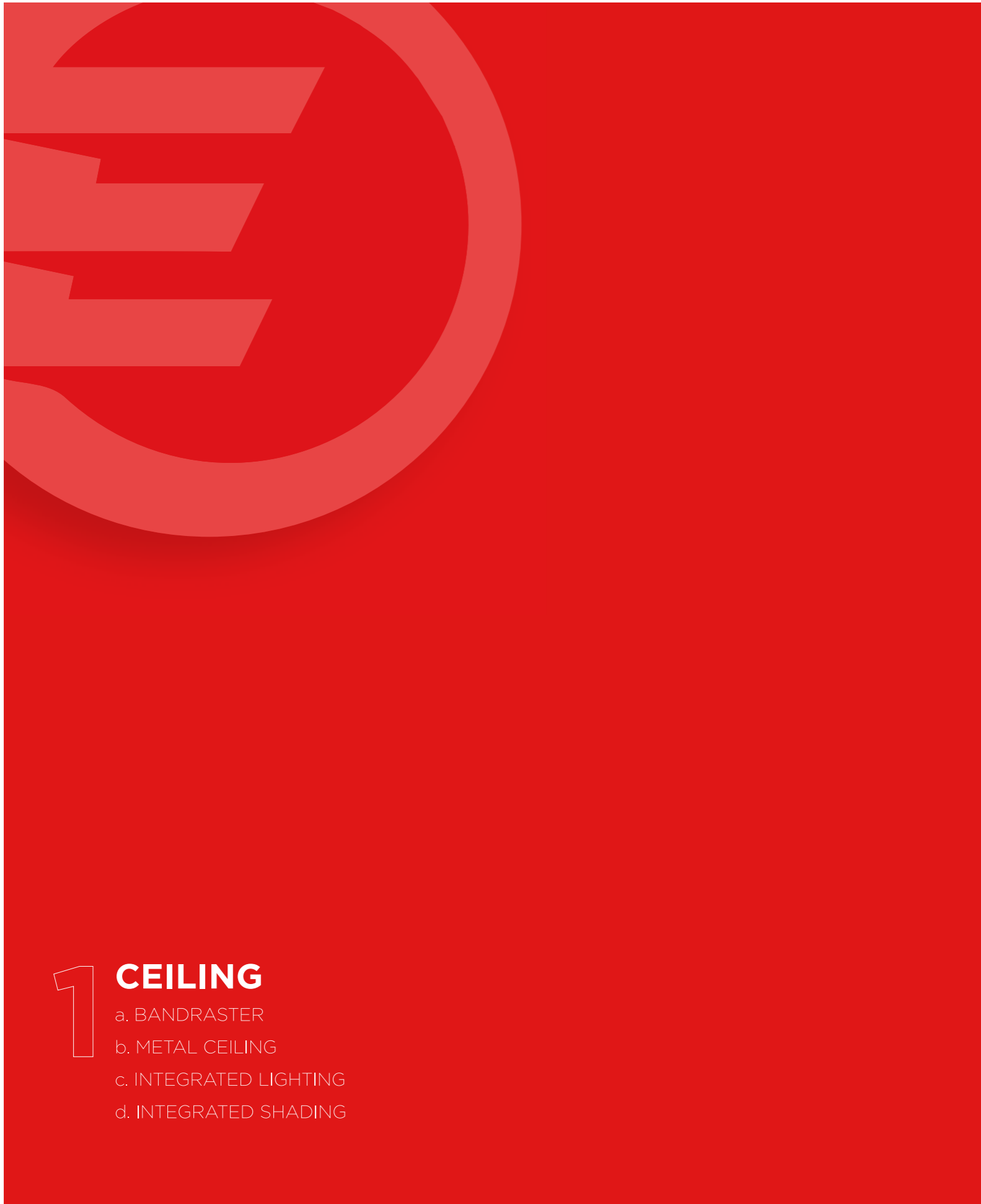
2 WALLS & DOORS

- a. GLAZED WALLS 23
- b. SOLID WALLS 27

3 FLOOR

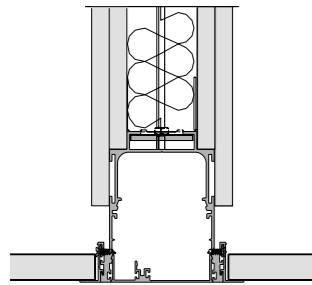
- a. RAISED FLOOR 47
- b. REVISION LANES & PANELS 49



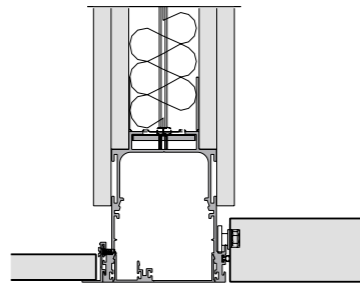




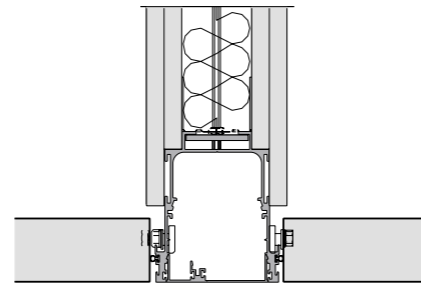
INTEGRATED SYSTEM SUSPENDED CEILING COMBINATIONS



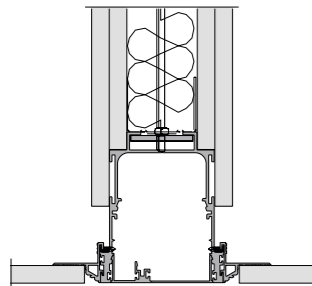
Bandrastrer with an add-on "lay-on" clip from either sides for demountable panel installation divided by means of an acoustic barrier



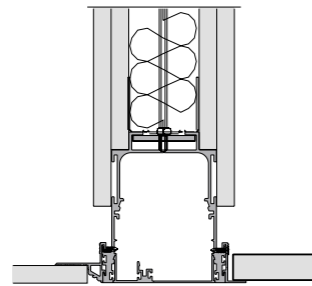
Bandrastrer with an add-on "lay-on" clip from one side for demountable panel installation and an add-on "rail" clip for a swing down retractable metal ceiling panel installation on the opposite side, divided by means of an acoustic barrier



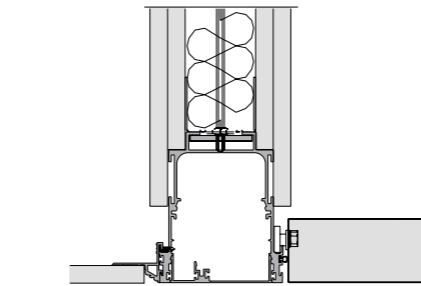
Bandrastrer with an add-on "rail" clip from either sides for a swing down retractable metal ceiling panel installation, divided by means of an acoustic barrier



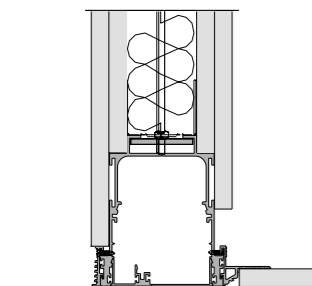
Bandrastrer with an add-on "zero-edge" clip for a seamless plasterboard ceiling installation from either sides, divided by means of an acoustic barrier



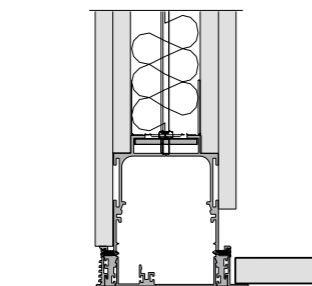
Bandrastrer with an add-on "zero-edge" clip for a seamless plasterboard ceiling installation from one side and an add-on "lay-on" clip for a demountable panel installation on the opposite side, divided by means of an acoustic barrier



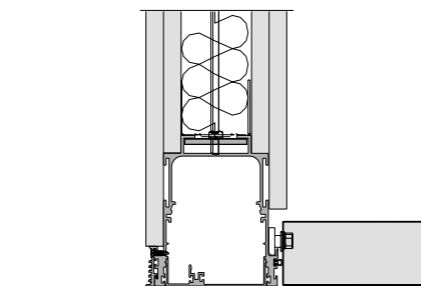
Bandrastrer with an add-on "zero-edge" clip for a seamless plasterboard ceiling installation from one side and an add-on "rail" clip for swing down retractable metal ceiling panel installation on the opposite side, divided by means of an acoustic barrier



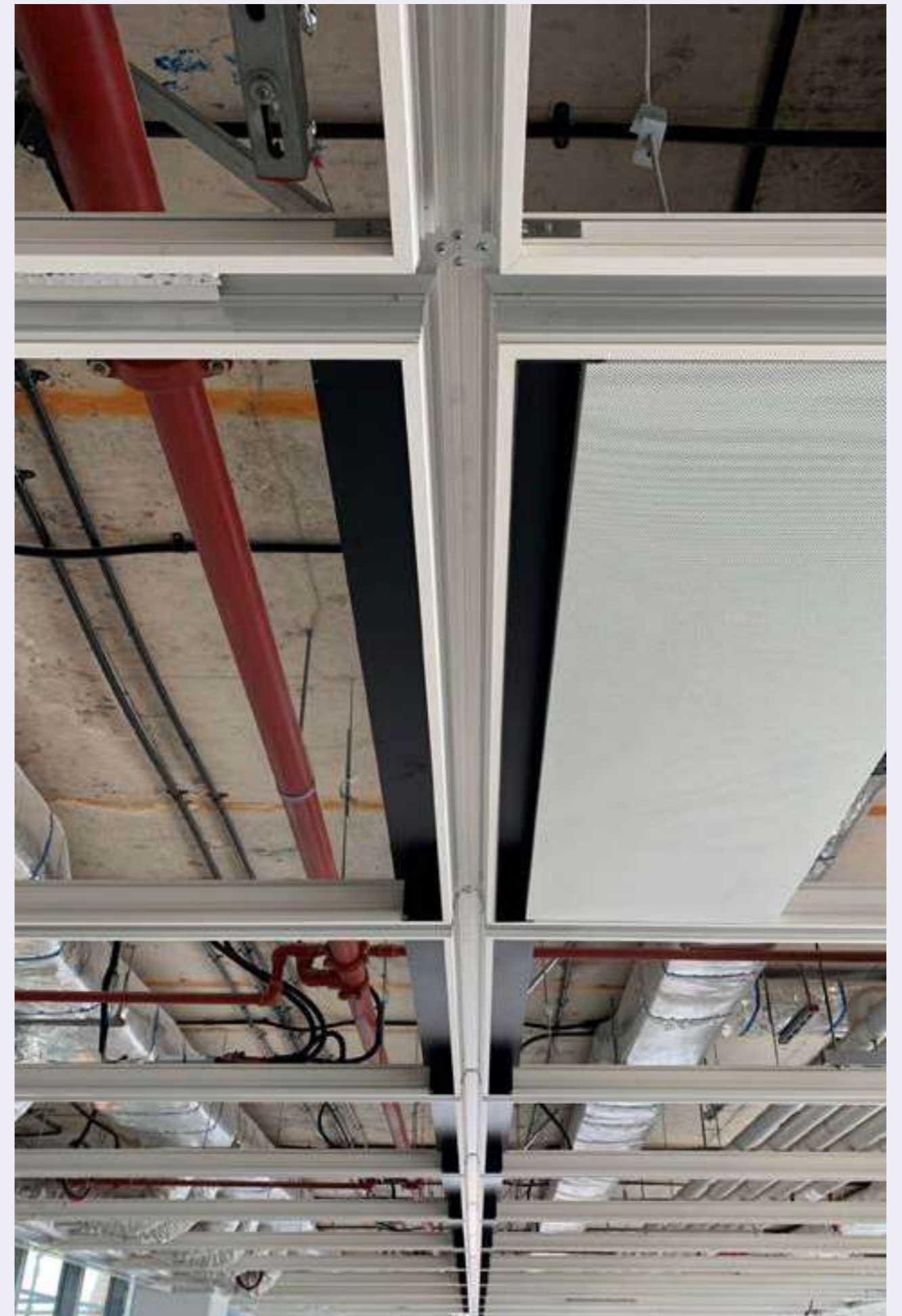
Bandrastrer with an add-on "zero-edge" clip for a seamless plasterboard bulkhead installation from one side and an add-on "zero-edge" clip for a seamless plasterboard ceiling installation on the opposite side, divided by means of an acoustic barrier



Bandrastrer with an add-on "zero-edge" clip for a seamless plasterboard bulkhead installation from one side and an add-on "lay-on" clip for a demountable panel installation on the opposite side, divided by means of an acoustic barrier

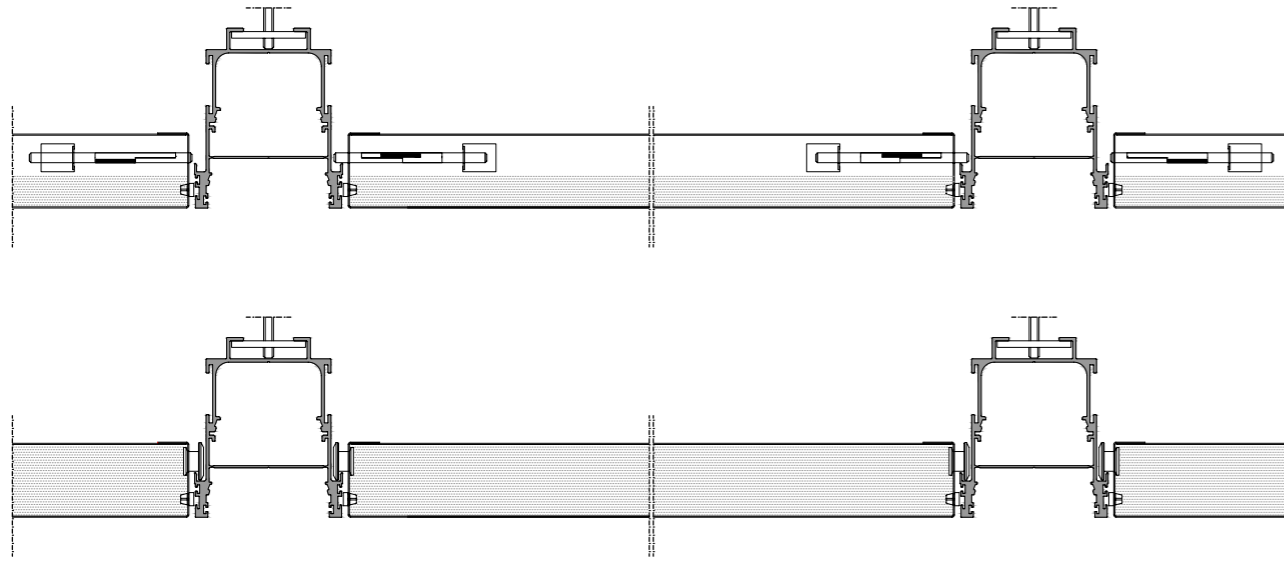


Bandrastrer with an add-on "zero-edge" clip for a seamless plasterboard bulkhead installation from one side and an add-on "rail" clip for swing down retractable metal ceiling panel installation on the opposite side, divided by means of an acoustic barrier



INTEGRATED SYSTEM SUSPENDED CEILING COMBINATIONS

Suspended ceiling with sound-absorbing and self-supported perforated metal panels with a swing-down retractable operation along both ends of the bandrastrer.

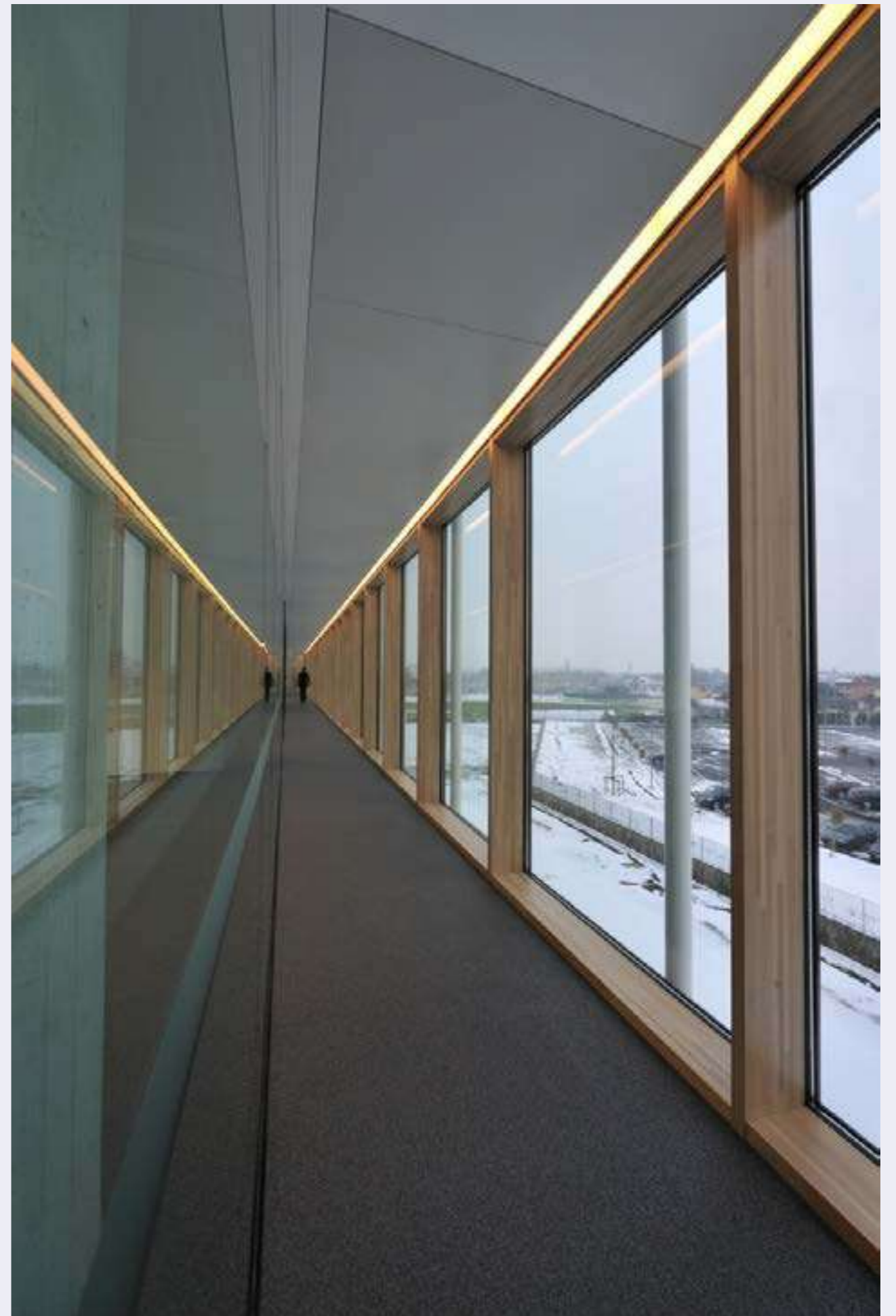
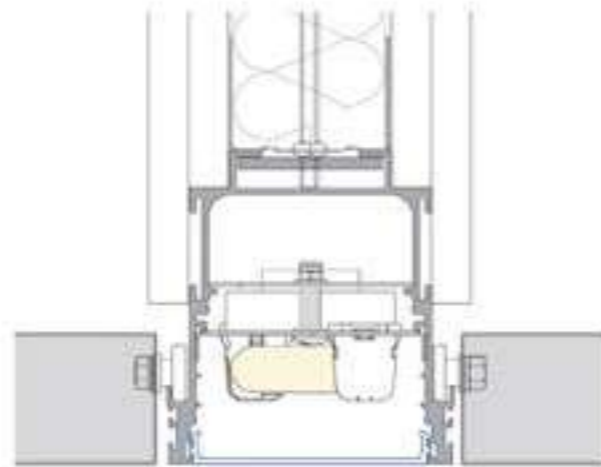


INTEGRATED SYSTEM CONTINUOUS LIGHTING SYSTEM

The "continuous-row lighting" solution is designed to be integrated into the multifunctional ceiling profile.

Available in both fluorescent T5 and LED versions, the lighting elements can be used to create an efficient lighting design within the ceiling matrix.

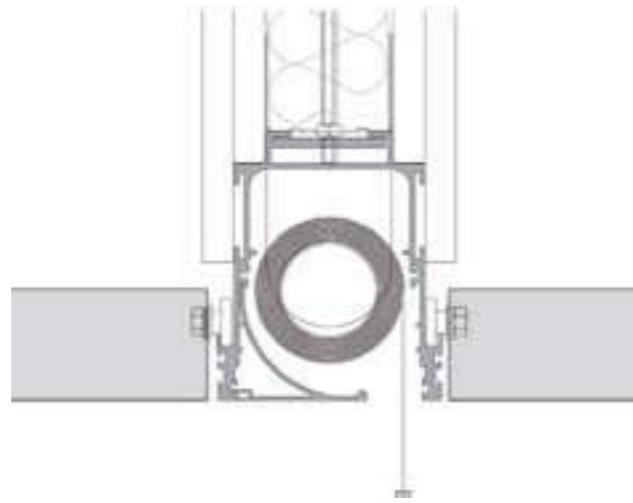
The lighting kit is covered by an innovative reflector made of micro-prismatic transparent polycarbonate profile, which is flush mounted onto the bandraster.



INTEGRATED SYSTEM BUND ROLLER

The ceiling multifunctional profile is also designed to house in motorized sunscreens or even projection screens.

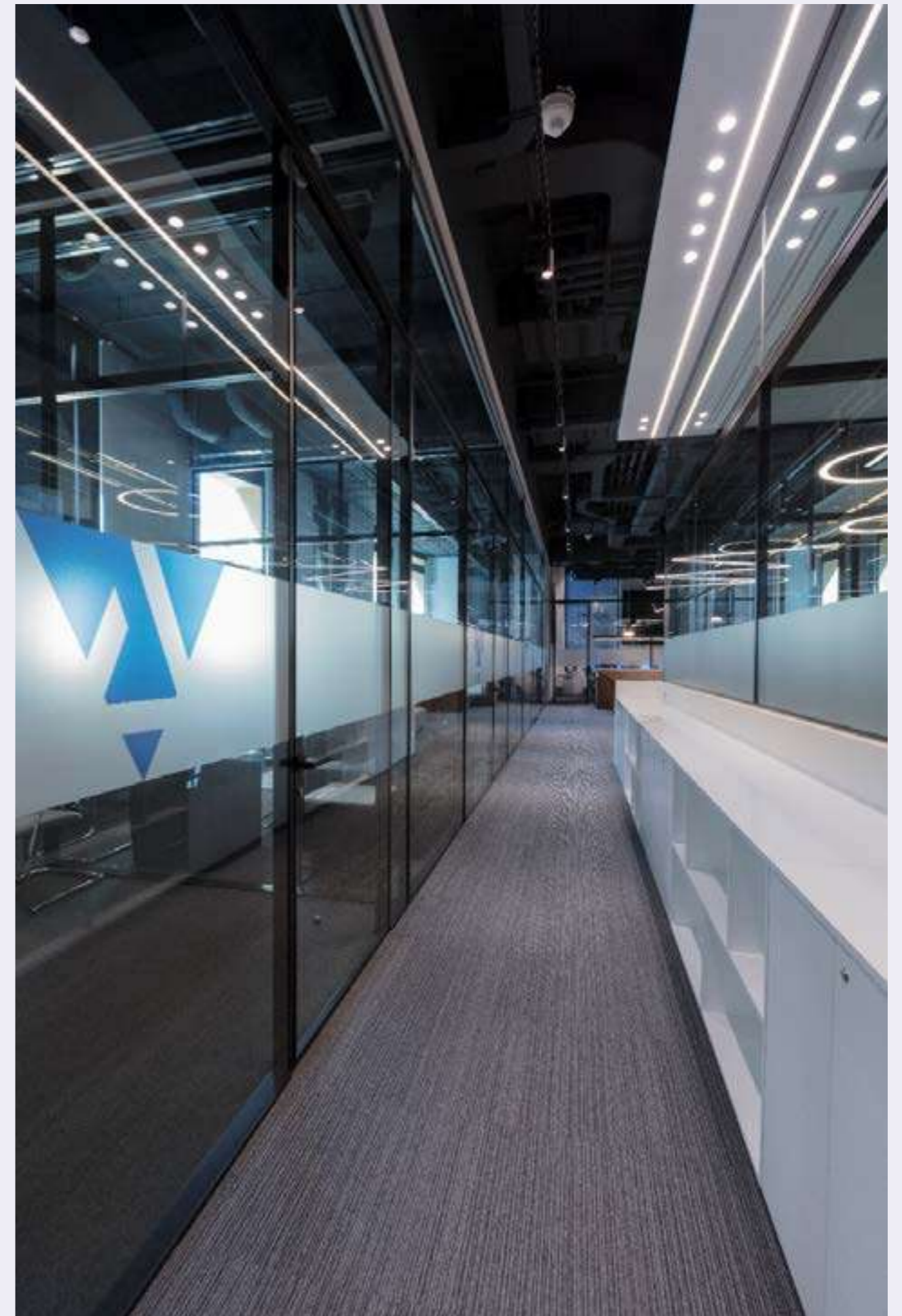
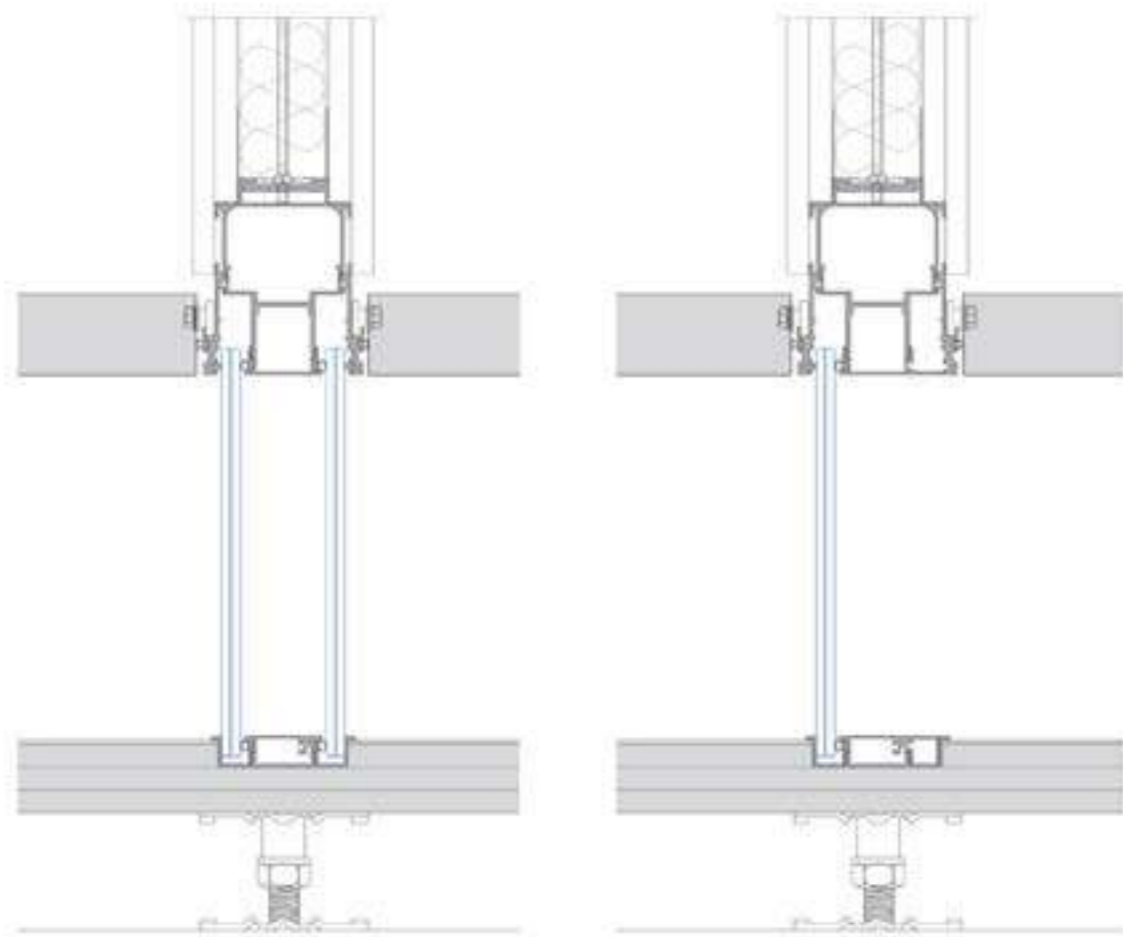
Complete state of the art, motorized shading solutions may also be provided upon request.



INTEGRATED SYSTEM DEMOUNTABLE GLASS PARTITIONS

The GX bandraster profile not only supports different ceiling types and finishes, lighting fixtures, sunscreens, acoustic baffles, etc... but also allows for the integration of both, single and/or dual glazed demountable partitions, sliding and pivot doors, in addition to various multiple light weight solid partitions; made of

wood or plasterboard, without compromising on the aesthetical aspects and acoustical performance of the system. The multi-functional ceiling profile, allows for an easy space re-configuration and design, whenever there is a need for change in spatial requirements.



2 WALLS & DOORS

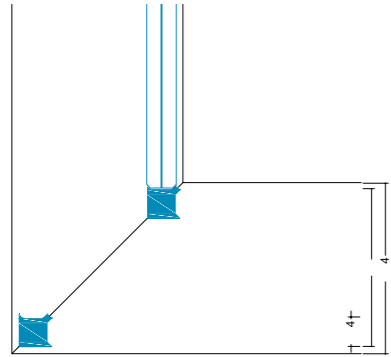
a. GLAZED WALLS

b. SOLID WALLS

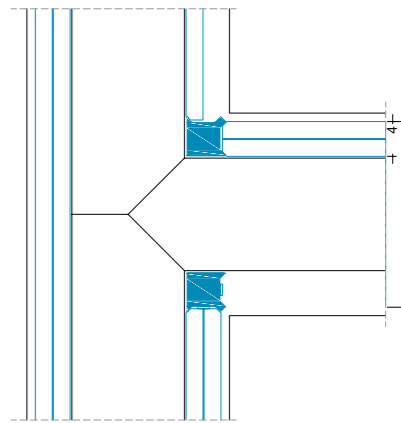
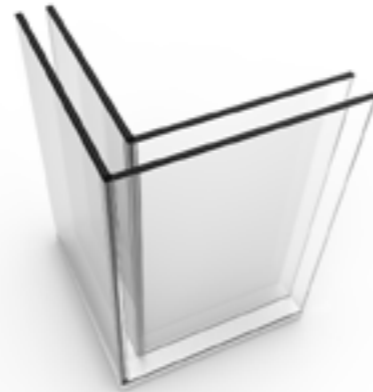


JOINTS

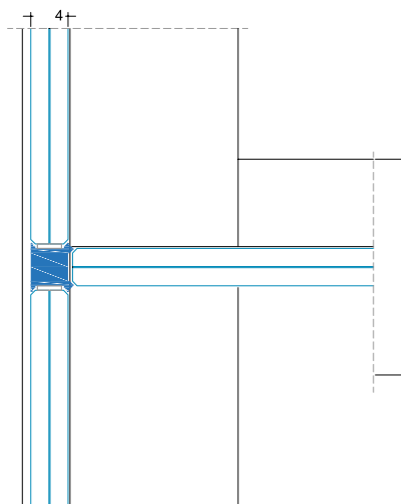
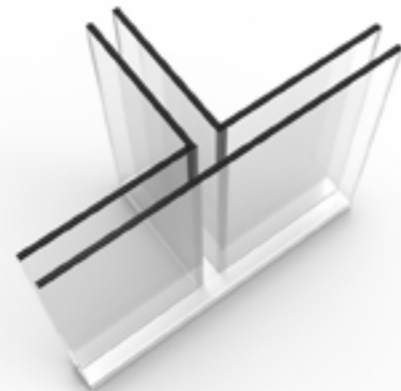
DEMOUNTABLE PARTITIONS



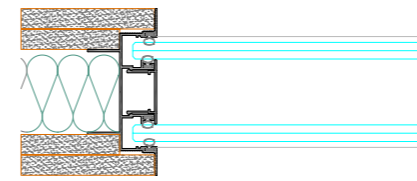
90 glass corner with polycarbonate joint



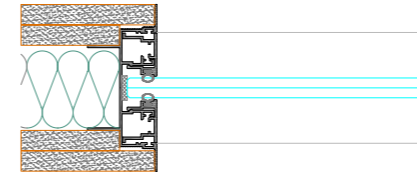
3 way glass with polycarbonate joint



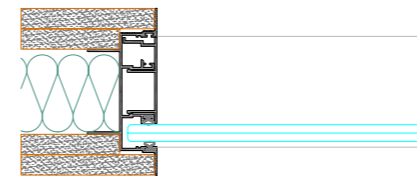
3 way single glass with polycarbonate joint



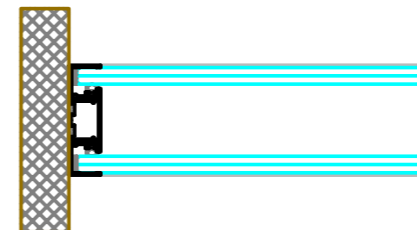
Seamless dual glass to solid wall connection



Seamless single middle glass to solid wall connection



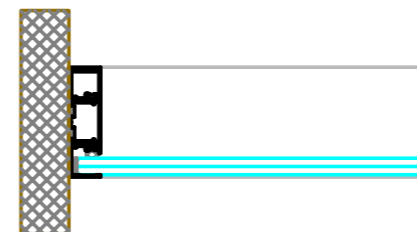
Seamless single offset glass to solid wall connection



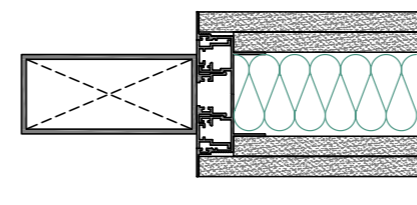
Exposed wall abutment for dual glass application



Exposed wall abutment for single middle glass application



Exposed wall abutment for single offset glass application



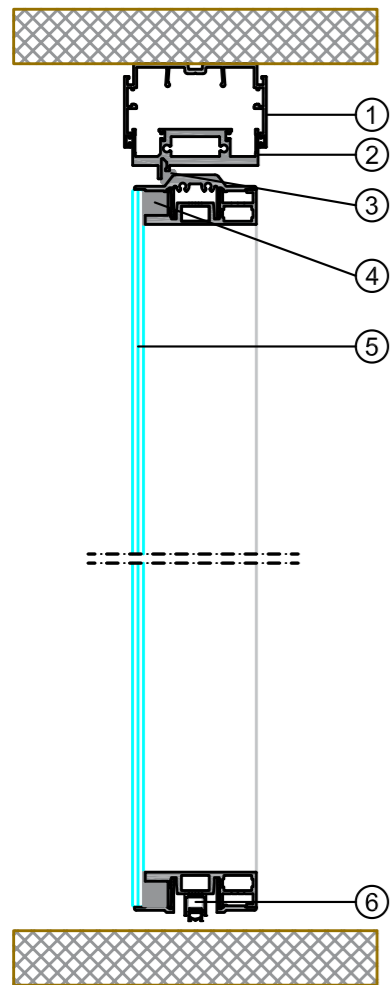
Seamless profile connection with aluminum mullion for solid wall application



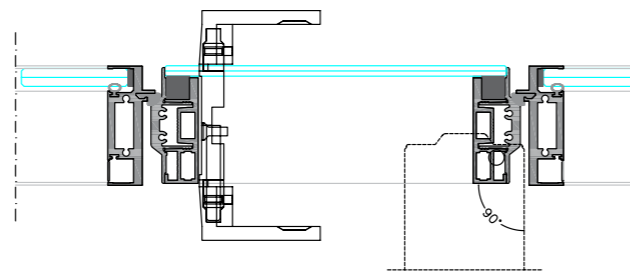
PIVOT SINGLE GLAZED DOOR

'Seamless' single glazed full height door, comprised of one single 8 mm thick clear tempered glass pane with perimeter back paint to match the color of the partition profile. The door is completely framed, fitted with an acoustic seal all around the sides and a drop seal at the bottom, providing a tight shut. The door also features an exclusive fully concealed hinge set.

The door comes with a standard single point manual lock and lever handle to the choice required. Additionally the door is designed to receive concealed overhead door closers and alternative hardware sets



1. Top profile
2. Door transom
3. Acoustic seal
4. Structural silicone
5. Single glass 8 mm
6. Acoustic drop sea

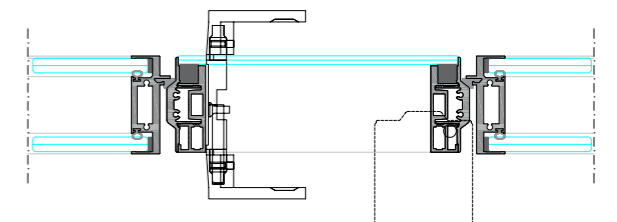
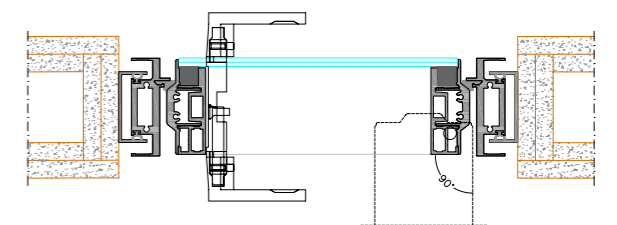
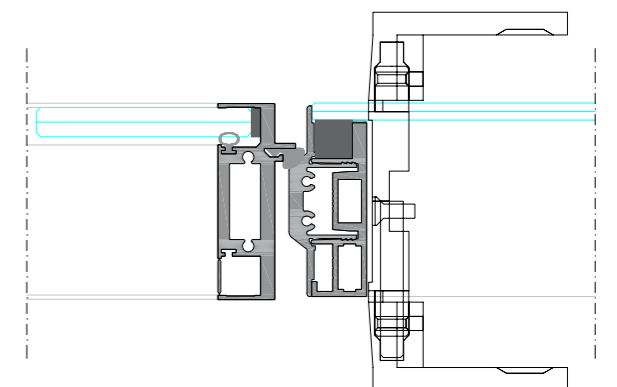
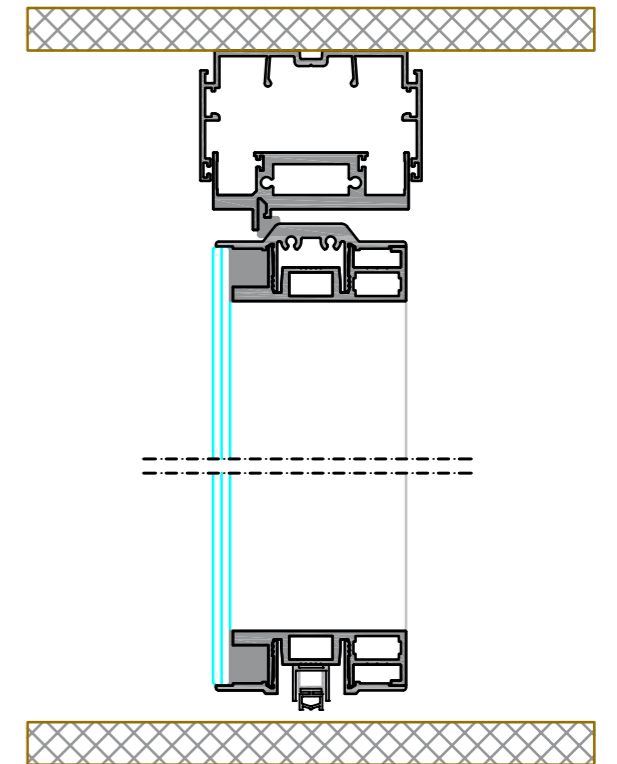


Offset tempered 8 mm thick flush bonded single glazed framed door

Concealed hinge design with acoustic drop seal

Flush finish with fixed glass sides

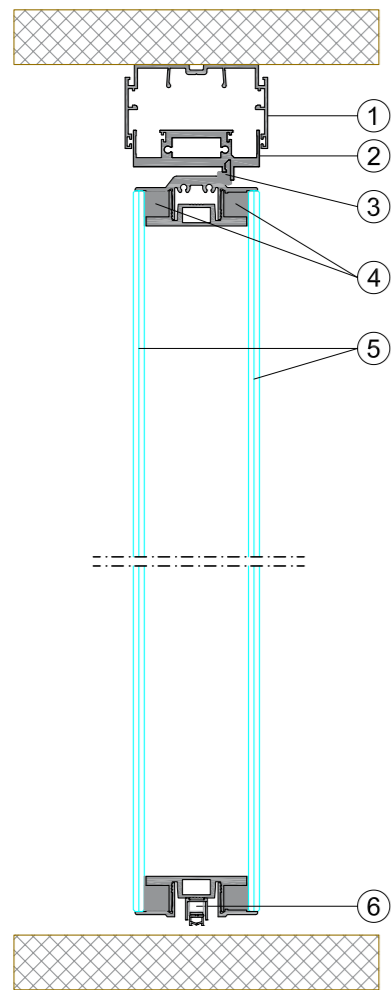
Compatibility with various design cases



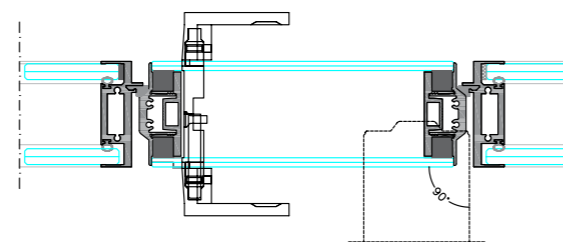
PIVOT DUAL GLAZED DOOR

'Seamless' dual glazed full height door, comprised of dual 8 mm thick clear tempered glass panes with perimeter back paint to match the color of the partition profile. The door is completely framed, fitted with an acoustic seal all around the sides and a drop seal at the bottom, providing a tight shut. The door also features an exclusive fully concealed hinge set.

The door comes with a standard single point manual lock and lever handle to the choice required. Additionally the door is designed to receive concealed overhead door closers and alternative hardware sets.



1. Top profile
2. Door transom
3. Acoustic seal
4. Structural silicone
5. Dual glass 8 mm
6. Acoustic drop seal

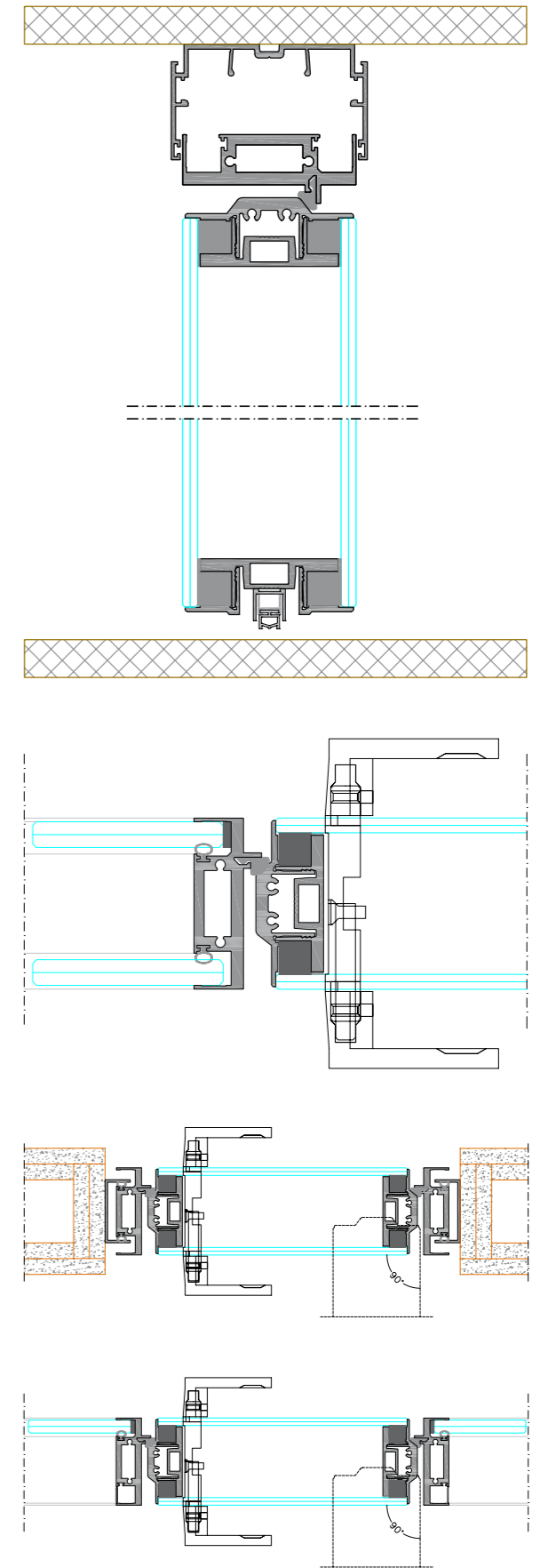


Dual glazed framed door with 8 mm thick tempered glass from both sides

Concealed hinge design with acoustic drop seal

Flush finish with fixed glass sides

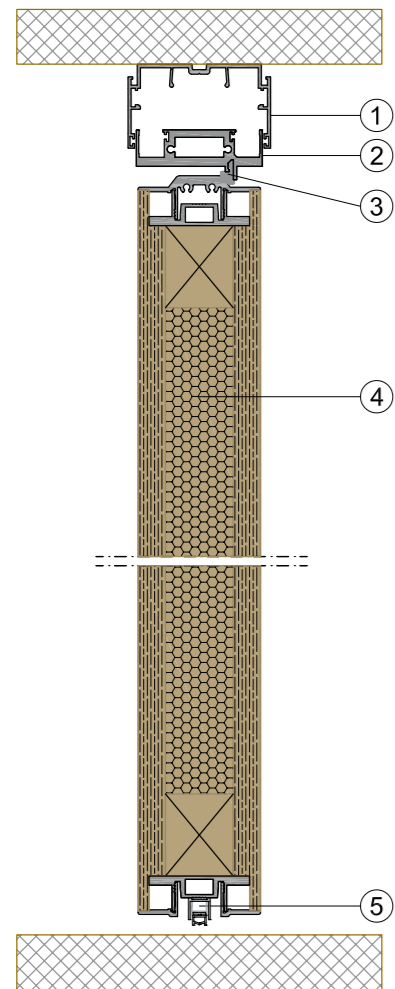
Compatibility with various design cases



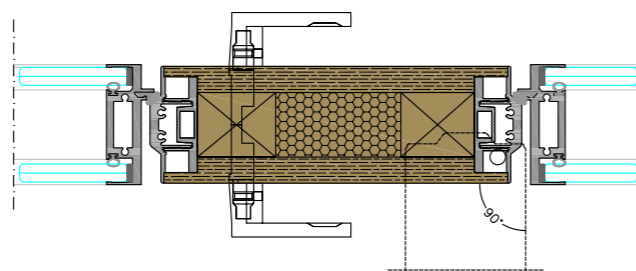
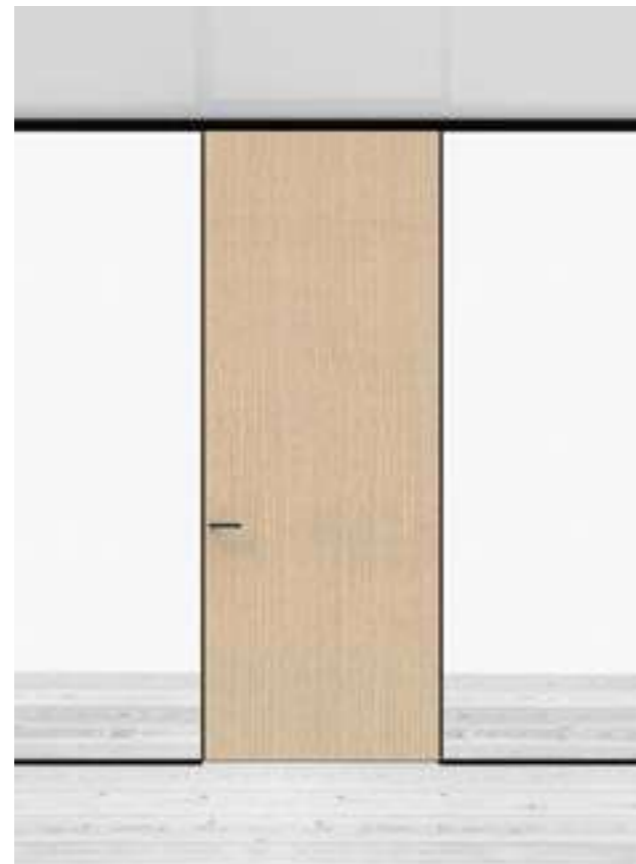
PIVOT SOLID DOOR 31

Seamless framed solid pivot door. The door leaf features a 69 mm thick solid core reinforced by an aluminum subframe. The design is consistent with the glass doors with the use of the same aluminum cover to form the lipping. The door leaf is offered in various finishes such as HPL, natural veneer and paint.

The door is fitted with an acoustic seal all around the sides and a drop seal at the bottom, providing a tight shut. The door comes with a standard single point manual lock and lever handle to the choice required. Additionally the door is designed to receive concealed overhead door closers and alternative hardware sets.



1. Top profile
2. Door transom
3. Acoustic seal
4. Solid wood core
5. Acoustic drop seal

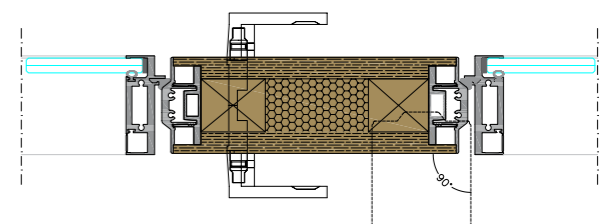
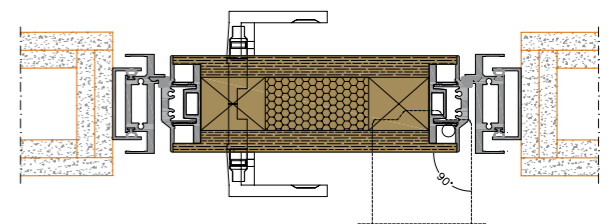
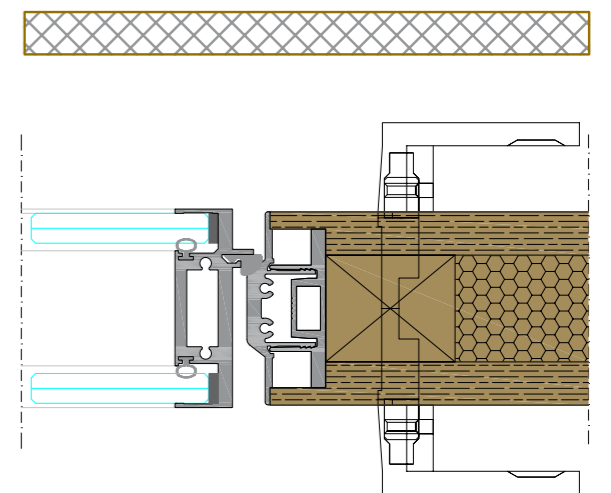
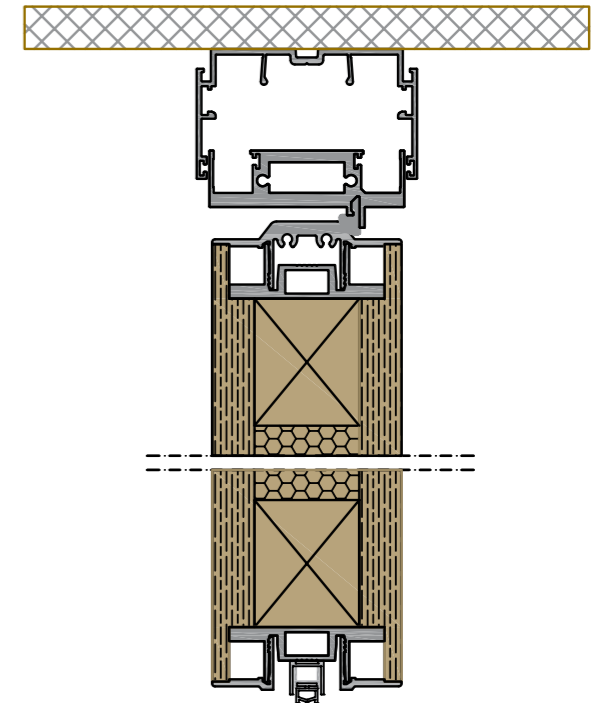


69 mm thick solid wood core offered in various finishes; HPL, natural wood veneer and polyurethane paint

Concealed hinge design with acoustic drop seal

Flush finish with fixed glass sides

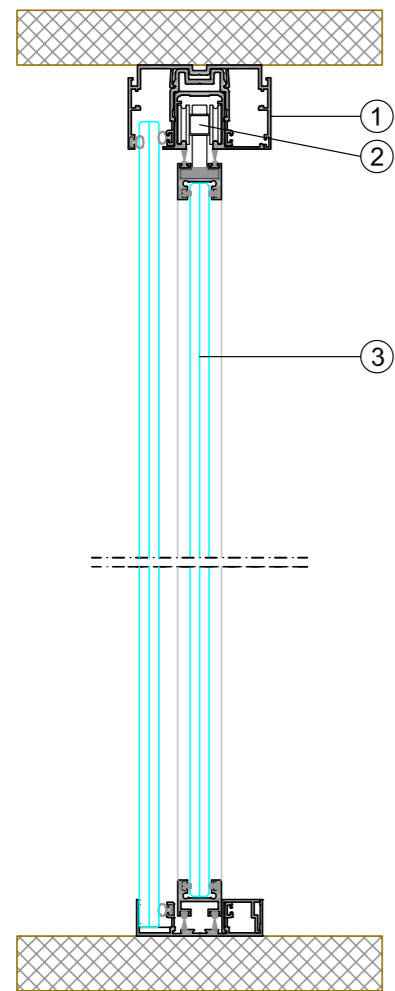
Compatibility with various design cases



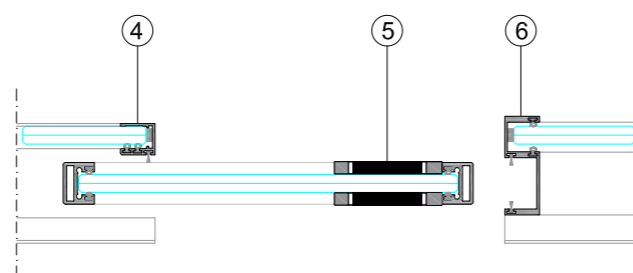
SINGLE GLAZED SLIDING DOOR

Full height minimal design framed single glazed sliding door made of 8mm thick clear tempered glass with exclusive recessed handle. The door comes with a wheel set with soft stop-close operation. The door may also be fitted with a hook lock if required.

The door is fitted with co-extruded sealing gasket on all sides and with brushes on both ends of the fixed vertical abutments to the fixed glass sides. When using the recessed floor profile, the door is fitted with a bottom polyamide fin.



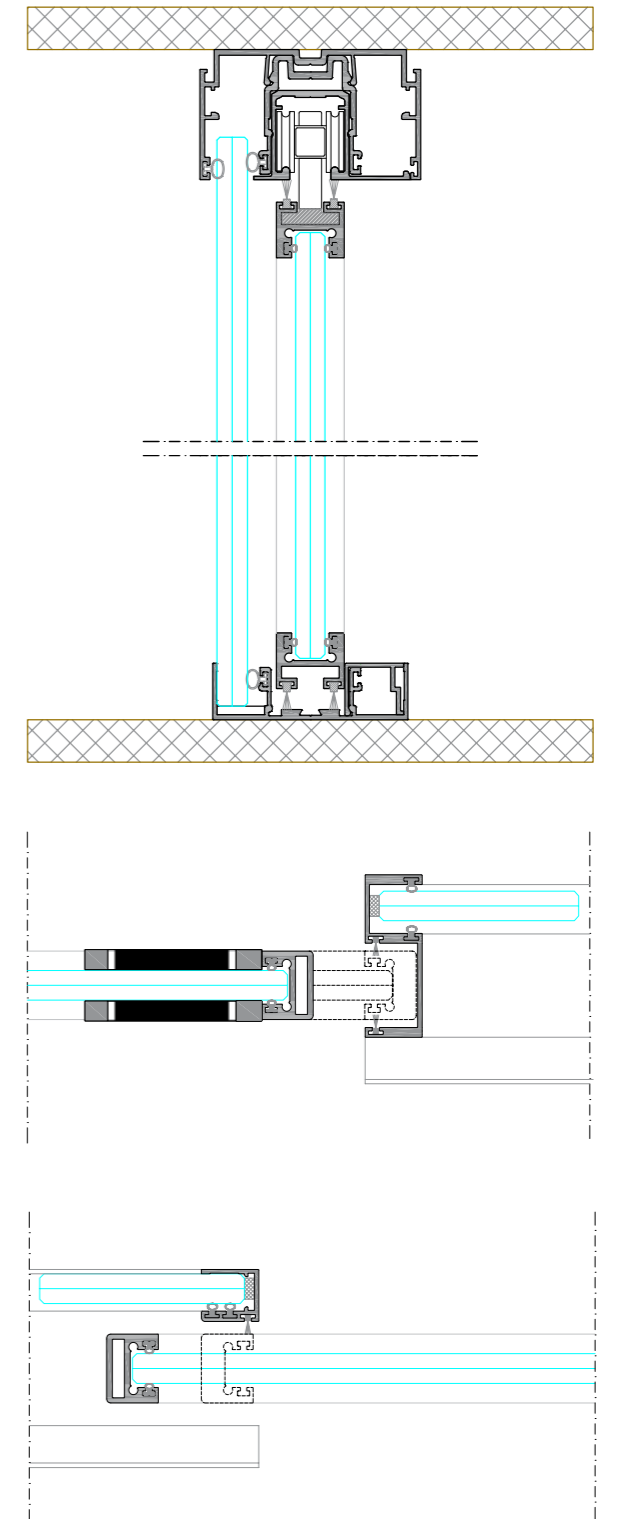
- 1. Top profile
- 2. Soft stop-close wheel set
- 8.3 mm thick glass
- 4. Cover profile to glass edge
- 5. Recessed handle
- 6. Receiving end vertical abutment for single glazed partitions



Framed single glazed sliding door made of 8 mm thick tempered glass equipped with soft stop-close mechanism

Framed abutment for single glass solution on the closing end
Recessed handle detail

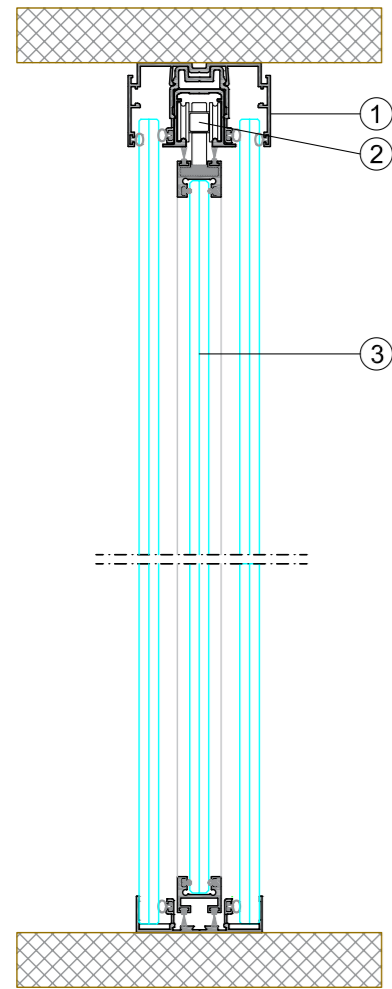
Vertical cover profile for fixed glass edge



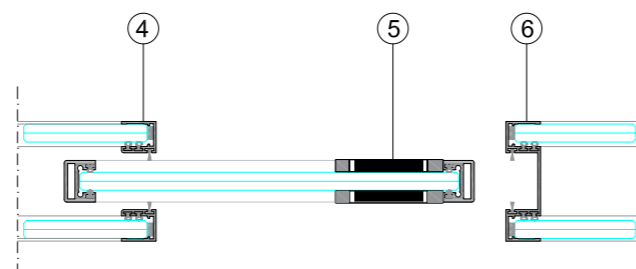
SINGLE GLAZED SLIDING DOOR

The same sliding door product is also available with accessories fit for used for dual glazed partitions. Similarly, the door comes with a wheel set with soft stop-close operation. The door may also be fitted with a hook lock if required.

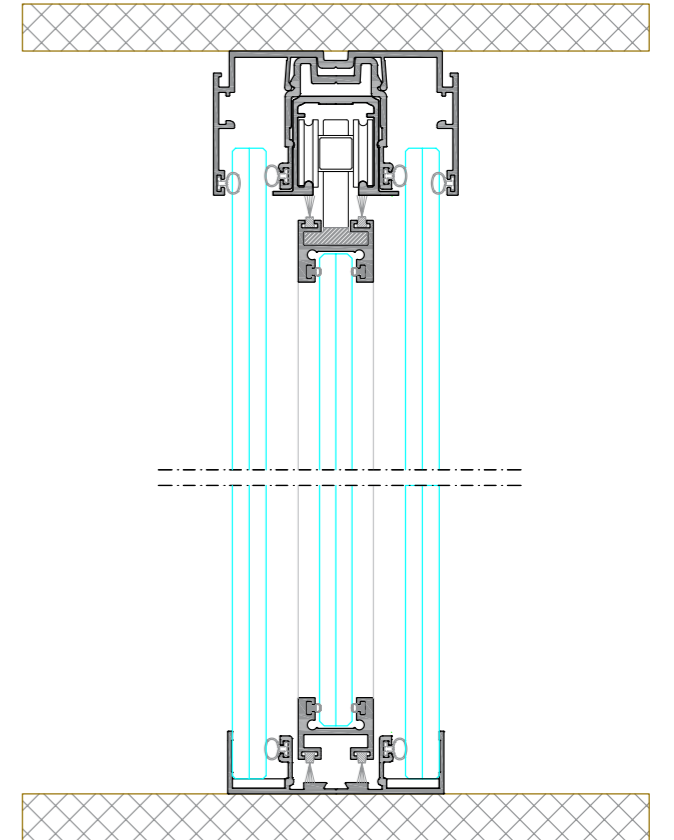
The door is fitted with co-extruded sealing gasket on all sides and with brushes on both ends of the fixed vertical abutments to the fixed glass sides. When using the recessed floor profile, the door is fitted with a bottom polyamide fin.



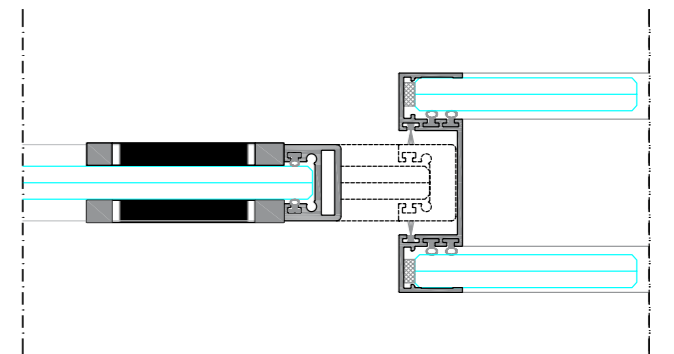
- 1. Top profile
- 2. Soft stop-close wheel set
- 8.3 mm thick glass
- 4. Double cover profiles to glass edges
- 5. Recessed handle
- 6. Receiving end vertical abutment for dual glazed partitions



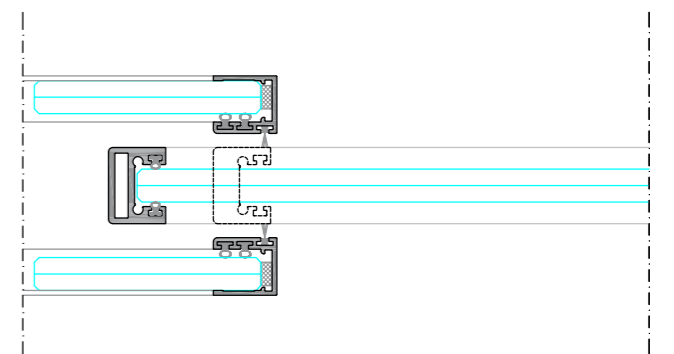
Framed single glazed sliding door made of 8 mm thick tempered glass, equipped with soft stop-close mechanism. Door slides between two glass panes.



Framed abutment for dual glass solution on the closing end. Recessed handle detail.



Double vertical cover profile for fixed glass edges.





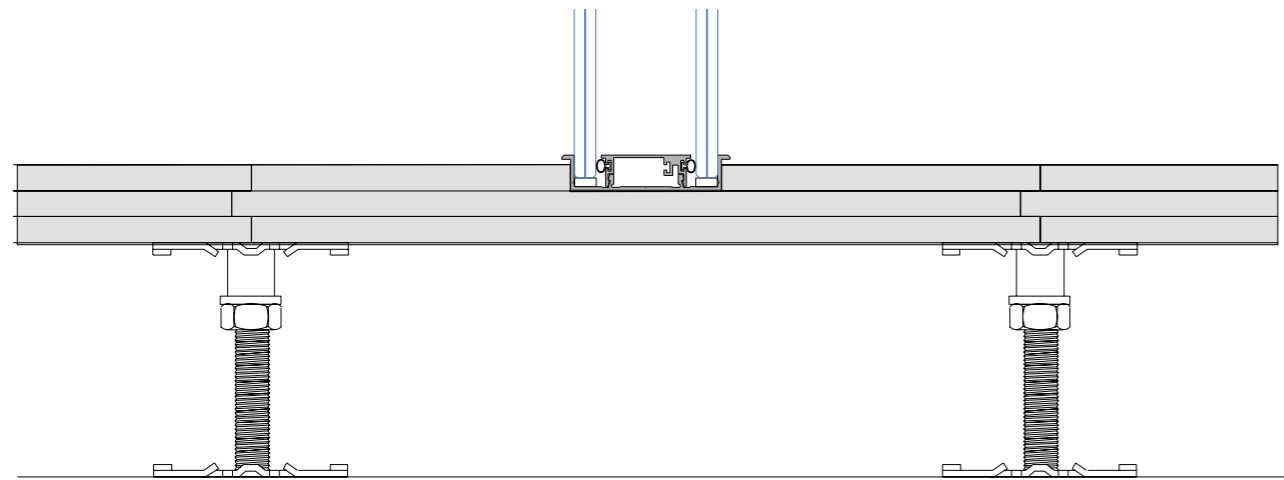
3 FLOOR
a. RAISED FLOOR
b. REVISION LANES & PANELS

RAISED FLOOR

The integrated raised flooring system is made of compressed gypsum fiberboard panels, formed of three layers to allow for the recess installation of the floor profile.

The tongue and groove panels come in standard size of 500x1000 mm and a total thickness of 39 mm with a wide range of height adjustable steel pedestals.

The technical floor is a practical and alternative solution to traditional substrates, while panels are glued together to form; a sturdy elevated floor that reduces foot fall noise levels and the basis for various floor coverings such as wood parquet, carpet, vinyl, natural stone and ceramic tiles.



REVISION LANES & PANELS

Inspection and reconfiguration of wiring resulting from changes in furniture layout, can be achieved by demounting the revision lane panels to allow access to the crawlspace beneath the fixed elevated flooring system.

