

**F65**

*ALEA*

**Free-standing wall/office solution**

walls > ceiling > lighting > accessories > air treatment



4x4

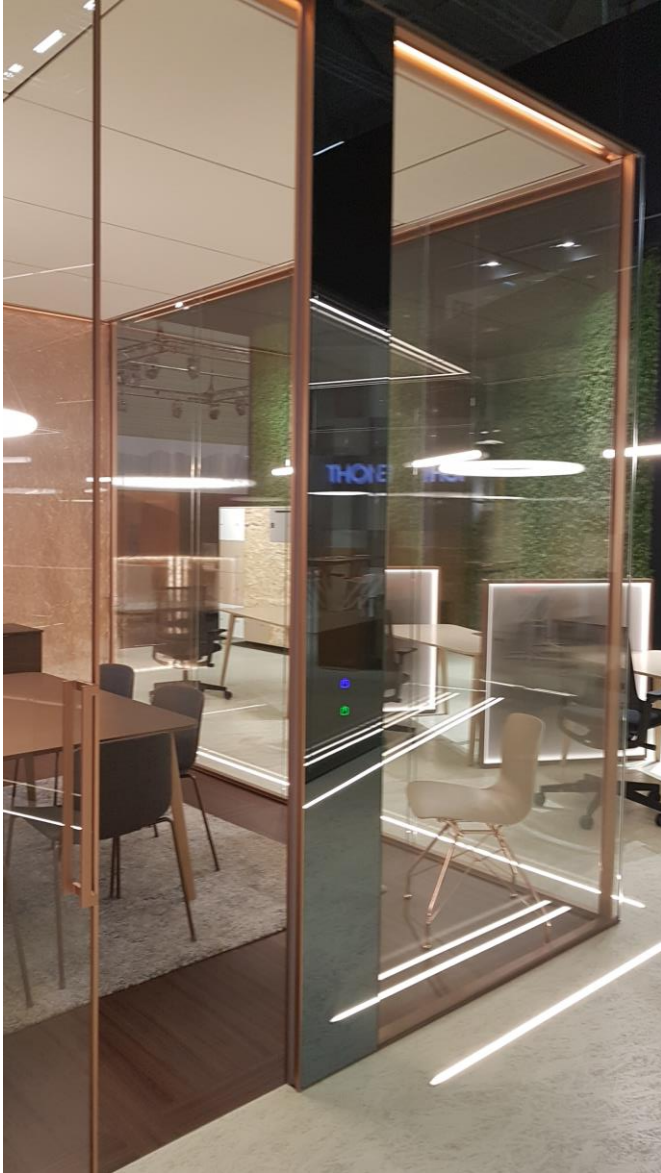


4x4



10x4





## DETAILS

Soft-touch control panel





## DETAILS

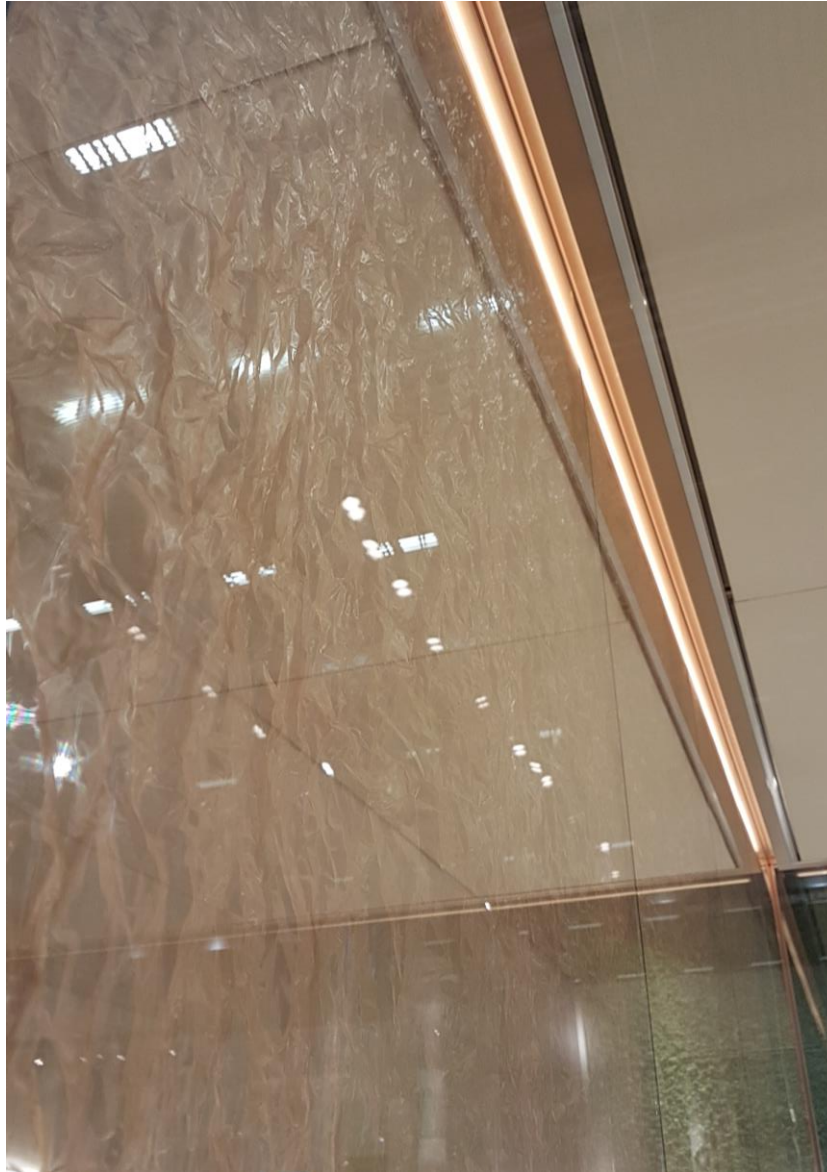
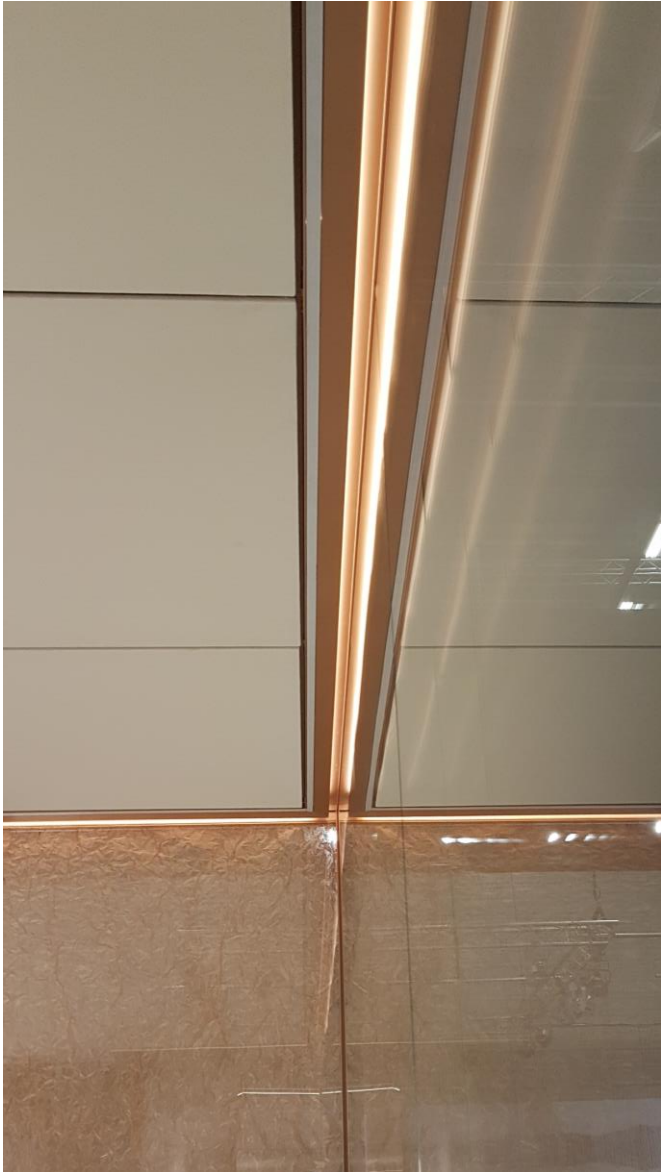
matal fabric curtains

3D effect









## DETAILS

LED lighting  
Integrated – 2 rows

1. direct dimmable
2. indirect for comfort



## DETAILS

air treatment uit  
air conditioning  
filtration



## DETAILS

acoustic ceiling

aluminium framed fabric

## DETAILS

acoustic ceiling





## DETAILS

acoustic wall panel



## DETAILS

working wall

floating

embedded

ready for shelving

white board

integrated monitor









## DETAILS

integrated monitor

conductive transparent glass

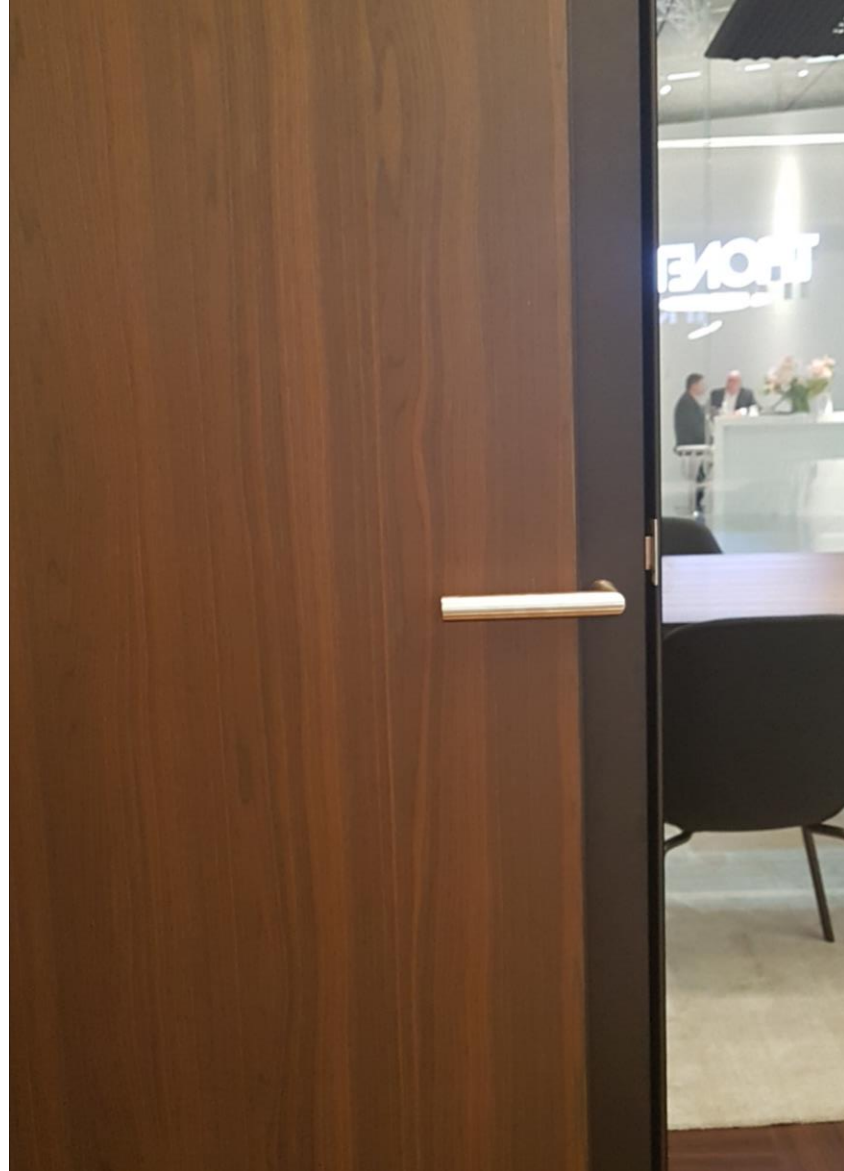


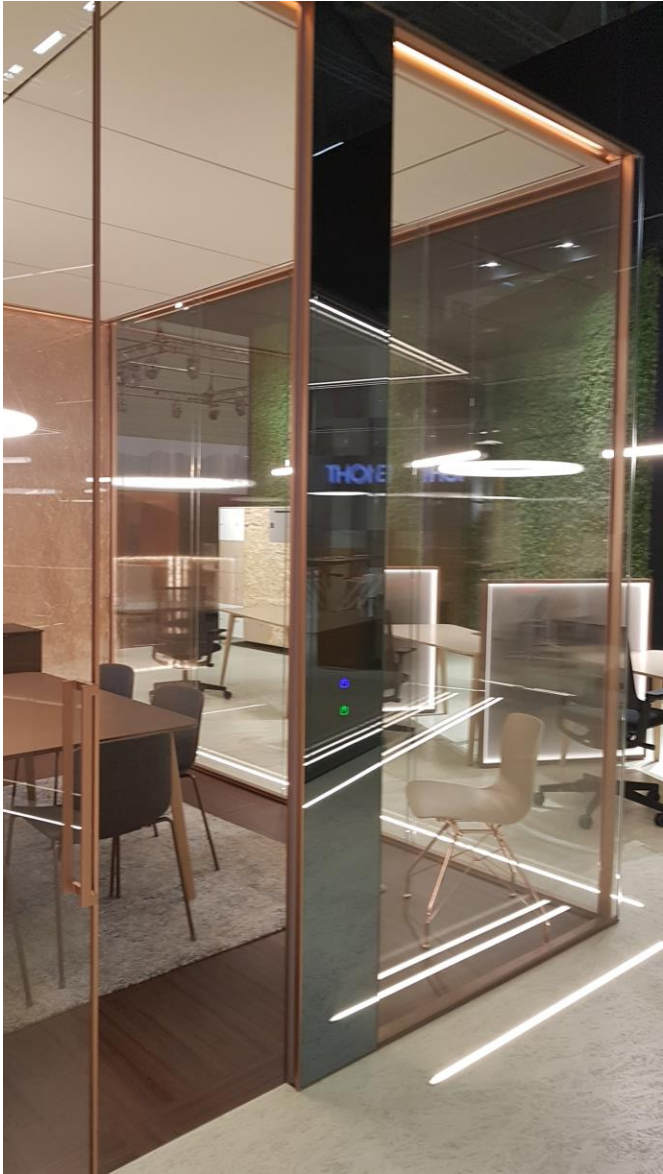




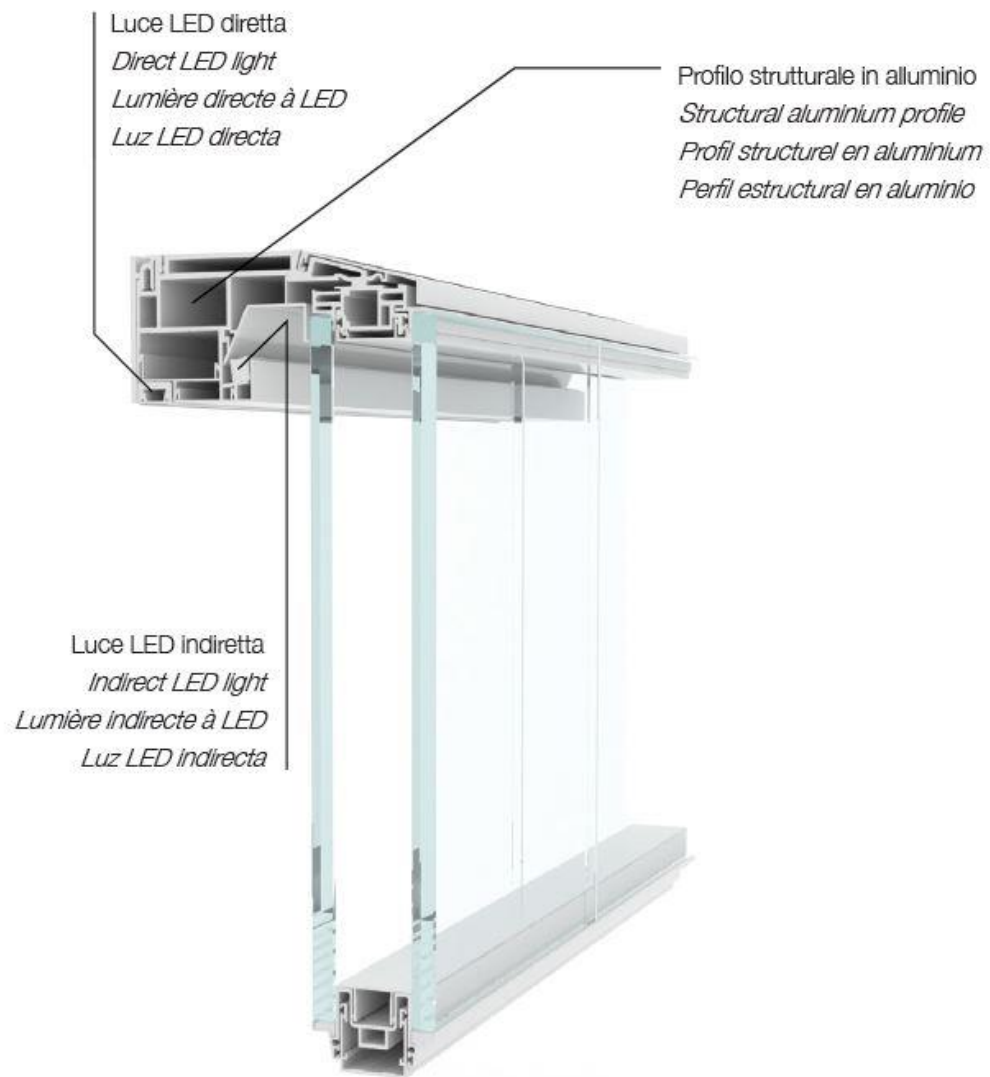
## DETAILS

Doors





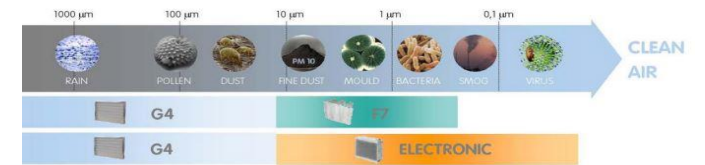
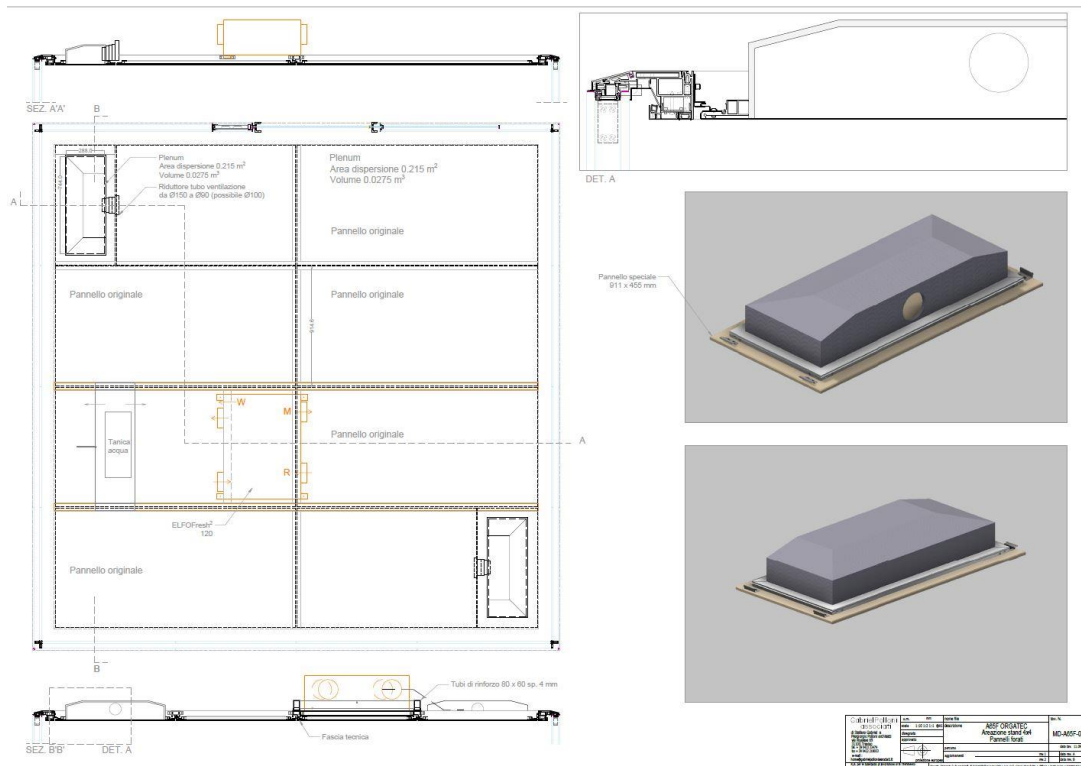




# AIR CONDITIONING UNIT



- positioned on top of the ceiling on dedicated framing
- compact dimension 800x690x266 mm
- sized for 'a-box' up to 8 people environment
  - noise level only 38 db
  - cooling (approx 3000 btu)
  - heating (approx 3000 btu)
- dehumidification (pre-set parameter)
- advanced drainage system with built-in vaporizer
- electronic filtration (use electrically charged filters to reduce the number of airborne contaminants)



Thank you



**Communication et marketing division**

**ALEA**