



The Gallery Collection Roller Shade Fabrics

Available For:
Sivoia QED®
Sivoia® QS
Sivoia® QS Wireless



The Gallery Collection by Lutron®

“Style is the perfection of a point of view.”

Richard Eberhart

Style Meets Technology

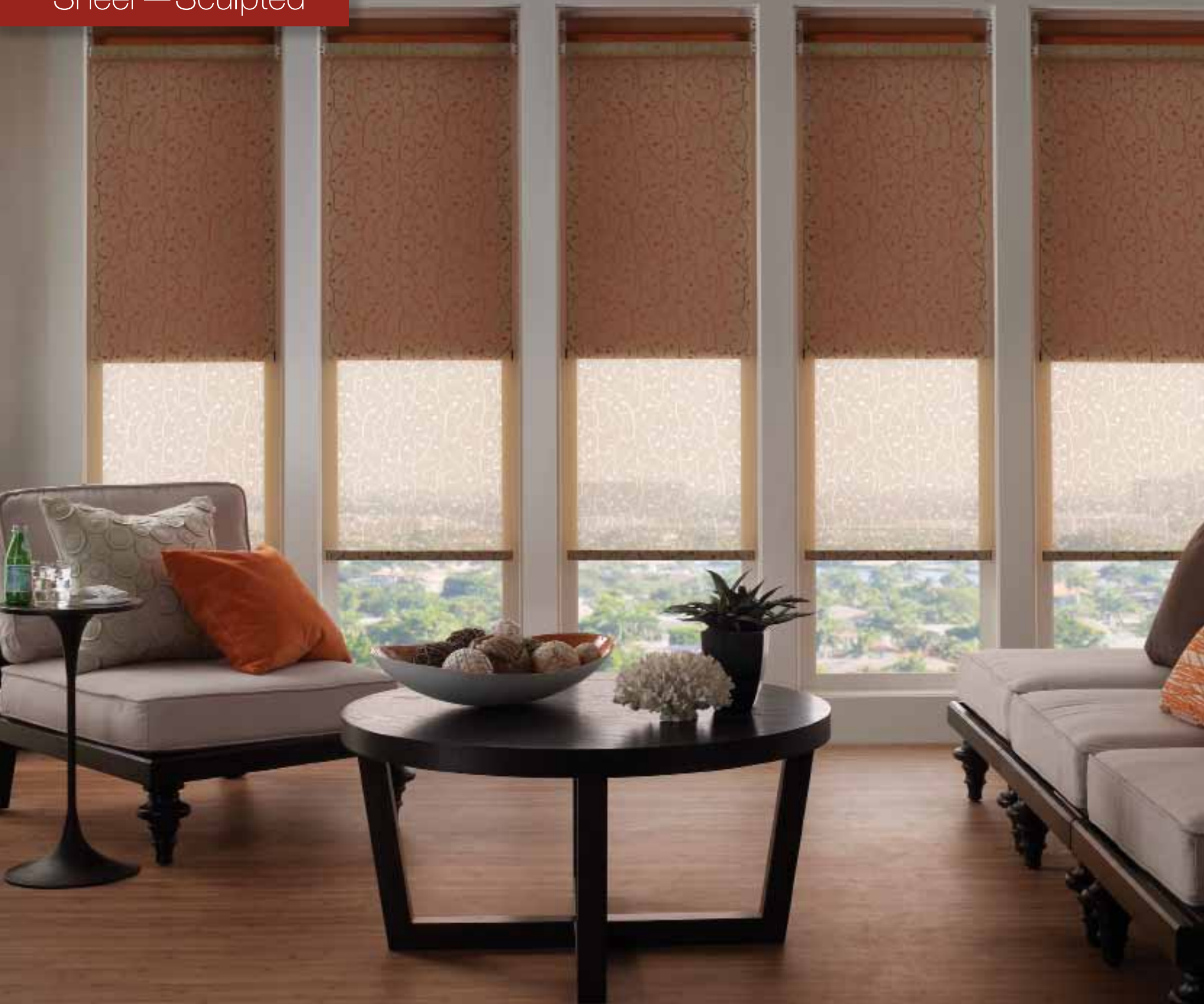
The Gallery Collection designer fabric line combines style with precision control of daylight. It includes a range of color, texture, and pattern to accent any décor.

These fabrics within the sheer and dim-out categories, include shimmering metallics and ultra-suede neutrals. Enjoy the performance of Lutron shades with the beauty of The Gallery Collection. Relax knowing that this collection contains sustainable fabric options.

Reflect your lifestyle and control daylight with shades that are a work of art.

Front cover:
Roller 20™ Sivoia® QS Wireless dual shades
Left: **Nest - White** and **Singing in the Rain - Plum**
Center: **Boxstitch - New Wave** and **Basketweave - White**
Right: **Kago - Silver** and **Singing in the Rain - Indigo**

Sheer—Sculpted



Add mystery and drama with sculpted sheers that both obscure and reveal.

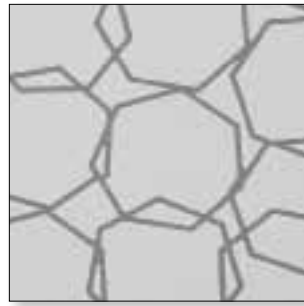
Fiber-etching removes part of the fabric to create the design. Select from a collection of patterns that range from whimsical to geometric.

Each sculpted sheer diffuses light in a distinctive way.

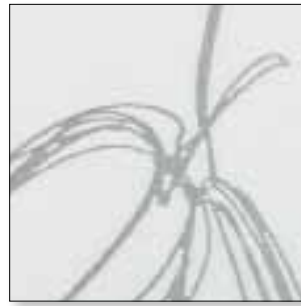


Snow Drops - Beige (wrapped bronze bottom bar)
with dim-out fabric Singing in the Rain - Pumpkin

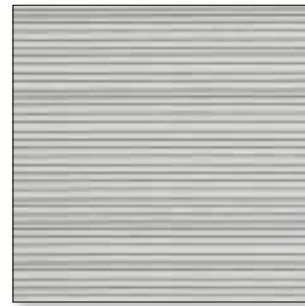
Sheer—Sculpted



Vector R - White
BO-VEC-WH
- PVC-Free
- Oeko-Tex® Standard
100 Certified



Thin Line Floral - White
BO-TLF-WH
- PVC-Free



Fine Line - White
BO-FL-WH
- PVC-Free
- Oeko-Tex® Standard
100 Certified



Fine Line - Ivory
BO-FL-IV
- PVC-Free
- Oeko-Tex® Standard
100 Certified



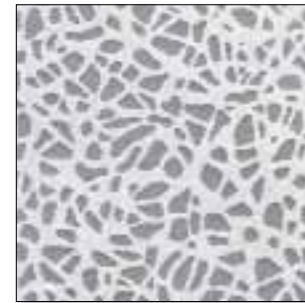
Fine Line - Black
BO-FL-BL
- PVC-Free
- Oeko-Tex® Standard
100 Certified



Bali - White
BO-BAL-WH



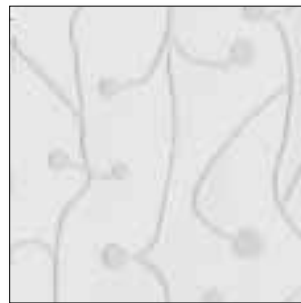
Bali - Black
BO-BAL-BL



Nest - White
BO-NST-WH
- PVC-Free



Nest - Beige
BO-NST-BE
- PVC-Free



Snow Drops - Ivory
BO-SWD-IV
- PVC-Free



Snow Drops - Beige
BO-SWD-BE
- PVC-Free

Fabric	Usable Roll Width	Composition	Stocking Category	Openness Factor (%)
Vector R	76 in (1930 mm)	100% Trevira CS	Premium	6
Thin Line Floral	77 in (1956 mm)	55% Polyester, 45% Viscose	Premium	3
Fine Line	156 in (3963 mm)	100% Polyester	Premium	>20
Bali	84 in (2134 mm)	100% Polyester	Premium	6 WH, 4 BL
Nest	77 in (1956 mm)	73% Cotton, 27% Polyester	Premium	>25
Snow Drops	77 in (1956 mm)	73% Cotton, 27% Polyester	Premium	>15

Refer to page 22 for all fabric rules.

Refer to page 23 for information about stocking categories.

Sheer—Texture



Create warmth with texture.

Whether simple or complex weaves, these fabrics lend an air of sophistication to your environment. Choose from rich grains or from neutral hues to complement your space.



Bali - Linen
(wrapped bronze bottom bar)

Sheer—Texture



Scratch - White
T-SCR-WH
- PVC-Free
- Oeko-Tex® Standard
100 Certified



Scratch - Beige
T-SCR-BE
- PVC-Free
- Oeko-Tex® Standard
100 Certified



Crosshatch - White
T-CHT-WH
- PVC-Free
- Oeko-Tex® Standard
100 Certified



Crosshatch - Natural
T-CHT-NT
- PVC-Free
- Oeko-Tex® Standard
100 Certified



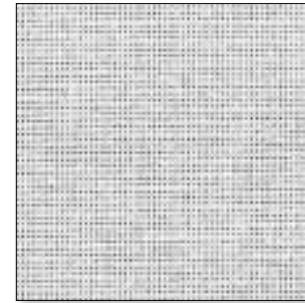
Bali - Linen
T-BAL-LN



Light Linen - Natural
T-LLN-NL
- PVC-Free



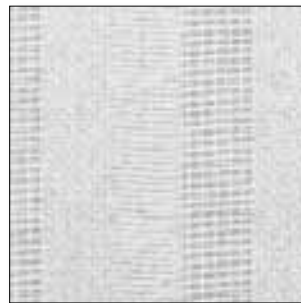
Plain Linen - Dark
T-PLN-DL
- PVC-Free



Basketweave - White
T-BKW-WH
- PVC-Free



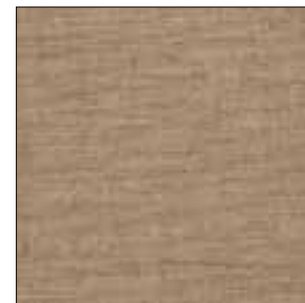
Basketweave - Linen
T-BKW-LN
- PVC-Free



3 Weaves - White
T-3WV-WH
- PVC-Free



3 Weaves - Linen
T-3WV-LN
- PVC-Free



Burlap - Brown*
T-BUR-BR
- PVC-Free

Fabric	Usable Roll Width	Composition	Stocking Category	Openness Factor (%)
Scratch	77 in (1956 mm)	100% Polyester	Premium	20 WH, 1 BE
Crosshatch	50 in (1270 mm)*	100% Polyester	Premium	9 WH, 1 NT
Bali	84 in (2134 mm)	94% Polyester, 6% Flax	Premium	5
Light Linen	77 in (1956 mm)	94% Polyester, 6% Flax	Premium	1
Plain Linen	77 in (1956 mm)	60% Cotton, 40% Flax	Premium	3
Basketweave	85 in (2159 mm)	90% Cotton, 10% Flax	Premium	9 WH, >10 LN
3 Weaves	77 in (1956 mm)	90% Cotton, 10% Flax	Premium	6
Burlap	50 in (1270 mm)*	100% Polyester	Premium	9

Refer to page 22 for all fabric rules.

Refer to page 23 for information about stocking categories.

* Temporary restriction

Sheer—Metallic



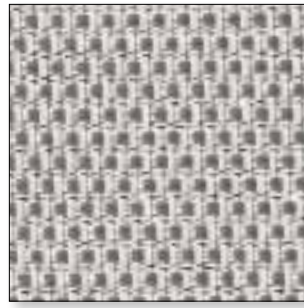
Coordinate finishes in a room with woven metallic accents.

These luminescent sheers offer a contemporary look and diffuse light with a hint of shimmer.

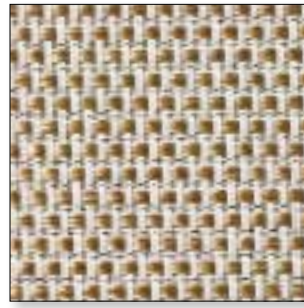


Sugi - Silver
(exposed anodized aluminum bottom bar)

Sheer—Metallic



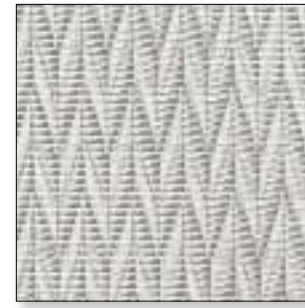
Kago - Silver
M-KAGO-SLV



Kago - Gold
M-KAGO-GD



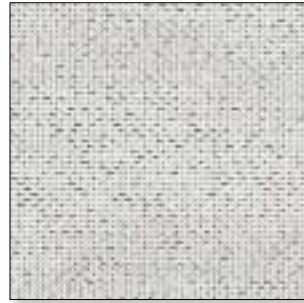
Kago - Copper
M-KAGO-CPP



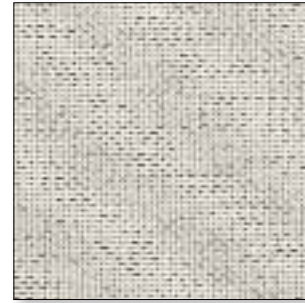
Sugi - Silver
M-SUGI-SLV



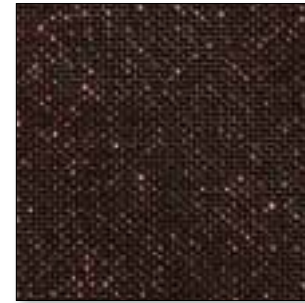
Sugi - Gold
M-SUGI-GD



Plains - Winter Ice
M-PLN-SLV



Plains - Golden Dawn
M-PLN-GD



Plains - Copper Twilight
M-PLN-CPP

Fabric	Usable Roll Width	Composition	Stocking Category	Openness Factor (%)
Kago	70 in (1829 mm)	25% polyester, 73% vinyl, 2% nylon	Premium	12
Sugi	70 in (1829 mm)	24% polyester, 76% vinyl	Premium	7
Plains	70 in (1829 mm)	25% polyester, 72% vinyl, 3% nylon	Premium	7

Refer to page 22 for all fabric rules.

Refer to page 23 for information about stocking categories.



Dim-Out—Translucent



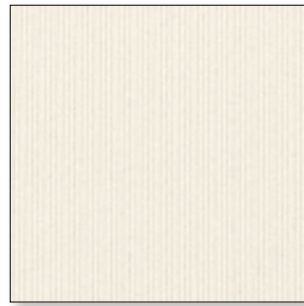
Showcase the interplay of light and shadow with a translucent fabric, providing moderate light control with privacy.

Select from a saturated palette of fabrics with recycled content to make a bold statement in any room.

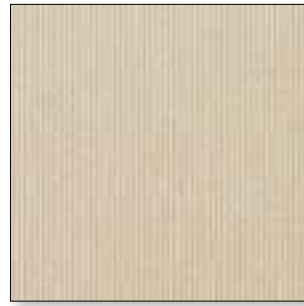


Boxstitch - Hot Red
(wrapped bottom bar)

Dim-Out—Translucent



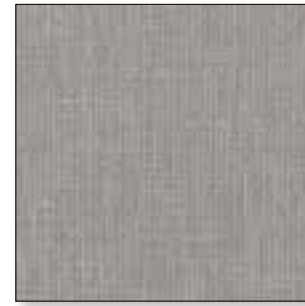
Singing in the Rain
White
P-101-WH
- PVC-Free
- 100% Recycled



Singing in the Rain
Flax Seed
P-103-FS
- PVC-Free
- 100% Recycled



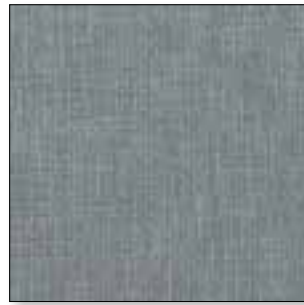
Singing in the Rain
Khaki
P-105-KK
- PVC-Free
- 100% Recycled



Singing in the Rain
Nickel
P-802-NK
- PVC-Free
- 100% Recycled



Singing in the Rain
Moss
P-503-MO
- PVC-Free
- 100% Recycled



Singing in the Rain
Dusk
P-401-DK
- PVC-Free
- 100% Recycled



Singing in the Rain
Port
P-301-PT
- PVC-Free
- 100% Recycled



Singing in the Rain
Pumpkin
P-701-PP
- PVC-Free
- 100% Recycled



Singing in the Rain
Indigo
P-402-IG
- PVC-Free
- 100% Recycled



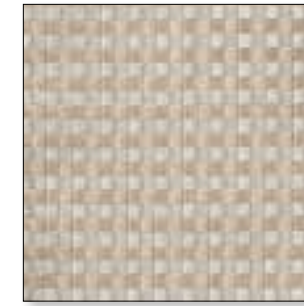
Singing in the Rain
Raisin
P-601-RN
- PVC-Free
- 100% Recycled



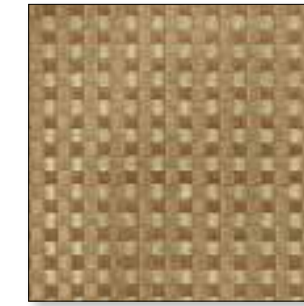
Singing in the Rain
Mocha
P-104-MC
- PVC-Free
- 100% Recycled



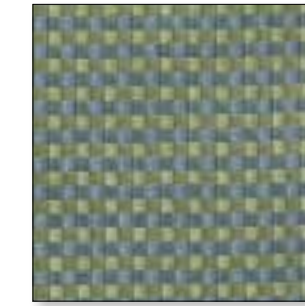
Singing in the Rain
Charcoal
P-804-CH
- PVC-Free
- 100% Recycled



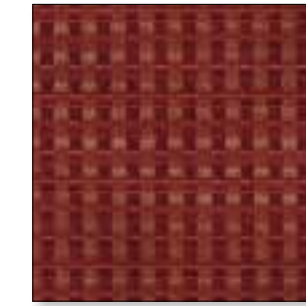
Boxstitch - Cane
TR-BXST-CN
- PVC-Free
- 96% Recycled



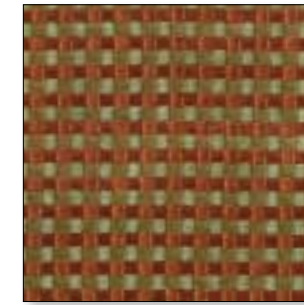
Boxstitch - Tea Bag
TR-BXST-TB
- PVC-Free
- 96% Recycled



Boxstitch - New Wave
TR-BXST-NW
- PVC-Free
- 96% Recycled



Boxstitch - Hot Red
TR-BXST-HR
- PVC-Free
- 96% Recycled



Boxstitch - Curry
TR-BXST-CU
- PVC-Free
- 96% Recycled

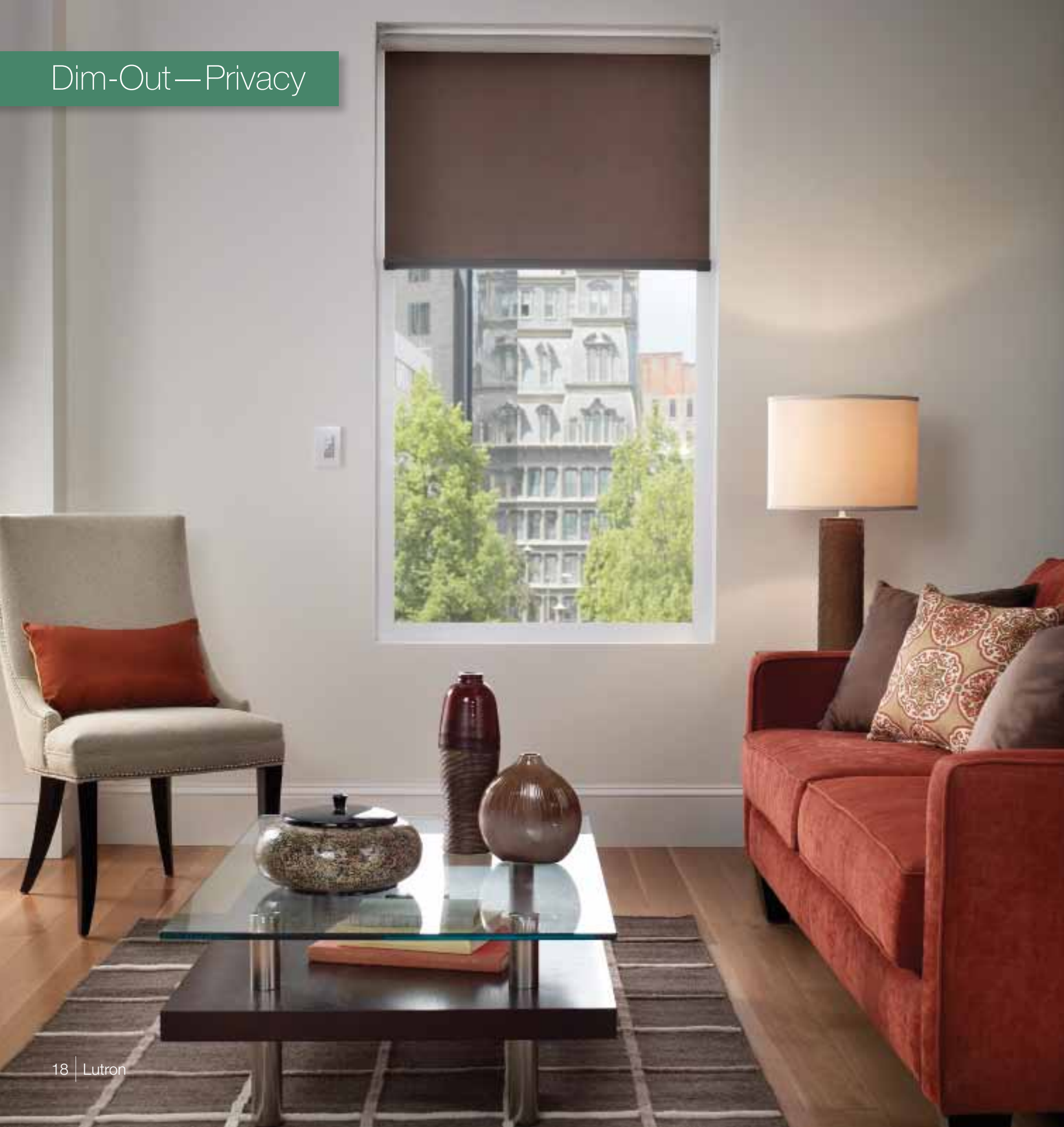


Boxstitch - Mohegan
TR-BXST-MG
- PVC-Free
- 96% Recycled

Fabric	Usable Roll Width	Composition	Stocking Category	Openness Factor (%)
Singing in the Rain	68 in (1727 mm)	100% Recycled Polyester	Custom	<2
Boxstitch	70 in (1829 mm)	72% recycled polyester 24% post-consumer recycled polyester 4% flame retardant polyester	Custom	1

Refer to page 22 for all fabric rules.
Refer to page 23 for information about stocking categories.

Dim-Out—Privacy



Create privacy and block light with an ultra-suede.
The neutral palette coordinates with any space,
while adding elegance.



Montana - Saddle
(exposed bronze bottom bar)

Dim-Out—Privacy



Montana - Prairie
P-PRA
- PVC-Free



Montana - Moccasin
P-MOC
- PVC-Free



Montana - Buffalo
P-BUF
- PVC-Free

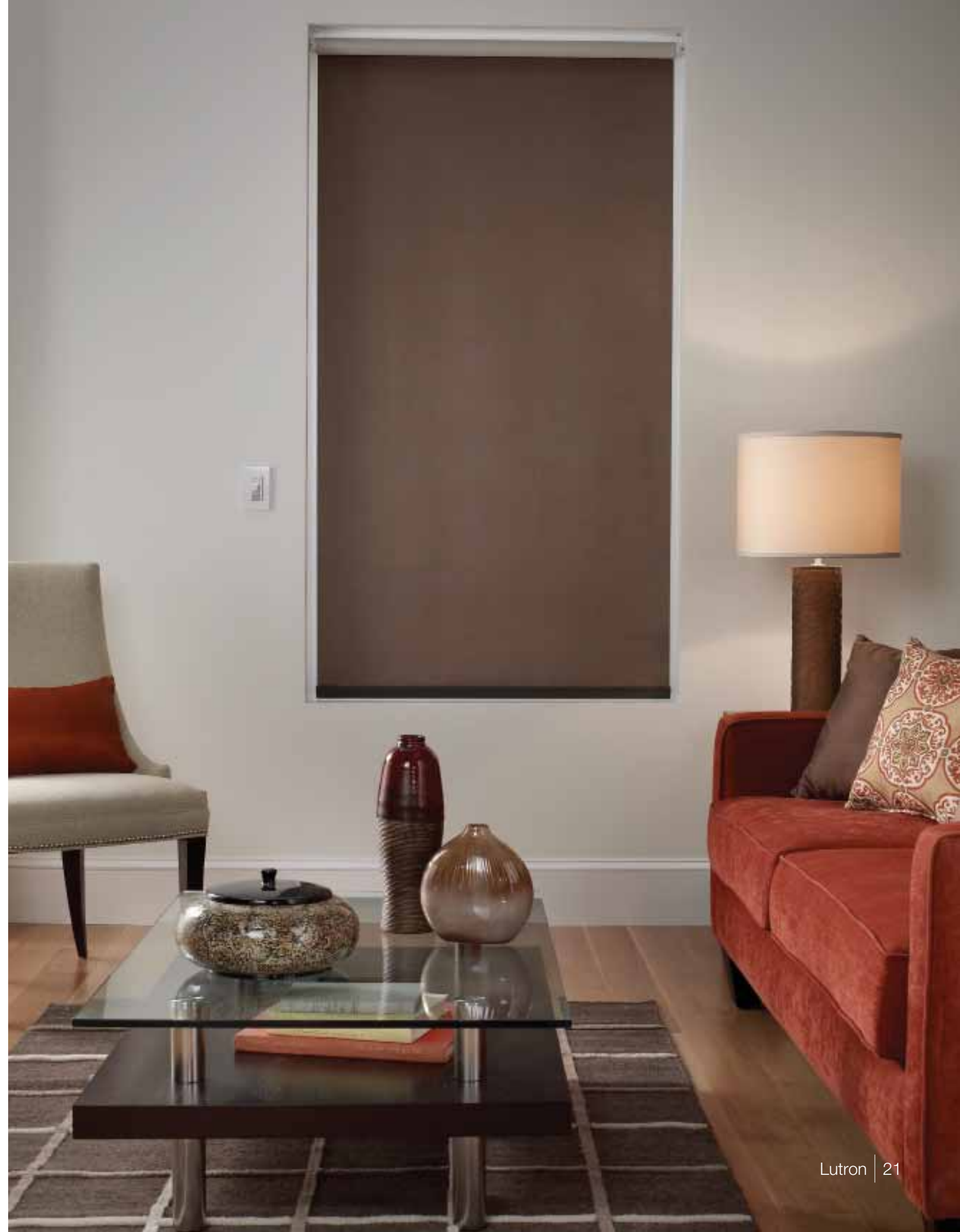


Montana - Saddle
P-SAD
- PVC-Free

Fabric	Usable Roll Width	Composition	Stocking Category	Openness Factor (%)
Montana	86 in (2184 mm)	100% Polyester	Premium	<1

Refer to page 22 for all fabric rules.

Refer to page 23 for information about stocking categories.



Fabric Rules

Maximum heights/widths

Fabric maximum height and width limits are 156 in. (3962 mm) with the exception of Singing in the Rain, which has maximum limits of 120 in. (3048 mm), and Fine Line, which has maximum limits of 77 in. (1956 mm) high.

Bottom bar options

This collection can only use architectural bottom bars. Architectural bottom bars are available as exposed (pgs 10, 18 and 21) or wrapped (pgs 2, 6, and 14). Bottom bar colors: White, Black, Anodized Aluminum, and Bronze.

Solar properties

A complete listing of solar performance metrics is available at www.lutron.com/fabrics

Fire ratings

Basketweave, Boxstitch, Kago, Montana, Plains, Sugi and Vector R fabrics are fire retardant according to US Standard NFPA 701. All others are not currently rated.

Seaming

Sugi and Montana are the only fabrics in the collection that can be seamed.

Horizontal patterns

Several fabrics in the Gallery Collection display a distinct horizontal pattern. Due to variations in the shade material and weaving process, these patterns may not match perfectly across adjacent shades.

Railroading

Railroading fabric is an option for applications that require shades wider than the usable roll width. Railroading rotates the fabric 90 degrees from its typical orientation. Please note if the fabric has a distinct pattern, this pattern will be rotated 90 degrees, thereby altering the final appearance of the shade. (Boxstitch, Fine Line, Kago, Plains, and Sugi cannot be railroaded.)

Standard fabric orientation



For applications within the usable roll width

Railroaded fabric orientation



For applications wider than the usable roll width

Stocking Categories

All fabrics in The Gallery Collection have a Premium stocking level, with the exception of Boxstitch and Singing in the Rain (which have a custom stocking level).

Category 2: Premium

Completed shades are available for shipping within 20 business days from receipt of order.

- Memo sample requests will be processed within 48 to 72 hours. Refer to the SCT under marketing materials for model numbers or call your Lutron Customer Service representative for assistance
- Fabric binder cards are available for these fabrics. Binder update kits will be provided FREE of charge to those who have registered their fabric binders. **If your fabric binder has not been registered, please visit www.lutron.com/binders to register.** In addition, individual binder cards will be available to purchase for \$5.00 dealer cost. Refer to the SCT under marketing materials for model numbers or call your Lutron Customer Service representative for assistance.

Category 3: Custom

- Completed shades are available for shipping within 30 business days from receipt of order, subject to availability
- Memo samples are to be provided by the fabric supplier. Contact your Lutron Customer Service representative to process these samples which will ship directly to you from the supplier.
- Fabric binder cards will **not** be available for custom fabrics

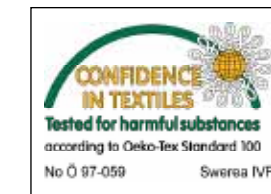
Green Glossary

PVC-free

Polyvinyl Chloride (PVC) is used in many fabrics to make them more durable. The additives in PVC off-gas and create the familiar “new car” smell when a shade is first installed. PVC-free fabrics do not contain these additives and as a result, do not release this scent.

Recycled content

Recycled products are made in part or whole from materials which contain either reused, remanufactured, or reconditioned material, and includes recycled raw materials. Recycled fabrics reduce the amount of waste entering landfills and decrease the need for virgin materials.



Oeko-Tex® Standard 100 Certification

The Oeko-Tex® Association is an independent organization that tests and certifies fabrics to be free of harmful concentrations of chemicals. These substances must be non-existent or at trace levels in order to receive this certification.

Items marked with this label have been certified as being good for personal well-being. Certification must be renewed every twelve months to ensure continual compliance with testing standards.

For more information on Oeko-Tex testing standards, please visit their website: www.oeko-tex.org

Note: The Oeko-Tex Standard 100 Certification shown above has been issued to Almedahls for Scratch, Crosshatch, and Fine Line fabrics.

Lutron® Technology

The technology behind the experience is the Sivoia® Quiet Electronic Drive. Hidden inside each shade roller tube is a patented intelligent drive, offering a number of features that translate to ease of operation, reliability, and elegance.

Features:

- Ultra-quiet operation (less than 38 dBA at 3 ft., except for roller 20™, which is 44 dBA at 3 ft.)
- Symmetrical light gaps
- Intelligent bottom bar alignment
- 8-year warranty

Lutron roller shades can be controlled by the following systems:

- Sivoia® QS
- Sivoia QS Wireless
- Sivoia QED®

Refer to www.lutron.com/fabrics to learn more.



Resources

The following resources are available in the SCT or by contacting Customer Service at 1.888.LUTRON1:

- 8 in. x 10 in. memo samples – all requests will be processed within 48 to 72 hours
- Larger fabric samples
- A fabric binder (**P/N GALLERY-BNDR-SET**)

Additional resources available online:

- A quick reference matrix
- Sustainable fabric guide
- How to specify
- Other fabric collections



fabric binder and cards



fabric memo samples

Lutron® Quality and Innovation

At Lutron, our belief in innovation has made us the world leader in light control. We believe that when a company's products are best in class, and when a company is a leader in the industry, quality, technology, and market leadership follow.

Lutron pioneered the invention of the first solid-state dimmer in 1961 and the invention of the first ultra-quiet precision-controlled roller shade in 2000. Our innovative approach to design and commitment to pushing the boundaries of convention have made Lutron the first choice for the finest residences and buildings in the world.

Lutron lighting controls are present on projects around the globe, from the spectacular St. Paul's Cathedral in England to the incredible Beijing headquarters of the Bank of China.

Lutron holds over 250 patents and manufactures more than 15,000 products. For 50 years, Lutron has exceeded the highest standards of quality and service. Every one of our products is quality-tested before it leaves the factory to ensure the highest level of reliability.

Our belief in delivering value to the customer is what has kept us strong. Lutron thrives because it delivers regional, specialized service on a global scale and engineers solutions to meet the unique needs of each customer.

With a full line of shading solutions, Lutron has opened a new world of possibilities by seamlessly integrating electric and daylight control with a focus on innovation, world-class engineering, and customer service. Lutron blends technology with design and environmental sensitivity to provide the ideal solution for total light control.



The White House, Washington, D.C.



private residence, France



Bank of China, Beijing

Lutron® has been the world's leading manufacturer of lighting controls and systems for 50 years. With the addition of shading solutions, Lutron has opened a new world of possibilities by seamlessly integrating electric and daylight control with a focus on innovation, world-class engineering, and customer service. Lutron blends technology with design and environmental sensitivity to provide the ideal solution for total light control.

www.lutron.com/shadingsolutions

World Headquarters 1.610.282.3800
Technical Support Center 1.800.523.9466 (Available 24/7)
Customer Service 1.888.LUTRON1
Email: shadinginfo@lutron.com



© 10/2012 Lutron Electronics Co., Inc. P/N 367-1528 REV G

