

Lutron® has been the world's leading manufacturer of lighting controls and systems for over 50 years. With the addition of shading solutions, Lutron has opened a new world of possibilities by seamlessly integrating electric and daylight control with a focus on innovation, world-class engineering, and customer service. Lutron blends technology with design and environmental sensitivity to provide the ideal solution for total light control.



seeTouch® wall control option

www.lutron.com/shadingsolutions

World Headquarters 1.610.282.3800
Technical Support Center 1.800.523.9466 (Available 24/7)
Customer Service 1.888.LUTRON1
Email: shadinginfo@lutron.com



© 01/2013 Lutron Electronics Co., Inc. P/N 367-1593 REV K



The Classico™ Collection Roller Shade Fabrics

Available For:
Sivoia QED®
Sivoia® QS
Sivoia® QS Wireless





The Classico™ Collection by Lutron®

Durability Meets Design

For larger applications, durable and long-lasting fabrics are a necessity. The Classico Collection by Lutron includes fabrics that provide wider roll widths, sustainable characteristics, and designer options available in vibrant colors.

Whether your project is a hotel in need of a contemporary look, an office with a sustainable initiative, or a residence with large windows, The Classico Collection provides the perfect shading solution.

Table of Contents



Sheer Fabrics

Maintain view while reducing glare and solar heat gain:

SheerShade®
Designer
Dual-sided

SheerShade	page
GreenScreen® Revive	5
SheerLite™	5
Value Select 2	6
Basketweave 90	6
Basketweave E Screen (ES)	7
NEW Basketweave E Screen (ES) with KOOLBLACK™ Technology	7
Basketweave MS	8
Basketweave NT	8

	page
NEW Basketweave 4000 Eco	9
Basketweave 3000	9
Basketweave 2000	10
Basketweave TS	10
NEW Basketweave Eco2	11

	page
Jacquard	13
Cinq	13
Opac	14
Proton (Trevira CS™)	14

Dual-sided

Designer

	page
Vela	12
MS Designer	12

	page
Basketweave 27	15
Basketweave ST	15
Basketweave Silver	16



Dim-Out Fabrics

Reduces view to shapes and shadows:

Translucent

Translucent	page
Value Select 1	18
Basketweave	18
Translucent P	19



Blackout Fabrics

Eliminate all daylight while reducing heat gain:

Standard
Dual-sided

Standard	page
Standard	21

Dual-sided	page
Premiere	22
Value Premiere	22
NEW Avila	23
NEW Edessa FR	23

Sheer Fabrics

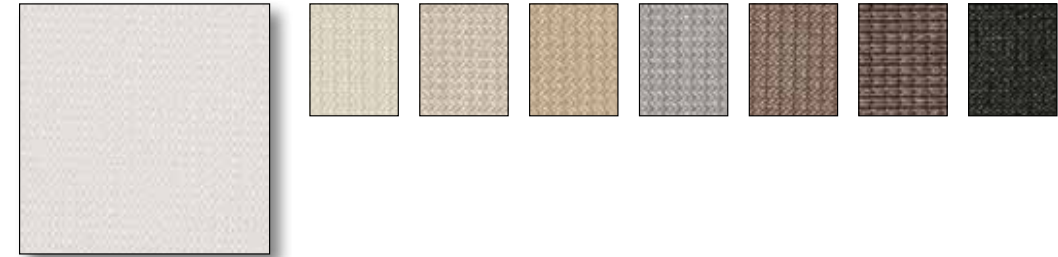


Welcome daylight and enjoy views with a sheer fabric from Lutron®.

Sheer fabrics reduce solar heat gain and UV penetration while maintaining views to the outside. Lutron sheers are offered in SheerShade®, designer, and dual-sided fabric options to accommodate the needs of any space.

Sheer — SheerShade®

GreenScreen® Revive



Available colors - White, Sand, Linen, Wheat, Stone, Mushroom, Suede, Dusk

Openness factors: 1% and 5%
 Usable fabric roll width: 116 in. (2946 mm)
 Composition: 89% recycled polyester
 11% polyester
 (100% recyclable)
 Railroading: Yes
 Seaming: Yes
 Fire rating: NFPA 701

Inventory category: Premium



GreenScreen®
 Revive has been
 certified for its material
 content, recyclability,
 and manufacturing
 characteristics.
 c2ccertified.com

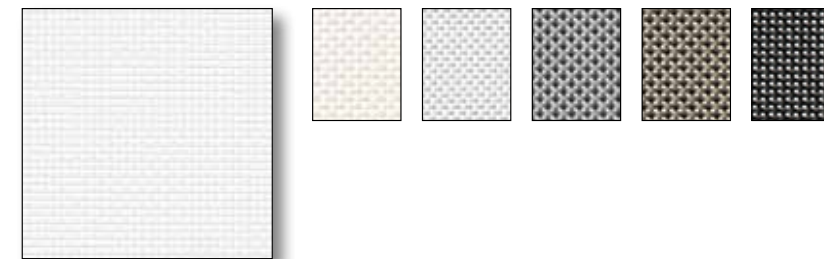


Sustainable Properties:



PVC-free

SheerLite™



Available colors - Pearl, Pearl/Oyster, Pearl/Gray, Charcoal/Gray, Charcoal/Brown, Charcoal

Openness factors: 3% and 5%
 Usable fabric roll width: 96 in. (2438 mm)
 Composition: 30% polyester
 70% PVC
 Railroading: Yes
 Seaming: Yes
 Fire rating: NFPA 701

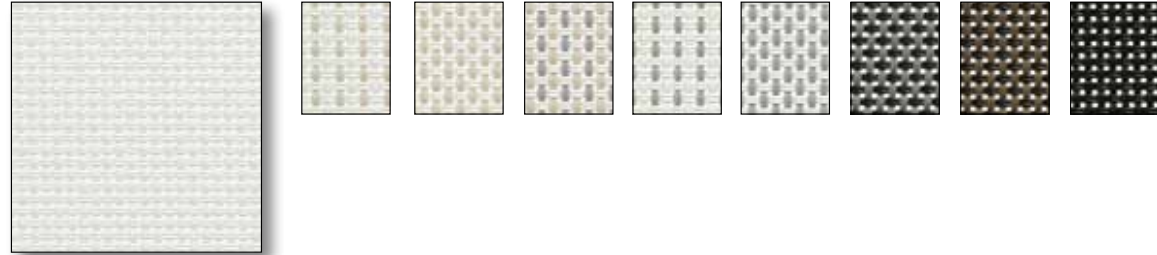
Inventory category: Stocked

Sustainable Properties:



Sheer—SheerShade®

Value Select 2



Available colors - Pearl, Pearl/Beige, Beige/White, Beige/Gray, Pearl/Gray, Gray/White, Charcoal/Gray, Charcoal/Brown, Charcoal

Openness factors: 8%
 Usable fabric roll width: 96 in. (2438 mm)
 Composition: 25% polyester
 75% PVC
 Railroading: Yes
 Seaming: Yes
 Fire rating: NFPA 701
 Inventory category: Stocked

Sustainable Properties:



Basketweave E Screen (ES)



Available colors - White/White, White/Pearl, White/Linen, Linen/Linen, Charcoal/Grey, Charcoal/Cocoa, Charcoal/Charcoal, Charcoal/Apricot, Cocoa/Cocoa, Cocoa/Apricot

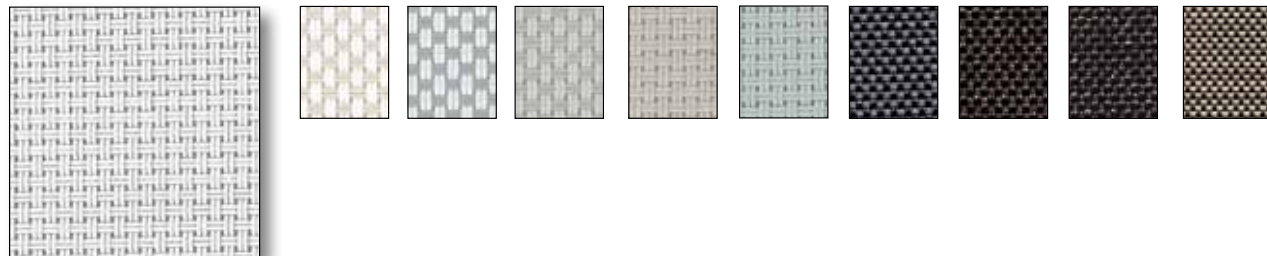
Openness factors: 1%, 3%, 5% and 10%
 Usable fabric roll width: 96 in. (2438 mm)*
 Composition: 36% fiberglass
 64% vinyl
 Railroading: Yes
 Seaming: Yes
 Fire rating: 1%, 3%, 5% and 10% - NFPA 701
 Inventory category: Premium

Sustainable Properties:



* Also available in 120 in. (3048 mm) usable roll width. Contact Customer Service for details.

Basketweave 90



Available colors - Oyster, Oyster/Beige, Oyster/Pearl Gray, Beige/Pearl Gray, Beige, Pearl Gray, Charcoal/Gray, Charcoal/Chestnut, Charcoal, Charcoal/Alpaca (Custom only)

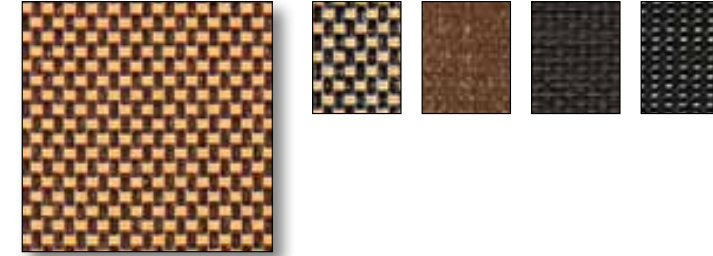
Openness factors: 1%*, 3%*, 5%* and 10%
 Usable fabric roll width: 96 in. (2438 mm)
 Composition: 35% fiberglass
 65% vinyl on fiberglass
 Railroading: Yes
 Seaming: Yes
 Fire rating: NFPA 701, M1

Sustainable Properties:



Inventory category: Stocked, Premium, and Custom (refer to www.lutron.com for details)

NEW Basketweave E Screen (ES) with KOOLBLACK™ Technology



Available colors - Cocoa/Apricot, Charcoal/Apricot, Cocoa/Cocoa, Charcoal/Cocoa, Charcoal/Charcoal

Openness factors: 3% and 5%
 Usable fabric roll width: 96 in. (2438 mm)*
 Composition: 36% fiberglass
 64% vinyl
 Railroading: Yes
 Seaming: Yes
 Fire rating: NFPA 701
 Inventory category: Premium

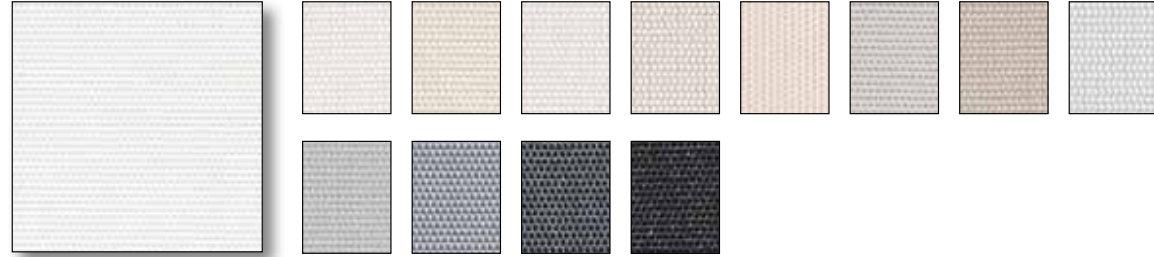
Sustainable Properties:



* Available in 120 in. (3048 mm) usable roll width. Contact Customer Service for details.

Sheer — SheerShade®

Basketweave MS



Available colors - White/White, White/Stone, Linen/Stone, White/Linen, White/Sable, Linen/Linen, Pearl/Linen, Pearl/Sable, White/Pearl, Pearl/Pearl, Linen/Ultramarine, Charcoal/Grey, Charcoal/Charcoal

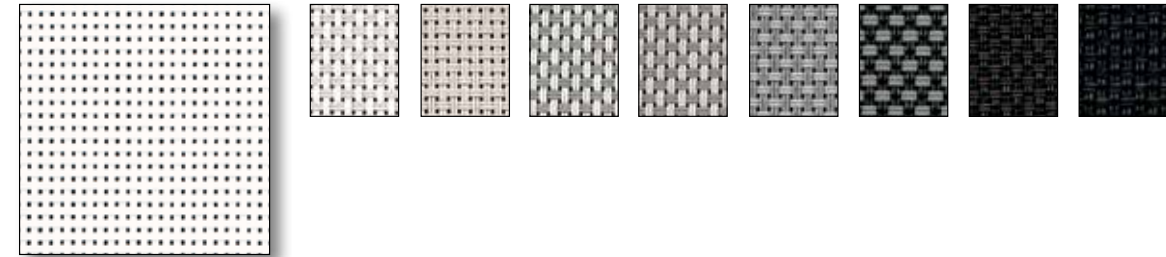
Openness factors: 3% and 5%
 Usable fabric roll width: 96 in. (2438 mm)*
 Composition: 36% fiberglass
 64% vinyl
 Railroading: No
 Seaming: Yes
 Fire rating: NFPA 701, M1

Inventory category: Stocked and Premium
 (refer to www.lutron.com for details)

Sustainable Properties:



NEW Basketweave 4000 Eco



Available colors - Chalk, Alabaster, Pebblestone, Granite, Greystone, Pewter, Ash, Tobacco, Ebony

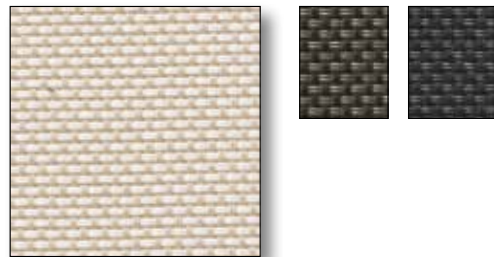
Openness factors: 3%*, 5%* and 10%
 Usable fabric roll width: 96 in. (2438 mm)
 Composition: 25% polyester
 75% vinyl on polyester
 Railroading: Yes
 Seaming: Yes
 Fire rating: NFPA 701

Inventory category: Stocked and Premium
 (refer to www.lutron.com for details)

Sustainable Properties:



Basketweave NT



Available colors - White/Pearl, Charcoal/Bronze, Charcoal/Charcoal

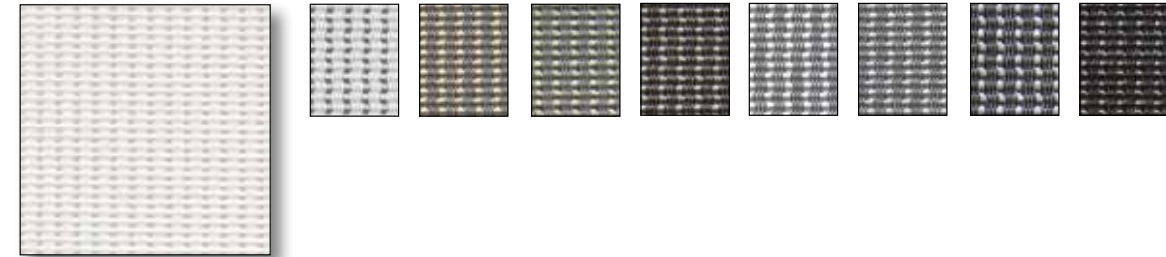
Openness factor: 10%
 Usable fabric roll width: 96 in. (2438 mm)
 Composition: 42% fiberglass
 58% vinyl
 Railroading: Yes
 Seaming: Yes
 Fire rating: NFPA 701, B1

Inventory category: Custom

Sustainable Properties:



Basketweave 3000



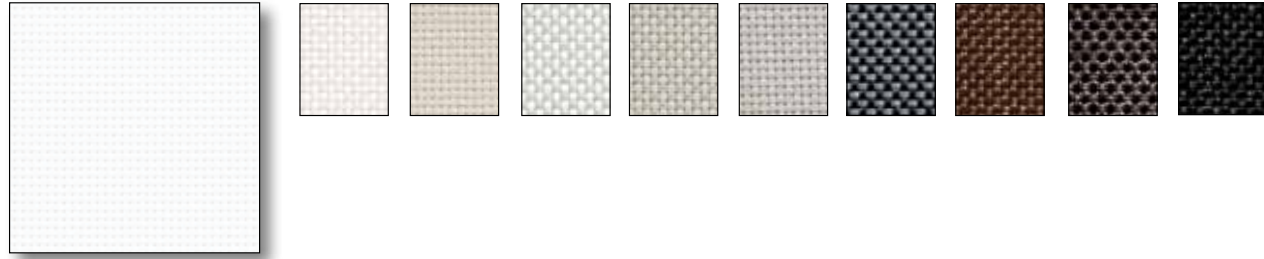
Available colors - Pearl White, Pale Grey, Harvest Wheat, Mossy Green, Espresso, Spanish Gray, Dusty Grey, Ninja Grey, Chocolate

Openness factor: 14%
 Usable fabric roll width: 72 in. (1829 mm)
 Composition: Warp = 35% Fiberglass, 65% vinyl on fiberglass
 Weft = 31% polyester, 69% vinyl on polyester
 Railroading: No
 Seaming: Yes
 Fire rating: NFPA 701

Inventory category: Custom

Sheer—SheerShade®

Basketweave 2000



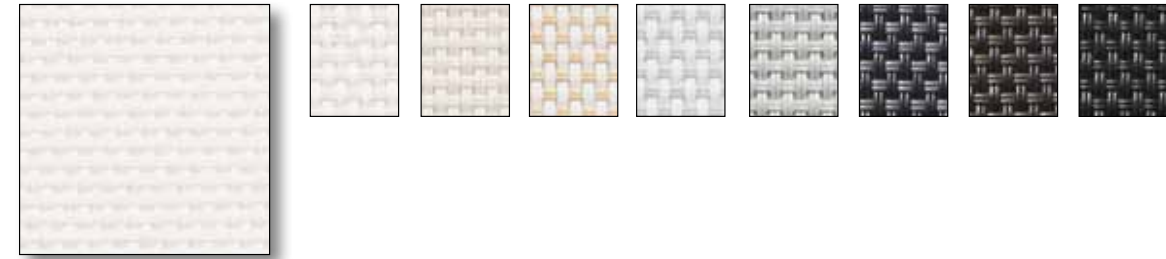
Available colors - White, White/Bone, Bone, White/Platinum, Bone/Platinum, Platinum, Charcoal/Gray, Bronze, Charcoal/Chestnut, Charcoal

Openness factors: 5%* and 10%
 Usable fabric roll width: 94 in. (2388 mm)
 Composition: 37% fiberglass
 63% vinyl on fiberglass
 Railroading: No
 Seaming: Yes
 Fire rating: NFPA 701
 Inventory category: Custom

Sustainable Properties:



NEW Basketweave Eco2



Available colors - Cotton, Almond, Barley, Wheat, Stone, Nickel, Slate, Bark, Midnight

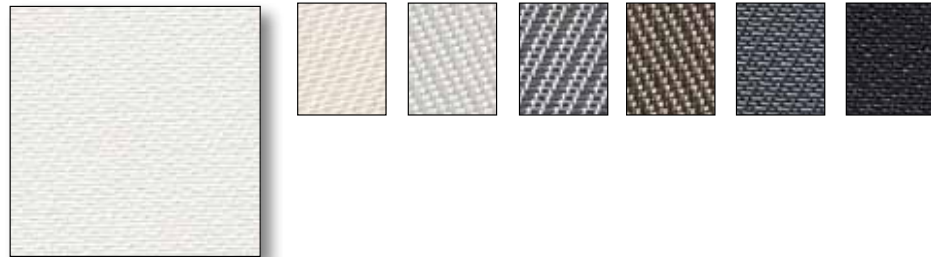
Openness factors: 3% and 5%
 Usable fabric roll width: 96 in. (2438 mm)
 Composition: 100% TPO (Thermoplastic Olefin)
 Railroading: Yes
 Seaming: No
 Fire rating: NFPA 701

Inventory category: Premium
 Note: Available with 1 inch exposed hembar only.

Sustainable Properties:

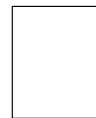


Basketweave TS



Available colors - White/White, White/Linen, Pearl/White, White/Grey-Charcoal, Charcoal/Sable, Charcoal/Grey, Charcoal/Charcoal

Openness factors: 3%
 Usable fabric roll width: 96 in. (2438 mm)
 Composition: 36% fiberglass
 64% vinyl
 Railroading: Yes
 Seaming: Yes
 Fire rating: NFPA 701
 Inventory category: Custom



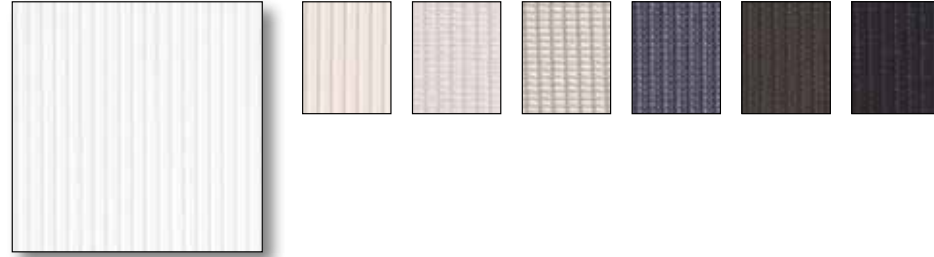
Lighter backing
 towards window
 (varies by color)

Sustainable Properties:



Sheer—Designer

Vela



Available colors - White, Linen, Pearl Linen, Pearl, Pewter, Charcoal Bronze, Charcoal

Openness factor: 3%
 Usable fabric roll width: 116 in. (2946 mm)
 Composition: 100% Polyester
 Railroading: Yes
 Seaming: Yes
 Fire rating: NFPA 701, M1, B1

Inventory category: Custom

Sustainable Properties:



Jacquard

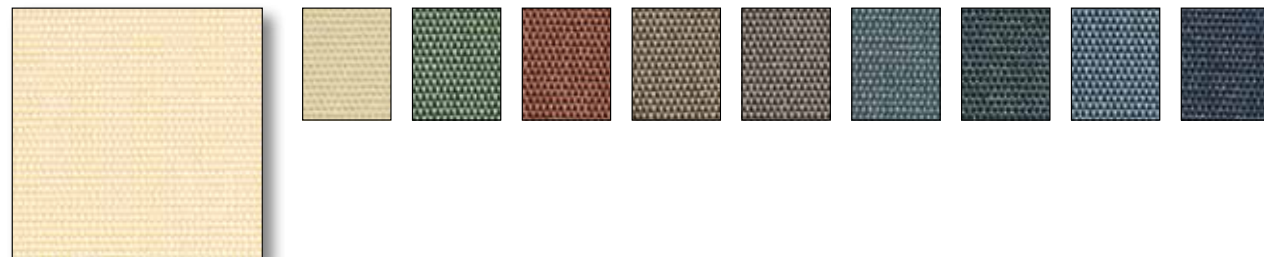


Available colors - Bamboo/Birch, Marble/Sand, Tweed/Oatmeal, Thatch/Wheatgrass, Tweed/Buckeye, Moire/Mocha, Bamboo/Wheat, Wicker/Mushroom, Honeycomb/Brown Sugar, Rattan/Umber, Bark/Tiger Oak, Bark/Cedar

Openness factors: 5%, 7% and 10% (varies by color)
 Usable fabric roll width: 96 in. (2438 mm)
 Composition: polyester with vinyl (% varies by color, some colors include acrylic)
 Railroading: No
 Seaming: Yes
 Fire rating: NFPA 701 (Bamboo/Birch and Marble/Sand only)

Inventory category: Premium

MS Designer



Available colors - White/Canary, Pearl/Canary, Charcoal/Parrot, Charcoal/Mandarin, Charcoal/Apricot, Charcoal/Sable, Grey/Huntergreen, Charcoal/Huntergreen, Charcoal/Sky, Charcoal/Ultramarine

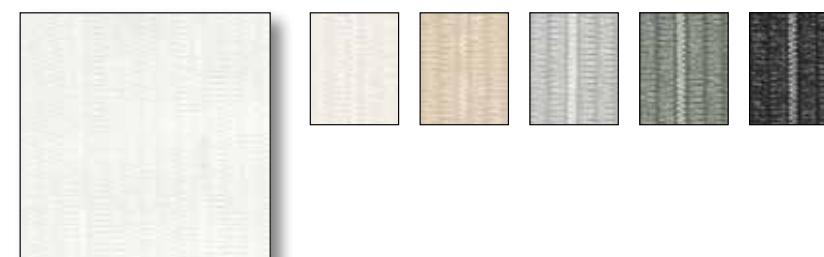
Openness factors: 3% and 5%
 Usable fabric roll width: 96 in. (2438 mm)*
 Composition: 36% fiberglass
 64% vinyl
 Railroading: No
 Seaming: Yes
 Fire rating: NFPA 701, M1

Inventory category: Custom

Sustainable Properties:



Cinq



Available colors - White, Off-White, Beige, Grey, Dark Grey, Black

Openness factor: >20%
 Usable fabric roll width: 116 in. (2946 mm)
 Composition: 100% Trevira CS™
 Railroading: No
 Seaming: No
 Fire rating: Inherently fire retardant; meets fire standards in all countries

Inventory category: Premium

Sustainable Properties:



Sheer—Designer

Opac



Available colors - White, Off-White, Beige, Sand Brown, Khaki Brown, Dark Brown, Grey, Dark Grey, Black, Ice Blue, Midnight Blue, Cerise, Lacquer Red, Wine Red, Gold Yellow, Aqua Green, Lime Green, Forest Green

Openness factor: >20%
 Usable fabric roll width: 116 in. (2946 mm)
 Composition: 100% Trevira CS™
 Railroading: No
 Seaming: No
 Fire rating: Inherently fire retardant; meets fire standards in all countries

Inventory category: Premium

Sustainable Properties:

PVC-free

Proton (Trevira CS™)



Available colors - Bone, Wheat, Pewter, Gray

Openness factor: >10%
 Usable fabric roll width: 80 in. (2032 mm)
 Composition: 100% Trevira CS™
 Railroading: No
 Seaming: No
 Fire rating: Inherently fire-retardant; meets fire standards in all countries

Inventory category: Premium

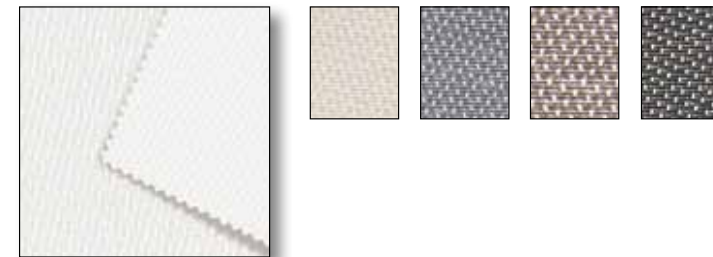
Sustainable Properties:



PVC-free

Sheer—Dual-Sided

Basketweave 27



Available colors - Oyster, Oyster/Beige, Oyster/Pewter, Oyster/Chestnut, Oyster/Charcoal

Openness factors: 1%*, 3%*, 5%* and 10%
 Usable fabric roll width: 96 in. (2438 mm)
 Composition: 36% fiberglass
 64% vinyl on fiberglass
 Railroading: Yes
 Seaming: Yes
 Fire rating: NFPA 701

Inventory category: Stocked

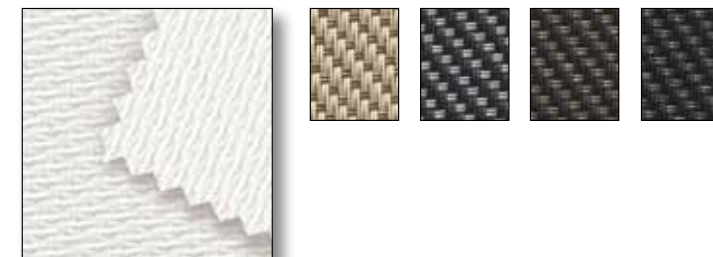


Off-white backing towards window

Sustainable Properties:



Basketweave ST



Available colors- White/White, Sable/Bronze, Charcoal/Grey, Charcoal/Bronze, Charcoal/Charcoal

Openness factor: 5%
 Usable fabric roll width: 96 in. (2438 mm)
 Composition: 42% fiberglass
 58% vinyl
 Railroading: Yes
 Seaming: Yes
 Fire rating: NFPA 701, M1, B1

Inventory category: Custom



Lighter version of color backing towards window

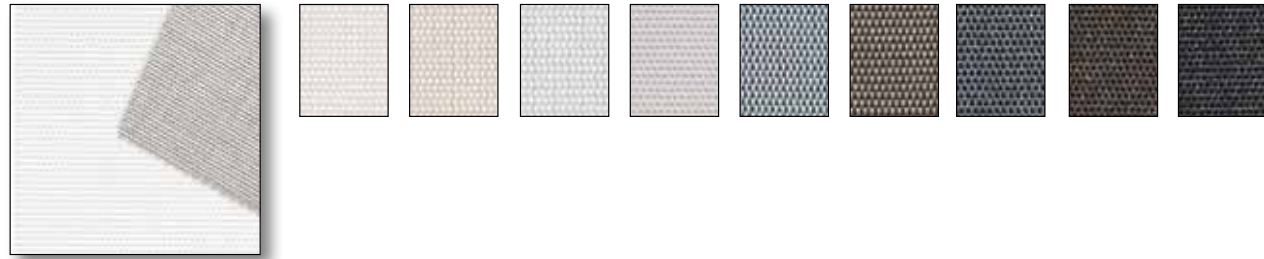
Sustainable Properties:



* Available in 124 in. (3150 mm) usable roll width. Contact Customer Service for details.

Sheer—Dual-Sided

Basketweave Silver



Available colors - White, Beige, Dark Beige, Light Grey, Misty Grey, Steel Grey, Bronze, Dark Grey, Chocolate Brown, Black

Openness factor: 4%
 Usable fabric roll width: 92 in. (2337 mm)
 Composition: 36% fiberglass
 64% vinyl with a silver lined backing

Railroading: No
 Seaming: No
 Fire rating: NFPA 701, M1

Inventory category: Premium



Silver backing towards window for maximum solar reflectance (Rs)

Sustainable Properties:



Dim-Out Fabrics



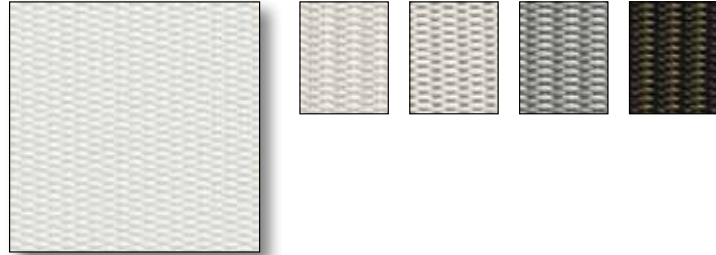
Retreat with a dim-out fabric that affords privacy from the outside while still allowing light through the fabric.

Translucent fabrics, a subset of dim-out fabrics, reduce the view to shapes and shadows, while allowing a soft light to enter the room.

photo © Electronics Design Group, 2008
 Bill Psolka, Psolka Photography

Dim-Out—Translucent

Value Select 1



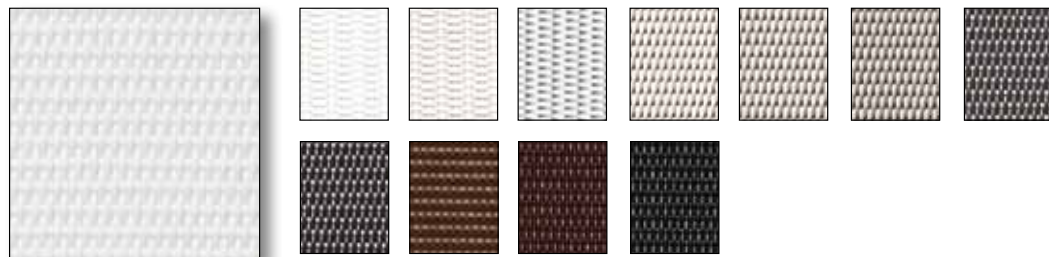
Available colors - Pearl, Pearl/Linen, Linen/Gray, Slate/Gray, Charcoal/Brown

Openness factor: 1%
 Usable fabric roll width: 96 in. (2438 mm)
 Composition: 25% polyester
 75% PVC
 Railroading: Yes
 Seaming: Yes
 Fire rating: NFPA 701
 Inventory category: Stocked

Sustainable Properties:



Basketweave



Available colors - Chalk, Pearl, Alabaster, Grey, Sand, Taupe, Clay, Fleece, Mocha, Flint, Mink, Ebony

Openness factor: 1%
 Usable fabric roll width: 94 in. (2388 mm)
 Composition: 24% polyester
 76% vinyl on polyester
 Railroading: Yes
 Seaming: Yes
 Fire rating: NFPA 701
 Inventory: Stocked and Premium
 (refer to www.lutron.com for details)

Dim-Out—Translucent

Translucent P



Available colors - White, Sahel (Rice), Mississippi (Hemp), Chartreux, Loutre

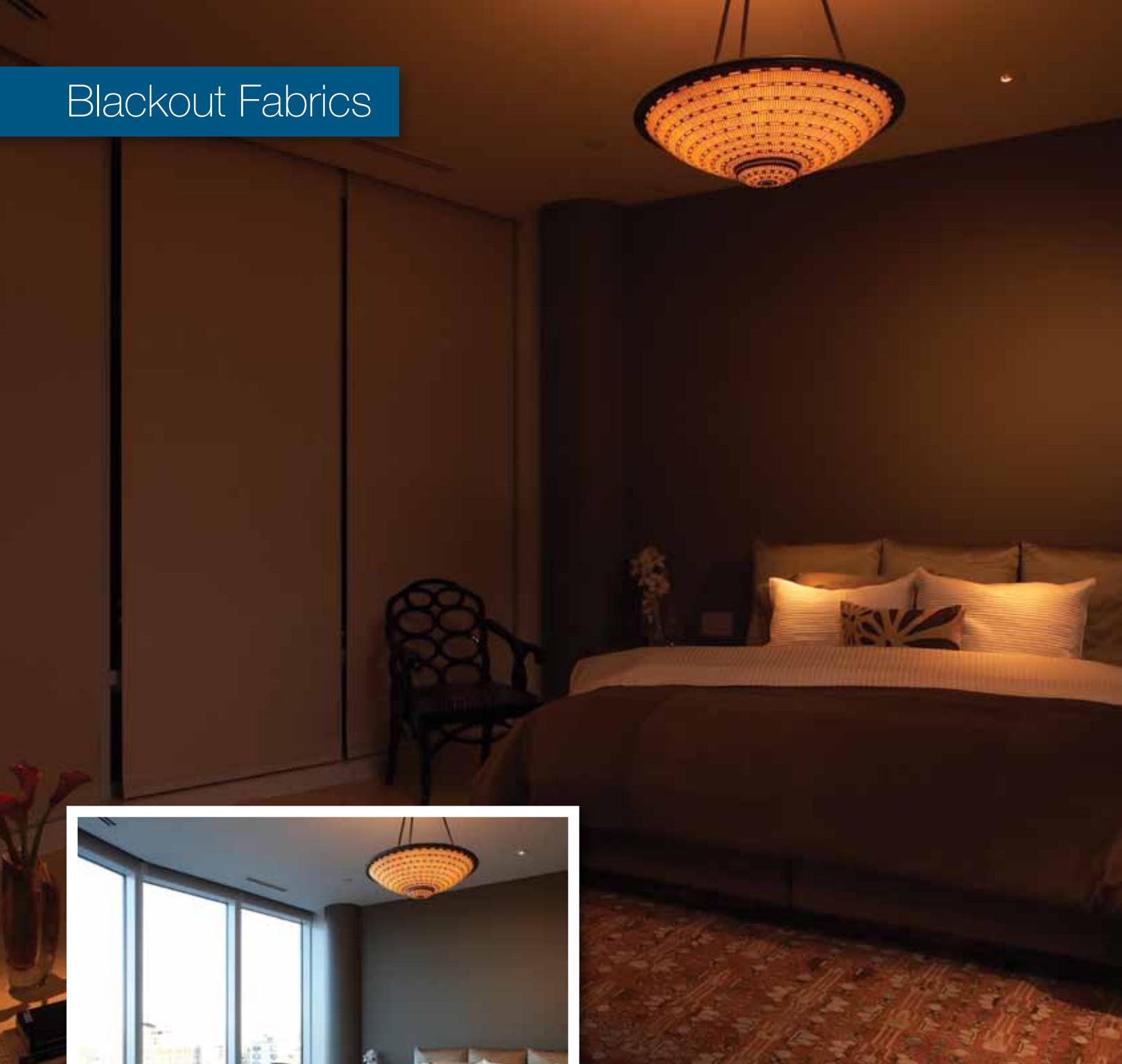
Openness factor: 1%
 Usable fabric roll width: 76 in. (1930 mm)
 Composition: 100% woven fiberglass
 Railroading: Yes
 Seaming: Yes
 Fire rating: NFPA 701, M1
 Inventory category: Stocked

Sustainable Properties:



PVC-free

Blackout Fabrics

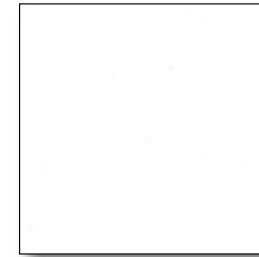


Create darkness any time of the day with a blackout shade.

Lutron® blackout fabrics offer versatility with standard or dual-sided options. Standard fabrics provide a uniform appearance on both sides of the fabric while dual-sided fabrics reflect more daylight with a lighter colored backing.

Blackout—Standard

Standard



Available colors - White, Cream, Oyster, Champagne, Gray, Black

Openness factor:	0%
Usable fabric roll width:	70 in. usable
Composition:	37% fiberglass 63% vinyl on fiberglass
Railroading:	Yes
Seaming:	Yes
Fire rating:	NFPA 701
Inventory category:	Stocked and Premium (refer to www.lutron.com for details)

Sustainable Properties:



Blackout—Dual-Sided

Premiere



Available colors - White, Sahel, Mississippi, Chartreux, Loutre

Openness factor: 0%
 Usable fabric roll width: 94 in. usable (2388 mm)
 Composition: 42% fiberglass
 51% acrylic
 7% cotton light-colored
 flocked backing
 Railroading: Yes
 Seaming: Yes
 Fire rating: NFPA 701, M1, B1
 Inventory category: Stocked and Premium (refer to www.lutron.com for clarification)



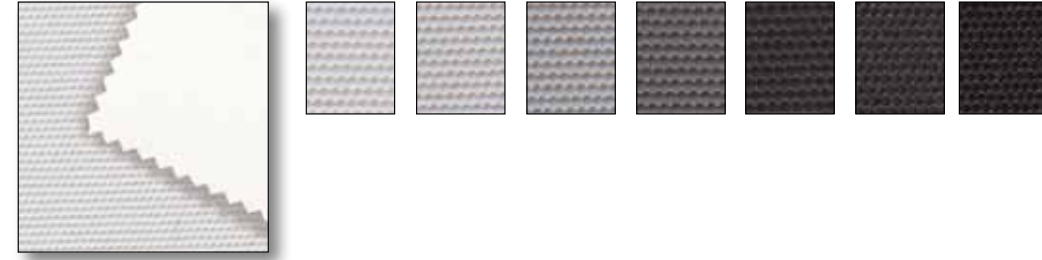
Off-white
backing towards
window

Sustainable Properties:



PVC-free

NEW Avila



Available colors - White, Pearl, Linen, Khaki, Slate Grey, Olive, Chocolate, Black

Openness factor: 0%
 Usable fabric roll width: 108 in. (2743 mm)
 Composition: 100% polyester
 Acrylic foamed backing
 Railroading: No
 Seaming: Yes
 Fire rating: NFPA 701
 Inventory category: Stocked



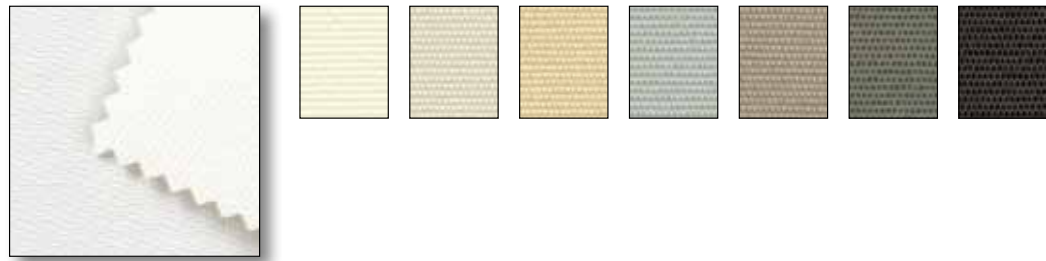
Off-white
backing towards
window

Sustainable Properties:



PVC-free

Value Premiere



Available colors - White, Birch, Sand, Wheat, Canyon, Mushroom, Graphite, Onyx

Openness factor: 0%
 Usable fabric roll width: 92 in. (2337 mm)
 Composition: 100% polyester with
 acrylic foamed backing
 Railroading: Yes
 Seaming: Yes
 Fire rating: NFPA 701
 Inventory category: Stocked



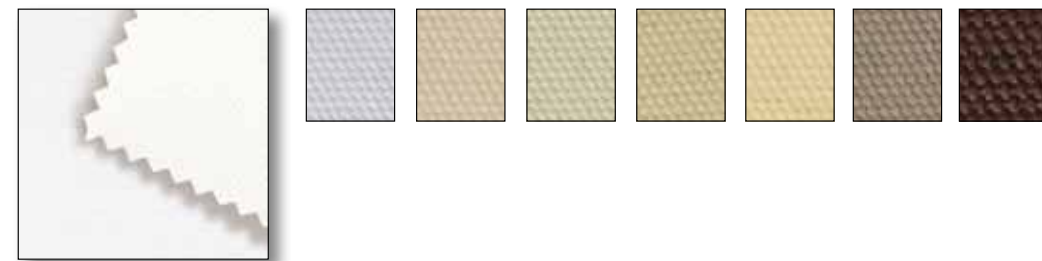
Off-white
backing towards
window

Sustainable Properties:



PVC-free

NEW Edessa FR



Available colors - Arctic, Glacier, Beach, Reef, Savannah, Desert, Tundra, Mesa

Openness factor: 0%
 Usable fabric roll width: 116 in. (2946 mm)
 Composition: 47% polyester
 53% acrylic
 Railroading: No
 Seaming: Yes
 Fire rating: NFPA 701
 Inventory category: Premium



Off-white
backing towards
window

Sustainable Properties:



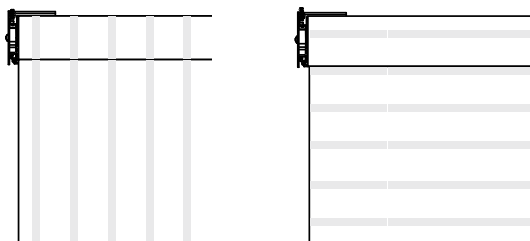
PVC-free

Fabric Rules

Railroading

Railroading fabric is an option for applications requiring shades wider than the usable roll width. Railroading rotates the fabric 90 degrees from its typical orientation. If the fabric has a distinct pattern, please note that this pattern will also be rotated 90 degrees, thereby altering the final appearance of the shade.

Standard shade Railroaded shade



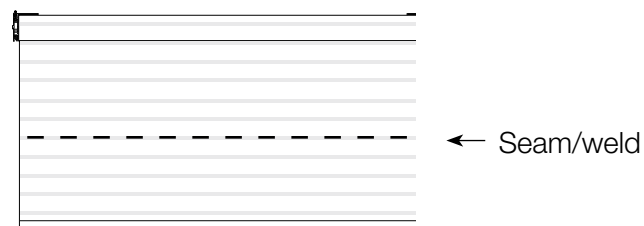
For applications that are narrower than the usable roll width

For applications that are wider than the usable roll width

Seaming/Welding

Some fabrics can be seamed/welded together in order to increase the size of a railroaded shade beyond its fabric roll width. This technique is used to achieve long, wide shades. If a fabric has a distinct pattern, aligning the pattern during seaming may alter the final appearance of the shade.

Railroaded and seamed shade



For applications that require a railroaded shade and a length that exceeds the usable roll width

Green Glossary

PVC-free

Polyvinyl Chloride (PVC) is used in many fabrics to make them more flexible and durable. The additives in PVC off-gas and create the familiar “new car” smell when a shade is first installed. PVC-free fabrics do not contain these additives and as a result, do not release this scent.

Recycled content

Recycled products are made in part or whole from materials which contain either reused, remanufactured, or reconditioned material, and includes recycled raw materials. Recycled fabrics reduce the amount of waste entering landfills and decrease the need for virgin materials.

GREENGUARD® Certification

GREENGUARD Environmental Institute is an independent organization that tests and certifies materials used for furnishings to ensure they contain minimal or non-existent levels of contaminants that could impact indoor air quality. GREENGUARD Certified fabrics from Lutron® have either GREENGUARD Indoor Air Quality Certification® for low-emitting furnishings or GREENGUARD Children & Schools Certification for low-emitting furnishings used in educational environments.

Oeko-Tex® Standard 100 Certification

The Oeko-Tex® Association is an independent organization that certifies fabrics to be free of harmful concentrations of chemicals. These substances must be non-existent or at trace levels in order to receive this certification.

Stocking Categories

Category 1: Stocked

Completed shades are available for shipping within 15 business days from receipt of order.

Category 2: Premium

Completed shades are available for shipping within 20 business days from receipt of order.

Please note that the following sampling information applies to both **stocked** and **premium** fabrics:

- Memo sample requests will be processed within 48 to 72 hours. Refer to the SCT under marketing materials for model numbers or call your Lutron Customer Service representative for assistance
- Fabric binder cards are available for these fabrics. Binder update kits will be provided FREE of charge to those who have registered their fabric binders. **If your fabric binder has not been registered, please visit www.lutron.com/binders to register.** In addition, individual binder cards will be available to purchase for \$5.00 dealer cost. Refer to the SCT under marketing materials for model numbers or call your Lutron Customer Service representative for assistance.

Category 3: Custom

- Completed shades are available for shipping within 30 business days from receipt of order, subject to availability.
- Memo samples are to be provided by the fabric supplier. Contact your Lutron Customer Service representative to process these samples which will ship directly to you from the supplier.
- Fabric binder cards will **not** be available for custom fabrics.

Lutron® Technology

The technology behind the experience is the Lutron patented shading drive. Hidden inside each shade roller tube is a patented intelligent drive offering a number of features that translate to ease of operation, reliability, and elegance.

Features:

- Ultra-quiet operation (38 dBA at 3 ft., except roller 20™, which is 44 dBA at 3 ft. and roller 300™ which is <50 dBA)
- Symmetrical light gaps
- Intelligent bottom bar alignment
- 8-year warranty



Quiet Electronic Drive

- Sivoia QED®
- Sivoia® QS
- Sivoia® QS Wireless

