



**Medieval Romance - Magical's Realm Oracle**

*-Guidebook-*



**Card Title: Empower**

**Keywords:**

- Strength
- Inner power
- Self-confidence
- Good Alliance
- Support Each Other
- Inner Strength

**Card Description:**

When the Empower card appears, it signifies a period of personal growth and empowerment. You are being called to acknowledge your innate abilities and tap into the reservoir of magic that resides within you. Trust in your intuition and believe in your capabilities. By aligning yourself with the energies of the universe, you can achieve greatness and manifest your desires with ease.

This card serves as a reminder that you are a powerful being capable of creating your own reality. Embrace your uniqueness and stand tall in your power. Now is the time to take inspired action and pursue your dreams with confidence. Trust in the magic of the universe to support you on your journey towards self-discovery and fulfilment.

**Guidance**

Empowerment is the key to unlocking your inner potential and harnessing the magic within. Just as the wizard channels the energies of the universe through his staff, you too possess the ability to connect with the limitless power that surrounds you. Now is the time to embrace your strength and step into your true potential.



**Card Title: Hex**

**Key Themes:**

- **Obstacles**
- **Bad Energy**
- **Negativity**
- **Protection ( Need )**
- **Resilience**
- **Breaking Free from Curse**

**Card Description:**

When the Hex card appears, it signals a time of adversity or difficulty. You may feel as though you are facing obstacles beyond your control or experiencing a string of misfortune. However, it's essential to recognize that you have the strength and resilience to overcome any challenges that come your way.

This card serves as a reminder to stay grounded and focused amidst the chaos. Take proactive steps to protect yourself from negative energies and seek support from trusted allies. Trust in your ability to break free from any hexes or curses that may be holding you back. By staying true to yourself and remaining resilient in the face of adversity, you can emerge stronger and more empowered than ever before.

**Guidance:**

The Hex card warns of external influences or negative energies that may be impacting your journey. Just as a wizard faces the challenges of spells gone awry, you may encounter obstacles or setbacks that test your resolve. It's essential to remain vigilant and protect yourself from harmful influences. Remember that you possess the power to overcome any hex or curse placed upon you.



**Card Title: Cursed Altar**

**Key Themes:**

- **Darkness**
- **Negativity**
- **Deception**
- **Release**
- **Block**
- **Bad Omen**

**Card Description:**

When the Cursed Altar card appears, it indicates that you may be entangled in a situation or relationship that is not serving your highest good. This could be a toxic environment, negative thought patterns, or harmful influences from others. It's essential to recognize the signs and take action to cleanse and purify your energy.

This card calls for a release of anything that no longer serves your growth and evolution. Just as a wizard would cleanse a cursed altar to restore its sanctity, you must cleanse your life of negativity to reclaim your power. Trust in the process of transformation and know that by releasing what no longer serves you, you can create space for new blessings and opportunities to enter your life.

**Guidance:**

The Cursed Altar card represents a place of darkness and negativity that may be influencing your life. Like a hidden altar obscured by shadows, there are unseen forces at work that could be affecting your well-being. Be wary of environments or relationships that drain your energy and lead you away from your path. It's time to cleanse and purify your surroundings to break free from the grip of negativity.





**Card Title: Enchanter**

**Key Themes:**

- **Creativity**
- **Manifestation**
- **Magic Knowledge**
- **Mastery**
- **Transformation**
- **Creator**

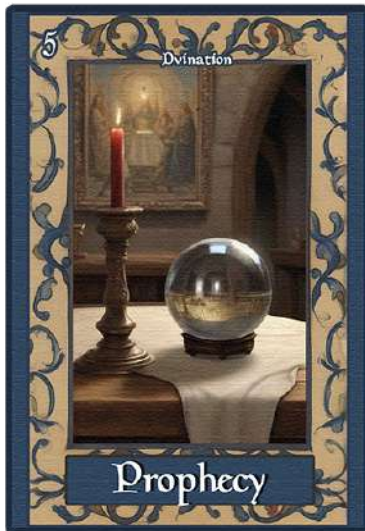
**Card Description:**

When the Enchanter card appears, it signifies a time of profound creativity and empowerment. You are being called to tap into your inner wisdom and unleash your innate magic upon the world. Just as a wizard channels the energies of the universe to manifest their desires, you possess the ability to create miracles in your life.

This card encourages you to trust in your intuition and embrace your unique gifts and talents. By aligning yourself with the divine energies of creation, you can manifest your dreams with ease and grace. Believe in your ability to shape your reality and know that you are a powerful co-creator of your destiny. Embrace the magic within you and watch as miracles unfold in your life.

**Guidance:**

The Enchanter card embodies the mastery of magic and the art of manifestation. Like a skilled wizard weaving spells of enchantment, you have the power to shape your reality and manifest your desires. Embrace your innate creativity and harness the energies of the universe to bring your dreams to life. Trust in your abilities as a master of manifestation and watch as the world bends to your will.



**Card Title: Prophecy**

**Key Themes:**

- **Intuition**
- **Tarot**
- **Vision**
- **Destiny**
- **Guidance**
- **Insight**

**Card Description:**

When the Prophecy card appears, it signifies a profound connection to the divine and a heightened sense of intuition. You are being called to trust in your inner knowing and embrace the guidance that is being offered to you from the spiritual realms.

This card encourages you to pay attention to the signs and symbols that are appearing in your life. Whether it's a recurring dream, a chance encounter, or a sudden insight, trust that the universe is communicating with you and guiding you towards your highest good.

Now is the time to listen to the wisdom of your soul and follow the path that is being illuminated before you. Trust in the power of prophecy and know that you are being guided and supported every step of the way on your journey towards fulfilment and enlightenment.

**Guidance:**

The Prophecy card heralds a time of divine guidance and foresight. Like a Sorceress peering into the mists of time, you are being called to listen to the whispers of the universe and heed the signs and omens that are guiding you on your path. Trust in your intuition and the messages that are being revealed to you. Pay attention to synchronicities and symbols, for they hold the key to unlocking the secrets of your destiny.



**Card Title: Protection**

**Key Themes:**

- **Guardian**
- **Safety**
- **Defense**
- **Strength**
- **Divine Protection**
- **Boundaries**

**Card Description:**

When the Protection card appears, it signifies a need to strengthen your boundaries and protect yourself from negative influences. You may be facing challenges or obstacles that threaten your well-being, but know that you have the power to overcome them.

This card serves as a reminder to trust in the power of divine protection and call upon your inner strength to shield yourself from harm. Set clear boundaries and surround yourself with positive energy to repel negativity and keep yourself safe.

Now is the time to take proactive steps to safeguard your well-being and the well-being of those you care about. Trust in the strength of your inner guardian and know that you are always surrounded by a circle of light that keeps you safe and secure.

**Guidance:**

The Protection card serves as a shield against negativity and harm. Like a powerful barrier ward cast by a skilled wizard, you are being called to safeguard yourself and your loved ones from negative influences and energies. Trust in the power of divine protection to shield you from harm and keep you safe on your journey. Remember that you are surrounded by a circle of light that repels darkness and keeps you secure.



**Card Title: Trapped**

**Key Themes:**

- Blockage
- Trap
- Stuckness
- Delayed
- Limitation
- Confinement

**Card Description:**

When the Trapped card appears, it indicates that you may be feeling trapped or confined in a particular area of your life. Whether it's a job, relationship, or mindset, you may feel restricted by circumstances beyond your control.

This card serves as a reminder that you have the power to break free from any chains that bind you. Just as a wizard would use magic to escape captivity, you must tap into your inner resources to find liberation and freedom. Trust in your ability to overcome obstacles and navigate challenges with grace and determination.

Now is the time to break through the barriers that hold you back and step into your power. Trust in the process of transformation and know that by releasing what no longer serves you, you can create space for new opportunities and experiences to enter your life.

**Guidance:**

The Trapped card signifies a sense of confinement or limitation in your life. Like a sorceress ensnared by a spell or an undead trap, you may feel trapped in a situation that restricts your freedom and stifles your growth. It's essential to recognize the chains that bind you and take action to break free from their grip. Trust in your inner strength and resilience to overcome any obstacles that stand in your way.





**Card Title: Intuition**

**Key Themes:**

- **Inner Working**
- **Gut Feelings**
- **Intuition**
- **Inner Guidance**
- **Listen to Your Voice**
- **Trust**
- 

**Card Description:**

When the Intuition card appears, it signifies a deepening of your connection to your inner wisdom and intuition. You are being called to trust in the guidance that arises from within and follow the path that resonates with your soul.

This card encourages you to listen to the subtle whispers of your intuition and trust in the messages that are being revealed to you. Whether it's a gut feeling, a sudden insight, or a knowing beyond logic, trust that your intuition is guiding you towards your highest good.

Now is the time to quiet the noise of the outside world and tune into the stillness within. Trust in the wisdom of your intuition and allow it to illuminate your path with clarity and purpose. By honouring your inner guidance, you can navigate life's challenges with grace and confidence, knowing that you are always guided and supported by the universe.

**Guidance:**

The Intuition card celebrates the power of inner knowing and divine guidance. Like a Seeress relying on her instinct and visionary inner insight, you are being called to trust in the wisdom of your intuition. Tune into the subtle whispers of your soul and allow your inner guidance to lead you on your path. Remember that you possess an innate connection to the universe and the ability to discern truth



**Card Title: Synergy**

**Key Themes:**

- **Collaboration**
- **Unity**
- **Cooperation**
- **Synchronicity**
- **Amplification**
- **Collective power**

**Card Description:**

When the Synergy card appears, it signifies a time of alignment and collaboration. You are being called to work together with others to achieve a common goal or vision. Just as different elements come together to form a powerful spell, your unique talents and strengths complement those of others to create something greater than the sum of its parts.

This card encourages you to embrace the power of synergy and recognize the strength that comes from working in harmony with others. Trust in the divine timing of synchronicities and allow the universe to guide you towards the right connections and collaborations. Now is the time to set aside competition and ego and work together towards a shared vision of abundance and prosperity. By harnessing the collective power of synergy, you can manifest miracles and create positive change in your life and the world around you.

**Guidance:**

The Synergy card embodies the harmonious blending of energies to create a greater whole. Like a master wizard / sorceress orchestrating spells in perfect harmony, you are being called to recognize the power of collaboration and cooperation. Trust in the synergy of your connections and relationships to amplify your efforts and manifest your desires. Together, you can achieve greatness and bring about positive change in the world.



**Card Title: Contract**

**Key Themes:**

- **Agreements**
- **Commitments**
- **Obligations**
- **Clarity**
- **Offering / Opportunity**
- **Accountability**

**Card Description:**

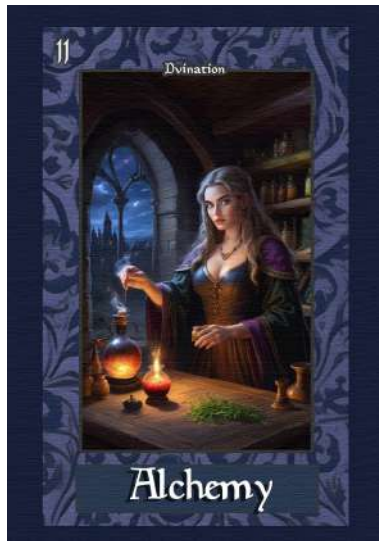
When the Contract card appears, it signifies a significant agreement or commitment coming into your life. Whether it's a legal contract, a verbal agreement, or a personal commitment, you are being called to honour your word and fulfil your obligations.

This card encourages you to approach contracts and agreements with clarity and discernment. Take the time to review the terms and conditions thoroughly and ensure that they align with your values and intentions. Set clear boundaries and communicate your expectations openly to avoid misunderstandings or conflicts down the line. Now is the time to take responsibility for your commitments and uphold your end of the bargain. By honouring your contracts with integrity and accountability, you can build trust and foster healthy relationships in all areas of your life.

**Guidance:**

The Contract card symbolises agreements, commitments, and obligations.

Like a wizard joining a guild or sorcerer community, you are entering into a formal agreement or arrangement that will impact your life. It's essential to read the fine print, understand the terms, and ensure that the agreement aligns with your values and intentions. Remember that every contract carries responsibilities and consequences, so choose wisely and proceed with caution.



**Card Title: Alchemy**

**Key Themes:**

- Transformation
- Manifestation
- Transmutation
- Inner Wisdom
- Creativity
- Potential

**Card Description:** When the Alchemy card appears, it signifies a powerful transformation taking place in your life. This card embodies the essence of change, urging you to harness your inner resources to manifest your desires and transmute challenges into opportunities. Just as an alchemist turns base metals into gold, you have the potential to transform your current circumstances into something extraordinary.

The Alchemy card invites you to explore your creativity and tap into your intuition. Embrace the process of transformation, whether it's personal growth, a new project, or a shift in perspective. Trust in your ability to blend different aspects of your life to create something unique and valuable. This is a time to experiment, innovate, and bring forth new ideas.

**Guidance:** The Alchemy card symbolises the magic of transformation and the power of manifestation. Like an alchemist mastering the elements, you are encouraged to embrace change and use it to your advantage. Focus on what you want to create in your life, and align your thoughts, actions, and intentions. Remember, the journey of transformation is just as important as the destination. Embrace your potential and allow your inner wisdom to guide you in this process of alchemical change.



**Card Title: Competition**

**Key Themes:**

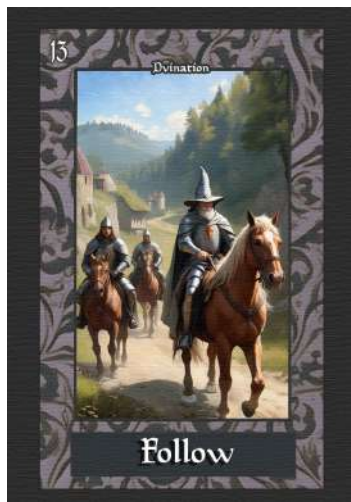
- Challenge
- Ambition
- Drive
- Growth
- Strategy
- Fair Play

**Card Description:** When the Competition card appears, it signals a time of challenge and ambition in your life. This card encourages you to recognize the competitive energies around you, whether in your career, personal endeavours, or creative pursuits. It highlights the drive to excel and the determination to push your limits, reminding you that healthy competition can foster growth and innovation.

The Competition card invites you to assess your motivations and strategies. Are you striving to be the best for the sake of recognition, or are you seeking personal improvement and mastery? While competition can spark ambition, it's essential to maintain integrity and fairness. Use this energy to elevate your skills and push yourself beyond your comfort zone, but also remember to celebrate the successes of others.

**Guidance:** The Competition card symbolises the dynamic nature of striving and ambition. Like athletes training for a championship, you are called to harness your competitive spirit to fuel your growth. Reflect on your goals and consider how competition can serve as a catalyst for personal development. Embrace challenges as opportunities to learn and evolve. Stay true to your values, and remember that collaboration can be just as powerful as rivalry. Strive for excellence, but ensure that your journey is rooted in respect and authenticity.





**Card Title: Follow**

**Key Themes:**

- Guidance
- Trust
- Intuition
- Support
- Pathways
- Alignment

**Card Description:** When the Follow card appears, it signifies a call to trust the guidance around you and to embrace the journey ahead. This card encourages you to listen to your intuition and recognize the support systems in your life. It's a reminder that you are not alone; others may be guiding you, whether through their words, actions, or simply their presence.

The Follow card invites you to explore new paths and to be open to where they may lead. Whether it's following your dreams, a mentor's advice, or your heart's desires, this is a time to step forward with confidence. Trust the process and allow yourself to be led by your inner compass. Embrace the adventure of discovery, knowing that each step brings you closer to alignment with your true self.

**Guidance:** The Follow card symbolises the importance of guidance and trust in your journey. Like a traveller on a winding path, you are encouraged to pay attention to the signs and signals around you. Reflect on who or what inspires you and consider how you can integrate their wisdom into your own life. Allow yourself to be vulnerable and receptive, and don't hesitate to seek support when needed. Remember, following your intuition and the guidance of others can lead you to profound insights and experiences. Embrace this journey with an open heart and mind.



**Card Title: Friendship**

**Key Themes:**

- Connection
- Support
- Loyalty
- Joy
- Collaboration
- Understanding

**Card Description:** When the Friendship card appears, it highlights the importance of connections and relationships in your life. This card signifies the value of true friendship—those bonds built on mutual trust, support, and joy. It serves as a reminder to nurture your relationships and appreciate the people who enrich your life.

The Friendship card invites you to embrace camaraderie and collaboration. This is a time to celebrate the friendships you have, as well as to seek new connections that resonate with your values and interests. Remember that friendship is a two-way street; invest in your relationships and be there for others, fostering a sense of community and understanding.

**Guidance:** The Friendship card symbolises the beauty of connection and the strength found in collaboration. Like a circle of friends supporting one another, you are encouraged to reach out and strengthen your bonds. Reflect on the friendships that uplift you and consider how you can bring more joy into these connections. Be open to new friendships that may enter your life and approach them with an open heart. Share your thoughts, experiences, and laughter, and remember that together, you can navigate life's challenges more easily. Embrace the spirit of friendship, and let it guide you toward deeper understanding and fulfilment.



**Card Title: Delusional**

**Key Themes:**

- Illusion
- Reality Check
- Self-Deception
- Awareness
- Clarity
- Insight

**Card Description:** When the Delusional card appears, it serves as a cautionary signal about the potential for self-deception or misperception in your life. This card invites you to examine the beliefs or narratives you may be holding onto that are not rooted in reality. It encourages you to seek clarity and confront any illusions that may be clouding your judgement or decision-making.

The Delusional card prompts you to take a step back and assess your situation with honesty. Are there patterns or habits that keep you from seeing the truth? This is an opportunity for self-reflection and introspection, allowing you to shed misconceptions and embrace a more authentic understanding of yourself and your circumstances.

**Guidance:** The Delusional card symbolises the need for awareness and honesty. Like a fog obscuring a path, you are encouraged to clear away the haze of illusions. Reflect on areas in your life where you may be avoiding the truth or holding onto unrealistic expectations. Seek feedback from trusted friends or mentors who can provide an outside perspective. Embrace the journey toward clarity, and don't shy away from difficult realisations. By acknowledging the truth, you can empower yourself to make more informed choices and move forward with confidence. Remember, facing reality can be a profound act of self-love and growth.



**Card Title: Frozen Heart**

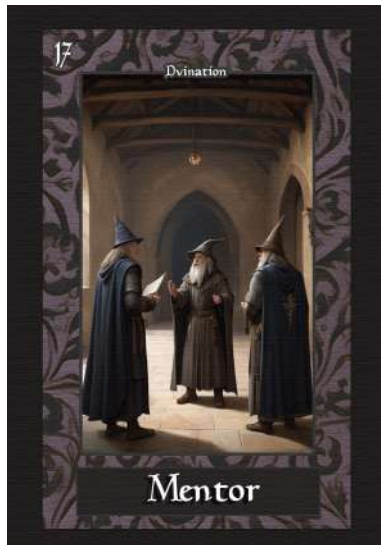
**Key Themes:**

- Emotional Blockage
- Fear of Vulnerability
- Isolation
- Healing
- Reconnection
- Un-Openness

**Card Description:** When the Frozen Heart card appears, it signifies emotional barriers and a sense of detachment in your life. This card represents the feelings of fear, hurt, or past trauma that may have caused you to close off your heart. It serves as a reminder to acknowledge these emotions and to recognize the impact they have on your relationships and overall well-being.

The Frozen Heart card encourages you to take steps toward healing and reconnection. It's time to thaw the icy walls you've built and allow warmth and compassion back into your life. Embrace vulnerability as a strength, and consider what it takes to open your heart again—whether it's through self-reflection, forgiveness, or seeking support from others.

**Guidance:** The Frozen Heart card symbolises the journey from isolation to connection. Like a flower blooming in spring, you are invited to nurture your emotional landscape and allow love to flow freely. Reflect on what has caused you to retreat emotionally and seek ways to address those feelings. Engage in practices that promote healing, such as journaling, meditation, or talking with trusted friends. Remember that vulnerability can lead to deeper relationships and a richer emotional life. Embrace the process of thawing your heart, and invite joy and love back into your experience. Healing is possible, and opening your heart can lead to profound transformations.



**Card Title: Mentor**

**Key Themes:**

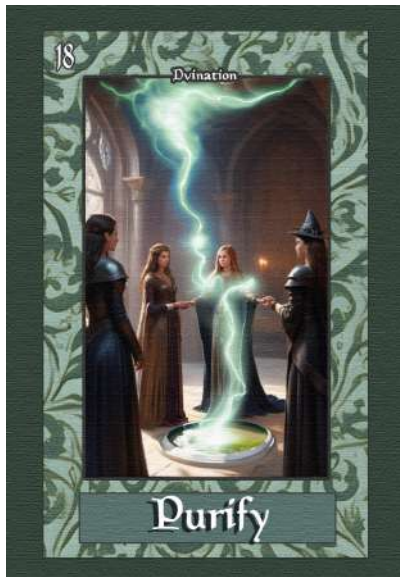
- Guidance
- Wisdom
- Support
- Growth
- Teaching
- Connection

**Card Description:** When the Mentor card appears, it signifies the presence of guidance and support in your journey. This card represents the importance of seeking wisdom from those who have walked a similar path and can offer valuable insights. Whether it's a formal relationship or a causal connection, a mentor can help illuminate your path and encourage your personal and professional growth.

The Mentor card invites you to be open to learning and to embrace the opportunities for development that come your way. Reflect on the qualities you admire in others and seek out individuals who embody those traits. Conversely, this card may also encourage you to step into the role of a mentor yourself, sharing your knowledge and experiences to uplift and support others.

**Guidance:** The Mentor card symbolises the dynamic relationship between teacher and student. Like a guide leading you through uncharted territory, you are encouraged to actively seek mentorship in your life. Look for opportunities to connect with those who inspire you, and don't hesitate to ask for advice or support. Additionally, consider how you can give back by mentoring someone else. Sharing your journey can create a powerful ripple effect of growth and understanding. Embrace the wisdom of both learning and teaching, and recognize that mentorship can enrich your life and the lives of those around you.





**Card Title: Purify**

**Key Themes:**

- Cleansing
- Release
- Renewal
- Clarity
- Fresh Start
- Healing

**Card Description:** When the Purify card appears, it signifies a powerful call for cleansing and renewal in your life. This card represents the need to release negativity, old patterns, or emotional baggage that no longer serve you. It's an invitation to create space for new energy, clarity, and growth.

The Purify card encourages you to engage in practices that promote healing and restoration. Whether it's through physical detox, emotional release, or spiritual cleansing, this is a time to focus on what nourishes and uplifts you. Embrace rituals that support your journey toward purity, allowing you to shed what weighs you down and step into a brighter, clearer version of yourself.

**Guidance:** The Purify card symbolises the importance of cleansing and renewal. Like a river flowing freely after a storm, you are encouraged to let go of what no longer serves your highest good. Reflect on areas in your life where you feel stagnant or burdened and identify what you can release. Engage in activities that promote clarity, such as meditation, journaling, or spending time in nature. Embrace the healing process and allow yourself to feel lighter and more vibrant. By purifying your mind, body, and spirit, you create the space for new beginnings and fresh opportunities to enter your life. Embrace this transformative journey with openness and intention.



**Card Title: Gratitude**

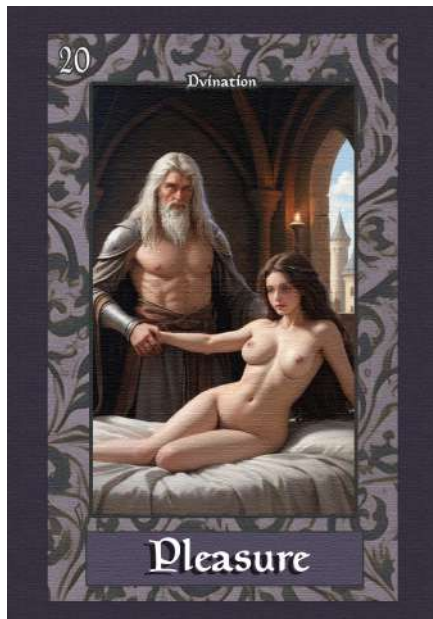
**Key Themes:**

- Appreciation
- Grateful from Help
- Mindfulness
- Connection
- Reflection

**Card Description:** When the Gratitude card appears, it signifies the power of appreciation and the importance of recognizing the blessings in your life. This card serves as a reminder to pause and reflect on what you are thankful for, cultivating a mindset of abundance rather than scarcity. Gratitude opens the door to deeper connections and enriches your overall well-being.

The Gratitude card encourages you to practise mindfulness and acknowledge the small moments of joy that often go unnoticed. By expressing gratitude, you invite positive energy and enhance your relationships with others. This is a time to celebrate the gifts life has offered you, whether they come in the form of people, experiences, or lessons learned.

**Guidance:** The Gratitude card symbolises the transformative power of appreciation. Like sunlight nurturing a garden, gratitude fosters growth and positivity in your life. Take time to reflect on the things you cherish, and consider keeping a gratitude journal to document your feelings. Share your appreciation with others, whether through kind words, acts of service, or simple gestures. Embrace the mindset of abundance, recognizing that what you focus on expands. By cultivating gratitude, you open yourself to a deeper sense of fulfilment and joy, enhancing your connections and enriching your journey. Embrace this practice, and watch as it brings more positivity into your life.



**Card Title: Pleasure**

**Key Themes:**

- Joy
- Satisfaction
- Indulgence
- Sensuality
- Self-Care / Leisure
- Pleasure

**Card Description:** When the Pleasure card appears, it signifies a time to embrace joy and indulge in the simple delights of life. This card encourages you to prioritise your own happiness and seek out experiences that bring you fulfilment and satisfaction. It's a reminder that pleasure is not just a luxury but an essential part of a balanced and vibrant life.

The Pleasure card invites you to explore what truly brings you joy, whether through physical sensations, creative pursuits, or moments of relaxation. It encourages you to engage in self-care practices that nourish your spirit and body. Celebrate the little things that make you smile, and don't shy away from enjoying life to its fullest.

**Guidance:** The Pleasure card symbolises the importance of joy and indulgence in your life. Like a feast for the senses, you are encouraged to seek out what makes you feel alive and fulfilled. Reflect on activities or experiences that bring you pleasure, and make time for them in your life. Embrace your senses—taste, touch, sight, sound, and smell—and allow yourself to fully engage with the world around you. Remember that pleasure can be found in both the grand and the mundane. By honouring your desires and celebrating the joy in your life, you cultivate a deeper connection to yourself and the world, enhancing your overall well-being. Embrace pleasure as a vital part of your journey.



**Card Title: Lament**

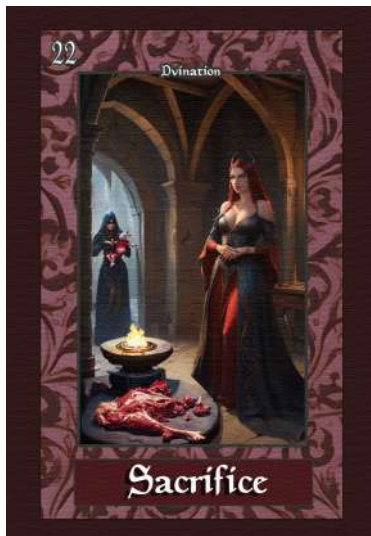
**Key Themes:**

- Grief
- Loss Expression
- Yearning
- Release
- Loss Reflection
- Acceptance

**Card Description:** When the Lament card appears, it signifies a time to acknowledge and express your feelings of grief or sorrow. This card invites you to confront your emotions rather than suppress them, allowing yourself to process loss, disappointment, or heartache. Lamenting is a natural part of the healing journey, and it opens the door to understanding and acceptance.

The Lament card encourages you to find safe ways to express your feelings, whether through journaling, art, or conversation. Embrace the power of vulnerability, as sharing your pain can lead to deeper connections and support from others. Remember that it's okay to grieve; honouring your emotions is an essential step toward healing.

**Guidance:** The Lament card symbolises the importance of acknowledging and processing grief. Like a river flowing through a valley, your emotions need space to be felt and released. Take time to reflect on what you need to mourn, whether it's a lost opportunity, a relationship, or a part of yourself. Allow yourself to feel the weight of these emotions and seek ways to express them authentically. This may involve seeking support from friends, family, or professionals who can help you navigate this process. By embracing your grief, you pave the way for healing and renewal, ultimately leading to a greater sense of acceptance and peace. Remember, it's through lamenting that we can begin to heal and find hope once again.



**Card Title: Sacrifice**

**Key Themes:**

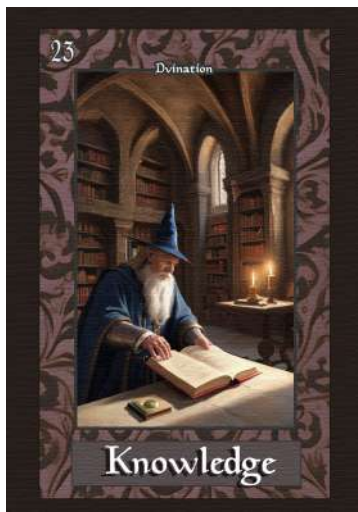
- Letting Go
- Commitment
- Transformation
- Growth
- Selflessness
- Trade & Exchange

**Card Description:** When the Sacrifice card appears, it signifies a time of letting go for the sake of a greater good or higher purpose. This card invites you to consider what you may need to relinquish—whether it's habits, relationships, or beliefs—to create space for growth and transformation. Sacrifice often requires courage, but it can lead to profound rewards.

The Sacrifice card encourages you to reflect on the commitments you are willing to make in pursuit of your goals or to support others. It's essential to find a balance between selflessness and self-care; while it's noble to make sacrifices, ensure that you're not losing yourself in the process. Understand that true sacrifice can be an act of love and a stepping stone toward greater fulfilment.

**Guidance:** The Sacrifice card symbolises the transformative power of letting go. Like a tree shedding its leaves to prepare for new growth, you are called to evaluate what no longer serves you. Reflect on areas in your life where sacrifice may lead to greater benefits, both for yourself and those around you. Consider what you can release to pave the way for new opportunities and experiences. Embrace this process with an open heart, recognizing that sacrifice is not about loss but about making way for something richer and more meaningful. Trust that your willingness to let go can lead to personal and spiritual growth, ultimately enhancing your journey.





**Card Title: Knowledge**

**Key Themes:**

- Wisdom
- Understanding
- Learning
- Insight
- Curiosity
- Empowerment

**Card Description:** When the Knowledge card appears, it signifies a time of growth and the pursuit of understanding. This card represents the importance of seeking knowledge, whether through formal education, personal experiences, or introspection. It encourages you to embrace curiosity and explore new ideas, as knowledge empowers you to navigate life's challenges with confidence.

The Knowledge card invites you to reflect on what you want to learn and how that knowledge can enhance your life. Consider seeking mentorship, engaging in study, or simply remaining open to the lessons that come your way. This is a time to expand your horizons and deepen your understanding of yourself and the world around you.

**Guidance:** The Knowledge card symbolises the transformative power of learning and wisdom. Like a lamp illuminating a dark room, knowledge brings clarity and insight. Take time to explore areas that intrigue you, and don't hesitate to ask questions or seek guidance. Engage in practices that promote growth, such as reading, attending workshops, or having meaningful conversations. Remember that knowledge is a lifelong journey; every experience has something to teach you. Embrace the pursuit of understanding as a path to empowerment, and allow the insights you gain to guide your choices and actions. By honouring your quest for knowledge, you enrich your life and those around you.



**Card Title: Responsibility**

**Key Themes:**

- Accountability
- Ownership
- Commitment
- Integrity
- Responsible
- Maturity

**Card Description:** When the Responsibility card appears, it signifies the importance of owning your actions and decisions. This card encourages you to reflect on your commitments and the impact they have on your life and the lives of others. Embracing responsibility is a sign of maturity and can lead to greater trust and respect in your relationships.

The Responsibility card invites you to take a proactive approach to your obligations, whether personal, professional, or communal. Recognize that accountability fosters growth and encourages you to learn from your experiences. By owning your responsibilities, you create a solid foundation for building meaningful connections and achieving your goals.

**Guidance:** The Responsibility card symbolises the power of accountability and integrity. Like a captain steering a ship, you are called to navigate your life with purpose and intention. Reflect on areas where you may need to take ownership, and consider how you can align your actions with your values. Embrace your commitments with enthusiasm, and don't hesitate to ask for help when needed. Remember that responsibility is not a burden but an opportunity for growth and empowerment. By honouring your responsibilities, you cultivate trust in yourself and others, paving the way for deeper connections and a more fulfilling life. Embrace this journey with courage and integrity.



**Card Title: Control**

**Key Themes:**

- Power
- Influence
- Discipline
- Boundaries
- Focus
- Manipulation
- Balance

**Card Description:** When the Control card appears, it signifies a strong urge to manage or direct your circumstances. This card encourages you to reflect on where you might be seeking control in your life and the implications of that desire. While having control can lead to discipline and focus, it can also manifest as manipulation or an unwillingness to adapt.

The Control card invites you to assess your approach to power and influence. Are you asserting your will in a way that serves your highest good, or are you clinging too tightly to outcomes? This is a time to find balance—understanding that while some situations require leadership and direction, others may benefit from letting go and allowing life to unfold naturally.

**Guidance:** The Control card symbolises the duality of power and the importance of balance. Like a conductor leading an orchestra, you are encouraged to harness your influence thoughtfully. Reflect on areas of your life where you feel the need to exert control and consider whether this is helping or hindering your progress. Embrace discipline and focus in your pursuits, but also be open to flexibility and change. Remember that true power comes from within, and sometimes, surrendering control can lead to greater peace and harmony. By navigating the complexities of control with awareness, you can create a more balanced and fulfilling life. Embrace this journey with both strength and grace.



**Card Title: Teamwork**

**Key Themes:**

- Collaboration
- Unity
- Support
- Shared Goals
- Mutual Communication
- Collective Strength
- Partnership

**Card Description:** When the Teamwork card appears, it signifies the power of collaboration and the importance of working together toward a common goal. This card highlights the value of unity and support, reminding you that great achievements are often the result of collective effort. Embrace the strengths and talents of those around you, as they can enhance your own capabilities.

The Teamwork card invites you to foster open communication and cooperation in your endeavours. Recognize that everyone brings unique skills and perspectives to the table, and leveraging these differences can lead to innovative solutions. This is a time to build strong connections and create a sense of community, both in personal and professional realms.

**Guidance:** The Teamwork card symbolises the essence of collaboration and shared purpose. Like a well-oiled machine, you are encouraged to engage with others and work toward mutual goals. Reflect on your current projects or relationships and consider how you can enhance teamwork. Embrace the spirit of cooperation, and don't hesitate to share responsibilities and celebrate successes together. Remember that teamwork requires trust and respect, so nurture these qualities in your interactions. By embracing collaboration, you can create a supportive environment that fosters growth, creativity, and collective achievement. Embrace this journey of unity and let the power of teamwork elevate your aspirations.



**Card Title: Journey**

**Key Themes:**

- Adventure
- Travel
- Growth
- Exploration
- Transition
- Discovery
- Purpose

**Card Description:** When the Journey card appears, it signifies a period of exploration and personal growth. This card invites you to embrace the adventure of life, recognizing that each step you take is part of a larger path. Whether you are embarking on a physical journey, a new project, or an inner quest, this is a time to remain open to the experiences and lessons that lie ahead.

The Journey card encourages you to reflect on your goals and aspirations, considering what you truly want to achieve. As you navigate this path, be mindful of the insights you gain along the way. Every experience—both challenging and uplifting—contributes to your growth and understanding of yourself and the world around you.

**Guidance:** The Journey card symbolises the ongoing adventure of life. Like a traveller setting off on a grand expedition, you are encouraged to approach this time with curiosity and courage. Reflect on where you are headed and the intentions you wish to set for this journey. Embrace the unknown, and remember that detours can lead to unexpected discoveries. Trust in your ability to adapt and learn from each experience. By honouring your journey, you cultivate a deeper connection to your purpose and the path you are meant to follow. Embrace the adventure ahead, and let it guide you toward new horizons and possibilities.





**Card Title: Prisoner**

**Key Themes:**

- Restriction
- Limitation
- Self-Imposed Barriers
- Awareness
- Lack of Freedom
- Unlock-Transformation

**Card Description:** When the Prisoner card appears, it signifies feelings of confinement or limitation in your life. This card invites you to reflect on the restrictions you may be experiencing—whether they are external circumstances or self-imposed beliefs. Recognizing these barriers is the first step toward reclaiming your freedom and empowering yourself.

The Prisoner card encourages you to examine the thoughts and patterns that may be holding you back. Are you feeling trapped by fears, doubts, or societal expectations? It's time to confront these limitations and explore the possibilities for breaking free. Embrace the idea that true liberation comes from within, and you have the power to reshape your reality.

**Guidance:** The Prisoner card symbolises the potential for transformation and the quest for freedom. Like a bird yearning to soar, you are encouraged to identify and challenge the constraints in your life. Reflect on what keeps you feeling trapped and consider practical steps to reclaim your power. Engage in practices that promote self-awareness, such as journaling, meditation, or seeking support from trusted friends or mentors. By acknowledging your feelings and addressing the barriers, you pave the way for healing and growth. Remember, you have the ability to break free and create a life that aligns with your true self. Embrace this journey toward liberation with courage and determination.



**Card Title: Shadow**

**Key Themes:**

- Unconscious
- Fear
- Hidden Aspects
- Mysterious
- Shadow Work
- Transformation

**Card Description:** When the Shadow card appears, it signifies the presence of unconscious fears or hidden aspects of yourself that may need attention. This card invites you to explore the parts of your psyche that you may have repressed or ignored. Acknowledging your shadow is essential for personal growth and healing, as it allows you to integrate all facets of your being.

The Shadow card encourages you to confront your fears and insecurities with compassion and understanding. Instead of shying away from what makes you uncomfortable, embrace it as an opportunity for transformation. By bringing these hidden aspects into the light, you can gain valuable insights and foster a deeper connection with yourself.

**Guidance:** The Shadow card symbolises the importance of acceptance and self-discovery. Like a darkened corner of a room waiting for illumination, your shadow contains both fears and untapped potential. Reflect on areas of your life where you feel resistance or discomfort, and consider what those feelings reveal about your inner self. Engage in practices that promote self-reflection, such as journaling, therapy, or meditation. By acknowledging your shadow, you create space for healing and personal growth. Remember, embracing your whole self—including the shadow—leads to a more authentic and empowered existence. Embrace this journey of self-discovery, and allow your shadow to guide you toward greater understanding and acceptance.



**Card Title: Escape**

**Key Themes:**

- Freedom
- Release
- Avoidance
- Adventure
- Transformation
- Self-Discovery
- Escaping

**Card Description:** When the Escape card appears, it signifies a longing for freedom or a desire to break free from current constraints. This card invites you to explore what you might be trying to avoid, whether it's responsibilities, emotions, or situations that feel overwhelming. While the desire to escape can be a natural response, it also encourages you to reflect on the deeper reasons behind this urge.

The Escape card encourages you to seek healthy outlets for your feelings and desires. Consider how you can channel this longing for freedom into positive actions that promote growth and self-discovery. This might involve taking a break, embarking on a new adventure, or simply allowing yourself time to breathe and reflect.

**Guidance:** The Escape card symbolises the dual nature of seeking freedom—both as a necessity for growth and as a potential form of avoidance. Like a bird breaking free from its cage, you are encouraged to embrace the opportunities for liberation in your life. Reflect on what areas feel stifling or restrictive, and consider what steps you can take to create space for yourself. Engage in activities that bring you joy and allow for exploration, whether through travel, creative expression, or personal reflection. Remember that true escape is not just about avoidance; it's about finding clarity and purpose in your journey. Embrace this time of self-discovery and let it lead you to greater freedom and fulfilment.



**Card Title: Authority**

**Key Themes:**

- Power
- Leadership
- Structure
- Responsibility
- Boundaries
- Respect
- Higher Position

**Card Description:** When the Authority card appears, it signifies the presence of power and leadership in your life. This card invites you to reflect on your relationship with authority—both in terms of how you assert your own power and how you respond to the authority of others. It encourages you to consider the balance between control and support, and how structure can serve your growth.

The Authority card reminds you of the importance of setting clear boundaries and taking responsibility for your actions. Whether you are in a position of leadership or navigating authority figures, approach these dynamics with integrity and respect. This is a time to harness your strengths and lead with confidence while remaining open to collaboration and guidance.

**Guidance:** The Authority card symbolises the dual nature of power and the importance of mindful leadership. Like a wise ruler guiding a kingdom, you are encouraged to embrace your leadership qualities while being aware of the responsibilities that come with them. Reflect on how you exercise authority in your life and consider how you can do so with compassion and fairness. Engage in practices that promote self-discipline and clarity in your intentions. Remember that true authority is rooted in respect and understanding. By embodying these principles, you can create a positive impact on yourself and those around you. Embrace this journey of leadership, and let it empower you to foster growth and harmony.



**Card Title: Unknown**

**Key Themes:**

- Mystery
- Exploration
- Uncertainty
- Possibility
- Intuition
- Growth
- Vague

**Card Description:** When the Unknown card appears, it signifies a time of mystery and the potential for new beginnings. This card invites you to embrace the uncertainties in your life and approach them with an open mind. While the unknown can feel daunting, it also holds the promise of adventure, growth, and discovery.

The Unknown card encourages you to trust your intuition as you navigate uncharted territory. Rather than fearing what lies ahead, consider the possibilities and opportunities that come with stepping into the unknown. This is a time to let go of the need for certainty and allow yourself to be guided by your instincts and inner wisdom.

**Guidance:** The Unknown card symbolises the transformative power of embracing uncertainty. Like a traveller venturing into new lands, you are encouraged to approach the unknown with curiosity and courage. Reflect on what aspects of your life feel uncertain and consider how you can find comfort in that ambiguity. Engage in practices that foster exploration, such as trying new experiences, asking questions, or pursuing interests that intrigue you. Remember that the unknown can lead to profound insights and growth. By welcoming this journey, you open yourself to new possibilities and enrich your understanding of yourself and the world around you. Embrace the adventure that lies ahead, and let the unknown guide you to new horizons.





**Card Title: Peaceful**

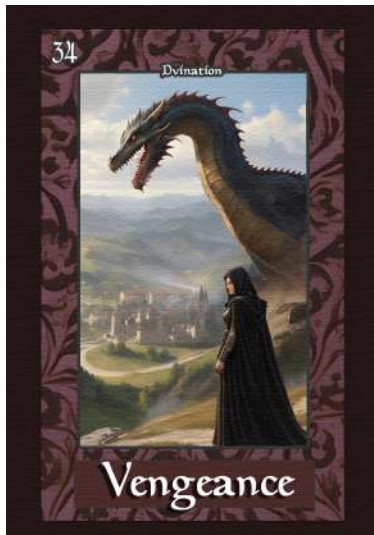
**Key Themes:**

- Tranquility
- Harmony
- Contentment
- Inner Calm
- Mindfulness
- Balance
- Peace

**Card Description:** When the Peaceful card appears, it signifies a time of tranquility and inner calm. This card invites you to cultivate a sense of peace within yourself and your surroundings. It's a reminder to seek harmony in your life, fostering a balanced approach to your thoughts, emotions, and relationships.

The Peaceful card encourages you to embrace mindfulness and engage in practices that promote serenity. Whether through meditation, nature walks, or quiet reflection, prioritise moments that allow you to connect with your inner self. This is a time to let go of stress and embrace the soothing energies that promote well-being.

**Guidance:** The Peaceful card symbolises the importance of finding calm amidst life's chaos. Like a still lake reflecting the sky, you are encouraged to nurture your inner tranquillity. Reflect on areas in your life where you can invite more peace, whether it's setting boundaries, simplifying commitments, or creating a serene environment. Engage in activities that bring you joy and relaxation, and don't hesitate to disconnect from distractions. Remember that peace is both a state of mind and a way of being. By cultivating a peaceful presence, you not only enhance your own well-being but also create a positive ripple effect in your relationships and community. Embrace this journey toward serenity, and allow it to enrich your life.



**Card Title: Vengeance**

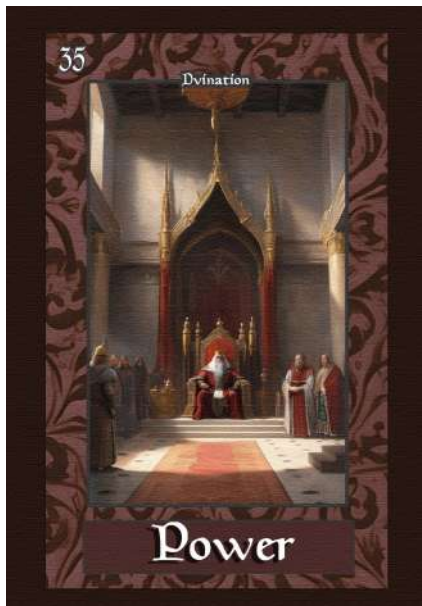
**Key Themes:**

- Retribution
- Anger
- Resentment
- Unhealed
- Unrelease
- Revenge

**Card Description:** When the Vengeance card appears, it signifies the presence of anger or a desire for retribution. This card invites you to explore feelings of resentment or injustice that may be weighing on your heart. While these emotions are natural responses to hurt, clinging to the desire for vengeance can hinder your healing and personal growth.

The Vengeance card encourages you to reflect on the sources of your anger and consider how you can transform these feelings into something more constructive. Instead of seeking revenge, explore ways to release your pain and find closure. Embracing forgiveness—whether toward yourself or others—can pave the way for emotional freedom and a renewed sense of peace.

**Guidance:** The Vengeance card symbolises the struggle between anger and healing. Like a storm that eventually passes, your feelings of vengeance can be acknowledged and transformed. Reflect on what has caused you to feel this way, and consider the impact of holding onto these emotions. Engage in practices that promote healing, such as journaling, talking to a trusted friend, or seeking professional support. Remember that true empowerment comes from releasing the need for revenge and choosing forgiveness instead. By letting go of vengeance, you open the door to greater emotional clarity and peace. Embrace this journey of transformation, and allow yourself to heal and move forward.



**Card Title: Power**

**Key Themes:**

- Strength
- Empowerment
- Confidence
- Influence
- Responsibility
- Authenticity
- Power

**Card Description:** When the Power card appears, it signifies a strong sense of personal strength and empowerment. This card invites you to recognize and embrace your innate abilities and the influence you have over your life and circumstances. It's a reminder that true power comes from within and is rooted in authenticity and self-awareness.

The Power card encourages you to stand confidently in your truth and take responsibility for your actions. Harness your strengths and use them to create positive change in your life and the lives of others. This is a time to assert yourself and pursue your goals with determination and clarity.

**Guidance:** The Power card symbolises the importance of embracing your personal strength and influence. Like a lioness commanding her pride, you are encouraged to recognize your capabilities and the impact you can have. Reflect on what power means to you and how you can channel it constructively. Engage in practices that boost your confidence, such as setting goals, affirmations, or stepping outside your comfort zone. Remember that with power comes responsibility; use your influence wisely and ethically. By embracing your power, you not only enhance your own life but also inspire those around you. Embrace this journey of empowerment, and let your true strength shine.



**Card Title: Supreme**

**Key Themes:**

- Excellence
- Mastery
- Highest Potential
- Confidence
- Leadership
- Transcendence
- Ego

**Card Description:** When the Supreme card appears, it signifies the elevation to a state of excellence and mastery. This card invites you to acknowledge your highest potential and the greatness within you. It encourages you to strive for your best, embracing the qualities that set you apart and allow you to shine.

The Supreme card inspires you to take on a leadership role in your life, guiding others with your vision and confidence. It's a reminder that you have the ability to transcend limitations and rise to the occasion, tapping into your inner wisdom and strength. This is a time to embrace your unique gifts and showcase them to the world.

**Guidance:** The Supreme card symbolises the pursuit of excellence and self-realisation. Like a majestic eagle soaring above the mountains, you are encouraged to rise above challenges and embrace your true potential. Reflect on what areas of your life you wish to elevate, and set intentions to pursue mastery in those fields. Engage in practices that foster growth, such as continuous learning, mentorship, or setting ambitious goals. Remember that greatness is a journey, not a destination; celebrate your progress along the way. By embodying the qualities of the Supreme, you inspire not only yourself but also those around you to reach for their highest potential. Embrace this journey with confidence and purpose, and let your greatness shine.



**Card Title: Mission**

**Key Themes:**

- Mission
- Purpose
- Vision
- Commitment
- Action
- Target

**Card Description:** When the Mission card appears, it signifies a strong sense of purpose and the call to pursue your life's work. This card invites you to reflect on your personal mission—what drives you, what you are passionate about, and how you wish to contribute to the world. It's a reminder that fulfilling your mission can bring deep satisfaction and fulfilment.

The Mission card encourages you to take committed action toward your goals. Whether through your career, creative pursuits, or acts of service, this is a time to align your actions with your values and vision. Embrace the inspiration that comes from pursuing your mission and recognize the positive impact you can have on others.

**Guidance:** The Mission card symbolises the journey of discovering and embracing your purpose. Like a lighthouse guiding ships to shore, you are encouraged to shine your light and share your vision with the world. Reflect on what truly matters to you and how you can take steps toward fulfilling your mission. Engage in activities that nurture your passions and connect you with like-minded individuals. Remember that your mission is not only about personal achievement but also about serving others and making a difference. By committing to your purpose, you inspire not only yourself but also those around you. Embrace this journey with determination and clarity, and let your mission guide you toward a meaningful life.





**Card Title: Challenge**

**Key Themes:**

- Growth
- Resilience
- Obstacles
- Perseverance
- Learning
- Transformation

**Card Description:** When the Challenge card appears, it signifies the presence of obstacles or difficulties that may be testing your resolve. This card invites you to view challenges as opportunities for growth and transformation. While facing difficulties can be daunting, they often lead to valuable lessons and deeper self-awareness.

The Challenge card encourages you to embrace resilience and perseverance. Reflect on how you can navigate these obstacles with grace and determination. Remember that overcoming challenges can strengthen your character and build your confidence, allowing you to emerge stronger on the other side.

**Guidance:** The Challenge card symbolises the journey through adversity and the potential for personal growth. Like a mountain climber facing steep terrain, you are encouraged to confront your challenges head-on. Reflect on what obstacles you are currently facing and consider how they may be shaping you. Engage in practices that promote resilience, such as positive self-talk, seeking support, or reframing your perspective. Remember that every challenge holds the potential for growth and transformation. By facing difficulties with courage and determination, you can unlock new strengths within yourself. Embrace this journey, and let the challenges you encounter guide you toward greater understanding and achievement.



**Card Title: Undead**

**Key Themes:**

- Resilience
- Trauma
- Unfinished Business
- Dead-idea
- Unacceptance
- Not Letting Go

**Card Description:** When the Undead card appears, it signifies lingering issues or aspects of your life that have not fully resolved. This card invites you to confront what feels stuck or incomplete, urging you to address any unfinished business that may be holding you back. The energy of the undead reminds you that while some things may seem dormant, they still require attention for true transformation.

The Undead card encourages you to embrace the process of healing and renewal. Rather than avoiding these lingering issues, face them with courage and compassion. Acknowledging what needs to be released or transformed can lead to a powerful rebirth, allowing you to move forward with clarity and purpose.

**Guidance:** The Undead card symbolises the importance of addressing unresolved matters and embracing transformation. Like a phoenix rising from the ashes, you have the power to renew and revitalise your life. Reflect on what aspects of your past or present feel stagnant or unhealed, and consider how you can bring closure to these issues. Engage in practices that promote healing, such as therapy, journaling, or ritual. Remember that confronting the undead aspects of your life can lead to profound insights and growth. By embracing this journey of renewal, you create space for new possibilities and a brighter future. Let go of what no longer serves you, and allow yourself to transform.



**Card Title:** Focus

**Key Themes:**

- Concentration
- Clarity
- Intentionality
- Focus
- Determination
- Direction

**Card Description:** When the Focus card appears, it signifies the importance of clarity and intentionality in your pursuits. This card invites you to hone in on your goals and priorities, urging you to eliminate distractions and channel your energy effectively. Achieving your aspirations requires a clear vision and unwavering concentration.

The Focus card encourages you to cultivate mindfulness and present-moment awareness. By tuning into what truly matters, you can make more informed decisions and take purposeful actions. This is a time to set clear intentions and align your efforts with your desired outcomes.

**Guidance:** The Focus card symbolises the power of concentration and clarity in manifesting your goals. Like an archer aiming for the bullseye, you are encouraged to direct your energy with precision. Reflect on your current objectives and consider what steps you can take to enhance your focus. Engage in practices that promote concentration, such as meditation, creating to-do lists, or setting specific goals. Remember that true focus requires discipline and the ability to let go of distractions. By embracing this journey of clarity and intentionality, you can make significant progress toward your aspirations. Allow your focus to guide you, illuminating the path to success and fulfilment.



**Card Title: Miracle**

**Key Themes:**

- Blessings
- Unexpected
- Divine Intervention
- Hope
- Miracle

**Card Description:** When the Miracle card appears, it signifies the presence of unexpected blessings and transformative moments in your life. This card invites you to open your heart to the possibility of miracles, reminding you that extraordinary changes can happen when you least expect them. Embrace the magic of life and recognize the beauty in the little things.

The Miracle card encourages you to cultivate gratitude and remain hopeful, even in challenging times. Miracles often arise from moments of vulnerability or surrender, teaching us to trust in the flow of life. This is a time to be receptive to new opportunities and experiences that can lead to profound transformation.

**Guidance:** The Miracle card symbolises the magic that can unfold when you remain open to the extraordinary. Like a sudden burst of light in a dark room, miracles can illuminate your path and bring joy. Reflect on the areas of your life where you wish to invite more magic and consider how you can cultivate a mindset of gratitude and openness. Engage in practices that enhance your awareness, such as mindfulness, journaling, or acts of kindness. Remember that miracles often come when you least expect them, so stay alert and ready to receive. By embracing this journey of wonder and gratitude, you invite more miracles into your life, enriching your experiences and deepening your sense of connection to the world.



**Card Title: Rest**

**Key Themes:**

- Renewal
- Self-Care
- Rejuvenation
- Mindfulness
- Rest

**Card Description:** When the Rest card appears, it signifies the essential need for rejuvenation and self-care. This card invites you to pause, reflect, and recharge your energies. In our fast-paced world, it's easy to overlook the importance of rest, but taking time for yourself is vital for maintaining balance and well-being.

The Rest card encourages you to listen to your body and mind, recognizing when it's time to step back and allow for healing and renewal. This is a moment to prioritise your well-being and create space for reflection, creativity, and inner peace.

**Guidance:** The Rest card symbolises the power of taking a break to restore your energy and clarity. Like a flower that blooms after a period of dormancy, you too can thrive when you give yourself permission to rest. Reflect on your current pace and consider where you might need to slow down or take a step back. Engage in practices that promote relaxation, such as meditation, gentle movement, or spending time in nature. Remember that rest is not a sign of weakness but a vital component of growth and resilience. By honoring your need for rest, you create a stronger foundation for pursuing your goals and nurturing your well-being. Embrace this time of renewal, and allow yourself to recharge fully.





**Card Title: Death**

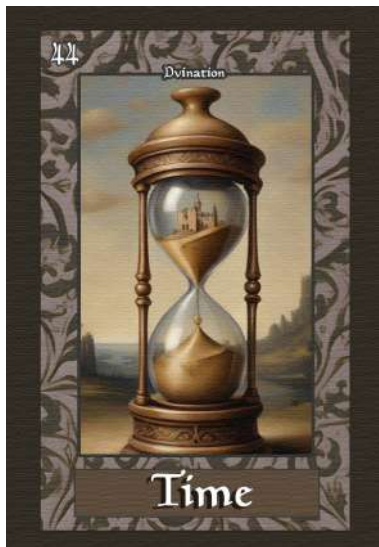
**Key Themes:**

- Final Chapter
- Endings
- New Beginnings
- Letting Go
- Rebirth
- Renewal

**Card Description:** When the Death card appears, it signifies the end of a cycle and the opportunity for profound transformation. This card invites you to embrace change and recognize that endings often pave the way for new beginnings. While the concept of death can evoke fear, it is also a powerful symbol of rebirth and renewal.

The Death card encourages you to let go of what no longer serves you, whether it's habits, relationships, or outdated beliefs. Embracing this natural process can lead to personal growth and a fresh perspective. It's a reminder that every ending carries the potential for a new beginning.

**Guidance:** The Death card symbolises the cycle of life and the importance of embracing change. Like a caterpillar transforming into a butterfly, you are encouraged to welcome the shifts in your life with openness and acceptance. Reflect on what aspects of your life may need to come to an end in order for new opportunities to arise. Engage in practices that promote letting go, such as journaling, rituals, or meditation. Remember that transformation can be both challenging and beautiful; honour your feelings throughout this process. By embracing the lessons of death, you can unlock the potential for renewal and a more authentic way of being. Embrace this journey of transformation, and allow it to guide you toward a brighter future.



**Card Title:** Time

**Key Themes:**

- Patience
- Cycles
- Reflection
- Present Moment
- Planning
- Change
- Divine Timing

**Card Description:** When the Time card appears, it signifies the significance of timing in your life's journey. This card invites you to reflect on the natural cycles of life and the importance of patience. It serves as a reminder that everything unfolds in its own time, and rushing can lead to missed opportunities or unnecessary stress.

The Time card encourages you to be present and mindful, recognizing that each moment has its own value and lessons. Whether you are waiting for something to manifest or contemplating the past, this is a time to embrace the flow of time and trust in the process of life.

**Guidance:** The Time card symbolises the importance of being in harmony with the natural rhythms of life. Like the changing seasons, you are encouraged to honour the cycles of growth, rest, and renewal. Reflect on where you might be feeling impatience or pressure and consider how you can cultivate a greater sense of acceptance. Engage in practices that promote mindfulness, such as meditation, deep breathing, or spending time in nature. Remember that the present moment holds its own magic and opportunities for growth. By embracing the essence of time, you can navigate your journey with grace and clarity. Allow yourself to flow with the rhythms of life, and trust that everything happens at the right moment.

# The End.

Artwork by Irina Lilith & Dvination

More information please visit our website

[www.Dvination.com](http://www.Dvination.com)

