



Medieval Romance - Love & Lust Oracle

-Guidebook-

Card Title: Deception

Key Themes: Illusion, Unveiling the Truth, Trust, Intuition

Card Description:

The "Deception" card appears as a reminder that not everything is as it seems. It prompts you to look beyond the surface and question the authenticity of situations or relationships in your life. The imagery on the card may depict veils being lifted or masks being removed, symbolising a revelation of the truth.



Questioning Perceptions: This card urges you to question your assumptions and perceptions. What may appear straightforward could have hidden layers. Be open to seeing things from a different perspective.

Unveiling Truth: Embrace a quest for truth and transparency. It's a time to uncover hidden motives, secrets, or illusions that might be clouding your judgement. Face realities with courage and honesty.

Trust Your Intuition: In situations where trust is crucial, rely on your intuition. Your inner wisdom may guide you to discern between genuine intentions and deceitful motives. Tune into your instincts to navigate uncertainty.

Reassess Relationships: Reflect on your connections with others. Are there any dynamics that feel deceptive or unclear? This card encourages you to address any issues of trust or dishonesty in relationships.

Personal Integrity: Consider your own actions and motivations. Ensure that you are honest and true to yourself. Sometimes, the "Deception" card invites self-reflection and a commitment to authenticity in your own life.

Guidance: Approach situations with a discerning eye, but also with an open heart. Use this time to seek clarity, foster genuine connections, and align yourself with the truth. Trust in your ability to navigate through illusions, and remember that uncovering the truth can lead to personal growth and positive transformation.



Card Title: Compass

Key Themes: Guidance, Direction, Navigation, Inner Wisdom

Card Description:

The "Compass" card symbolises a guiding force in your life, much like a compass that points the way. It may depict a literal compass or use symbolic imagery to convey the idea of finding direction and purpose.

Inner Guidance: This card signifies that you have an internal compass, a source of wisdom within. Trust your instincts and intuition to navigate through life's journey. The answers you seek may already reside within you.

Finding Purpose: Embrace a quest for purpose and direction. The "Compass" card suggests that you are on a path towards discovering your true calling or understanding the next steps in your journey.

Course Correction: If you've been feeling lost or uncertain, now is the time to make adjustments. Assess your current direction and make necessary course corrections to align with your authentic self and goals.

Spiritual Connection: The card may also allude to a spiritual or metaphysical guidance. Pay attention to signs, synchronicities, or messages from the universe that may be leading you in a particular direction.

Navigating Challenges: Just as a compass helps you navigate rough terrain, this card encourages you to face challenges with resilience and trust. Your inner compass will guide you through difficult times.

Guidance: Tune in to your inner wisdom and trust the guidance it provides. Take time for introspection, and consider the direction you want to take in various aspects of your life. The "Compass" card invites you to embrace the journey, knowing that you are guided and supported on your path.



Card Title: Affection

Key Themes: Love, Connection, Emotional Bonds, Compassion

Card Description:

The "Affection" card radiates warmth and tenderness, symbolising the power of love and emotional connection. It may feature images of embracing figures, hearts, or other symbols associated with affectionate relationships.

Deep Emotional Bonds: The "Affection" card celebrates the importance of emotional connections in your life. It may signify deepening bonds with loved ones, family, friends, or even the nurturing of self-love.

Expressing Love: This card encourages you to express love openly and sincerely. Whether through words, actions, or gestures, take the time to show affection and appreciation to those who matter most.

Nurturing Relationships: Focus on nurturing the relationships that bring joy and fulfilment. The "Affection" card may suggest a need for attention to loved ones and the cultivation of an environment where affection can flourish.

Self-Love: Don't forget the importance of self-love. The card may also indicate a time for self-care and self-compassion. Embrace your own worth and treat yourself with the same affection you offer to others.

Healing through Connection: Affection has the power to heal. If you've been going through challenging times, this card may signal a period of emotional healing and support through the love and affection of those around you.

Guidance: Embrace the power of love in all its forms. Take time to appreciate the meaningful connections in your life and reciprocate the affection you receive. Whether it's through romantic relationships, friendships, or self-love, allow affection to be a guiding force in your journey.



Card Title: Submission

Key Themes: Surrender, Release, Acceptance, Trust

Card Description:

The "Submission" card invites you to explore the power of surrender and acceptance. It may depict imagery of letting go of ego, yielding, or finding strength in relinquishing control.

Surrendering Control: The essence of this card is in surrendering to the natural flow of life. It suggests that there are situations where attempting to control outcomes may be counterproductive. Consider letting go and allowing things to unfold organically.

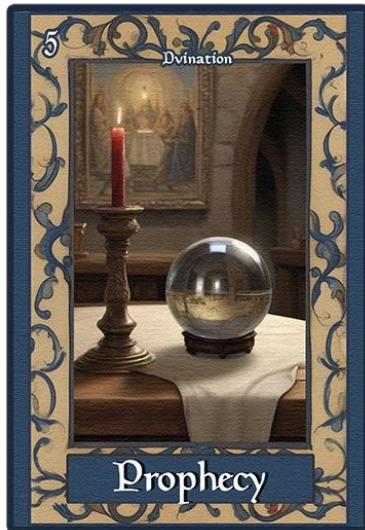
Release and Liberation: Submission doesn't imply weakness; instead, it can be a source of liberation. The card may encourage you to release burdens, expectations, or aspects of your life that no longer serve your highest good.

Trust in the Process: Trust that there is a larger plan at play. The "Submission" card invites you to trust in the wisdom of the universe, acknowledging that sometimes surrendering to the unknown can lead to unexpected blessings and opportunities.

Embracing Change: If you've been resisting change, this card encourages you to embrace it. Submission in this context can be about adapting to transitions and trusting that, even in uncertainty, there is potential for growth and positive transformation.

Spiritual Surrender: The card may also suggest a spiritual surrender, inviting you to connect with a higher power or your own spiritual beliefs. Find solace in relinquishing worries and placing trust in a higher guidance.

Guidance: Reflect on areas in your life where resistance may be causing unnecessary stress. Consider where surrendering and accepting the present moment could bring peace and allow positive energy to flow. The "Submission" card is an invitation to trust, let go, and find strength in surrender.



Card Title: Prophecy

Key Themes: Insight, Foreseeing, Guidance, Intuition

Card Description:

The "Prophecy" card holds the energy of foresight and intuition, suggesting a connection to deeper wisdom and a glimpse into the future. It may feature symbols of divination, mysticism, or images that evoke a sense of the prophetic.

Intuitive Wisdom: The "Prophecy" card encourages you to tap into your intuitive abilities. Trust the subtle insights and inner knowing that guide you. Pay attention to your instincts and the messages your inner self is trying to convey.

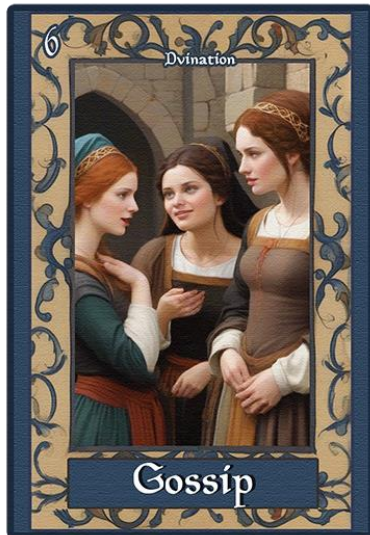
Foreseeing Opportunities: This card may signal a time of heightened awareness, where you can see opportunities or challenges before they fully manifest. Use this foresight to make informed decisions and navigate your path with greater clarity.

Spiritual Guidance: Consider the possibility of receiving guidance from spiritual realms or higher sources. The "Prophecy" card may suggest that you are being guided by forces beyond the physical, offering wisdom and insights to help you on your journey.

Honouring Intuitive Dreams: If you've been experiencing vivid dreams or intuitive flashes, the "Prophecy" card invites you to explore and honor these messages. Your dreams and subtle perceptions may hold valuable information about your path.

Embracing Change: The card may also indicate a period of transformation and change based on the guidance you receive. Embrace the shifts with an open heart, knowing that they align with a higher purpose.

Guidance: Pay attention to the signs and symbols around you. Trust your intuitive senses and be open to receiving guidance from unexpected sources. The "Prophecy" card suggests that you are in tune with a deeper wisdom, providing you with the foresight needed to navigate your journey.



Card Title: Gossip

Key Themes: Communication, Perception, Caution, Discernment

Card Description:

The "Gossip" card addresses the impact of communication, rumours, and the power of words. It may depict symbols related to conversation, whispers, or elements representing the influence of information on relationships and situations.

Communication Influence: The "Gossip" card highlights the significance of communication in your life. It suggests that words and information, whether true or not, may have a profound impact on your experiences and relationships.

Perception and Discernment: This card encourages you to be mindful of how you perceive and interpret information. Not everything you hear may be accurate, and it's crucial to exercise discernment before accepting or spreading information.

Caution in Relationships: Be cautious about the influence of gossip in your relationships. Misunderstandings and miscommunications may arise, leading to unnecessary conflicts. Take the time to clarify information and approach situations with an open and understanding mindset.

Guarding Reputation: The "Gossip" card may signal a need to protect your reputation or address any false information circulating about you. Consider the impact of your words on others, and be proactive in clarifying any misunderstandings.

Promoting Positive Communication: Use this card as a reminder to promote positive and constructive communication. Encourage open dialogue, honesty, and transparency in your interactions with others to foster a healthy and supportive environment.

Guidance: Be mindful of the information you receive and share. Strive for clear communication, and if confronted with gossip or rumours, approach the situation with diplomacy and a commitment to understanding the truth. The "Gossip" card invites you to navigate the realm of communication with wisdom and discernment.



Card Title: Destruction

Key Themes: Upheaval, Chaos, Loss, Caution

Card Description:

The "Destruction" card conveys a warning about potential upheaval and challenges. It may depict symbols of chaos, crumbling foundations, or elements representing the breaking down of established structures.

Unforeseen Challenges: The "Destruction" card signals a period of unexpected challenges and upheaval in your life. Be prepared for disruptions that may test your resilience and adaptability.

Loss and Disarray: This card suggests potential losses, whether in relationships, projects, or other aspects of your life. Brace yourself for periods of disarray and the need to navigate through uncertainty.

Warning of Change: Consider the destruction depicted on the card as a warning sign. It encourages you to assess your current situations and relationships, identifying areas that may be vulnerable to instability or breakdown.

Caution in Decision-Making: Exercise caution in your decision-making processes. The "Destruction" card warns against hasty actions that could contribute to the destabilisation of your current circumstances.

Navigating Turbulence: If faced with challenges, this card urges you to approach them with caution and a strategic mindset. Brace yourself for potential setbacks and be prepared to adapt to changing circumstances.

Guidance: The "Destruction" card serves as a cautionary signal. Be vigilant in your choices, anticipate potential difficulties, and take steps to fortify areas of your life that may be vulnerable to disruption. While negative in nature, view this card as an opportunity to strengthen your resilience and navigate challenges with careful consideration.



Card Title: Gambling

Key Themes: Risk, Uncertainty, Choices, Caution

Card Description:

The "Gambling" card symbolises the unpredictable nature of risk and chance. It may depict imagery related to games of chance, such as cards, dice, or other symbols representing the unpredictable outcomes associated with taking risks.

Risk and Opportunity: The "Gambling" card suggests that you are in a situation where risk and opportunity are intertwined. Consider the potential rewards and consequences of your choices, recognizing that not all outcomes are guaranteed.

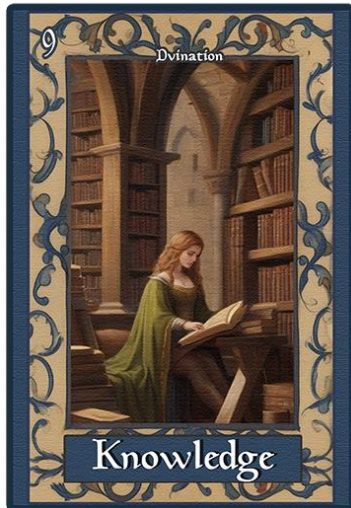
Uncertainty in Decisions: This card highlights a period of uncertainty in decision-making. It encourages you to carefully weigh your options, acknowledging that some choices may involve an element of chance and unpredictability.

Caution in Ventures: Approach new ventures with caution. Whether in relationships, career, or personal pursuits, be aware of the potential for unforeseen challenges. The "Gambling" card advises you to make informed decisions rather than relying solely on luck.

Balancing Risk and Reward: Evaluate the balance between risk and reward in your current situation. Consider whether the potential gains are worth the uncertainties involved, and be mindful of the consequences of impulsive or reckless behaviour.

Learning from Experience: If you have experienced setbacks or losses, the "Gambling" card invites you to learn from these experiences. Use them as lessons to refine your approach to risk and make more informed choices in the future.

Guidance: Embrace a thoughtful and calculated approach to risk-taking. While the "Gambling" card acknowledges the presence of uncertainty, it also encourages you to make choices with a mindful awareness of the potential outcomes. Navigate the unpredictable nature of life's gambles with prudence and consideration.



Card Title: Knowledge

Key Themes: Wisdom, Insight, Learning, Illumination

Card Description:

The "Knowledge" card embodies the pursuit of wisdom and the illumination that comes with understanding. It may feature symbols associated with learning, books, or imagery that conveys the transformative power of knowledge.

Seeking Wisdom: The "Knowledge" card signals a period of seeking wisdom and deeper understanding. It encourages you to explore new information, engage in learning experiences, and seek answers to questions that have been on your mind.

Spiritual Enlightenment: This card may indicate a quest for spiritual or self-awareness. It encourages you to delve into spiritual practices, meditation, or introspection to gain profound insights and illumination.

Intellectual Growth: Embrace opportunities for intellectual growth and expansion of your skills. Whether through formal education or personal pursuits, the "Knowledge" card suggests that you are in a phase of acquiring new skills and expertise.

Teaching and Sharing: If you have acquired knowledge, consider sharing it with others. This card may signify a role as a mentor, teacher, or guide, using your wisdom to illuminate the paths of those around you.

Clarity and Understanding: The "Knowledge" card heralds a time of clarity and understanding. It suggests that the information you seek or receive will bring light to previously unclear situations, allowing you to make informed decisions.

Guidance: Embrace the pursuit of knowledge and wisdom as a transformative journey. Whether you're seeking personal enlightenment or sharing your insights with others, the "Knowledge" card invites you to recognize the power of understanding and the positive impact it can have on your life and the lives of those around you.



Card Title: Prayer

Key Themes: Spirituality, Connection, Guidance, Reflection

Card Description:

The "Prayer" card symbolises a moment of spiritual connection, contemplation, and seeking guidance. It may depict images of hands in prayer, sacred symbols, or other representations of the meditative and reflective nature of prayer.

Spiritual Connection: The "Prayer" card invites you to connect with your spiritual essence. It signals a time to seek solace, guidance, and support from the divine or the higher power you resonate with.

Reflective Pause: Embrace a moment of reflection and introspection. This card suggests that taking a pause for prayer allows you to gain clarity, find inner peace, and tap into a source of strength beyond the material world.

Seeking Guidance: Use prayer as a tool for seeking guidance and wisdom. Whether facing challenges or making decisions, the "Prayer" card encourages you to turn inward and ask for divine assistance in navigating life's journey.

Expressing Gratitude: Prayer isn't solely about seeking help; it's also a way to express gratitude. Take time to acknowledge and appreciate the blessings in your life, fostering a sense of gratitude and contentment.

Community and Unity: The "Prayer" card may also signify the power of communal prayer or shared spiritual experiences. Consider joining with others in prayer, creating a sense of unity and shared intention.

Guidance: Embrace the sacred and transformative nature of prayer. Whether through traditional religious practices or personal spiritual rituals, the "Prayer" card invites you to connect with the divine, find inner peace, and seek guidance as you navigate the complexities of life.



Card Title: Dark Magic

Key Themes: Beware, Manipulation, Hidden Agendas, Consequences, Evil Eyes

Card Description:

The "Dark Magic" card warns of the presence of negative energies and potential pitfalls. It may feature symbols associated with occultism or imagery that conveys a sense of manipulation, hidden agendas, and the consequences of delving into darker aspects.

Manipulative Forces: The "Dark Magic" card signifies the presence of manipulative forces in your life. Be wary of individuals or situations that may seek to control or influence you for their own gain.

Hidden Agendas: This card warns of hidden agendas and deceitful motives. Stay vigilant and question the intentions behind actions or offers that seem too good to be true.

Consequences of Unethical Practices: If you are involved in any practices that could be considered ethically questionable or manipulative, the "Dark Magic" card urges you to reconsider. Actions taken with harmful intent may have severe consequences.

Unveiling Negative Truths: Be prepared for unsettling revelations. The "Dark Magic" card suggests that the truth may emerge, revealing darker aspects of situations or relationships that you were unaware of.

Caution in Spirituality: If you engage in spiritual practices, be cautious about the energies you are invoking. The "Dark Magic" card advises against delving into occultism without proper understanding and ethical considerations.

Guidance: Approach the energies associated with "Dark Magic" with extreme caution. This card serves as a warning to stay vigilant against deceit, manipulation, and negative influences. Evaluate your actions and relationships, ensuring that your choices align with ethical principles to avoid potential harm or consequences.



Card Title: Time

Key Themes: Patience, Timing, Cycles, Opportunities

Card Description:

The "Time" card embodies the essence of temporal flow and the cyclical nature of life. It may feature symbols representing clocks, hourglasses, or imagery that signifies the importance of timing and the unfolding of events.

Patience and Waiting: The "Time" card suggests a period of patience and waiting. It prompts you to understand that certain events and developments in your life are subject to the natural rhythm of time. Exercise patience as things unfold.

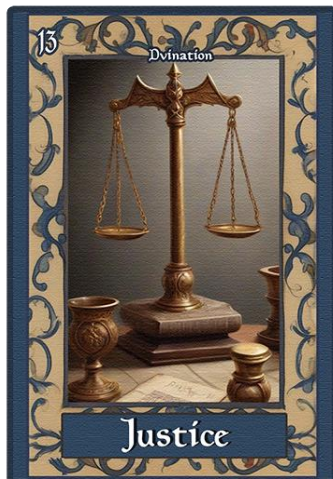
Timing is Crucial: Recognize the significance of timing in your endeavours. This card encourages you to be mindful of the opportunities presented to you and to act when the timing is most favourable for success.

Cycles of Life: Embrace the understanding that life unfolds in cycles. The "Time" card signifies that certain phases must come to an end for new beginnings to emerge. Reflect on the cyclical nature of your experiences and growth.

Seizing Opportunities: Be aware of the opportunities that time brings. This card prompts you to be proactive in recognizing and seizing the right moments to pursue your goals and aspirations.

Reflection and Review: The "Time" card may suggest a period of reflection and review. Take the time to assess your progress, learn from past experiences, and make informed decisions as you navigate your journey.

Guidance: The "Time" card serves as a reminder that, like the ebb and flow of tides, life has its own pace. Embrace the current phase with patience, seize opportunities when they align with the natural rhythm, and trust that the unfolding of events is part of a greater cosmic plan.



Card Title: Justice

Key Themes: Fairness, Balance, Accountability, Truth

Card Description:

The "Justice" card embodies principles of fairness, balance, and the quest for truth. It may feature symbolic representations of scales, legal symbols, or other imagery that conveys the concept of justice being served.

Fairness Prevails: The "Justice" card signifies a time when fairness and impartiality will prevail. It suggests that your actions and decisions will be judged based on their inherent justice, integrity, and adherence to ethical standards.

Balancing Scales: This card encourages you to strive for balance in your life. Consider the different aspects of your situation, and be mindful of maintaining equilibrium in your relationships, choices, and responsibilities.

Accountability: Justice often involves accountability. The "Justice" card prompts you to take responsibility for your actions and decisions. Ensure that your choices align with your values and consider the consequences of your behaviour.

Truth Unveiled: Truth is a cornerstone of justice. The card may indicate a period of truth coming to light, whether in your personal life or in broader contexts. Embrace honesty and transparency, and be prepared for the unveiling of hidden truths.

Legal Matters: If you are dealing with legal issues, the "Justice" card may symbolise a resolution or a fair outcome. It encourages you to trust in the legal process and to advocate for justice and fairness.

Guidance: Embrace the principles of justice in your actions and decisions. Strive for fairness, accountability, and truth in all aspects of your life. The "Justice" card reminds you that, ultimately, justice is a force that seeks equilibrium and truth, and aligning with these principles will bring positive outcomes.



Card Title: Wealth

Key Themes: Abundance, Prosperity, Fulfilment, Money, Affluent.

Card Description:

The "Wealth" card radiates the energy of abundance, prosperity, and the fulfilment of material and emotional needs. It may feature symbols of opulence, symbols of abundance, or other imagery that represents the various forms of wealth.

Material Prosperity: The "Wealth" card signifies a period of material abundance and prosperity. It suggests that your endeavours are likely to yield positive results, bringing financial stability and success.

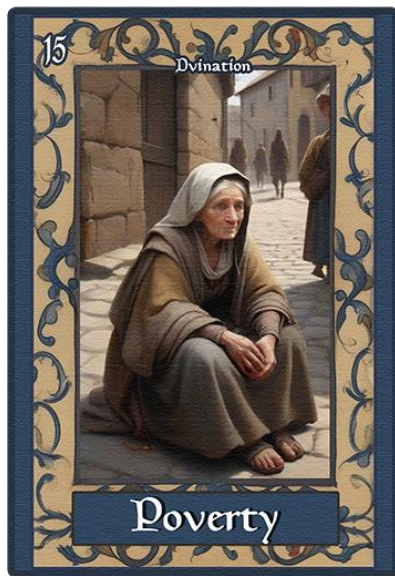
Abundance in All Forms: Wealth encompasses more than just material riches. This card encourages you to recognize and appreciate the abundance in various aspects of your life, including relationships, health, and personal fulfilment.

Gratitude and Generosity: Cultivate a mindset of gratitude for the abundance you have received. The "Wealth" card suggests that, as you acknowledge your blessings, you can also share your wealth and abundance with others through generosity and kindness.

Investment and Growth: Consider opportunities for wise investments and growth. This card may signify a time to explore ways to increase your wealth through strategic decisions, whether in financial investments or personal development.

Spiritual Wealth: Wealth isn't only about material possessions. The "Wealth" card may also signify spiritual richness and fulfilment. Connect with your inner self, nurture your spiritual well-being, and recognize the value of inner peace and contentment.

Guidance: Embrace the abundant energy surrounding you. The "Wealth" card encourages you to appreciate the richness of your life and to share your prosperity with others. As you navigate this period of abundance, be mindful of the opportunities for growth and the importance of gratitude.



Card Title: Poverty

Key Themes: Scarcity, Challenges, Resourcefulness, Resilience, Poor.

Card Description:

The "Poverty" card addresses themes of scarcity and challenges. It may feature symbols depicting financial hardship, meagre resources, or other imagery that represents the struggles associated with poverty.

Facing Challenges: The "Poverty" card suggests a period of facing challenges related to scarcity, whether it be financial difficulties, emotional struggles, or a lack of resources. It encourages you to confront these challenges with resilience and strength.

Resourcefulness: In times of scarcity, the card prompts you to tap into your resourcefulness. Explore creative solutions and alternatives to navigate through difficult circumstances, emphasising the importance of adaptability and innovation.

Learning from Adversity: The challenges represented by the "Poverty" card can serve as valuable teachers. Embrace the lessons that adversity brings, and recognize the potential for personal growth and resilience in the face of difficulty.

Community Support: This card may also highlight the importance of community and support networks during challenging times. Seek assistance from friends, family, or community resources as you work through hardships.

Empathy and Compassion: The "Poverty" card encourages empathy and compassion, both for yourself and others who may be facing similar challenges. Approach difficulties with kindness, and recognize the strength that can come from shared experiences.

Guidance: While the "Poverty" card acknowledges the difficulties you may be facing, it also emphasises the potential for growth, resilience, and community support. Use this time to cultivate resourcefulness, learn from challenges, and foster connections that can provide strength during challenging periods.



Card Title: Generosity

Key Themes: Giving, Abundance, Kindness, Sharing, SugarDaddy/Mommy

Card Description:

The "Generosity" card emanates the energy of giving, abundance, and benevolence. It may feature symbols of open hands, gifts, or other imagery representing the spirit of generosity.

Open-Hearted Giving: The "Generosity" card signifies a time of open-hearted giving and sharing. It encourages you to embrace a spirit of generosity, not only in material wealth but also in kindness, time, and positive energy.

Abundance Multiplied: As you give generously, the card suggests that the abundance in your life multiplies. This can manifest in various forms, including increased feelings of joy, deeper connections with others, and a sense of fulfillment.

Cultivating Kindness: Generosity extends beyond material gifts; it encompasses kindness and compassion. The card prompts you to cultivate a mindset of kindness, considering the needs and well-being of others in your actions and decisions.

Reciprocal Energy: The energy of generosity is often reciprocal. The card indicates that as you give generously, you also open yourself to receiving abundance in various aspects of your life, creating a positive cycle of giving and receiving.

Community Connection: This card may highlight the importance of community and connection. Generosity fosters stronger bonds within communities and encourages a sense of shared well-being.

Guidance: Embrace the opportunities to give generously and share your abundance with others. The "Generosity" card invites you to experience the joy and fulfillment that come from a generous heart and encourages you to create a positive impact in your community and relationships.



Card Title: New Born

Key Themes: Beginnings, Innocence, Fresh Start, Potential

Card Description:

The "New Born" card symbolises the dawn of new beginnings, innocence, and the limitless potential that comes with a fresh start. It may feature images of infants, eggs, or other symbols associated with the birth of something new.

Fresh Start: The "New Born" card heralds a period of fresh starts and new beginnings. It invites you to approach situations with the innocence and optimism of a newborn, leaving behind old patterns and embracing the potential for positive change.

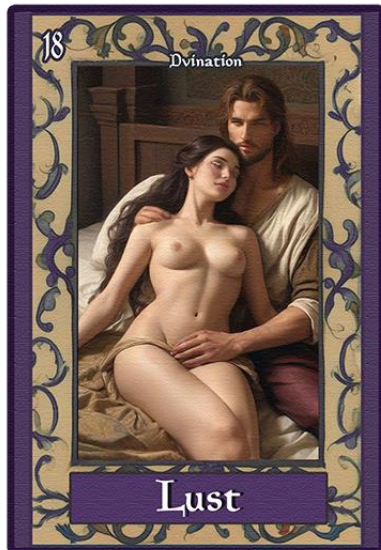
Innocence and Purity: Embrace the purity and innocence associated with new beginnings. This card encourages you to approach life with a clean slate, free from preconceived notions, and to see the world with fresh eyes.

Potential and Possibilities: Like a newborn holds the potential for infinite possibilities, this card suggests that you, too, have untapped potential waiting to be explored. Be open to new ideas, opportunities, and the limitless paths that lie ahead.

Nurturing Growth: The "New Born" card may also highlight the need for nurturing and care. Just as a newborn requires tender care to thrive, your new endeavours and aspirations may benefit from your attention and nurturing efforts.

Celebrate New Life: Celebrate the birth of new life, whether it's in the form of a project, a relationship, or a personal transformation. The "New Born" card invites you to honour and rejoice in the exciting potential that accompanies beginnings.

Guidance: Embrace the energy of new beginnings with open arms. The "New Born" card encourages you to step into a fresh chapter of your life with curiosity, optimism, and a sense of wonder. Embrace the potential for growth, learning, and positive transformation that comes with new opportunities.



Card Title: Lust

Key Themes: Desire, Intensity, Temptation , Sex.

Card Description:

The "Lust" card embodies the fiery energy of passion, desire, and intense emotions. It may feature symbols of flames, entwined bodies, or other imagery that represents the captivating and alluring nature of lust.

Passionate Energy: The "Lust" card signifies a surge of passionate and intense energy in your life. It invites you to explore and embrace your desires with enthusiasm, recognizing the power of passion to ignite creativity and fuel positive transformation.

Desire Unleashed: This card encourages you to connect with your deepest desires and embrace the sensual aspects of life. It may indicate a time to unleash your desires, allowing them to guide you toward experiences that bring joy, fulfilment, and personal growth.

Temptation and Allure: Be mindful of the allure of temptation. The "Lust" card suggests that intense desires may present both opportunities and challenges. Navigate temptations with awareness, ensuring that your actions align with your values and well-being.

Creative Expression: Lust is not only about romantic or physical desires; it can also be channelled into creative expression. The card prompts you to channel your passionate energy into artistic endeavours, projects, or activities that bring joy and fulfilment.

Balance in Relationships: In relationships, the "Lust" card emphasises the importance of balance. While passion is exhilarating, maintaining a harmonious connection involves understanding, communication, and mutual respect.

Guidance: Embrace the powerful energy of lust, but do so with mindfulness and balance. Whether expressing your desires, embarking on creative pursuits, or navigating the complexities of relationships, let the intensity of passion guide you toward experiences that enhance your well-being and bring vitality to your life.



Card Title: The Key

Key Themes: Revelation, Unlocking Potential, Understanding, Solutions

Card Description:

"The Key" card symbolises the unlocking of potential, revelation, and the discovery of solutions. It may feature imagery of keys, doors, or other symbols representing the opening of new possibilities.

Unlocking Potential: The "Key" card signifies a time of unlocking hidden potential within yourself or a situation. It suggests that you hold the key to revealing untapped talents, insights, or opportunities that can lead to personal growth.

Revelation and Clarity: This card may bring moments of revelation and clarity. Like a key that opens a door, it invites you to gain a deeper understanding of a situation, allowing you to see things more clearly and make informed decisions.

Solving Challenges: The "Key" card is a symbol of solutions and problem-solving. It encourages you to explore creative approaches to challenges, reminding you that the answers you seek may be within your reach or require a shift in perspective.

Opportunities Unlocked: As doors open with the turn of a key, this card suggests that new opportunities are on the horizon. Be open to possibilities, and trust that the key you hold will lead you to positive and enriching experiences.

Self-Discovery: The "Key" card may also signify a journey of self-discovery. Embrace the process of unlocking aspects of yourself that have been hidden or overlooked, leading to personal development and a deeper connection with your true nature.

Guidance: The "Key" card is a reminder that you possess the tools to unlock potential and find solutions. Be open to the revelations that come your way, trust in your abilities, and explore the opportunities that present themselves. The key you hold can lead to greater understanding and personal empowerment.



Card Title: Movement

Key Themes: Progress, Change, Flow, Action, Progression , Movement .

Card Description:

The "Movement" card symbolises the energy of progress, change, and the dynamic flow of life. It may feature symbols of motion, such as arrows, waves, or other imagery that represents the continual movement and evolution of situations.

Forward Momentum: The "Movement" card signifies a period of forward momentum. It encourages you to embrace the dynamic energy of change and progress, reminding you that life is in constant motion, and you have the ability to navigate its currents.

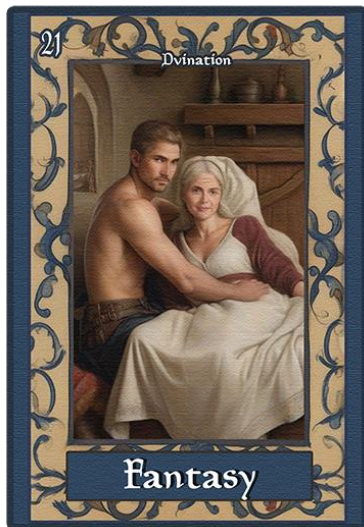
Adaptability: Like a flowing river, this card prompts you to be adaptable. Life is ever-changing, and the ability to adapt to new circumstances will enhance your resilience and ability to navigate challenges with ease.

Taking Action: The card encourages you to take proactive steps. It is a call to action, urging you to move forward with purpose and intention. Consider what steps you can take to contribute to your personal growth and the achievement of your goals.

Embracing Change: Change is a natural part of life, and the "Movement" card invites you to embrace it rather than resist. Recognize that change brings opportunities for growth, learning, and the discovery of new possibilities.

Flowing with Circumstances: This card suggests that, much like a dancer moving with the rhythm of music, you can flow with the circumstances around you. Trust in your ability to navigate the changes and find harmony within the dynamic rhythm of life.

Guidance: Embrace the energy of movement and progress. The "Movement" card encourages you to take active steps, be adaptable, and flow with the changes in your life. By doing so, you can harness the positive momentum and contribute to the unfolding journey of personal and spiritual growth.



Card Title: Fantasy

Key Themes: Romantic Connection, Deep Affection, Shared Dreams, Mutual Passion , Understanding.

Card Description:

"Fantasy" encapsulates the essence of a deep and romantic connection between individuals. It may feature symbols of intertwined hearts, dreamlike landscapes, or images that evoke the intimate and passionate nature of a shared fantasy.

Romantic Connection: The card signifies a profound and romantic connection between you and your partner. It speaks to the depth of your bond, emphasising the emotional and passionate aspects that make your relationship extraordinary.

Shared Dreams: "Fantasy" encourages you to explore and embrace the dreams you share as a couple. It symbolises a partnership where both individuals contribute to creating a shared vision for the future, filled with aspirations and mutual goals.

Mutual Passion: The card highlights the intense and mutual passion that exists between you and your partner. It represents the romantic spark that fuels your relationship, creating an atmosphere of love, desire, and emotional connection.

Enchanting Moments: Embrace the enchantment that each moment with your partner brings. The card invites you to cherish the magical and dreamlike quality of your relationship, turning ordinary moments into extraordinary memories.

Romantic Affirmation: "Fantasy" serves as a romantic affirmation, expressing the sentiment that your partner is not only a reality but also a cherished dream come true. It emphasises the idealised and deeply fulfilling nature of your connection.

Guidance: Celebrate the depth of your romantic connection and the shared dreams that bind you together. The "Fantasy" card invites you to revel in the passion, love, and enchantment that make your relationship a beautiful and dreamlike journey.



Card Title: Seduction

Key Themes: Allure, Temptation, Sensuality, Magnetic. Attraction , Seductive , Sexual Appeal

Card Description:

The "Seduction" card embodies an energy of allure, temptation, and sensuality. It may feature symbols that convey a sense of heightened attraction, such as entwined figures, seductive glances, or imagery that represents the potent force of seduction.

Irresistible Allure: The "Seduction" card signifies a magnetic and irresistible allure that captivates those around you. It suggests a time when your charm is heightened, drawing others in with a powerful and enchanting presence.

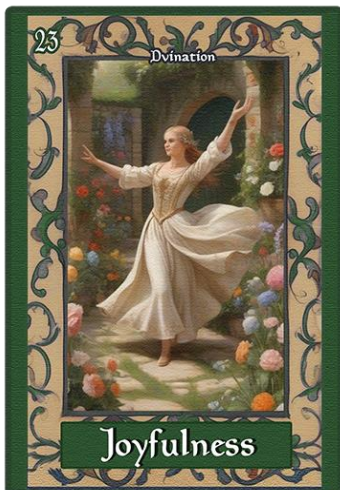
Temptation and Desire: Embrace the energy of temptation and desire. This card encourages you to explore the depths of your sensuality and to acknowledge the potent allure you hold. It may signify a period where you are both the seducer and the one being seduced.

Sensual Exploration: The card invites you to engage in sensual exploration, both within yourself and in your connections with others. It suggests a time of heightened awareness of the physical and emotional aspects of intimacy.

Magnetic Pull: Like a magnetic force, the "Seduction" card implies a strong pull that goes beyond the physical. It can represent an attraction that extends to the realms of emotion, intellect, and spirituality, creating a profound connection.

Cautionary Awareness: While celebrating the power of seduction, the card advises caution. Be aware of the intentions behind your actions and ensure that the energy of seduction is wielded responsibly, respecting the boundaries and consent of all parties involved.

Guidance: The "Seduction" card invites you to embrace the allure and magnetism within and around you. Whether it's through personal connections or creative endeavours, use this potent energy responsibly, ensuring that it enhances positive connections and fosters a deeper appreciation for the sensual aspects of life.



Card Title: Joyfulness

Key Themes: Happiness, Celebration, Positivity, Vibrant Energy

Card Description:

The "Joyfulness" card radiates the energy of happiness, celebration, and vibrant positivity. It may feature symbols of laughter, colourful imagery, or scenes that convey a sense of exuberance and joy.

Pure Happiness: The "Joyfulness" card signifies a time of pure and unbridled happiness. It invites you to bask in the light of joy, embracing the positive energy that surrounds you and radiates from within.

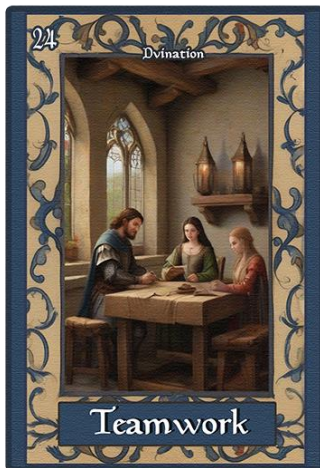
Celebration of Life: This card encourages you to view life as a celebration. Whether big or small, find reasons to celebrate the moments, achievements, and the simple joys that make life a beautiful journey.

Positive Vibrations: Embrace the positive vibrations that the "Joyfulness" card brings. It suggests an uplifting period where optimism and enthusiasm permeate your experiences, creating an atmosphere of warmth and brightness.

Connection and Laughter: Joy often comes from connection and shared laughter. The card encourages you to nurture your relationships, engage in activities that bring laughter, and surround yourself with the people who uplift your spirits.

Gratitude and Appreciation: Practise gratitude and appreciation for the joyful moments in your life. The "Joyfulness" card prompts you to recognize and acknowledge the blessings, fostering a mindset that attracts even more positivity.

Guidance: Celebrate the joyfulness that surrounds you. Whether in moments of laughter, achievements, or the simple pleasures of life, the "Joyfulness" card encourages you to embrace the positive energy and let it guide you towards a brighter, more fulfilling existence.



Card Title: Teamwork

Key Themes: Collaboration, Unity, Synergy, Collective Effort , Team , Group

Card Description:

The "Teamwork" card symbolises the power of collaboration, unity, and the strength that emerges from collective effort. It may feature symbols of hands joining, interconnected circles, or scenes that convey a sense of people working together harmoniously.

Collaborative Energy: The "Teamwork" card embodies the spirit of collaborative energy. It signifies a time when working together with others will yield powerful results, emphasising the strength found in unity and mutual support.

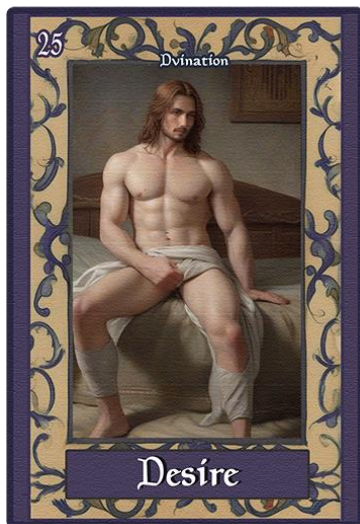
Unity in Diversity: This card encourages you to appreciate the diversity within a team. Just as each piece contributes to the beauty of a mosaic, every individual in the team brings unique skills and perspectives, creating a harmonious and vibrant whole.

Synergy and Cohesion: Teamwork suggests a synergy where the combined efforts of individuals result in something greater than the sum of its parts. The card prompts you to seek cohesion, aligning goals, and working towards a common purpose.

Shared Responsibilities: Embrace the concept of shared responsibilities. The "Teamwork" card invites you to distribute tasks, leverage each team member's strengths, and foster an environment where everyone feels valued for their contributions.

Supportive Community: Beyond tasks and projects, teamwork extends to creating a supportive community. The card encourages you to build connections within your team, fostering a sense of camaraderie and mutual encouragement.

Guidance: Embrace the power of collaboration and teamwork. Whether in your personal or professional life, the "Teamwork" card encourages you to appreciate the strength that comes from working harmoniously with others. Seek opportunities for collaboration, celebrate shared successes, and build a supportive community that enhances everyone's journey.



Card Title: Desire

Key Themes: Passion, Longing, Romantic Fires, Motivation, Horny

Card Description:

The "Desire" card ignites the flames of passion, longing, and the romantic fires that fuel motivation. It may feature symbols of intertwined hearts, yearning figures, or scenes that capture the intensity of deep desires in both personal and romantic realms.

Fiery Passion in Romance: The "Desire" card represents a passionate surge within romantic connections. It signifies a time when the flames of desire burn brightly, infusing your relationships with a heightened sense of intimacy and longing.

Longing for Connection: Embrace the power of longing for a deep romantic connection. This card encourages you to acknowledge and express your desires in relationships, fostering a sense of closeness and shared aspirations with your partner.

Motivated Pursuit of Love: Desire serves as a motivational force in matters of the heart. The card prompts you to channel your romantic desires into meaningful actions, whether it's expressing your love, deepening your connection, or pursuing shared dreams with your partner.

Sensual and Emotional Bonds: "Desire" extends beyond the physical; it delves into the realms of deep emotional and sensual bonds. Explore the multifaceted nature of desire in your romantic life, creating moments of intimacy that are both passionate and emotionally rich.

Guidance: Embrace the fervent energy of desire in your romantic life. The "Desire" card encourages you to express your passions, deepen your connection with your partner, and let the intensity of your romantic fires guide you toward a love that is both passionate and purposeful.



Card Title: Chemistry

Key Themes: Magnetic Connection, Dynamic Energy, Attraction, Symbiotic Relationship

Card Description:

The "Chemistry" card embodies the dynamic energy of magnetic connection and the powerful forces of attraction. It may feature symbols of intertwined elements, energetic waves, or scenes that capture the essence of two energies coming together in a symbiotic dance.

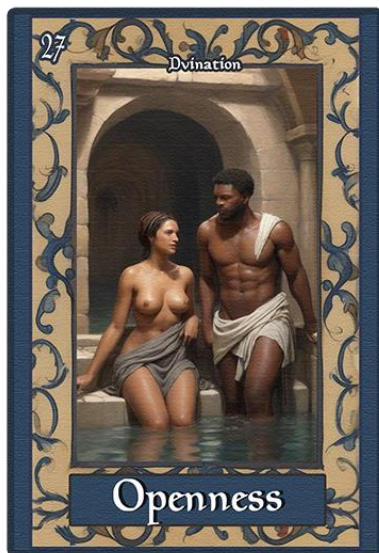
Magnetic Connection: The "Chemistry" card signifies a magnetic and irresistible connection between individuals. It represents a time when energies align harmoniously, creating a powerful and attractive force that draws people together.

Attraction and Alignment: The card symbolises a strong and natural attraction. It encourages you to acknowledge and appreciate the unique qualities that draw you to others, whether in friendships, partnerships, or any form of relationship.

Symbiotic Relationship: "Chemistry" implies a symbiotic relationship where both individuals enhance and complement each other. It's a reminder to cherish connections that contribute positively to your life and align with your goals and values.

Energetic Resonance: Beyond physical attraction, the card speaks to energetic resonance. It prompts you to recognize the subtle energies at play in your relationships, understanding that a harmonious connection involves a balance of both shared and individual energies.

Guidance: Celebrate the powerful chemistry in your connections. The "Chemistry" card encourages you to be present and appreciative of the dynamic energy flowing between you and others. Whether in personal or professional relationships, let the magnetic forces of connection guide you toward meaningful and fulfilling interactions.



Card Title: Openness

Key Themes: Transparency, Receptivity, Vulnerability, Embracing Possibilities

Card Description:

The "Openness" card symbolises a state of transparency, receptivity, and the willingness to embrace possibilities. It may feature symbols of open doors, transparent veils, or scenes that convey a sense of being open to new experiences and connections.

Transparent Communication: The "Openness" card signifies a commitment to transparent communication. It encourages you to express your thoughts, feelings, and intentions openly, fostering an environment of honesty and clarity in your interactions.

Receptivity to Change: Embrace a mindset of receptivity to change. This card suggests a time when you are open to new ideas, perspectives, and opportunities, allowing the winds of change to bring fresh and positive experiences into your life.

Vulnerability as Strength: "Openness" highlights the strength found in vulnerability. It prompts you to embrace your authentic self, acknowledging that true openness involves a willingness to be vulnerable and share your genuine thoughts and emotions.

Exploring Possibilities: The card encourages you to explore the vast possibilities that open up when you approach life with an open heart and mind. Be receptive to new connections, opportunities, and experiences that may lead to personal growth and fulfilment.

Creating Space for Growth: "Openness" is about creating space for growth. It invites you to release any preconceived notions, judgments, or fears that may hinder your progress. By being open, you allow room for positive transformations in your life.

Guidance: Embrace the spirit of openness in your journey. The "Openness" card encourages you to communicate transparently, be receptive to change, and approach life with vulnerability and authenticity. By doing so, you invite positive energies and endless possibilities into your experience.



Card Title: Confidence

Key Themes: Self-assurance, Empowerment, Inner Strength, Radiance

Card Description:

The "Confidence" card radiates an energy of self-assurance, empowerment, and inner strength. It may feature symbols of a strong stance, radiant auras, or scenes that evoke a sense of unwavering confidence.

Inner Strength: The "Confidence" card signifies a reservoir of inner strength within you. It speaks to a time when you are grounded in your abilities, embracing challenges with resilience, and drawing upon your core strengths.

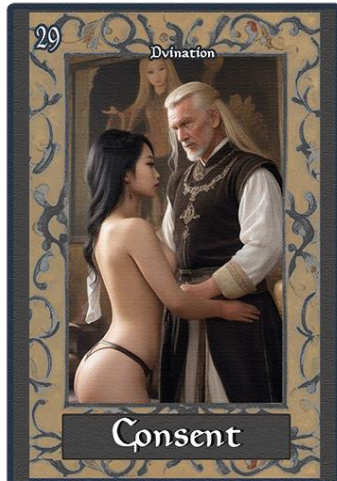
Self-assurance: Embrace self-assurance and belief in your capabilities. This card encourages you to trust in your skills, knowledge, and unique qualities, fostering a mindset that radiates confidence in various aspects of your life.

Empowerment: "Confidence" is a symbol of empowerment. It prompts you to recognize your worth, tap into your personal power, and stand firm in your convictions. This empowerment extends beyond personal achievements and influences your interactions with the world.

Radiant Presence: The card suggests a radiant presence that captivates those around you. Whether in professional or personal settings, confidence attracts positive attention and paves the way for success, collaboration, and meaningful connections.

Bold Decision-making: Embrace bold decision-making. The "Confidence" card encourages you to trust your instincts and make decisions with assurance. It reminds you that confidence is not just about external presentation but also about having faith in your choices.

Guidance: Stand tall in the light of your own confidence. The "Confidence" card invites you to recognize and embody your inner strength. Trust in your abilities, radiate self-assurance, and let confidence guide you as you navigate challenges, pursue goals, and engage with the world around you.



Card Title: Consent

Key Themes: Boundaries, Respect, Communication, Mutual Agreement

Card Description:

The "Consent" card emphasises the importance of boundaries, respect, and clear communication within relationships. It may feature symbols of intertwined hands, communication icons, or scenes that convey a sense of mutual understanding and agreement.

Respecting Boundaries: The "Consent" card is a reminder to prioritise and respect boundaries. It encourages you to be mindful of your own boundaries and to honour the boundaries set by others, fostering an environment of mutual respect.

Clear Communication: Embrace the power of clear communication. This card prompts you to openly discuss intentions, desires, and expectations with others, ensuring that everyone involved is on the same page and that consent is given willingly and enthusiastically.

Mutual Agreement: "Consent" signifies the importance of mutual agreement in any interaction. It encourages you to seek and receive consent, whether in personal relationships, collaborations, or any situation where shared understanding is essential.

Establishing Trust: The card emphasises that consent is integral to building trust. By respecting one another's boundaries and obtaining mutual agreement, you contribute to the establishment of a trusting and secure foundation in your connections.

Empowering Choices: Embrace the idea that consent empowers individuals to make choices that align with their values and comfort levels. The "Consent" card encourages you to prioritise the empowerment of yourself and those around you through open and respectful communication.

Guidance: Prioritise consent in your interactions. The "Consent" card encourages you to communicate openly, respect boundaries, and ensure that agreements are mutual and enthusiastic. By doing so, you create a foundation for healthy, empowered, and fulfilling relationships.



Card Title: Committed

Key Themes: Dedication, Loyalty, Firm Resolve, Enduring Bonds, Taken Man/Woman.

Card Description:

The "Committed" card radiates an energy of dedication, loyalty, and the strength of enduring bonds. It may feature symbols of intertwined rings, unbreakable chains, or scenes that evoke a sense of unwavering commitment.

Dedication and Loyalty: The "Committed" card signifies a deep commitment to the people, goals, or values that hold significance in your life. It represents unwavering dedication and loyalty to fostering enduring connections.

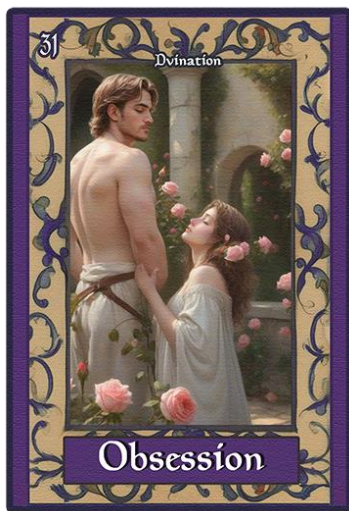
Firm Resolve: Embrace a firm resolve in your commitments. This card encourages you to stand steadfast in your promises and to approach challenges with a determined mindset. Your commitment becomes a source of strength and resilience.

Enduring Bonds: "Committed" speaks to the creation of enduring bonds. Whether in relationships, projects, or personal growth, this card signifies a commitment to longevity, building connections that withstand the tests of time.

Shared Goals: The card may symbolise shared goals and aspirations. It encourages you to align your commitments with shared visions, creating a sense of unity and collaboration in your endeavours.

Stability and Trust: Commitment fosters stability and trust. The "Committed" card prompts you to cultivate a sense of security and reliability in your connections, establishing a foundation upon which strong and lasting relationships can thrive.

Guidance: Embrace the power of commitment in your journey. The "Committed" card encourages you to dedicate yourself wholeheartedly to the things that matter most. Whether it's relationships, projects, or personal growth, let your commitment be the guiding force that propels you towards enduring fulfilment.



Card Title: Obsession

Key Themes: Intense Focus, Compulsion, Emotional Intensity, Boundaries , Stalker , Crush

Card Description:

The "Obsession" card within the context of relationships signifies an intense focus on a specific connection. It may feature symbols of entwined hearts, captivating imagery, or scenes that convey the magnetic pull between individuals.

Intense Focus on Connection: The "Obsession" card suggests an all-encompassing focus on a particular relationship. It signifies a time when your thoughts, emotions, and energy are overwhelmingly directed towards someone significant in your life..

Awareness of Relationship Boundaries: "Obsession" in relationships prompts you to be mindful of boundaries. While passion is powerful, it's crucial to recognize when your intensity may impact the well-being of both you and your partner. Balance is key in maintaining a healthy and harmonious connection.

Navigating Emotional Extremes: The card may symbolise an emotional rollercoaster within the relationship. It encourages you to navigate the highs and lows with self-awareness, understanding that intense emotions can be transformative and may require careful management.

Transformative Power of Love: Recognize the transformative potential within the obsession with a relationship. It signifies a deep dive into the core of your desires and motivations, potentially leading to profound personal growth and evolution within the context of your connection.

Guidance: Channel the intensity of obsession in relationships with awareness and purpose. The "Obsession" card encourages you to explore the depths of your connection while maintaining a healthy balance. Be mindful of boundaries, navigate emotional extremes with care, and harness the transformative power that love can bring to your relationship.



Card Title: Flirtation

Key Themes: Playfulness, Charm, Light-hearted Connections, Expressive Energy

Card Description:

The "Flirtation" card radiates an energy of playfulness, charm, and light-hearted connections. It may feature symbols of winking eyes, playful gestures, or scenes that convey a sense of expressive and engaging energy.

Playful Interaction: The "Flirtation" card signifies a time of playful interaction and light-hearted exchanges. It suggests a playful energy that adds a spark of joy and excitement to your connections, whether in friendships or budding romances.

Charm and Wit: Embrace charm and wit in your interactions. This card encourages you to express yourself with a delightful and magnetic charm, using humour and light-heartedness to create an atmosphere of joy and positive engagement.

Expressive Energy: "Flirtation" embodies expressive energy. It prompts you to communicate openly and creatively, infusing your interactions with a sense of fun and spontaneity. Allow your personality to shine through in a way that uplifts and captivates.

Building Connections: The card may symbolise the early stages of connection and exploration. Whether you're forming new friendships or exploring romantic possibilities, "Flirtation" suggests that a playful and engaging approach can lead to deeper connections.

Enjoying the Moment: Embrace the joy of the moment. The "Flirtation" card encourages you to enjoy the present, savouring the delightful exchanges and connections that come from a lighthearted and flirtatious energy.

Guidance: Engage in playful and flirtatious interactions with an open heart. The "Flirtation" card invites you to express yourself with charm, enjoy the joyous connections that emerge, and let the lighthearted energy enhance the quality of your social interactions.



Card Title: Sinful

Key Themes: Temptation, Moral Struggles, Consequences, Shadow Overgrowth, Unethical.

Card Description:

The "Sinful" card delves into the darker aspects of temptation, moral struggles, and the looming consequences of shadow overgrowth. It may feature symbols of entangled thorns, obscured imagery, or scenes that convey a sense of internal conflict and potential negative outcomes.

Temptation and Self-Indulgence: The "Sinful" card signifies a period of succumbing to temptation and self-indulgence. It warns of the allure of desires that may lead you down a path where instant gratification overrides long-term well-being.

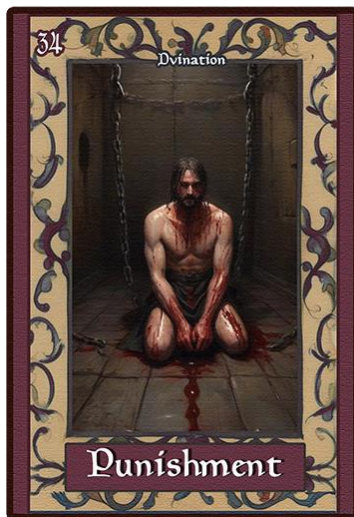
Moral Struggles and Ethical Erosion: Embrace the unsettling journey of moral struggles and ethical erosion. This card suggests a time when your values are tested, and the boundaries between right and wrong become blurred, leading to potential conflicts with your own moral compass.

Consequences of Shadows: "Sinful" embodies the consequences of allowing shadows to overgrow. It prompts you to recognize that unchecked desires and moral compromises can cast a long and dark shadow, impacting your relationships, well-being, and overall life journey.

Entanglement in Taboos: The card may symbolise entanglement in forbidden territories and destructive behaviours. It encourages you to be cautious about venturing into realms that challenge not only societal norms but also your personal integrity, as they may lead to negative consequences.

Imbalance and Inner Turmoil: Embrace the recognition of imbalance and inner turmoil. The "Sinful" card warns of the potential for internal conflict and disharmony, urging you to confront the negative consequences of choices that deviate from your core values.

Guidance: Navigate the shadows with caution. The "Sinful" card serves as a warning to resist the allure of destructive desires, recognize the consequences of moral compromises, and strive for a path that aligns with your values to avoid negative repercussions in your life.



Card Title: Punishment

Key Themes: Accountability, Consequences, Learning from Mistakes, Redemption

Card Description:

The "Punishment" card delves into the themes of accountability, consequences, and the potential for redemption. It may feature symbols of scales, shackles, or scenes that convey a sense of facing the repercussions of one's actions.

Facing Consequences: The "Punishment" card signifies a time when you must face the consequences of your actions. It encourages you to confront the results of past choices, taking accountability for both positive and negative outcomes.

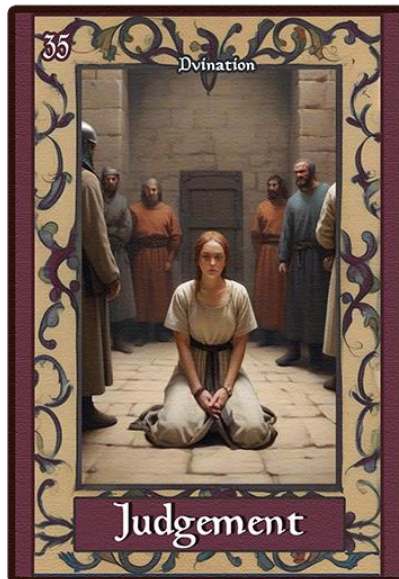
Learning from Mistakes: Embrace the opportunity for growth through learning from mistakes. This card suggests that the challenges and difficulties you face can serve as valuable lessons, providing insights that contribute to personal development and resilience.

Accountability and Integrity: "Punishment" emphasises the importance of accountability and maintaining integrity. It prompts you to uphold your responsibilities, be transparent about your actions, and ensure that you are true to your principles even in the face of difficulties.

Seeking Redemption: The card may symbolise a path toward redemption. It encourages you to actively work towards making amends for past mistakes, seeking forgiveness where necessary, and demonstrating a commitment to positive change.

Balancing Scales: "Punishment" embodies the concept of balancing the scales of justice. It prompts you to seek fairness and equity in your dealings, acknowledging the impact of your actions on yourself and others, and striving for a harmonious resolution.

Guidance: Confront the consequences with resilience and a commitment to positive change. The "Punishment" card serves as a reminder to take accountability for your actions, learn from your mistakes, and embrace the potential for redemption through sincere efforts towards personal growth and integrity.



Card Title: Judgement

Key Themes: External Evaluation, Public Perception, Conformity, Societal Expectations

Card Description:

The "Judgement" card delves into the themes of external evaluation, public perception, conformity, and the impact of societal expectations. It may feature symbols of scrutinising eyes, social scales, or scenes that convey a sense of collective judgement within the social sphere.

External Evaluation: The "Judgement" card signifies a period of external evaluation, where your actions, choices, and appearance are under the scrutiny of society. It prompts you to be aware of how others perceive you and the impact it may have on your life.

Public Perception: Embrace the influence of public perception. This card suggests that societal opinions and judgments can play a significant role in shaping your experiences, encouraging you to navigate social interactions with awareness and authenticity.

Conformity and Expectations: "Judgement" embodies the pressure to conform to societal expectations. It encourages you to examine whether you are aligning your choices with your true self or succumbing to external pressures, fostering a deeper understanding of your authenticity.

Navigating Collective Opinions: The card prompts you to navigate collective opinions with resilience and self-assurance. It suggests that while societal judgement may be present, your sense of self-worth and individuality can serve as powerful anchors in the face of external scrutiny.

Impact on Relationships: "Judgement" signifies the potential impact of societal expectations on relationships. It encourages you to explore how social norms may influence your connections, fostering a deeper awareness of the dynamics within your social sphere.

Guidance: Navigate the complexities of social judgement with authenticity and self-awareness. The "Judgement" card invites you to be true to yourself, recognize the influence of societal expectations, and cultivate relationships that align with your values and individuality.



Card Title: Ending

Key Themes: Closure, Transition, Finality, Reflection

Card Description:

The "Ending" card represents the culmination of a chapter, offering closure, marking a transition, and inviting moments of reflection. It may feature symbols of closed doors, setting suns, or scenes that evoke a sense of conclusion and the beginning of a new phase.

Closure and Resolution: The "Ending" card signifies the importance of closure and resolution. It prompts you to bring a sense of completion to aspects of your life that have served their purpose, allowing you to move forward unencumbered.

Transition and Change: Embrace the theme of transition and change. This card suggests that certain phases of your journey are coming to an end, paving the way for a new and uncharted path. Be open to the opportunities that lie beyond the closing chapter.

Finality with Grace: "Ending" embodies finality, urging you to embrace it with grace and acceptance. It's a reminder that some things must conclude to make room for fresh experiences. Approach these conclusions with a sense of gratitude for the lessons they've imparted.

Reflection on the Journey: The card may symbolize a moment for reflection on your journey. Take time to acknowledge the experiences, challenges, and growth that have shaped you. Use this introspection as a guide for the next steps in your evolving narrative.

Embracing New Beginnings: "Ending" encourages you to embrace the concept that every ending is a prelude to new beginnings. While farewells can be bittersweet, they hold the promise of unexplored adventures and untapped potential.

Guidance: Navigate endings with a sense of closure and gratitude. The "Ending" card invites you to reflect on the completed chapters of your life, embrace the transitions, and anticipate the unfolding story that awaits in the next phase of your journey.



Card Title: Intrigue

Key Themes: Mystery, Curiosity, Deeper Understanding, Unveiling Secrets

Card Description:

The "Intrigue" card captivates with themes of mystery, curiosity, and the pursuit of deeper understanding. It may feature symbols of hidden doors, enigmatic figures, or scenes that evoke a sense of intrigue and the unveiling of secrets.

Mystery Unveiled: The "Intrigue" card invites you to unravel mysteries in your life. It signifies a period where the unknown becomes a source of fascination, prompting you to explore and unveil the secrets that lie beneath the surface.

Curiosity and Exploration: Embrace your natural curiosity. This card encourages you to approach situations with an open and inquisitive mind, seeking to understand the complexities that may be concealed. Allow your curiosity to be a guiding light.

Deeper Understanding: "Intrigue" embodies the pursuit of deeper understanding. It prompts you to delve beneath the surface, recognizing that there's often more to a situation than meets the eye. This quest for knowledge can lead to profound insights and personal growth.

Uncovering Hidden Layers: The card may symbolize a journey of uncovering hidden layers within yourself and others. It encourages you to peel back the metaphorical layers, revealing authentic truths and fostering a richer connection with the world around you.

Embracing Complexity: "Intrigue" encourages you to embrace the complexity of life. Instead of shying away from the unknown, see it as an invitation to engage with the intricacies and nuances that make each experience unique and fascinating.

Guidance: Embrace the sense of intrigue in your life with an open heart and an inquisitive spirit. The "Intrigue" card invites you to explore the mysteries, uncover hidden truths, and appreciate the beauty that lies in the quest for deeper understanding.



Card Title: Transformation

Key Themes: Metamorphosis, Growth, Renewal, Personal Evolution, New Scenery , Changes

Card Description:

The "Transformation" card symbolises a profound process of metamorphosis, growth, and renewal. This card features symbols of a woman transforming, emerging from an ocean and becoming a mermaid, or scenes that convey a sense of change and personal evolution and scenery.

Metamorphosis at Hand: The "Transformation" card indicates a period of profound metamorphosis. Like a butterfly emerging from a cocoon, it suggests that you are undergoing a significant transformation that touches every aspect of your being.

Growth and Expansion: Embrace the theme of growth and expansion. This card encourages you to welcome change as an opportunity for personal development. Just as a caterpillar transforms, you are evolving into a more authentic and empowered version of yourself.

Renewal and Rebirth: "Transformation" embodies the concept of renewal and rebirth. It prompts you to shed old layers that no longer serve you, making space for fresh perspectives, experiences, and a revitalised sense of purpose.

Evolving Identity: The card may symbolise an evolving identity. It invites you to explore the depths of your being, allowing aspects of yourself to surface that were previously hidden. Embrace these revelations as integral to your ongoing journey.

Embracing Change: "Transformation" encourages you to embrace change with open arms. It signifies that the process of transformation is a natural part of life's cycles, and by accepting it willingly, you can navigate this period of evolution with grace and resilience.

Guidance: Embrace the transformative energy at play. The "Transformation" card invites you to welcome change as a catalyst for personal evolution. Embrace the journey of growth, allow your authentic self to emerge, and trust in the positive outcomes that come with embracing transformation.



Card Title: Self-Discovery

Key Themes: Inner Exploration, Authentic Awakening, Personal Revelation, Embracing Identity

Card Description:

The "Self-Discovery" card beckons you on a journey of inner exploration, inviting an authentic awakening and the revelation of your true self. It may feature symbols of ancient scrolls, mirrors reflecting growth, or scenes that evoke a sense of personal revelation and acceptance.

Inner Exploration: The "Self-Discovery" card signifies a profound period of inner exploration. It prompts you to embark on a journey within, exploring the vast landscapes of your thoughts, emotions, and beliefs to uncover the gems that contribute to your unique identity.

Authentic Awakening: Embrace the theme of authentic awakening. This card encourages you to awaken to your true self, shedding layers of societal conditioning and external expectations. Through this process, you reconnect with the core of your being, embracing authenticity in its purest form.

Personal Revelation: "Self-Discovery" embodies the concept of personal revelation. It invites you to unveil aspects of yourself that may have been hidden or overlooked. These revelations serve as guideposts, leading you towards a deeper understanding of your motivations, dreams, and inner truths.

Embracing Identity: The card may symbolise a powerful embrace of your identity. It prompts you to celebrate your uniqueness, recognizing that self-discovery is a journey of self-love and acceptance. Embracing all facets of yourself contributes to a harmonious and fulfilling life.

Empowerment through Knowledge: "Self-Discovery" encourages you to empower yourself through knowledge. As you discover more about who you are, you gain the wisdom and strength needed to navigate life's challenges with resilience and authenticity.

Guidance: Dive into the realms of self-discovery with courage and an open heart. The "Self-Discovery" card invites you to embrace your true identity, navigate the path of personal revelation, and celebrate the ongoing journey towards a more authentic and empowered version of yourself.



Card Title: Black Cat

Key Themes: Mystery, Intuition, Fortune, Stealth

Card Description:

The "Black Cat" card embodies the mystical energies of mystery, intuition, and the subtle presence of fortune. It may feature symbols of feline grace, lunar phases, or scenes that convey a sense of enigmatic charm and the unseen forces at play.

Mysterious Presence: The "Black Cat" card signifies a mysterious presence in your life. It prompts you to pay attention to the subtle energies and intuitive nudges that guide you through the unknown realms. Trust in the unseen forces that surround you.

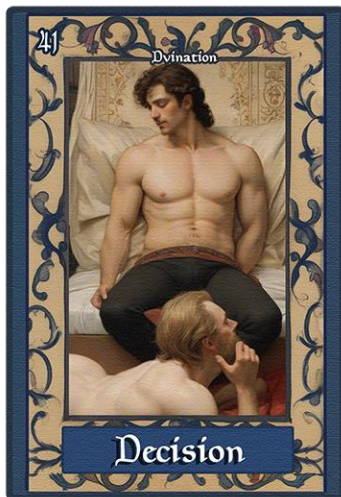
Intuitive Wisdom: Embrace the theme of intuitive wisdom. This card encourages you to tap into your inner knowing, relying on your instincts and intuition to navigate situations. The black cat symbolises a silent guide, urging you to trust your gut feelings.

Fortune and Luck: "Black Cat" embodies the energies of good fortune and luck. It suggests that serendipitous moments and positive surprises may be on the horizon. Approach life with a sense of openness, knowing that unseen opportunities may be presenting themselves.

Stealth and Grace: The card may symbolise the qualities of stealth and grace. Like a black cat moving through the shadows, it encourages you to move through life with poise and agility. Embrace a sense of flexibility and adaptability in your endeavours.

Connection to the Unseen: "Black Cat" prompts you to acknowledge and honour your connection to the unseen realms. Whether it's a heightened sense of awareness or a deeper connection to the mystical, recognize the magic that surrounds you.

Guidance: Trust your instincts and embrace the mystery. The "Black Cat" card invites you to move through life with intuitive grace, acknowledging the unseen forces at play. Embrace the energies of good fortune and allow the mystical presence of the black cat to guide you on your journey.



Card Title: Decision

Key Themes: Choices, Crossroads, Clarity, Empowerment

Card Description:

The "Decision" card centres around the themes of choices, reaching crossroads, seeking clarity, and embracing the empowerment that comes with making decisions. It may feature symbols of diverging paths, scales of balance, or scenes that convey a sense of thoughtful contemplation.

Crossroads Ahead: The "Decision" card indicates that you are at a crossroads in your journey. It prompts you to acknowledge the choices before you, recognizing the significance of the decisions you are about to make.

Weighing Options: Embrace the theme of weighing options. This card encourages you to take the time to consider the potential outcomes of each choice. Trust in your ability to assess and discern the paths laid out before you.

Seeking Clarity: "Decision" embodies the quest for clarity. It prompts you to seek understanding and insight into the consequences and benefits of your choices. Through careful consideration, clarity emerges, guiding you towards a decision aligned with your truest intentions.

Empowerment through Choice: The card signifies the empowerment that comes with making decisions. It encourages you to embrace the responsibility and power inherent in choosing your path. Your decisions shape your journey and contribute to your personal growth.

Embracing Change: "Decision" prompts you to see choices as opportunities for growth and change. Even in the face of uncertainty, each decision you make leads to new experiences, lessons, and the continual evolution of your life story.

Guidance: Embrace the power of choice with thoughtful consideration. The "Decision" card invites you to navigate the crossroads with clarity, empowering yourself to make choices aligned with your authentic self. Trust in your ability to decide and move forward with confidence.



Card Title: Promise

Key Themes: Commitment, Trust, Fulfilment, Sacred Vows

Card Description:

The "Promise" card radiates with themes of commitment, trust, the fulfilment of vows, and the sacred nature of promises made. It may feature symbols of clasped hands, intertwined rings, or scenes that evoke a sense of dedication and the lasting impact of pledges.

Commitment and Dedication: The "Promise" card signifies a deep commitment and dedication to a person, goal, or principle. It prompts you to recognize the gravity and significance of the promises you make and the impact they have on your journey.

Trust and Reliability: Embrace the theme of trust and reliability. This card encourages you to honour and uphold the promises you have made, fostering a sense of trust in your relationships and endeavours. Trust is the foundation upon which commitments thrive.

Fulfilment of Vows: "Promise" embodies the concept of the fulfilment of vows. It suggests that the promises you make carry weight and importance, and as you honour them, you contribute to the growth and depth of your connections.

Sacred Nature of Commitment: The card may symbolise the sacred nature of commitment. Whether it's a promise to oneself or others, it encourages you to approach commitments with reverence and mindfulness, understanding their impact on your spiritual and emotional well-being.

Strength in Promises: "Promise" reinforces the strength found in promises. It signifies that the commitments you make have the power to endure challenges, serving as beacons of stability and sources of inspiration along your life's journey.

Guidance: Honor the promises you make with sincerity and integrity. The "Promise" card invites you to recognize the sacred nature of commitments, fostering trust, and experiencing the profound fulfilment that comes from staying true to your word.



Card Title: Marriage

Key Themes: Union, Partnership, Sacred Bond, Commitment

Card Description:

The "Marriage" card radiates with themes of union, partnership, the sacred bond of marriage, and the enduring commitment between two individuals. It may feature symbols of rings, entwined hearts, or scenes that evoke a sense of celebration and the profound connection shared between partners.

Union of Souls: The "Marriage" card signifies the union of souls in a sacred partnership. It prompts you to acknowledge the depth of connection shared with a significant other and the spiritual intertwining that comes with the bond of marriage.

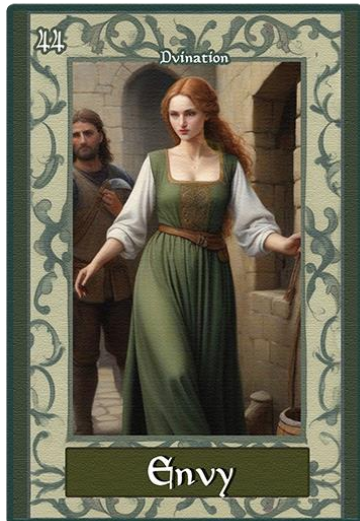
Partnership and Collaboration: Embrace the theme of partnership and collaboration. This card encourages you to recognize the strength that comes from working together with your spouse, creating a harmonious and supportive alliance in both joys and challenges.

Sacred Bond: "Marriage" embodies the sacred nature of the marital bond. It suggests that the commitment made in marriage holds a special place, one that deepens over time as you navigate life's journey together.

Commitment to Growth: The card may symbolise a commitment to growth within the marriage. It encourages you and your partner to support each other's personal and shared aspirations, fostering an environment where both individuals can flourish.

Celebration of Love: "Marriage" signifies the celebration of love. It prompts you to celebrate the milestones, triumphs, and everyday moments shared with your spouse. In doing so, you contribute to the enduring strength of your marital connection.

Guidance: Honor and celebrate the sacred bond of marriage. The "Marriage" card invites you to cherish the union you share with your spouse, fostering commitment, understanding, and a deep appreciation for the journey you embark on together.



Card Title: Envy

Key Themes: Jealousy, Comparison, Self-Reflection, Transformation

Card Description:

The "Envy" card delves into the themes of jealousy, comparison, self-reflection, and the potential for transformation. It may feature symbols of tangled vines, shadowy figures, or scenes that convey a sense of the emotional complexity surrounding envy.

Jealousy and Comparison: The "Envy" card acknowledges the presence of jealousy and the tendency to compare oneself to others. It prompts you to recognize moments of envy and the impact they may have on your emotional well-being.

Shadows of Insecurity: Embrace the theme of shadows that envy may cast on your path. This card encourages you to explore the roots of your insecurities and the reasons behind feelings of envy, allowing for a deeper understanding of the emotions at play.

Self-Reflection: "Envy" signifies a call to self-reflection. It prompts you to introspect and consider how envy may be influencing your perceptions and actions. Through self-awareness, you can begin to unravel the layers of this complex emotion.

Transformative Potential: The card may symbolise the transformative potential within envy. It suggests that by acknowledging and understanding these emotions, you can use them as catalysts for personal growth, turning the shadows of envy into sources of empowerment.

Cultivating Gratitude: "Envy" encourages the cultivation of gratitude. It prompts you to shift your focus from what others have to what you are grateful for in your own life, fostering a mindset that appreciates the unique journey you are on.

Guidance: Acknowledge moments of envy with compassion and use them as opportunities for self-reflection. The "Envy" card invites you to explore the transformative potential within this emotion, allowing it to guide you towards a path of personal growth and gratitude.



Card Title: Abundance

Key Themes: Prosperity, Overflowing Blessings, Gratitude, Manifestation, Luxury , Wealth

Card Description:

The "Abundance" card radiates with themes of prosperity, overflowing blessings, gratitude, and the manifestation of abundance in various aspects of life. It may feature symbols of lush gardens, cornucopias, or scenes that evoke a sense of opulence and fulfilment.

Prosperity in All Forms: The "Abundance" card signifies the presence of prosperity in all aspects of your life. It prompts you to recognize the abundance that surrounds you, not only in material wealth but also in love, joy, and spiritual fulfilment.

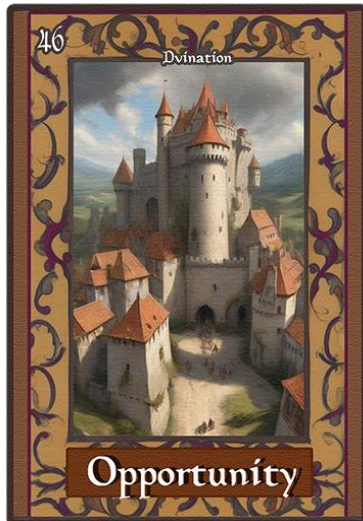
Overflowing Blessings: Embrace the theme of overflowing blessings. This card encourages you to acknowledge and celebrate the abundance that flows into your life, symbolising a time of plenty, fulfilment, and a sense of richness in your experiences.

Gratitude and Appreciation: "Abundance" embodies the importance of gratitude and appreciation. It prompts you to express thanks for the abundance you have received and to cultivate a mindset of appreciation, attracting even more blessings into your life.

Manifestation Power: The card may symbolise the manifestation power within you. It suggests that your thoughts and intentions have the ability to attract abundance. Embrace the energy of creation, focusing on positive aspirations and attracting what you desire.

Wealth of Spirit: "Abundance" goes beyond material wealth, signifying a wealth of spirit. It encourages you to recognize the abundance of love, wisdom, and positive connections that contribute to your overall well-being.

Guidance: Celebrate the abundance in your life with gratitude and openness. The "Abundance" card invites you to align with the flow of prosperity, manifest positive intentions, and appreciate the richness that surrounds you in various forms.



Card Title: Opportunity

Key Themes: Possibilities, Open Doors, Fortuitous Moments, Seizing the Moment , Upgrade , Chance

Card Description:

The "Opportunity" card radiates with themes of possibilities, open doors, fortuitous moments, and the importance of seizing the opportunities that present themselves. It may feature symbols of open gates, keys, or scenes that convey a sense of readiness and receptivity to new prospects.

Possibilities Unveiled: The "Opportunity" card signifies the unveiling of possibilities. It prompts you to be attentive to the openings and opportunities that may appear on your path, offering the potential for growth and positive change.

Open Doors: Embrace the theme of open doors. This card encourages you to recognize the doors that are opening in your life, leading to new experiences, relationships, or endeavours. Approach these openings with curiosity and a willingness to explore.

Fortuitous Moments: "Opportunity" embodies fortuitous moments that can shape your journey. It suggests that serendipity and positive synchronicities may be at play. Stay open to unexpected turns, as they may lead to transformative and enriching experiences.

Seizing the Moment: The card may symbolise the importance of seizing the moment. It encourages you to take action when opportunities arise, trusting in your abilities to navigate new paths and make the most of the chances presented to you.

Readiness and Receptivity: "Opportunity" prompts you to cultivate a state of readiness and receptivity. Be open to receiving the gifts that life has to offer, and trust that you are well-prepared to embrace the opportunities that come your way.

Guidance: Embrace the spirit of opportunity with an open heart and a proactive mindset. The "Opportunity" card invites you to be aware of the possibilities around you, seize the moment, and embark on a journey of growth and fulfilment.



Card Title: Arrival

Key Themes: New Beginnings, Welcoming Change, Anticipation, Fulfilment, Arrival , Worth Wating

Card Description:

The "Arrival" card radiates with themes of new beginnings, welcoming change, the anticipation of positive shifts, and the fulfilment of long-awaited aspirations. It may feature symbols of open doors, rising suns, or scenes that evoke a sense of readiness and the joyous arrival of transformative moments.

New Beginnings: The "Arrival" card signifies the dawn of new beginnings. It prompts you to embrace the fresh opportunities and chapters unfolding in your life, symbolising the commencement of a journey filled with potential and promise.

Welcoming Change: Embrace the theme of welcoming change. This card encourages you to recognize the positive shifts that are occurring. Approach change with an open heart, knowing that it brings the potential for growth, learning, and exciting new experiences.

Anticipation and Excitement: "Arrival" embodies the anticipation and excitement that come with positive developments. It suggests that you are on the brink of something wonderful, urging you to savour the anticipation and look forward to the fulfilment of your dreams.

Fulfilment of Aspirations: The card may symbolise the fulfilment of long-awaited aspirations. It encourages you to celebrate the achievements and milestones that are manifesting in your life, recognizing the journey that has led you to this moment of arrival.

Joyous Transition: "Arrival" prompts you to view transitions joyously. Whether it's a change in circumstances, relationships, or personal growth, approach these transitions with a sense of celebration, acknowledging the positive energy they bring.

Guidance: Embrace the sense of arrival with gratitude and enthusiasm. The "Arrival" card invites you to recognize and celebrate the new beginnings and positive shifts in your life. Anticipate the fulfilment of your aspirations with a joyful heart.



Card Title: Relationship Growth

Key Themes: Partnership Evolution, Connection Deepening, Mutual Development, Harmonious Bonds

Card Description:

The "Relationship Growth" card speaks to the themes of partnership evolution, deepening connections, mutual development, and the nurturing of harmonious bonds. It may feature symbols of intertwined vines, entwined hands, or scenes that convey a sense of shared growth and flourishing love.

Partnership Evolution: The "Relationship Growth" card signifies a phase of evolution within your partnership. It prompts you to recognize the changes and developments that are occurring, fostering a deeper and more meaningful connection with your significant other.

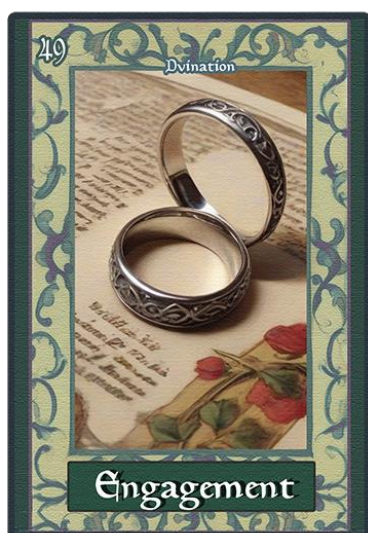
Deepening Connections: Embrace the theme of deepening connections. This card encourages you to invest time and energy into strengthening the emotional bonds within your relationship. Take moments to connect on a more profound level, fostering understanding and empathy.

Mutual Development: "Relationship Growth" embodies the concept of mutual development. It suggests that both individuals in the partnership are evolving and contributing to each other's personal growth. Celebrate the shared journey of becoming better versions of yourselves together.

Harmonious Bonds: The card may symbolize the nurturing of harmonious bonds. It encourages you to create an environment of love, respect, and support within your relationship. By fostering harmony, you contribute to the overall health and longevity of your connection.

Celebrate Milestones: "Relationship Growth" prompts you to celebrate the milestones achieved within your partnership. Whether it's overcoming challenges, reaching shared goals, or simply growing together, take moments to acknowledge and cherish these achievements.

Guidance: Embrace the journey of growth within your relationship with gratitude and intention. The "Relationship Growth" card invites you to actively participate in the evolution of your partnership, deepen connections, and celebrate the flourishing love that continues to grow between you and your significant other.



Card Title: Engagement

Key Themes: Commitment, Celebration, Union, Future Together

Card Description:

The "Engagement" card radiates with themes of commitment, celebration, the union of hearts, and the anticipation of a shared future. It may feature symbols of entwined rings, joyful faces, or scenes that convey a sense of love and the beginning of a lifelong journey together.

Commitment and Unity: The "Engagement" card signifies a profound commitment and unity between two individuals. It prompts you to acknowledge the depth of your connection and the decision to embark on a shared journey of love and companionship.

Joyful Celebration: Embrace the theme of joyful celebration. This card encourages you to celebrate the love and commitment shared between you and your partner. Take time to revel in the joy of this significant milestone in your relationship.

Union of Hearts: "Engagement" embodies the union of hearts. It suggests that your emotional and spiritual connection has reached a new level, creating a bond that transcends individuality. This card symbolises the merging of two lives into a shared existence.

Anticipation of a Future Together: The card may symbolise the anticipation of a future together. It encourages you to look forward to the journey ahead, filled with shared dreams, aspirations, and the building of a life that reflects your love and commitment to each other.

Symbol of Endless Love: "Engagement" serves as a symbol of endless love. It prompts you to recognize the enduring nature of your commitment and the potential for continued growth and deepening connection as you move forward in your relationship.

Guidance: Embrace the joy and commitment of your engagement with gratitude and excitement. The "Engagement" card invites you to celebrate the love and unity shared between you and your partner, looking forward to a future filled with shared dreams and lasting companionship.



Card Title: Challenge

Key Themes: Obstacles, Growth Opportunities, Resilience, Overcoming Difficulties

Card Description:

The "Challenge" card presents themes of obstacles, growth opportunities, resilience, and the potential for overcoming difficulties. It may feature symbols of winding paths, mountains to climb, or scenes that convey a sense of inner strength and the journey through adversity.

Obstacles to Overcome: The "Challenge" card signifies the presence of obstacles in your path. It prompts you to acknowledge the difficulties or hurdles you are currently facing and recognize them as opportunities for growth.

Growth Opportunities: Embrace the theme of growth opportunities. This card encourages you to view challenges not as roadblocks but as stepping stones toward personal and spiritual development. Each obstacle presents a chance to learn and evolve.

Resilience and Inner Strength: "Challenge" embodies the qualities of resilience and inner strength. It suggests that you have the power to endure and overcome challenges, drawing upon your inner resources and tapping into a well of strength you may not have realised you possessed.

Navigating the Journey: The card may symbolise the journey through adversity. It encourages you to navigate challenges with courage and determination, trusting that each step forward, no matter how small, brings you closer to the resolution and growth you seek.

Transformation through Difficulty: "Challenge" prompts you to recognize the transformative potential within difficulties. Just as a seed must face challenges to sprout and grow, your challenges can lead to profound personal transformation when faced with resilience and an open heart.

Guidance: Face your challenges with courage and an open mind. The "Challenge" card invites you to embrace the opportunities for growth and transformation that come with overcoming difficulties. Trust in your ability to navigate the journey and emerge stronger on the other side.



Card Title: Enchanted

Key Themes: Magical Love, Whimsical Hope, Delightful Connections, Otherworldly Romance, Rose

Card Description:

The "Enchanted" card unfolds a tale of magical love, whimsical hope, delightful connections, and the enchanting dance of otherworldly romance. The card featured symbols of an eternal rose which define endless connection and hope for romance.

Magical Love: The "Enchanted" card signifies the presence of magical love in your life. It prompts you to recognize and celebrate the extraordinary, deep, and enchanting connections that exist in your relationships.

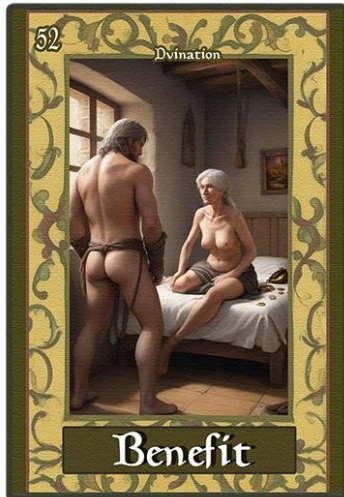
Whimsical Hope: Embrace the theme of whimsical hope. This card encourages you to nurture a hope that sparkles with magic, transcending everyday expectations and allowing your heart to believe in the extraordinary possibilities that love can bring.

Delightful Connections: "Enchanted" embodies the delight found in connections. It suggests that your relationships are imbued with a sense of wonder and joy, inviting you to cherish the delightful moments and the enchanting bond you share with others.

Otherworldly Romance: The card may symbolise the presence of otherworldly romance. It encourages you to explore the mystical and magical elements within your love life, acknowledging the extraordinary depth and connection that makes your romance truly enchanting.

Awakening the Spirit of Love: "Enchanted" prompts you to awaken the spirit of love within you. It invites you to infuse your relationships with a sense of magic, allowing the extraordinary qualities of love to shine brightly and illuminate your shared journey.

Guidance: Open your heart to the enchantment of love and the whimsy of hope. The "Enchanted" card invites you to celebrate the magical qualities within your relationships, allowing love and hope to weave a tapestry of wonder, joy, and everlasting connection.



Card Title: Benefit

Key Themes: Reciprocity, Collaboration, Negotiation, Guarding Boundaries, Friends with Benefits , Give and Take , Beneficial.

Card Description:

The "Benefit" card unfolds a narrative of reciprocity, collaboration, negotiation, and the importance of guarding your boundaries. It may feature symbols of scales, intertwined hands, or scenes that convey a sense of balance, fairness, and the dynamic interplay of give-and-take.

Reciprocity in Relationships: The "Benefit" card signifies the dynamics of reciprocity in your relationships. It prompts you to be mindful of the give-and-take, encouraging healthy exchanges that benefit both parties involved.

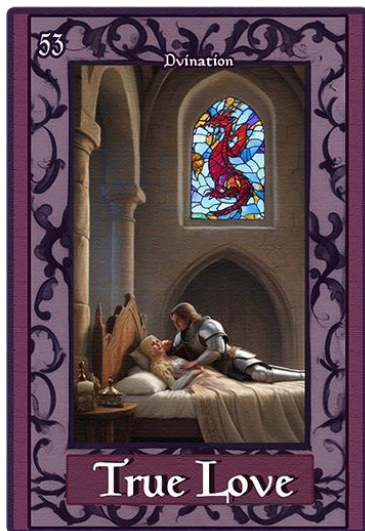
Collaborative Opportunities: Embrace the theme of collaboration. This card encourages you to explore collaborative opportunities where mutual benefits can be achieved. Look for partnerships that honour and contribute to the well-being of all involved.

Negotiating Fair Terms: "Benefit" embodies the art of negotiating fair terms. It suggests that, in various aspects of your life, there is a need to ensure that exchanges are equitable and contribute positively to the interests of everyone involved.

Guarding Boundaries: The card may symbolise the importance of guarding your boundaries. It encourages you to be discerning about the relationships and partnerships you engage in, ensuring that mutual benefit is balanced and respects your personal limits.

Balancing Acts: "Benefit" prompts you to find a balance between giving and receiving. It encourages you to cultivate relationships that nurture both your well-being and the well-being of others, fostering a harmonious and mutually beneficial environment.

Guidance: Navigate relationships with awareness and discernment. The "Benefit" card invites you to seek collaborations that are fair, reciprocal, and respectful of boundaries, ensuring that the exchanges in your life contribute positively to the growth and well-being of everyone involved.



Card Title: True Love

Key Themes: Authentic Connection, Deep Affection, Unconditional Acceptance, Lifelong Bond

Card Description:

The "True Love" card radiates with themes of authentic connection, deep affection, unconditional acceptance, and the forging of a lifelong bond. It may feature symbols of entwined hearts, a radiant sun, or scenes that convey a profound sense of love that transcends time and circumstance.

Authentic Connection: The "True Love" card signifies the presence of an authentic and genuine connection in your life. It prompts you to recognize and celebrate the depth and sincerity of the bonds you share with others.

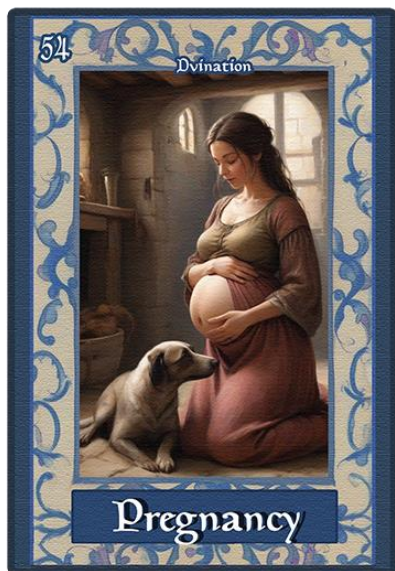
Deep Affection: Embrace the theme of deep affection. This card encourages you to explore the profound emotions and attachments that exist within your relationships, acknowledging the richness that comes from a love that runs deep.

Unconditional Acceptance: "True Love" embodies the essence of unconditional acceptance. It suggests that the love in your life is based on embracing one another for who you truly are, without judgement or expectation, fostering an environment of genuine acceptance.

Lifelong Bond: The card may symbolise the forging of a lifelong bond. It encourages you to view your relationships as enduring and steadfast, capable of withstanding the tests of time and evolving into a love that grows richer with each passing day.

Transcending Circumstances: "True Love" prompts you to recognize the ability of love to transcend circumstances. It suggests that the bonds you share with others have a resilience that allows them to endure challenges, bringing strength and unity to your connections.

Guidance: Cherish the authenticity and depth of the love in your life. The "True Love" card invites you to celebrate the connections that are characterised by genuine affection, unconditional acceptance, and the potential for a lifelong bond that continues to deepen over time.



Card Title: Pregnancy

Key Themes: Fertility, Nurturing, New Beginnings, Creation

Card Description:

The "Pregnancy" card carries themes of fertility, nurturing, new beginnings, and the concept of creation. It may feature symbols of a pregnant belly, blooming flowers, or scenes that evoke a sense of the fertile and transformative energy associated with bringing something new into existence.

Fertility and Abundance: The "Pregnancy" card signifies a period of fertility and abundance in your life. It prompts you to recognize the potential for growth, both in terms of personal development and the manifestation of new opportunities.

Nurturing Energy: Embrace the theme of nurturing energy. This card encourages you to approach aspects of your life with a caring and supportive attitude, recognizing the importance of tending to the seeds of potential and allowing them to flourish.

New Beginnings: "Pregnancy" embodies the concept of new beginnings. It suggests that you are on the brink of a transformative phase, where fresh opportunities, ideas, or projects are gestating and preparing to come to fruition.

Creation and Manifestation: The card may symbolize the process of creation and manifestation. It encourages you to actively participate in bringing your ideas and aspirations into reality, much like the gestation period before the birth of something new and significant.

Embracing Change: "Pregnancy" prompts you to embrace the changes that come with new beginnings. Just as a pregnancy brings about profound transformations, be open to the shifts and developments that are part of the creative process in your life.

Guidance: Nurture the seeds of potential within you and around you. The "Pregnancy" card invites you to celebrate the fertility and abundance in your life, recognizing the transformative power of new beginnings and the joy that comes with the creation of something meaningful.



Card Title: Twin Flame

Key Themes: Soul Connection, Mirroring, Divine Partnership, Spiritual Union

Card Description:

The "Twin Flame" card radiates with themes of soul connection, mirroring, divine partnership, and the profound union of spiritual energies. It may feature symbols of entwined flames, celestial imagery, or scenes that convey a deep and sacred connection between two souls.

Soul Connection: The "Twin Flame" card signifies a rare and profound soul connection in your life. It prompts you to recognize the presence of someone with whom you share a deep and spiritual bond, transcending the ordinary connections we experience.

Mirroring Energies: Embrace the theme of mirroring energies. This card encourages you to understand that your twin flame reflects aspects of yourself, serving as a mirror for personal growth and spiritual evolution.

Divine Partnership: "Twin Flame" embodies the concept of a divine partnership. It suggests that your connection goes beyond the mundane, reaching into the realms of a sacred union that holds significant spiritual and transformative qualities.

Spiritual Union: The card may symbolise a spiritual union between two souls. It encourages you to explore the spiritual dimensions of your relationship, recognizing the depth of understanding, compassion, and unity that exists on a soul level.

Path of Evolution: "Twin Flame" prompts you to view this connection as a path of evolution. Just as flames intertwine and dance, your journey with your twin flame is one of growth, learning, and the mutual elevation of your spiritual selves.

Guidance: Honor the sacred connection with your twin flame with reverence and gratitude. The "Twin Flame" card invites you to explore the depths of this soulful union, understanding the mirroring energies at play and embracing the transformative journey that unfolds as you walk the path together.



Card Title: Unicorn

Key Themes: Uniqueness, Rarity, Magical Essence, Spiritual Singular Connection , One of A Kind

Card Description:

The "Unicorn" card carries themes of uniqueness, rarity, a magical essence, and the profound experience of a spiritual singular connection. Unicorn somehow can be interpreted to evoke a sense of exclusivity, wonder, and the mystical presence of this one-of-a-kind creature.

Unparalleled Uniqueness: The "Unicorn" card signifies unparalleled uniqueness. It prompts you to acknowledge and celebrate the extraordinary nature of a particular, once-in-a-lifetime connection or opportunity in your life.

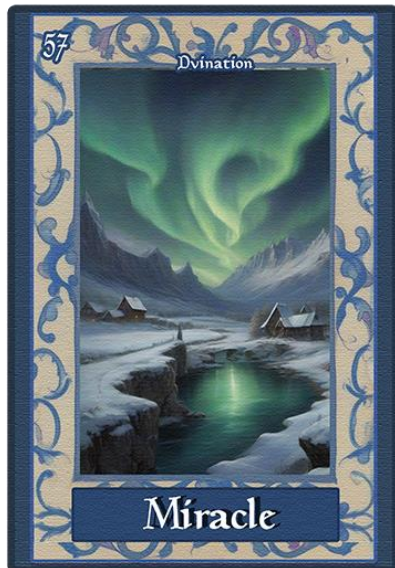
Rarity and Exclusivity: Embrace the theme of rarity and exclusivity. This card encourages you to recognize that the unicorn in your life is not just special but truly rare, highlighting the extraordinary and exceptional qualities that make it stand out.

Magical Essence: "Rare Unicorn" embodies a magical essence. It suggests that the presence of this unique unicorn brings a touch of enchantment to your life, infusing your journey with a rare and extraordinary magic that is seldom experienced.

Spiritual Singular Connection: The card may symbolise a spiritual singular connection. It encourages you to understand that this unicorn represents a one-of-a-kind spiritual bond, serving as a guide, guardian, or companion on your unique and special journey.

Symbol of Divine Presence: "Rare Unicorn" serves as a symbol of divine presence. It prompts you to view this extraordinary connection as a gift from the universe, a rare and sacred presence that holds spiritual significance in your life.

Guidance: Cherish the rarity and uniqueness of this exceptional connection. The "Rare Unicorn" card invites you to fully appreciate and honour the extraordinary qualities that make this bond or opportunity one of a kind, guiding you on a path of spiritual enrichment and profound experiences.



Card Title: Miracle

Key Themes: Divine Intervention, Unexpected Blessings, Transcendence, Gratitude

Card Description:

The "Miracle" card radiates with themes of divine intervention, unexpected blessings, transcendence, and the importance of gratitude. It may feature symbols of an Aurora light, celestial wonders, radiant light, or scenes that convey a sense of awe, wonder, and the miraculous unfolding of extraordinary events.

Divine Intervention: The "Miracle" card signifies the presence of divine intervention in your life. It prompts you to recognize that there are forces beyond the ordinary at play, orchestrating events in a way that transcends the natural course of things.

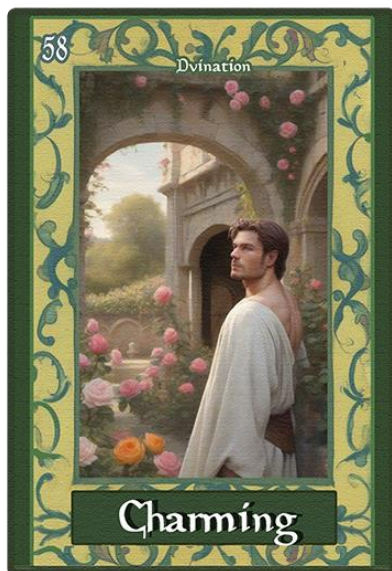
Unexpected Blessings: Embrace the theme of unexpected blessings. This card encourages you to be open to the extraordinary and serendipitous gifts that life may bestow upon you, reminding you that miracles often arise when least expected.

Transcendence of Limitations: "Miracle" embodies the concept of transcending limitations. It suggests that the miraculous events in your life have the power to uplift you, break through barriers, and propel you beyond the confines of ordinary expectations.

Gratitude for Wonders: The card may symbolize the importance of gratitude for the wonders in your life. It encourages you to appreciate and express gratitude for the miraculous occurrences, recognizing them as gifts that bring joy, inspiration, and a sense of the extraordinary.

Symbol of Hope: "Miracle" serves as a symbol of hope. It prompts you to maintain a hopeful and optimistic outlook, trusting that even in challenging times, there is the potential for miraculous breakthroughs that can bring about positive transformation.

Guidance: Be open to the miraculous and express gratitude for the wonders in your life. The "Miracle" card invites you to embrace the extraordinary events unfolding, reminding you of the divine intervention and unexpected blessings that contribute to the magic of your journey.



Card Title: Charming

Key Themes: Magnetic Presence, Physical Attractiveness, Charismatic Aura, Allure, Good Looking, Prince/Princess Charming

Card Description:

The "Charming" card embodies themes of a magnetic presence, physical attractiveness, a charismatic aura, and an irresistible allure. It may feature symbols of captivating eyes, confident posture, or scenes that convey a sense of charm that emanates from a person's physical presence.

Magnetic Presence: The "Charming" card signifies a magnetic and compelling presence. It prompts you to recognize the captivating aura that someone exudes, drawing others in through their physical charm and allure.

Physical Attractiveness: Embrace the theme of physical attractiveness. This card encourages you to appreciate and celebrate the beauty and charm that radiates from a person's physical appearance, recognizing the impact it has on those around them.

Charismatic Aura: "Charming" embodies a charismatic aura. It suggests that the charm observed is not merely superficial but is infused with a magnetic energy that captivates and leaves a lasting impression on those who encounter it.

Irresistible Allure: The card may symbolise an irresistible allure. It encourages you to be mindful of the enchanting qualities that make someone physically charming, whether it be their smile, demeanour, or overall presence that leaves a lasting and positive impact.

Confidence in Expression: "Charming" prompts you to recognize the role of confidence in expression. It suggests that physical charm is often heightened by a person's self-assuredness, making them even more captivating to those around them.

Guidance: Appreciate and celebrate the physical charm and allure around you. The "Charming" card invites you to acknowledge the magnetic presence of those who exude physical charm, recognizing the positive impact it has on the atmosphere and interactions.



Card Title: Family

Key Themes: Unity, Support, Connection, Shared Bonds

Card Description:

The "Family" card radiates with themes of unity, support, connection, and the shared bonds that define a familial relationship. It may feature symbols of a family embracing, a cosy home, or scenes that convey a sense of warmth, belonging, and the strong ties that bind family members together.

Unity and Togetherness: The "Family" card signifies unity and togetherness. It prompts you to appreciate the strength that comes from being part of a family unit, where shared experiences and connections create a sense of belonging.

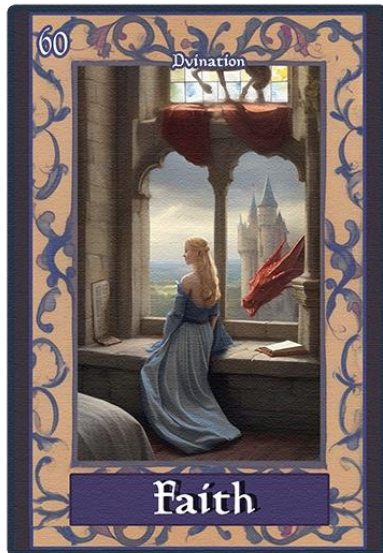
Supportive Bonds: Embrace the theme of supportive bonds. This card encourages you to recognize the support and encouragement that family members provide, fostering an environment where individuals feel accepted, understood, and supported in their endeavours.

Connection and Love: "Family" embodies the deep connections and love shared within a family. It suggests that familial relationships are rooted in a profound sense of care, affection, and the shared experiences that create a unique and unbreakable bond.

Shared Memories: The card may symbolise the importance of shared memories. It encourages you to cherish the moments, traditions, and experiences that contribute to the rich tapestry of your family history, fostering a sense of continuity and belonging.

Home and Security: "Family" prompts you to view your family as a source of home and security. It signifies that within the embrace of family, there is a sanctuary where individuals can find comfort, acceptance, and a sense of identity.

Guidance: Celebrate the unity and support within your family. The "Family" card invites you to value the connections and bonds that define your family relationships, recognizing the profound sense of love and belonging that comes from being part of a familial unit.



Card Title: Faith

Key Themes: Trust, Belief, Spiritual Conviction, Inner Strength

Card Description:

The "Faith" card radiates with themes of trust, belief, spiritual conviction, and the inner strength that arises from unwavering faith that convey a sense of serenity, connection, and the transformative power of faith.

Trust in the Divine: The "Faith" card signifies trust in the divine. It prompts you to cultivate a deep sense of trust in a higher power, the universe, or the spiritual forces at play, recognizing that there is a purpose and guidance in your journey.

Belief in Possibilities: Embrace the theme of belief in possibilities. This card encourages you to have faith in the potential for positive outcomes, even in challenging circumstances. It's a reminder that your beliefs shape your reality.

Spiritual Conviction: "Faith" embodies spiritual conviction. It suggests that your faith is a powerful force that can provide strength, comfort, and guidance, especially during times of uncertainty or adversity.

Inner Strength: The card may symbolise the inner strength that arises from faith. It encourages you to tap into the reservoir of strength within, derived from your unwavering belief in the goodness of life and the inherent resilience of your spirit.

Serenity and Connection: "Faith" prompts you to find serenity and connection through faith. It signifies the peace that comes from trusting in a higher purpose and being connected to a source of wisdom and guidance beyond the material realm.

Guidance: Cultivate and nurture your faith. The "Faith" card invites you to trust in the divine, believe in the possibilities, and draw strength from your spiritual conviction. Embrace the transformative power of faith as you navigate life's journey.



Card Title: Pride

Key Themes: Egotism, Overconfidence, Self-Reflection, Arrogance , Narcissistic

Card Description:

The "Pride" card explores themes of egotism, overconfidence, self-reflection, and the imperative of balancing arrogance. It may feature symbols of a mirror, scales, or scenes that convey a sense of self-examination, caution, and the transformative power of understanding and managing one's ego-driven pride.

Egotism Awareness: The "Pride" card signifies the awareness of egotism and overconfidence. It prompts you to reflect on moments when pride may be driven by ego, encouraging a deeper understanding of the motivations behind your actions.

Overconfidence and Reflection: Embrace the theme of overconfidence and reflection. This card encourages you to critically examine instances where pride may border on arrogance, fostering self-awareness and prompting you to consider the impact of your actions on yourself and others.

Balancing Arrogance: "Pride" embodies the concept of balancing arrogance. It suggests that acknowledging and addressing ego-driven pride allows for personal growth, fostering a more balanced and humble approach to interactions and relationships.

Self-Reflection: The card may symbolise the importance of self-reflection. It encourages you to regularly examine your motives and actions, allowing you to identify and temper moments of excessive pride and egotism.

Caution in Assertiveness: "Pride" prompts you to exercise caution in assertiveness. It signifies that being mindful of egotistical tendencies prevents potential conflicts, promoting healthier relationships and fostering a collaborative and understanding environment.

Guidance: Reflect on the role of pride driven by ego. The "Pride" card invites you to be aware of moments when pride may be influenced by egotism, encouraging a balanced and humble approach that embraces self-reflection, understanding, and mindfulness in your interactions.



Card Title: Manifest

Key Themes: Creation, Materialization, Intention, Power of Thought

Card Description:

The "Manifest" card radiates with themes of creation, materialisation, intention, and the transformative power of focused thought. It may feature symbols of open hands, a burst of light, or scenes that convey a sense of empowerment, clarity, and the manifestation of desires through the power of intention.

Interpretation:

Creation through Thought: The "Manifest" card signifies the power of thought in creation. It prompts you to recognize the potency of your intentions, thoughts, and beliefs in shaping your reality, emphasising the connection between your inner world and the external manifestations in your life.

Materialization of Desires: Embrace the theme of materialisation. This card encourages you to focus your thoughts and intentions on your desires, as it suggests that your deliberate and positive thinking has the potential to manifest your dreams and aspirations into tangible reality.

Intentional Living: "Manifest" embodies the concept of intentional living. It suggests that being mindful of your thoughts and setting clear intentions allows you to navigate life with purpose, clarity, and the ability to bring about positive changes.

Empowerment: The card may symbolise the empowerment that comes from manifesting your desires. It encourages you to feel empowered by your ability to shape your reality, reminding you that you have the capacity to co-create with the universe through your focused and intentional thoughts.

Clarity of Vision: "Manifest" prompts you to maintain a clear vision of your goals. It signifies that a focused and clear vision, coupled with positive intent, is a powerful catalyst for bringing about the desired outcomes in various aspects of your life.

Guidance: Harness the power of intention and focused thought. The "Manifest" card invites you to be intentional in your thoughts, beliefs, and desires, recognizing your role as a co-creator in shaping the reality you wish to experience.



Card Title: Abandoned

Key Themes: Betrayal, Isolation, Emotional Turmoil, Resentment, Ghosted, Waited For Nothing.

Card Description:

The "Abandoned" card delves into themes of betrayal, isolation, emotional turmoil, and the lingering effects of resentment. It may feature symbols of scenes that convey a sense of emotional distress, isolation, and the challenging aftermath of experiencing abandonment.

Interpretation:

Betrayal and Emotional Turmoil: The "Abandoned" card signifies a deep sense of betrayal and emotional turmoil. It prompts you to confront the pain of feeling abandoned, acknowledging the impact of broken trust and the resulting negative emotions.

Isolation and Loneliness: Embrace the theme of isolation and loneliness. This card accentuates the profound sense of being left alone, without support or understanding, fostering an environment where feelings of isolation intensify and deepen.

Resentment and Lingering Residue: "Abandoned" embodies the concept of resentment and lingering emotional residue. It suggests that the experience of abandonment leaves behind a bitter aftertaste, fostering resentment and making it challenging to move forward without carrying emotional baggage.

Distrust and Scepticism: The card may symbolise the development of distrust and scepticism. It encourages you to be wary of forming new connections, as the negative experience of abandonment may colour your perceptions and make it difficult to trust others.

Struggling to Rebuild: "Abandoned" prompts you to acknowledge the difficulties in rebuilding after abandonment. It signifies the struggle to overcome the negative aftermath, highlighting the challenges in moving forward and forming new connections.

Guidance: Confront and navigate the negative emotions. The "Abandoned" card invites you to acknowledge the pain of betrayal, isolation, and resentment, recognizing the difficulties in rebuilding trust and emotional well-being after a negative experience of abandonment.



Card Title: Separation

Key Themes: Distance, Transition, Growth, Temporary Disconnection , Break-up , Time Apart ,

Card Description:

The "Separation" card explores themes of distance, transition, growth, and the understanding that separation is often a temporary disconnection rather than a permanent parting. It may feature scenes that convey a sense of space, transformation, and the potential for positive change during periods of separation.

Distance and Reflection: The "Separation" card signifies the presence of physical or emotional distance. It prompts you to acknowledge the need for space and reflection, recognizing that separation can provide an opportunity for personal growth and self-discovery.

Transition and Transformation: Embrace the theme of transition and transformation. This card encourages you to view separation as a period of change, emphasising the potential for personal development, learning, and positive transformations during this time.

Temporary Disconnection: "Separation" embodies the concept of temporary disconnection. It suggests that, while separation may be challenging, it is often a phase that leads to new insights, perspectives, and a renewed sense of connection once the period of separation comes to an end.

Growth through Independence: The card may symbolise the growth that comes through independence. It encourages you to embrace the opportunities for self-reliance and personal development that separation can offer, fostering a stronger and more resilient self.

Reunion and Reconnection: "Separation" prompts you to keep in mind the potential for reunion and reconnection. It signifies that, as the period of separation unfolds, there is the potential for coming back together with a greater understanding, appreciation, and renewed connection.

Guidance: Embrace the transformative potential of separation. The "Separation" card invites you to view the period of distance as an opportunity for growth, recognizing that temporary disconnection can lead to positive transformations and the potential for a stronger, more profound connection upon reunion.



Card Title: Letting Go

Key Themes: Release, Surrender, Liberation, Emotional Freedom

Card Description:

The "Letting Go" card radiates with themes of release, surrender, liberation, and the transformative power of embracing emotional freedom. It may feature scenes that convey a sense of catharsis, peace, and the potential for changes that comes with letting go.

Release and Surrender: The "Letting Go" card signifies the act of release and surrender. It prompts you to acknowledge and let go of emotional burdens, allowing yourself the freedom to move forward unencumbered by past attachments or concerns.

Liberation from the Past: Embrace the theme of liberation from the past. This card encourages you to break free from old patterns, grudges, or emotional baggage, fostering a sense of liberation that opens up new possibilities for personal growth and happiness.

Renewed Energy: "Letting Go" embodies the concept of renewed energy. It suggests that releasing what no longer serves you creates space for positive energy, rejuvenation, and a fresh perspective on life's challenges and opportunities.

Embracing Emotional Freedom: The card may symbolise the importance of embracing emotional freedom. It encourages you to let go of attachments that hinder your emotional well-being, fostering a sense of inner peace and tranquillity.

Positive Change: "Letting Go" prompts you to see the potential for positive change. It signifies that the act of letting go is a catalyst for transformation, creating the conditions for personal and spiritual growth as you release what no longer aligns with your highest good.

Guidance: Embrace the transformative power of letting go. The "Letting Go" card invites you to release emotional burdens, surrender to the flow of life, and experience the freedom that comes with releasing what no longer serves your highest good.



Card Title: Fulfilment

Key Themes: Completion, Satisfaction, Achievement, Inner Contentment, Wish Came True, Satisfaction

Card Description:

The "Fulfillment" card radiates with themes of completion, satisfaction, achievement, and the transformative joy that comes with inner contentment. It may feature symbols of scenes that convey a sense of wholeness, accomplishment, and the potential for positive growth after reaching a state of fulfilment.

Completion of Goals: The "Fulfillment" card signifies the completion of goals. It prompts you to acknowledge and celebrate your achievements, recognizing the effort and dedication that have led to a state of fulfilment and completion.

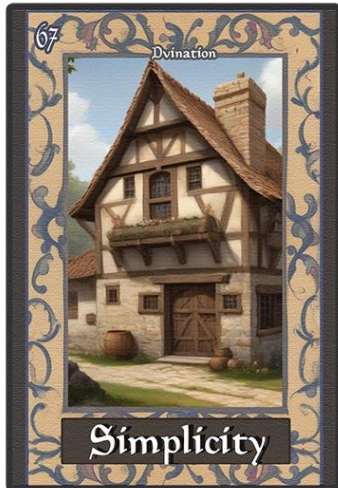
Satisfaction and Contentment: Embrace the theme of satisfaction and contentment. This card encourages you to bask in the joy of achieving your aspirations, fostering a sense of inner contentment that arises from recognizing and appreciating your accomplishments.

Acknowledgment of Success: "Fulfillment" embodies the concept of acknowledging success. It suggests that taking the time to recognize and celebrate your achievements contributes to a positive mindset, encouraging further success and personal growth.

Wholeness and Integration: The card may symbolise a sense of wholeness and integration. It encourages you to see how your achievements contribute to your overall well-being, creating a harmonious and balanced life that reflects your values and aspirations.

Positive Growth: "Fulfillment" prompts you to view the state of fulfilment as a catalyst for positive growth. It signifies that the joy derived from accomplishing your goals can propel you forward, inspiring new dreams and endeavours.

Guidance: Embrace the transformative joy of fulfilment. The "Fulfillment" card invites you to acknowledge and celebrate your achievements, fostering a sense of satisfaction and inner contentment that serves as a foundation for continued positive growth.



Card Title: Simplicity

Key Themes: Minimalism, Clarity, Ease, Uncomplicated Living , Simple Life

Card Description:

The "Simplicity" card radiates with themes of minimalism, clarity, ease, and the transformative power of embracing uncomplicated living. It may feature symbols, or scenes that convey a sense of simplicity, tranquillity, and the potential for positive change that comes with simplifying various aspects of your life.

Minimalism and Clarity: The "Simplicity" card signifies the beauty of minimalism and clarity. It prompts you to simplify your surroundings, thoughts, and actions, allowing for a clearer understanding of your priorities and a more tranquil state of mind.

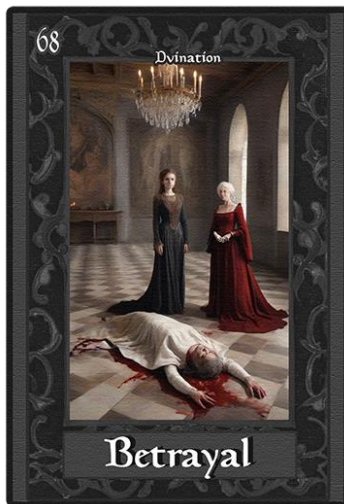
Ease and Effortlessness: Embrace the theme of ease and effortlessness. This card encourages you to streamline your life, eliminating unnecessary complexities and embracing a more straightforward approach to daily living, leading to a sense of ease and flow.

Uncomplicated Living: "Simplicity" embodies the concept of uncomplicated living. It suggests that by decluttering your physical and mental space, you create room for positive change and a more harmonious existence that aligns with your true self.

Tranquillity: The card may symbolise the tranquillity that comes with simplicity. It encourages you to simplify not only your surroundings but also your inner world, fostering a serene and peaceful state of being that allows for greater clarity and focus.

Positive Change through Simplification: "Simplicity" prompts you to recognize the potential for positive change through simplification. It signifies that by embracing a simpler, more intentional lifestyle, you open the door to transformative shifts that bring greater joy and fulfilment.

Guidance: Embrace the transformative power of simplicity. The "Simplicity" card invites you to declutter your life, both physically and mentally, fostering clarity, ease, and a more harmonious existence that aligns with your authentic self.



Card Title: Betrayal

Key Themes: Deception, Disloyalty, Emotional Wounds, Caution , Broken Trust , False Friendship , Betrayed

Card Description:

The "Betrayal" card delves into themes of deep deception, profound disloyalty, emotional wounds, and the transformative process of navigating caution and self-protection. It may feature symbols of shattered trust, or scenes that convey a sense of profound emotional pain, caution, and the need for heightened discernment after experiencing betrayal in a negative light.

Deceptive Betrayal: The "Betrayal " card signifies a level of betrayal characterised by profound deception and disloyalty. It prompts you to confront the depth of the breach of trust, acknowledging the severe emotional wounds that result.

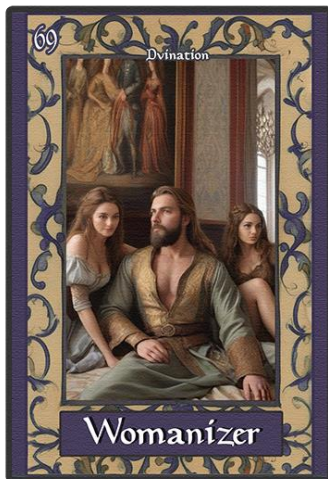
Pervasive Emotional Pain: Embrace the theme of pervasive emotional pain. This card encourages you to recognize the intensity of the emotional wounds caused by the betrayal, acknowledging the far-reaching impact on your well-being.

Heightened Caution: "Betrayal" embodies the concept of heightened caution. It suggests that, in the aftermath of a deeply negative betrayal, there is a need for increased discernment and guardedness in relationships to protect yourself from further harm.

Trust Erosion: The card may symbolise the erosion of trust on a profound level. It encourages you to acknowledge the challenges of rebuilding trust after a betrayal of this nature, emphasising the importance of self-protection and boundaries.

Need for Emotional Healing: "Betrayal " prompts you to recognize the need for extensive emotional healing. It signifies that, in the face of a negative betrayal, taking deliberate steps to heal and protect yourself emotionally is crucial for your well-being.

Guidance: Navigate the complex aftermath of a deeply negative betrayal. The "Betrayal" card invites you to acknowledge the pervasive emotional pain, exercise heightened caution, and prioritise your own emotional healing and protection.



Card Title: Womanizer

Key Themes: Charm, Superficial Relationships, Caution, Empowerment

Card Description:

The "Womanizer" card explores themes of superficial relationships, caution, and the transformative process of empowerment. It features symbols of a charming figure, broken hearts, or scenes that convey a sense of charisma, caution, and the potential for personal growth after encountering someone with a womanizing nature.

Charm and Charisma: The "Womanizer" card signifies the presence of charm and charisma. It prompts you to recognize the allure of a person who may be charming but is also known for having superficial relationships.

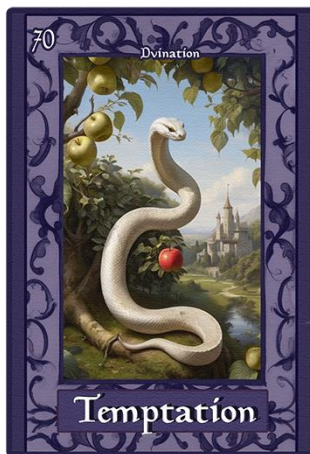
Superficial Connections: Embrace the theme of superficial connections. This card encourages you to be cautious in relationships with individuals who may prioritise short-term flings or lack genuine emotional depth, reminding you to value authenticity in connections.

Caution and Awareness: "Womanizer" embodies the concept of caution and awareness. It suggests that encountering someone with a womanizing nature requires a heightened sense of discernment, encouraging you to navigate relationships with caution and clarity.

Empowerment and Boundaries: The card may symbolise the potential for empowerment and setting boundaries. It encourages you to prioritise your own well-being, recognizing the need to establish clear boundaries and not compromising on your values in the face of charm and charisma.

Transformative Growth: "Womanizer" prompts you to see the potential for transformative growth. It signifies that navigating relationships with a womanizer can be a catalyst for personal empowerment, helping you learn valuable lessons about self-worth and the importance of genuine connections.

Guidance: Navigate relationships with caution and empowerment. The "Womanizer" card invites you to be discerning in your connections, prioritise authentic relationships, and empower yourself by setting healthy boundaries in the face of superficial charm.



Card Title: Temptation

Key Themes: Desire, Choice, Resistance, Consequences

Card Description:

The "Temptation" card explores themes of desire, choice, resistance, and the transformative process of understanding consequences. It may feature symbols of enticing objects, a snake and an apple, or scenes that convey a sense of allure, inner conflict, and the potential for growth through conscious decision-making.

Desire and Allure: The "Temptation" card signifies the presence of strong desires and allure. It prompts you to acknowledge the pull of enticing temptations and the magnetic attraction they may hold in your life.

Choice and Decision-Making: Embrace the theme of choice and decision-making. This card encourages you to recognize the power of your choices, emphasising the importance of conscious decision-making when faced with tempting situations.

Resistance and Inner Conflict: "Temptation" embodies the concept of resistance and inner conflict. It suggests that the allure of temptations often brings about internal struggles, highlighting the need to navigate these conflicts with mindfulness and self-awareness.

Consequences of Actions: The card may symbolise the understanding of consequences. It encourages you to consider the potential outcomes of succumbing to temptation, emphasising the importance of making choices that align with your values and long-term well-being.

Transformative Growth: "Temptation" prompts you to see the potential for transformative growth. It signifies that navigating through temptations with conscious decision-making can lead to personal development, increased self-control, and a deeper understanding of your own values.

Guidance: Navigate temptations with conscious decision-making. The "Temptation" card invites you to recognize the allure of desires, make choices aligned with your values, and embrace the potential for transformative growth through mindful decision-making and understanding consequences



Card Title: Trust

Key Themes: Confidence, Faith, Reliability, Mutual Understanding , Believe in Person , Safezone

Card Description:

The "Trust" card radiates with themes of confidence, faith, reliability, and the transformative power of building mutual understanding. It may feature symbols of hopeful things, or scenes that convey a sense of connection, reliability, and the potential for positive growth through trust.

Confidence and Assurance: The "Trust" card signifies the presence of confidence and assurance in a relationship or situation. It prompts you to recognize the value of trust as a foundation for mutual understanding and connection.

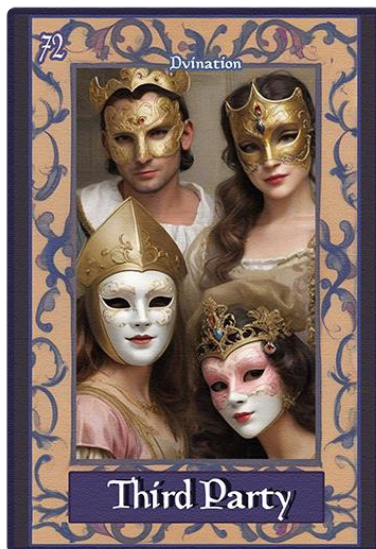
Faith in Others: Embrace the theme of faith in others. This card encourages you to have faith and confidence in the reliability of those around you, fostering an environment of trust that allows for open communication and cooperation.

Reliability and Dependability: "Trust" embodies the concept of reliability and dependability. It suggests that trust is built on a foundation of consistency, reliability, and the fulfilment of commitments, fostering a sense of security and stability.

Mutual Understanding: The card may symbolise the importance of mutual understanding. It encourages you to build trust through open communication, empathy, and a shared understanding, creating a stronger bond and connection with others.

Positive Growth through Trust: "Trust" prompts you to see the potential for positive growth. It signifies that a foundation of trust allows for personal and collective development, fostering a harmonious environment where individuals feel supported and valued.

Guidance: Embrace the transformative power of trust. The "Trust" card invites you to cultivate confidence, faith, and reliability in your relationships, fostering a sense of mutual understanding that can lead to positive growth and connection.



Card Title: Third Party

Key Themes: External Influence, Interference, Jealousy, Boundary Setting , Many Affairs , Involvement , Outside Source

Card Description:

The "Third Party" card explores themes of external influence, interference, jealousy, and the transformative process of establishing boundaries. It may feature symbols of many involved figures, overlapping circles, or scenes that convey a sense of external influences, relational complexities, and the potential for growth through setting clear boundaries.

External Influence: The "Third Party" card signifies the presence of external influences in your relationships. It prompts you to acknowledge the impact of external factors, whether they be people, situations, or influences that may affect the dynamics of your connections.

Interference and Challenges: Embrace the theme of interference and challenges. This card encourages you to recognize and navigate the complexities that arise when external parties interfere with the harmony of your relationships, prompting a need for resilience and clear communication.

Jealousy and Competition: "Third Party" embodies the concept of jealousy and competition. It suggests that there may be elements of rivalry or envy at play, emphasising the importance of addressing these emotions and fostering open communication to maintain healthy relationships.

Boundary Setting: The card may symbolise the transformative process of boundary setting. It encourages you to establish clear boundaries to protect your relationships from external interference, fostering a sense of autonomy and stability within your connections.

Potential for Growth: "Third Party" prompts you to see the potential for growth amid challenges. It signifies that navigating external influences can lead to personal and relational growth, encouraging you to strengthen connections by addressing issues head-on and setting healthy boundaries.

Guidance: Navigate external influences with resilience and clear boundaries. The "Third Party" card invites you to recognize and address external factors affecting your relationships, fostering growth and harmony through the establishment of clear boundaries.



Card Title: Make A Plan

Key Themes: Strategy, Preparation, Clarity, Goal Setting , Mission , Plan , Action

Card Description:

The "Make A Plan" card radiates with themes of strategy, preparation, clarity, and the transformative power of goal setting. It may feature symbols of a roadmap, or scenes that convey a sense of organised thinking, intentionality, and the potential for positive change through well-thought-out plans.

Interpretation:

Strategic Thinking: The "Make A Plan" card signifies the importance of strategic thinking. It prompts you to engage in organised and thoughtful planning, emphasising the impact of well-considered strategies in achieving your goals.

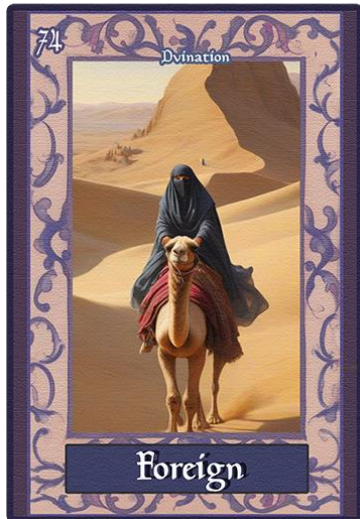
Preparation and Readiness: Embrace the theme of preparation and readiness. This card encourages you to be proactive in preparing for your endeavours, ensuring that you are equipped with the necessary tools and information to navigate challenges successfully.

Clarity of Vision: "Make A Plan" embodies the concept of clarity of vision. It suggests that creating a plan provides a clear roadmap for your aspirations, helping you maintain focus and navigate your path with a greater sense of purpose.

Goal Setting: The card may symbolise the transformative power of goal setting. It encourages you to define your objectives, breaking them down into manageable steps within a well-structured plan, fostering a sense of accomplishment as you progress toward your aspirations.

Positive Change through Planning: "Make A Plan" prompts you to see the potential for positive change. It signifies that engaging in intentional planning leads to transformative growth, empowering you to achieve your goals with a sense of purpose and direction.

Guidance: Embrace the transformative power of planning. The "Make A Plan" card invites you to engage in strategic thinking, preparation, and goal setting, providing you with a clear roadmap for positive change and personal growth.



Card Title: Foreign

Key Themes: New Perspectives, Unfamiliar Territory, Exploration, Adaptation , Foreigner , Abroad , Far Away

Card Description:

The "Foreign" card explores themes of new perspectives from Abroad or Foreign land, unfamiliar territory, exploration, and the transformative process of adaptation. It features symbols of different cultures, a compass pointing in multiple directions, or scenes that convey a sense of openness, diversity, and the potential for positive growth through embracing the unknown.

New Perspectives: The "Foreign" card signifies the introduction of new perspectives into your life. It prompts you to embrace different ways of thinking, encouraging you to expand your worldview and broaden your understanding of the world.

Unfamiliar Territory: Embrace the theme of unfamiliar territory. This card encourages you to step out of your comfort zone, acknowledging the value of exploring uncharted territory, whether it be in your personal relationships or your life journey.

Exploration and Curiosity: "Foreign" embodies the concept of exploration and curiosity. It suggests that engaging with the unfamiliar with an open mind can lead to exciting discoveries, fostering a sense of wonder and growth through new experiences.

Adaptation to Change: The card may symbolise the transformative process of adaptation to change. It encourages you to be flexible and adaptive in the face of the unknown, recognizing that embracing foreign elements can lead to personal development and resilience.

Positive Growth through Diversity: "Foreign" prompts you to see the potential for positive growth through diversity. It signifies that incorporating new perspectives and embracing the foreign can contribute to a richer, more vibrant life experience and personal evolution.

Guidance: Embrace the transformative power of the foreign. The "Foreign" card invites you to open yourself to new perspectives, explore unfamiliar territory, and adapt to change with curiosity and an open heart, fostering positive growth in your journey.



Card Title: Conflict

Key Themes: Tension, Disagreement, Resolution, Growth, Violence , Fight , Misunderstanding

Card Description:

The "Conflict" card delves into themes of tension, disagreement, resolution, and the transformative process of growth through challenges. It may feature symbols of opposing forces, tangled threads, or scenes that convey a sense of conflict, introspection, and the potential for positive change through navigating and resolving conflicts.

Tension and Disagreement: The "Conflict" card signifies the presence of tension and disagreement in a relationship , significant one or even all aspects in your life. It prompts you to acknowledge and address conflicts, whether they arise in relationships, situations, or internal struggles.

Resolution and Understanding: Embrace the theme of resolution and understanding. This card encourages you to actively seek solutions to conflicts, fostering open communication, empathy, and a willingness to find common ground for resolution.

Introspection and Growth: "Conflict" embodies the concept of introspection and growth. It suggests that navigating through conflicts provides an opportunity for personal and relational growth, as challenges often serve as catalysts for self-discovery and positive change.

Learning from Challenges: The card may symbolise the transformative process of learning from challenges. It encourages you to approach conflicts with a mindset of learning and self-improvement, recognizing that every conflict can be an opportunity for insight and development.

Positive Change through Resolution: "Conflict" prompts you to see the potential for positive change through resolution. It signifies that actively engaging with conflicts, finding common ground, and fostering understanding can lead to stronger relationships and personal development.

Guidance: Navigate conflicts with a growth mindset. The "Conflict" card invites you to address tension and disagreements with an open heart, seeking resolution through understanding and introspection, ultimately fostering positive change and personal growth.



Card Title: Observe

Key Themes: Awareness, Reflection, Patience, Insight , Being Watched , Stalker

Card Description:

The "Observe" card radiates with themes of awareness, reflection, patience, and the transformative power of gaining insight. It may feature symbols of a watchful eye, an open book, or scenes that convey a sense of stillness, contemplation, and the potential for positive growth through mindful observation.

Heightened Awareness: The "Observe" card signifies the importance of heightened awareness. It prompts you to be present in the moment, paying attention to details, and cultivating a deeper understanding of your surroundings and experiences.

Reflection and Contemplation: Embrace the theme of reflection and contemplation. This card encourages you to take moments of stillness, allowing yourself the space to reflect on your thoughts, emotions, and the events in your life with patience and openness.

Patience and Non-Attachment: "Observe" embodies the concept of patience and non-attachment. It suggests that observing without immediate judgement or reaction can lead to a more profound understanding, encouraging you to cultivate patience and detach from preconceived notions.

Insightful Learning: The card may symbolise the transformative process of gaining insightful learning. It encourages you to approach life with a curious and open mind, recognizing that every observation offers an opportunity for learning, personal growth, and positive change.

Mindful Presence: "Observe" prompts you to see the potential for positive growth through mindful presence. It signifies that by actively observing and being present in your experiences, you can gain valuable insights that contribute to a more conscious and fulfilling life.

Guidance: Embrace the transformative power of observation. The "Observe" card invites you to cultivate awareness, practice reflection, and approach life with patience and an open heart, ultimately gaining valuable insights that lead to positive growth.



Card Title: Childish

Key Themes: Playfulness, Innocence, Spontaneity, Embracing Joy , Childhood , Immature

Card Description:

The "Childish" card explores themes of playfulness, innocence, immaturity , spontaneity, and the transformative power of embracing joy in the present moment. It may feature symbols of children, laughter, or scenes that convey a sense of carefree energy and the potential for reconnecting with the childlike spirit within.

Interpretation:

Playful Energy: The "Childish" card signifies the infusion of playful immature energy into your life. It prompts you to embrace the spirit of playfulness, encouraging laughter, joy, and a carefree approach to experiences.

Innocence and Wonder: Embrace the theme of innocence and wonder. This card encourages you to rediscover the beauty in simple things, approach life with wide-eyed curiosity, and appreciate the magic in everyday moments.

Spontaneity and Freedom: "Childish" embodies the concept of spontaneity and freedom. It suggests that being open to spontaneity can lead to unexpected adventures, fostering a sense of freedom and lightness in your journey.

Creative Expression: The card may symbolise the transformative process of creative expression. It encourages you to tap into your creative side, whether through art, play, or imaginative thinking, fostering personal growth and innovation.

Positive Growth through Joy: "Childish" prompts you to see the potential for positive growth through joy. It signifies that by reconnecting with the carefree and joyful spirit of your inner child, you can experience a renewed sense of vitality and enthusiasm for life.

Guidance: Embrace the transformative power of playfulness. The "Childish" card invites you to infuse your life with innocent joy, spontaneity, and creative expression, ultimately fostering positive growth and a deeper connection to the playful spirit within.



Card Title: Reconciliation

Key Themes: Healing, Forgiveness, Harmony, Renewed Connections , Return of Past Lover

Card Description:

The "Reconciliation" card radiates with themes of healing, forgiveness, harmony, and the transformative power of renewed connections. It may feature symbols of clasped hands, a heart mending, or scenes that convey a sense of emotional healing, reconciliation, and the potential for positive growth through the restoration of relationships.

Healing and Forgiveness: The "Reconciliation" card signifies the presence of healing and forgiveness in your relationships. It prompts you to embrace the transformative power of letting go of past grievances and fostering an environment of emotional healing.

Harmony in Relationships: Embrace the theme of harmony in relationships. This card encourages you to seek common ground, build bridges, and cultivate a sense of unity and understanding, fostering harmonious connections with others.

Renewed Connections: "Reconciliation" embodies the concept of renewed connections. It suggests that the willingness to reconcile can lead to the restoration of relationships, creating opportunities for deeper connections and mutual growth.

Empathy and Compassion: The card may symbolise the transformative process of practising empathy and compassion. It encourages you to understand the perspectives of others, fostering a deeper sense of connection and unity through shared understanding.

Positive Growth through Reconciliation: "Reconciliation" prompts you to see the potential for positive growth. It signifies that by actively engaging in the process of reconciliation, you contribute to the growth of relationships, creating a foundation for renewed trust and harmony.

Guidance: Embrace the transformative power of reconciliation. The "Reconciliation" card invites you to prioritise healing, forgiveness, and understanding in your relationships, fostering a renewed sense of connection and harmony that leads to positive growth.



Card Title: Soul Mate

Key Themes: Deep Connection, Spiritual Bond, Unconditional Love, Synchronicity , Destiny , Fate

Card Description:

The "SoulMate" card resonates with themes of deep connection, spiritual bonds, unconditional love, and the transformative power of synchronicity. It may feature symbols of intertwined hearts, cosmic elements, or scenes that convey a sense of profound connection and the potential for positive growth through soulful relationships.

Deep Connection: The "SoulMate" card signifies a deep, soulful connection between individuals. It prompts you to recognize and appreciate the profound bond that exists on a spiritual level, transcending the ordinary and creating a unique and harmonious connection.

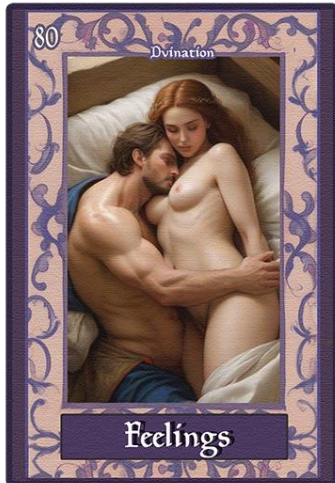
Spiritual Bond: Embrace the theme of a spiritual bond. This card encourages you to explore the spiritual aspects of your connection, recognizing the soul-level resonance that goes beyond the physical and emotional realms.

Unconditional Love: "SoulMate" embodies the concept of unconditional love. It suggests that the connection between soul mates is characterised by a love that transcends conditions, fostering acceptance, and mutual growth.

Synchronicity and Alignment: The card may symbolise the transformative process of synchronicity and alignment. It encourages you to observe the serendipitous events and meaningful coincidences that unfold, recognizing them as signs of the alignment of your paths.

Positive Growth through Connection: "SoulMate" prompts you to see the potential for positive growth. It signifies that a soulful connection contributes to personal and mutual development, fostering a relationship that enriches both individuals on their spiritual journeys.

Guidance: Embrace the transformative power of soulful connections. The "SoulMate" card invites you to appreciate and nurture the deep, spiritual bond you share with someone, fostering unconditional love, synchronicity, and positive growth in your relationship.



Card Title: Feelings

Key Themes: Emotional Connection, Vulnerability, Expressiveness, Relationship Dynamics, Infatuation

Card Description:

The "Feelings" card delves into themes of emotional connection, vulnerability, expressiveness, and the transformative power of understanding and navigating relationship dynamics. It may feature symbols of intertwined hearts, flowing emotions, or scenes that convey a sense of emotional depth and the potential for positive growth through honest and open expression of feelings.

Emotional Connection: The "Feelings" card signifies the importance of emotional connection in love. It prompts you to explore and acknowledge the depth of emotions within your relationship, recognizing the transformative power of shared feelings.

Vulnerability and Openness: Embrace the theme of vulnerability and openness. This card encourages you to be open and honest about your emotions, fostering an environment where both partners feel safe to express their true feelings without fear of judgement.

Expressiveness: "Feelings" embodies the concept of expressiveness. It suggests that the act of expressing feelings, whether through words, gestures, or actions, contributes to the richness and depth of your connection, fostering a sense of intimacy.

Understanding Relationship Dynamics: The card may symbolize the transformative process of understanding relationship dynamics. It encourages you to navigate the ebb and flow of emotions within the relationship, recognizing that understanding each other's feelings contributes to positive growth.

Positive Growth through Emotional Connection: "Feelings" prompts you to see the potential for positive growth. It signifies that embracing and understanding the range of emotions within the relationship leads to personal and mutual development, deepening the bond between partners.

Guidance: Embrace the transformative power of shared feelings. The "Feelings" card invites you and your partner to explore, express, and understand the emotions within your relationship, fostering a deeper connection and positive growth through open communication.

The End.

Artwork by Irina Lilith & Dvination

More information please visit our website

www.Dvination.com

