

A dramatic scene of a fire at night. In the foreground, a large fire truck and a fire engine are parked on a road. In the background, a large fire is burning, with a tall, dark structure, possibly a silo or tower, standing in the center. The sky is filled with thick, dark smoke and a bright orange glow from the fire. The overall atmosphere is one of an emergency situation.

**What if it happened here?**

**Public Entity Best Practices  
Before the Emergency**

# OBJECTIVES

---

- Discuss the National Incident Management System.
- Understand how a large-scale incident expands and resources are obtained in Ohio.
- Understand the expectations for public administrators and public servants with non first responder roles.
- Provide an overview of fiscal administration responsibilities.
- Obtain resources and training to better prepare your administration.
- Understand the process of EOPs and exercises.



# WHY ARE WE HERE?

---







**Nothing ever  
happens  
here...**



# Train crashes in Clark County; fourth Norfolk Southern derailment in Ohio in five months

WYSO | By [Samantha Sommer](#), [Kathryn Mobley](#)  
Published March 4, 2023 at 9:54 PM EST



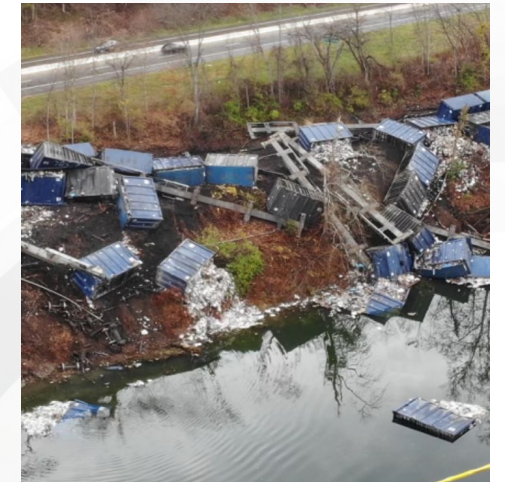
Sandusky 2022



Springfield 2023



East Palestine 2023



Toronto, OH 2022



Painesville, Ohio 2007







**“We don’t have trains”**

---

Lac Megantic Train Disaster

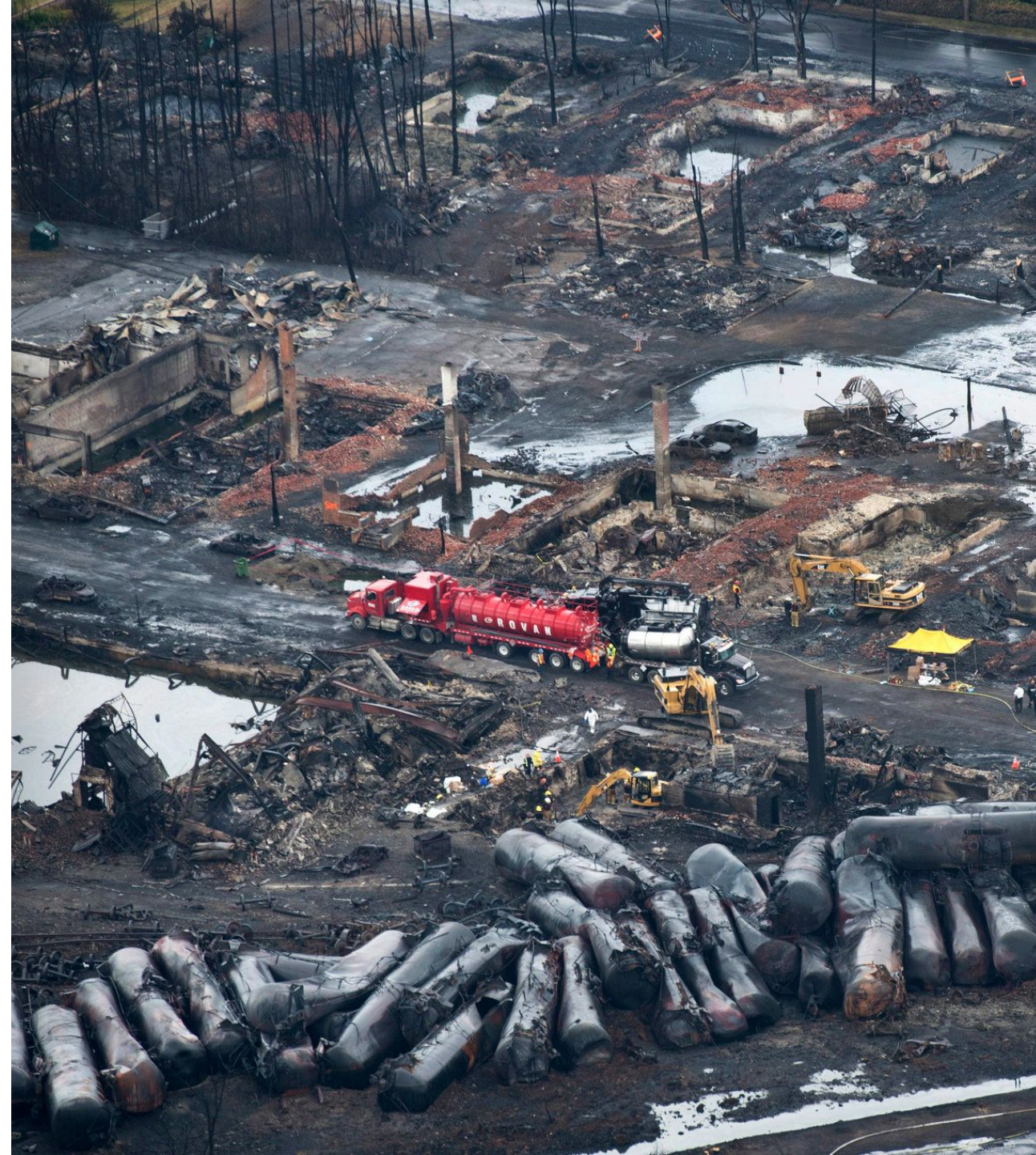
July 6, 2013





# Lac-Mégantic, Train Disaster 2013

- 73 cars derailed with crude oil.
- 47 People killed.
- More than 30 downtown buildings destroyed.
- All but 3 of 39 remaining buildings had to be demolished.





# Lac Megantic – After Action Report

---

- Incident Command was a significant challenge.
- Large number of responding agencies
- Lack of ICS understanding
- Canadian and American federal assets response integration was difficult
- Obtaining resources quickly
- Communication issues
- Need for clear understanding of the roles and responsibilities of the local government and the private sector organization
- Local “Authority Having Jurisdiction” must determine incident commander
- Unified Command Structure needed with pertinent parties involved
- Training and preparation prior before the incident





# National Incident Management System

*Third Edition  
October 2017*



FEMA



# National Incident Management System (NIMS)

---

NIMS guides all levels of local government, nongovernmental organizations and the private sector to work together to prevent, protect against, mitigate, respond to and recover from incidents.

NIMS provides stakeholders across the whole community with the shared vocabulary, systems and processes to successfully deliver the capabilities described in the National Preparedness System.

**NIMS defines operational systems that guide how personnel work together during incidents.**

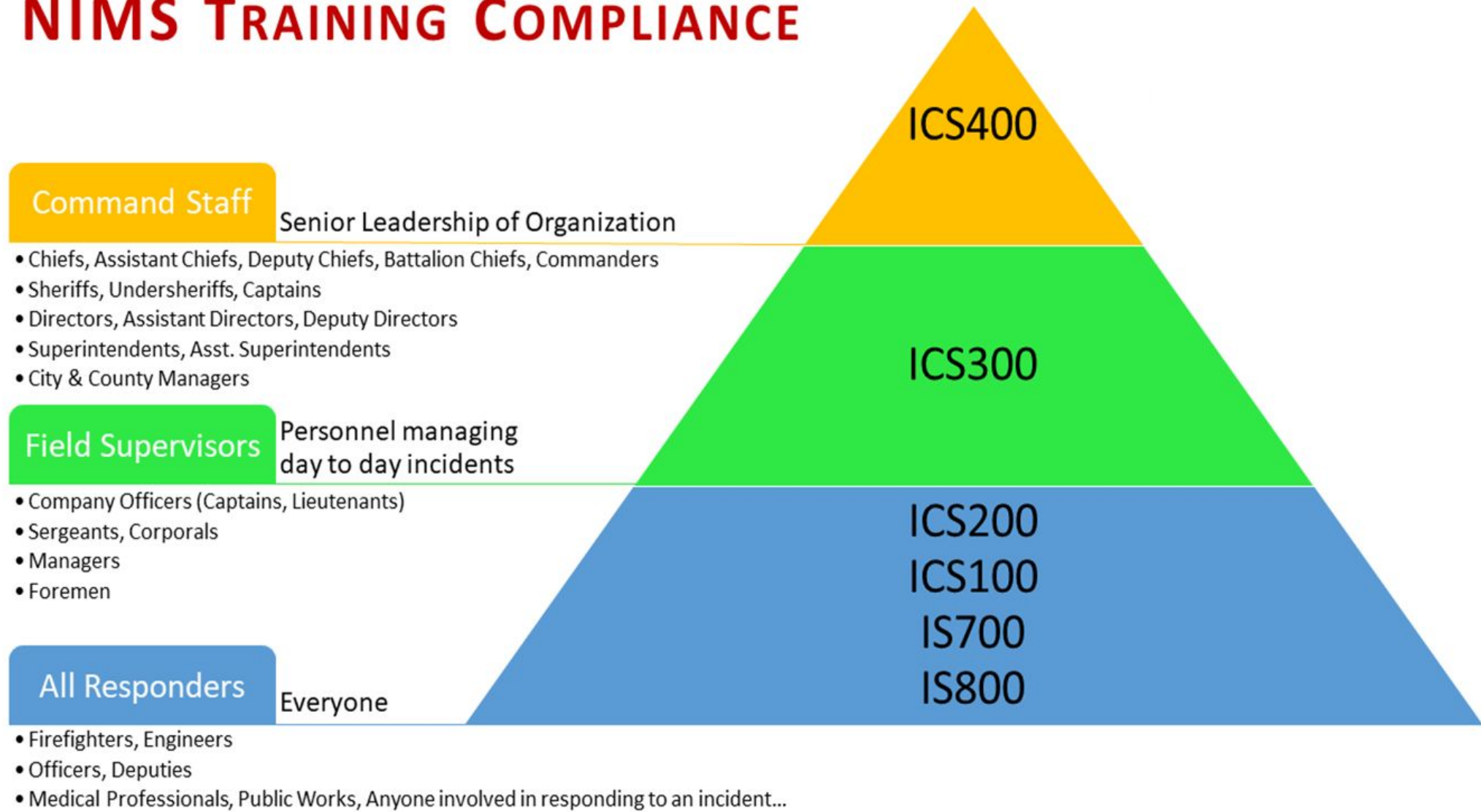


# NIMS Components





# NIMS TRAINING COMPLIANCE

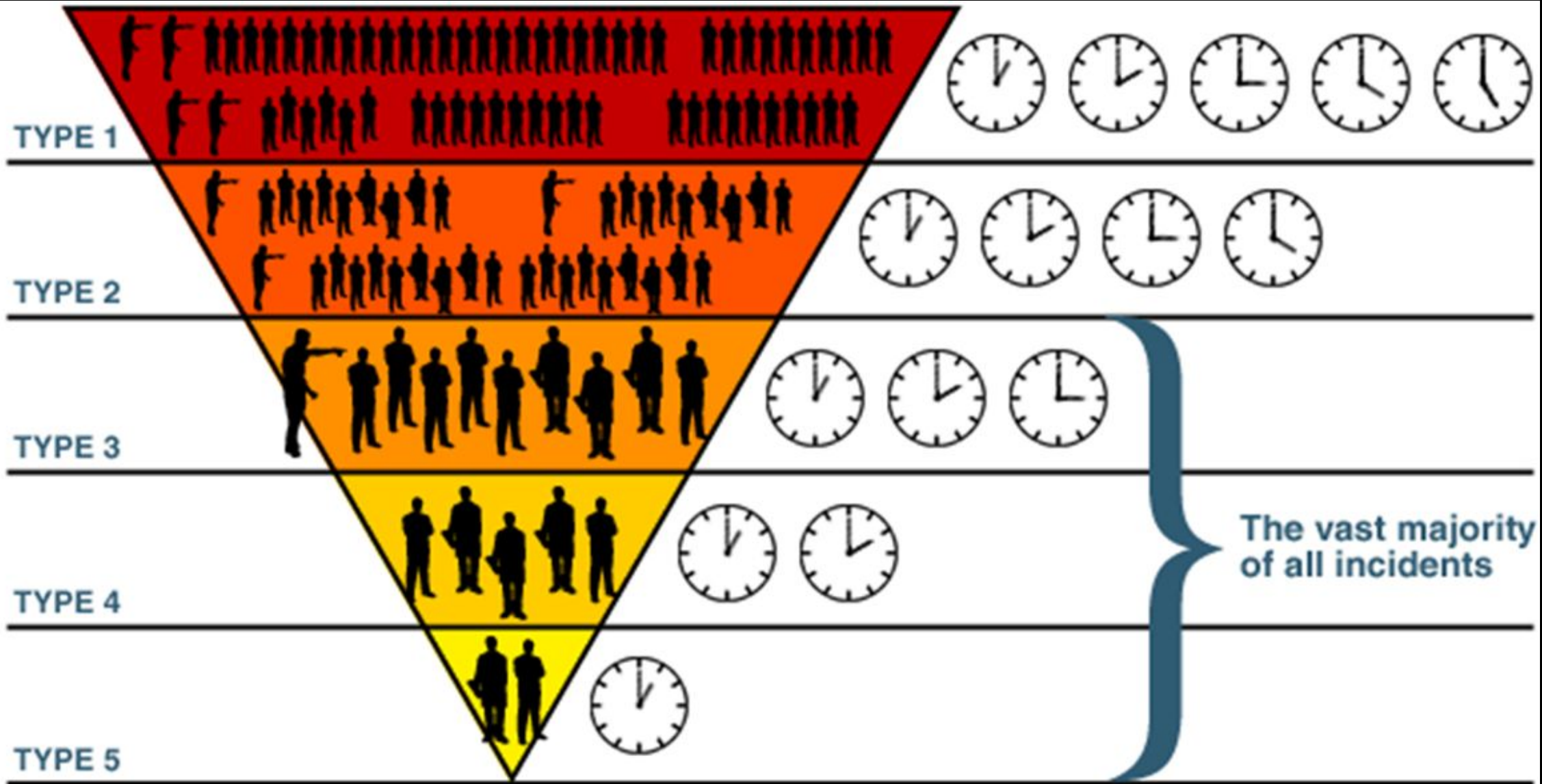


# HOW AN INCIDENT EXPANDS

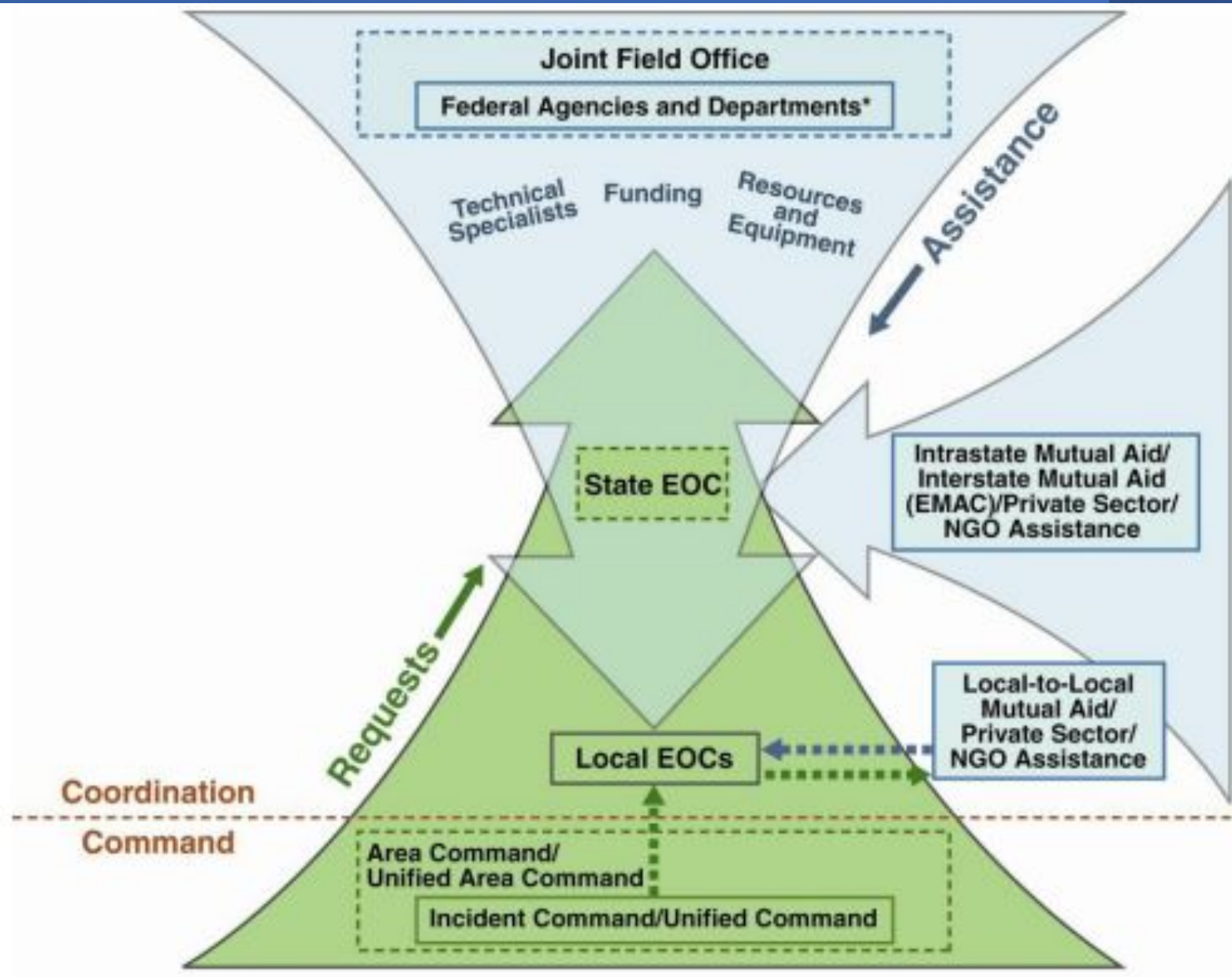
---








The vast majority of all incidents





# HELP?

**Ohio Fire Chiefs Association**  
Emergency Response System



**OHIO FUNERAL  
DIRECTORS  
ASSOCIATION**

Clergy Community Assistance Network (CCAN)

**Ohio**

**Department  
of Health**



OHWARN



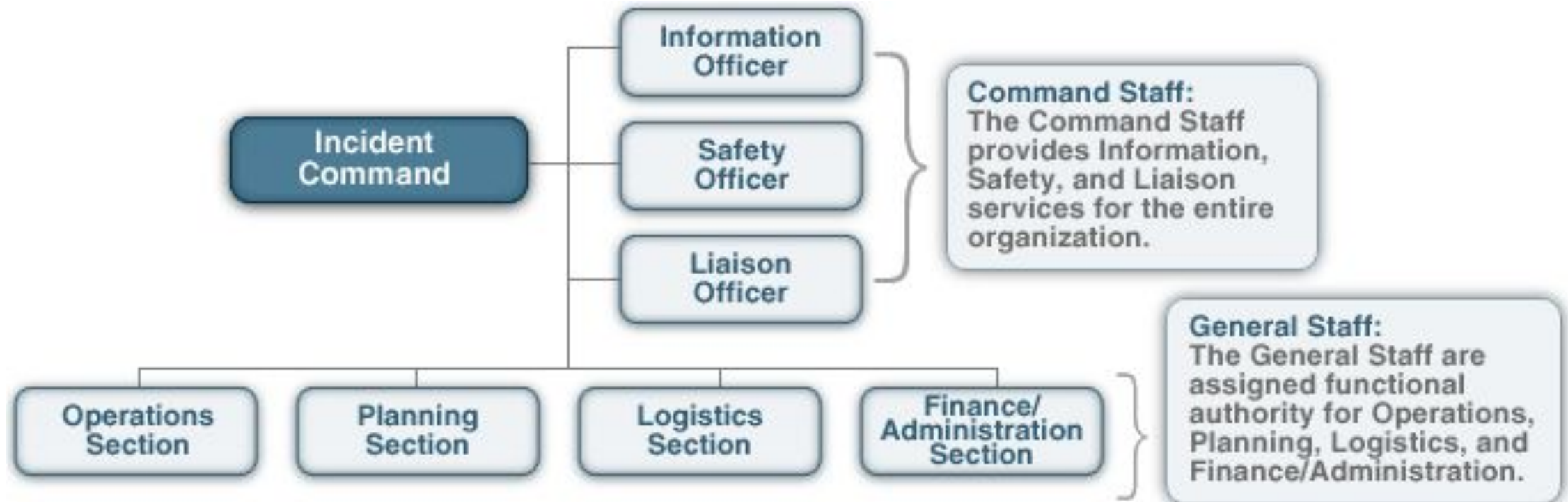
# ICS STRUCTURE DEVELOPS

---

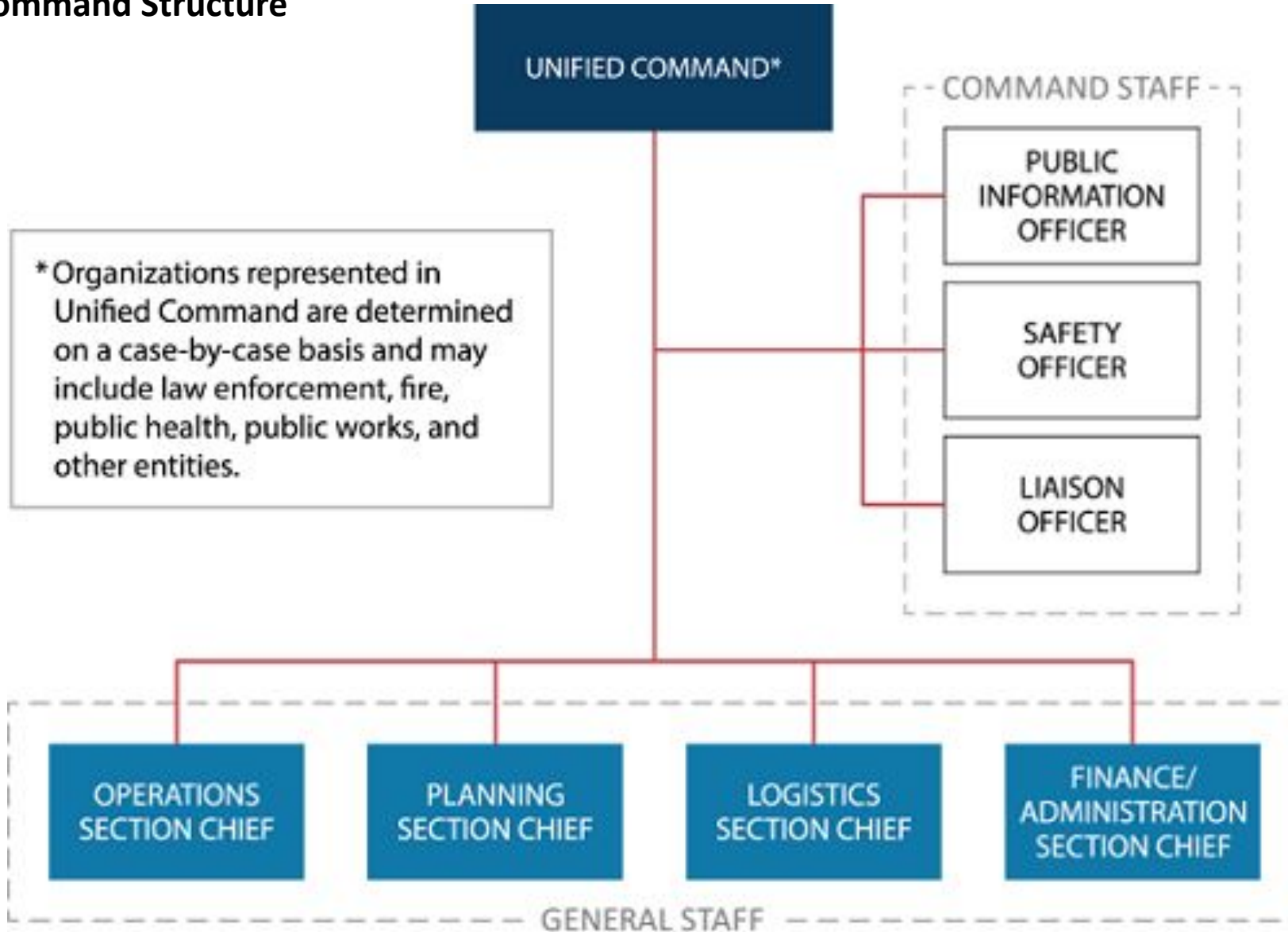




# Incident Command Structure

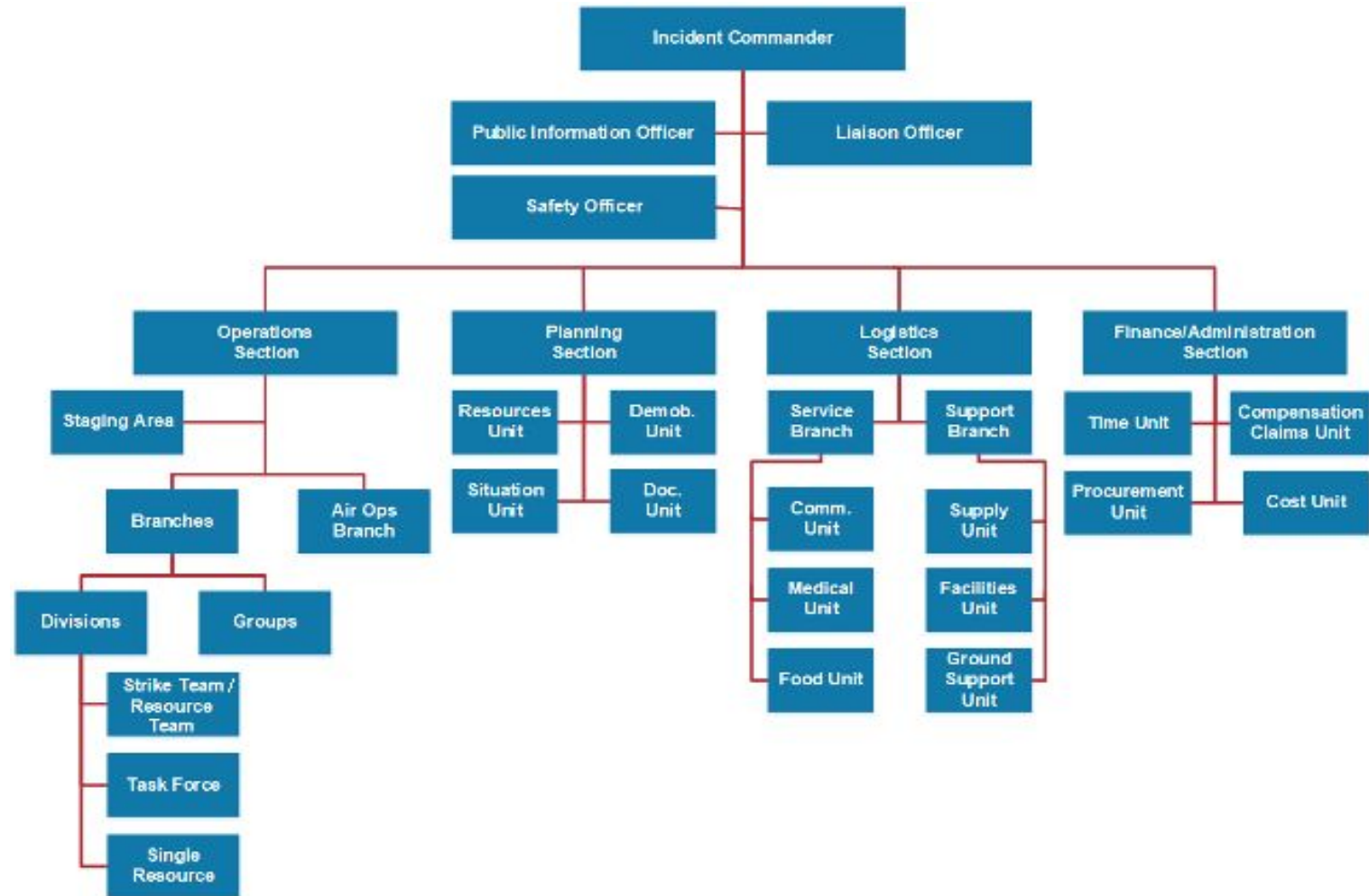


# Unified Command Structure





# Incident Expands – ICS Structure Expands







***INCIDENT  
COMMAND POST  
(ICP)***



***EMERGENCY  
OPERATIONS  
CENTER (EOC)***

Focuses on tactical level of a specific incident.

Focuses on strategic level of an incident (no operational focus).

Located near an incident.

Not located near an incident (can be remote).

Responsible for operational activities.

Provides resources, coordination and analysis.



# ROLE EXPECTATIONS

---





# Senior Officials Role in the ICS

---

- **Delegates authority to designated Incident Commander – IMAT**
  - Does not relieve the granting authority responsibility of the incident.
- **Provides policy guidance on priorities and objectives based on situational needs and the Emergency Operations Plan.**
- **Activates legal authority that may be required.**
  - Disaster Declaration
  - Evacuation
  - State of Emergency
  - Other protective actions
  - Oversees resource coordination and support



# G 0402 NIMS Overview for Senior Officials (Executives, Elected, & Appointed)



**FEMA**





# What happens when...

---



A president or  
celebrity wants to visit



People don't evacuate  
(pets)



We don't have social  
media



Donations  
management



Controlling scammers



Employee  
considerations



# PUBLIC INFORMATION

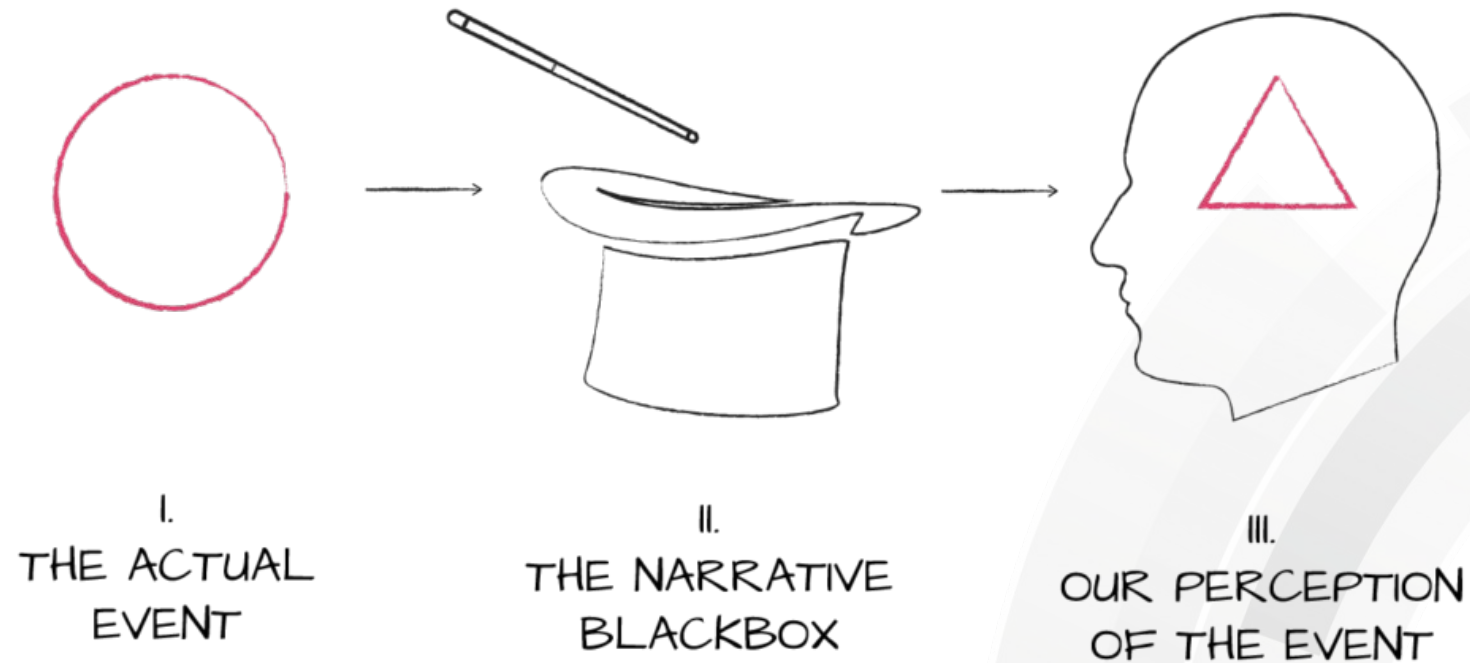
---



# Public Information –Best Practices

---

## CONTROLLING THE NARRATIVE







# Location Location Location

- Well known location
- Avoid large rooms
- Podium or table for all required spokespeople
- Control the noise level
- Consider a sign in sheet
- Outside location considerations
- Follow up briefs/timing



# Press Conference Best Practices

- **Prepare the speaker**
- **Utilize a trained Public Information Officer to assist in preparation**
  - Clear, concise points
- **Meet with all speakers prior to the press conference**
- **Decide if questions will be allowed and how to address them**
- **Timing – Consider reporters deadlines and news times**
- **Be ready to start on time**
- **Provide press releases with embargo to prevent early publication**
- **Have journalist or news outlet contact information for updates**



# Public Information –Best Practices

---

**Gary Southern** – Freedom Industries  
West Virginia 2016

Press Conference - Freedom Industries





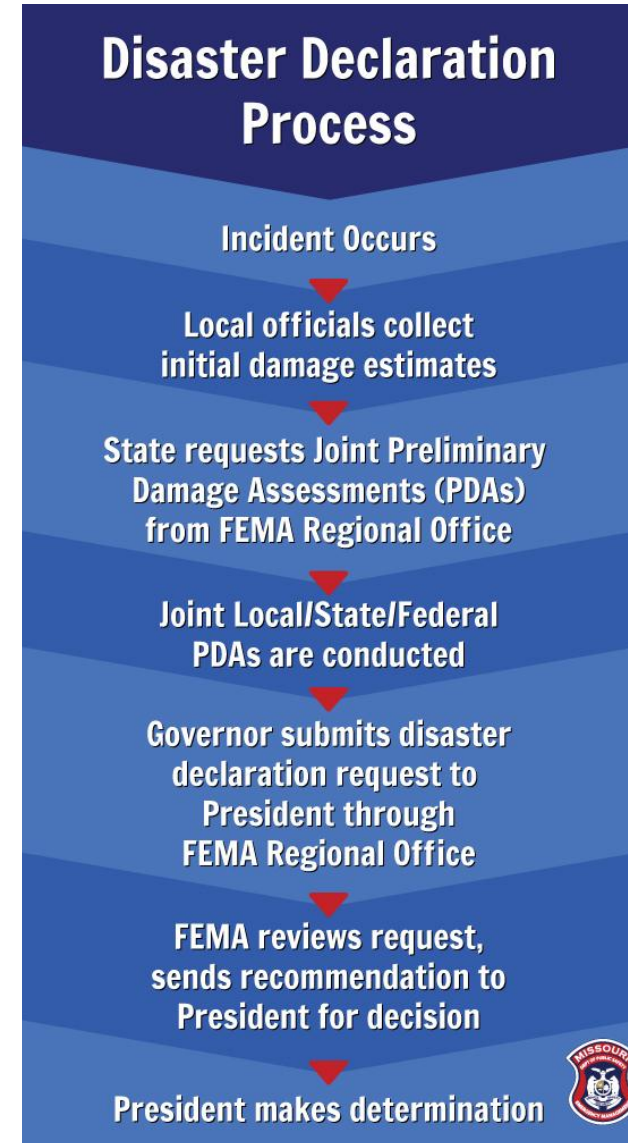
# FINANCE / ADMINISTRATION

---



# Who is paying for this?

The Governor declares a State of Emergency when he/she believes a disaster has occurred or may be imminent that is severe enough to require State aid to supplement local resources in preventing or alleviating damages, loss, hardship or suffering.



# Finance/Administration

---

- **Manages all financial aspects of the incident**
- **Provides financial and cost analysis information as requested**
- **Create accounts for claims and costs; coordinates with Logistics**
- **Tracks worker time and costs for materials and supplies**
- **Documents claims for damage, liability and injuries**
- **Notifies insurance to initiate claims reporting**
- **Provides incurred and forecasted costs at planning meetings**
- **Provides oversight of financial expenditures, new leases, **contracts** and assistance agreements to comply with corporate governance**





# Other costs:

---



Fuel



Supplies



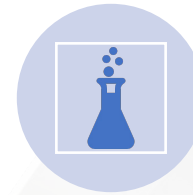
Rentals



Water usage –  
Contractors for  
cleanup



PPE – Personal  
Protective  
Equipment



Hazmat supplies



Hotel costs



Food/catering



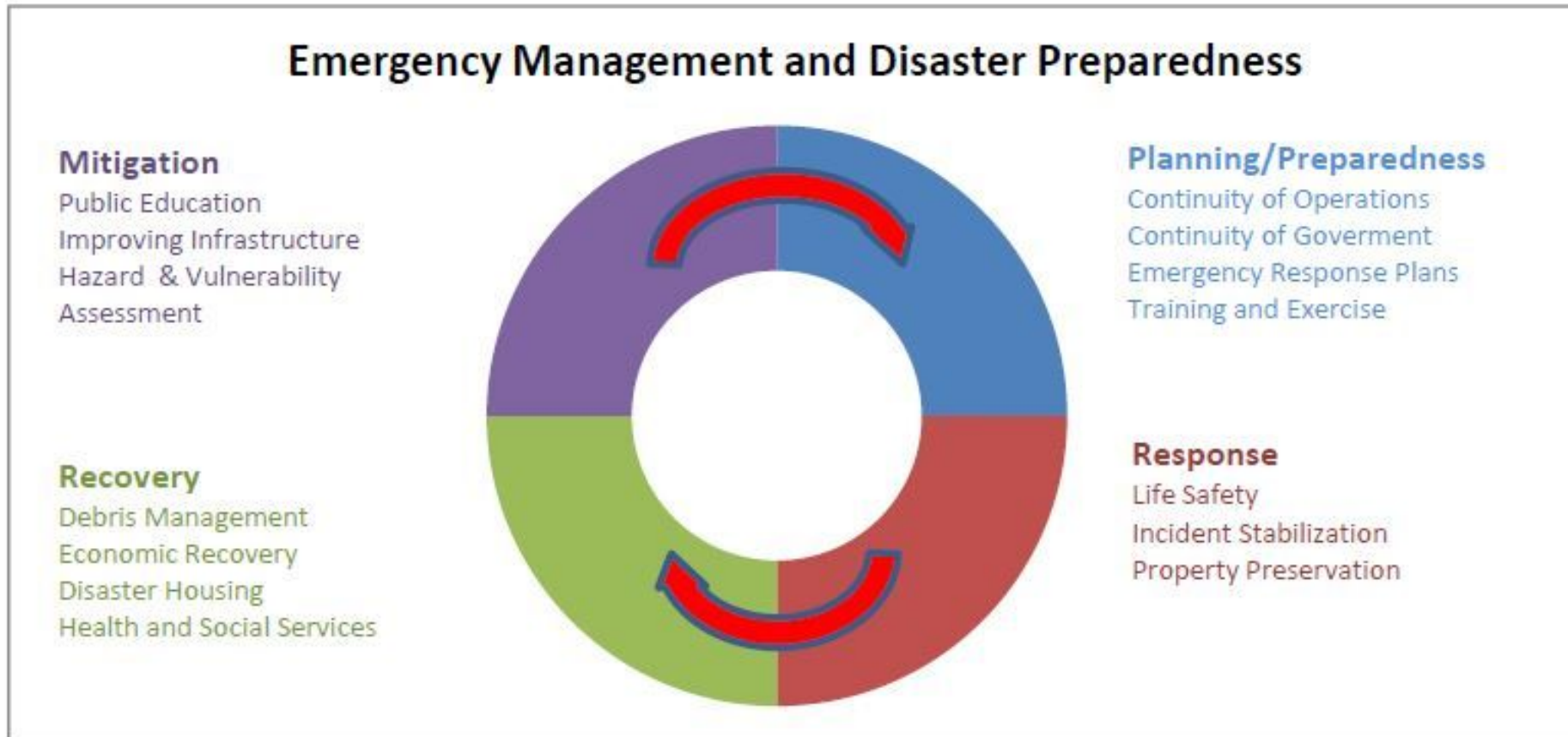


# Preparedness Emergency Operations Plans





# How do we prepare? Emergency Management





# Community Lifelines – Prioritize efforts



# Emergency Operations Plan Components

Although the Basic Plan provides the general approach to emergency response, it does not stand by itself. Rather, it forms the basis for the remainder of the Plan, which also includes:

- [Functional Annexes](#) that address the performance of a particular broad task or function, such as mass care, communications, evacuation, shelter-in-place, damage assessment, recovery, etc.
- [Hazard-Specific Annexes](#) that provide information specific to a particular hazard.

In addition, each part of the EOP may have addenda in the form of Standard Operating Procedures (SOPs), maps, charts, tables, forms, checklists, etc. These addenda may be included as attachments or incorporated by reference.

Which annexes are included depends on the campus's hazard analysis. For example an IHE:

- In California would probably include an earthquake annex in its EOP.
- In Florida would probably include hurricane annexes.
- In the Midwest would undoubtedly include annexes that address tornadoes.

The decision about whether to develop an annex rests with the planning team.



# Organization of an EOP – FEMA ESFs

---


## Emergency Support Functions:

- ESF1 Transportation
- ESF2 Communications
- ESF3 Public Works and Engineering
- ESF4 Firefighting
- ESF5 Emergency Management
- ESF6 Mass Care, Housing, and Human Services
- ESF7 Resources Support
- ESF8 Public Health and Medical Services
- ESF10 Oil and Hazardous Materials Response
- ESF11 Agriculture and Natural Resources
- ESF12 Energy
- ESF13 Public Safety and Security
- ESF14 Long-term Community Recovery and Mitigation
- ESF15 External Affairs






# Where to get help:



## Developing and Maintaining Emergency Operations Plans

Comprehensive Preparedness Guide (CPG) 101  
September 2021, Version 3.0




Enter Search Term(s):

**EMI Courses & Schedule**

Take a Course On Campus

**EMI Students & Instructors**

Information for Students and Instructors

**Apply**

Learn how to apply to our programs

**Programs & Activities**

Resident/Non-Resident, Trainer Program, etc.

**Independent Study**

Online courses available free of charge

**Contact Us**

Contact IS, NIMS, Admissions

[Home](#) > [Independent Study Program \(IS\)](#) > [Search Results Course List](#)

Follow FEMA:      



[IS Home](#)

[IS Course List](#)

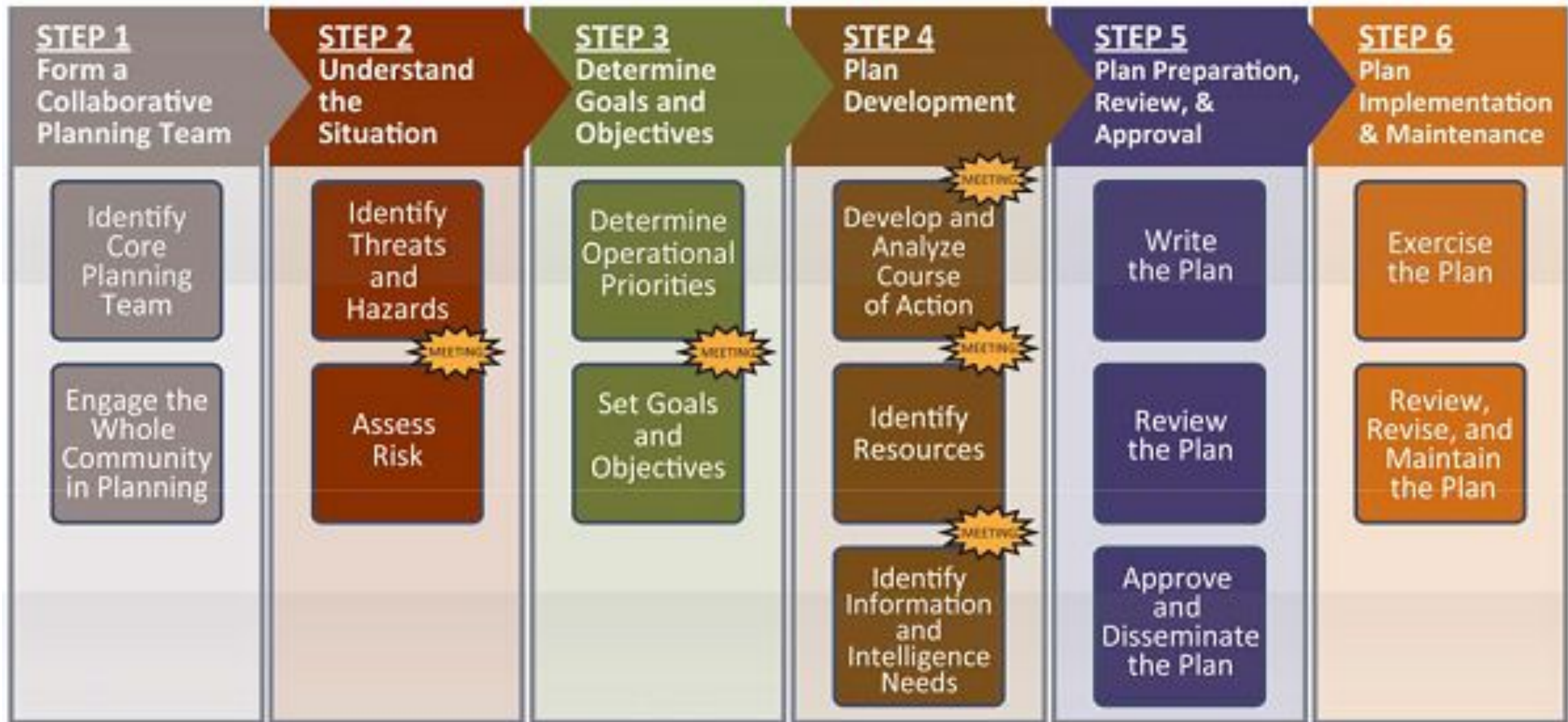
[Lista de cursos de español](#)

## ISP Courses - Search Results

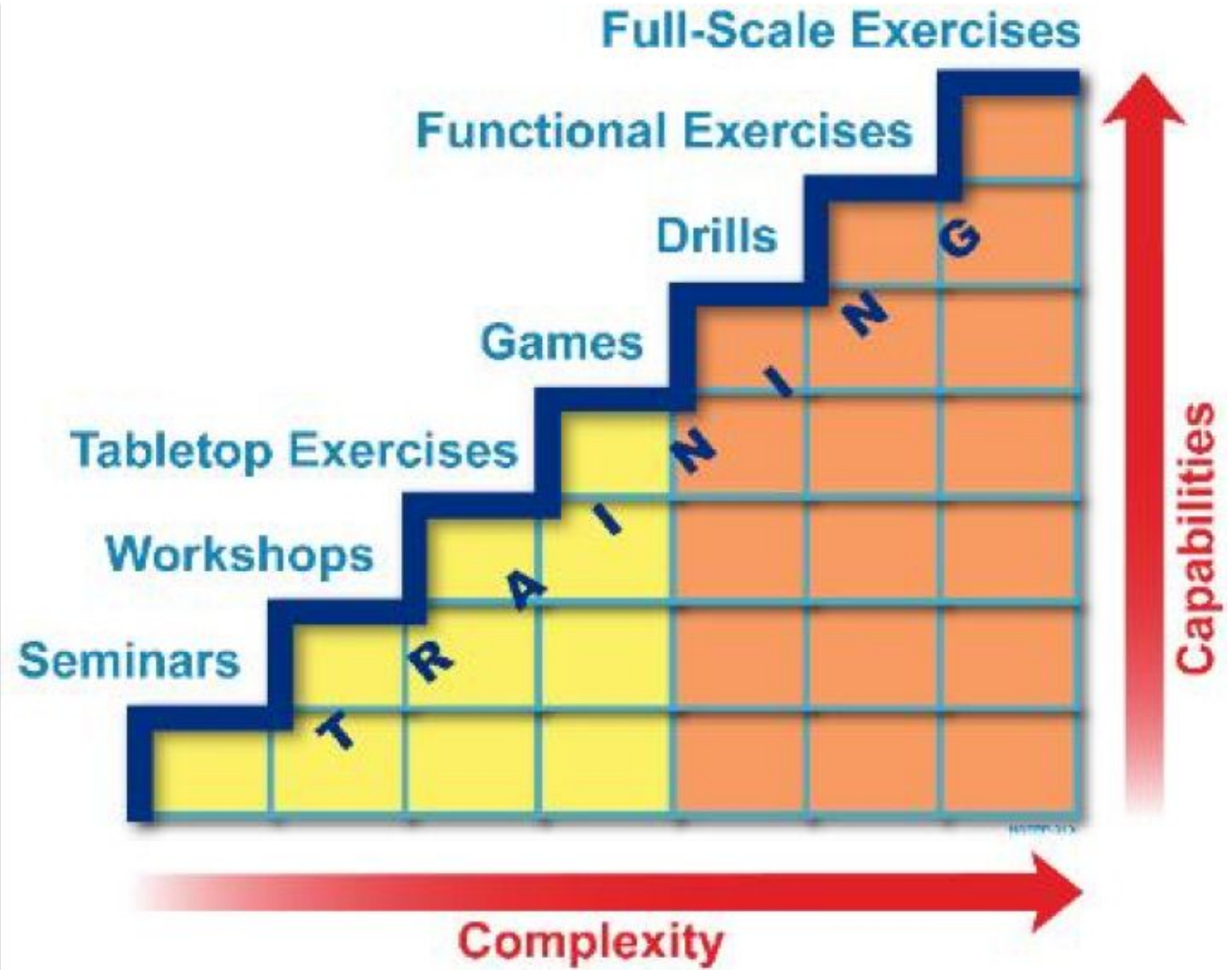
Enter Keyword(s) or Course Code

Course Code	Course Title
IS-235.c	<a href="#">Emergency Planning</a>
IS-362.a	<a href="#">Multi-Hazard Emergency Planning for Schools</a>
IS-554	<a href="#">Emergency Planning for Public Works</a>
IS-662	<a href="#">Improving Preparedness and Resilience through Public-Private Partnerships</a>





Train  
Update  
Share





# Resources

---

**FEMA Online Training Courses:** <https://training.fema.gov/>

**Ohio EMA EOP Information:**

<https://ema.ohio.gov/prepare-respond/state-plans/01-ohio-emergency-operations-plan>

**Guide for All Hazards Emergency Operations Planning:**

<https://www.fema.gov/pdf/plan/slg101.pdf>

**Developing and Maintaining EOPs**

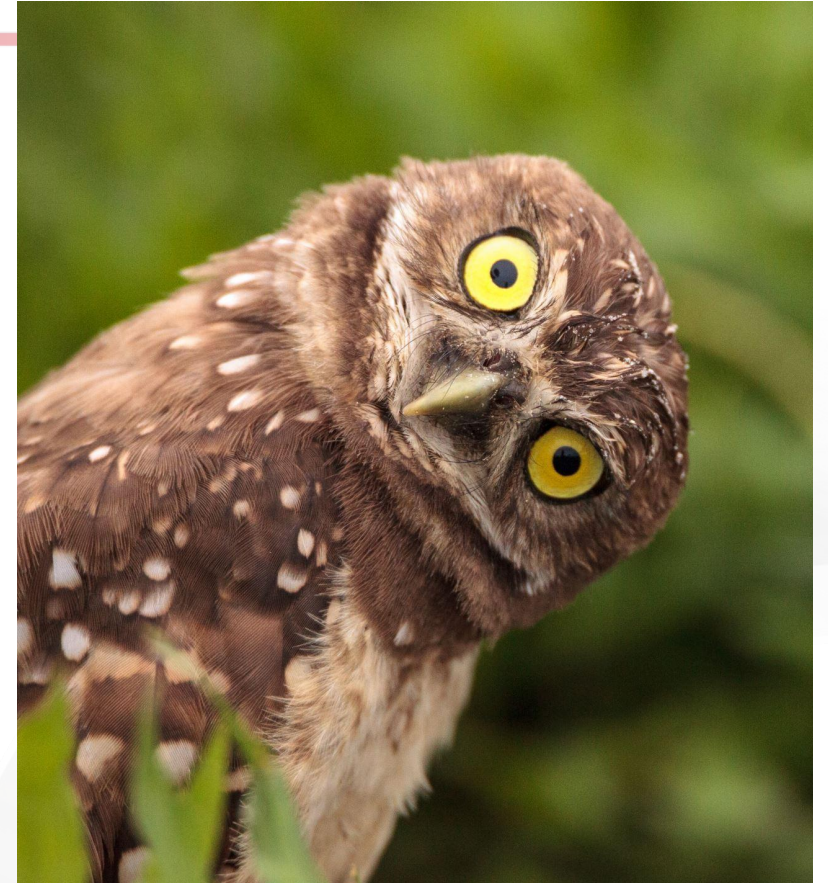
[https://www.fema.gov/sites/default/files/2020-05/CPG\\_101\\_V2\\_30NOV2010\\_FINAL\\_508.pdf](https://www.fema.gov/sites/default/files/2020-05/CPG_101_V2_30NOV2010_FINAL_508.pdf)

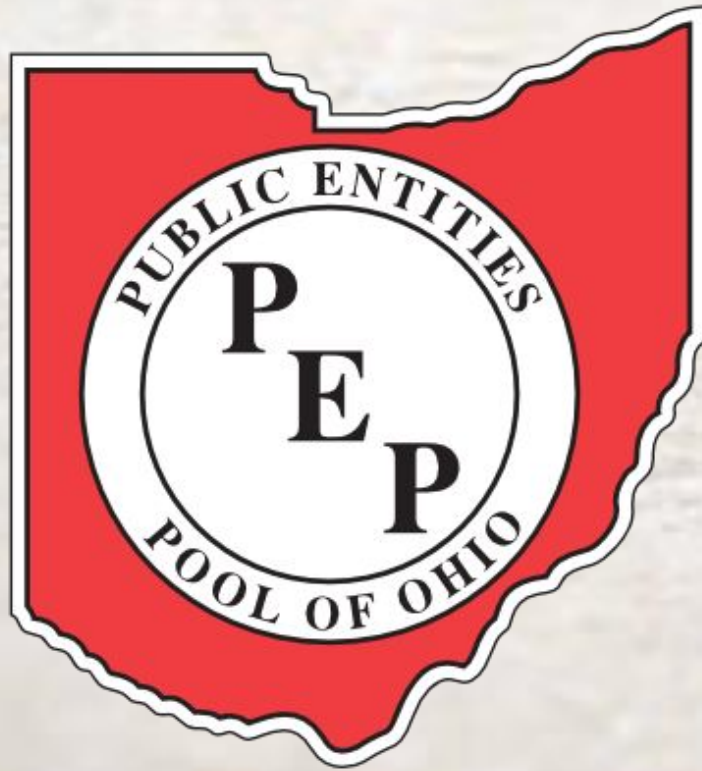
**Example EOP:**

[https://northcharleston.org/wp-content/uploads/disaster\\_emergenc\\_ops\\_plan.pdf](https://northcharleston.org/wp-content/uploads/disaster_emergenc_ops_plan.pdf)



# Questions?





**Diana Woolf OFE**  
**Senior Risk Services Consultant**  
**Public Entities Pool of Ohio**  
[Diana.woolf@persopool.com](mailto:Diana.woolf@persopool.com)  
**330.541.1707**

Thank You