



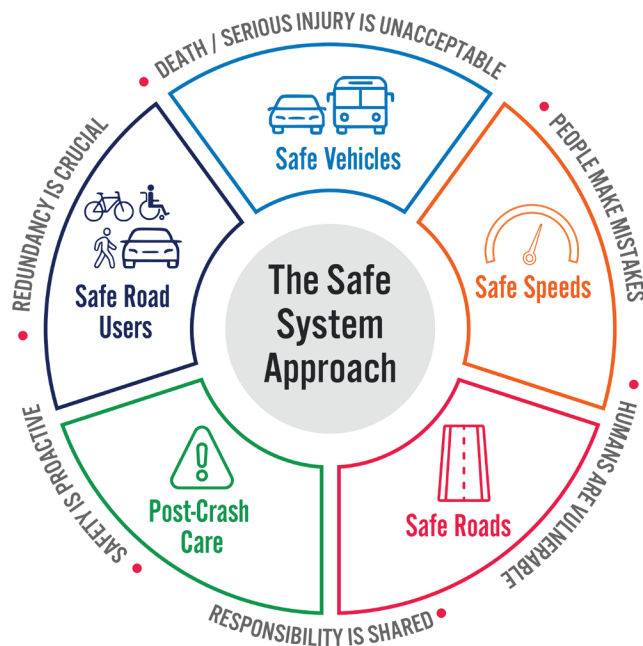
GEARY COUNTY

TRANSPORTATION SAFETY ACTION PLAN

Geary County is aiming to end traffic deaths and serious injuries on our roads with a Transportation Safety Action Plan.



Geary County's Transportation Safety Action Plan (TSAP) is a plan that the county will use to create safer roads based on the Safe System Approach, a holistic approach to proactively prevent fatal and serious injury crashes. Using recent crash data and input from stakeholders and the community, this plan will identify the roads and intersections in greatest need of safety improvements.



TIMELINE



Early Winter 2026

Vision and Needs

Online engagement and community input, stakeholder meetings, crash data analysis



Early Spring 2026

Analysis and Recommendations

Policy review, actions and strategies, safety projects and priorities



Late Spring 2026

Documentation and Adoption

Draft and final plan, plan adoption, movement towards implementation

Frequently Asked Questions



What is a Transportation Safety Action Plan?

A Transportation Safety Action Plan (TSAP) is a comprehensive effort to make all roads safer for all users. This plan uses data and public input to create a road map for decision-makers about transportation planning, infrastructure, education and policies.

What is the Safe System Approach?

The Safe System Approach is a holistic road safety strategy aiming for zero deaths and serious injuries. This is accomplished by designing a safer transportation system that builds and reinforces multiple layers of protection to both prevent crashes from happening in the first place and minimize harm when crashes do occur. Objectives of the Safe System Approach include safer people, safer roads, safer vehicles, safer speeds and post-crash care.

What will the plan be used for?

The TSAP will be used to identify strategies, policies, countermeasures, and processes that will make our roads safer for all users. The plan will identify road reconstruction projects and potential transportation system-wide safety programs. The TSAP is focused on the roads within Geary County, however, it does not include the City of Junction City.

Who is this plan for?

The TSAP is for all road users, including people driving and riding in vehicles, people walking, people biking, and any other person using the street.

How is it funded?

Funding for the TSAP was made available by the federal Safe Streets and Roads for All (SS4A) grant, a competitive program that funds regional and local efforts to reduce roadway fatalities and serious injuries.

How can I get involved?

We want to hear from you! Stop by our office or visit the project website to learn more, take polls, and to share your comments. Help us identify the areas where you feel unsafe driving, walking, and biking.

CONTACT US!

Phone: 785-238-3612

County Website: www.gearycounty.gov

In Writing: 310 E 8th St. Junction City, KS 66441

Email: publicworks@gearycounty.gov

Project Website: gearycountytasap.com

