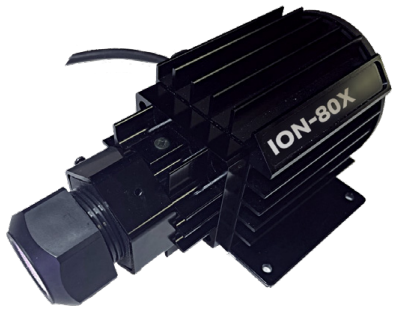


PROJECT	DATE
TYPE	QTY



ION-80X

IP67 OUTDOOR FIBER OPTIC LED ILLUMINATOR

DESCRIPTION:

The ION-80X series LED Fiber Optic Light Source is a multi-controllable and configurable fiber optic illuminator for the architectural and commercial lighting, sign and pool & spa markets. It can be configured with white light or RGBW LEDs with a *stand-alone program, DMX, RS232 Serial or RF. LED options include RGBW, Cool White and Warm White. Discreet colors upon special order, contact the factory for availability. The ION-80X features no serviceable or moving parts.

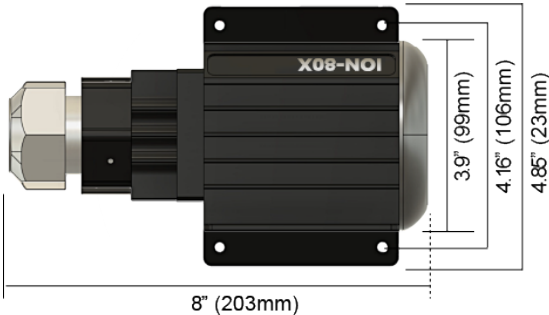
The fanless SynJet® Cooler provides for quiet and efficient heat sink cooling with a frictionless oscillating diaphragm.

A 100W/24VDC power supply rated for 100-240VAC and 277VAC for North America only, is included for RGBW.

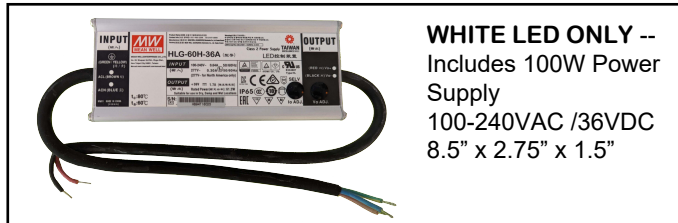
A 100W/36VDC Power Supply rated for 100-240VAC and 277 VAC for North America only, is included for WHITE.

*Stand-alone program / SB - Smart Board option:

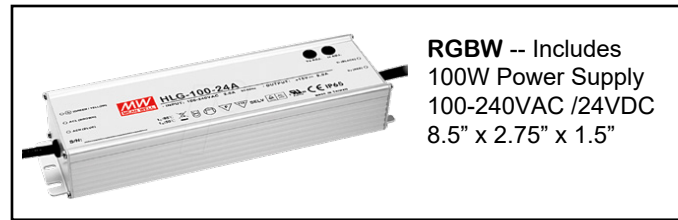
Advance through the color programs by toggling the ON/OFF switch. Blue/White/Cyan/Green/ Magenta/Red/Gold/Smooth Color Cycle Through All Colors.



*Standard 6 ft. Cable to Power Supply.
(Longer lengths available. Contact Factory)



WHITE LED ONLY --
Includes 100W Power Supply
100-240VAC /36VDC
8.5" x 2.75" x 1.5"



RGBW -- Includes
100W Power Supply
100-240VAC /24VDC
8.5" x 2.75" x 1.5"

SPECIFICATIONS

PARAMETER	RGBW	WHITE
Input Voltage	100-240VAC /277VAC	100-240VAC /277VAC
Amps	4 Amps	1 Amp
Wattage	100 W Max	40 W Max
Power Supply	24 VDC Class 2	36 VDC Class 2
Hz	50/60	50/60
Fiber Capacity	1000	1000
Operating Temp.	-10*c to 80* C	-10*c to 80* C
Weight	7 lbs.	7 lbs.
Outdoor Rating	IP67	IP67
Housing	Aluminum	Aluminum
Dimensions	W: 4.85"(23mm) H: 3.9"(99mm) L: 8"(203mm)	

PHOTOMETRICS

LED	Lumens @ 700ma
WW	4248 lm
CW	6453 lm
RGBW	3465 lm (R=765 G=920 B=230 W=1550)



ION-80X : LED Fiber Optic Illuminator

MODEL #	DESCRIPTION
<input type="checkbox"/> ION- 80X - WW	Warm White 3000K 98CRI
<input type="checkbox"/> ION- 80X - CW	Cool White 5500K 98CRI
<input type="checkbox"/> ION- 80X - RGBW-SB	RGB+W LED Smart Board 2 Wire w/ toggle ON/OFF Color Control (Built-in Programs)
<input type="checkbox"/> ION- 80X - RGBW-5W	5 Wire for RGB+W (For RF, DMX or RS232 controllers)

ACCESSORIES

- RF** - RF Controller + Handheld Remote
- DMX4** - 4 Channel DMX512 Decoder for RGBW
- DE3** - STICK-DE3 DMX Wall Controller
- RS232** - Advanced RS232 Serial Controller
- EPICWIFI** - WiFi for Advanced RS232 Serial Cont.
- DMX-WIFI** - Wall Controller w/ WIFI & Phone APP

IMPACT LIGHTING INC.

