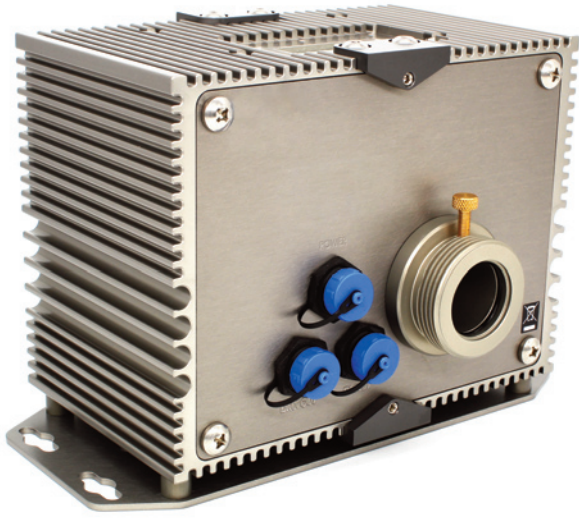


PRODUCT SPECIFICATION SHEET

Nova Aqua IP67 RGBW LED Light Source



Rev. C5



Extremely high powered light output and full DMX control make the Nova an LED light source capable of competing with all traditional light source types.

Offering either full manual control or industry standard DMX to control the unit's colour change effects, plus the option of adding a twinkle wheel and an RF remote control, this is the ultimate light source for powering decorative fibre optic effect lighting.

A typical LED life of 50,000 hours and cool quiet running ensure that maintenance costs are reduced to almost nil.

Fitted with a standard 30mm fibre port connector, this light source is suitable for both new installations and retro-fitting to existing fibre optic installations.

Please note that although this light source is fully IP67 rated and can be used in wet/outdoor areas, it is not suitable for submersion in water and it should not be buried underground.

CLEARANCE / VENTILATION

It is imperative that a gap of 200mm (8") is left around the unit. This is to allow air to circulate and prevent overheating. The location must have free ventilation and must not have an ambient temperature higher than that specified for the unit.

GENERAL INFORMATION

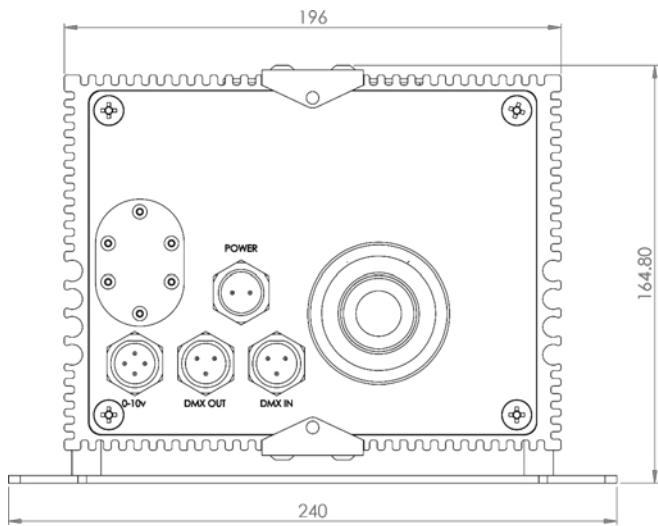
Port connector size	30mm diameter
Fibre type	Glass / PMMA
Material/Finish	Hard anodised aluminium
Dimensions (L x W x H)	222mm (8.7") x 240mm (9.4") x 163mm (6.4")
Weight	4.44kg
Operating Environment	External use - IP67
Min Ambient Temp.	-10°C
Max Ambient Temp.	+45°C

LIGHTING AND CONTROL INFORMATION

Control Functionality	DMX & manual dimming
DMX Functionality	User addressable to 512
DMX Channels	6 channels
Colour Change Functionality	DMX, manual & remote control
Effects Wheels Options & Functionality	Twinkle wheel controlled by DMX and manual

LED ARRAY DATA

LED Array Type	Custom RGBW array
LED Array Power	46W
LED Array Model	Luxeon 36 LED Array
LED Array Life (L70, B10)	50,000 hours typical @ 25°C
White Light Color Temperature Options	6500K (standard), 4000K, 3000K



ELECTRICAL CHARACTERISTICS

Supply Voltage	90-305Vac
Mains Running Current	0.2A @ 240Vac
Mains Voltage VA rating	50VA
External PSU Type	Meanwell, 24VDC, IP67, Type HL Driver
Motor Type	Rotalink 25C13/YSOLPSL3E 12V 60:1
Fan Type	ebm-papst, 80mm, IP68, 32dBA

RF REMOTE CHARACTERISTICS

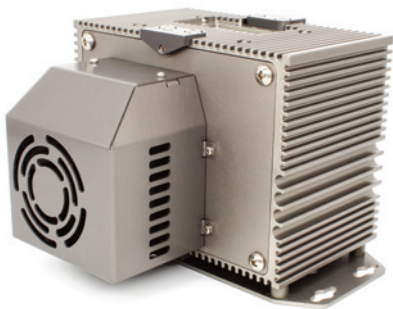
RF Remote Frequency	2.4GHz
RF Remote Range	30m, depending on environment
RF Remote Power	2 x AAA batteries (supplied)

SEA WATER / SALINE ENVIRONMENTS

Please be aware that UFO will not specify, supply or install this illuminator for use in any area where corrosion or damage from saline may occur. This includes near the sea, on ships or in any other areas where the illuminator would be in an unprotected area.

Damage caused by salt water due to improper, unprotected siting of the illuminator will void any and all UFO warranties on the product. UFO strongly recommend that the illuminator is not installed in any location where such damage may occur.

LIGHT SOURCE PRODUCT CODES



MODEL	COLOR TEMPERATURE		TWINKLE EFFECT		REMOTE CONTROL		SENSOR	
UFO NOVA IP	6500K	65 DMX	Twinkle Wheel	T	Remote Control	R	Sensor	S
	4000K	40 DMX	Not Required	X	Not Required	X	No Sensor	X
	3000K	30 DMX						
UFO NOVA IP	-	-	-	-	-	-	-	-

e.g. UFO NOVA IP-65 DMX-T-R-S

For the configuration of a twinkle wheel with sensor, the wheel is supplied with a cut out segment. The wheel in motion will give an uninterrupted twinkle by rotating backwards and forwards either side of the segment. When stop is selected the wheel will come to rest at the segment giving unobstructed white light output.

