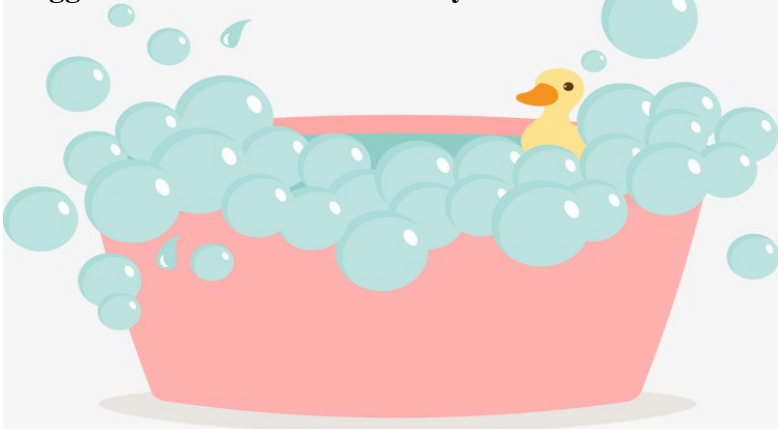
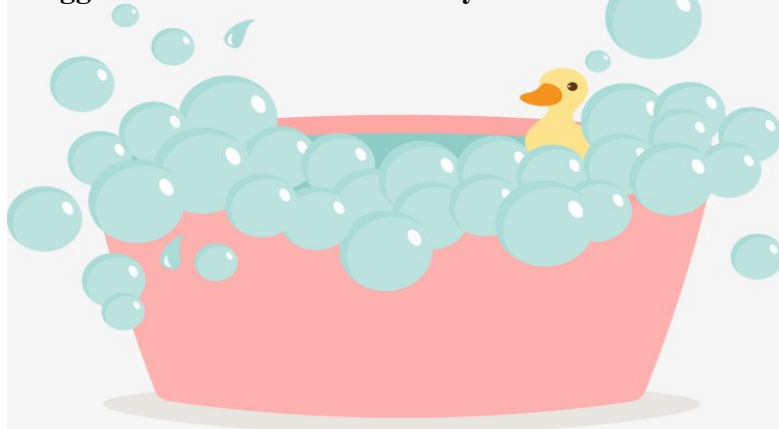


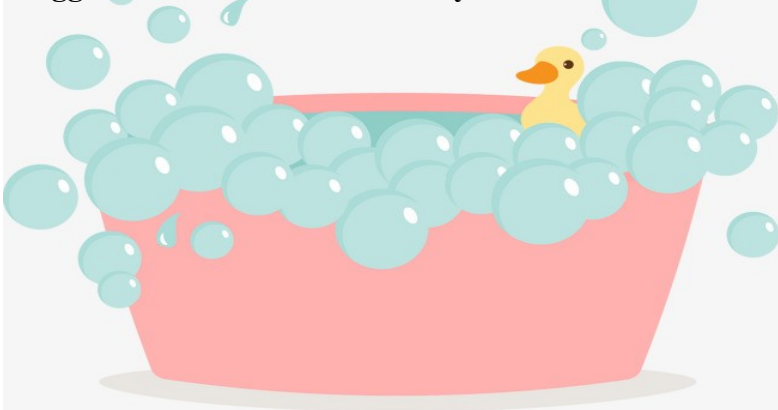
**Show your brushes some love! - especially the foundation brush. Wet brush & dip into MK Cleanser or Dawn dish detergent, then rub vigorously around the spikes on this saver. It will quickly deep clean the brush! Rinse remaining suds and lay brush to air dry. Suggestion: Clean on Wednesdays & Weekends**



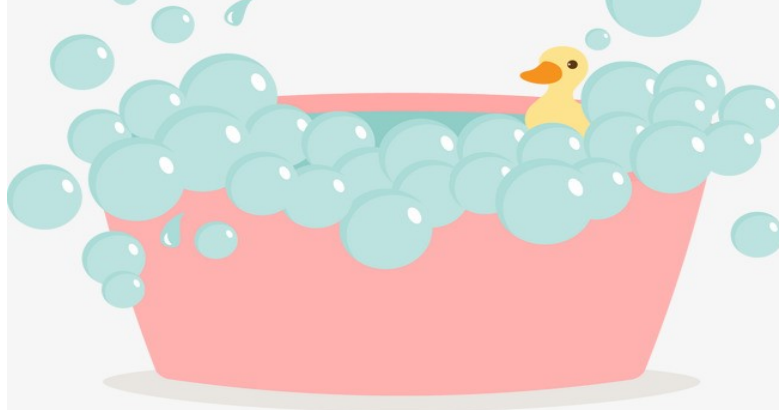
**Show your brushes some love! - especially the foundation brush. Wet brush & dip into MK Cleanser or Dawn dish detergent, then rub vigorously around the spikes on this saver. It will quickly deep clean the brush! Rinse remaining suds and lay brush to air dry. Suggestion: Clean on Wednesdays & Weekends**



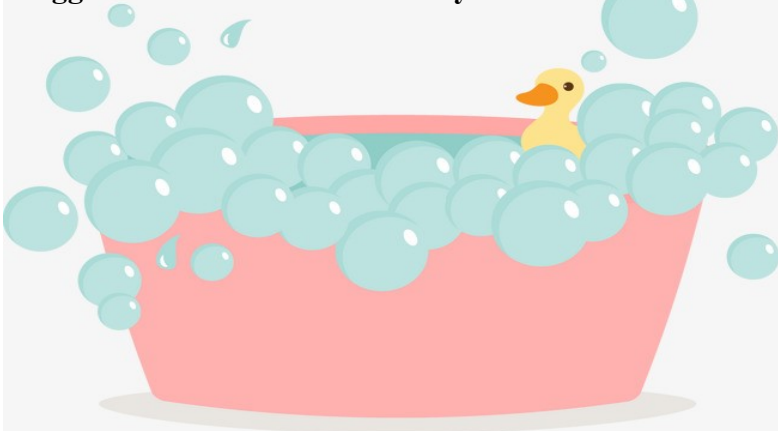
**Show your brushes some love! - especially the foundation brush. Wet brush & dip into MK Cleanser or Dawn dish detergent, then rub vigorously around the spikes on this saver. It will quickly deep clean the brush! Rinse remaining suds and lay brush to air dry. Suggestion: Clean on Wednesdays & Weekends**



**Show your brushes some love! - especially the foundation brush. Wet brush & dip into MK Cleanser or Dawn dish detergent, then rub vigorously around the spikes on this saver. It will quickly deep clean the brush! Rinse remaining suds and lay brush to air dry. Suggestion: Clean on Wednesdays & Weekends**



**Show your brushes some love! - especially the foundation brush. Wet brush & dip into MK Cleanser or Dawn dish detergent, then rub vigorously around the spikes on this saver. It will quickly deep clean the brush! Rinse remaining suds and lay brush to air dry. Suggestion: Clean on Wednesdays & Weekends**



**Show your brushes some love! - especially the foundation brush. Wet brush & dip into MK Cleanser or Dawn dish detergent, then rub vigorously around the spikes on this saver. It will quickly deep clean the brush! Rinse remaining suds and lay brush to air dry. Suggestion: Clean on Wednesdays & Weekends**

