

Walgreens

Binghamton, NY

- Constructed a new 20,000 SF prototype retail store with pharmacy
- Included a 7,000 SF mezzanine for storage and office areas, accessible via elevator
- Coordinated with Department of Environmental Conservation to implement precautions as the site was in close proximity to existing drainage control structures
- Environmental remediation was required to abate pollutants remaining from previous use of site

Jack Sherman Toyota

Binghamton, NY

- The service area of this Toyota dealership was remodeled to enhance client experience
- A drive-up canopy was enclosed, creating a vestibule for service drop off
- The façade was refinished and a new concrete floor was installed including floor drains and an oil water separator

Gault Toyota, Site Development

Endwell, NY

- Converted existing 5.5-acre brown field site into new development pad
- Imported 25,000 cubic yards of structural fill to create 50,000 SF building pad and parking lot
- Engineered and installed 600 lineal feet of modular block wall along existing railroad track to accommodate new grading requirements
- Installed steel H-piles and concrete pile cap to support precast storm water vortex settling basin structure to counter unstable soil conditions
- Provided all underground utility infrastructure
- Milled asphalt for reuse to achieve LEED accreditation

Benedict Subaru

Norwich, NY

-
- William H. Lane Incorporated completed multiple projects at this dealership spanning a decade
 - All new exterior façade and storefront including the addition of new windows, doors and metal panels
 - Full renovation of used car showroom
 - Replacement of all wood doors in administrative offices
 - Modifications of life safety, entrances & exits
 - Addition of new steel canopies

Miller Honda

Vestal, NY

- A full renovation to the new car showroom of this Honda dealership
- New storefront was installed and masonry updated
- Interior finishes were updated in accordance with current brand standards

Van Atta Buick

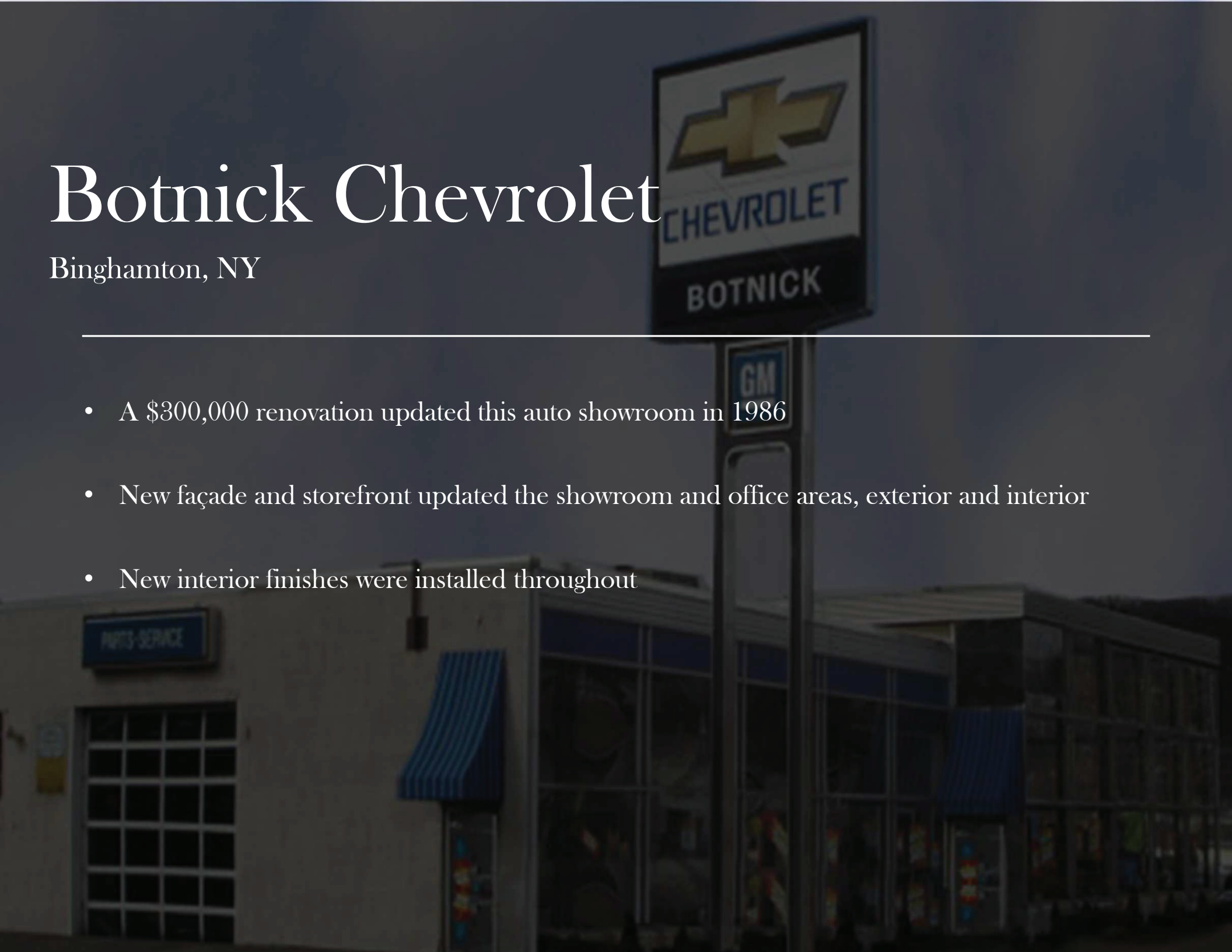
Vestal, NY

- William H. Lane Incorporated constructed the original dealership in 1980 for a cost of \$950,000
- Lane managed all site development, paving, curbing and landscaping
- General construction was self-performed
- A subsequent addition, brought the total square footage to 69,000 SF
- The building houses 5,000 SF of office space, sales areas, a commercial loading dock, and a finished lower level

Botnick Chevrolet

Binghamton, NY

- A \$300,000 renovation updated this auto showroom in 1986
- New façade and storefront updated the showroom and office areas, exterior and interior
- New interior finishes were installed throughout



Travel Center

Rotterdam, NY

- This state-of-the-art travel center is located near the intersection of Interstate 88 and the New York State Thruway
- The 10-acre site includes a 10,000 SF truck service center, gas/diesel fueling stations, parking for approximately 40 trucks and a multi-purpose 6,000 SF facility that includes a major convenience store, a Dunkin' Donuts and a Friendly's Cafe