

# PARTAY GARAGE™ INSTALLATION

Protected by Patent # 7,390,250

Flat Beam rev f

*Stylish Put Aways*

P.O.Box 79178 Houston, Texas 77279

713 628 5554 [info@partaygarage.com](mailto:info@partaygarage.com)

**Your Original PARTAYGARAGE Headquarters!**

- Materials (Standard 16 foot door kit):
- 4... Partay Panels
  - 8... 1/4" ~ 20 by 2" long Hanger Bolts
  - 8... 1/4" Wing Nuts ~ one Jam Nut
  - 2... Wall Mount Hooks
  - 8... Safety Bumpers
  - (Stealth Kit includes Two Allen Wrenches)


Note that these assembly instructions are a suggested guide. A skilled carpenter or handyman may determine shortcuts that will do still do the job.

1. Sweep off your garage floor or driveway. Take the panels out of the boxes and unroll them as shown.

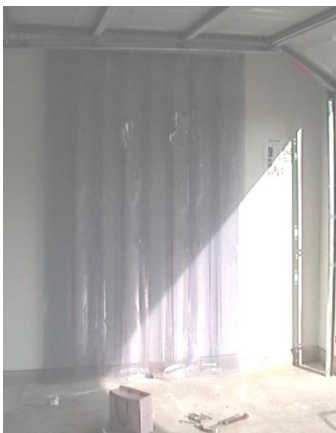
2. Locate a vertical indoor storage place for the panels to hang when the Partay Garage is not in use.

3. With Stud Finder, locate studs and drill two 5/32" holes 88-90" high off the floor. (8 ft. tall panels require 100-102") These may be @ 32" (spanning 2 ~ 16" studs) or 24" centers. If such centers cannot be found then a 2 x 4 header will have to span the existing studs and Wall Mount Hooks will have to mount on the header at either 24" or 32" center. Note that 32" is the preferred storage.

*If a 26" wide 1/2 panel is used, place one hanger bolt in center at 16" spacing or it too will mount on 24" spacing.*

4. Twist  Wall Mount Hooks into studs until base of hook rubs the wall for support.

5. Hang your Partay Panels on the two Wall Mount Hooks allowing them to relax from the rolled condition.



Stealth Two Piece Stud

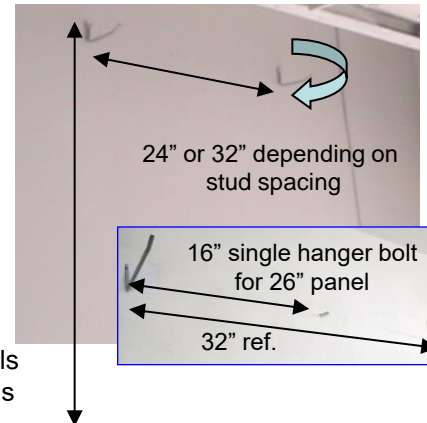


Tools:

- Minimum 20' Tape Measure
- Drill with 5/32" bit (5/16" f/Stealth Bushing)
- Step Ladder
- Pliers ~ Needle Nose
- Stud Finder
- Socket or Crescent Wrench f/1/4" -20 Nut
- Utility Knife
- 2~ 10" long 2 X 4s Boards for trim



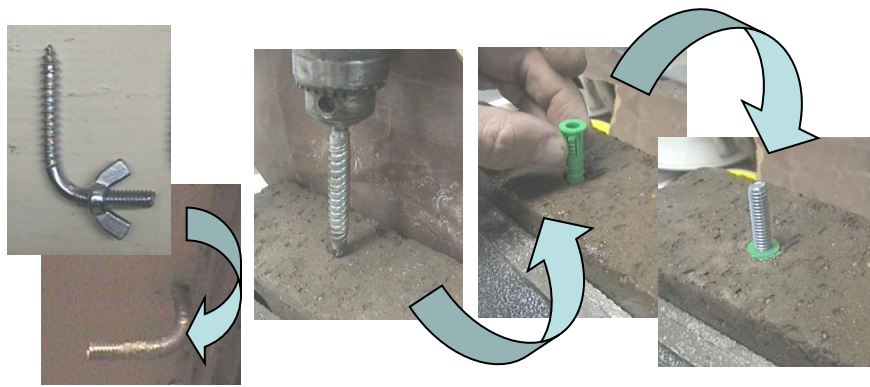
88-90 Inches to drill hole from floor for 7 ft. tall Panels  
100-102" for 8 ft. tall panels



6. Measure a location on the front of your door that has good structural mount integrity. Standard installation kit uses 2 inch long hanger bolts that will protrude out from a wooden header as shown in this example. Make sure that the panels will slightly overlap the sides of your door or fit fairly flush to the side cope. Be sure that the garage door can close in front of your mounting location with the PARTAY panels in place.



6. (cont) Garages are coped in different fashions so one may require 90 degree (special order) hanger bolts mounted from below the door header. Also some garages may be close coped in brick requiring the use of #12-14 ~ 1 1/2" Plastic Screw Anchors via holes drilled in the brick with a 5/16 masonry bit. These items too are special order or available at your hardware store. ~ Examples shown ~



**All the below also applies to the Stealth Kit\*\*  
Two Piece, Flush Option ~ only a 5/16 drill is used for the outer Stealth Bushing**

7. Garages come in standard widths but frame in differently so the net mounting width for your PARTAYGARAGE door may vary. The nominal overlap of the panels then may be slightly more or less than 2".

8. Overlap considerations from the above may be a little confusing. Refer to the PARTAYGARAGE Installation Diagrams which shows various door width installations with guideline dimensions and final positions of door panels. It is suggested that all hole locations be marked first with an erasable marker and confirm respective panel mount locations as shown on the diagrams.



Use Jam Nut to Drive in Hanger Bolts



Finish installation of all panels

9. Drill the 5/32" drill holes one inch deep @ the exact centers of your marks from 8 above. **Drill holes as perpendicular to the header surface as possible.** If you are in a tight position to protruding outboard frame make sure holes are drilled so wing nuts can be attached. Using the jam nut provided, jam it against one of the wing nuts as shown and drive the screw thread portion of the hanger bolts into the drilled holes until only the 1/4 ~ 20 thread is exposed. Hold the wing nut and reverse the jam nut off the hanger bolt and use to install the next hanger bolt.

10. With first two hanger bolts in location, hang your first PARTAY Panel and secure with 2 wing nuts. Proceed to install the balance of the hanger bolts/panels in a similar fashion until your PARTAYGARAGE door is in place.

11. All 7 & 8 foot tall doors are shipped slightly long which should allow for a custom trim to match your pavement, etc. **Be Extremely Careful**, using a utility knife and a 2X4 or equivalent to cut on. Trim PARTAY Panels slats so they have about 1/8" clearance from the floor. Thus, Panels can hang freely and best in parallel to each other, so as to minimize the air passage when hanging.



**\*\*See Standard and Stealth (Hidden) Hardware Comparison Sheet for more details.**



**Caution: When PARTAY is not in use and activities such as playing basketball etc are going on the protruding Hanger Bolt Threads must be protected by the safety bumpers as shown.**