



Hello,

Thanks again for purchasing a Flux Deluxe portable induction heater.

For additional safety, I am encouraging all Flux Deluxe owners to install this electrical insulator between the Flux Deluxe's battery pack and inductors (the two round yellow magnets wrapped with copper wire). This spacer will prevent the battery pack from making accidental electrical contact with the other components, which could result in sparks, smoke, or potentially worse. 😬

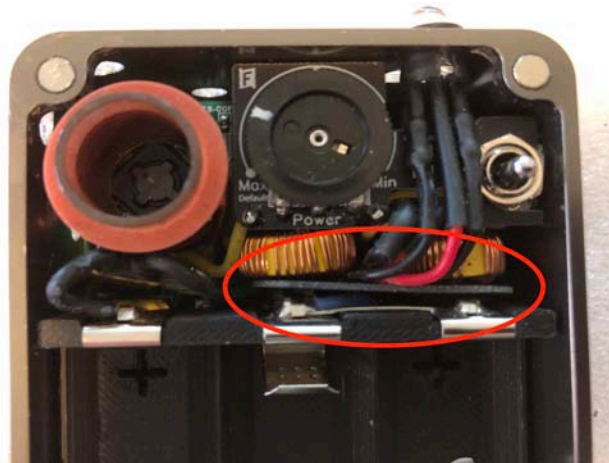
This insulator does two things:

- Safely guides the red and black wires from the battery pack to the PCB.
- Adds a nonconductive barrier between the metal battery clips, wires, and inductors.

The electrical insulator is made from non-conductive epoxy resin:



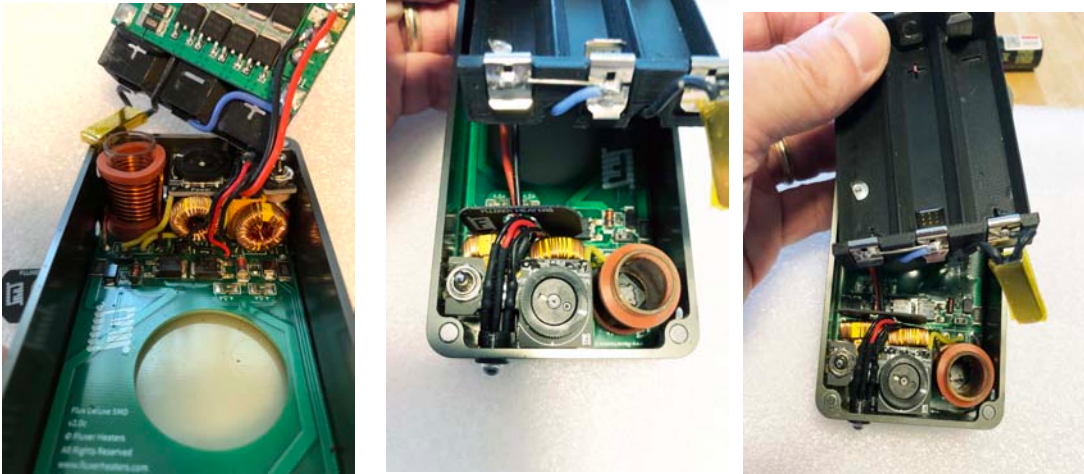
Install it between the battery pack and the inductors:





To install this spacer:

1. Remove the batteries from your Flux Deluxe!
2. Gently remove the battery tray, exposing the wiring underneath (left, below):



3. The spacer fits over the red and black wires, and guides them towards the space between the two yellow magnets (middle, above).
4. The two wires should be flat and run parallel, with the red towards the outside. The wires should emerge from under the battery tray next to the blue wire (right, above).

CAUTION: The silicone insulation on the wires tears easily! Be gentle!

5. Reassemble by reversing the above steps. Take care that no wires are pinched before giving the battery tray its the final push!



Installation complete:

