

**FOREST ENGINEERING
RESEARCH INSTITUTE
OF CANADA**

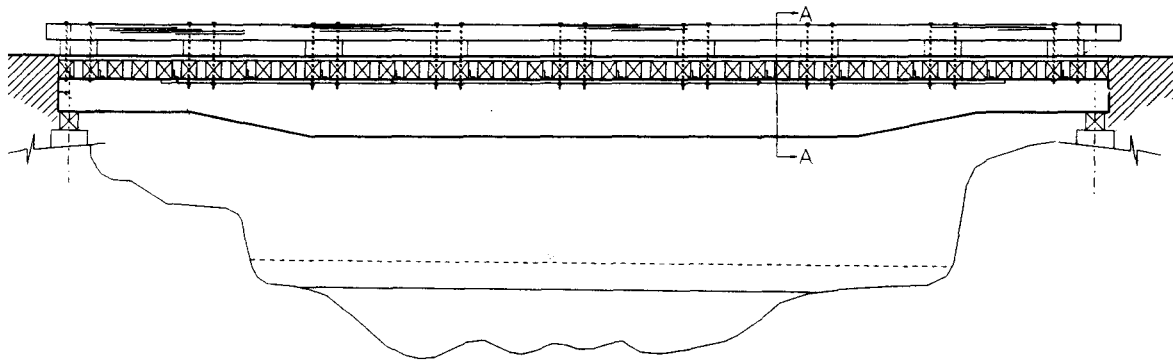


**INSTITUT CANADIEN
DE RECHERCHES
EN GÉNIE FORESTIER**

**STANDARD DESIGN FOR USING
RAILCAR SUBFRAMES AS SUPERSTRUCTURES
FOR TEMPORARY BRIDGES ON FOREST ROADS
IN BRITISH COLUMBIA**

**Allan H. Bradley, R.P.F.
Vera Pronker, P.Eng.**

October 1994



Technical Report

SR-98

**STANDARD DESIGN
FOR USING RAILCAR SUBFRAMES
AS SUPERSTRUCTURES
FOR TEMPORARY BRIDGES ON
FOREST ROADS IN BRITISH COLUMBIA**

**Allan H. Bradley, R.P.F.
Vera Pronker, P.Eng.**

**FOREST ENGINEERING RESEARCH INSTITUTE OF CANADA
Western Division
2601 East Mall
Vancouver, British Columbia
V6T 1Z4
Tel. 604-228-1555 Fax. 604-228-0999**

FERIC Special Report No. SR-98

October 1994

Keywords: Temporary bridges, Railcar bridges, Bridge design.

Abstract

This report describes a standard design for using railcar subframes as superstructures for temporary bridges on forest roads in British Columbia. The design was prepared by the British Columbia Ministry of Forests in response to a need for a standard design acceptable to both government and the British Columbia forest industry. The Forest Engineering Research Institute of Canada (FERIC) facilitated initial discussions and assisted in the development of the standard design. The design assumptions and specifications are detailed. A comparison with alternative superstructures finds the standard design railcar superstructure to be cost competitive.

Acknowledgements

The authors thank the following people, whose assistance and expertise were instrumental to the preparation of this report: Bert Argent, P.Eng., Vancouver Forest Region, British Columbia Ministry of Forests; and Lloyd Daniel, Mechanical Department, BC Rail Ltd.

Authors

Allan Bradley obtained a B.A.Sc. degree in civil engineering and a B.S.F. degree in forest harvesting from the University of British Columbia. He joined FERIC in 1988 and is currently a Researcher in the Transportation and Maintenance Group. His areas of interest are variable tire inflation technology, bridge design, and road construction and maintenance. Allan is a Registered Professional Forester in British Columbia.

Vera Pronker, P.Eng., is a bridge engineer with the British Columbia Ministry of Forests in Victoria. She has extensive consulting experience, and currently works with the rehabilitation and appraisal of existing structures, and the design of new structures.

Disclaimer

The report is published solely to disseminate information to FERIC members. It is not intended as an endorsement or approval by FERIC of any product or service to the exclusion of others that may be suitable.

To Obtain Copies of the Standard Design

A copy of the standard design can be requested from: Engineering Section, Timber Harvesting Branch, British Columbia Ministry of Forests, 1450 Government Street, Victoria, British Columbia, V8W 3E7. Tel. 604-387-5024. Fax. 604-387-6445. Bridge designers should periodically check with the BCMOF Engineering Section in Victoria to ensure that their copies of the standard design are current.

Table of Contents

	Page
Abstract	ii
Acknowledgements	ii
Authors	ii
Disclaimer	ii
To Obtain Copies of the Standard Design Summary	ii v
INTRODUCTION	1
DESIGN METHOD	1
Development of the Standard Design	1
Applying the Standard Design	1
Universal Design Specifications	3
Standard Design Specifications	3
Quality Assurance, Approval, and Inspection Procedures	5
COST ANALYSES	6
CONCLUSIONS	7
RECOMMENDATIONS	7
BIBLIOGRAPHY	7
APPENDIX I Standard Design: Railcar Subframe Superstructure for Forest Road Bridges	9
APPENDIX II Cost Analyses	13

List of Tables

		Page
1	Crosstie Schedule	5

List of Figures

		Page
1	One of the first railcar subframe bridges constructed according to the standard design specifications: built by Wakiwa Construction Ltd. for the BCMOF in 1993	1
2	Schematic and cross section of a typical Railwest bulkhead flat car.	2
3	Detail of crosstie attachment.	5

Summary

Many railcar bridges have been installed on forest roads in British Columbia in the last ten years. However, most of these bridges rely on local expertise and judgement for their reliability, rather than on designs by professional engineers. As a result, a wide variety of designs and configurations are now in service, each with a unique, and in many cases unknown, load-carrying capacity.

The use of railcar subframes as superstructures for temporary forest road bridges has spread, and the British Columbia Ministry of Forests (BCMOF) has become increasingly concerned about associated safety and liability implications, particularly as standards are lacking about employing 'used' steel as structural material. Debate between the forest industry and the BCMOF over the use of railcar subframes demonstrated the need for clearly defined standards for selecting railcar subframes and building railcar bridges.

In March 1991, the Forest Engineering Research Institute of Canada (FERIC) began a project to formulate standard superstructure designs for railcar bridges, and to write and publish a project report containing the final design. The Engineering Section of the BCMOF's Timber Harvesting Branch agreed to create and distribute the superstructure design. It is based on railcar subframes available from BC Rail Ltd. and is just one example of an acceptable design.

Railcar subframes must be selected with care, with particular attention being given to railcar origin and condition. Selected subframes must be approved for use as su-

perstructure components by a professional engineer. The standard design specifies superstructure span, width, clearance, and design life; however, bridge abutments vary with site conditions and must be designed separately. The railcar bridge standard design features two structurally unmodified railcar subframes placed side-by-side. Maximum bridge spans of 16.0 m, 13.5 m, and 7.5 m are specified for L-75, L-100, and L-150 traffic loadings, respectively. A detailed drawing showing site plan and elevation, with high water level, soffit clearance, and a detailed plan of abutments, must be submitted to the BCMOF for approval, prior to construction.

The BCMOF 1993 *Engineering Manual* was the first to identify 'used' steel as an acceptable structural material. With this, and the development of the standard design, forest bridge builders are now able to utilize low-cost used steel components, such as railcar subframes, in bridges. The assumptions and specifications of the standard design meet the applicable Canadian standards and are provided here as design aids.

A comparison of the construction costs of superstructures found that a standard design railcar superstructure may be expected to have an in-place cost that is competitive with most comparable temporary forest bridge superstructures. However, a comparison of the overall costs of railcar superstructures with temporary and permanent superstructures over a 40-year period revealed that the high cost of maintaining and rebuilding standard design railcar superstructures over the long term makes them uneconomically less attractive for use in permanent crossings.

INTRODUCTION

Traditionally, in British Columbia, log-stringer bridges have been the most economical solution for temporary crossings of streams by forest roads. However, bridge loading requirements have increased with larger vehicle weights, while the availability of large-diameter stringer logs has diminished. As a result, a need has developed for alternative superstructure materials for temporary forest bridges.

One alternative gaining acceptance with the forest industry in British Columbia is subframes from used railcars. Used railcar subframes are readily available and inexpensive. Many railcar bridges have been built in the last ten years by forest industry users. However, most of these rely on local expertise and judgement for reliability, rather than on designs by professional engineers. As a result, a wide variety of designs and configurations are now in service, each with a unique, and in many cases unknown, load-carrying capacity.

As the use of railcar subframes in forest road bridges has spread, the British Columbia Ministry of Forests (BCMOF) has become increasingly concerned about associated safety and liability implications, particularly as standards are lacking about employing 'used' steel as structural material. Debate between the forest industry and BCMOF over the use of railcar subframes demonstrated the need for clearly defined standards for selecting railcar subframes, and building railcar bridges. In March 1991, Fletcher Challenge Canada Limited, West Fraser Mills Ltd., Forest Engineering Research Institute of Canada (FERIC), and the Engineering Section of BCMOF's Timber Harvesting Branch agreed that the BCMOF would create and distribute a standard design for using railcar subframes as bridge superstructures, and FERIC would assist in formulating design specifications as required and publish a report.

This report describes one accepted design for using railcar subframes to build superstructures of temporary bridges on forest roads, and compares the cost with alternatives. The design presented here was prepared by the Engineering Section of the BCMOF's Timber Harvesting Branch. It is based on railcar subframes available from BC Rail Ltd. and is just one example of an acceptable design (Figure 1). Other designs will be accepted by the BCMOF, provided they have been certified by a professional engineer registered in British Columbia.

The intent of the report is to promote better understanding about the selection, design, use, and cost of railcar subframes as forest bridge superstructures in British Columbia.

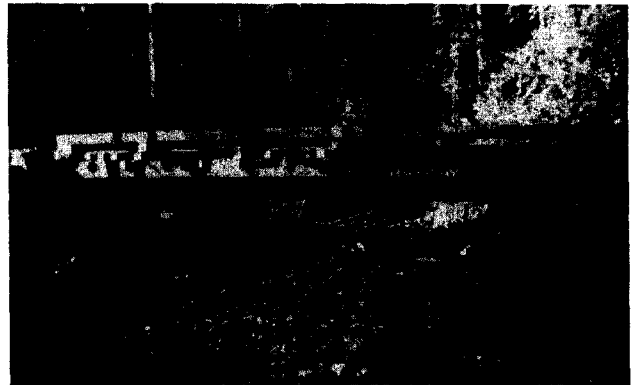


Figure 1. One of the first railcar subframe bridges constructed according to the standard design specifications: built by Wakiwa Construction Ltd. for the BCMOF in 1993.

DESIGN METHOD

Development of the Standard Design

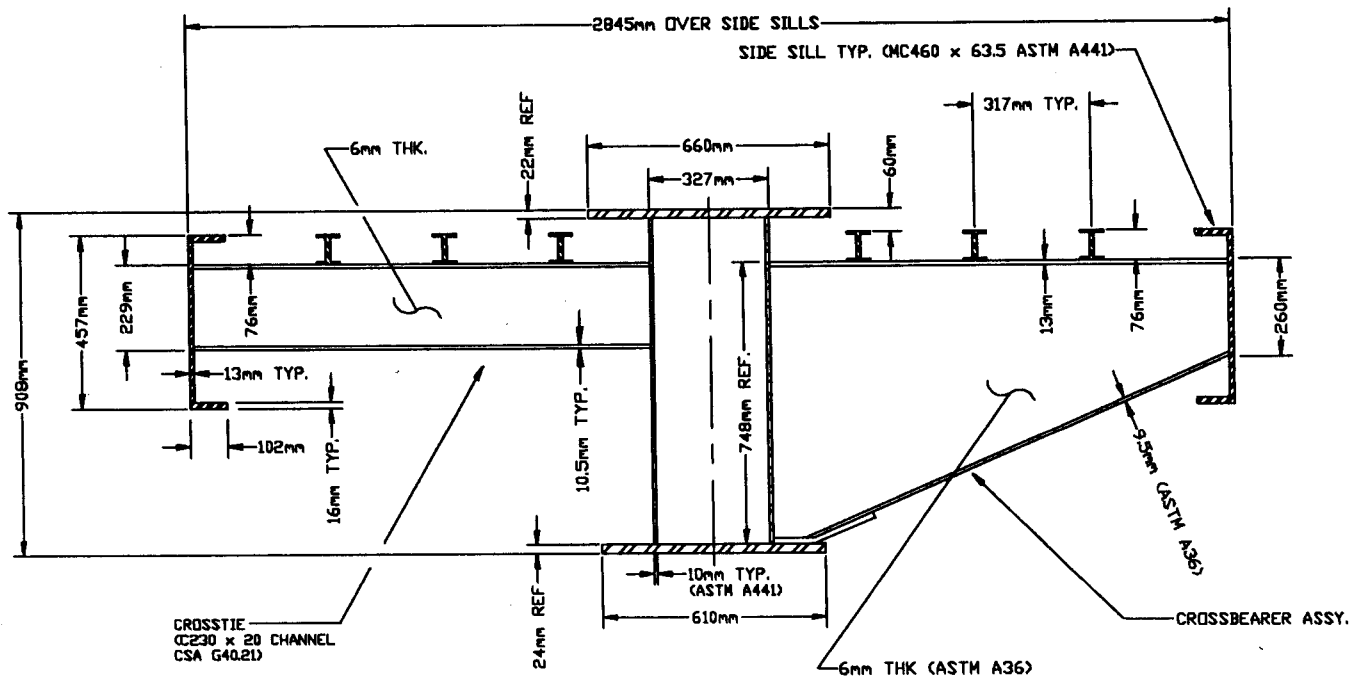
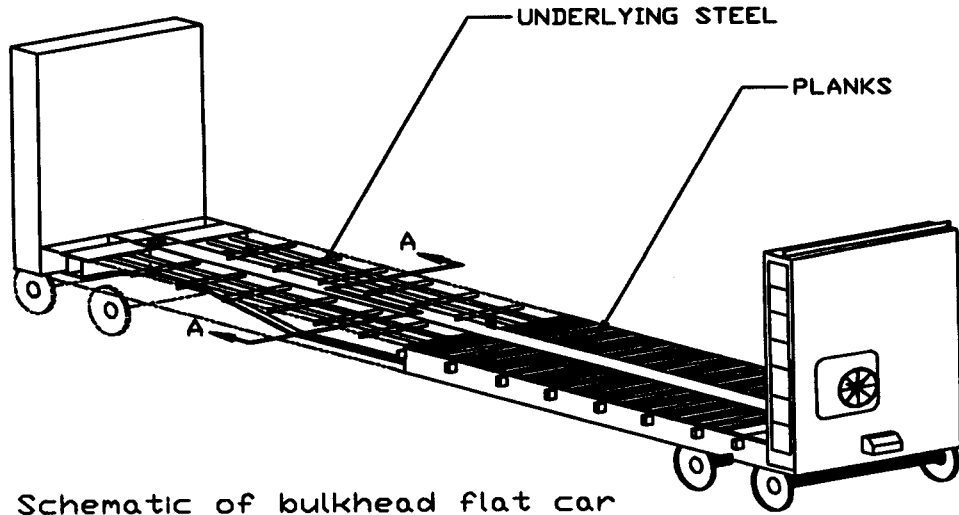
When used in this report, the term 'standard design' refers to the BCMOF standard railcar bridge design shown in Appendix I, and the term 'superstructure' refers to the bridge stringers, deck, and guard rails.

In June 1991, FERIC began gathering information about railcar bridges currently in use by the British Columbia forest industry, and about the strength of used railcar subframes. The BCMOF sourced suitable used railcar subframes and determined that BC Rail Ltd. could supply these (Figure 2). After consulting with FERIC and the Vancouver Region of the BCMOF, the BCMOF's Engineering Section developed a standard design for employing used railcar subframes as superstructures for temporary bridges on forest roads. And, by April 1993, the BCMOF *Engineering Manual* was revised to permit the use of 'used' steel as a construction material, and to include a discussion on the use of railcars as bridge materials (Section 5.3, p.19).

Applying the Standard Design

The standard design meets the structural requirements of applicable Canadian engineering design codes (CAN-S6-88, 1988; CANS16.1-M89, 1989) and BCMOF design standards (BCMOF 1993), and is suitable for construction of low-cost temporary bridges on forest roads. The standard design reflects the experience gained from actual construction of railcar bridges in the Squamish Forest District and elsewhere in the Province.

The standard design, supported by BCMOF drawings, is a general design based on the railcar type and quality as noted on the drawings. The liability associated with



Cross section of A-A

Figure 2. Schematic and cross section of a typical Railwest bulkhead flat car.

the content of the standard design rests with the BCMOF. However, responsibility for the overall bridge design rests with the design engineer retained to prepare general scheme drawings and foundations.

There are limitations on the use of any generic design, and the standard design described here is no different. In some instances it would be inappropriate to use the standard design. First, if a bridge is to be built from railcars of different dimensions or origin than those used in the standard design, or for a different purpose or of different geometry, the standard design does not apply. In such situations a design must be prepared by an experienced professional engineer and approved by a BCMOF Regional Bridge/Structures Engineer prior to construction. Secondly, existing railcar bridges must be assessed and load-rated on an individual basis, and cannot be judged by the specifications of the standard design.

Universal Design Specifications

The following design specifications for loads, load distribution, design code, and material stresses are universally valid, and apply to all forest bridge designs employing railcar subframes.

1. Steel Design Stresses.

Section resistance. The precise determination of the structural strength of a used railcar subframe is extremely difficult because of the railcar's unknown loading history. Therefore, the following conservative strength estimate for used steel (as per CAN3S16.1-M89:5-2.2 (1989), was adopted for the standard design:

Yield strength (F_y) of unidentified steel = 210 MPa.

If the designer would like to consider steel stresses higher than this, formal material testing would have to support his/her opinion. The number of tests and the interpretation of the test results should be done according to Commentary to Clause 12, CAN-S6-88 (1988).

Main railcar box-girders. Designers are advised that only the subframes' main box-girders are of structural value in designing the main bridge girders.

Structural defects. The standard design requires bridge builders to use only subframes with box-girders that have no structural defects, e.g. bends, cutouts, cuts, or excessive rust. Only the area of the box-girder section that can be ascertained to actually carry the load can be used. Where applicable, minor rust allowance should be deducted.

2. Design Loads.

Vehicle eccentricity and load imbalance. The standard drawings (see Appendix I) show BCMOF design traffic

loading, which assumes a 400-mm vehicle eccentricity and a 60-40% side-to-side loading imbalance.

Single-lane bridge. It is assumed that only one vehicle would be on the bridge at any one time.

Design factors. Design loads include impact, and are factored according to CAN-S.6-88 (1988):

Dead Load Factor = 1.2

Live Load Factor = 1.6

Impact Factor = 1.3

Fatigue stresses. Fatigue stresses were not considered because the railcars are expected to be used as temporary bridges in forestry applications (i.e. low-volume applications).

Standard Design Specifications

1. Design Life. Because the condition of the railcar bridge subframes may change significantly over long periods, railcar bridges must be considered only for 'temporary' use (i.e. up to ten years). An inspection program, similar to that required for other temporary bridges, must be implemented and the condition of the bridge assessed every two years.

2. Maximum Spans. The longest clear span between abutments for L-75 or lighter log-hauling trucks is 16.0 m (see Appendix I). Bridges designed for L-100 logging trucks have a maximum span of 13.5 m, and those designed for L-150 trucks have a maximum span of 7.5 m. For each load category (L-75, L-100, and L-150), the span can be less than the specified maximum. For spans of less than 16.0 m, the unused portions of the railcar subframes should be cut off.

3. Bridge Width. The standard design bridge consists of two subframes placed side by side and having an overall width of 5.70 m. The bridge is designed for one lane of traffic with a deck width between curbs of 4.88 m (see Appendix I).

Subframes may be joined together, or left unconnected. If the subframes are joined together, they will display less differential deflection under load. The connection should be made with type 3, A235, M20 bolts spaced at 600 mm along the adjacent side channels.

Some builders of dual-railcar bridges prefer not to join the railcar subframes because some subframes have many stake pockets along their sides. These stake pockets must be removed if the subframes are to be bolted together. Also, handling the two 2.85-m wide subframes separately facilitates both preconstruction at a shop facility and transportation on public highways. Finally,

subframes can be used independently as access bridges for light truck traffic.

4. Highwater Foundations and Clearance. Foundations do not form part of the standard design, and must be designed individually according to local site conditions. The most important site-specific variables that may change from crossing to crossing are: clearance required under the bridge soffit (depending on local high water flood levels), and foundation conditions.

The minimum high water clearance, based upon a 50-year flood, must not be less than 1.50 m and may need to be more depending on local conditions. Refer to Chapter 5 of the BCMOF *Engineering Manual* (1993) for more information.

The superstructure detailed on the standard drawings can be used with many types of abutments, including timber cribs and concrete blocks. Detail of the bearing plate-to-abutment arrangement is shown in Appendix I. If there is any doubt about the ability of the underlying soils to support a spread footing, or about the stability of the crib abutment, it is recommended that a thorough investigation be conducted by a qualified soil specialist.

5. Railcar Type. The 16.6-m long bulkhead flat car subframes considered as bridge components in the standard design are manufactured by Hawker Siddeley Canada Inc. or Railwest Manufacturing Company (Figure 2). If a bridge is to be built from subframes of different dimensions or origin, or for a different purpose, or with a different geometry or loading than in the standard design, the same procedures that apply to other bridges on forest roads in British Columbia must be followed. Information and/or approval for construction procedures can be obtained from the BCMOF Regional Bridge/Structures Engineer. As well, use of riveted subframes in a 'custom' design is acceptable as long as a professional engineer prepares and certifies the design, based on stress values obtained through material testing results.

Railcar subframes appropriate for use with this standard design are available from BC Rail Ltd. Arrangements should be made through, or further information is available from, BC Rail Ltd.'s asset disposal agent.

BC Rail Ltd. is currently offering Hawker Siddeley Canada Inc. and/or Railwest Manufacturing Company bulkhead flat cars, subject to availability, for \$2500 each, all taxes extra (FOB Squamish, or Prince George), less wheel truck sets, couplers, and brakes. Buyers must arrange for the removal of wheel truck sets, couplers, and brakes. However, currently all bulkhead flatcars from Hart Siding are sold with bulkheads, wheel truck sets,

couplers, and brakes removed at no extra charge. For \$500-1000 extra, the railcars will be delivered to any BC Rail Ltd. siding for off loading by the buyer.

6. Railcar Dead Load. The weight of the Hawker Siddeley or Railwest railcar subframes, calculated in the design using a unit weight of steel equal to 77 kN/m^3 , is estimated to be 18 t when stripped of bulkheads, wheel truck sets, couplers, brakes, and wood deck. The design also accounts for the dimensional changes in the cross section of the main girder along the car's length (see the superstructure elevation in Appendix I).

7. Inspection and Approval of Railcar Subframes. All railcar subframes considered for use with the standard design must be inspected and approved, prior to bridge construction, by a professional engineer registered in British Columbia. The engineer will inspect and approve for use as bridge components only subframes with the following qualities:

- bulkhead flat car configuration
- manufactured by Hawker Siddeley Canada Inc. or Railwest Manufacturing Company
- welded construction only (i.e. riveted construction is not acceptable because the interior condition of riveted connections cannot be visually assessed)
- free from excessive rust
- in good condition, having main subframe members that are not bent, damaged, or do not have broken welds

Railcars that were discarded for reasons other than structural damage should be selected. When this is not possible, railcars should be carefully inspected to determine the extent of structural damage in light of the above selection criteria. The two most common types of damage that lead rail companies to discard bulkhead flat cars are leaning bulkheads, and bent or missing crossbearers. These types of damage commonly result from load shifting and derailments. Outward leaning bulkheads may have bent the ends of the subframe girders at the gusset attachment points. This is usually not a concern for railcar bridges, however, because the bent sections are cut off on all but the longest (L-75 rated) spans. As only the main box-girder of the subframe is capable of carrying the wheel loads of L-75 log trucks, the condition of crossbearers is not critical in bridge applications. A subframe may also show signs of metal fatigue. The inspecting engineer should look closely for fatigue cracking, particularly where the railcar's wheel truck sets attach to its main girders.

The pairs of subframes selected for a bridge must be compatible in condition and made by the same manufacturer. Subframes with substantially different amounts of rust and damage should not be paired together.

8. Preparing Railcar Subframes for Installation. Prior to installation, the railcar subframes must be stripped of all additional components and assemblies such as bulkheads, rods, wires, and wheel truck sets. If the subframes are to be joined together, the stake pockets previously used to mount wooden stakes must be removed from the two mating sides.

All original decking must be removed despite its condition, and a regular bridge deck reconstructed with new grade one or two Douglas-fir crossties and decking. Keeping the original decking is not permitted as it may promote rot through the collection of soil and moisture, and it obscures viewing of the new crossties and decking from underneath. Use of pressure-treated wood components is not specified by the standard design; however, longer service life of the decking can be expected if treated materials are used.

The crosstie schedule is shown in Table 1. Crossties shall be placed at 400 mm on-centre and fastened to the subframe girders with crosstie bolting clips at every fourth crosstie. The crosstie bolting clips should be 150 mm x 150 mm x 6 mm angle (350AT or 350W steel), and welded or bolted to the main box-girder every 1600 mm (i.e. at every 4th crosstie). The crossties should be attached to the tie clips with M16 bolts, washers, and hex nuts, as shown in Figure 3.

Quality Assurance, Approval, and Inspection Procedures

1. Quality Assurance. A person or company intending to build a bridge with railcar subframes should define the exact type and condition of subframe required and deal only with suppliers qualified to provide the subframes as specified. It is the responsibility of the proponent to arrange for a professional engineer to inspect

Table 1. Crosstie Schedule

Load rating	Crossties	
	Size (width x height) (mm)	Spacing (centre-to-centre) (mm)
L-75	200 x 250	400
L-100	200 x 300	400
L-150	250 x 300	400

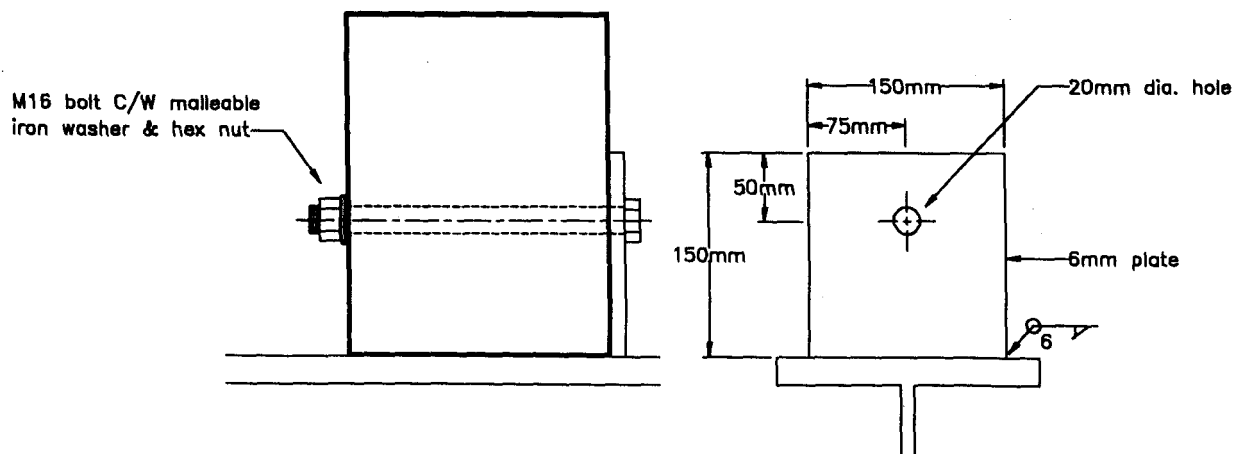


Figure 3. Detail of crosstie attachment.

the subframes prior to construction, and to certify that all the design requirements have been met.

Field construction staff should be provided with construction specifications based upon the standard design. An as-built inspection should be conducted to ensure adherence to design specifications. For each new bridge, documentation should be kept of the origin of the subframes, the approval for construction by the BCMOF Regional Bridge/Structures Engineer, and the as-built drawings (BCMOF 1993).

2. BCMOF Approval Process. To include the construction costs of a railcar bridge in stumpage appraisal, a licensee must first obtain BCMOF approval to build the bridge. Use of the standard design should streamline the approval process and reduce the design costs of the structure. However, the standard design is for the bridge superstructure only. Foundations vary with soil and hydrologic conditions, and must therefore be designed individually. A detailed drawing showing site plan and elevation, with high water level, soffit clearance and a detailed plan of abutments, must be submitted to a BCMOF Regional Bridge/ Structures Engineer for approval, prior to construction (BCMOF 1993). Railcar bridges are appraised by the BCMOF as 'temporary'—that is, equivalent to log-stringer bridges, regardless of actual cost overruns beyond that value.

3. Bridge Inspection. Some risk is inherent with the use of used railcar subframes as bridge superstructures because the degree of steel fatigue incurred in railway service is unknown. The risk of failure due to fatigue cracking can be reduced, however, through the incorporation of appropriate safety factors in the design, careful and thorough inspection, and strict adherence to the design specifications. However, even these measures do not fully guarantee that the used steel will not develop fatigue cracks in-service. For this reason, it is required that a thorough visual inspection of the railcar bridge be conducted every two years, as is the practise for other temporary bridges. When inspecting the subframes for cracks, particular attention should be paid to the portion of the subframe resting on the abutment and the previous attachment points of the railcar wheel truck sets.

COST ANALYSES

The cost of constructing a forest road bridge using railcar subframes as superstructures is influenced by a variety of factors, many of which are site specific. For this reason, this report estimates only superstructure-related costs and the reader is directed to compute overall bridge costs according to local conditions.

The analyses include a cost for the log stringers based upon 1994 market value. A comparison of the construction costs of four different temporary bridge superstructures (railcar subframe, log-stringer, gravel-over-log stringer, and steel-girder) is presented in Appendix II. A second analysis, comparing the construction and maintenance costs anticipated over 40 years for four bridge superstructures (railcar subframe, log-stringer, steel-girder with both wood and concrete deck) also appears in Appendix II.

Analyses of construction costs indicate that a standard design railcar subframe superstructure is competitive with comparable temporary log-stringer and steel-girder superstructures (see Tables II-A, II-B, II-C, and II-D). A 6.1-m long standard design railcar superstructure is estimated to cost \$17 100, or approximately \$2800 per metre of span. A 12.2-m long standard design railcar superstructure is estimated to cost \$20 700, or approximately \$1700 per metre of span. The difference in cost of \$1100 per metre may be attributable to the economies of scale possible with longer spans. Gravel-over log-stringer superstructures were estimated to cost approximately \$9500 less than the other three superstructures because of their reduced material requirements and construction simplicity. Shorter life spans and concerns about stream degradation during removal, in addition to a general shortage of appropriately sized logs, however, may limit opportunities for use of gravel-over log-stringer bridges.

The second analysis, conducted to compare the costs of various superstructure alternatives having different life spans and maintenance requirements, found that the 10-year life of the standard design railcar superstructure makes it uneconomic when compared to permanent steel-girder superstructures. Over the 40-year period, the costs of the superstructures, expressed in 1994 dollars, were: standard design railcar subframe, \$58 172; log-stringer, \$80 443; steel-girder with wooden deck, \$35 137; and steel-girder with concrete/asphalt deck, \$33 056. The significant difference in costs over 40 years is largely due to the expense incurred in replacing the temporary superstructures every 10 years. In fact, for the first 10-year period, the overall cost of the standard design railcar superstructure is \$3100-10 300 less than the alternatives over the same time period.

The cost of maintaining a superstructure throughout its life influences overall costs and these should be considered when deciding between superstructure alternatives. For example, over the 40-year period, repairs to the wooden deck on the steel superstructure made it almost \$2100 more costly than the concrete and asphalt-decked steel superstructure.

CONCLUSIONS

The Engineering Section of the BCMOF Timber Harvesting Branch, in consultation with FERIC and the forest industry, developed a standard design for using railcar subframes as bridge superstructures. The standard design meets the structural requirements of applicable Canadian design codes (CAN3-S16.1-M89: 5-22, 1989; CAN-S6-88, 1988) and of the BCMOF *Engineering Manual* (1993), and is suitable for constructing low-cost, temporary bridges on forest roads in British Columbia. The liability associated with the content of the standard design rests with the BCMOF. However, responsibility for the overall bridge design rests with the design engineer retained to prepare general scheme drawings and foundations.

The standard design, supported by BCMOF drawings, is a general design based on the railcar type and quality as noted in the drawings. It features two structurally unmodified subframes placed side-by-side, and permits maximum bridge spans of 16.0 m, 13.5 m, and 7.5 m for L-75, L-100, and L-150 traffic loadings, respectively. The standard bridge design is for bridge superstructures only, as the foundations and general design scheme depend on individual site conditions.

With the decrease in availability of large diameter stringer logs, railcar subframes will likely continue to be a popular alternative for temporary forest bridges. Use of the standard design will eliminate the safety and liability concerns present with non-engineered railcar bridges. The standard design also addresses the concern of increasing vehicle weights through its provision for a variety of load ratings.

The standard design is just one example of an acceptable railcar subframe superstructure design. Other designs are also acceptable to BCMOF provided they have been prepared by a professional engineer who is registered in British Columbia. The standard design does not apply to superstructures built with railcar subframes of different dimensions or origin than specified, nor to superstructures built with a different purpose or geometry. The standard design may not be used to load rate or assess an existing railcar bridge.

Through the inclusion of 'used' steel as a structural material in the BCMOF 1993 *Engineering Manual*, and the development of the standard design described in this report, forest bridge builders are now able to utilize low-cost used steel components, such as railcar subframes, in bridges. The design assumptions and specifications included in this report meet the applicable standards and have been provided as design aids.

A standard design railcar superstructure may be expected to have an in-place construction cost that is competitive with most comparable temporary forest bridge superstructures. The high costs of maintaining and rebuilding a standard design railcar superstructure over the long term make it uneconomical for use in permanent crossings.

RECOMMENDATIONS

The standard design described in this report could be made more versatile by including a wider variety of railcar types and bridge configurations. Consideration could be given to including railcars used by Canadian Pacific Railways Limited and Canadian National Railways in a revised standard design, thereby accessing a much larger pool of surplus railcars and a national rail network for their delivery.

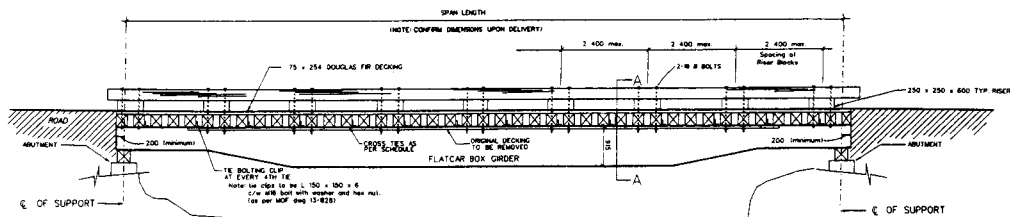
After sufficient numbers of standard design railcar bridges are in service, a review of bridge performance should be made to identify any necessary design modifications and investigate the question of bridge life expectancy.

BIBLIOGRAPHY

- Canadian Standards Association. 1989. *Steel Structures For Buildings - Limit States Design*. Rexdale, Ontario. CSA Standard CAN3-S16.1-M89. 146pp.
- Canadian Standards Association. 1988. *Design of Highway Bridges*. Rexdale, Ontario. CSA Standard CAN-S6-88. 302pp.
- British Columbia Ministry of Forests. 1993. *Engineering Manual*. Victoria. 42pp.
- Nagy, M.M.; Trebett, J.T.; Wellburn, G.V. 1980. *Log Bridge Construction Handbook*. FERIC, Vancouver. Handbook No. HB-3. 421 pp.
- Province of British Columbia; B.C. Hydro and Power Authority; B.C. Rail Ltd. 1993. *Equipment Rental Rate Guide 1993-1994*. Victoria. 99pp.

APPENDIX I
Standard Design: Railcar Subframe
Superstructure for Forest Road Bridges

APPENDIX I



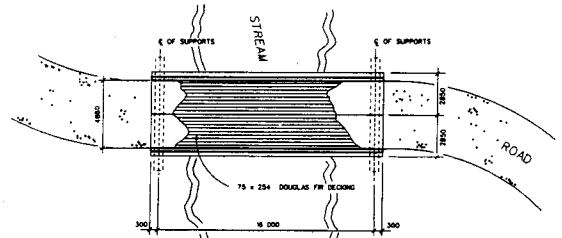
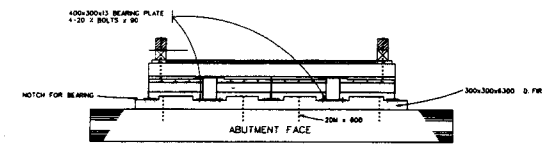
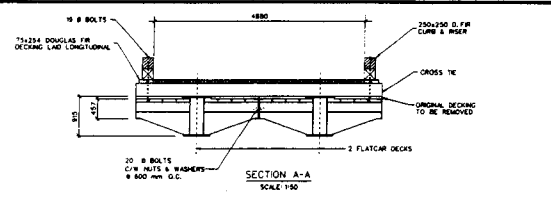
TYPICAL BRIDGE ELEVATION
SCALE: 1/4" = 1'-0"

TIE SCHEDULE		
Load Type	Tie Size	Tie Spacing
L-75	200 X 250	400
L-100	200 X 300	400
L-150	250 X 300	400

SPAN TABLE

Logging Truck	Maximum Supporting Span
<p>LOADING DIAGRAM L-75 OFF HIGHWAY G.V.W. - 68 040 Kg. SCALE: NTS</p>	<p>L-75</p> <p>16 000</p>
<p>LOADING DIAGRAM L-100 OFF HIGHWAY G.V.W. - 90 680 Kg. SCALE: NTS</p>	<p>L-100</p> <p>13 500</p>
<p>LOADING DIAGRAM L-150 OFF HIGHWAY G.V.W. - 136 090 Kg. SCALE: NTS</p>	<p>L-150</p> <p>7500</p>

NOTES: 1) Width of deck (distance between curbs) is 4880 mm for allspan configurations.
2) Unused portions of railway cars (for spans between abutments shorter than 16 000 mm) shall be cut off.



TYPICAL BRIDGE AND SITE PLAN (L-75)
SCALE: NTS

- DESIGN NOTES:**
- The design of the bridge superstructure is based on CSA S-6-88, Limit States Design of Highway Bridges, and CAN/CSA-S16.1-M89, Limit States Design of Steel Structures, as applicable.
 - The design yield strength of used steels 210 MPa.
 - The design live load is a logging truck (L-75, L-100, L-150) with unbalanced load, eccentricity and impact as per MOF standards, and noted on this drawing.
 - Abutments shall be designed individually according to the specific site conditions by a professional engineer registered in B.C.
 - The design of bridge superstructures, as noted on this drawing, is based on using selected type and condition of railcars. The railcars are required for construction of bridges according to this standard design shall be:
 - Manufactured by Hawker Siddalay or Railwest (These cars can be purchased from B.C. Rail in Saanich, B.C.)
 - Welded construction only (not riveted)
 - Free of excessive rust
 - In good condition, with main subframe members that are not bent, damaged or with broken welds
 - The pairs of cars used for a bridge shall be compatible in condition and origin
 - Selected and approved for use as bridge components by a P. Eng.
- If other types or makes of railcars are considered for use as bridge components, this standard design does not apply and cannot be used. A new design must be prepared by a P. Eng., and approved by Regional Bridge Engineer, MOF, prior to construction.

- GENERAL NOTES:**
- Bridges constructed from used railcars shall be built only where a temporary crossing is needed less than 10 years, as specified for the road system in the Access Development Plans. Once taken from the original site, they shall not be re-used on another site unless the cumulative time of service is less than 10 years.
 - The original railcar deck shall be removed and a new system of timber ties and decking shall be applied, as per MOF standard deck design, and noted on this drawing.
 - Approval for construction shall be obtained from Regional Bridge Engineer prior to construction. Do not start construction unless approval has been obtained.

<p>Province of British Columbia Ministry of Forests</p>		<p>SURVEY: _____</p> <p>DESIGN: VERA PROMER P. ENG. 92-05</p> <p>DES. CHECK: _____</p> <p>DRAWING: KERRY COLLINS / VAN BIRNIEY 92-05/17</p> <p>ENG. CHECK: _____</p> <p>APPROVALS: _____</p>	<p>SCALE: AS SHOWN</p> <p>PLOT DATE & TIME: DEC 04, 1992</p> <p>DIGITAL FILE NO: RALCAR2.BRC</p> <p>STANDARD RAILCAR BRIDGE (superstructure from 2 railway flatdeck cars)</p> <p>December 04, 1992</p> <p>REVISION: _____</p> <p>DATE: _____</p>	<p>SHEET 1 OF 1</p> <p>THE PLOT SCALE: 1/32" = 1'-0"</p>
---	--	--	---	--

APPENDIX II
Cost Analyses

Cost of Constructing Four Temporary Bridge Superstructures

Tables II-A, II-B, II-C, and II-D detail the in-place construction costs, in 1994 dollars, of four 6.1-m long temporary superstructures:

- Standard design railcar superstructure
- Log-stringer superstructure, with a wooden deck and curbs conforming to the standard design for railcars
- Log-stringer superstructure, with a gravel deck and log curbs
- Fabricated steel-girder superstructure, with a wooden deck and curbs conforming to the standard design for railcars

A gravel-over log-stringer superstructure is estimated to be the least expensive to construct, while construction costs for the remaining three superstructures are approximately the same. Superstructure costs are strongly influenced by construction complexity, labour rates, and the market price of decking timbers. These cost estimates exclude a number of site specific costs, listed in the footnotes, that must be accounted for to determine the complete construction costs of the bridges. The estimates are for initial construction only and do not include anticipated expenses, such as the costs of inspection, maintenance, deck repair and demolition, or component salvage values.

Construction, Repair, and Maintenance Costs Anticipated Over 40 Years, for Four Bridge Superstructure Alternatives: A Comparison

Figure II-A presents a comparison of construction, repair, and maintenance costs anticipated over a 40-year period for four forest bridge superstructure alternatives:

- Standard design railcar superstructure (10-year life)
- Log-stringer superstructure, with a wooden deck and curbs conforming to the standard design for railcars (10-year life)
- Weathering steel-girders superstructure, with a wooden deck and curbs conforming to the standard design for railcars (40-year life)
- Weathering steel-girders superstructure, with a precast concrete panel deck overlaid with asphalt (40-year life)

A 40-year horizon was chosen in order to compare superstructures with different design lives, and the costs of maintaining each superstructure during this period were discounted to 1994 values. The railcar and log-stringer superstructures are assumed to remain in acceptable condition for 10 years, with demolition and replacement at that time. The costs include initial construction of the superstructure plus routine stringer and deck maintenance anticipated during the service life. However, the costs of maintenance inspections is not included. The analysis expresses future costs as present day before-tax values, assuming an annual inflation rate of five percent.

Table II-A. Construction Costs: 6.1-m (20-ft) Railcar Superstructure Capable of L-150 Loads^a

Quantity	Component	Unit cost (\$)	Total cost (excl. tax) (\$)
Stringer acquisition			
2	Bulkhead flat car	2 500.00	5 000
1 dy	Railcar preparation @ \$176.30/day • 1.35 ^b	238.00	238
1	Initial engineer's inspection	-	500
Deck materials^c			
Fasteners, bearing plates		-	955
102.6 m	0.25 x 0.3-m D-fir crosstie (\$/m)	32.59	3 344
161.0 m	0.08 x 0.25-m D-fir decking (\$/m)	8.15	1 312
13.4 m	0.3 x 0.3-m D-fir treated sill (\$/m)	51.17	686
17.1 m	0.25 x 0.25-m D-fir curb (\$/m)	27.17	465
Installation of superstructure			
5 days	Launch & deck construction @ \$153.76/day • 1.35 + \$24/day ^b	231.58	1158
12 h	Excavator, all found hourly rate ^b	157.00	1884
8 h	Front-end loader, all found hourly rate ^b	106.00	848
2 days	Bridge supervisor @ \$180.56/day • 1.35 ^b	243.76	488
1	Contingency and clean-up costs ^d	-	223
Total			17 100

^a The following costs were not included in the estimates:

- Costs dependent on bridge site location such as for transporting railcar subframes, log stringers, and decking materials from point of sale, as well as for equipment mobilization and demobilization.
- Disposal costs for the superstructure.
- Costs of abutment design and construction, road approach work, and site investigation work.
- Cost of log-stringer selection, falling, skidding, loading, and transportation to a mill or storage yard. It was assumed that these costs were already factored into the market price of the logs.
- Transportation costs. The 18-t weight of the railcar subframes usually necessitates only one subframe per low boy truck when transporting on provincial highways. When transporting by rail, stability concerns usually limit the load to two stacked subframes per flatcar (personal communication from Ed Wright, Asset Disposal Officer, BC Rail, Oct. 29, 1993).

^b Labour rates are from the IWA Master Agreement Standard Logging Wage Scale (effective June 15, 1993).

All labour rates include a 35% wage benefit and some include a chainsaw allowance of \$24/day.

All found hourly rates for excavators and front-end loaders are from the *Equipment Rental Rate Guide 1993-1994* (Province of British Columbia 1993).

Log costs are Vancouver log market average values (for the six months ended May 15, 1994).

The number and size of logs in the log-stringer superstructures were as recommended in *FERIC's Log Bridge Construction Handbook* (1980).

^c Wood and fastener costs are FOB Vancouver.

^d Contingency and clean-up costs are estimated, and will vary with bridge span and type.

Table II-B. Construction Costs: 6.1-m (20-ft) Log-Stringer/Wood Deck Superstructure Capable of L-150 Loads^a

Quantity	Component	Unit cost (\$)	Total cost (excl. tax) (\$)
Stringer acquisition			
7	8.0 x 0.61-m dia. F-grade spruce stringer @ \$460/m ³	1 075.44	7 528
3 days	Peeling stringers @ \$148.88/day • 1.35 ^b	201.00	603
Deck materials^d			
2	8.0 x 0.46-m dia. H-grade hemlock curb log @ \$86/m ³	114.34	229
	Fasteners ^c	-	218
91.5 m	0.2 x 0.2-m D-fir crossstie (\$/m)	32.59	2 982
134.2 m	0.08 x 0.25-m D-fir decking (\$/m)	8.15	1 094
Installation of superstructure			
8 h	Excavator, all found hourly rate	157.00	1 256
2 days	Place stringers @ \$153.76/day • 1.35 + \$24/day ^b	231.58	463
4 days	Deck construction @ \$153.76/day • 1.35 + \$24/day ^b	231.58	926
4 days	Bridge supervisor @ \$180.56/day • 1.35 ^b	243.76	975
1	Contingency and clean-up costs ^d	-	326
Total			16 600

^{a-d} See Table II-A footnotes.

Table II-C. Construction Costs: 6.1-m (20-ft) Log-Stringer/Gravel-Over Superstructure Capable of L-150 Loads^a

Quantity	Component	Unit cost (\$)	Total cost (excl. tax) (\$)
Stringer acquisition			
7	8.0 x 0.66-m dia. F-grade cedar stringer @ \$203/m ³	555.60	3 889
Deck materials			
2	8.0 x 0.46-m dia. H-grade hemlock curb log @ \$86/m ³	114.34	229
22 m ³	0.6-m deep gravel, in-place on bridge (\$/m ³)	21.74	478
22 m	Wire rope (\$/m) ^c	9.32	205
12 m	Filter cloth @ \$12/lineal metre	12.42	149
Installation of superstructure			
8 h	Excavator, all found hourly rate	157.00	1 256
2.5 days	Deck construction @ \$153.76/day • 1.35 + \$24/day ^b	231.58	579
2.5 days	Bridge supervisor @ \$180.56/day • 1.35 ^b	243.76	609
1	Contingency and clean-up costs ^d	-	206
Total			7 600

^{a-d} See Table II-A footnotes.

*Table II-D. Construction Costs: 6.1-m (20-ft) Fabricated Steel/Wood Decked Superstructure
Capable of L-150 Loads^a*

Quantity	Component	Unit cost (\$)	Total cost (excl. tax) (\$)
Stringer acquisition			
	Fabricated steel girders	-	7 200
Deck materials			
	Fasteners, bearing plates ^c	-	951
91.5 m	0.25 x 0.3-m D-fir crosstie (\$/m)	32.59	2 982
134.2 m	0.08 x 0.25-m D-fir decking (\$/m)	8.15	1 094
13.4 m	0.3 x 0.3-m D-fir treated sill (\$/m)	51.17	686
17.1 m	0.25 x 0.25-m D-fir curb (\$/m)	27.17	465
Install superstructure			
5 days	Launch & deck construction @ \$153.76/day • 1.35 + \$24/day ^b	231.58	1 158
13 h	Excavator, all found hourly rate	157.00	2 041
2 days	Bridge supervisor @ \$180.56/day • 1.35 ^b	243.76	488
1	Contingency and clean-up costs ^d	-	235
	Total		17 300

^{a-d} See Table II-A footnotes.

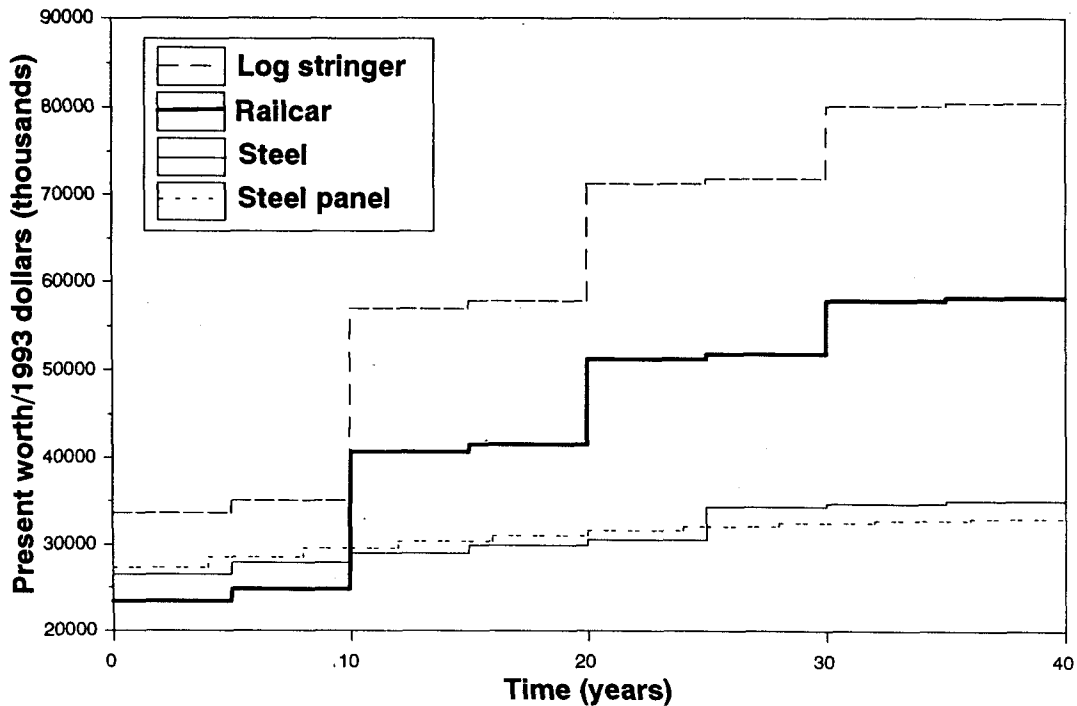


Figure II-A. Superstructure cost comparison for 12.2-m L-75 forest bridges.^a

^a Assumptions:

- Standard Design Railcar Superstructure. The railcars are assumed to be used for 10 years. After 10 years, the superstructure is removed, disposed of, and replaced with successive railcar superstructures, each assumed to last 10 years. Every 5 years, wear planking in the wheel paths is replaced at a cost of \$1800.
- Log-Stringer Superstructure, with a Wooden Deck and Curbs Conforming to the Standard Design for Railcars. The log stringers are assumed to require replacement after 10 years necessitating replacement of the entire superstructure. Every 5 years, wear planking in the wheel paths is replaced at a cost of \$1800. The cost of superstructure removal and disposal is assumed to be \$2000, given that removal occurs when new stringers are placed.
- Weathering Steel-Girders Superstructure, with a Wooden Deck and Curbs Conforming to the Standard Design for Railcars. The weathering steel girders are assumed to last 40 years and require no maintenance. Decking consists of pressure-treated Douglas-fir having a life of 25 years and a replacement cost of \$13 000. Every 5 years, wear planking in the wheel paths is replaced at a cost of \$1800.
- Weathering Steel-Girders Superstructure, with a Precast Concrete Panel Deck Overlain with Asphalt. The weathering steel girders are assumed to last 40 years and require no maintenance. Decking consists of precast concrete panels overlaid with asphaltic concrete 6.5-cm deep, which is assumed to require patching every four years at a cost of \$1500.