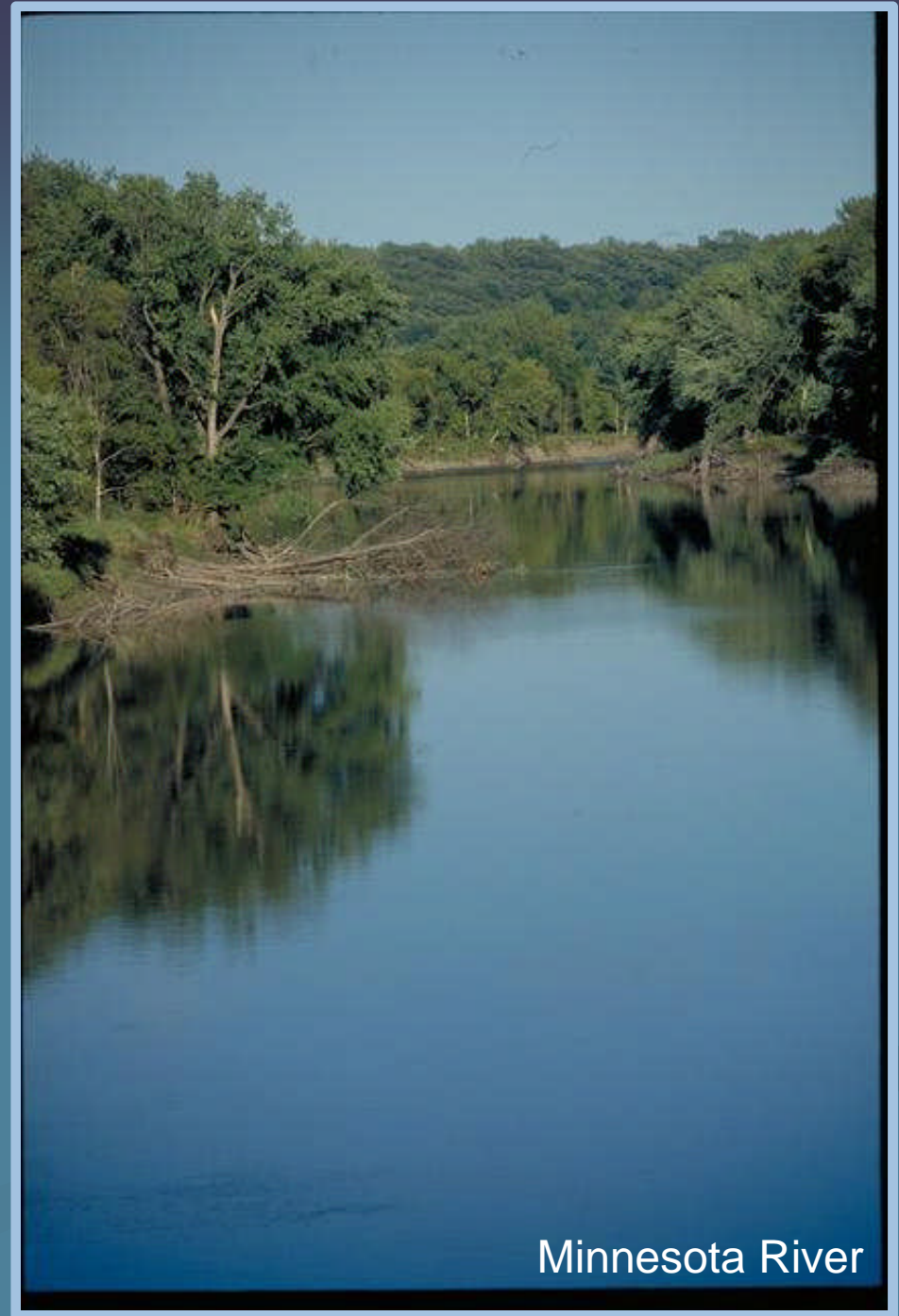


Garry M. Bennett
DNR Area Hydrologist

ProAg of Renville
County
Annual Meeting



February 21, 2012

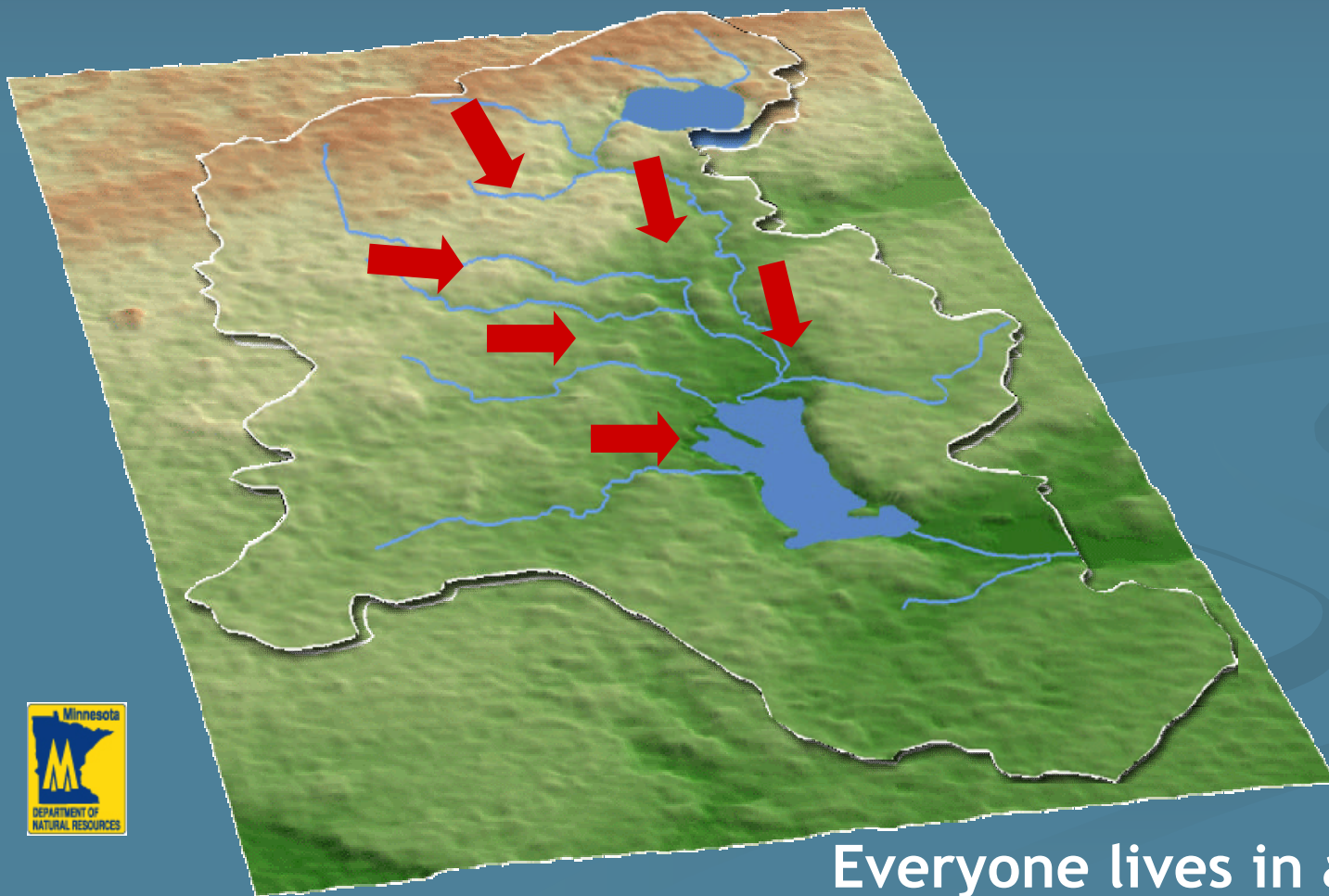


Minnesota River

“Too much water, too fast!”



A watershed is an area of land that drains to a common body of water.



Everyone lives in a watershed.



Minnesota River Basin





Minnesota Pollution Control Agency

NEMO

Our rivers and ditches are moving more water than ever before. Finding new ways to improve drainage will benefit all Minnesotans.

LeSueur River



Repairing stream banks is expensive. Losses from eroded or flooded farmland are adding up. After all, not everyone can live upstream.



Photo Credit: Todd Kolander



Photo Credit: MPR

Wetland Restoration

The CUMULATIVE IMPACT of individuals choosing to restore, enhance and protect can be profound!

We are all part of the SOLUTION!



Changing landuse based on a greater understanding.

LeSueur River Toe Wood



11/16/2011 15:52

LeSueur River Toe Wood



LeSueur River Toe Wood



LeSueur River Toe Wood



garry.bennett@state.mn.us

(320) 234-2550 x230

www.mndnr.gov

