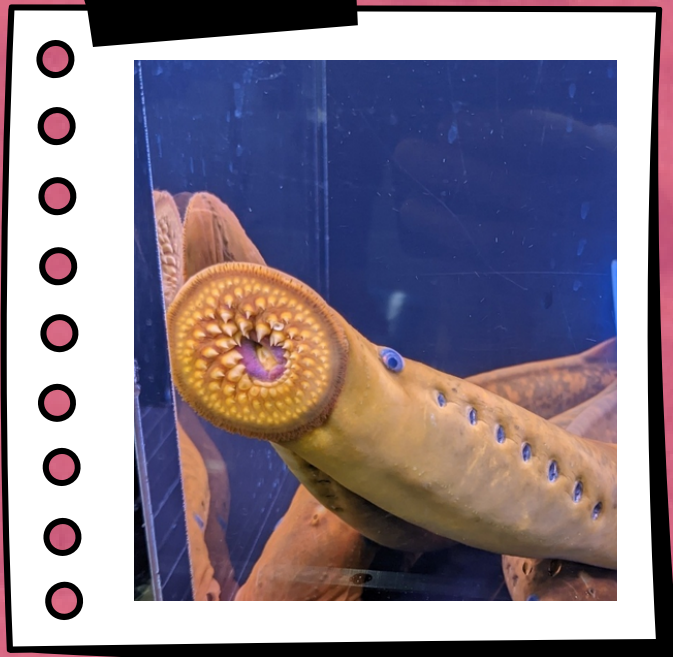


# INVASIVE SPECIES

## Sea Lamprey

### IDENTIFICATION

The sea lamprey is a parasitic eel-like fish that is blue gray to olive-brown with black marbling, large eyes and seven gill openings on each side. The sea lamprey has an average length of 24 inches but has been found as long as 45 inches. They attach to the side of a fish with a suction-cup like mouth, piercing the flesh and consuming the blood and bodily fluids.

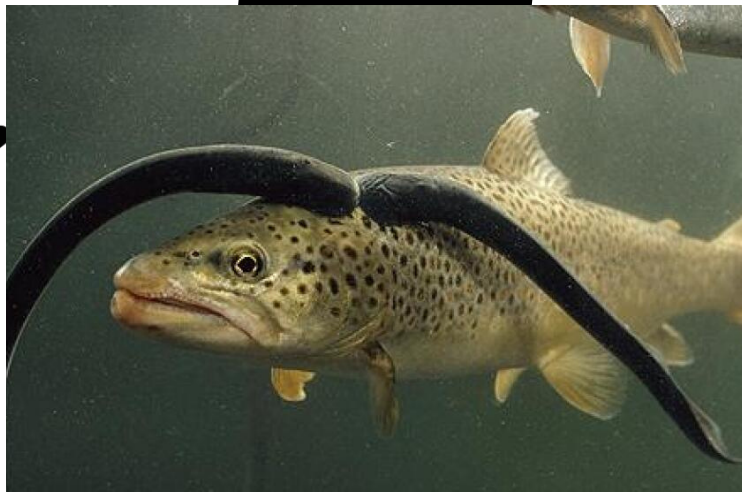


### FEATURES

Sometimes referred to as "vampire fish"

Have lead to decline of several native fish

Suction cup mouth with sharp, hooked teeth



### HABITAT

Sea lampreys are native to the Atlantic Ocean and are found along the North American coast from Newfoundland to Florida. Sea lampreys live in marine environments but spawn in freshwater rivers and streams. This is where the juvenile lamprey live and adults are found in lakes or oceans.



### REPORT

Report sightings to:  
Iron Baraga Conservation District  
(906) 875-3765 or any local conservation district or to the  
Miswest Invasive Species Information Network (MISIN)

