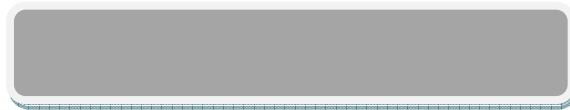


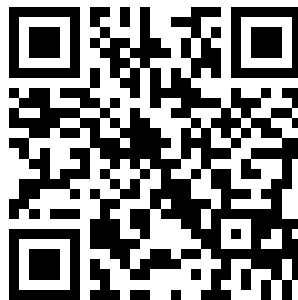


瑞競光電股份有限公司
Competition Dynasty Co.,Ltd.

Edison 3D Theatre



User's Manual



Package Content

- 1 unit of 3D Edison theatre (FHD)
- 1 unit of 3D Edison system included
- 1 unit of Remote Control included
- 1 unit of Power Adapter included
- 1 unit of HDMI Cable (1M) included

Overview

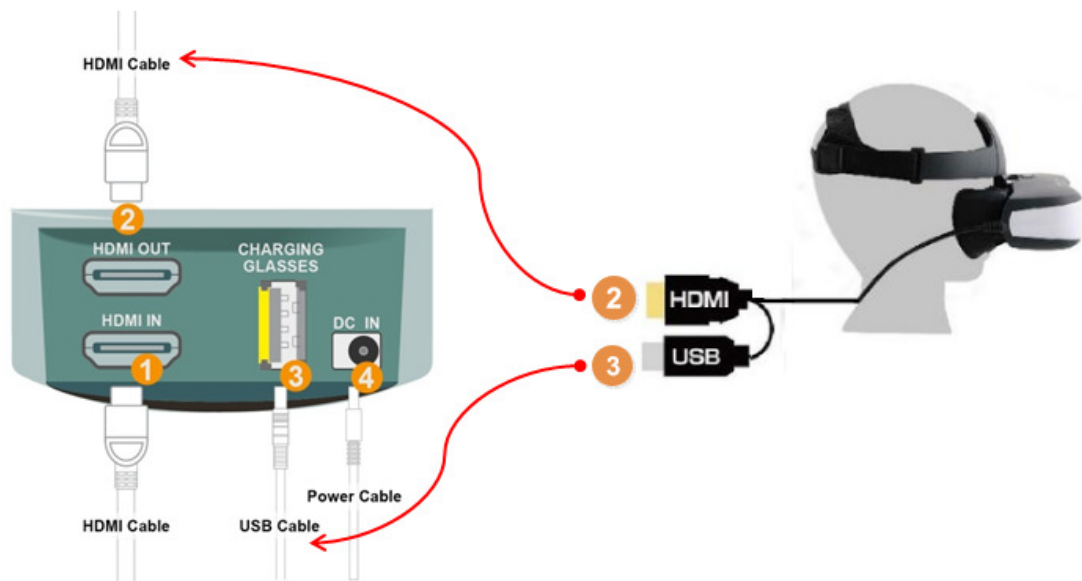
This 3D Edison Theatre Console Complete Package will allow you convert any 2D Image to 3D on 3D theater through HDMI. It can also generation frame rate convert 1080P@24 up to 1080P@60.3D theatre support FHD 1080P at 3D and HD 720P at 2D to 3D mode.

To use your 3D Edison:

With power adapter

Plug all cables to the appropriate locations on the 3D Edison box

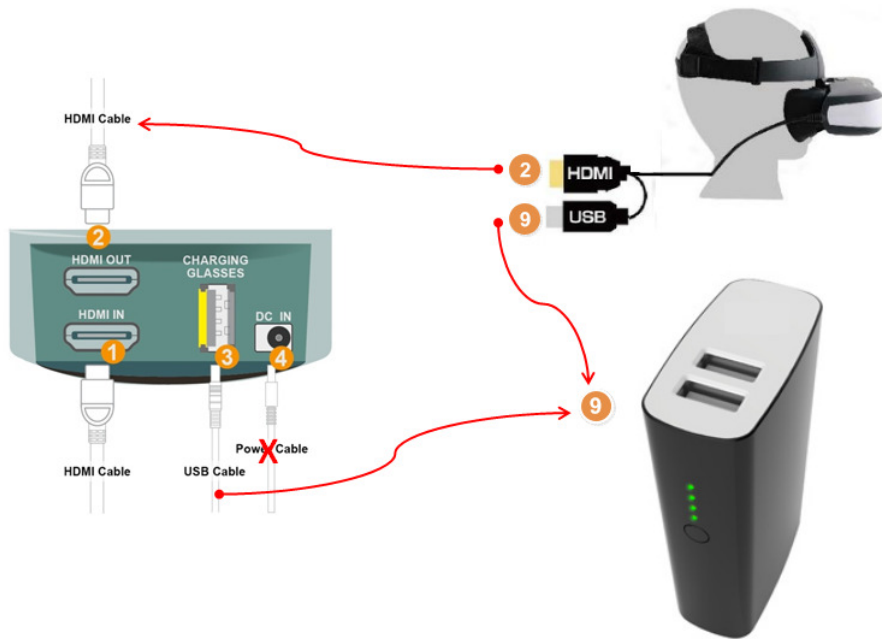
- 1 Connect a HDMI input cable to the HDMI input.
- 2 Connect a HDMI output cable to the 3D Theatre.
- 3 Connect USB cable to 3D Theatre.
- 4 Connect the 3D Edison power supply.



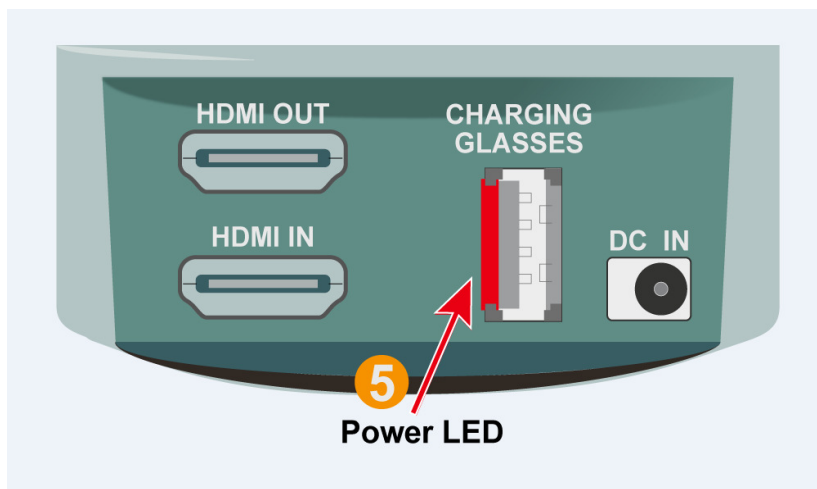
With power pack (Take out everywhere)

Plug all cables to the appropriate locations on the 3D Edison box

- 1 Connect a HDMI input cable to the HDMI input.
- 2 Connect a HDMI output cable to the 3D Theatre.
- 3 Connect USB cable to power pack.
- 4 Don't connect the 3D Edison power supply.
- 9 Connect 3D Theater to power pack



The status of the red power led



The **5** power LED will glow red when in use. When the power cable input the power LED will quickly turn on, then BLINKING and waiting receives HDMI signal transit, and then on permanently to indicate that the 3D Edison handshake has been completed.

The status of LED in red may be used for troubleshooting:

LED OFF: Insufficient power. Use the 3D Edison power supply.

LED BLINKING: The 3D Edison is receiving power and is ready to accept an HDMI signal. (The 3D Edison into save power mode)

LED ON: The 3D Edison is powered and receiving and decoding the HDMI signal.

Buttons on Remote and functional



【Power Button】

Try to go nearly as possible to 3D Edison to power it on. IR must be within good range and in line of sight. Once you press the power button, the LED light behind 3D Edison goes red.



【3D Button】

Press it once and it should turn your screen blurry meaning you are in 3D mode. It is converting a 2D image to 3D with a press of this button.



【Directional Buttons】

These are the directional buttons. You'll be using this for cycling through different settings and hitting "Ok" to set the setting etc.



【OSD Button】(on-screen display aka menu).

Here's where you'll access pretty much all the settings for 3D Edison except for the settings for the glasses.



【OSD Exit Button】 (aka return/back button)

Let's you go to your previous step or exit out of the OSD.



【Glasses Button】

This open up a setting that's not available in the OSD menu. You get a menu with 2 panel settings: LV and SL. You can adjust both panel LV and SL from 1-9. This is basically where you try to get rid of any ghosting issues.



【HD Button】

TV be compatible with 3D Edison if it's not compatible with FHD.

 **【FHD Button】**

Enjoy content in Full HD if your TV has Full HD capability.

 **【TV Button】**

To change things back to normal.

 **【VR Button】**

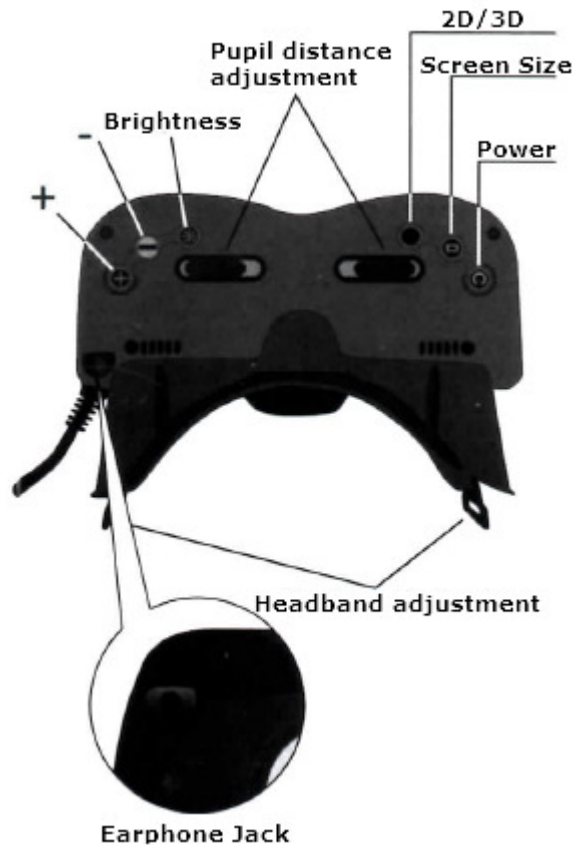
This is for people with Virtual Reality headsets. So, if you want to experience what guessing is limited VR this is for you.

 **【3D Depth Buttons】**

Left (purely white arrow) and right (black arrow with outer white line) arrows. The left arrow when pressed for the first time is adjusting for the inward setting. The left arrow when pressed during the inward or outward setting just cycles through their settings (but doesn't change to inward or outward.) The right arrow when pressed for the first time is adjusting the outward setting. The right arrow when pressed during the inward or outward setting just cycles through their settings (but doesn't change to inward or outward.) There are three settings to cycle through: weak, medium, and strong.

【Mute Button】

Pressing it makes no difference.



Support myopic up to 500 degrees. Not support astigmatic eye-sight.
Circle the ring counterclockwise for your right eye and left eye respectively.

Power on :Press Power button for 3 seconds

Power off :Press Power button for 4 seconds

Power	Turn on: press and hold for 3 seconds Turn off: press and hold for 4 seconds
+ / -	Volume +, Volume -
Brightness	Press Brightness then press + / - to adjust the brightness
Screen Size	Adjust the screen size to 100%, 90%, 80%
2D/3D switch	There are many 3D video formats in the world, the BIGEYES H1 can support 3 most common formats: "Blu-ray 3D", "Side-by-Side Horizontal", and "Top-and-Bottom" 1.The BIGEYES H1 can play "Blu-ray 3D" video without pressing the switch. 2.Press 2D/3D switch to play "Side-by-Side Horizontal" video, press again to back to 2D mode. 3.Press and hold 2D/3D switch for 3 seconds to play "Top-and-Bottom" video, press again to back to 2D mode.

Quick Start Guide(3D Edison + 3D Theatre)

1. Plug all cables to the appropriate locations on the 3D Edison box

① Connect a HDMI input cable to the HDMI input.

② Connect a HDMI output cable to the 3D Theatre.

③ Connect USB cable to 3D Theatre.

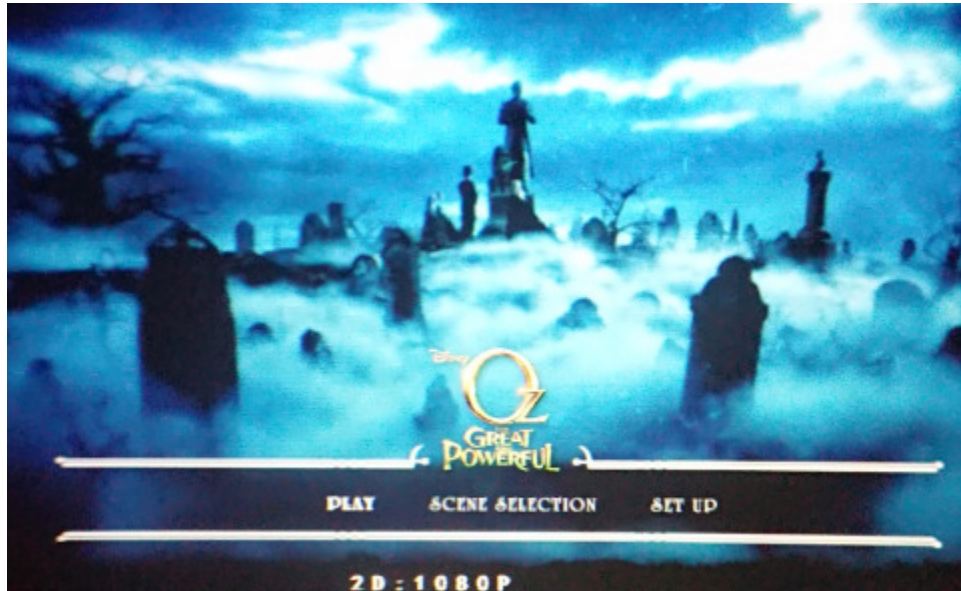
④ Connect the 3D Edison power supply.

2. Grab the remote that was included in the packaging. Place the batteries and also, make sure the batteries are alive.

3. Press **【Power Button】** on the remote towards 3D Edison to turn on system and check power led states.

4. Press **【Power Button】** on 3D Theatre (3 sec).

5a. HDMI Input is 3D Blue-ray DVD:
Stay on selection menu of Movie.



Press **【VR】** on remote > **【FHD】** on remote > **【3D Button】** on 3D Theatre

(1) Press **【VR】** on remote: You will get side by side screen@720P



(2) Press [FHD] on remote: You will get side by side screen@1080P



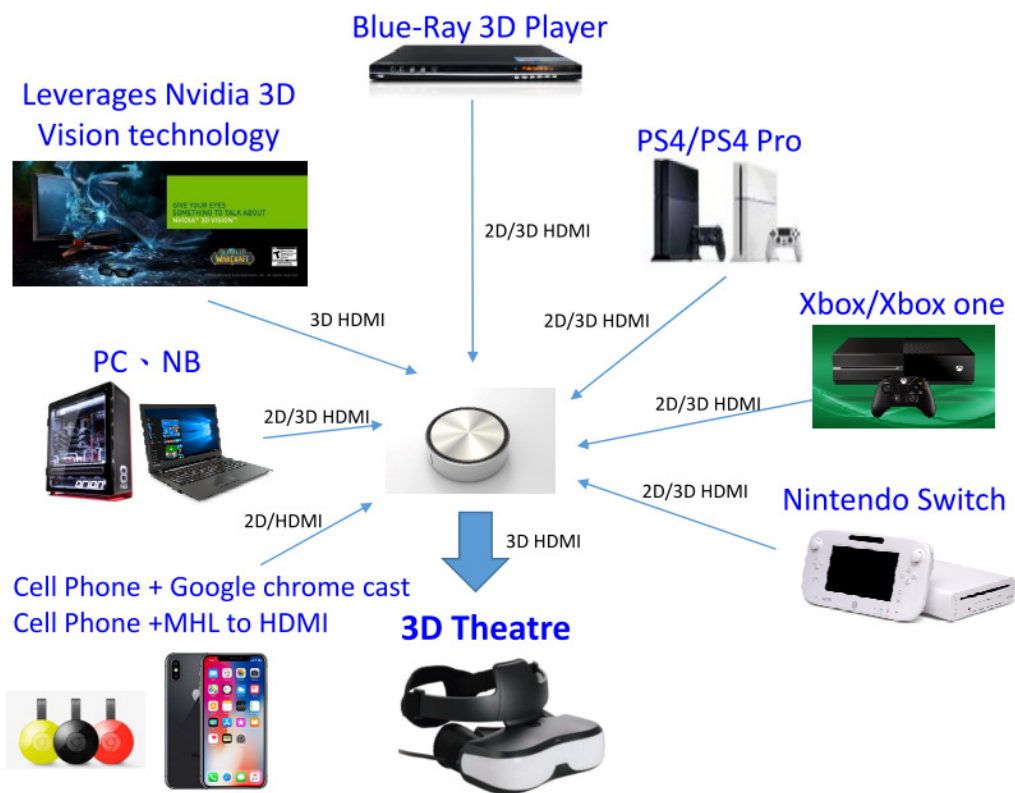
(3) Press [3D Button] on 3D Theatre: You will get 3D screen L/R@1080P



5b. HDMI Input is 2D format:

Press **[VR]** on remote > **[3D]** on remote > **[3D Button]** on 3D Theatre

Specifications



Product Specifications

3D Edison Theater

- 2D to 3D conversion : Side by Side (Half)
- Support power pack to take it any where
- Support Resolution : FHD/HD/480P
- HDMI inputs resolution : FHD/HD/480P (24Hz/60Hz) Supported
- 3D Input Format :Side by Side (Half)/Top and Bottom/Frame Packing
- Adjust Screen Size 100%,90%,80%
- Support myopic up to 500 degrees
- Circle the ring counterclockwise for R/L eye
- Power Supply: DC 5V/0.5A
- System Weight: 250(g)

3D Edison system

- Support HD/FHD/4K 2D TV.
- Support 4K 2D TV / 4K Active 3D TV @FHD Mode.
- With chargeable shuttle RF2.4G 3D glasses, simply focus to have clear 3D image.
- Depth of field adjust available.
- Leverages NVIDIA `s award winning 3D Vision technology .
- HDMI inputs resolution : FHD/HD/480P (24Hz/60Hz) Supported
- HDMI outputs resolution : FHD/HD (60Hz)Supported
- 3D Input Format : Side by Side (Half)/Top and Bottom/Frame Packing
- 3D Output Format : 3D Frame Packing/Side by side supported
- 2D to 3D conversion.
- 2D Bypass,3D Bypass
- HDCP1.2/HDMI 1.4a
- 2D to 3D Image:
 - (a) 6 stage adjustment for Depth of Field
 - (b) In world 3 levels
 - (c) Out world 3 levels
 - (d) user mode support
 - [Movie][Game][Picture][Text]
- Power Supply:
 - (a)AC100V-240V , 12VDAC/0.5A
 - (b)CEC&DOE
 - (c)LEVEL VI Compliant
- System Size: 3.5(Ø)x 10(H) cm
- System Weight: 300(g)

Trouble shutting

For more new information, please visit our website.



www.xu-yun.com