

WHICH HOSPITAL IS THE CHEAPEST?

CONDITION	HOSPITAL	WARD	MEDIAN MEDICAL BILL	CONDITION	HOSPITAL	WARD	MEDIAN MEDICAL BILL
<p>STROKE</p>	TTSH	A	\$5,322	<p>BRONCHITIS AND ASTHMA</p>	KKH	A	\$2,479
	TTSH	B1	\$3,320		NUH	B1	\$913
	CGH	B2	\$1,741		NUH	B2	\$462
	TTSH	C	\$1,320		NUH	C	\$420
<p>HEART FAILURE</p>	NUH	A	\$3,558	<p>CHEMOTHERAPY</p>	TTSH (UNSUBSIDISED)		\$3,355
	KTPH	B1	\$2,309		NUH (SUBSIDISED)		\$50
	NTFGH	B2	\$893				
	NTFGH	C	\$779				
<p>DIABETES</p>	CGH	B1	\$2,231				
	NTFGH	B2	\$824				
	NTFGH	C	\$730				

GROSS MEDICAL INFLATION RATE
= **10% FOR SINGAPORE**

Shares

[BACK TO MAIN BLOG](#)

Singaporean's Guide To Cost Of Hospitalisation Treatment: Which Hospital Is The Cheapest?

Ming Feng
12th June 2019

... caffeine into digestible finance content. You can contribute your thoughts like Ming Feng [here](#).

... n read

... really cheaper for Singaporeans to die than to fall sick?

... did a little bit of research on the cost of a funeral and that of medical treatment in Singapore. Turns out, an 'atas' funeral can cost Singaporean up to \$11,000. The cost of cancer treatment? Up to \$17,000 per month.



Singapore's Medical Cost Inflation vs The World

The rising cost of medical treatment scares the hell out of most Singaporeans.

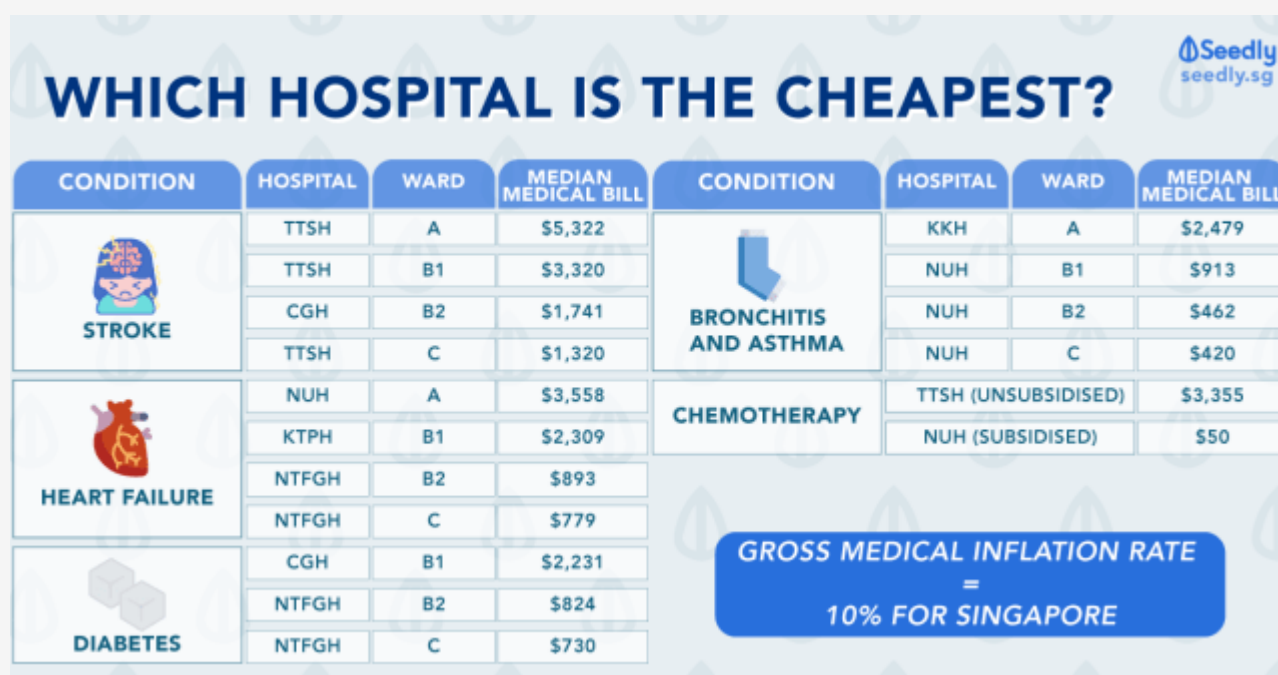
In the year 2018, Singaporeans experienced a gross medical inflation rate of 10%. This number towers Singapore's headline inflation of 0.4%.

Country/ Region	2018 Medical Trend rate Experienced	2019 Projected Medical Trend Rate
Global	9.7%	9.6%
Canada	8.5%	8.5%
China	9.7%	10.2%
Hong Kong	9.3%	9.1%
India	8.5%	9.3%
Indonesia	11.0%	10.5%
Malaysia	13.4%	13.6%
Phillippines	13.0%	13.7%
Singapore	10.0%	10.1%
South Korea	6.0%	5.0%
Taiwan	11.5%	9.1%
Thailand	7.9%	8.5%
Vietnam	14.5%	14.2%
Australia	4.0%	3.3%
New Zealand	8.0%	7.0%

Source: Mercer

With the ageing population, the demand for healthcare will be constantly on the rise. This increment in demand will drive the cost of medical treatment even higher, should the supply of healthcare fails to catch up.

Which Hospital Is The Cheapest For The Different Type Of Hospitalisation Treatment



Condition	Ward	Hospital	Median Medical Bill (\$)
Stroke	A	TTSH	5,322
	B1	TTSH	3,320
	B2	CGH	1,741
	C	TTSH	1,320
Headache	A	NTFGH	1,735
	B1	TTSH	1,707
	B2	NTFGH	627
Heart Failure	C	NTFGH	503
	A	NUH	3,558
	B1	KTPH	2,309
	B2	NTFGH	893
	C	NTFGH	779
	B1	CGH	2,231

Diabetes	B2	NTFGH	824
	C	NTFGH	730
Abdominal Pain or Mesenteric Adenitis	A	KTPH	1,826
	B1	KKH	1,687
	B2	NTFGH	824
	C	CGH	556
	A	KKH	3,412
Respiratory Infections/Inflammations	B1	CGH	1,893
	B2	NTFGH	631
	C	NTFGH	380
	A	KKH	2,479
Bronchitis and Asthma	B1	NUH	913
	B2	NUH	462
	C	NUH	420
Chemotherapy	-	TTSH (Unsubsidised)	3,355
	-	NUH (Subsidised)	50
Heart, Coronary Disease, Coronary Artery Bypass Graft (Open)	B2	NHC	7,342
	C	NHC	5,187

Top 10 Reasons Why Singaporeans End Up In Hospital

We look at the reason why most Singaporeans end up being hospitalised.

Here are the top reasons which got them hospitalised:

- Accident, poisoning and violence
- Cancer
- Pneumonia
- Ischaemic heart diseases
- Intestinal infectious diseases
- Other heart diseases
- Infections of the skin and subcutaneous tissue
- Acute upper respiratory infections
- Cerebrovascular diseases (including stroke)

source: healthhub.sg

Average Cost Of Hospitalisation In Singapore For Various Treatments

Not all hospitals are the same. The immediate difference in medical cost between a private and public hospital is a known fact to every Singaporean.

Assuming the cost of treatments at various hospitals remains constant, a breakdown on all the medical cost for various hospitals will be useful.

The ward you choose will affect the cost of your hospitalisation too. Here are the differences between various ward type:

Type of hospital wards	Description	Subsidy
Class A	Own room with air-con and Television	0%
Class B1	4 beds with air-con and Television	20%
Class B2	6 beds	50% - 65%
Class C	8 to 10 beds	65% - 80%

Editor's Note: We are only focusing on the cost of treatment without complications, given that it is lower in cost. This gives Singaporean a good baseline of the cost.

Cost Of Hospitalisation And Medical Procedures (Ward A)

Condition	Hospital	Average Length Of Stay	25% of Medical Bills Are Less Than (\$)	Median Medical Bill (\$)	25% of Medical Bills Are More Than (\$)
Stroke and Other Cerebrovascular Disorders	TTSH	4.9	3,026	5,322	7,687
	NUH	2.8	2,338	3,619	5,730
Headache	SGH	2.6	2,332	3,918	5,549
	TTSH	2.6	1,571	2,338	3,410
	NTFGH	2.4	1,136	1,735	3,591
	KKH	2.1	1,842	2,440	3,917
Respiratory Infections/Inflammations	KKH	3.1	2,479	3,412	4,497
Chronic Obstructive Airways Disease	CGH	2.3	2,105	2,755	3,964
	KKH	2.1	1,872	2,479	3,067
Heart Failure and Shock	NUH	4.1	2,530	3,558	3,945
	NUH	2.5	1,284	2,251	3,118
	KTPH	2.5	1,471	2,537	3,152

Chest Pain	NHC	2.1	2,681	3,671	4,667
	CGH	1.8	1,261	1,862	2,972
	NTFGH	1.4	899	1,144	1,634
	SGH	2.4	1,720	2,431	3,386
	TTSH	1.9	1,412	2,051	3,141
Digestive Malignancy	TTSH	4.9	609	679	2,620
Abdominal Pain or Mesenteric Adenitis	NUH	1.9	1,347	2,082	3,093
	KKH	1.6	1,798	2,164	3,007
	KTPH	1.9	1,490	1,826	2,667
Non-surgical Spinal Disorders	SGH	4.8	3,610	4,761	7,415
	CGH	3.6	2,599	3,665	4,652
	TTSH	3.4	2,348	3,134	4,560
	NUH	3.3	2,726	3,571	5,312
	NTFGH	3.2	1,931	3,026	5,064
	KTPH	3.1	2,123	2,847	3,453
Kidney and Urinary Tract Infections	NUH	5.2	2,191	3,275	7,379
	SGH	3.6	2,333	4,146	5,879
	KKH	3.4	3,063	3,805	4,641
	CGH	3.3	2,766	4,078	5,113
	NTFGH	2.8	2,284	2,932	4,090
	CGH	2.5	1,779	2,110	3,207
Urinary Stones and Obstruction	CGH	2.5	1,779	2,110	3,207
Menstrual and Other Female Reproductive System Disorders	KKH	1.6	1,410	2,192	3,196
Fever of Unknown Origin	KKH	2.1	2,381	3,448	3,950

Cost Of Hospitalisation And Medical Procedures (Ward B1)

Condition	Hospital	Average Length Of Stay	25% of Medical Bills Are Less Than (\$)	Median Medical Bill (\$)	25% of Medical Bills Are More Than (\$)
Stroke and Other Cerebrovascular Disorders	TTSH	6.0	2,889	3,320	6,416
	SGH	2.1	1,434	2,210	3,994
Headache	KKH	1.9	1,398	2,413	3,042
	TTSH	1.9	1,137	1,707	2,535
Respiratory Infections/Inflammations W/O CC	KKH	2.5	1,557	2,222	2,896
	SGH	2.4	1,351	1,985	3,792
	CGH	2.6	1,652	1,893	2,429
	CGH	2.1	1,328	1,664	1,916

Bronchitis and Asthma	NUH	1.8	580	913	1,285
	KKH	1.8	1,247	1,588	2,050
Heart Failure and Shock	KTPH	3.5	1,547	2,309	3,617
	NUH	4.5	1,899	2,538	3,610
	KTPH	2.6	1,124	1,665	2,938
	NUH	2.0	900	1,648	2,249
Chest Pain	SGH	2.0	1,396	1,915	3,206
	NHC	1.9	1,600	2,384	3,908
	CGH	1.8	975	1,293	2,234
	NTFGH	1.6	703	954	1,518
Digestive Malignancy	SGH	2.7	1,926	2,348	5,214
Abdominal Pain or Mesenteric Adenitis	SGH	1.9	1,502	2,332	2,801
	KKH	1.6	1,336	1,687	2,121
	CGH	4.4	2,461	3,422	4,336
Non-surgical Spinal Disorders	SGH	4.1	2,123	3,858	5,690
	TTSH	3.9	1,229	2,901	4,213
	NUH	3.1	1,615	2,170	3,463
Injury to Shoulder, Arm, Elbow, Knee, Leg or Ankle W/O CC	SGH	3.7	1,790	3,432	4,194
Diabetes	SGH	2.6	2,023	2,800	3,829
	CGH	2.8	1,300	2,231	3,132
Kidney and Urinary Tract Infections	SGH	4.1	2,424	3,443	5,115
	CGH	4.0	2,355	3,010	4,165
	KKH	3.1	2,238	2,749	3,187
	NUH	3.6	1,634	2,050	3,193
Menstrual and Other Female Reproductive System Disorders	SGH	2.1	1,336	1,991	3,160
	KKH	2.0	1,317	1,993	3,037
Fever of Unknown Origin	KKH	1.7	1,066	1,827	2,748
	SGH	2.2	1,788	2,568	3,543

Cost Of Hospitalisation And Medical Procedures (Ward B2)

Condition	Hospital	Average Length Of Stay	25% of Medical Bills	Median	25% of Medical Bills
			Are Less Than (\$)	Medical Bill (\$)	Are More Than (\$)
Stroke and Other Cerebrovascular Disorders	CGH	6.1	1,376	1,741	2,294
	TTSH	6.1	1,430	1,853	2,456
	NTFGH	4.5	1,615	2,074	2,413
	NUH	4.4	1,455	1,939	2,336

Singaporean's Guide To Cost Of Hospitalisation Treatment: Which Hospital Is The Cheapest?

	SGH	4.2	1,619	2,229	3,002
Headache	CGH	2.7	563	1,048	1,338
	SGH	2.7	624	927	1,817
	NUH	2.5	595	938	1,524
	TTSH	2.3	498	774	1,197
	KTPH	2.2	539	697	1,061
	NTFGH	1.9	478	627	1,024
	SGH	3.8	729	1,094	1,642
	TTSH	3.3	780	941	1,530
Respiratory Infections/Inflammations	KTPH	3.2	871	1,187	1,382
	KKH	3.1	789	1,027	1,374
	CGH	2.8	677	893	1,165
	NUH	2.7	586	778	1,104
	NTFGH	2.6	394	631	1,121
		TTSH	4.8	1,037	1,457
Chronic Obstructive Airways Disease	NUH	3.6	774	1,033	1,523
	CGH	3.3	779	1,000	1,450
	SGH	3.1	743	1,027	1,550
	NTFGH	3.0	643	780	1,137
	KTPH	2.9	791	1,056	1,433
	TTSH	2.4	443	738	1,293
Respiratory Signs and Symptoms	NUH	2.2	473	737	1,126
	SGH	2.2	587	759	1,118
	NTFGH	2.1	353	504	902
	CGH	2.0	504	667	1,095
		TTSH	4.0	765	1,106
Bronchitis and Asthma	KTPH	2.9	648	735	1,065
	CGH	2.2	563	716	892
	NTFGH	2.1	436	565	741
	SGH	1.9	565	697	914
	KKH	1.7	584	710	851
	NUH	1.7	337	462	662
		TTSH	4.6	848	1,171
Heart Failure and Shock	NUH	4.6	842	1,290	1,831
	CGH	4.1	1,072	1,369	1,879
	NHC	3.6	1,182	1,599	2,025
	SGH	3.6	895	1,232	1,793
	KTPH	3.5	894	1,119	1,477
	NTFGH	2.6	666	893	1,115

Coronary Atherosclerosis	TTSH	3.0	716	905	1,232
	NUH	2.9	824	960	1,468
	NHC	2.5	843	1,202	1,591
	CGH	2.3	496	769	1,419
	KTPH	2.4	681	985	1,144
Hypertension	TTSH	2.3	265	662	1,099
	CGH	2.3	515	767	1,002
	SGH	1.8	564	742	933
	NTFGH	1.5	340	471	577
Valvular Disorders	NHC	2.0	742	937	1,244
Chest Pain	TTSH	2.8	522	746	1,137
	SGH	2.6	596	898	1,379
	NHC	2.3	781	1,150	1,439
	KTPH	2.2	673	876	1,173
	CGH	2.2	510	757	1,092
	NUH	2.1	491	747	1,086
	NTFGH	1.5	357	473	624
Digestive Malignancy	NUH	5.1	1,161	1,658	2,527
	SGH	4.4	1,066	1,621	2,612
	TTSH	2.4	207	433	1,015
Abdominal Pain or Mesenteric Adenitis	CGH	2.3	644	789	1,036
	SGH	2.3	736	996	1,260
	NUH	2.2	560	800	1,057
	TTSH	2.0	625	777	963
	NTFGH	1.9	553	690	933
Non-surgical Spinal Disorders	CGH	4.9	986	1,425	1,938
	SGH	4.6	1,180	1,902	2,615
	TTSH	4.4	938	1,347	1,880
	KTPH	3.9	967	1,376	1,945
	NTFGH	3.0	655	1,050	1,445
	NUH	2.8	710	1,139	1,687
Injury to Shoulder, Arm, Elbow, Knee, Leg or Ankle	SGH	5.0	880	1,360	2,232
	CGH	4.1	722	1,000	1,434
	NTFGH	2.0	526	891	1,031
	NUH	3.4	376	799	1,383
Trauma to the Skin, Subcutaneous Tissue and Breast	SGH	3.1	725	961	1,354
	TTSH	2.7	452	756	1,232
	NTFGH	1.9	456	694	899

Diabetes	TTSH	3.6	788	1,081	1,553
	SGH	3.3	807	1,143	1,676
	NUH	3.3	621	953	1,520
	KTPH	3.1	787	1,005	1,469
	CGH	3.1	875	1,141	1,506
	NTFGH	2.6	592	824	1,110
	CGH	4.5	962	1,239	1,946
	KTPH	4.0	970	1,324	1,672
Kidney and Urinary Tract Infections	SGH	4.0	921	1,252	1,868
	TTSH	3.7	744	1,021	1,523
	NUH	3.6	836	1,063	1,349
	KKH	3.5	1,048	1,193	1,351
	NTFGH	3.3	722	923	1,282
Urinary Stones and Obstruction	TTSH	2.9	723	1,010	1,646
	SGH	2.8	904	1,179	1,816
	CGH	2.3	698	848	1,370
	NTFGH	2.1	614	806	1,236
	KTPH	2.1	762	983	1,897
	NUH	1.8	681	833	1,518
Menstrual and Other Female Reproductive System Disorders	SGH	2.3	662	941	1,269
	NUH	2.2	476	763	1,126
	KKH	2.1	524	820	1,454
Chemotherapy	TTSH	1.0	434	3,355	4,085
Fever of Unknown Origin	SGH	3.1	808	1,105	1,593
Injuries	SGH	3.1	762	1,264	2,192
	NUH	2.3	472	832	1,090

Cost Of Hospitalisation And Medical Procedures (Ward C)

Condition	Hospital	Average Length Of Stay	25% of Medical Bills	Median	25% of Medical Bills
			Are Less Than (\$)	Medical Bill (\$)	Are More Than (\$)
Stroke and Other Cerebrovascular Disorders	TTSH	6.6	982	1,320	1,878
	SGH	6.5	1,501	1,932	2,999
	CGH	6.2	1,156	1,491	2,154
	NTFGH	5.5	1,198	1,489	1,914
	KTPH	5.0	1,487	1,841	2,170
	NUH	4.4	1,188	1,577	2,246
	KKH	2.6	438	809	1,170

Singaporean's Guide To Cost Of Hospitalisation Treatment: Which Hospital Is The Cheapest?

Headache	SGH	2.5	458	699	1,296
	CGH	2.4	389	654	858
	KTPH	2.4	532	821	1,205
	NUH	2.4	418	636	1,274
	TTSH	2.2	397	643	951
	NTFGH	1.9	393	503	711
Respiratory Infections/Inflammations	TTSH	4.6	552	861	1,362
	NTFGH	3.8	492	665	1,005
	SGH	3.5	622	874	1,353
	KTPH	3.4	665	918	1,267
	NUH	3.0	445	612	882
	CGH	3.0	447	668	969
Chronic Obstructive Airways Disease	KKH	3.0	500	667	892
	TTSH	5.1	711	976	1,336
	SGH	3.8	607	878	1,360
	NTFGH	3.5	549	770	1,051
	NUH	3.4	557	756	1,080
	KTPH	3.2	646	888	1,255
Respiratory Signs and Symptoms	CGH	3.1	616	867	1,154
	TTSH	4.2	428	564	966
	NUH	2.6	383	612	920
	CGH	2.5	421	583	820
	SGH	2.5	391	567	881
	KTPH	2.2	557	771	1,049
Bronchitis and Asthma	KKH	2.0	367	493	733
	NTFGH	1.7	293	380	614
	TTSH	3.3	547	688	900
	KTPH	2.9	585	727	902
	NTFGH	2.5	353	519	692
	SGH	2.2	448	603	860
Heart Failure and Shock	KKH	2.0	423	525	642
	CGH	2.0	415	557	750
	NUH	1.8	307	420	652
	TTSH	4.4	531	790	1,246
	NUH	4.4	605	906	1,260
	NHC	4.3	917	1,191	1,594
Heart Failure and Shock	CGH	4.2	752	1,026	1,403
	SGH	4.0	678	1,033	1,447
	KTPH	3.9	731	991	1,302

Coronary Atherosclerosis	NTFGH	3.1	518	779	1,101
	SGH	3.5	598	878	1,619
	KTPH	2.9	573	748	999
	NUH	2.5	466	618	909
	TTSH	2.3	370	491	732
	CGH	2.2	405	601	869
	NHC	2.1	565	797	1,038
	NTFGH	1.8	310	418	687
Hypertension	SGH	2.7	374	586	1,050
	TTSH	2.6	422	552	737
	NUH	2.5	359	501	857
	KTPH	2.5	563	723	1,177
	CGH	2.4	342	517	718
	NTFGH	1.7	341	469	665
Valvular Disorders	NUH	2.7	473	714	1,005
	CGH	1.8	377	496	753
	NTFGH	1.4	341	509	599
	SKH	3.0	248	454	700
Chest Pain	TTSH	2.8	323	522	812
	NUH	2.7	395	569	879
	SGH	2.7	460	622	964
	KTPH	2.3	542	775	1,005
	NHC	2.2	541	777	977
	CGH	2.2	372	549	814
	NTFGH	1.8	298	406	581
	KKH	1.7	313	425	576
Digestive Malignancy	NUH	6.9	1,153	1,616	2,054
	TTSH	5.4	583	1,115	1,815
	SGH	4.9	768	1,329	2,354
	NTFGH	4.8	490	703	984
	KTPH	3.1	577	681	1,129
Abdominal Pain or Mesenteric Adenitis	NUH	3.5	489	683	1,078
	TTSH	3.3	436	593	1,038
	SGH	2.7	545	731	1,033
	KTPH	2.4	533	766	961
	CGH	2.3	410	556	794
	NTFGH	1.9	424	566	696
	KKH	1.8	470	595	768

Singaporean's Guide To Cost Of Hospitalisation Treatment: Which Hospital Is The Cheapest?

Non-surgical Spinal Disorders	SGH	5.8	900	1,542	2,244
	SKH	5.5	550	953	1,518
	CGH	4.5	725	1,041	1,401
	TTSH	4.3	812	1,126	1,618
	NUH	4.1	630	1,085	1,703
	KTPH	4.0	857	1,246	1,695
	NTFGH	3.9	522	858	1,193
Injury to Shoulder, Arm, Elbow, Knee, Leg or Ankle	TTSH	6.8	529	927	1,396
	CGH	4.3	369	620	1,148
	NUH	4.3	444	677	1,318
	NTFGH	2.6	504	672	861
	KKH	6.0	342	609	1,108
Trauma to the Skin, Subcutaneous Tissue and Breast	SGH	5.1	724	954	1,381
	NUH	5.1	473	747	1,075
	CGH	3.7	499	706	1,069
	TTSH	2.7	411	566	1,024
	NTFGH	2.5	485	571	833
Diabetes	TTSH	4.0	550	794	1,162
	SKH	3.9	535	765	1,094
	KTPH	3.8	736	979	1,317
	SGH	3.6	677	1,004	1,556
	CGH	3.5	627	874	1,328
	NUH	3.3	562	837	1,215
	NTFGH	3.1	491	730	1,027
Kidney and Urinary Tract Infections	SKH	6.5	562	843	1,392
	SGH	5.3	733	1,074	1,559
	TTSH	4.5	592	909	1,300
	CGH	4.2	728	959	1,289
	NUH	4.0	593	851	1,167
	KTPH	4.0	799	1,038	1,303
	NTFGH	3.6	570	768	975
	KKH	3.3	640	758	923
Urinary Stones and Obstruction	TTSH	3.9	557	851	1,459
	CGH	3.6	528	788	1,513
	SGH	3.3	677	948	1,455
	NUH	2.6	418	684	1,106
	KTPH	2.6	695	913	1,457
	NTFGH	2.1	564	698	1,198
	SGH	3.5	540	878	1,422

Menstrual and Other Female Reproductive System Disorders	NUH	2.3	403	639	907
	KKH	2.0	369	527	885
Fever of Unknown Origin	KKH	2.2	386	621	887
	SGH	2.2	488	658	920
	SGH	4.7	597	1,041	1,390
	CGH	3.6	408	665	1,144
Injuries	NUH	3.4	391	693	1,069
	KKH	2.1	325	421	606
	NTFGH	2.1	417	577	869

Cost Of Other Treatment

Treatment	Hospital	Ward	Average Length Of Stay	25% of Medical Bills Are Less Than (\$)	Median Medical Bill (\$)	25% of Medical Bills Are More Than (\$)
Chemotherapy	MEH	Day Surgery	1.0	2,047	3,797	4,695
Chemotherapy	NUH	Day Surgery (Subsidised)	1.0	48	50	52
Chemotherapy	TTSH	Ward B2	1.0	434	3,355	4,085
Heart, Coronary Disease, Coronary Artery Bypass Graft (Open)	NUH	Ward C	13.0	5,672	6,424	7,213
Heart, Coronary Disease, Coronary Artery Bypass Graft (Open)	NHC	Ward C	12.3	5,469	6,353	7,834
Heart, Coronary Disease, Coronary Artery Bypass Graft (Open)	NUH	Ward B2	11.0	7,706	8,633	10,326
Heart, Coronary Disease, Coronary Artery Bypass Graft (Open)	NHC	Ward B2	10.3	7,920	8,658	9,941
Heart, Coronary Disease, Coronary Artery Bypass Graft (Open)	NUH	Ward C	9.2	5,380	5,769	6,346
Heart, Coronary Disease, Coronary Artery Bypass Graft (Open)	NHC	Ward C	8.0	4,626	5,187	5,760
Heart, Coronary Disease, Coronary Artery Bypass Graft (Open)	NHC	Ward B2	7.1	6,667	7,342	7,757
Appendix, Various Lesions, Appendicectomy Without Drainage, Open/Laparoscopic	KTPH	Ward B1	2.0	4,346	4,796	4,923
Appendix, Various Lesions, Appendicectomy Without Drainage, Open/Laparoscopic	TTSH	Ward B2	3.8	2,219	2,328	2,954
Appendix, Various Lesions, Appendicectomy Without Drainage, Open/Laparoscopic	CGH	Ward B2	4.1	2,041	2,491	3,213
Appendix, Various Lesions, Appendicectomy	SGH	Ward B1	2.5	6,045	6,934	7,506

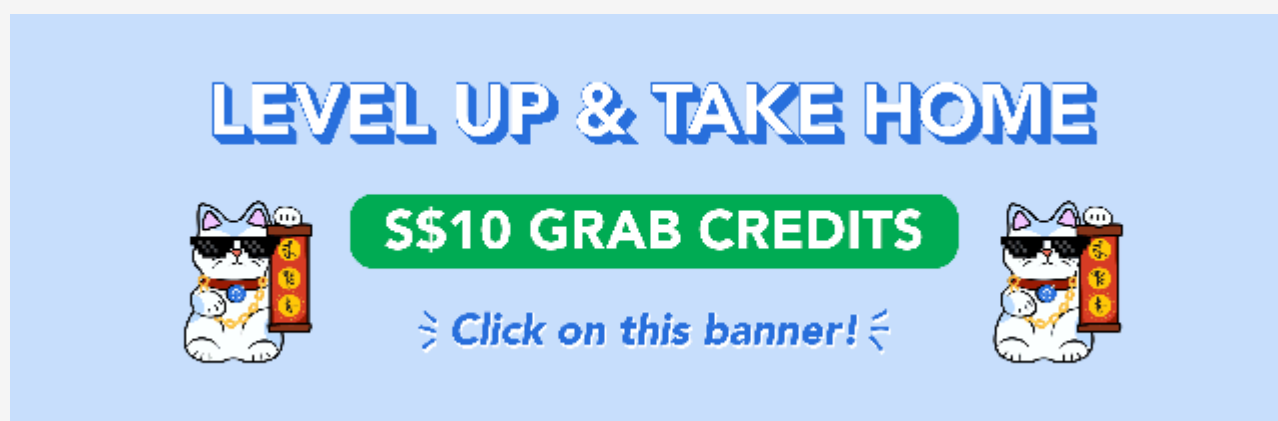
Without Drainage, Open/Laparoscopic							
Appendix, Various Lesions, Appendicectomy Without Drainage, Open/Laparoscopic	KTPH	Ward B1	1.6	4,321	4,531	4,782	
Appendix, Various Lesions, Appendicectomy Without Drainage, Open/Laparoscopic	CGH	Ward B1	1.9	4,693	4,939	5,162	
Appendix, Various Lesions, Appendicectomy Without Drainage, Open/Laparoscopic	CGH	Ward A	2.4	5,642	5,939	6,616	
Appendix, Various Lesions, Appendicectomy Without Drainage, Open/Laparoscopic	NUH	Ward A	2.1	5,345	6,136	6,692	
Appendix, Various Lesions, Appendicectomy Without Drainage, Open/Laparoscopic	KTPH	Ward A	1.9	4,982	5,453	5,975	
Appendix, Various Lesions, Appendicectomy Without Drainage, Open/Laparoscopic	TTSH	Ward A	2.1	5,062	5,643	6,372	
Appendix, Various Lesions, Appendicectomy Without Drainage, Open/Laparoscopic	TTSH	Ward C	2.3	1,429	1,509	1,660	
Appendix, Various Lesions, Appendicectomy Without Drainage, Open/Laparoscopic	KKH	Ward C	2.7	1,691	1,865	1,989	
Appendix, Various Lesions, Appendicectomy Without Drainage, Open/Laparoscopic	KTPH	Ward C	1.4	1,535	1,640	1,731	
Appendix, Various Lesions, Appendicectomy Without Drainage, Open/Laparoscopic	NTFGH	Ward C	1.6	1,282	1,365	1,429	
Appendix, Various Lesions, Appendicectomy Without Drainage, Open/Laparoscopic	CGH	Ward C	2.1	1,220	1,353	1,514	
Appendix, Various Lesions, Appendicectomy Without Drainage, Open/Laparoscopic	NUH	Ward C	2.0	1,476	1,631	1,766	
Appendix, Various Lesions, Appendicectomy Without Drainage, Open/Laparoscopic	KTPH	Ward B2	1.8	1,938	2,122	2,210	
Appendix, Various Lesions, Appendicectomy Without Drainage, Open/Laparoscopic	TTSH	Ward B2	2.3	2,002	2,053	2,248	
Appendix, Various Lesions, Appendicectomy Without Drainage, Open/Laparoscopic	NUH	Ward B2	2.1	1,887	2,083	2,351	
Appendix, Various Lesions, Appendicectomy Without Drainage, Open/Laparoscopic	SGH	Ward B2	2.8	2,345	2,518	2,824	
Appendix, Various Lesions, Appendicectomy Without Drainage, Open/Laparoscopic	CGH	Ward B2	2.1	1,819	1,968	2,124	
Ovary, Tumor/Cyst, Ovarian Cystectomy, MIS /robotic(Complicated) (>5cm)	KKH	Ward B1	1.8	8,462	9,182	10,281	
Ovary, Tumor/Cyst, Ovarian Cystectomy, MIS /robotic(Complicated) (>5cm)	KKH	Ward A	2.0	10,081	11,244	12,707	
Ovary, Tumor/Cyst, Ovarian Cystectomy, MIS /robotic(Complicated) (>5cm)	NUH	Ward A	1.6	6,963	7,076	7,732	
Ovary, Tumor/Cyst, Ovarian Cystectomy, MIS /robotic(Complicated) (>5cm)	KKH	Ward B2+	1.6	4,220	4,572	4,848	

Cervix, Transcervical resection (TCR) Polyp (>2cm), hysteroscopic	KKH	Day Surgery (Unsubsidised)	1.0	2,851	2,882	3,025
Cervix, Transcervical resection (TCR) Polyp (>2cm), hysteroscopic	MNH	Day Surgery	1.0	4,949	5,591	6,349
Cervix, Transcervical resection (TCR) Polyp (>2cm), hysteroscopic	TMC	Day Surgery	1.0	5,351	7,152	8,393

Become A Prodigy!

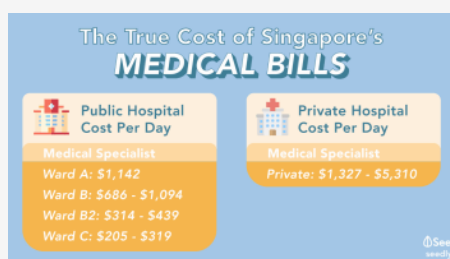
Are you game to level up to level 4 and take home a **S\$10 Grab Voucher**?

Start leaving your mark [here!](#)

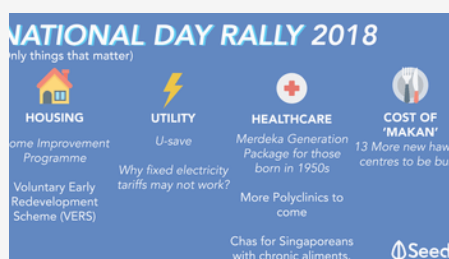


SHOW US SOME LOVE! If you like what you've read, join us on our personal finance journey at [Facebook](#) and [Telegram](#)!

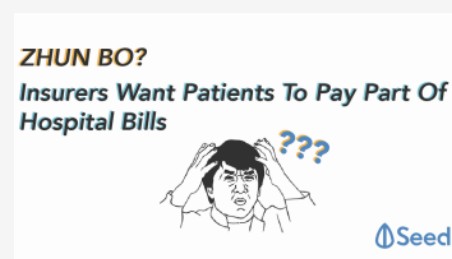
Related



The True Cost Of Healthcare In Singapore That Every Singaporean Should Be Aware Of
28 January 2019
In "Healthcare"



National Day Rally (NDR) 2018 in 5 Mins - All the Costs That Matters To Singaporeans
19 August 2018
In "On The Economy"



ZHUN BO? Insurers Want Patients To Pay Part Of Hospital Bills
7 March 2018
In "Health Insurance"

Comments

[Jewel Changi Airport Canopy Park Price List: Is It Worth Going To Jewel Again?](#)

[What Happens To Your CPF When You Pass Away?](#)

Leave a Reply

Your email address will not be published. Required fields are marked *

Comment

Name *

Email *

Website

Save my name, email, and website in this browser for the next time I comment.

Notify me of follow-up comments by email.

Notify me of new posts by email.

This site uses Akismet to reduce spam. [Learn how your comment data is processed.](#)

What's Trending?



[Singaporean's Guide To Cost Of Hospitalisation Treatment: Which Hospital Is The Cheapest?](#)



[Astrea V Bond: What Singaporeans Need To Know](#)



[Useful Telegram Channels That Every Singaporean Needs To Join](#)



[Food Delivery Promo Codes For Your Lazy Bum! \(June 2019\)](#)



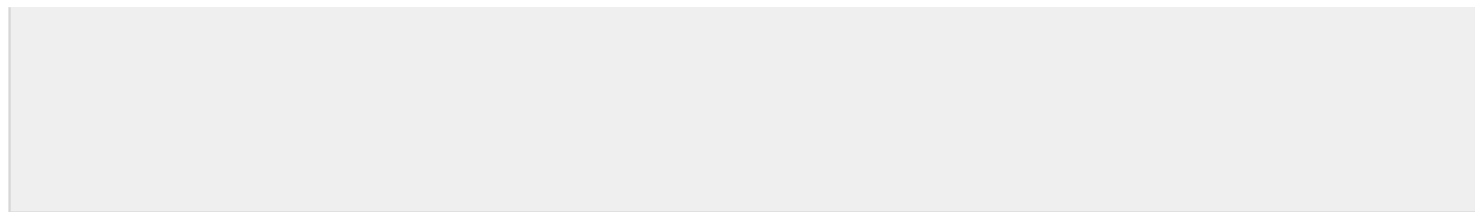
[Getting Married In A Year? You Need To Save \\$2300 A Month To Afford An "Average" Wedding](#)

Like us for more updates

 Like 13K people like this. [Sign Up](#) to see what your friends like.

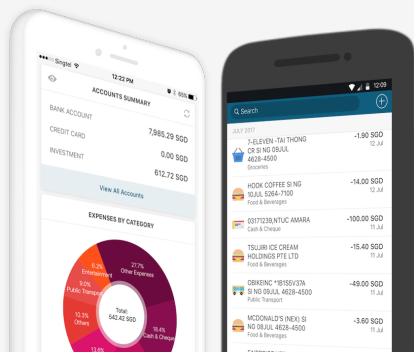
Subscribe to our newsletter

We promise to send useful content only! You can unsubscribe at any time.



Manage your money for free today!

[Download App](#)



Company

[About](#)

[Contact](#)

[Careers](#)

[Privacy](#)

[Terms](#)

Product Reviews

[Travel Insurance](#)

[Robo-advisors](#)

[P2P Lending](#)

[Savings Accounts](#)

[Online Brokerages](#)

[Travel Insurance](#)

[Mobile Plans](#)

[Credit Cards](#)

[Investment Courses](#)

[Electricity Market](#)

Quick Tools

[Savings Account Calculator](#)

Seedly App

[App Reviews](#)

[FAQ](#)

[Security](#)

Download the app

