

## **HISTORICAL MEMORIES**

**For SEPTEMBER 1900-1985**

**Provided for you by the  
Gothenburg Historical Museum.**

**For more information about the museum, go to  
[www.gothenburghistory.com](http://www.gothenburghistory.com)**

**Visit the Gothenburg Historical Museum located at  
1420 Avenue F. Open hours are  
Monday through Friday 10 a.m. to 4 p.m. and  
Saturday 10 a.m. to 2 p.m.**

1900 – Gothenburg has four things that towns in western Nebraska don't have – good streets, electric lights, a nice park and an excellent lake.

1900 – School opened with enrollment as follows: High School – 48; Grammar – 35; 1<sup>st</sup> Primary – 56, for a total of 139 students. The blackboards have received a new coat of paint.

1900 – W.M. Stebbins has put in one of those machines where you put in a penny and it blows up your wheel.

1940 – A new doorway was built at the First Presbyterian Church. The doors were replaced with shorter ones, each with three small panes of glass. Up above the doors a canopy was built extending out about two feet. Both the canopy and doors resulted in a big improvement.

1950 – The Gothenburg Harvest Festival changed its route this year. The parade will form at 16<sup>th</sup> and Lake, proceed south on Lake to 9<sup>th</sup> Street where it will turn and go four blocks to the Stickleman Sale Barn.

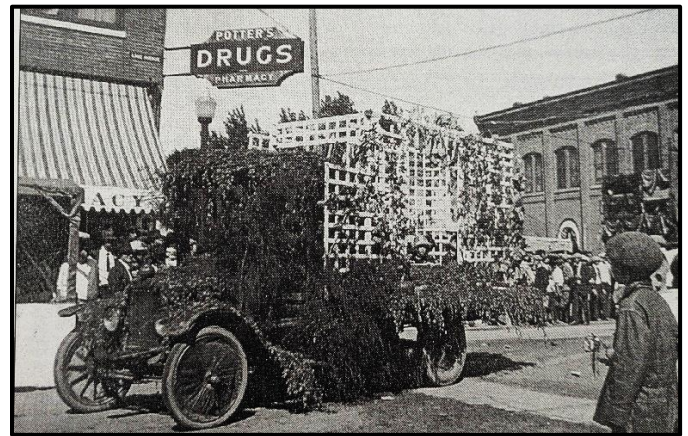
1950 – Peterson's Locker Plant, one of the finest and most modern plants of its kind in this part of the state will be sold at auction. The sale includes the locker plant, the café, 960 lockers, processing equipment, office equipment, power plant and a modern apartment all owned by Oscar and Blaine Peterson.

1985 – Greg & Kathi Viergutz announced they assumed full ownership of The Gothenburg Times newspaper purchasing it from Delores Viergutz.

1985 – Pat Zarek and Sue Jensen have been working on indexing all the area cemeteries and came upon information about the mass grave site located north of Lake Helen. These graves were moved from the Holcombe Cemetery due to the construction of Lake

Helen in 1890. Some of the graves were moved to the new Gothenburg cemetery; however, many families could not afford the cost of moving a grave. (For more information on area cemeteries and obituaries you can visit the Gothenburg Historical Museum.)

1985 – Nebraska enacted legislation (LB 496) that made the use of occupant protection systems (seat belts) by the driver and front-seat passengers mandatory when riding in vehicles 1973 model year and newer. Nebraska is the 6<sup>th</sup> state to begin enforcement of this law. It is predicted to cut motor vehicle fatalities and injuries by 50 percent.



“Fall Festival” has been a popular event starting in 1914 with the first annual colt show. This 1925 photo was taken at the corner of 9<sup>th</sup> and Lake. The truck, as part of the annual parade, was covered with a white trellis type frame and covered with what appears to be flowers and shrubs and possibly alfalfa and trees. Potter's Pharmacy and Gothenburg State Bank can be seen in the background.

