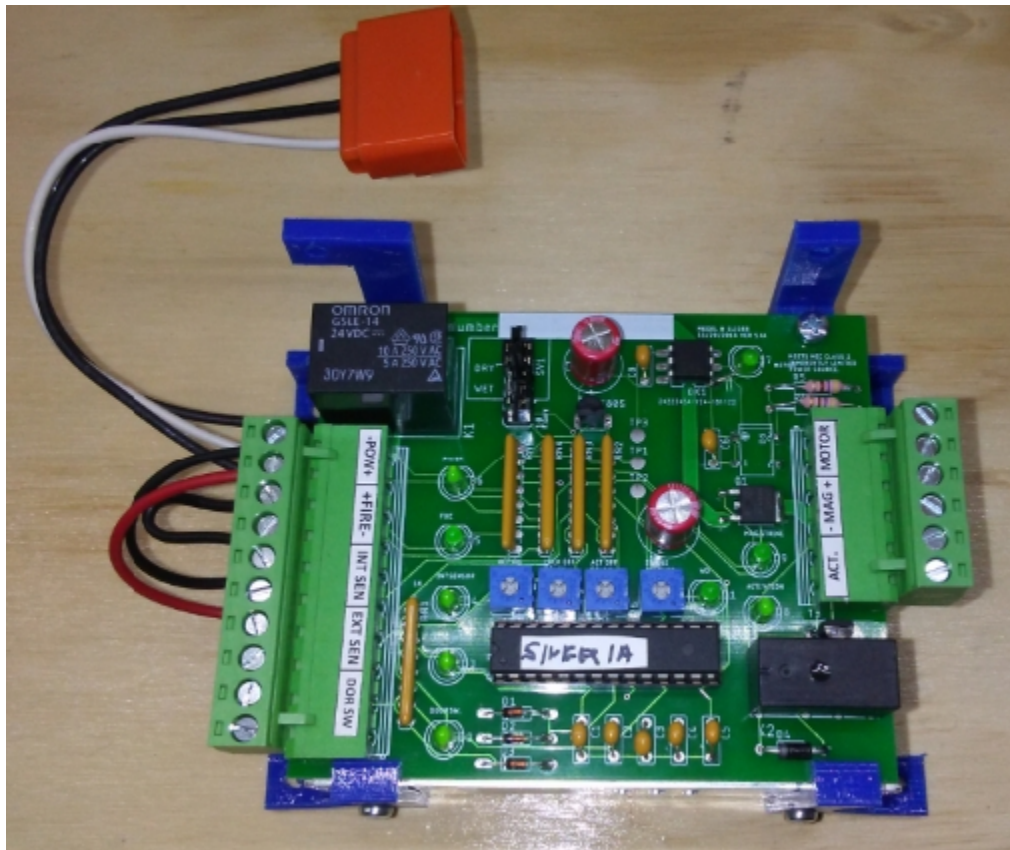


Slider

Setup Instructions



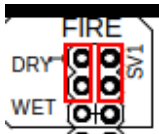
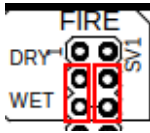
Overview:

Thank you for purchasing this from KRN Solutions LLC. This control is unique to what you may have used before, So I would recommend reading this setup instructions completely before going to any job site. The most current version and other supporting documents can be found at www.krnsolutionsllc.com.


This control is a microprocessor base control. This allows flexibility in functions for both current and future features. All adjustments can be made without a handheld/computer. It uses a 24 VDC regulated power supply. It can be used with sliding doors with 24VDC magnetic locks or strikes.

Inputs:

Each input has an LED to indicate input statuses. Control also has a power and watchdog (WD) LEDs. This WD LED will blink indicating the control has power and the program is running.

Label	Function
FIRE DRY INPUT	Fire System Setup: Dry, normally closed contact from fire system. Must set jumpers as shown. 
FIRE 24VDC INPUT	Fire System Setup: 24VDC from fire system. Note: When set for 24 VDC in, if polarity is wrong, control will work, but LED will not light. Must set jumpers as shown. 
T CLOCK Time Clock/Door Position Switch	Dry contact, that is to be normally open. When closed, removes/applies power to MAG/STRIKE output only. This will also enable the EXT. SENSOR input. When used with a door closed position, open contact when door is closed, delays the re-locking of the lock. Usage: Day/Night on a door is used for security.
INT. SENSOR Interior Sensor	Dry contact, that is to be normally open. When closed, removes/applies power to MAG/STRIKE , output and close ACTIVATION outputs. Usage: Card reader, inside push plate. Outside push plate, if it is to be active 24/7.
EXT. SENSOR Exterior Sensor	Dry contact, that is to be normally open. When closed, closes ACTIVATION output. <u>ONLY</u> if the T CLOCK input where activated first. Usage: Outside sensor that is to be disabled at night.
MOTOR	This input, takes the DC voltage from a motor to determined when the door is closed. Eliminates the need for a door closed position. Good for up to 90VDC motors.

Outputs: Each output has an LED to indicate output statuses.

Label	Function
+ MAG -	MAGNETIC LOCKS/STRIKE: Can be set for, fail safe or fail secure 24 VDC locks. See below for settings. Max 2 amp output.
ACT.	ACTIVATION : Dry contact, that is normally open. Activation for the automatic door control. Max 1 amp.
	Fail Safe/Fail Secure Setting. This selects the type of lock connected to the Mag/Strike output. Move the jumper to F. SAFE for fail safe locks.

Adjustments:

Label	Function
ACTIVATION ON DELAY	This is an on delay from magnetic lock unlocking to ACTIVATION output. This delay is adjustable from .25 to 2 seconds.
ACTIVATION OFF DELAY	This is an off delay for the ACTIVATION outputs. This delay is adjustable from .25 to 10 seconds. This is also the amount of time the EXT. SENSOR input is active.
LOCK OFF DELAY	This is the time the MAG/STRIKE output will hold active. It is a combination of both ACT. OFF DELAY and LOCK OFF DELAY settings. This delay is adjustable from .25 to 20 seconds.
STRIKE VOLTAGE	This sets the Mag/Strike output voltage after 5 seconds. This will reduce the heat produced by the strike. Leave fully clockwise for magnet locks.

Basic Troubleshooting:

Power shuts off	If the power supply shut down, check green power LED are light. Check that 115/220 switch is in the 115 position located on top of power supply. Check for shorts in wires and devices.
No input or output LEDs	Check the WD LED is blinking. If it is not, check Fire Alarm input. Then remove power for 60 seconds. On power up, wait 60 seconds, if it still is not blinking. Replace lock control.

Mounting

The plastic brackets, gives you two options to mount this control in a header or control box.

See attached sheets for class 2 wiring examples.

120 VAC Wiring:

1. For UL Installations, the power supply must be installed in the protected area within an Access Controlled room
2. Must be Installed within accordance with the National Electrical Code, ANSI/NFPA 70.
3. Must be Installed within accordance with Local authority having jurisdiction.
4. The AC input wiring shall
 - a. be in conduit,
 - b. be minimum No. 18 AWG wire,
 - c. maintain ¼ inch spacing between non power-limited wiring, and
 - d. be fail safe to meet the requirements of NFPA 101, Paragraph 7.2.1.6.

Grounding:

The ground wire from the power supply **MUST** be connected to chassis ground.

Performance Level Definitions for Access Control, per UL294 7th Edition.

Feature	Level
Destructive Attack	Level I, No attack test
Line Security	Level I, No line security
Endurance	Level III, 50,000 cycles
Standby Power	Level I, No secondary power source
Single Point locking Device with Key locks	Level I, No attack on key lock

LIMITED WARRANTY

KRN Solutions LLC ("Seller") warrants to the first purchaser of this product, for the installation in which this product is originally installed, that it will be free from any defect in materials and/or workmanship for a period of 12 full months from the date of purchase. The product must be used in complete accordance with included instructions for installation, operation and care. **The proper operation of this product is dependent on your compliance with the Owner's Manual instructions regarding installation, operation, maintenance and testing. Failure to comply strictly with those instructions will void this warranty in its entirety.**

If, during the limited warranty period, it appears as though this product contains a defect which is covered by this limited warranty, **CALL OUR number at 267-382-3900 or email krnsolutions.llc@gmail.com**. You will be advised of shipping instructions and address. Then send this product, prepaid and insured, to our service center for warranty repair. Please include a brief description of the problem and a dated proof-of-purchase receipt with any product that is returned for warranty repair.

Products returned to Seller for warranty repair, which upon receipt by Seller are confirmed to be defective and covered by this limited warranty, will be repaired or replaced (at Seller's sole option) at no cost to you and returned pre-paid. Defective parts will be repaired or replaced with new or factory-rebuilt parts at Seller's sole option.

THIS LIMITED WARRANTY IS IN LIEU OF ANY OTHER WARRANTIES, EXPRESS OR IMPLIED, INCLUDING ANY IMPLIED WARRANTY OF MERCHANTABILITY OR FITNESS FOR A PARTICULAR PURPOSE, OR OTHERWISE, AND OF ANY OTHER OBLIGATIONS OR LIABILITY ON SELLER'S PART. THIS LIMITED WARRANTY DOES NOT COVER NON-DEFECT DAMAGE, DAMAGE CAUSED BY IMPROPER INSTALLATION, OPERATION OR CARE (INCLUDING, BUT NOT LIMITED TO ABUSE, MISUSE, FAILURE TO PROVIDE REASONABLE AND NECESSARY MAINTENANCE, USE OF UNAUTHORIZED PARTS OR ACCESSORIES, UNAUTHORIZED REPAIRS, OR ANY ALTERATIONS TO THIS PRODUCT), LABOR CHARGES FOR DISMANTLING OR REINSTALLING. THE USE OF UNAUTHORIZED PARTS OR ACCESSORIES WILL VOID THIS LIMITED WARRANTY. If you have any questions as to whether accessories or replacement parts are authorized, please contact KRN Solutions LLC.

THIS LIMITED WARRANTY DOES NOT COVER ANY PROBLEMS WITH, OR, ANY SERVICE CALL THAT DETERMINES THE PROBLEM HAS BEEN CAUSED BY OTHER ITEMS THAT COULD RESULT IN A FEE TO YOU. UNDER NO CIRCUMSTANCES SHALL SELLER BE LIABLE FOR CONSEQUENTIAL, INCIDENTAL OR SPECIAL DAMAGES ARISING IN CONNECTION WITH THE USE OF, OR INABILITY TO USE, THIS PRODUCT. IN NO EVENT SHALL SELLER'S LIABILITY FOR BREACH OF WARRANTY, BREACH OF CONTRACT, NEGLIGENCE OR STRICT LIABILITY EXCEED THE COST OF THE PRODUCT COVERED HEREBY. NO PERSON IS AUTHORIZED TO ASSUME FOR US ANY OTHER LIABILITY IN CONNECTION WITH THE SALE OF THIS PRODUCT.

Some states do not allow the exclusion or limitation of consequential, incidental or special damages, so the above limitation or exclusion may not apply to you. This limited warranty gives you specific legal rights, and you may also have other rights which vary from state to state.

KRN Solutions LLC is not responsible for any typographical errors.