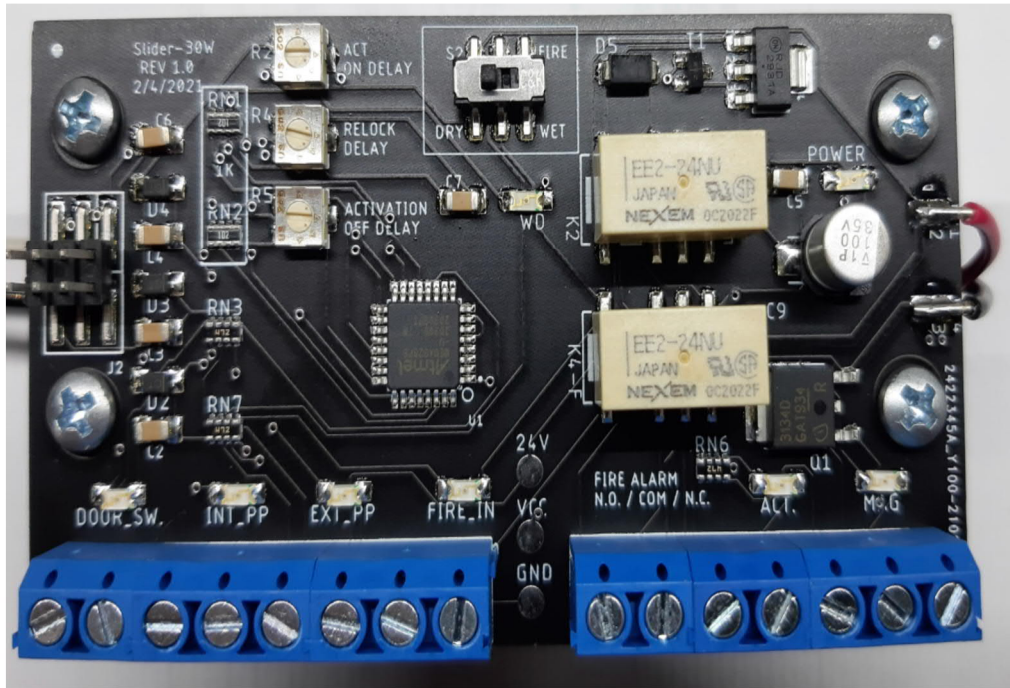


# Slider-30W

## Setup Instructions




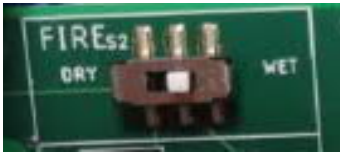
## Overview:

Thank you for purchasing this from KRN Solutions LLC. This control is unique to what you may have used before, So I would recommend reading this setup instructions completely before going to any job site. The most current version and other supporting documents can be found at [www.krnsolutionsllc.com](http://www.krnsolutionsllc.com).

This control is a microprocessor base control. This allows flexibility in functions for both current and future features. All adjustments can be made without a handheld/computer. It uses a 24 VDC regulated power supply. It can be used with sliding doors with 24VDC magnetic locks.

Inputs:

Each input has an LED to indicate input statuses. Control also has a power and watchdog (WD) LEDs. This WD LED will blink indicating the control has power and the program is running.

Label	Function
<b>FIRE</b>  DRY INPUT	<b>Fire System Setup:</b> Dry, normally closed contact from fire system. Set switch as shown. 
<b>FIRE</b>  24VDC INPUT	<b>Fire System Setup:</b> 24VDC from fire system. Note: When set for 24 VDC in, if polarity is wrong, control will work, but LED will not light. Set switch as shown. 
<b>T CLOCK</b>  Time Clock/Door Position Switch	Dry contact, that is to be normally closed when door is to be unlocked. Unlocks <b>MAG</b> only. This will also enable the <b>EXT. PP</b> input when closed. When used with a door closed position switch. Door closed switch is to be an <b>OPEN</b> contact when door is closed. <b>Usage:</b> Door Position Switch delays re-locking. Day/Night on a door is used for security. Day/unlocked = CLOSED. Night/locked = OPEN.
<b>INT. PP</b>  Push Plate/Interior Sensor	Dry contact, that is to be normally open. When closed, removes power to <b>MAG</b> output and close <b>ACTIVATION</b> outputs. <b>Usage:</b> Card reader, inside push plate. Outside push plate, if it is to be active 24/7.
<b>EXT. PP</b>  Push Plate/Exterior Sensor/Safety Beams	Dry contact, that is to be normally open. When closed, closes <b>ACTIVATION</b> output. <u>ONLY</u> if the <b>T CLOCK</b> input where activated first. <b>Usage:</b> Outside sensor and safety beams that are to be disabled when door is locked.

**Outputs:** Each output has an LED to indicate output statuses.

Label	Function
<b>+ MAG -</b>	<b>MAGNETIC LOCKS</b> 24 VDC locks. Max 2 amp output.
<b>ACT.</b>	<b>ACTIVATION</b> : Dry contact, that is normally open. Activation for the automatic door control. Max 1 amp.
<b>Fire System Output:</b>	This relay output is rated at 24VDC at 1 amps. Used to disable automatic door control(s).
<b>NO/Com/NC</b>	NO = Normally Open C= Common NC = Normally. Closed This is with the fire system in normal mode.

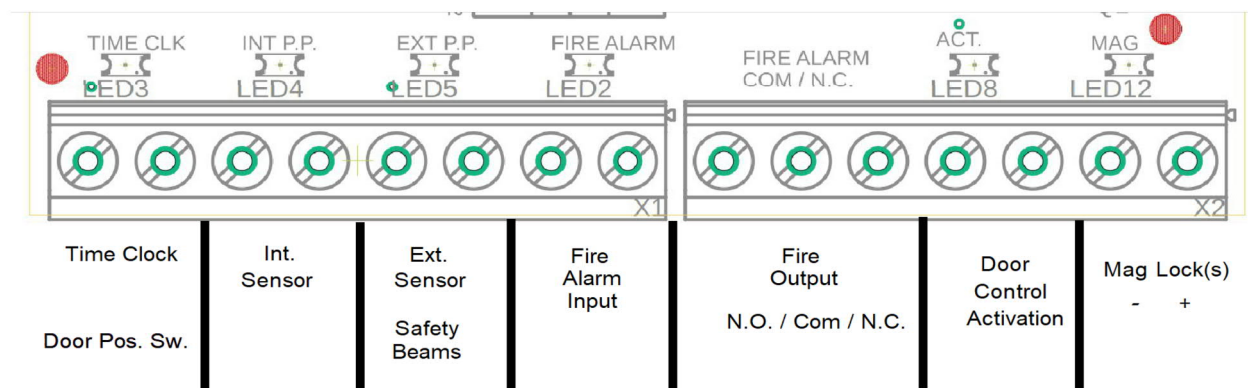
### Adjustments:

Label	Function
<b>ACTIVATION ON DELAY</b>	This is an on delay from magnetic lock unlocking to <b>ACTIVATION</b> output. This delay is adjustable from .25 to 2 seconds.
<b>ACTIVATION OFF DELAY</b>	This is an off delay for the <b>ACTIVATION</b> outputs. This delay is adjustable from .25 to 10 seconds.
<b>LOCK OFF DELAY</b>	This is the time the <b>MAG</b> output will hold active after the door comes closed. This delay is adjustable from .25 to 20 seconds.

### Basic Troubleshooting:

<b>Power shuts off</b>	If the power supply shut down, check green power LED are light. Check for shorts in wires and devices.
<b>No input or output LEDs</b>	Check the WD LED is blinking. If it is not, check <b>Fire</b> Alarm input. Then remove power for 60 seconds. On power up, wait 60 seconds, if it still is not blinking. Replace lock control.

### Wiring:



# LIMITED WARRANTY

KRN Solutions LLC ("Seller") warrants to the first purchaser of this product, for the installation in which this product is originally installed, that it will be free from any defect in materials and/or workmanship for a period of 12 full months from the date of purchase. The product must be used in complete accordance with included instructions for installation, operation and care. **The proper operation of this product is dependent on your compliance with the Owner's Manual instructions regarding installation, operation, maintenance and testing. Failure to comply strictly with those instructions will void this warranty in its entirety.**

If, during the limited warranty period, it appears as though this product contains a defect which is covered by this limited warranty, **CALL OUR number at 267-382-3900 or email [krnsolutions.llc@gmail.com](mailto:krnsolutions.llc@gmail.com)**. You will be advised of shipping instructions and address. Then send this product, prepaid and insured, to our service center for warranty repair. Please include a brief description of the problem and a dated proof-of-purchase receipt with any product that is returned for warranty repair.

Products returned to Seller for warranty repair, which upon receipt by Seller are confirmed to be defective and covered by this limited warranty, will be repaired or replaced (at Seller's sole option) at no cost to you and returned pre-paid. Defective parts will be repaired or replaced with new or factory-rebuilt parts at Seller's sole option.

**THIS LIMITED WARRANTY IS IN LIEU OF ANY OTHER WARRANTIES, EXPRESS OR IMPLIED, INCLUDING ANY IMPLIED WARRANTY OF MERCHANTABILITY OR FITNESS FOR A PARTICULAR PURPOSE, OR OTHERWISE, AND OF ANY OTHER OBLIGATIONS OR LIABILITY ON SELLER'S PART. THIS LIMITED WARRANTY DOES NOT COVER NON-DEFECT DAMAGE, DAMAGE CAUSED BY IMPROPER INSTALLATION, OPERATION OR CARE (INCLUDING, BUT NOT LIMITED TO ABUSE, MISUSE, FAILURE TO PROVIDE REASONABLE AND NECESSARY MAINTENANCE, USE OF UNAUTHORIZED PARTS OR ACCESSORIES, UNAUTHORIZED REPAIRS, OR ANY ALTERATIONS TO THIS PRODUCT), LABOR CHARGES FOR DISMANTLING OR REINSTALLING. THE USE OF UNAUTHORIZED PARTS OR ACCESSORIES WILL VOID THIS LIMITED WARRANTY. If you have any questions as to whether accessories or replacement parts are authorized, please contact KRN Solutions LLC.**

**THIS LIMITED WARRANTY DOES NOT COVER ANY PROBLEMS WITH, OR, ANY SERVICE CALL THAT DETERMINES THE PROBLEM HAS BEEN CAUSED BY OTHER ITEMS THAT COULD RESULT IN A FEE TO YOU. UNDER NO CIRCUMSTANCES SHALL SELLER BE LIABLE FOR CONSEQUENTIAL, INCIDENTAL OR SPECIAL DAMAGES ARISING IN CONNECTION WITH THE USE OF, OR INABILITY TO USE, THIS PRODUCT. IN NO EVENT SHALL SELLER'S LIABILITY FOR BREACH OF WARRANTY, BREACH OF CONTRACT, NEGLIGENCE OR STRICT LIABILITY EXCEED THE COST OF THE PRODUCT COVERED HEREBY. NO PERSON IS AUTHORIZED TO ASSUME FOR US ANY OTHER LIABILITY IN CONNECTION WITH THE SALE OF THIS PRODUCT.**

Some states do not allow the exclusion or limitation of consequential, incidental or special damages, so the above limitation or exclusion may not apply to you. This limited warranty gives you specific legal rights, and you may also have other rights which vary from state to state.

KRN Solutions LLC is not responsible for any typographical errors.