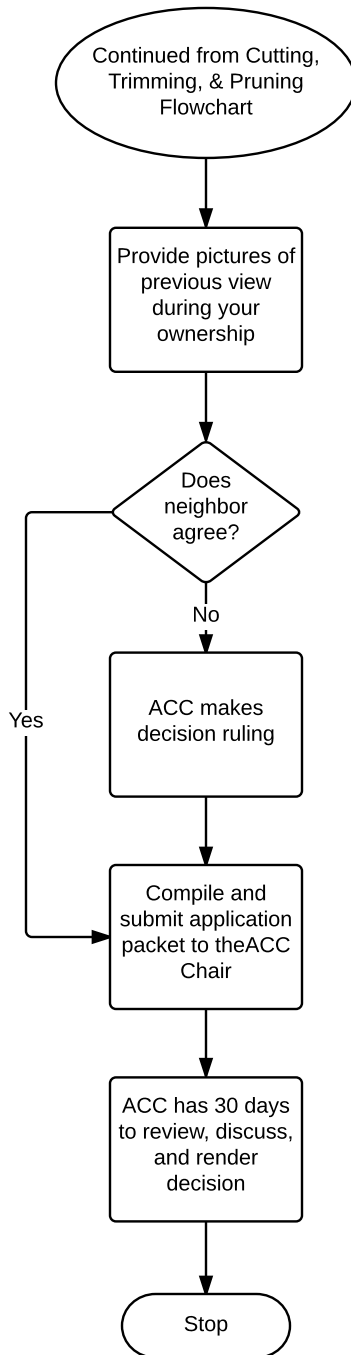


**FRAGARIA LANDING HOMEOWNERS ASSOCIATION
ACC APPLICATION PROCESS**

**CUTTING, TRIMMING, AND PRUNING TREES on OTHER PROPERTY
RELATED TO VIEW MAINTENANCE
(may include NATURAL VEGETATIVE BUFFER or 30' Setback)**



A PICTURE SAYS A THOUSAND WORDS
(And reduces chance of future conflict)

FLHA members are strongly encouraged to take photos of existing property views when taking ownership of a property. Keep these photos in your files for use in future landscape applications.

*Find it on the FLHA Website at
www.fragarialanding.org*

--FLHA Covenants
--ACC Reminders
--ACC Policies Clarifications
--ACC Application Cover Sheet
--ACC Application Form

Application Packet includes:

--Application Cover Sheet Checklist
--Plat map from Kitsap County dated within last 60 days
--Clearly show cutting/pruning area on Plat map
--ACC Application Form
--Other documents if relevant