

CPJSP

HELP ME TO HELP
MYSELF



TVET MOBILE



WHAT IS MOBILE TVET

An approach to set a workplace
Learning in community centers
To help trainees learn and earn



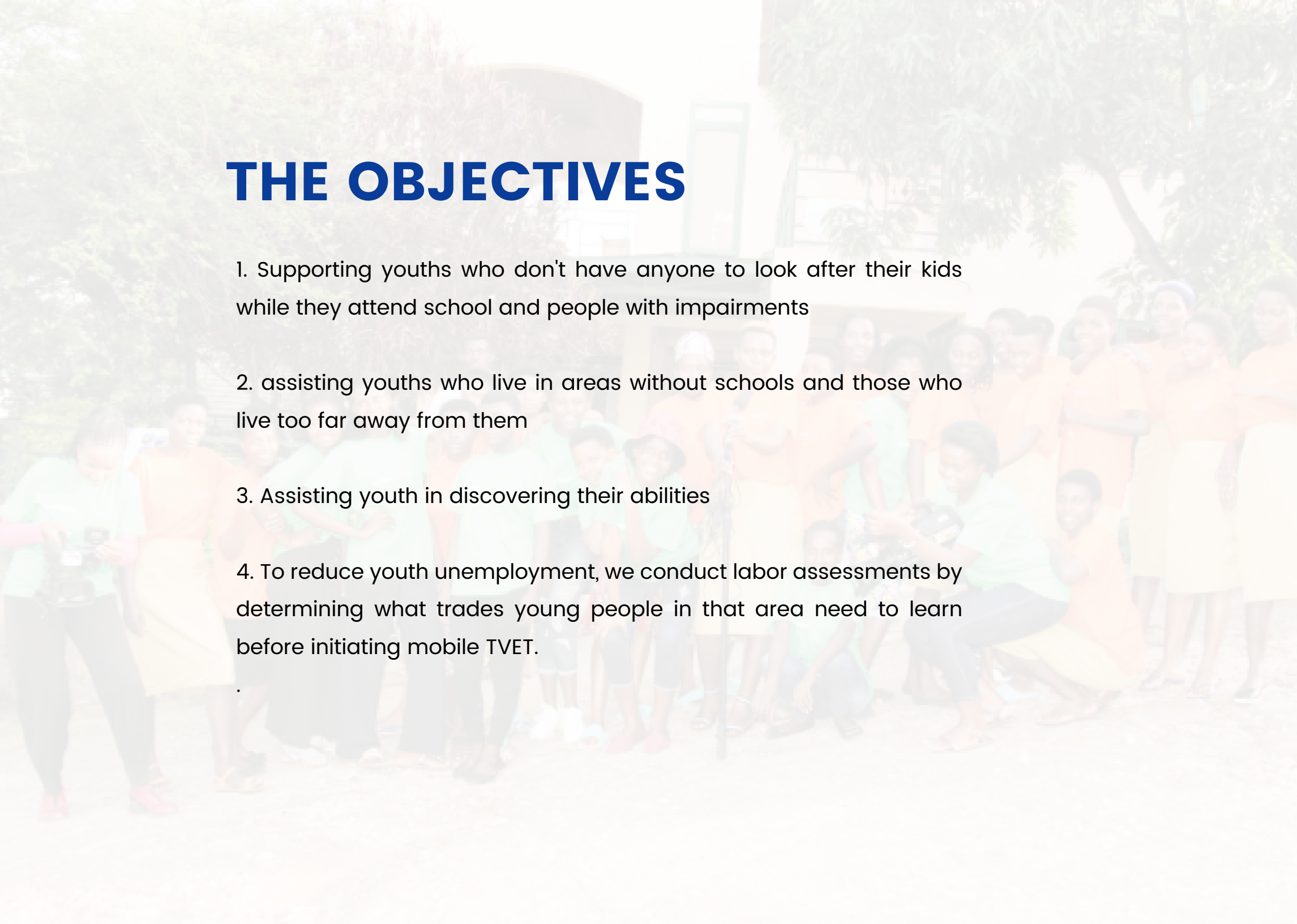
WHY MOBILE TVET ESTABLISHED

In response to the growing demand for TVET and employability skills among disadvantaged youth in marginalized, remote and outlying areas, CPJSP has been adopted an approach of TVET mobile where we take equipment, trainers and training consumables moves to the site where beneficiaries lives. The approach aim to improve employment opportunities to the youth by providing marketable / demand based formal and /or non-formal technical vocational skills training through workplace learning system.

Learn ipsum is simply

THE OBJECTIVES

1. Supporting youths who don't have anyone to look after their kids while they attend school and people with impairments
2. assisting youths who live in areas without schools and those who live too far away from them
3. Assisting youth in discovering their abilities
4. To reduce youth unemployment, we conduct labor assessments by determining what trades young people in that area need to learn before initiating mobile TVET.



HOW MOBLE TVET WORKS

Youth employment centers, which train youth, were established by CPJSP. Currently, RTB has accredited three youth empowerment centers: YEC Gasabo, YEC Karongi, and Kamo-nyi TVET School. By providing good trainers and mobile TVET materials, these YECs aid in the creation of mobile TVE.

Mobile TVET provide Soft skills and Technical Skills

Soft Skills we offer:

- * Work Ready Now / Be Your Own Boss
- * Value of life
- * Youth behavior change program (Campaign organizing for behavioral change and life skills Education programs like Value of Life, help youth in changing their behavior to prevent HIV/AIDS, improve reproductive health, and avoid unwanted pregnancies.
- * Environment protection

TRADE WE OFFER

We perform a labor assessment and determine the best trade before setting up mobile TVET. Our trade offers are certified by RTB, and we have memorandums of understanding with other accredited schools so they can assist us in obtaining certificates. We train in other trades as well because of what we observe in the market, such as painting, de-colation, and multimedia, which are not included in the RTB list.



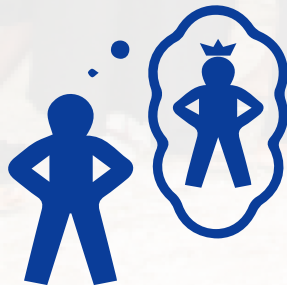
RESULT



WAGE EMPLOYMENT



SELF EMPLOYMENT



SELF ESTEEM

A group of approximately 20 people, mostly women, are posing for a group photograph outdoors. They are arranged in two rows, with some kneeling in the front. The group is wearing matching light green t-shirts and either orange or yellow skirts. In the background, there is a light-colored building with a prominent archway and a window. The scene is set in a well-lit, open area with trees and foliage visible. The overall atmosphere is professional and organized.

THANK YOU!