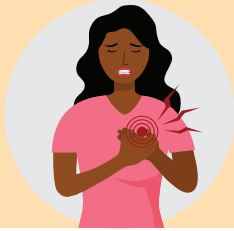


PEACH

Pregnant and Postpartum Heart Disease Warning Signs



Palpitations



Edema



Abnormal Breathing



Chest Pains



High Blood Pressure

Georgia cares about the heart health of pregnant and postpartum people. Look out for the **PEACH** heart warning signs that something might be seriously wrong.

Pregnancy can impact your heart health for up to a year after the pregnancy ends. Not all doctors will know that you were pregnant. Remember to say ***"I was pregnant this past year and now I am having..."***



Use this QR code to get more information about heart health warning signs.