



2 Test modified Safer Travels proposal

How to allow travel with minimal
community impact



A safer plan will stop
COVID-19 from
overwhelming the
community

For the sake of our families and school
aged children we can do better.

**Our children are the
future. They have no
lobby, no place at the
table, we cannot forget
them in our plan, so we
MUST be their voice.**

According to DOH metrics we must
have average daily positive cases of
less than 2/100k people to be in the
——“green” for in-person school.

WHY IS THIS NOT HAWAII'S GOAL?

Proposed “better” Safer Travels Plan

Pre-Travel Test

Continue 72 hr pre-travel test requirement.

- Register with Safe Travels program with QR code
- Get a DOH approved wristband to board airplane and participate in program.

Post-Arrival

Wear wrist band until 2nd test on day 4-6

- Download: “Aloha Safe” contact tracing app
- Visitor is on “modified quarantine”
- No entry to indoor public areas (curbside pickup and take out only)
- Enjoy outdoors as long as physically distanced and masked

2nd Test

After negative 2nd test wristband is removed by medical personnel

- No longer under any quarantine or restrictions
- Self monitor for symptoms and get tested if showing symptoms
- Keep Aloha Safe app (or equivalent) on phone for at least one week after returning home.

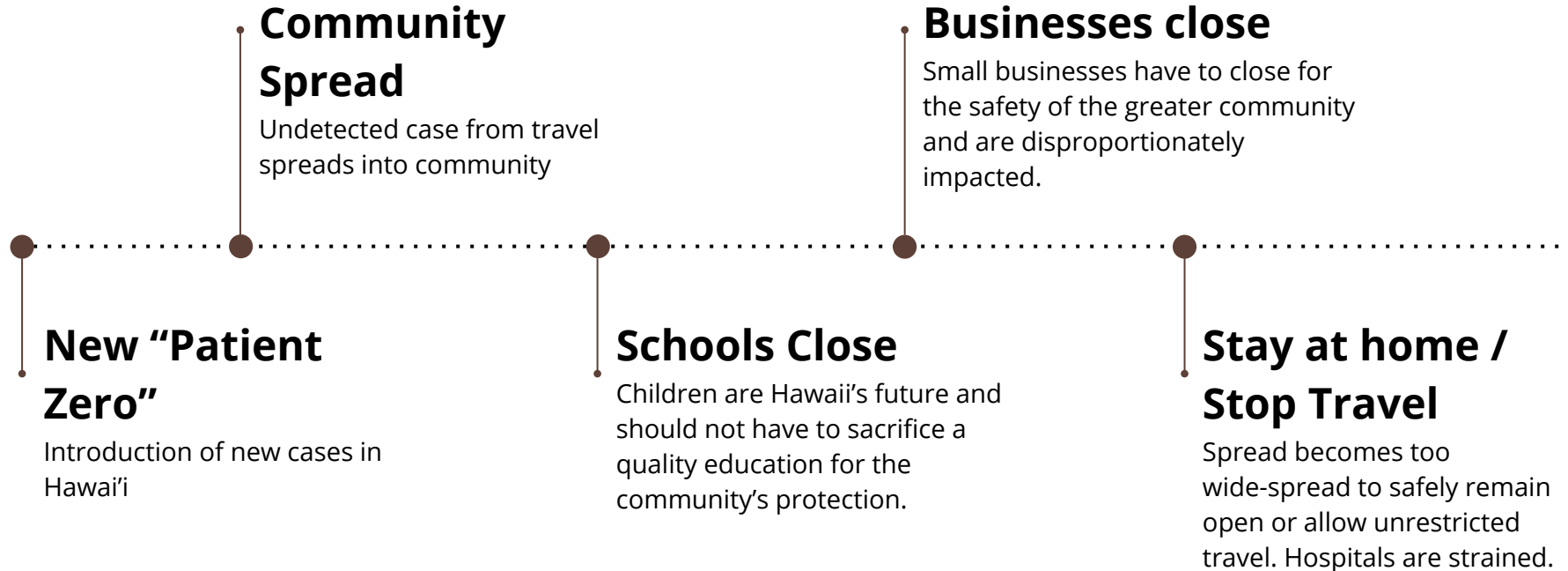
Benefit

- Allows travelers to enjoy the islands while not putting residents at significant risk.
- Travelers would be on a “modified quarantine” until 2nd test. During this quarantine period they may pickup to-go orders from restaurants and use outdoor areas in compliance with state and county mandates.
- After a negative second test healthcare worker will cut off wristband and the traveler would no longer be on quarantine.
- The number of infected travelers “slipping through the cracks” is greatly reduced.

*Removal of the wristband would break quarantine and emergency orders

**HTA/Resorts would be responsible for obtaining and administering tests for visitors

Why we need safer travels:



Three Step Safer Travel Plan

Fewer cases “slipping through the cracks” and becoming community spread

Currently at least 7 out of every 1000 travelers with a negative pre-test are actually positive. This would detect more of those unidentified cases.

