

Please Dial In to Hear the Call
973-348-3030 PIN: 101816



SparMiner

Bit Mining Made Easy



- ▶ SparMiner is a division on Spartech Solutions, LLC, a technology company. SparMiner is not an investment company and does not provide investment guidance, we are selling the technology and the storage for BitMining. As with any investment, it is your responsibility to make sure that you are doing your own independent research for this or any venture. Spartech cannot guarantee the future of BitCoin or the BitMining industry.

DISCLAIMER



- ▶ Bitcoin mining is the process by which transactions are verified and added to the public ledger, known as the block chain, and also the means through which new bitcoin are released. Anyone with access to the internet and suitable hardware can participate in mining. The mining process involves compiling recent transactions into blocks and trying to solve a computationally difficult puzzle. The miner is a server that helps complete the transaction and collects a fee for doing so.

WHAT IS BIT MINING?



- ▶ As a Bitcoin Miner, you are mining a percentage of a Bitcoin transaction, that is considered your fee for performing that service. This percentage is based on the price of Bitcoin, you are essentially waiting for the price of Bitcoin to raise or lower and your percentage increases and decreases in real time. Like anything, the market will fluctuate but the higher the price goes the higher the payout is.

WHAT DOES THAT MEAN?

- ▶ The ANTMINER S9 is the most efficient Miner on the market.
- ▶ The server helps create and complete the computational block chain and the mines a percentage for you.
- ▶ It depends on a secure and fast connection, the better the connection and the faster the speed the more mining it can do.
- ▶ This is where SparMiner helps you compete.



WHAT DOES THE MINING?

The Data Center

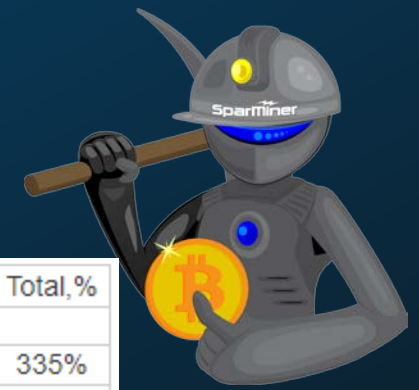
- ▶ State of the Art climate controlled, biometrically secured data center
- ▶ Redundant power, redundant internet and firewall protected
- ▶ Running Time 24/7/365 (99.99%)
- ▶ On-Site Technicians Inspecting Daily
- ▶ Fire Suppression
- ▶ Enhanced Physical Security

Ease of Maintenance

- ▶ Bit Miners are loud!
- ▶ They are hot!
- ▶ They consume a lot of power!
- ▶ You need BitCoin to buy them.
- ▶ Your home firewall can't protect them.
- ▶ SparMiner does the setup and programming of the server.
- ▶ Sparminer sets the AntMiner at the optimal running rate.
- ▶ We only use reputable vendors for the Bit Miners.



WHY SPARMINER?

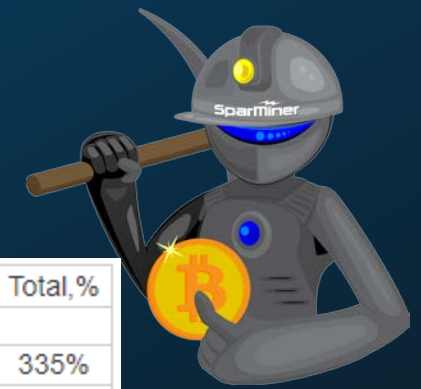


Month	Min-Max	Close	Mo,%	Total,%
2017				
Dec	9267-19879	9965	0.9%	0.9%
2018				
Jan	7785-9965	8371	-16.0%	-15.3%
Feb	8371-10390	9710	16.0%	-1.7%
Mar	9710-12052	11264	16.0%	14.0%
Apr	9696-11264	10426	-7.4%	5.5%
May	10426-12941	12094	16.0%	22.4%
Jun	12094-15011	14029	16.0%	42.0%
Jul	14029-16579	15494	10.4%	56.9%
Aug	15494-19231	17973	16.0%	81.9%
Sep	17973-22308	20849	16.0%	111%
Oct	17638-20849	18966	-9.0%	92.0%
Nov	18966-23541	22001	16.0%	123%
Dec	20453-23531	21992	-0.0%	123%

2019				
Jan	21992-27297	25511	16.0%	158%
Feb	24901-28649	26775	5.0%	171%
Mar	26775-33010	30850	15.2%	212%
Apr	30429-35009	32719	6.1%	231%
May	28111-32719	30227	-7.6%	206%
Jun	25986-30227	27942	-7.6%	183%
Jul	27942-34682	32413	16.0%	228%
Aug	32413-40231	37599	16.0%	281%
Sep	37539-43191	40365	7.4%	309%
Oct	35557-40909	38233	-5.3%	287%
Nov	38233-47455	44350	16.0%	349%
Dec	35140-44350	37785	-14.8%	283%

2020 Continuation				
Jan	37785-46019	43008	13.8%	335%
Feb	43008-53381	49889	16.0%	405%
Mar	49889-61922	57871	16.0%	486%
Apr	55006-63286	59146	2.2%	499%
May	46205-59146	49683	-16.0%	403%
Jun	49683-57529	53765	8.2%	444%
Jul	53765-66131	61805	15.0%	526%
Aug	55677-64059	59868	-3.1%	506%
Sep	53809-61909	57859	-3.4%	486%
Oct	51409-59149	55279	-4.5%	460%
Nov	55279-68613	64124	16.0%	549%
Dec	50094-64124	53864	-16.0%	445%

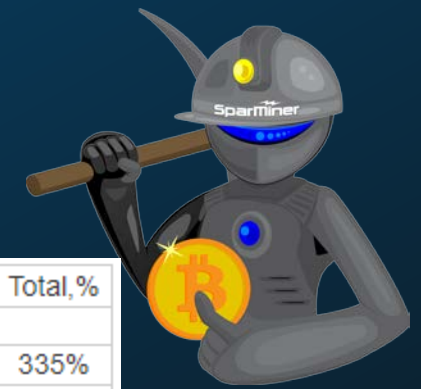
WHAT IS THE FUTURE OF BITCOIN?



Month	Min-Max	Close	Mo,%	Total,%
2017				
Dec	9267-19879	9965	0.9%	0.9%
2018				
Jan	7785-9965	8371	-16.0%	-15.3%
Feb	8371-10390	9710	16.0%	-1.7%
Mar	9710-12052	11264	16.0%	14.0%
Apr	9696-11264	10426	-7.4%	5.5%
May	10426-12941	12094	16.0%	22.4%
Jun	12094-15011	14029	16.0%	42.0%
Jul	14029-16579	15494	10.4%	56.9%
Aug	15494-19231	17973	16.0%	81.9%
Sep	17973-22308	20849	16.0%	111%
Oct	17638-20849	18966	-9.0%	92.0%
Nov	18966-23541	22001	16.0%	123%
Dec	20453-23531	21992	-0.0%	123%

Close	Mo,%	Total,%
2018		
008	13.8%	335%
889	16.0%	405%
871	16.0%	486%
146	2.2%	499%
683	-16.0%	403%
765	8.2%	444%
805	15.0%	526%
868	-3.1%	506%
859	-3.4%	486%
279	-4.5%	460%
124	16.0%	549%
864	-16.0%	445%

2018



Month	Min-Max	Close	Mo, %
2017			
Dec	9267-19879	9965	0.9%
2018			
Jan	7785-9965	8371	-16.0%
Feb	8371-10390	9710	16.0%
Mar	9710-12052	11264	16.0%
Apr	9696-11264	10426	-7.4%
May	10426-12941	12094	16.0%
Jun	12094-15011	14029	16.0%
Jul	14029-16579	15494	10.4%
Aug	15494-19231	17973	16.0%
Sep	17973-22308	20849	16.0%
Oct	17638-20849	18966	-9.0%
Nov	18966-23541	22001	16.0%
Dec	20453-23531	21992	-0.0%

2019				
Jan	21992-27297	25511	16.0%	158%
Feb	24901-28649	26775	5.0%	171%
Mar	26775-33010	30850	15.2%	212%
Apr	30429-35009	32719	6.1%	231%
May	28111-32719	30227	-7.6%	206%
Jun	25986-30227	27942	-7.6%	183%
Jul	27942-34682	32413	16.0%	228%
Aug	32413-40231	37599	16.0%	281%
Sep	37539-43191	40365	7.4%	309%
Oct	35557-40909	38233	-5.3%	287%
Nov	38233-47455	44350	16.0%	349%
Dec	35140-44350	37785	-14.8%	283%

e	Mo, %	Total, %
ion		
8	13.8%	335%
9	16.0%	405%
1	16.0%	486%
6	2.2%	499%
3	-16.0%	403%
5	8.2%	444%
5	15.0%	526%
8	-3.1%	506%
9	-3.4%	486%
9	-4.5%	460%
4	16.0%	549%
4	-16.0%	445%

2019



Month	Min-Max	Close	Mo, %
2017			
Dec	9267-19879	9965	0.9%
2018			
Jan	7785-9965	8371	-16.0%
Feb	8371-10390	9710	16.0%
Mar	9710-12052	11264	16.0%
Apr	9696-11264	10426	-7.4%
May	10426-12941	12094	16.0%
Jun	12094-15011	14029	16.0%
Jul	14029-16579	15494	10.4%
Aug	15494-19231	17973	16.0%
Sep	17973-22308	20849	16.0%
Oct	17638-20849	18966	-9.0%
Nov	18966-23541	22001	16.0%
Dec	20453-23531	21992	-0.0%

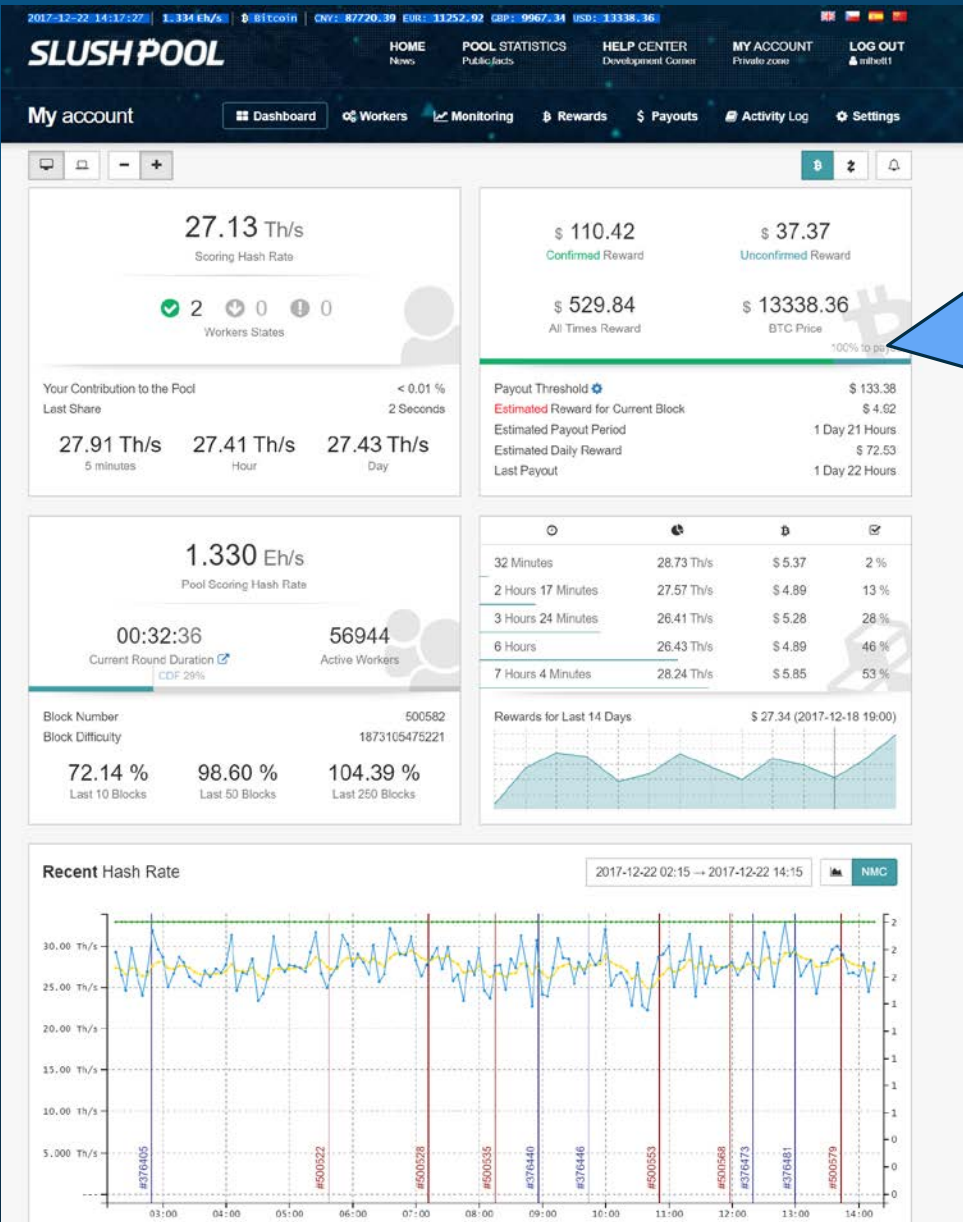
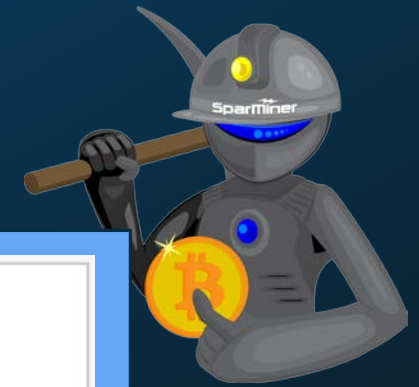
Month	Min-Max	Close	Mo, %	Total, %
2020 Continuation				
Jan	37785-46019	43008	13.8%	335%
Feb	43008-53381	49889	16.0%	405%
Mar	49889-61922	57871	16.0%	486%
Apr	55006-63286	59146	2.2%	499%
May	46205-59146	49683	-16.0%	403%
Jun	49683-57529	53765	8.2%	444%
Jul	53765-66131	61805	15.0%	526%
Aug	55677-64059	59868	-3.1%	506%
Sep	53809-61909	57859	-3.4%	486%
Oct	51409-59149	55279	-4.5%	460%
Nov	55279-68613	64124	16.0%	549%
Dec	50094-64124	53864	-16.0%	445%

2020

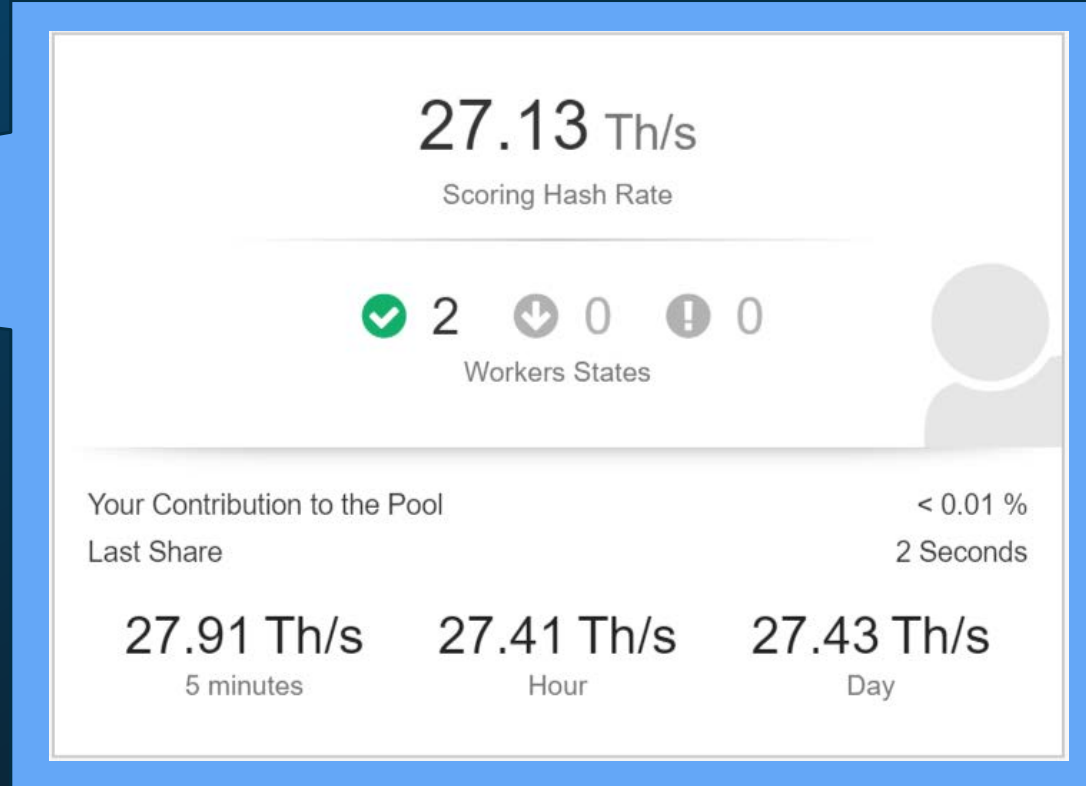
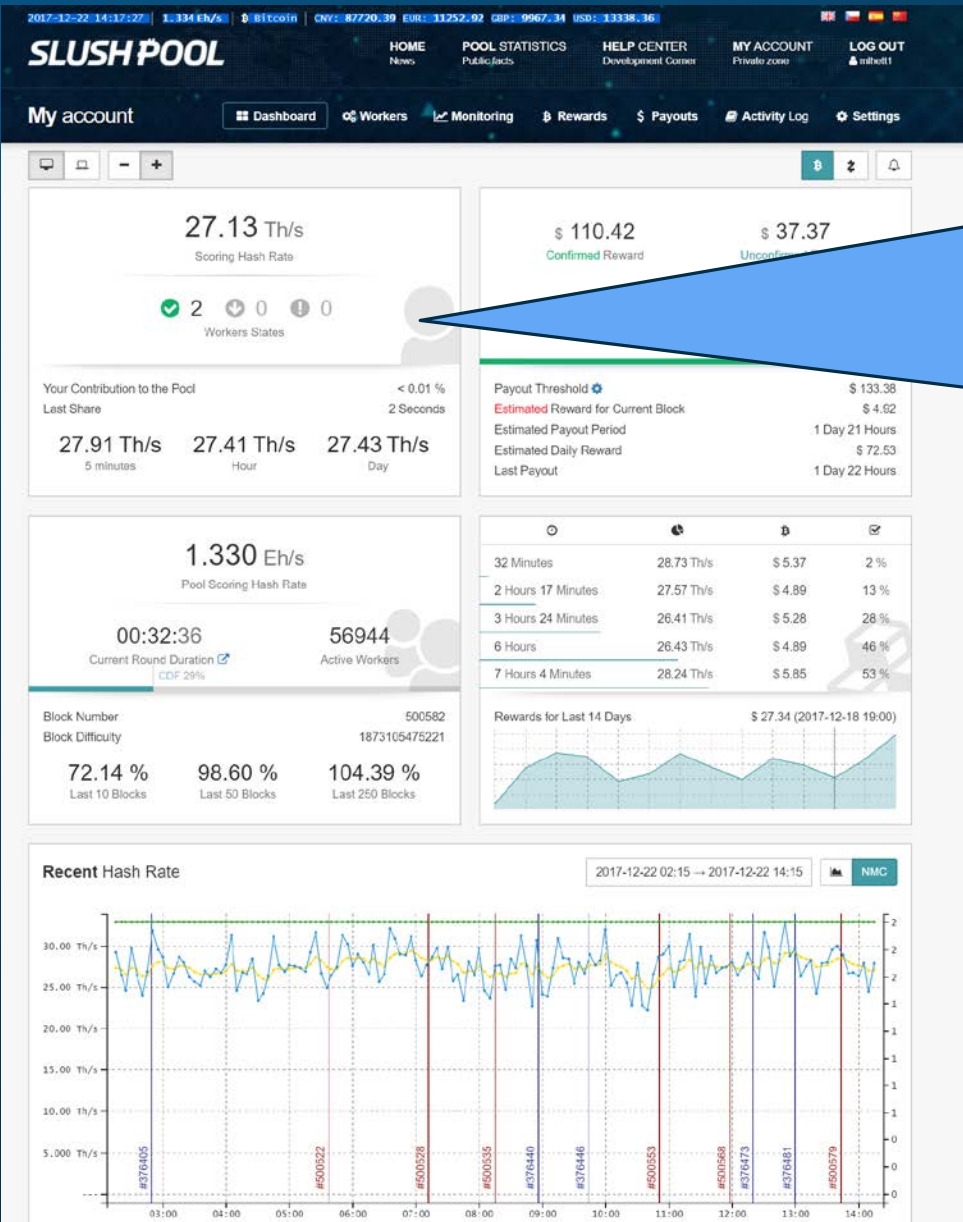


- ▶ Currently the most efficient miner on the market
- ▶ 13.5 TH/s in mining capability
- ▶ 1 Miner mines 1% of the price of Bitcoin every 3 days
- ▶ A second miner will increase to 27 TH/s and is currently mining 1% every 1.75 days
- ▶ The more miners you add the more efficiently you operate
- ▶ The most efficient power consumption

THE ANT MINER S9



THE SLUSH ACCOUNT AND COINBASE

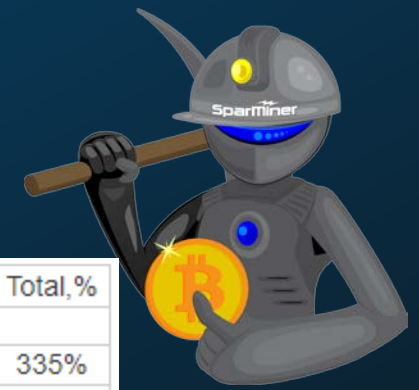


THE SLUSH ACCOUNT AND COINBASE



SparMiner Performance	
Current BitCoin Price	\$ 14,942.03
Current Pay Rate	1%
Pay Threshold	\$ 149.42
Pay Rate	1 Day and 21 Hours
Daily Payout Rate	\$ 81.24
Avg Days in the Month	30
Monthly Payout	\$ 2,437.19

2018 PROJECTED VALUE



Month	Min-Max	Close	Mo,%	Total,%
2017				
Dec	9267-19879	9965	0.9%	0.9%
2018				
Jan	7785-9965	8371	-16.0%	-15.3%
Feb	8371-10390	9710	16.0%	-1.7%
Mar	9710-12052	11264	16.0%	14.0%
Apr	9696-11264	10426	-7.4%	5.5%
May	10426-12941	12094	16.0%	22.4%
Jun	12094-15011	14029	16.0%	42.0%
Jul	14029-16579	15494	10.4%	56.9%
Aug	15494-19231	17973	16.0%	81.9%
Sep	17973-22308	20849	16.0%	111%
Oct	17638-20849	18966	-9.0%	92.0%
Nov	18966-23541	22001	16.0%	123%
Dec	20453-23531	21992	-0.0%	123%

2019				
Jan	21992-27297	25511	16.0%	158%
Feb	24901-28649	26775	5.0%	171%
Mar	26775-33010	30850	15.2%	212%
Apr	30429-35009	32719	6.1%	231%
May	28111-32719	30227	-7.6%	206%
Jun	25986-30227	27942	-7.6%	183%
Jul	27942-34682	32413	16.0%	228%
Aug	32413-40231	37599	16.0%	281%
Sep	37539-43191	40365	7.4%	309%
Oct	35557-40909	38233	-5.3%	287%
Nov	38233-47455	44350	16.0%	349%
Dec	35140-44350	37785	-14.8%	283%

2020 Continuation				
Jan	37785-46019	43008	13.8%	335%
Feb	43008-53381	49889	16.0%	405%
Mar	49889-61922	57871	16.0%	486%
Apr	55006-63286	59146	2.2%	499%
May	46205-59146	49683	-16.0%	403%
Jun	49683-57529	53765	8.2%	444%
Jul	53765-66131	61805	15.0%	526%
Aug	55677-64059	59868	-3.1%	506%
Sep	53809-61909	57859	-3.4%	486%
Oct	51409-59149	55279	-4.5%	460%
Nov	55279-68613	64124	16.0%	549%
Dec	50094-64124	53864	-16.0%	445%

WHAT IS THE FUTURE OF BITCOIN?



- ▶ The next round of Bit Miners open for purchase is Mid-February
- ▶ The current cost of the Ant Miner S9 is \$7,000.00 US
- ▶ We can't guarantee that the price won't increase, but we will guarantee the 7k for this round.
- ▶ We have access to pre-order AntMiners for the next round and will honor everyone on a first come first serve basis.
- ▶ To do so we have to convert money to Bitcoin
- ▶ With your paid pre-order you will secure your AntMiner S9 for the February release.
- ▶ You do not pay any hosting fees until your AntMiner S9 is successfully installed and running.

WHATS NEXT?



- ▶ Go to www.sparminer.com
- ▶ Click on the “contact” link
- ▶ Give your Name, Email, Message, Number of Miners and most importantly who referred you
- ▶ You will receive a contract via DocuSign, included in that agreement is a link to pay for the miner
- ▶ You can pay via Credit Card or ACH
- ▶ As the contracts are received you are placed in line a secured your position for the next round.
- ▶ You will receive updates on the arrival of the miners as well as instructions for you Slushpool and Coinbase accounts.

HOW DO YOU GET STARTED?



QUESTIONS?





- ▶ Q: What is the warranty on the Ant Miner S9?
 - ▶ A: 90 Days
- ▶ Q: If a fan blade or a power supply goes bad will Spartech fix the machine as a part of the service/storage agreement?
 - ▶ As long as you are a customer we will make standard replacements on the Ant Miner S9.
- ▶ Q: When a new and better machine comes out, am I required to replace the current machine?
 - ▶ No, you can run your machine as long as you want. If you want to buy a new model it would run concurrently with the S9 increasing your overall TerraHash output.



Q&A



- ▶ Q: How secure are these machines from a cyber attack?
 - ▶ Although nothing is 100% hack proof, the nature of the machines and the way it computes the block chain makes it difficult to expose. These machines sit behind Spartech's Enterprise firewall in our data center.
- ▶ Q: How secure is the Coinbase and Slushpool accounts used for the mining process?
 - ▶ Both Coinbase and Slushpool are two of the larger more reputable vendors for Bit Mining and are web based programs. They have better control over their security and access to their systems.

Q&A