

State Board



Bootcamp

Table of Contents

- Theory Testing Information.....page 3
- PSI Important Information and Rules.....page 4
- PSI Testing Center Location.....page 5
- Theory Test Outline.....page 6
- PSI Practical Important Guidelines.....page 7
- PSI Workplace Infection and Safety Info.....page 8
- Draping.....pages 9-13
- Topic Area 1: Workstation Preparation.....pages 14-15
- Topic Area 2: Haircutting..... pages 16-17
- Topic Area 3: Straight Razor Shaving.....pages 18-24
- Topic Area 4: Chemical Wave (Perm).....pages 25-31
- Topic Area 5: Foil Color.....pages 32-36
- Topic Area 6: Hydroxide Relaxer (Virgin).....pages 37-41
- Topic Area 7: Color Retouch.....pages 42-44
- Topic Area 8: Facial.....pages 45-54
- Topic Area 9: Manicure.....pages 55-61
- Topic Area: End of Clean-up.....page 61

THEORY TESTING INFORMATION

MASTER BARBER THEORY AND LAW TESTS

The theory and law tests are administered using a computer, a mouse and computer keyboard.

IDENTIFICATION SCREEN

Test takers will be accompanied to a testing station. Once test takers are seated at their testing station, they will be prompted to confirm their name, identification number, and the test for which they registered.

TUTORIAL

Before a test taker begins a test, an introductory tutorial is provided on the computer screen. The time used to watch the tutorial is not deducted from any test timing. The tutorial takes up to 15 minutes, sample questions are introduced during tutorial so a test taker may familiarize themselves on how questions are written and how to review the answers given.

TEST QUESTION SCREEN

The "function bar" at the top of the test question, provides mouse-click access to any features available while taking the test. During the test, one question will appear on the screen at a time. There is also a timer feature that at the top of the screen that displays the time a test taker has remaining to complete the test.

Note:

Once a test taker has entered a response to a question, the system will allow the response to be changed anytime the test is active. Once a test taker signs out of a test or timing expires; this feature will no longer be available.

EXPERIMENTAL QUESTIONS

In addition to the number of test questions specified in the "Test Content Outline". There are a small number of "experimental questions" may be administered to test takers during the tests. There are typically at least five (5) experimental questions on a test. The results of these questions not included in the final test takers score. Administration of such unscored experimental questions is an essential step in developing future PSI tests.

MASTER BARBER THEORY TEST

The test content outline is prepared and is periodically updated by committees of professionals who are subject matter experts in Barbering, Barber instruction, or regulatory issues. The test content outline identifies areas of importance to licensees for them to perform their duties on the public in a competent and in a safe and responsible manner.

The content outline lists topics that are on the test and the number of questions for each topic. We advise test takers not schedule a test until they are familiar with the topics on the outline. Test takers may use this outline as a guide as well as the test references as a guide for a pre-test review.

Test takers must score at least 70 percent to pass the test.

To better prepare for the PSI National Master Barber Theory test, test takers can now review by taking an online practice test. Practice tests are intended to aid test takers with example test questions. The purpose is to familiarize a test taker with the general types of questions that will appear on a Master Barber test. Though questions are based on Barbering, these questions are NOT a substitute for education and study. Scoring well on the practice test also will not guarantee a positive outcome on the actual licensing test. This is the ONLY official PSI practice test; PSI does not recognize nor endorse any other study guides that may be offering information on the PSI National Cosmetology and Barber Program. The PSI practice tests are offered to review an unlimited number of times; however, a fee is assessed for each time the test is utilized for review.

Go to <https://www.psionlinestore.com> for more information and to register!

PSI IMPORTANT INFORMATION AND RULES

REQUIRED IDENTIFICATION FOR ENTRY TO THE TEST

Test takers are required to provide 2 forms of identification.

- One I.D. must be a VALID, government issued identification (driver's license, state ID, passport), which bears the test takers name exactly as it appears in the test registration, signature and photograph or a complete physical description.
- The second ID must have the test takers signature and preprinted legal name exactly as it appears on the test takers registration form.
Again, all identification must display the test takers name exactly as it appears in the test registration form.

Test takers who are not able to provide the required identification must call (855) 340-3710 at least 21 days prior to the scheduled test, to discuss possible solutions to this test requirement.

Test takers failing to provide all required identification at the time of the test is considered a missed test, and they will be dismissed.

GENERAL SECURITY RULES AND PROCEDURES

The following security procedures will apply during the test:

- Test takers may take only approved items into the testing room.
 - All personal belongings of test taker should be placed in the secure storage provided at each site prior to entering the testing room. Personal belongings include, but are not limited to, the following items:
 - **Electronic devices of any type, including but not limited to; cellular/mobile phones, recording devices, watches, cameras, pagers, laptop computers, tablet computers (e.g., iPads), music players or headphones (e.g., iPods), smart watches, radios, or electronic games.**
 - **Bulky or loose clothing or coats:** For security purposes outerwear such as, but not limited to open sweaters, cardigans, shawls, scarves, hoodies, vests, jackets, and coats are not permitted in the testing room. **In the event test takers are asked to remove the outerwear, appropriate attire such as a shirt should be worn underneath.**
 - **Hats or headgear not worn for religious reasons** or as religious apparel are prohibited including but not limited to hats, baseball caps, or visors.
 - **Other personal miscellaneous items**, including purses, notebooks, reference or reading material, briefcases, backpacks, wallets, pens, pencils, other writing devices, food, drinks, and good luck items, etc.
 - Although secure storage for personal items is provided at the testing site for convenience, PSI is not responsible for any damage, loss, or theft of any personal belongings or prohibited items brought to, stored at, or left behind at the test site. PSI assumes no duty of care with respect to such items and makes no representation that the secure storage provided will be effective in protecting such items. If prohibited items are found during check-in, test takers will place them in the provided secure storage or leave these items outside the restricted area at their own risk. PSI is not responsible for the security of any personal belongings or prohibited items. Any test taker possessing prohibited items in the testing room shall immediately have their test results invalidated, and PSI shall notify the government officials in the state in detail of the occurrence.
 - If a test taker leaves any items at the test site after testing and is not claimed within 30 days, items will be disposed of or donated, at PSI's sole discretion.
 - Person(s) accompanying a test taker may not wait in the testing center, inside the building or on the building's property. This applies to guests of any nature, including drivers, children, friends, family, colleagues, or instructors.
 - No smoking, vaping, eating, or drinking is allowed inside the testing center.
 - During the check in process, all test takers will be asked if they possess any prohibited items. Test takers may also be asked to empty their pockets and turn them out for the proctor to ensure they are empty. Proctors will ask to inspect any such items in their pockets. Test takers may also be asked to lift the ends of their sleeves and the bottoms of their pant legs to ensure that restricted items do not enter testing areas.
 - Proctors also carefully inspect eyeglass frames, tie tacks, or any other apparel that could be used to harbor a restricted device.
 - Any test takers seen giving or receiving assistance on a test, found with unauthorized materials or devices, disrupts the administration of a test or who violates any security rule or procedure, will be asked to surrender all test materials and to leave the testing center. PSI will notify government officials in the state in detail of the occurrence.
 - Copying or communicating test content is violation of the test takers contract with PSI, and federal and state law. Either may result in the disqualification of test results and may lead to legal action.
 - Once the test begins, test takers may obtain permission from a proctor to leave the testing room if an emergency arises or to use the restroom. Test takers will not receive extra time to complete the test for leaving the testing room for any reason.
-

PSI TESTING CENTER LOCATIONS

PSI Memphis

Apple Tree Center
6099 Mt. Moriah Extended, Suite 26
Memphis, TN 38115

PSI Nashville

Corporate Park, Bldg. B
444 Metroplex Dr., Suite B100
Nashville, TN 37211

PSI Knoxville

9050 Executive Park Dr., Suite 206B
Knoxville, TN 37923

THEORY TEST OUTLINE

- I. **Safety and Infection Control (29%)**
 - a. Workstation and environment
 - 1. Chemical labeling, storage, and disposal
 - 2. OSHA Safety Data Sheet (SDS)
 - b. Safe working practices
 - 1. Hand Hygiene
 - 2. Client protection
 - c. Regulatory agencies
 - d. Infection control
 - 1. Infectious diseases and pathogens
 - 2. Cleaning and disinfection
 - a. Single vs. multiuse items
 - b. Disinfectants
 - c. Procedures for cleaning tools, equipment, and work surfaces
 - d. Storage of tools and equipment
 - e. Standard Precautions for exposure incidents
 - f. Effective safety responses for client injury
- II. **Client Consultation (2%)**
 - a. Client intake form
 - b. Client release form
 - c. Contraindications
- III. **Hair, Scalp, and Skin Analysis (11%)**
 - a. Hair and scalp structure, type, conditions, and disorders
 - b. Skin structure, type, conditions, and disorders
- IV. **Hairstyling (5%)**
 - a. Blow-dry and thermal irons
 - 1. Heat precautions
 - 2. Tool safety
 - 3. Styling
- V. **Haircutting (9%)**
 - a. Tool Safety
 - 1. Razors
 - 2. Scissors and Shears
 - 3. Trimmers and Edgers
 - 4. Clippers
- VI. **Chemical Services (18%)**
 - a. Products and product chemistry
 - 1. Hair coloring and lightening
 - 2. Permanent waving
 - 3. Chemical relaxing
 - b. Hair and scalp preparation
 - c. Safety precautions
 - 1. Metallic and compound dyes
 - 2. Minerals
 - d. Application procedures
 - 1. Hair color and lightening
 - 2. Permanent waving
 - 3. Chemical relaxing
- VII. **Shaving (24%)**
 - a. Preparation
 - b. Post-shave
 - c. Pre-softening the beard with steam towels
 - d. Shaving strokes
 - 1. Freehand
 - 2. Backhand
 - 3. Reverse Freehand
 - 4. Reverse Backhand
- VIII. **Skin Care (2%)**
 - a. Products and product chemistry

PSI PRACTICAL IMPORTANT GUIDELINES

For practical test questions or concerns, we recommend test takers and instructors to email barber@psionline.com.

Test takers should familiarize themselves with the following instructions to be properly prepared for the test, prior to registration.

- During the practical test, test takers must follow all appropriate rules for client protection that will ensure the health, safety, and welfare of the public.
- A proctor will be monitoring time during the test. Personal timers are not allowed in the testing room. Test takers will not receive a score for any activities not completed within the allotted topic area time limits. When the proctor gives an instruction to "Please stop working", test takers are to immediately stop what they are doing, stand quietly, and wait for the next instruction to be given.
- Test takers are required to prepare and bring a closable container ("supply kit"), with all products, supplies, and equipment necessary to perform the topic areas included in this test. The container dimensions should not exceed 24"x24"x24" in size.
- Test takers are required to bring to the test, two containers to dispose of used items. One marked "Single-use" and one marked "multi-use". All items used in the test are categorically disposed of in one of these containers.
- Products that are *not* grouped as "dangerous chemicals" by OSHA and are required to be listed on an actual business SDS sheet, may be fictitious with a self-created or actual label attached. Some other substance may be used inside the container to simulate a product.
- Chemical products that are required be listed on SDS sheets in an actual business, are required to be used from the original container with an original manufacturers label attached or in a container with the manufacturers label attached.
- Test takers may not observe other test takers during the test. PSI views and responds to this behavior as form of cheating. The test taker will be warned up to and including dismissal from the test. Please focus on individual tasks and do not depend on viewing the performance of other test takers to be successful.
- Test takers' name and/or school names are to be covered on their person and supplies while in the test.

The number one safety rule in our industry is: "Following Instructions". There is no necessary or required style or technique a school needs to teach, or a test taker needs to perform. All topic areas are observed in the manner a Master Barber would normally complete a task. Tasks should be taken seriously and performed as instructed in the test and to the highest skill level they are capable. Scores are based on the test taker displaying a solid knowledge of workplace Infection Control and Safety Precautions.

PSI WORKPLACE INFECTION & SAFETY INFO

WORKPLACE INFECTION CONTROL PRECAUTIONS

Test takers need to be familiar and follow all workplace infection control precautions. Here are some examples of the expectations of the test as well as an everyday business to familiarize a test taker with some of the industries infection control standards.

- ✓ Cleaning hands before starting a service. Knowing when hands become contaminated and keeping them clean as to not infect a client.
- ✓ Keeping the supply kit from becoming contaminated, such as: returning items to the kit, leaving a kit open or otherwise contaminating a kit. The supply kit represents a clean and disinfected storage in a cosmetologist's workstation and should be treated as such.
- ✓ Knowledge of single-use and multi-use items and how to dispose of them properly.
- ✓ Disinfecting workstation surfaces and keeping them from becoming contaminated. If a worksurface becomes unhealthy a test taker has the knowledge to know when they would require the station to be cleaned and disinfected.
- ✓ Knowing how to use and dispense products without contamination. For example, double dipping, or any other cross contamination with the skin or worksurfaces.
- ✓ Keeping clients from becoming contaminated by a Barber.
- ✓ Keeping containers being used from contamination.
- ✓ Making sure our tools are clean and disinfected.
- ✓ If body fluid become present during a service (i.e., blood, vomit, feces, etc.), how we deal with a situation without contaminating ourselves and others.

WORKPLACE SAFETY PRECAUTIONS

Test takers also need to be familiar and follow all workplace safety precautions. Here are some examples of the expectations of the test as well as an everyday business to familiarize a test taker with some of the industry safety standards.

- ✓ Cosmetologists must know and have a working understanding of workplace safety regulations issued by federal and state regulatory entities.
- ✓ Cross-contamination of chemicals and products on the workstation.
- ✓ Chemical mixing procedures, storage of chemicals and SDS sheets.
- ✓ Keeping the workstation safe from injury, cleaning up spills and picking up dropped items. Reducing a slip and fall or tripping incidents.
- ✓ Making certain tools and equipment are in safe working order, no frayed or exposed wires, rusty metals, etc.
- ✓ Tools and equipment are used in a safe manner.

TENNESSEE PSI NATIONAL BARBER PRACTICAL TEST TOPIC ORDER

TOPIC AREA: 1	WORKSTATION PREPARATION	10 MINUTES
TOPIC AREA: 2	HAIRCUTTING	30 MINUTES
TOPIC AREA: 3	STRAIGHT RAZOR SHAVING	VARIED TIMING
TOPIC AREA: 4	CHEMICAL WAVE	VARIED TIMING
TOPIC AREA: 5	FOIL HIGHLIGHTS	10 MINUTES
TOPIC AREA: 6	HYDROXIDE VIRGIN RELAXER	25 MINUTES
TOPIC AREA: 7	HAIRCOLOR RETOUCH	25 MINUTES
TOPIC AREA: B	BASIC FACIAL	25 MINUTES
TOPIC AREA: E	BASIC MANICURE	25 MINUTES
TOPIC AREA: 8	END-OF-DAY CLEAN-UP	10 MINUTES

DRAPING METHODS

LEARN DRAPING METHODS

The method of draping to be used depends on the service to be performed. There are several draping methods used in the barbershop and all require the use of a barrier (towel or neck strip) between the client's neck and the neckband of the cape. The barriers used are listed below; review Procedures 11-1 and 11-2 for guidelines on draping for wet, chemical, and haircutting services.

- **Shampoo service.** A cloth towel is positioned under the cape and folded over the neckband once the cape is secured. Another option for the shampoo service is to place a second towel over the cape neckline, secured with a clip, to use for blotting the hair after the shampoo procedure.
- **Chemical service.** A chemical service always requires a cloth towel under the cape and folded over the neckband once the cape is secured, followed by a cloth towel over the cape neckline and secured with a clip to provide protection from solution or chemical drips.
- **Haircut service.** For a haircut service, draping includes the use of a neck strip under and then folded over the neckband of the cape.
- **Shave service.** The shave service requires a special draping method to ensure that a barrier between the client's skin and the drape remain in place during the procedure. This method is described in detail in Chapter 13.

DRAPING FOR WET AND CHEMICAL SERVICES

MATERIALS, IMPLEMENTS, AND EQUIPMENT

- ☐ Clip
- ☐ Terry cloth towels
- ☐ Waterproof cape

PREPARATION

- 1 Assemble supplies.
- 2 Seat the client in a comfortable and relaxed position.
- 3 Wash your hands.

PROCEDURE



- 1 Hold the towel lengthwise in front of you. Grasp the towel by opposite diagonal corners and fold on the diagonal to maximize the length.



- 2 Place the towel lengthwise around the client's neck and shoulders, crossing the ends beneath the chin.



③ Drape a waterproof cape over the towel and fasten it at the back so that the cape does not touch the client's skin.



④ Position and flatten the top edge of the towel down over the neckline of the cape.



⑤ Options: Place another towel over the cape and secure it in front with a chair cloth clip; or fold the second towel in thirds and place it in the neck rest of the shampoo bowl to create a barrier between the client and the sink.

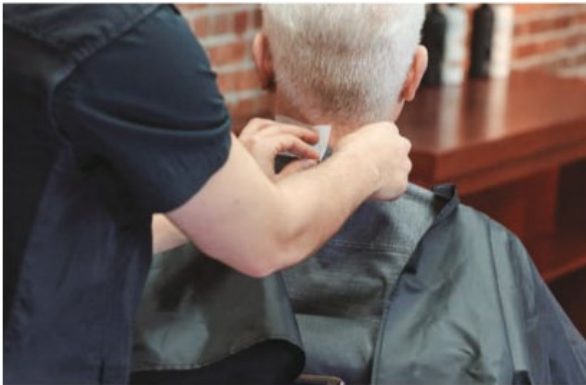
DRAPING FOR HAIRCUTTING SERVICES

MATERIALS, IMPLEMENTS, AND EQUIPMENT

- ☐ Haircutting cape
- ☐ Neck strips

PREPARATION

- 1 Assemble supplies.
- 2 Seat the client in a comfortable and relaxed position.
- 3 Wash your hands.



- 2 Place the neck strip around the client's neck from front to back.

- 3 Hold one end of the neck strip against the client's skin at the back or side of the neck while wrapping the rest of the strip.



- 4 Secure the second end of the neck strip by tucking it neatly into the band of the neck strip.



5 Lift the cape from across the client's shoulders, slide it into place around the neck, and fasten it at the back of the neck.



6 Fold and flatten the top edge of the neck strip over the neckline of the cape to prevent the client's skin from touching the drape.

TOPIC AREA:1 WORKSTATION PREPARATION

*****Make sure to sanitize before and after each service!*****

Bag 1: Workstation Set-up

- Tote no larger than 24x24
 - Hand sanitizer
 - Spray bottle labeled water
 - EPA spray (labeled)
 - Paper Towels
 - First Aid Kit
 - Gloves (labeled)
 - Manikin and stand
 - 1 single use trash bag (labeled)
 - 1 multi-use trash bag (labeled)
-

TOPIC AREA: 1 WORKSTATION PREPARATION ♦ 10 MINUTES

INSTRUCTIONS:

We will begin with **Daily Workstation Preparation**. 10 minutes will be provided to prepare your daily workstation. The proctor will announce when there are 5 minutes left to finish. When you complete your tasks, please stand quietly. Start your preparation, timing begins now.

EVALUATION:

- 1.1 Preparation of daily workstation
- 1.2 Adheres to workplace infection control precautions
- 1.3 Adheres to workplace safety precautions

INSTRUCTION:

- There are 5 minutes left to finish.
- Please stop working, the timing has ended.
- All scoring has been completed. We will now continue the test.

Step by Step: Workstation Preparation

- Remove the setup bag from kit and make sure to lock the lid back.
- Sit down bag on lid and remove paper towels and EPA Spray and wipe the table down.
- Hold paper towel while you hang the labeled single-use bag.
- Sanitize

Now you can proceed to set up station: EPA Spray, hand sanitizer, paper towels, first aid kit, gloves, and hang multi-use and single use bags

- Sanitize
 - Setup tri-pod or stand with mannequin
 - Sanitize
 - Stand back
 - Follow prompter's instructions:
-

TOPIC AREA:2 HAIRCUTTING

*****Make sure to sanitize before and after each service!*****

Bag 2: Haircutting

- Towel (2)
 - Cloth cape (can be a styling cape)
 - Clippers no guard
 - Shears
 - 4 Combs
 - 6 Butterfly clips
-

There is not specific haircut style that is required. Please see below for PSI instructions.

TOPIC AREA: 2 HAIRCUTTING ♦ 30 MINUTES

INSTRUCTIONS:

This evaluation is **Haircutting**. 10 minutes will be provided to set up your haircutting station and prepare your client for a haircut. The proctor will announce when there are 5 minutes left to finish. When you complete your tasks, please stand quietly. Start your preparation, timing begins now.

EVALUATION:

- 2.1 Preparation of workstation for haircutting
- 2.2 Adheres to workplace infection control precautions
- 2.3 Adheres to workplace safety precautions
- 2.4 Preparation of client for haircutting
- 2.5 Adheres to workplace infection control precautions
- 2.6 Adheres to workplace safety precautions

INSTRUCTION:

- There are 5 minutes left to finish.
- Please stop working, the timing has ended.

INSTRUCTIONS:

The haircutting evaluation requires the use of clippers and scissors/shears. Cut at least one-half (1/2) inch of hair from the head. Cut the hair with clippers for 5 minutes. The proctor will direct you when to stop. Start haircutting with clippers, timing begins now.

EVALUATION:

- 2.7 Haircutting with clippers
- 2.8 Adheres to workplace infection control precautions
- 2.9 Adheres to workplace safety precautions

INSTRUCTION:

- Please stop and stand quietly.
-

INSTRUCTION:

You will now cut hair with scissors/shears for 5 minutes. The proctor will direct you when to stop. Start haircutting with scissors/shears, timing begins now.

EVALUATION:

- 2.10 Haircutting with scissors/shears
- 2.11 Adheres to workplace infection control precautions
- 2.12 Adheres to workplace safety precautions

INSTRUCTION:

- Please stop and stand quietly.
- All scoring has been completed. We will now continue the test.

INSTRUCTIONS:

We will now continue with haircutting. 5 minutes will be provided to clean-up your haircutting workstation. The proctor will announce when there are 2 minutes left to finish. When you complete your task, please stand quietly. Start your clean-up, timing begins now.

EVALUATION:

- 2.13 Cuts minimum 1/2-inch hair throughout haircut
- 2.14 Cleans-up haircutting workstation
- 2.15 Adheres to workplace infection control precautions
- 2.16 Adheres to workplace safety precautions

INSTRUCTION:

- You have 2 minutes left to finish.
 - Please stop working, timing has ended.
 - All scoring has been completed. We will now continue the test.
-

TOPIC AREA:3 STRAIGHT RAZOR SHAVING

*****Make sure to sanitize before and after each service!*****

Bag 3: Straight Razor

- Shaving cream
 - Razor w/ blade
 - Steam towel (dampen before test)
 - Towel
-

FOUR SHAVE STROKE TYPES

Freehand Position and Stroke

Hold the razor in the right hand. The handle should rest between the third and fourth fingers, with the tip of the little finger resting on the tip of the tang. The thumb should sit securely on the side of the shank near the shoulder of the blade. The third finger should lie at the pivot with the first and second fingers in front of it on the back of the shank.

Turn the hand slightly outward from the wrist with the elbow at a comfortable level.

Keep the fingers of the left hand dry to prevent slipping.

Use the left hand to stretch the skin in the opposite direction of the stroke.

Use a gliding stroke toward you.

Lead with the point of the razor in a forward, gliding movement.

figure 13-8
Freehand position.



Reverse-Freehand Position and Stroke

The hand and razor position of the reverse-freehand stroke is similar to that of the freehand stroke, but the stroke is performed in an upward rather than a downward direction, usually with the barber standing at the client's shoulder or behind the client's head.

Hold the razor firmly in a freehand position.

Turn the hand slightly toward you so that the razor edge is turned upward.

Keep the hand dry and use it to pull the skin taut under the razor.

Position the fingers below or at the back of the razor opposite to the blade edge and direction of the stroke.

Use an upward, semi-arc'd stroke toward you in a gliding movement.

The movement is from the elbow to the hand with a slight twist of the wrist.

figure 13-10
Reverse-freehand position.



Backhand Position and Stroke

An alternative method is to bend the handle slightly so the third finger barely rests at the end of the tang and the fourth finger is bent into the palm.

Turn the back of the hand away from you and bend the wrist slightly downward. Then raise the elbow so that you can move the arm freely. This is the position used for the backhand stroke with the arm movement. Some practitioners prefer to use a wrist movement, in which case the arm is not held as high.

Keep the fingers of the left hand dry in order to prevent them from slipping.

Stretch the skin under the razor in the opposite direction of the stroke.

The shank of the razor should be held firmly between the thumb and first two fingers at the pivot with the razor held in a relatively straight position.

The underside of the handle rests on the third and fourth fingers.

Use a gliding stroke away from you.

Direct the stroke with the point of the razor leading in a forward, gliding movement.

figure 13-9
Backhand position.



Reverse-Backhand Position and Stroke

The holding position of the razor for the reverse-backhand stroke is the same as the backhand stroke except that the elbow is positioned downward (closer to the barber's body) and the forearm is held upward. When using this stroke, employ a downward gliding stroke that follows along the natural hairline along the side of the neck.

Hold the razor firmly in the backhand position.

Turn the wrist so that the palm faces upward.

Drop the elbow close to the side.

Position the left hand so as to be able to draw the skin taut under the razor.

Position your hand above the razor.

Use a smooth, gliding stroke.

Direct the stroke downward along the side of the neck.

figure 13-11
Reverse-backhand stroke.



TOPIC AREA: 3 STRAIGHT RAZOR SHAVING ♦ VARIED TIMING

INSTRUCTIONS:

This evaluation is **Straight Razor Shaving**. 10 minutes will be provided to set up your workstation and prepare your client for a straight razor shave. You are required to steam the face with a towel, and lather the face for a shave. The proctor will announce when there are 5 minutes left to finish. When you complete your tasks, please stand quietly. Start your preparation, timing begins now.

EVALUATION:

- 3.1 Preparation of workstation for straight razor shaving
- 3.2 Adheres to workplace infection control precautions
- 3.3 Adheres to workplace safety precautions
- 3.4 Preparation of client for straight razor shaving
- 3.5 Adheres to workplace infection control precautions
- 3.6 Adheres to workplace safety precautions

INSTRUCTION:

- There are 5 minutes left to finish.
- Please stop working, the timing has ended.

INSTRUCTIONS:

The shaving with a straight razor evaluation requires the use of a straight razor with a blade. The Evaluator will direct you individually to demonstrate each stroke. Demonstrate the stroke and stand back until further instruction is given. Please stand quietly and wait for the evaluator.

Note: Evaluator will observe and score each test taker one-on-one after timing has been stopped.

EVALUATOR INSTRUCTION:

Demonstrate a freehand stroke, begin now.

EVALUATION:

- 3.7 Demonstrates a freehand stroke
 - 3.8 Adheres to workplace infection control precautions
 - 3.9 Adheres to workplace safety precautions
-

EVALUATION:

- 3.10 Demonstrates a reverse freehand stroke
- 3.11 Adheres to workplace infection control precautions
- 3.12 Adheres to workplace safety precautions

EVALUATOR INSTRUCTION:

Demonstrate a backhand stroke, begin now.

EVALUATION:

- 3.13 Demonstrates a backhand stroke
- 3.14 Adheres to workplace infection control precautions
- 3.15 Adheres to workplace safety precautions

EVALUATOR INSTRUCTION:

Demonstrate a reverse backhand stroke, begin now.

EVALUATION:

- 3.16 Demonstrates a reverse backhand stroke
- 3.17 Adheres to workplace infection control precautions
- 3.18 Adheres to workplace safety precautions

EVALUATOR INSTRUCTION:

You have completed the shaving strokes. Please stand quietly.

INSTRUCTIONS:

We will now continue with shaving with a straight razor. 5 minutes will be provided to clean-up you're shaving with a straight razor workstation. The proctor will announce when there are 2 minutes left to finish. When you complete your task, please stand quietly. Start your clean-up, timing begins now.

EVALUATOR INSTRUCTION:

Demonstrate a reverse freehand stroke, begin now.

EVALUATION:

- 3.19 Clean-up Shaving with a Straight Razor workstation
- 3.20 Adheres to workplace infection control precautions
- 3.21 Adheres to workplace safety precautions

INSTRUCTION:

- You have 2 minutes left to finish.
- Please stop working, timing has ended.
- All scoring has been completed. We will now continue the test.

TOPIC AREA 4:CHEMICAL WAVE

*****Make sure to sanitize before and after each service!*****

Bag 4: Perm

- 3 towels
 - Plastic cape (can use child cape)
 - 6 Perm rods
 - Mock waving solution
 - End papers
 - 4 Tail combs
 - Cotton
 - Gloves (labeled)
 - Butterfly Clips
-

Preparation

1

Wash your hands.

2

Clean and disinfect all tools and implements.

3

Conduct client consultation.

4

Perform a hair and scalp analysis.

5

Select and arrange required materials.

Procedure

Divide the hair into nine panels. Use the length of the rod to measure the width of the panels. Remember to keep the hair evenly damp as you wrap.



Begin wrapping at the front hairline or crown. Make a horizontal parting the same size as the rod. Using two end papers, roll the hair down to the scalp in the direction of hair growth, and position the rod half off-base.





Continue wrapping the remainder of the first panel using the same technique. Option: Insert roller picks to stabilize the rods and eliminate any tension caused by the band.



Apply protective barrier cream to the hairline and the ears. Apply a coil of cotton around the entire hairline and offer the client a towel to blot any drips. Put on gloves.



Slowly and carefully apply the perm solution to each rod. Ask the client to lean forward while you apply solution to the back area; ask the client to lean back as you apply solution to the front and sides. Avoid splashing and dripping. Continue to apply the solution slowly until each rod is completely saturated. Apply solution to the most resistant area first.



If a plastic cap is used, punch a few holes in the cap and cover all the hair completely. Do not allow the plastic cap to touch the client's skin.



Check frequently for curl development. Unwind the rod and check the S pattern formation described in the preliminary test curl procedure. Check a different rod each time!



Clean-Up and Disinfection

- ☐ Clean and disinfect tools and implements.
- ☐ Clean and disinfect work area.
- ☐ Dispose of single-use items. Place all used linens, towels, and capes in the laundry.
- ☐ Wash your hands.

TOPIC AREA: 4 CHEMICAL WAVE ♦ VARIED TIMING

INSTRUCTIONS:

This evaluation is **Chemical Wave**. 10 minutes will be provided to set up your workstation for a chemical wave and prepare your client for a chemical service. Divide the head into 5 (five) sections. The proctor will announce when there are 5 minutes left to finish. When you complete your task, please stand quietly. Start your preparation, timing begins now.

EVALUATION:

- 3.1 Preparation of chemical wave workstation
- 3.2 Adheres to workplace infection control precautions
- 3.3 Adheres to workplace safety precautions
- 3.4 Preparation of client for chemical wave
- 3.5 Adheres to workplace infection control precautions
- 3.6 Adheres to workplace safety precautions

INSTRUCTION:

- You have 5 minutes left to finish.
- Please stop working, timing has ended.

INSTRUCTIONS:

10 minutes will be provided to wrap 3 permanent wave rods in one section of the head. The proctor will announce when there are 5 minutes left to finish. When you complete your tasks, please stand quietly. The evaluator will direct you to demonstrate saturation and a test curl. Start your chemical wave, timing begins now.

EVALUATION:

- 3.7 Wraps 3 permanent wave rods
 - 3.8 Adheres to workplace infection control precautions
-

3.9 Adheres to workplace safety precautions

INSTRUCTION:

- You have 5 minutes left to finish.
- Please stop working, timing has ended.
- Stand quietly and wait for the evaluator.

Note: Evaluator will observe and score each test taker one-on-one after timing has been stopped.

EVALUATOR INSTRUCTION:

Please saturate, stand back quietly when you finish.

EVALUATION:

- 3.10 Demonstrates saturation on all wrapped rods
3.11 Adheres to workplace infection control precautions
3.12 Adheres to workplace safety precautions

EVALUATOR INSTRUCTION:

Please perform a test curl, stand back quietly when you finish.

EVALUATION:

- 3.13 Demonstrates a test curl
3.14 Adheres to workplace infection control precautions
3.15 Adheres to workplace safety precautions

EVALUATOR INSTRUCTION:

Thank you, stand quietly and wait for further instructions.

INSTRUCTIONS:

We will now continue the chemical wave. 5 minutes will be provided to remove all rods and clean-up your chemical wave workstation. The proctor will announce when there are 2 minutes left to finish. When you complete your tasks, please stand quietly. Start your clean-up, timing begins now.

TOPIC AREA 5: FOIL COLOR

***** Make sure to sanitize before and after each service! *****

Bag 5: Color

- 6 Sheets of foil
 - 2 foiling combs
 - Mock Lightner
 - Color Brush
 - Gloves (labeled)
 - Towel
 - Color Bowl
 - Butterfly Clips
-

Procedure for Foil Technique

Part hair into six sections. Start by dividing the hair into four quadrants, from front hairline to nape, and ear to ear. In the front, you will then subdivide your right and left quadrants into a top and side section at the parietal ridge above the ear.

Prepare the lightening formula, and use it immediately.

Starting in the right back section, with a tail comb, take a thin diagonal slice or weave out the strands, following the shape of the hairline. From this slice you will then take a fine weave of hair and place a piece of foil under it.



Holding the hair taut, brush lightener starting from 2 inches from the top of the foil to the ends, using only enough product to secure the foil in place. Work the product up to $\frac{1}{4}$ inch from the edge of the foil.



Fold the foil in half until the ends meet.



Fold the foil in half again, using the comb to crease it.



Take a $\frac{1}{4}$ -inch subsection in between foils. Clip this hair up and out of the way. Note the contrast in size between the foiled and unfoiled subsections.

Continue working up the back right side of the head until the section is complete.



TOPIC AREA: 5 FOIL HIGHLIGHTS ♦ 10 MINUTES

INSTRUCTIONS:

This evaluation is **Foil Highlights**. 10 minutes will be provided to set up your workstation and prepare your client for a foil highlight. The proctor will announce when there are 5 minutes left to finish. When you complete your tasks, please stand quietly. Start your preparation, timing begins now.

EVALUATION

- 4.1 Preparation of workstation for foil highlights
- 4.2 Adheres to workplace infection control precautions
- 4.3 Adheres to workplace safety precautions
- 4.4 Preparation of client for foil highlights
- 4.5 Adheres to workplace infection control precautions
- 4.6 Adheres to workplace safety precautions

INSTRUCTION:

- You have 5 minutes left to finish.
- Please stop working, timing has ended.

INSTRUCTION:

10 minutes will be provided to place 3 foils in one section of the head. The proctor will announce when there are 5 minutes left to finish. When you complete your tasks, please stand quietly. Start your foils, timing begins now.

EVALUATION:

- 4.7 Applies three (3) highlight foils
- 4.8 Adheres to workplace infection control precautions
- 4.9 Adheres to workplace safety precautions

INSTRUCTION

- You have 5 minutes left to finish.
- Please stop working, timing has ended.

INSTRUCTION:

We will now continue the foil highlight. 5 minutes will be provided to clean-up your foil highlight workstation. The proctor will announce when there are 2 minutes left to finish. When you complete your tasks, please stand quietly. Start your clean-up, timing begins now.

EVALUATION

- 4.10 Cleans-up foil highlight workstation
- 4.11 Adheres to workplace infection control precautions
- 4.12 Adheres to workplace safety precautions

INSTRUCTIONS:

- You have 2 minutes left to finish.
 - Please stop working, timing has ended.
 - All scoring has been completed. We will now continue the test.
-

TOPIC AREA 6: HYDROXIDE RELAXER ON VIRGIN HAIR

*****Make sure to sanitize before and after each service!*****

Bag 6: Hydroxide Relaxer on Virgin Hair

- Wide tooth comb
 - Mock relaxer
 - 2 tail combs
 - 1 container of Vaseline labeled base protect.
 - Color brush
 - Color bowl
 - Gloves (labeled)
 - Butterfly clips
-

Preparation

1

Wash your hands.

2

Clean and disinfect all tools and implements.

3

Conduct client consultation.

4

Perform a hair and scalp analysis.

5

Select and arrange required materials.

6

Drape client for a chemical service.

Procedure

Perform an analysis of the hair and scalp by visually assessing the hair for breakage, sores on the scalp, or any visual signs of irritation. Feel the hair and perform an elasticity test. If hair fails the test for porosity and elasticity, do not perform the relaxer service.

Drape the client for a chemical service.



Part the hair into four sections, from the center of the front hairline to the center of the nape, and from ear to ear. Clip the sections up if necessary to keep hair out of the way.



Apply protective base cream to the hairline and ears.



Put gloves on both hands. Begin the relaxer application in the most resistant area, usually at the back of the head or nape area. Make $\frac{1}{4}$ -inch to $\frac{1}{2}$ -inch horizontal partings, and apply the relaxer to the top of the strand first. Do not apply to the scalp.



Apply relaxer to the underside of the first section using an applicator brush or the back of a tail comb. Apply relaxer $\frac{1}{4}$ -inch to $\frac{1}{2}$ -inch away from the scalp, and up to the porous ends. To avoid scalp irritation, do not allow the relaxer to touch the scalp until the last few minutes of processing.



Continue applying relaxer to other sections, working your way down the section toward the hairline. Continue the same application procedure with the remaining sections.

TOPIC AREA: 6 HYDROXIDE VIRGIN RELAXER ♦ 25 MINUTES

INSTRUCTIONS:

This evaluation is Hydroxide Virgin Relaxer. 10 minutes will be provided to set up your workstation and prepare your client for a hydroxide virgin relaxer. The proctor will announce when there are 5 minutes left to finish. When you complete your tasks, please stand quietly. Start your preparation, timing begins now.

EVALUATION:

- 5.1 Preparation of virgin relaxer workstation
- 5.2 Adheres to workplace infection control precautions
- 5.3 Adheres to workplace safety precautions
- 5.4 Preparation of client for a virgin relaxer
- 5.5 Adheres to workplace infection control precautions
- 5.6 Adheres to workplace safety precautions

INSTRUCTION:

- You have 5 minutes left to finish.
- Please stop, the timing has ended.

INSTRUCTIONS:

10 minutes will be provided to apply 3 subsections of a hydroxide virgin relaxer in one section of the head. The proctor will announce when there are 5 minutes left to finish. When you complete your tasks, please stand quietly. Start your hydroxide virgin relaxer, timing begins now.

EVALUATION:

- 5.7 Applies a virgin relaxer to three (3) individual subsections
- 5.8 Adheres to workplace infection control precautions
- 5.9 Adheres to workplace safety precautions

INSTRUCTION:

- You have 5 minutes left to finish.
- Please stop, the timing has ended.

INSTRUCTIONS:

We will now continue the hydroxide virgin relaxer. 5 minutes will be provided to clean-up your hydroxide virgin relaxer workstation. The proctor will announce when there are 2 minutes left to finish. When you complete your tasks, please stand quietly. Start your clean-up, timing begins now.

EVALUATION:

- 5.10 Cleans-up virgin relaxer workstation
- 5.11 Adheres to workplace infection control precautions
- 5.12 Adheres to workplace safety precautions

TOPIC AREA 7: COLOR RETOUCH

***** Make sure to sanitize before and after each service! *****

Bag 7: Color Retouch

- 2 Tail combs
 - Mock color
 - Color brush
 - Color bowl
 - Gloves (labeled)
 - Towel
-

Virgin Application Procedure

Put on gloves and part dry hair into four sections. Most permanent haircolors do not require shampooing before the application of color.

Prepare color formula for either bottle or brush application method.



Part off $\frac{1}{4}$ -inch subsections and apply color to the mid-shaft area. Stay at least $\frac{1}{2}$ inch from the scalp and do not apply to the porous ends at this time.

*****PER Tennessee State PSI testing you must apply a 2 inch haircolor retouch into three subsections. See PSI details below*****



TOPIC AREA: 7 HAIRCOLOR RETOUCH ♦ 25 MINUTES

INSTRUCTION:

This evaluation is **Haircolor Retouch**. 10 minutes will be provided to set up your workstation and prepare you client for a haircolor retouch. The proctor will announce when there are 5 minutes left to finish. When you complete your task, please stand quietly. Start your preparation, timing begins now.

EVALUATION:

- 6.1 Preparation of hair color retouch workstation
- 6.2 Adheres to workplace infection control precautions
- 6.3 Adheres to workplace safety precautions
- 6.4 Preparation of client for a hair color retouch
- 6.5 Adheres to workplace infection control precautions
- 6.6 Adheres to workplace safety precautions

INSTRUCTION:

- You have 5 minutes left to finish.
- Please stop, the timing has ended.

INSTRUCTIONS:

10 minutes will be provided to apply three (3) subsections with a two (2) inch haircolor retouch in one section of the head. The proctor will announce when there are 5 minutes left to finish. When you complete your tasks, please stand quietly. Start your haircolor retouch, timing begins now.

EVALUATION:

- 6.7 Applies a 2-inch retouch to three individual subsections of hair
- 6.8 Adheres to workplace infection control precautions
- 6.9 Adheres to workplace safety precautions

INSTRUCTION:

- You have 5 minutes left to finish.
 - Please stop, timing has ended.
-

INSTRUCTION:

We will now continue the haircolor retouch. 5 minutes will be provided to clean-up your haircolor retouch workstation. The proctor will announce when there are 2 minutes left to finish. When you complete your tasks, please stand quietly. Start your clean-up, timing begins now.

EVALUATION:

- 6.10 Cleans-up color retouch workstation
- 6.11 Adheres to workplace infection control precautions
- 6.12 Adheres to workplace safety precautions

INSTRUCTION:

- You have 2 minutes left to finish.
- Please stop working, the timing has ended.
- All scoring has been completed. We will now continue the test.

TOPIC AREA 8: FACIAL

*****Make sure to sanitize before and after each service!*****

Bag 8: Facial

- Head band
 - Towel
 - Mock cleanser, massage cream, toner
 - 6 2x2
 - 5 popsicle sticks
 - Steam towel
 - Gloves (labeled)
-

MASSAGING MANIPULATIONS

Effleurage (EF-loo-rahzh) is a stroking movement. It is a light, continuous movement that should be applied in a slow and rhythmic manner over the skin, with no pressure (**Figure 12-4**). The palms are used over large surfaces and the fingertips work the small surfaces, such as those around the eyes. Effleurage is frequently used on the forehead, face, and scalp for its soothing and relaxing effects and to apply lotions or creams.

- To correctly position the fingers for the stroking movement, slightly curve the fingers with just the cushions of the fingertips touching the skin. Do not use the ends of the fingertips for these massage movements since they are pointier than the cushions and the fingernails may scratch the client's skin.
- When using the palms for the stroking movement, keep your hands loose and your wrists and fingers flexible. Curve your fingers and palms to conform to the shape of the area being massaged.

figure 12-4

Stroking movement with the fingertips.



Pétrissage (PEH-treh-sahzh) is a kneading movement that is performed with light, firm pressure.

- In this movement, the skin and flesh are grasped between the thumb and fingers. As the tissues are lifted from their underlying structures, they are gently squeezed, rolled, or pinched with a light, firm pressure.
- Pétrissage exerts an invigorating effect on the area being massaged. These kneading movements provide deeper stimulation to the muscles, nerves, and skin glands and also help to improve circulation.
- Although kneading movements are usually used on large surfaces such as the shoulders and back, the fingertips can be used to gently knead the cheeks with light pinching movements (**Figure 12-5**).

figure 12-5
Pétrissage.



Friction (FRIK-shun) is a deep rubbing movement in which pressure is applied on the skin with the fingers or palms while moving over an underlying structure. Friction has been proven to be beneficial to the circulation and glandular activity of the skin (**Figure 12-6**).

- Light circular friction is used on the face and neck.
- Circular friction movements with more pressure can be used during scalp massages.

figure 12-6
Friction.



Percussion (pur-KUSH-un) or **tapotement** (tah-POT-ment) consists of short, quick tapping, slapping, or hacking movements. Percussion movements stimulate the nerves to tone the muscles and impart a healthy glow to the part being massaged. Since percussion is the most stimulating form of massage, it needs to be performed with care and discretion.

- Tapping movements are the gentlest form of tapotement and can be used in facial massage by bringing the fingertips down against the skin in rapid succession with even force (Figure 12-7).
- In slapping movements, the lower points to midpoints of the fingers are used to strike the skin lightly and rapidly. One hand follows the other and should lift the skin slightly with each slapping stroke.
- Hacking, or chopping movements, employs the outer edges of the hands to strike against the skin in alternate succession. Hacking should only be used on the back and shoulders.

Figure 12-7



Percussion.

Vibration (vy-BRAY-shun) is a rapid shaking movement over the skin section with the fingertips or an electric massager or vibrator. Both methods are used to transmit a trembling movement to the skin and its underlying structures.

- Vibration should be used sparingly and not exceed a few seconds' duration on any one area to avoid overstimulation (Figure 12-8).
- Deep vibration with a mechanical vibrator or massager can stimulate blood circulation and increase muscle tone.

Figure 12-8



Vibration.

Basic Facial Procedure

Preparation

- 1 Assemble supplies.
- 2 Wash your hands.
- 3 Perform client consultation.
- 4 Drape the client, recline the chair, and cover the client's hair with towel or plastic cap.
- 5 Analyze the client's skin.

Procedure

Apply cleansing cream over the client's face, using stroking and rotary movements.



Remove the cleansing cream with a warm, damp towel.



Apply two or three steam towels to open pores and loosen imbedded dirt and oils.



Reapply cleansing cream to the skin with your fingertips.



Wipe off excess product with a warm towel until the skin is free of exfoliating residue.



Apply massage cream and perform effleurage, percussion, and tapotement manipulations.

Remove excess massage cream with a warm towel and gently wipe selected tonic over the face and pat dry.

Clean-Up and Disinfection

- ☐ Dispose of single-use items. Place all used linens, towels, and capes in the laundry.
- ☐ Wipe containers and close tightly. Store in an appropriate place.
- ☐ Clean and then disinfect all non-disposable implements and tools.
- ☐ Clean and then disinfect work area.
- ☐ Wash your hands.

TOPIC AREA: B BASIC FACIAL ♦ 25 MINUTES

INSTRUCTIONS:

This evaluation is **Basic Facial**. 10 minutes will be provided to set up your workstation and prepare your client for a basic facial. The proctor will announce when there are 5 minutes left to finish. When you complete your tasks, please stand quietly. Start your preparation, timing begins now.

EVALUATION:

- A.1 Preparation of basic facial workstation
- A.2 Adheres to workplace infection control precautions
- A.3 Adheres to workplace safety precautions
- A.4 Preparation of client for a blow dry and thermal curl
- A.5 Adheres to workplace safety precautions
- A.6 Adheres to workplace safety precautions

INSTRUCTION:

- You have 5 minutes left to finish.
- Please stop working, the timing has ended.

INSTRUCTIONS:

10 minutes will be provided to complete a basic facial. The proctor will announce when there are 5 minutes left to finish. When you complete your tasks, please stand quietly. Start your basic facial, timing begins now.

INSTRUCTION:

- Please stop working, the timing has ended.

EVALUATION:

- A.7 Demonstrates a basic facial using a towel steam process
- A.8 Adheres to workplace infection control precautions
- A.9 Adheres to workplace safety precautions

INSTRUCTION:

- You have 5 minutes left to finish.
- Please stop and stand quietly.

INSTRUCTIONS:

We will now continue the basic facial. 5 minutes will be provided to clean-up your basic facial workstation. The proctor will announce when there are 2 minutes left to finish. When you complete your tasks, please stand quietly. Start your clean-up, timing begins now.

EVALUATION:

- A.13 Cleans-up basic facial workstation
- A.14 Adheres to workplace infection control precautions
- A.15 Adheres to workplace safety precautions

INSTRUCTION:

- You have 2 minutes left to finish.
- Please stop working, the timing has ended.
- All scoring has been completed. We will now continue the test.

TOPIC AREA 9: MANICURE

***** Make sure to sanitize before and after each service (fake hand too)!**

Bag 9: Manicure

- Finger bowl
 - Fake hand with 5 fingers with nails attached.
 - 4 orange wood sticks with
 - Cotton
 - Nail file
 - Nail brush
 - Cuticle pusher
 - Mock cuticle remover
 - Massage cream
 - Alcohol towel
 - 4 2x2s
 - Towel
 - Gloves (labeled)
-

Pre-Service Procedure

- 1** Apply gloves. Clean and disinfect reusable tools and implements and store in clean dry container until needed.
- 2** Clean and disinfect manicure table and drawer with an EPA-approved disinfectant.
- 3** Remove gloves and wash your hands.
- 4** Conduct client consultation.

Procedures

Cleaning and Disinfecting

It is important to wear gloves while performing this pre-service procedure to prevent possible contamination of the implements by your hands and to protect your hands from the powerful chemicals in the disinfectant solution.



Materials, Implements, and Equipment

Perform pre-service and table setup procedures.

Wash your hands. Have the client wash his hands or apply a hand sanitizer. Thoroughly dry hands and nails with a sanitized towel. Apply gloves if required.

Procedure

Shape the nails. Most men keep their nails fairly short; if the nails are long, shorten them with fingernail clippers before filing. File from the corners to center in one direction; do not saw back and forth.



Soften the cuticles. After filing the nails of the left hand, soak them in a soap bath while filing the second hand.



Clean the nails. Use a nail brush to clean fingertips and nails and to remove surface debris from nails. Remove the left hand from the soap bath while placing the right hand into the bath, and brush the fingers with downward strokes, starting at the first knuckle and brushing in one direction toward the free edge.



Dry the hand. Use the end of a clean towel, making sure to dry between the fingers. As you dry, gently push back the eponychium with the towel.



Apply cuticle remover. Use a cotton-tipped wooden pusher to apply cuticle remover to each nail on the left hand. Put client's left hand back into the bath while repeating cleansing steps on the right hand. Apply cuticle remover to right hand, remove left hand from bath, and replace with right hand.



Loosen the cuticles. Use the spoon end of the pusher or a wooden pusher to gently push back and lift the cuticle off the nails of the left hand. Repeat on right hand.



Use nippers, if allowed in your state, to remove any loosely hanging tags of dead skin only; do not cut living skin.



Clean under the free edge with a cotton-tipped wooden pusher while holding the left hand over the soap bath, and brush a last time to remove bits of cuticle and nail debris that remain on the nail. Rest the left hand on a clean towel and repeat this procedure on the right hand.



Apply cuticle oil. Use a cotton-tipped wooden pusher, a cotton swab, or an eyedropper to apply and massage oil into the nail plate and surrounding skin using a circular motion.

TOPIC AREA: E BASIC MANICURE ♦ 25 MINUTES

INSTRUCTIONS:

This evaluation is **Basic Manicure**. 10 minutes will be provided to set up your workstation and prepare your client for a basic manicure. The proctor will announce when there are 5 minutes left to finish. When you complete your tasks, please stand quietly. Start your preparation, timing begins now.

EVALUATION:

- B.1 Preparation of basic manicure workstation
- B.2 Adheres to workplace infection control precautions
- B.3 Adheres to workplace safety precautions
- B.4 Preparation of client for a basic facial
- B.5 Adheres to workplace infection control precautions
- B.6 Adheres to workplace safety precautions

INSTRUCTION:

- You have 5 minutes left to finish.
- Please stop working, the timing has ended.

INSTRUCTIONS:

10 minutes will be provided to complete a basic manicure. The proctor will announce when there are 5 minutes left to finish. When you complete your tasks, please stand quietly. Start your basic manicure, timing begins now.

EVALUATION:

- B.7 Performs a basic manicure
- B.8 Adheres to workplace infection control precautions
- B.9 Adheres to workplace safety precautions

INSTRUCTIONS:

We will now continue the basic manicure. 5 minutes will be provided to clean-up your basic manicure workstation. The proctor will announce when there are 2 minutes left to finish. When you complete your tasks, please stand quietly. Start your clean-up, timing begins now.

EVALUATION:

- B.10 Cleans-up basic manicure workstation
- B.11 Adheres to workplace infection control precautions
- B.12 Adheres to workplace safety precautions

INSTRUCTION:

- You have 2 minutes left to finish.
- Please stop working, the timing has ended.
- All scoring has been complete. We will now continue the test.

END OF DAY CLEANUP

TOPIC AREA: 8 END-OF-DAY CLEAN-UP ♦ 10 MINUTES

INSTRUCTIONS:

This evaluation is **End-of-Day Clean Up**. 10 minutes will be provided to clean-up your workstation. The proctor will announce when there are 5 minutes left to finish. When you complete your tasks, please stand quietly. Start your daily clean-up, timing begins now.

EVALUATION:

- 7.1 Day end clean-up of workstation
- 7.2 Adheres to workplace infection control precautions
- 7.3 Adheres to workplace safety precautions

INSTRUCTION:

- You have 5 minutes left to finish.
 - Please stop working, the timing has ended.
 - All scoring has been completed. We will now continue the test.
-