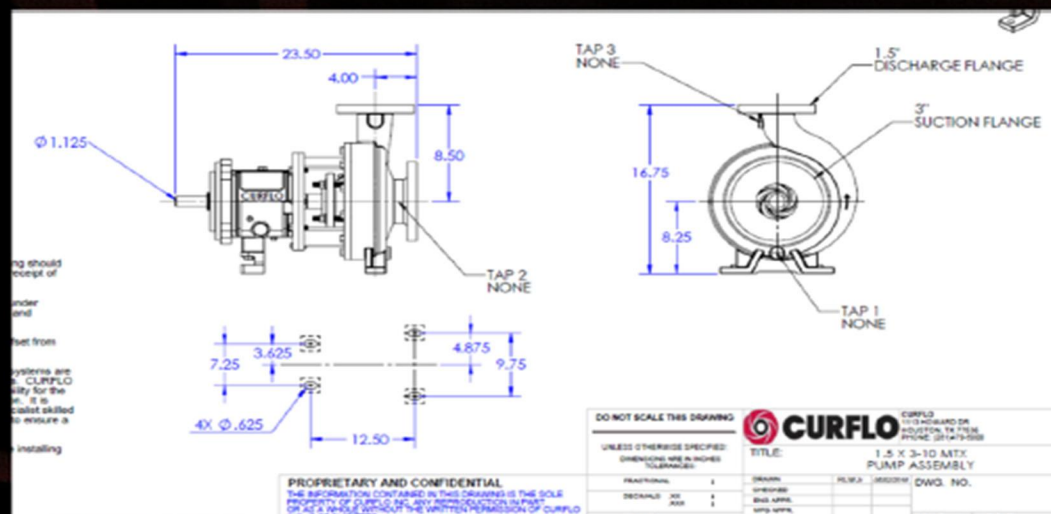


ANSI B73.1 Pump Standard

Specification for Horizontal End Suction Centrifugal Pumps for Chemical Process

- Address design and specification for single stage centrifugal pumps for chemical process
- Include design features to facilitate installation and maintenance and to enhance reliability and safety
- Include dimensional interchangeability requirements so that pumps from any source of supply will be interchangeable



B73 Application Range

- Size: 1.5x1-6 through 10x8-17
- Flow: 4,000 gpm (909 m³/h) at 60 Hz
- Head: 600 feet (183 meters) at 60 Hz
- Temperature: up to 500°F (260°C)

