

**RELIABILITY AND VALUE**



**Hand crafted stator** ensures precision winding combined with robust VPI insulation system.

# Motors & Relationships Built to Last

## Quality is the main ingredient

Techtop motors are designed with unique premium features to ensure reliable operation in severe environments. Our network of warehouses means product is readily available across the USA.

**[techttop.com](https://techttop.com)**



Quality



Performance



Availability



Customization

# | Company Overview

---



**TECHTOP** is a family owned company taking complete ownership in the design, manufacturing and sale of electric motor products for industrial and commercial applications.

- Global corporation with three production facilities & 10 overseas subsidiaries
- Setting the standard for innovation, design and construction
- A worldwide leader in aluminum frame electric motor production







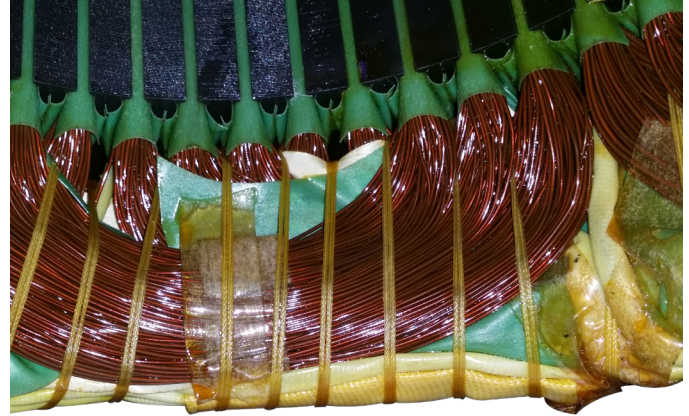
# | Lap Winding vs. Concentric Winding



**Lap Winding** is a hand wound system ensuring precision placement of coils and phase insulation.

- Manually inserted, less wire stress
- VPI insulation, eliminates resin voids
- Sealed with Anti-microbial coating

## COMPETITOR



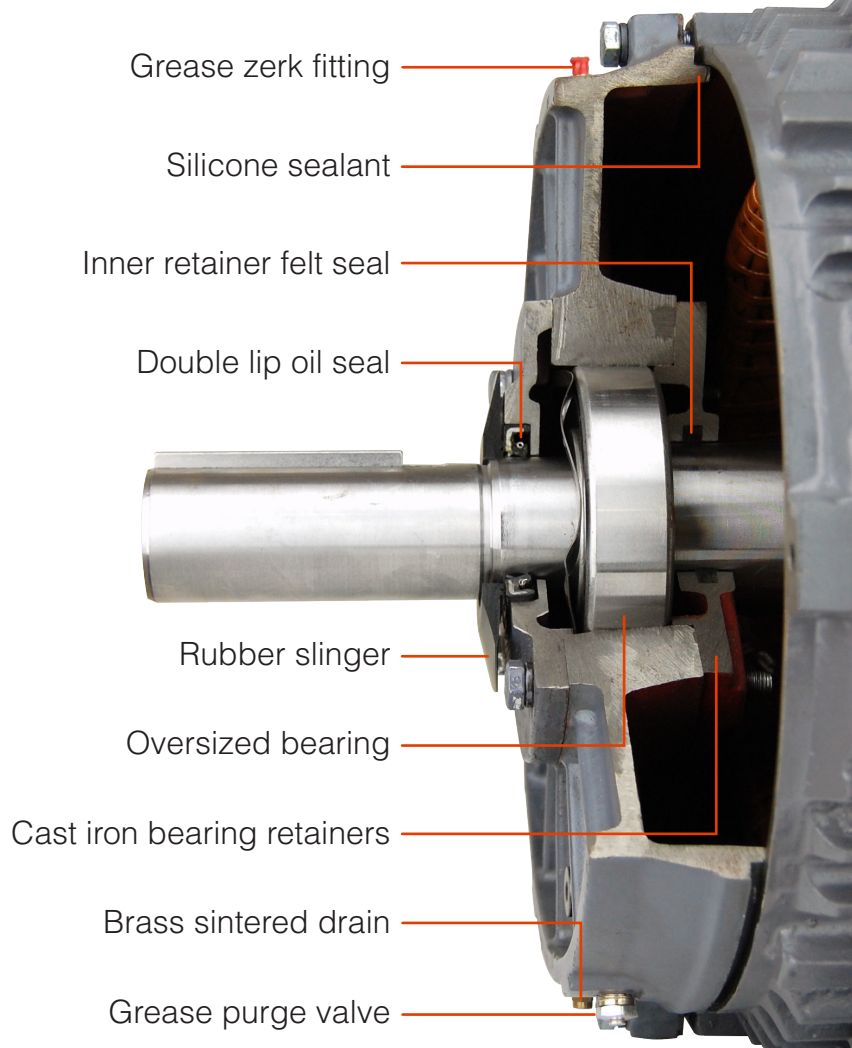
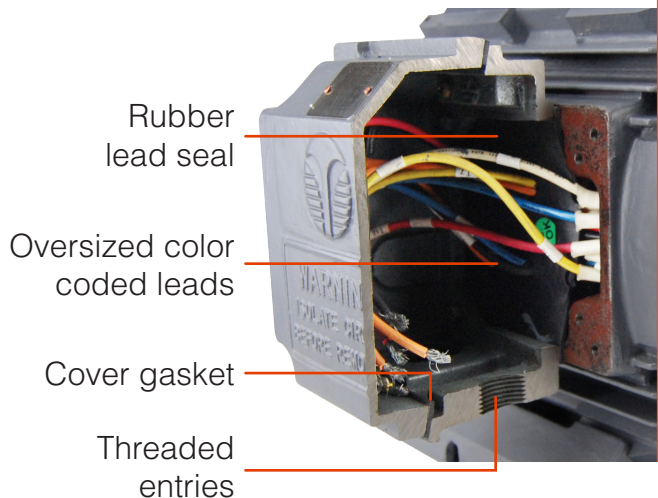
**Concentric Winding** is a machine wound system subject to more coil and phase overlap.

- Higher probability of phase to phase short
- Dip and Bake process poses higher potential for air pockets in resin



# Ingress Protection

TECHTOP's standard TEFC enclosure meets severe duty IP55. An innovative approach to bearing and terminal box sealing keeps harsh environment elements outside the motor.



# | TECHTOP USA

---



**TECHTOP USA** was formed in 2008 in an effort to bring service and support to America with the growing TECHTOP line. While developing the US market, we observed the motor industry was reversing in terms of design and overall quality of product. With feedback from end users, EASA shops and OEM's, we set out on a mission to build a better motor for the customer. Today TECHTOP is setting the standard in the low voltage motor market.

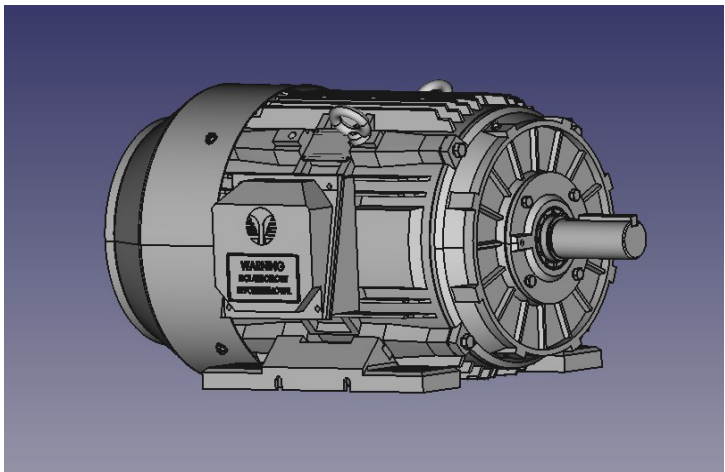
- James Muldoon , TECHTOP USA General Manager



# Warehouse Locations



**Application Engineering** In our local Techtop office, technical support is available and ready to help you every step of the way. We offer online ready data, 3D & 2D technical drawings, and a talented team of engineers to help you navigate any challenges that may arise.

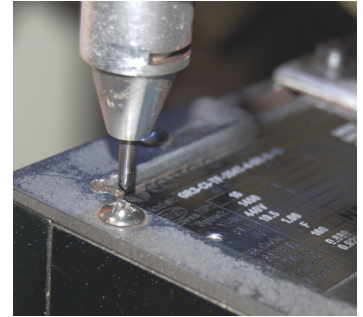
[illegible]

# | TECHTOP Modification Shop

---

**Customization** Our motor modification shop is ready and available to get you the custom motors you need in a timely manner. Our short cycles provide a quick turnaround because when you need it now, is when you need it most. Let our Techtop team of professional motor technicians take your express needs for non-standard product. We will give it our top priority.

**OEM Specialty** OEM partnerships often require custom solutions as a standard to fit their equipment needs. Techtop has experience and success in the design and manufacture of such custom engineered products. Give us a call today to discuss any challenging applications for Techtop to propose a value added solution.



## | TECHTOP Product Line

---

**Cast Iron Premium Series** Three phase, NEMA premium efficient, 2,4,and 6 pole, 1 to 250HP, Inverter Rated - 15:1 Constant Torque, MG1 Part 31 Compliant for VFD use. Ideal for numerous industrial applications.

---



**Aluminum Premium Series** Three Phase, NEMA premium efficient, 2/4/6 Pole, 1-15 HP, Inverter Rated - 15:1 Constant Torque, MG1 Part 31. Light weight frame is perfect for difficult installations or the weight conscience OEM.

---



**Metric IEC Premium Series** Three Phase, NEMA premium efficient, 2/4/6 Pole, 1/8-150 HP, 0.09-110kW, Inverter Rated - 15:1 Constant Torque, MG1 Part 31 Compliant for VFD use. Increase / decrease flanges available.

---



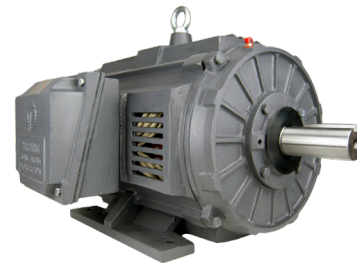


## | TECHTOP Product Line

---

**Open Drip Proof Premium Series** Three phase, premium efficient, 1 to 150HP, IP23 Rated, Inverter Rated - 15:1 Constant Torque, MG1 Part 31 Compliant for VFD use. Ideal for numerous industrial applications.

---



**IEEE 841 Severe Duty Series** Three Phase, NEMA premium efficient, 2/4/6 Pole, 15-250 HP, IP56 Protection, Inpro seals, 3 lead connection, Inverter Rated - 15:1 Constant Torque, MG1 Part 31 Compliant for VFD use. Ideal for harsh environment applications.

---



**JM/JP Pump Series** Three Phase, 2/4 Pole, 1/3-50HP, IP 55 Rated, Continuous Duty, Dual voltage, Inverter Rated - 20:1 Variable Torque, MG1 Part 31 Compliant for VFD use. Ideal for Pump, Aerator, Turbine applications.

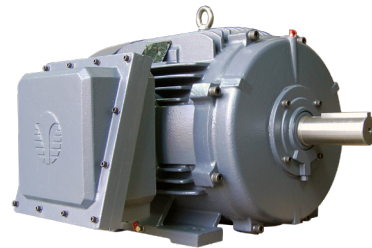
---



# | TECHTOP Product Line

**Explosion Proof Series** Three phase, NEMA premium efficient, 2,4,and 6 pole, 1 to 250HP, Certified for Hazardous location, IP 54, IEEE 45, Inverter Rated - 4:1 Constant Torque, MG1 Part 31. Ideal for Hazardous location applications.

---



56C Frame



HVAC



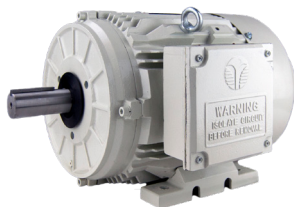
Farm Duty



Crusher Duty



Washdown Duty



Oil Pumper



Phase Converter



Blower Kits

# **Warranty Protection**

---

TECHTOP is committed to 100% customer satisfaction. All of our warranty times start from Date of Purchase. For more info contact :

Email : [warranty@techttopind.com](mailto:warranty@techttopind.com)

## **Single Phase**

---

All Motor Lines - 18 Months

## **Three Phase**

---

Blue Line - 24 months  
Green Line - 36 months  
Brown Line - 60 months  
Black Line - 24 months  
Gray Line - 24 months  
Orange Line 24 months



**Techtop is the right choice for better business.** As you can tell by our motors, we are not satisfied with the normal standards. We continue to strive for excellence in everything we do. We are proud to create motors and relationships built to last. We are ready, Are you?



© Techttop Motor Co., U.S.A., Inc. Peachtree Corners, GA

**techttop.com**

1-855-TECHTOP



E

c



us

