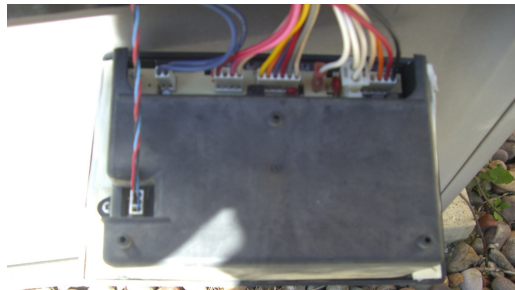


InSyncEngineering

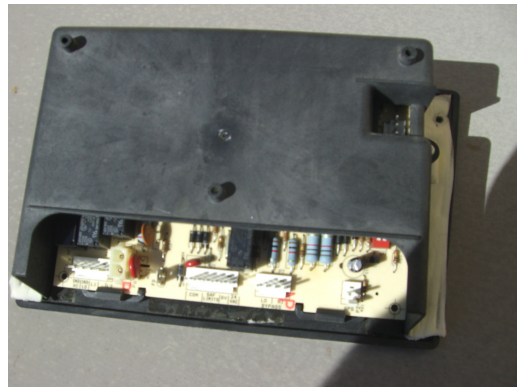
BEFORE DOING ANY OF THESE STEPS SHUT OFF ALL POWER TO THE HEATER BY FLIPPING THE CIRCUIT BREAKERS ON YOUR POOL EQUIPMENT. IF YOU DO NOT KNOW HOW TO DO THIS FIND A NEIGHBOR THAT DOES – IT IS REALLY SIMPLE AND YOU SHOULD NOT HAVE TO PAY AN ELECTRICIAN TO HELP YOU. **IF YOU DO NOT FEEL COMFORTABLE THAN PAY AN ELECTRICIAN!**



STEP 1. ALL OF THESE HAYWARD PANELS ARE THE SAME FIRST REMOVE THE PLASTIC PANEL. YOU MAY HAVE TO GET TO THE SCREWS FROM THE FRONT (AS SHOWN) OR ON SOME FROM THE BACK

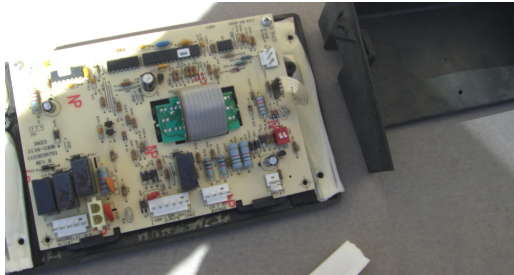


STEP 2. REMOVE ALL THE CONNECTIONS AT THE BACK. THE CONNECTORS ARE ALL KEYED BUT YOU MAY NEED TO TAKE A PICTURE TO REMEMBER HOW TO HOOK IT BACK UP



STEP 3. REMOVE THE REAR PLASTIC SHROUD IF YOU NEED TO GET TO WHERE THE DISPLAY CONNECTOR IS. AGAIN TAKE A PICTURE OF YOU PANEL AS YOU DISASSEMBLE IT.

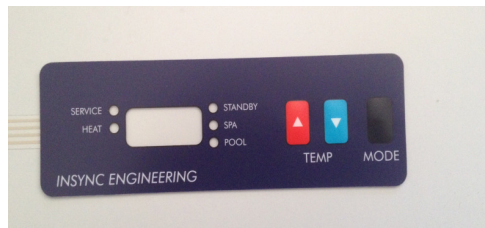
InSyncEngineering



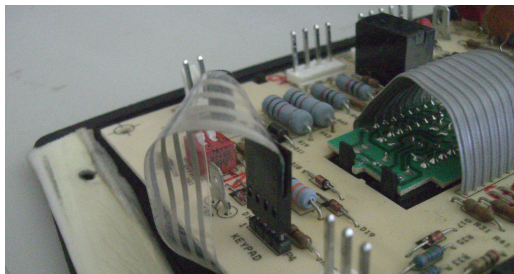
STEP 4. YOU SHOULD NOW BE ABLE TO SEE THE KEYPAD CONNECTION. UNPLUG IT AND THEN IF YOU CAN REMOVE THE OLD KEYPAD FROM THE FRONT PLASTIC. YOU MAY HAVE TO LOOSEN THE SCREWS ON THE PRINTED CIRCUIT BOARD TO REMOVE THE CONNECTOR TAIL.



STEP 5. REMOVE THE OLD KEYPAD. IT SHOULD JUST PEEL OFF. THEN CLEAN THE OLD PLASTIC SURFACE WITH SOME WINDEX OR DEGREASER TO GET IT READY FOR THE NEW KEYPAD



STEP 6. INSTALL YOUR NEW KEYPAD, JUST PEEL OFF THE BACKING AND LINE UP THE CONNECTOR AND TAIL THROUGH THE SLOT AND LINE UP THE DISPLAY AND LEDs



PLUG IN YOUR NEW KEYPAD TO THE KEYPAD CONNECTOR – JUST AS YOU UNPLUGGED THE OLD CONNECTOR

STEP 8. HOOK BACK UP ALL THE CONECTIONS AND RE-INSTALL THE PANELS. ENJOY THE FACT THAT YOU JUST SAVED A LOT OF MONEY!