

# InSyncEngineering

BEFORE DOING ANY OF THESE STEPS SHUT OFF ALL POWER TO THE HEATER BY FLIPPING THE CIRCUIT BREAKERS ON YOUR POOL EQUIPMENT. IF YOU DO NOT KNOW HOW TO DO THIS FIND A NEIGHBOR THAT DOES – IT IS REALLY SIMPLE AND YOU SHOULD NOT HAVE TO PAY AN ELECTRICIAN TO HELP YOU. **IF YOU DO NOT FEEL COMFORTABLE THAN PAY AN ELECTRICIAN!**



STEP 1. ALL OF THESE HAYWARD PANELS ARE THE SAME FIRST REMOVE THE PLASTIC PANEL. YOU MAY HAVE TO GET TO THE SCREWS FROM THE FRONT (AS SHOWN) OR ON SOME FROM THE BACK

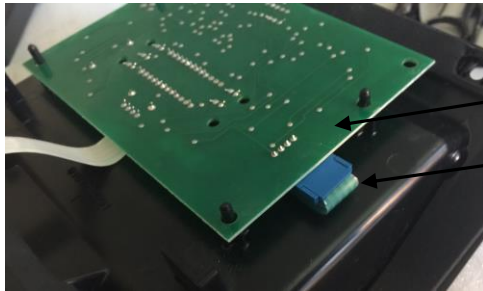


STEP 2. UNPLUG THE LONG RIBBON CONNECTION AT THE BOTTOM FROM YOUR CONTROL BOARD.



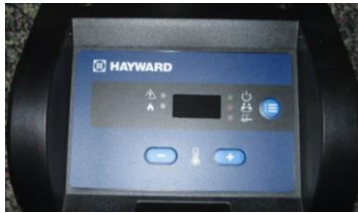
STEP 3. REMOVE THE REAR PLASTIC SHROUD THAT SAYS “ DO NOT REMOVE VOIDS WARRANTY” AT THIS POINT YOU HAVE NOTHING TO LOSE AND REMOVING THIS PANEL ALLOWS YOU TO GET TO THE KEYPAD CONNECTOR. USE A FLAT BLADE SCREW DRIVER AND SLIDE UNDER THE PANEL IN EACH OF THE FOUR CORNERS. GIVE A SLIGHT TWIST.

# InSyncEngineering



DISPLAY BOARD  
KEYPAD CONNECTION

STEP 4. YOU SHOULD NOW BE ABLE TO SEE THE KEYPAD CONNECTION. UNPLUG THE CONNECTOR. HANDLE THE DISPLAY BOARD BY THE EDGES ONLY. YOU CAN DAMAGE THIS BOARD BY ELECTRO STATIC DISCHARGE IF YOU ARE NOT CAREFUL. SET BOARD ASIDE.

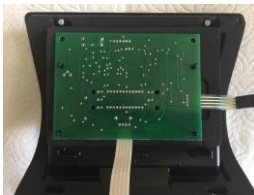


STEP 5. REMOVE THE OLD KEYPAD. IT SHOULD JUST PEEL OFF. THEN CLEAN THE OLD PLASTIC SURFACE WITH SOME WINDEX OR DEGREASER TO GET IT READY FOR THE NEW KEYPAD. USE A RAZOR BLADE IF NECESSARY.



STEP 6. INSTALL YOUR NEW KEYPAD, JUST PEEL OFF THE BACKING AND LINE UP THE CONNECTOR AND TAIL THROUGH THE SLOT AND LINE UP THE DISPLAY AND LEDs

KEYPAD CONNECTOR



CONTROL BOARD CABLE AND CONNECTOR



STEP 7. ON THE BACKSIDE, RE-ATTACH THE DISPLAY BOARD, PLUG THE KEYPAD CONNECTOR, RE-ATTACHE THE REA COVER, PLUG BACK IN THE DISPLAY CONNECTOR TO YOUR CONTROL BOARD. SCREW THE PANEL BACK ONTO YOUR HEATER. TURN ON THE GAS AND ELECTRIC.

REJOICE IN THE FACT THAT YOU JUST SAVED ABOUT \$500 IN REPAIR COSTS!!!