

PRODUCT DESCRIPTION

Cobrahead Small Chassis

LUM100SSL Series
20W - 80W

Dark Sky Friendly LED Street Lamp



FEATURES

Optical

Replaces 50W - 150W HPS or MH street and area lighting.

Wide variety of colour temperatures and CRI available to suit your project.

Customised shielding available.

Electrical

120-277V Driver with 0.98 Power Factor at 120V and <20% THD.

Prewired with ANSI C136.41 Standard 5-Pin Photocell Receptacle.

0-10V Standard.

Construction

1EPA<0.1m²

APPLICATIONS

Municipalities

Parks

Roadways

Airports

Transportation Stations.

OPTIONS

10kVa & 20kVa Surge Protection

Opt Colors: White, Black or Bronze

Hinged Splitfit Attachment

Backlight Shield

347 VAC, 480 VAC

ORDERING INFORMATION

Sample Code: LUM100SSL60W0-LV20K-80T2

| Series | Wattage | Voltage | CCT | CRI ¹ | Distribution |
|-----------|---------|---------------------------|---------------|------------------|-------------------------|
| LUM100SSL | 20W | LV: 120 - 277V | 2200K - 3000K | 70: RA70 | T2: Type I |
| | 30W | HV: 347-480V ² | | 80: RA80 | T3: Type III |
| | 40W | | | 90: RA90 | T5: Type V ³ |
| | 60W | | | 97: RA97 | |
| | 80W | | | | |

Note: 1- Not all CRI options are available in all colour temperatures. Ask manufacturer for details.

2- High voltage available for 60W and 80W

3- Type 5 in progress

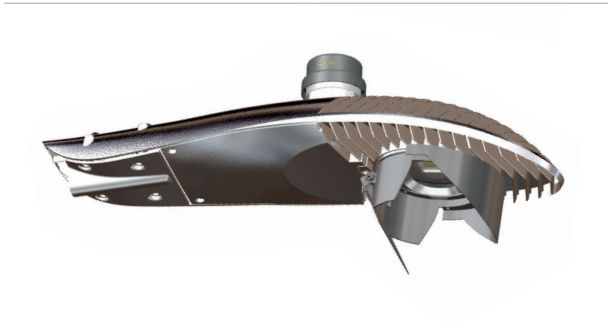
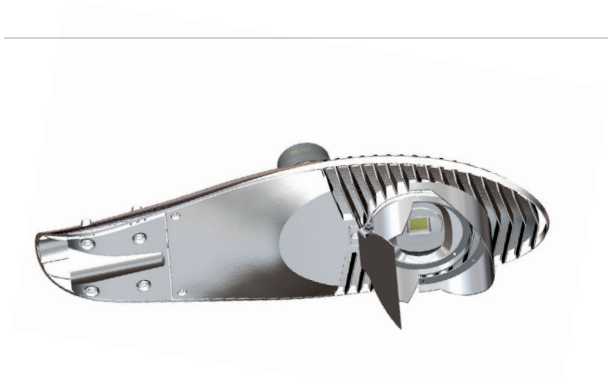
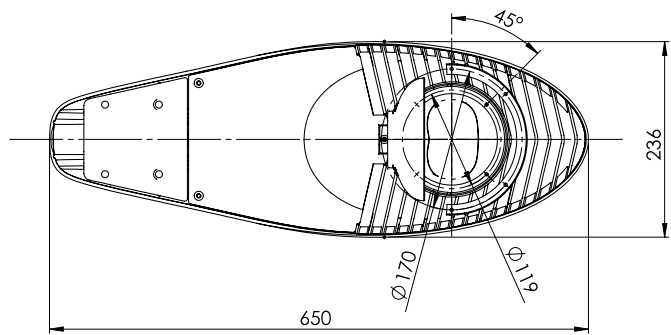
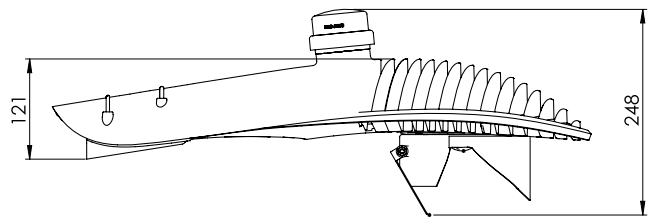
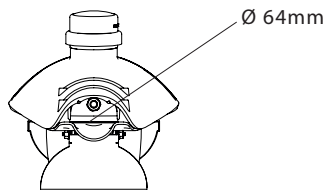
Disclaimer: this is a preliminary data-sheet, all values subject to change upon final certification.

PENDING CERTIFICATIONS

This luminaire was designed to meet DLC certification. Final certifications will be provided upon order confirmation.

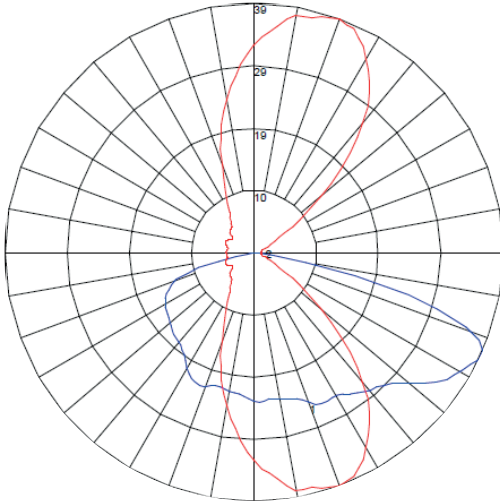


DIMENSIONS



LIGHT DISTRIBUTION

Type II



Type III

