

PRODUCT DESCRIPTION

# Cobrahead Small Chassis

LUM100SSL Series  
20W - 80W

Dark Sky SEA - TURTLE Friendly LED Area Lighting



FEATURES

**Optical**

Replaces 50W - 200W HPS or MH street and area lighting.  
CCT of 2200K-4000K feature the lowest possible amounts of harmful blue light emissions.  
Customised shielding available.

**Electrical**

120-277V Driver with 0.98 Power Factor at 120V and <20% THD.  
Prewired with ANSI C136.41 Standard 5-Pin Photocell Receptacle.  
0-10V Standard.

**Construction**

1EPA<0.1m²

APPLICATIONS

- Municipalities
- Roadways
- National Parks
- Dark-sky Reserves
- Sea turtle nestling beaches
- Other eco-sensitive areas

OPTIONS

- 10kVa & 20kVa Surge Protection Opt
- Colors: White, Black or Bronze
- Hinged Splitfit Attachment
- Backlight Shield
- 7-Pin Photocell Receptacle Available

ORDERING INFORMATION

Sample Code: LUM100SSL60W0-LV22K-65T2-SH

Series	Wattage	Voltage	CCT	CRI	Distribution	Cutoff Shield	Dimming
LUM100SSL	20W	LV: 120 - 277V	22K: 2200K	65: Ra65	T2: Type II T3: Type III	(Blank): None SH: Shielded	(Blank): 0-10V D: Dali
	30W						
	40W						
	60W						
	80W						

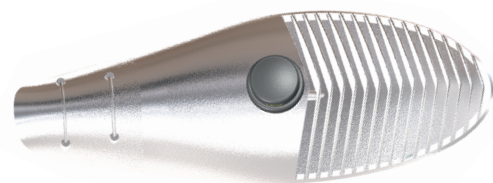
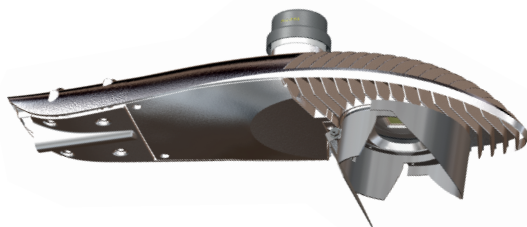
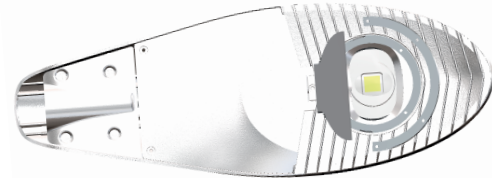
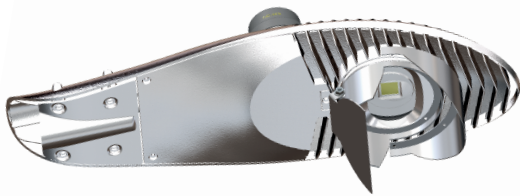
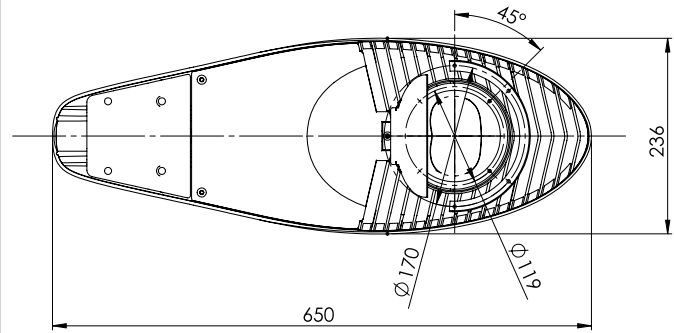
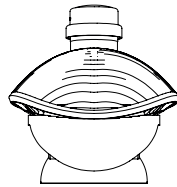
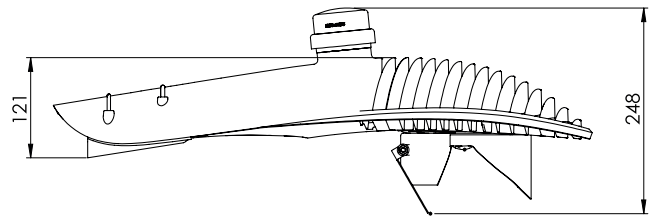
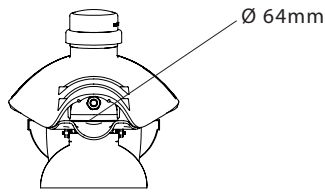
Note 1: Other CCT and CRI options available upon request; not all feature combinations are compatible. Please ask your representative for details.

Note 2: The DLC certification does not apply to all configurations, please contact your representative for details.

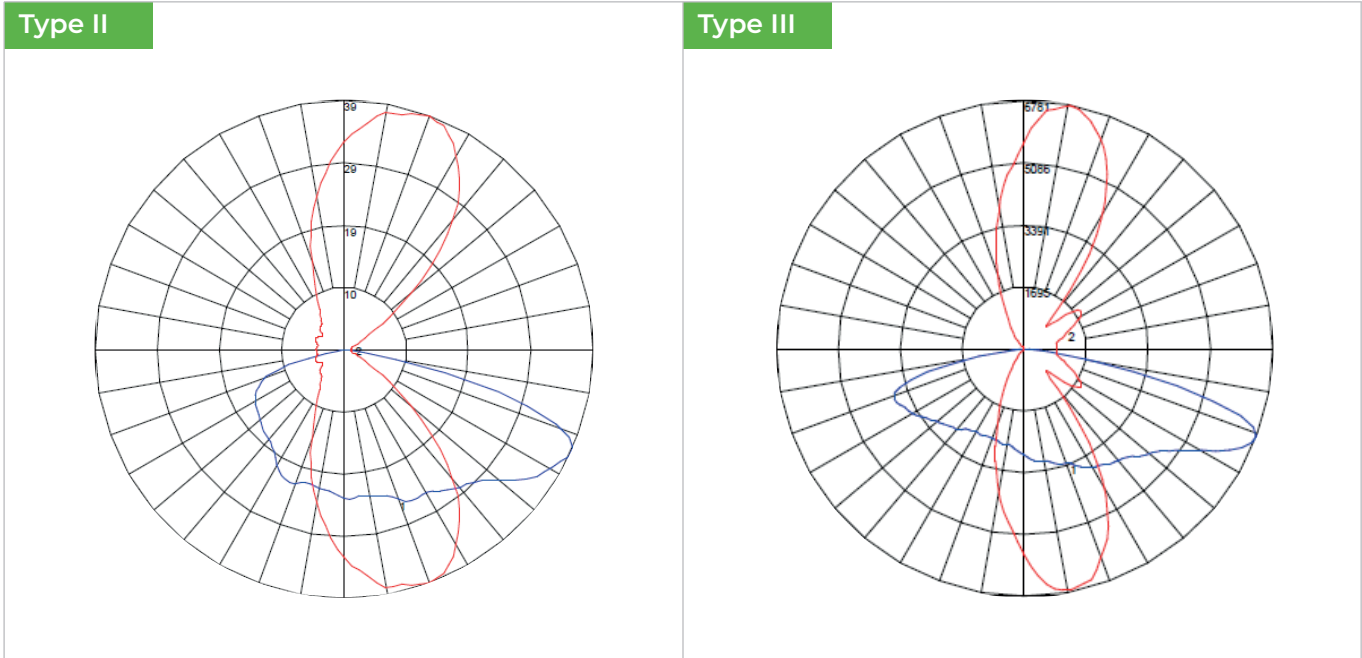
**SEA TURTLE PROTECTION**

Nesting turtles once had no trouble finding a quiet, dark beach on which to nest, but now they must compete with tourists, businesses and coastal residents for use of sandy beaches. Artificial lights discourage females from nesting, sometimes even ultimately causing them to hatch in the ocean. In addition, lighting near the shore cause hatchlings to become disoriented and wander inland, where they often die of dehydration or predation. Our solution with superb shielding and dimming features, as well as unique LED natural amber color temperature, which protect sea turtles and other endangered species.

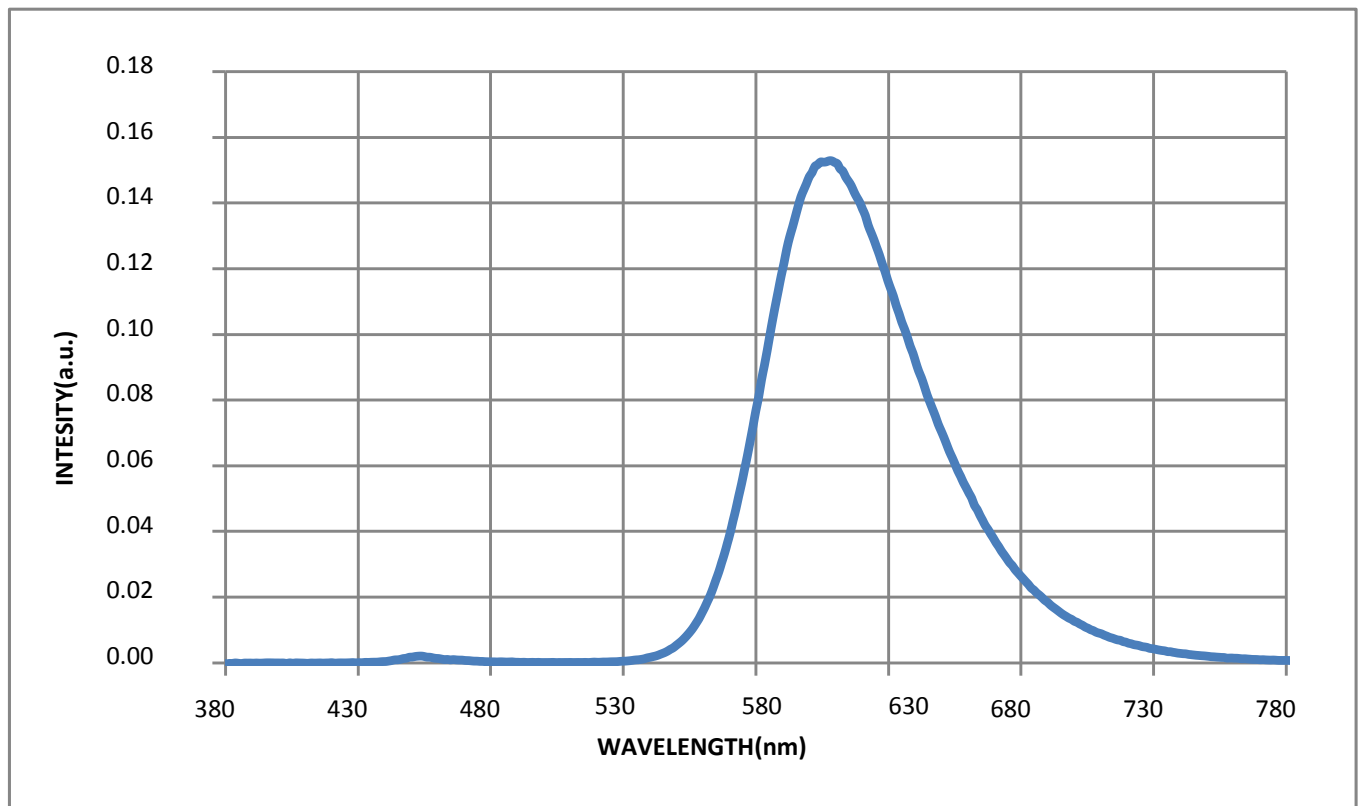
**DIMENSIONS**



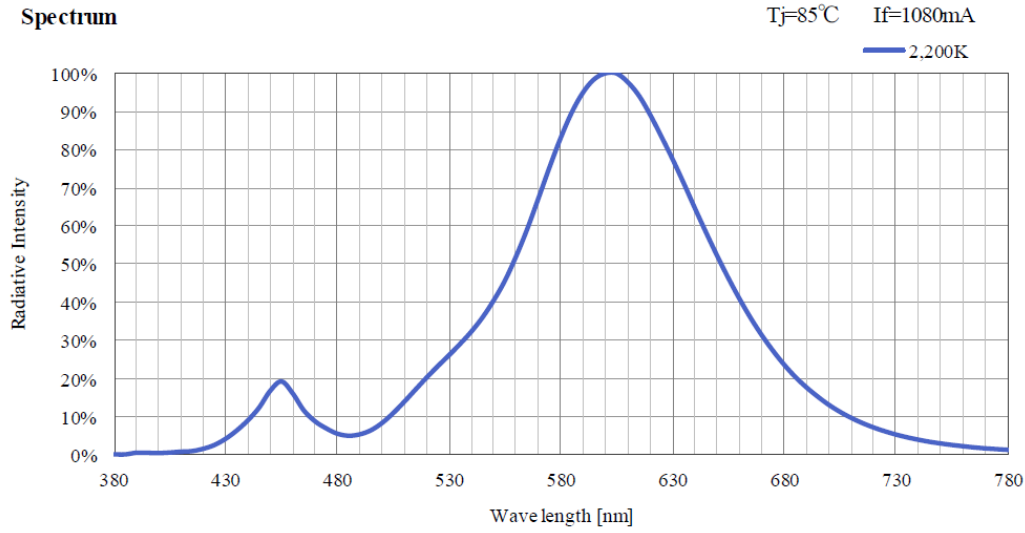
LIGHT DISTRIBUTION



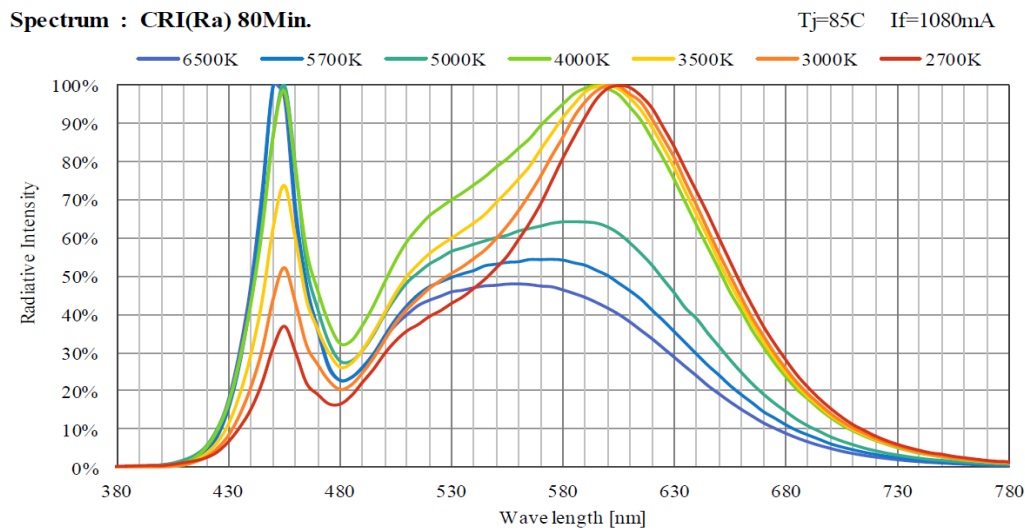
SEA TURTLE AMBER CHIP  
ELECTRONIC AND OPTICAL MEASUREMENT REPORT



**SPD COMPARISON - AMBER 2200K**



**SPD COMPARISON - CONVENTIONAL CCTs**



**SPD COMPARISON - TURTLE COB**

