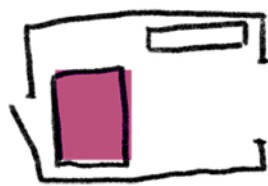


Finding the right size rug for a room can feel complicated -- but it doesn't have to be! With some simple guidelines, we have the answers to all of your rug size questions.

Entryway

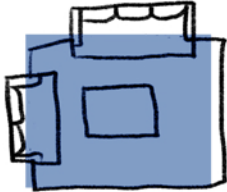


Make a great first impression with the perfectly sized entryway rug. Whether your foyer is small, narrow, or large, we have the perfect entryway rug size for you.

Standard Sizes

2x6 runner | 2x3 | 3x5 | 5x8

Living Room

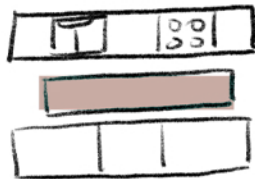


Rugs make your living room seating areas inviting and help create visual flow in the room. It's notoriously difficult to choose the best size of living room rug, but we've got you covered.

Standard Sizes

5x8 | 8x10 | 9x12 | 10x14

Kitchen

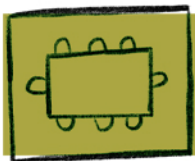


Kitchen rugs can save your floors and your joints while adding much-needed style. Picking the right rug(s) hinges on the layout of your kitchen. Be sure to look for a material that can handle cleaning and moisture.

Standard Sizes

2x6 runner | 2x3 | 3x5 | 5x8

Dining Room

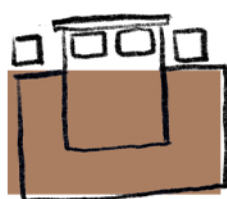


A well-chosen rug can bring color, style, texture and definition to your dining room. No matter the size of your table, make sure your rug extends atleast 24 inches on all sides to make sure your chairs have enough room to scoot out.

Standard Sizes

6x6 round or square | 8x10 | 9x12

Bedroom

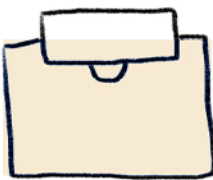


Give your feet a place to land every morning with a cozy bedroom rug. From twin beds in the kiddos room to a king in the master suite, we have rug sizing tips for any bedroom layout.

Standard Sizes

5x8 (twin) | 8x10 (queen) | 9x12 (king)

Office

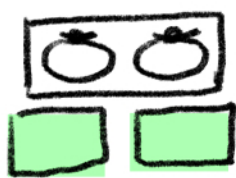


Get the job done in style with office rugs. Whether you have a small space for a desk or a whole room dedicated to your workspace, we have the office rug for your needs.

Standard Sizes

5x8 | 6x9 | 8x10

Bathroom

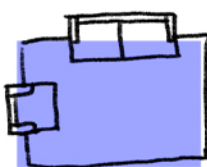


Create a spa-like space with a soft and luxurious bathroom rug. Depending on your room size and layout, the bathroom has a plethora of rugs to choose from.

Standard Sizes

2x6 runner | 2x3 | 3x5 | 5x8

Outdoor



Bring the indoors out with a colorful and soft outdoor rug. From keeping dirt and debris from going inside with a small mat to providing color and softness underfoot under a large dining room table,

Standard Sizes

5x8 | 8x10 | 9x12