

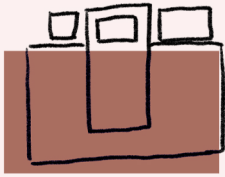
# Bedroom

## TWIN



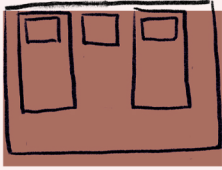
On a budget with two twin beds? Framing them with two runners is more budget-friendly than using one larger rug. This works great if the beds are against a wall.

Sizes  
3x5 | 2x9 Runner



Get a classy look by placing a 5x8 or 6x9 rug under the bottom two-thirds of a twin bed. This placement leaves the nightstands off but has plenty of room for your feet to land in the morning.

Sizes  
5x8 | 6x9

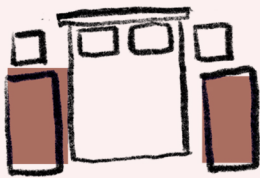


Bring it all together by placing two twin beds on a sizeable 8x10 rug with a nightstand in the middle. Or get some extra padding along the sides with a 9x12 rug.

Sizes  
8x10

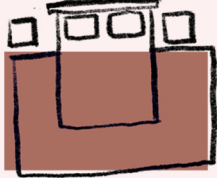
## Queen

Need more information?  
[Read our Queen Bed Rug Size Guide](#)



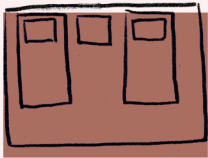
Limited space? Tight budget? Keep your bedroom floors warm without breaking the bank by framing a queen bed with two runners.

Sizes  
2x6 Runner | 2x9 Runner



If you're going for a mix of value and coverage, position a rug roughly under the bottom 2/3 of the bed. You want a bit exposed on the bottom and enough room for your feet on the sides.

Sizes  
8x10

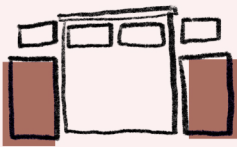


Ready to upgrade your bedroom? Place a 9x12 rug under the bed and nightstands. This positioning anchors the furniture layout and insulates your floors.

Sizes  
9x12

## King

Need more information?  
[Read our King Bed Rug Size Guide](#)



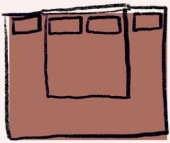
Runners are a cost-effective alternative for padding the sides of a standard or California king bed. Frame your king bed with 6' or 7' runners along the sides. For extra padding, try a 4x6 rug at the foot of the bed.

Sizes  
2x6 Runner | 2x9 Runner



A typical size rug for a king-sized bed is 9x12. Place the rug under the bed, leaving the nightstands and back legs off. This positioning pads the edges and bottom of a standard or California king bed.

Sizes  
9x12



If you have room to spare, make your bedroom more luxurious with a 10x14 rug. Place it under the bed, nightstands, and any furniture at the foot of the bed for full coverage and to make your room feel even more grand.

Sizes  
10x14