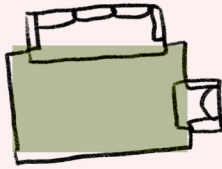


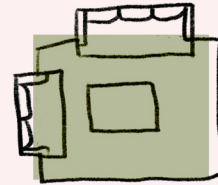
Living Room

Need more information? Read our [Living Room Rug Size Guide](#) and [Sectional Sofa Rug Size Guide](#).



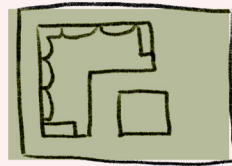
Have a small space? Make a seating area with a love seat and arm chair. We recommended all front legs stay on the rug so your furniture doesn't feel like it's floating.

Sizes
5x8 | 6x9



For larger spaces, try an 8x10 rug in the center of your seating arrangement and anchor the front legs of your seating area on the rug.

Sizes
8x10



Your living room is the heart of your home, so show it some love with a 9x12 rug. If you have more space, try a 10x14 or even 12x15 rug. A rug this big should be able to accommodate your furniture with all four legs on it.

Sizes
9x12 | 10x14