

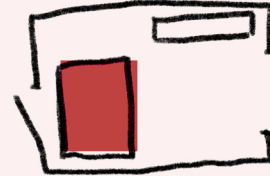
# Entryway

Need more information? Read Our Entryway Rug Size Guide.



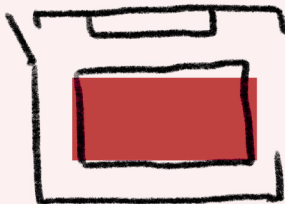
Long and narrow entrance halls work well with runners. Try a 2x6 or a 2x9 rug to protect the length of your entryway.

Sizes  
2x6 runner | 2x9 runner



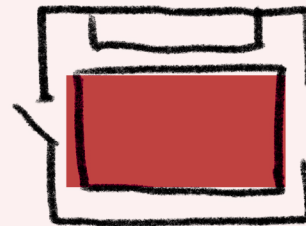
Entryway rugs don't need to be big if your place is small. A 2x3 or 3x5 rug is enough to catch the dirt, especially if your home has a shoes-off policy past the door.

Sizes  
5x8



Dress up a mid-sized entryway with a 4x6 rug. This size will provide more coverage, perfect for a space that features a coat closet, bench, and/or shoe rack.

Sizes  
4x6



Do you have a lot of room to cover? Larger foyers and entryways call for more sizeable rugs. Try a 5x8 or 6x9 rug to protect your floors and welcome your guests.

Sizes  
5x8 | 6x9