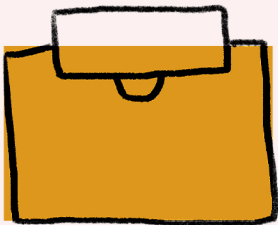


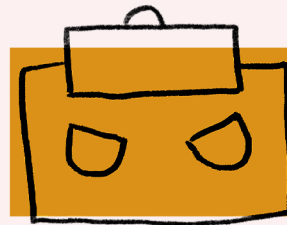
Office

Need more information? Read our Office Rug Size Guide.



Just have enough space for a desk? Opt for a small to medium sized rug so that your desk and chair sit on the rug with just enough room to scoot your chair out.

Sizes
4x6 | 5x8



For a medium or large office, use a rug to run parallel to your desk and just put the back legs on - allowing for 2 chairs to be on the rug, but your office chair to be directly on the floor.

Sizes
6x9 | 8x10