

Psalm 23 (I Am Not Alone)

(based on the recording by Joshua Sherman)

Words and Music by
Joshua Sherman, Steven Musso,
Laurel Taylor and The Emerging Sound

VERSE

♩ = 63

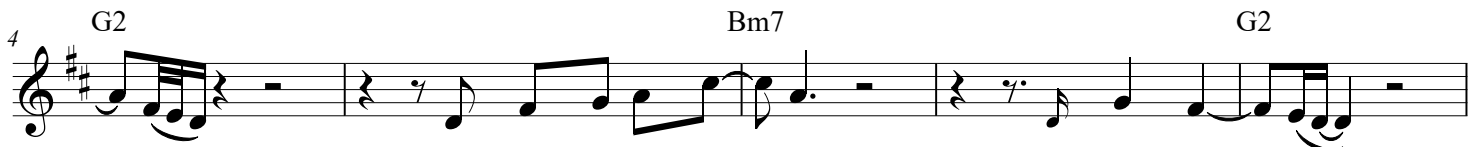


1. The Lord is my Shep - herd.

He goes be - fore

(2. He al - ways guides) me

through moun - tains and val -



me.

De - fend - er be - hind me.

I won't fear.

leys.

His joy is re - fresh - ing,

re - stores my soul.



I'm filled with a - noint - ing.

My cup's o - ver - flow - ing.

Mer - cy and good - ness

give me as - sur - ance

CHORUS



No wea - pon can harm me.
that I'll see His glo - ry

I won't fear.
face to face.

Hal - le - lu - jah,



I am not a - lone.

He's my Com - fort. Al - ways holds me close.

CCLI Song # 7111981

© 2018 Tent Peg Music | The Emerging Sound Publishing | Touched By A Fire Music
For use solely with the SongSelect® Terms of Use. All rights reserved. www.ccli.com

CCLI License # 42490

1 2, 4 3 **BRIDGE 1**

25 *D.S.* *Gmaj7*

2. He al - ways guides Your Spir - it lives with - in me.

29 *D2/F#* *Em9* *A/C#* *C/D* *D* 1, 2, 3

So, I will walk in Your peace. Your Spir - it lives with - in me. My vic - t'ry, my vic - 'try.

BRIDGE 2

32 *A/C#* *C/D* *D* *Gmaj7* *D2/F#*

My vic - t'ry, my vic - 'try. My vic - 'try, my vic - 'try. My vic - 'try, my vic - 'try.

CHORUS

35 *Em9* *A/C#* *C/D* *G#m7(b5)* *A* *Bm*

My vic - 'try, my vic - 'try. My vic - 'try, Hal - le - lu - jah, I am not a - lone.

39 *G* *A* *Bm* 1, 2 *G*

He's my Com - fort. Al - ways holds me close.

45 *G* 3

close.