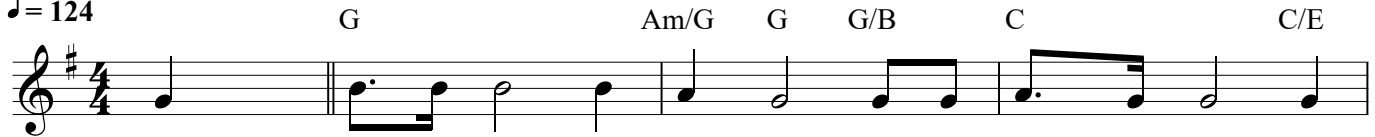


# Victory In Jesus

Words and Music by  
Eugene M. Bartlett

## VERSE

♩ = 124



1. I heard an old, old sto - ry, how a Sav - ior came from  
2. I heard a - bout His heal - ing, of His cleans - ing pow'r re -  
3. I heard a - bout a man - sion He has built for me in



glo - ry, how He gave His life on Cal - va - ry to save a wretch like me. I  
veal - ing, how He made the lame to walk a - gain and caused the blind to see. And  
glo - ry, and I heard a - bout the streets of gold be - yond the crys - tal sea; A -

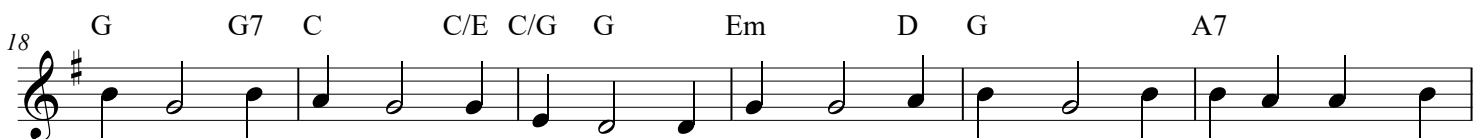


heard a - bout His groan - ing, of His pre - cious blood's a - ton - ing, then  
then I cried, "Dear Je - sus, come and heal my bro - ken spir - it," and  
bout the an - gels sing - ing, and the old re - demp - tion sto - ry; And

## CHORUS



I re - pent - ed of my sins and won the vic - to - ry. O vic - to - ry in  
some - how Je - sus came and brought to me the vic - to - ry.  
some sweet day I'll sing up there the song of vic - to - ry.



Je - sus, my Sav - ior for - ev - er! He sought me and bought me with His re - deem - ing

CCLI Song # 1259

© Words: 1939 Mrs. E.M. Bartlett. Renewed 1967 Albert E. Brumley And Sons | Music: 1939 Mrs. E.M. Bartlett. Renewed 1967 Albert E. Brumley And Sons  
For use solely with the SongSelect® Terms of Use. All rights reserved. www.ccli.com

CCLI License # 42490

24

D G C/G G G7 C C/E C/G G

blood. He loved me ere I knew Him, and all my love is due Him. He

Detailed description: This block contains the first musical staff, measures 24 through 28. The key signature has one sharp (F#). The melody consists of quarter and eighth notes. Chords are indicated above the staff: D (measure 24), G (measure 25), C/G (measure 26), G (measure 27), G7 (measure 28), C (measure 29), C/E (measure 30), C/G (measure 31), and G (measure 32). The lyrics are: "blood. He loved me ere I knew Him, and all my love is due Him. He".

29

Am/C G/D D7 G

plunged me to vic - to - ry be - neath the cleans - ing flood.

Detailed description: This block contains the second musical staff, measures 29 through 32. The key signature has one sharp (F#). The melody continues with quarter and eighth notes. Chords are indicated above the staff: Am/C (measure 29), G/D (measure 30), D7 (measure 31), and G (measure 32). The lyrics are: "plunged me to vic - to - ry be - neath the cleans - ing flood." The staff ends with a double bar line.