

You Never Let Go

Words and Music by
Matt Redman and Beth Redman

VERSE

♩ = 76

A



1. E - ven though I walk through the val - ley of the shad - ow of death, Your
(2.) light that is com - ing for the heart that holds on, a

D2/F#



per - fect love is cast - ing out fear, and e - ven when I'm
glo - rious light be - yond all com - pare, and there will be an

A

D2/F#



caught in the mid - dle of the storms of this life, I won't turn back, I know You are near.
end to these trou - bles, but un - til that day comes, we'll live to know You here on the earth.

PRE-CHORUS

F#m7

E

A

F#m7

E

A



And I will fear no e - vil, for my God is with me, and if my God is

F#m7

E

A

E

D2



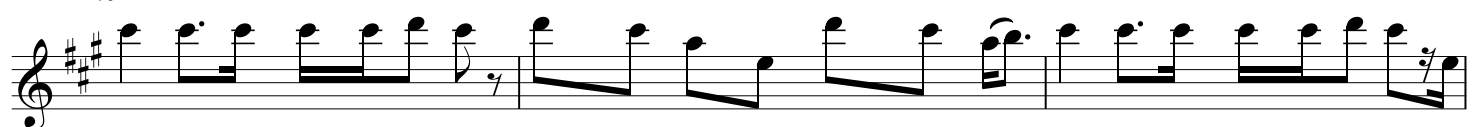
with me, whom then shall I fear? Whom then shall I fear?

CHORUS

A

%

F#m7



Oh no, You nev - er let go, through the calm and through the storm. Oh no, You nev - er let go in

CCLI Song # 4674166

© 2005 Thankyou Music Ltd

For use solely with the SongSelect® Terms of Use. All rights reserved. www.ccli.com

CCLI License # 42490

Esus D2
Last time to Coda

20 ev - 'ry high and ev - 'ry low. Oh no, You nev - er let go, Lord, You nev - er let go of me.

(1) (2)
A Esus D2 D2

23 2. And I can see a Lord, You nev - er let go of me. You

A Esus D2 D.S. al Coda

26 keep on run - nin' and You nev - er let go. Sing - in'

D2 Coda

28 Lord, You nev - er let go of me.

BRIDGE

A Esus D2 A

29 Yes, I can see a light that is com - ing for the

F#m7

32 heart that holds on, and there will be an end to these trou - bles, but un - til that day comes,

Esus D2 A

35 still I will praise You, still I will praise You. Yes, I can see a

CHORUS

39 **2**
 Esus D2 A

 Oh no, You nev - er let go, through the calm and through the storm.

42 F#m7 Esus

 Oh no, You nev - er let go, in ev - 'ry high and ev - 'ry low. Oh no, You nev - er let go,

CHORUS

45 D2 A Esus D2 A

 Lord, You nev - er let go of me. Oh no, You nev - er let go,

49 F#m7

 through the calm and through the storm. Oh no, You nev - er let go, in

51 Esus D2

 ev - 'ry high and ev - 'ry low. Oh no, You nev - er let go, Lord, You nev - er let go of me.

ENDING

A Esus D2 A

 Lord, You nev - er let go of me.