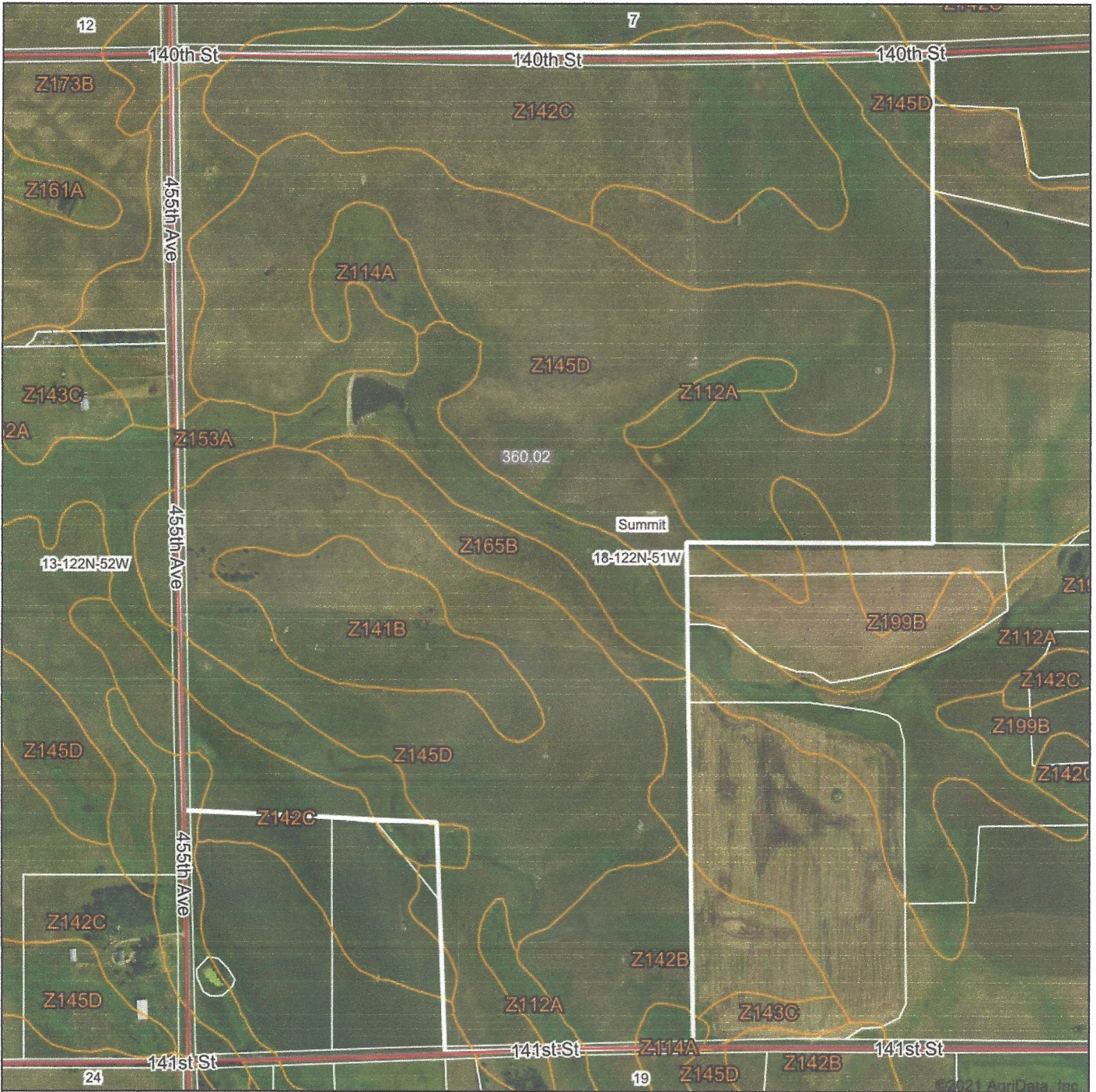
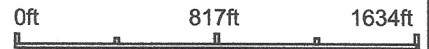


Aerial Map



Map Center: 45° 20' 53.13, -97° 5' 45.64



18-122N-51W
Roberts County
South Dakota

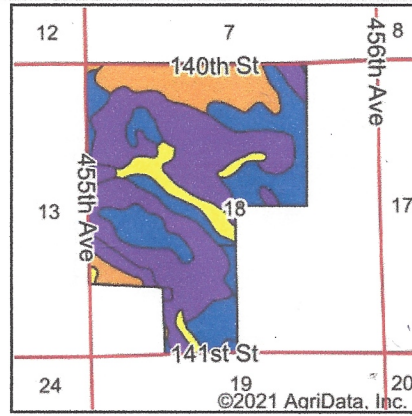
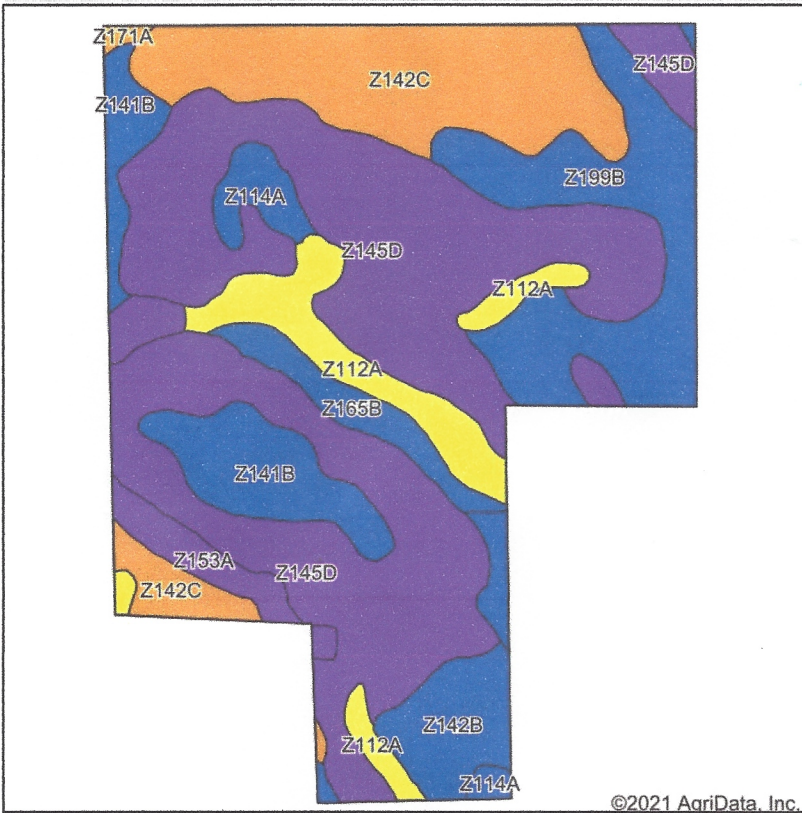


Maps Provided By:

CUSTOMIZED ONLINE MAPPING
© AgriData, Inc. 2021 www.AgriDataInc.com

Field borders provided by Farm Service Agency as of 5/21/2008.

Soils Map



State: **South Dakota**
 County: **Roberts**
 Location: **18-122N-51W**
 Township: **Summit**
 Acres: **360.02**
 Date: **10/11/2021**



Soils data provided by USDA and NRCS.

©2021 AgriData, Inc.

Area Symbol: SD109, Soil Area Version: 21

Code	Soil Description	Acres	Percent of field	Non-Irr Class Legend	Non-Irr Class *c	Productivity Index	*n NCCPI Soybeans
Z145D	Buse-Barnes loams, coteau, 2 to 15 percent slopes, very stony	156.90	43.6%		Vlls	9	38
Z142C	Barnes-Buse-Svea loams, coteau, 2 to 9 percent slopes	56.33	15.6%		llle	63	57
Z199B	Vienna-Barnes-Forestville loams, 1 to 6 percent slopes	48.81	13.6%		lle	81	60
Z141B	Barnes-Svea loams, coteau, 1 to 6 percent slopes	26.41	7.3%		lle	83	61
Z112A	Vallers-Hamerly loams, coteau, 0 to 2 percent slopes	26.15	7.3%		IVw	51	49
Z142B	Barnes-Buse-Svea loams, coteau, 1 to 6 percent slopes	14.47	4.0%		lle	77	57
Z153A	Lamoure-Rauville silty clay loams, channeled, 0 to 2 percent slopes, frequently flooded	12.02	3.3%		Vlw	13	18
Z165B	Darnen loam, coteau, 2 to 6 percent slopes	10.02	2.8%		lle	85	69
Z114A	Hamerly-Tonka complex, coteau, 0 to 2 percent slopes	8.00	2.2%		lls	66	54
Z171A	Renshaw-Fordville loams, coteau, 0 to 2 percent slopes	0.91	0.3%		llls	47	37
Weighted Average					4.62	42	*n 47.8

*n: The aggregation method is "Weighted Average using all components"

*c: Using Capabilities Class Dominant Condition Aggregation Method

Soils data provided by USDA and NRCS.