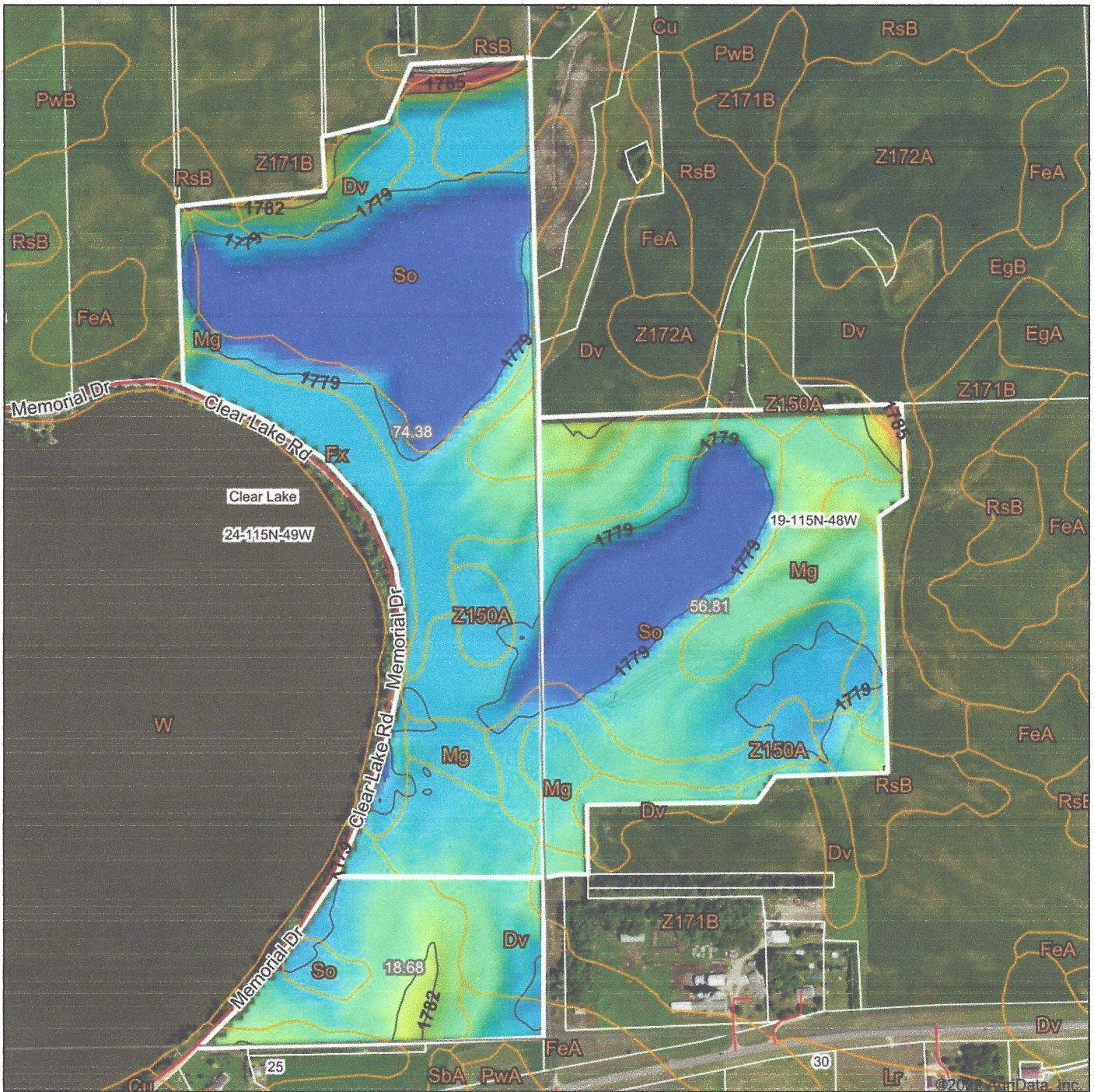


Topography Hillshade



Source: USGS 10 meter dem
 Interval(ft): 3
 Min: 1,776.3
 Max: 1,789.5
 Range: 13.2
 Average: 1,779.3
 Standard Deviation: 1.64 ft



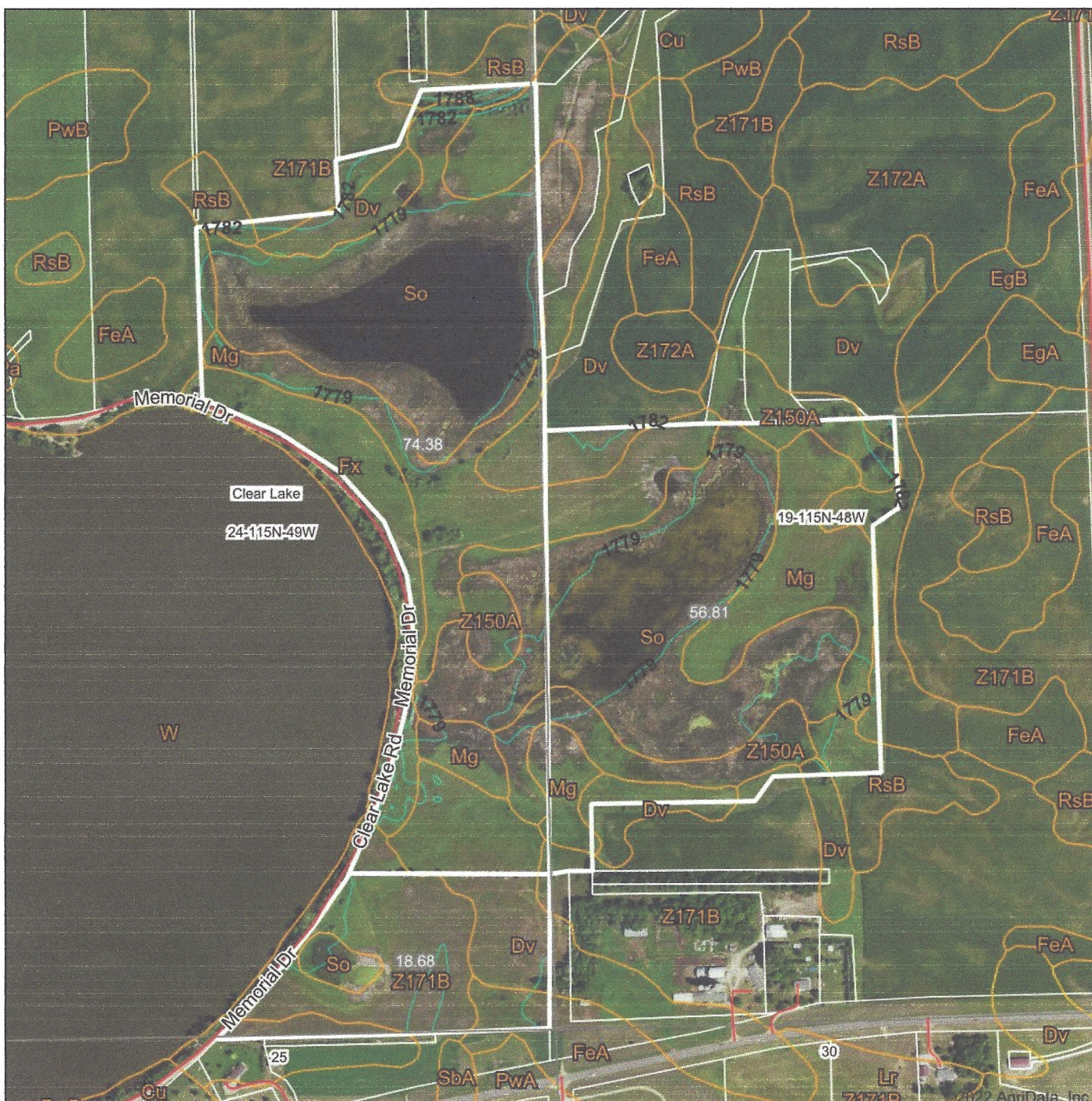
24-115N-49W
Deuel County
South Dakota

map center: 44° 45' 10.86, -96° 38' 41.19



© AgriData, Inc. 2021 www.AgriDataInc.com
 Field borders provided by Farm Service Agency as of 5/21/2008.

Topography Contours



Source: USGS 10 meter dem
 Interval(ft): 3.0
 Min: 1,776.3
 Max: 1,789.5
 Range: 13.2
 Average: 1,779.3
 Standard Deviation: 1.64 ft



24-115N-49W
 Deuel County
 South Dakota

Map Center: 44° 45' 10.86, -96° 38' 41.19

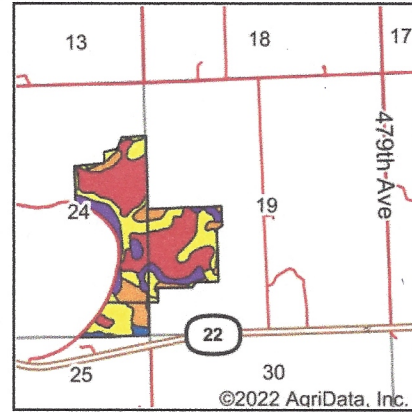
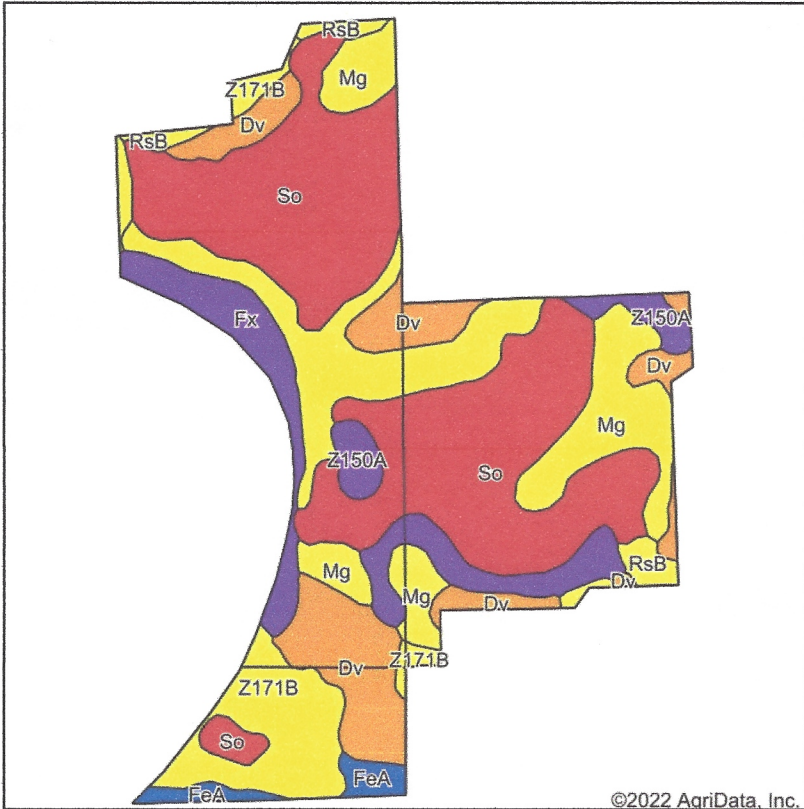
Maps Provided By:



© AgriData, Inc. 2021 www.AgriDataInc.com

Field borders provided by Farm Service Agency as of 5/21/2008.

Soils Map



State: **South Dakota**
 County: **Deuel**
 Location: **24-115N-49W**
 Township: **Clear Lake**
 Acres: **149.87**
 Date: **4/22/2022**

Maps Provided By:


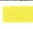






 CUSTOMIZED ONLINE MAPPING
 © AgriData, Inc. 2021 www.AgriDataInc.com



Soils data provided by USDA and NRCS.

©2022 AgriData, Inc.

Area Symbol: SD039, Soil Area Version: 24

Code	Soil Description	Acres	Percent of field	Non-Irr Class Legend	Non-Irr Class *c	Productivity Index	Alfalfa hay Tons	Corn Bu	Soybeans Bu	Spring wheat Bu	Winter wheat Bu	*n NCCPI Soybeans
So	Southam silty clay loam, 0 to 1 percent slopes	59.88	40.0%		VIIIw	10						9
Mg	Marysland loam	32.88	21.9%		IVw	46	0.4	47	15	13	8	28
Dv	Divide loam	19.42	13.0%		IIIIs	55	2.4	69	22	28	30	32
Z171B	Renshaw-Fordville loams, coteau, 2 to 6 percent slopes	14.39	9.6%		IVs	43						36
Z150A	Rauville silty clay loam, coteau, 0 to 1 percent slopes, frequently flooded	10.34	6.9%		Vw	23						9
Fx	Fossum sandy loam	7.72	5.2%		Vw	29	0.1	46	17	9	3	12
FeA	Fordville loam, coteau, 0 to 2 percent slopes	2.70	1.8%		IIs	59						49
RsB	Renshaw-Sioux complex, coteau, 2 to 6 percent slopes	2.54	1.7%		IVs	34						30
Weighted Average					5.55	30.1	0.4	21.6	7	6.9	5.8	*n 20

*n: The aggregation method is "Weighted Average using all components"

*c: Using Capabilities Class Dominant Condition Aggregation Method

Soils data provided by USDA and NRCS.

Aerial Map



Map Center: 44° 45' 10.86, -96° 38' 41.19



24-115N-49W
Deuel County
South Dakota



Maps Provided By:



© AgriData, Inc. 2021 www.AgriDataInc.com

Field borders provided by Farm Service Agency as of 5/21/2008.